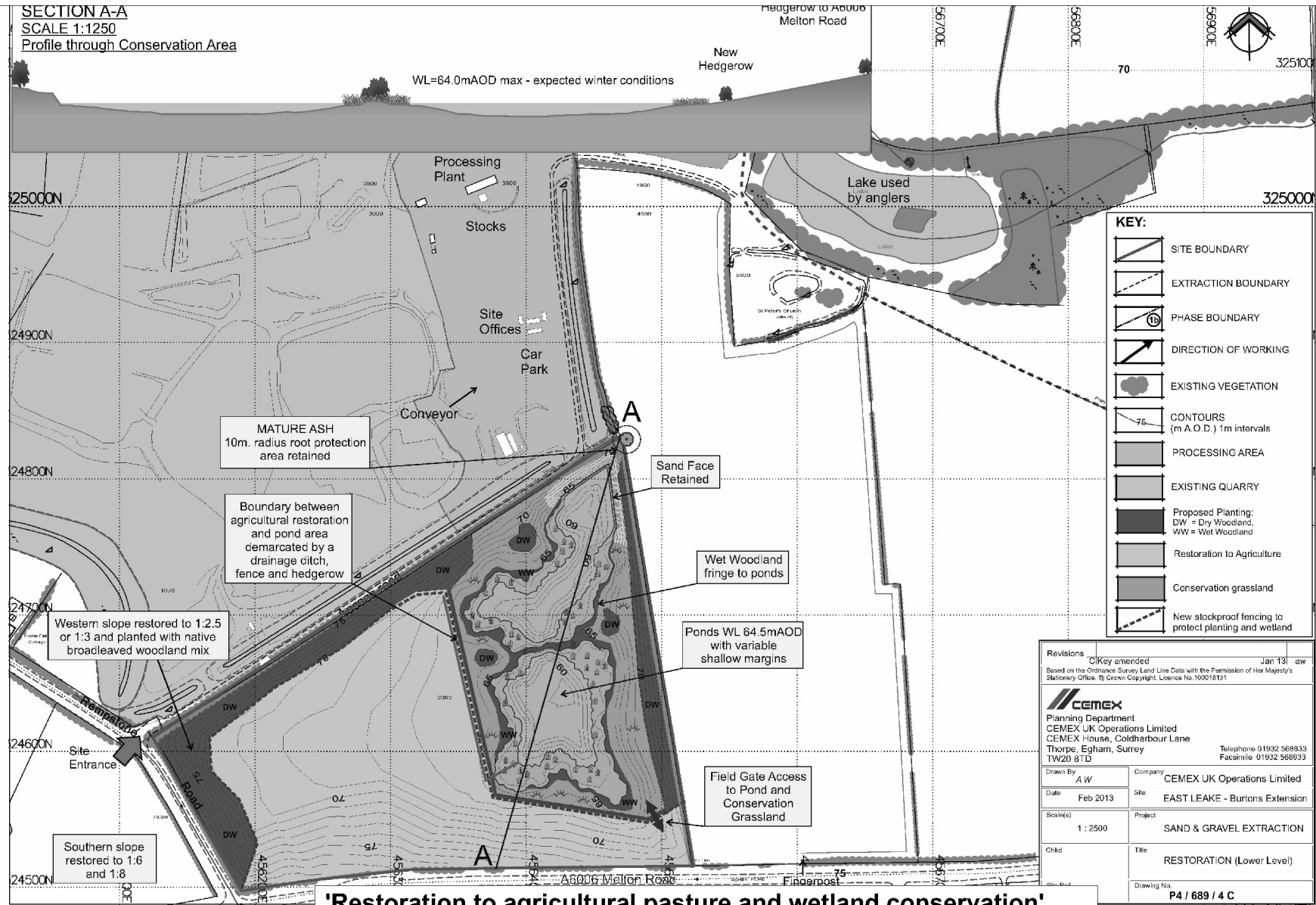


SECTION A-A
SCALE 1:1250
Profile through Conservation Area



'Restoration to agricultural pasture and wetland conservation'

Extension to existing quarry involving the extraction of sand and gravel with restoration of site to agriculture and wetland conservation.
Burton's Land, East Leake Quarry, Rempstone Road, East Leake.
Planning Application No. 8/11/00157/CMA

This map is reproduced from Ordnance Survey material with the permission of Ordnance Survey on behalf of the Controller of Her Majesty's Stationery Office © Crown copyright.
Unauthorised reproduction infringes Crown copyright and may lead to prosecution or civil proceedings. (1000019713) (2013)



Trent Bridge House, Fox Road
Nottinghamshire West Bridgford, Nottingham, NG2 6BJ
County Council Tel: 0115 982 3823



Not to Scale
Produced by: JW
Date: MARCH 2013

PLAN 3