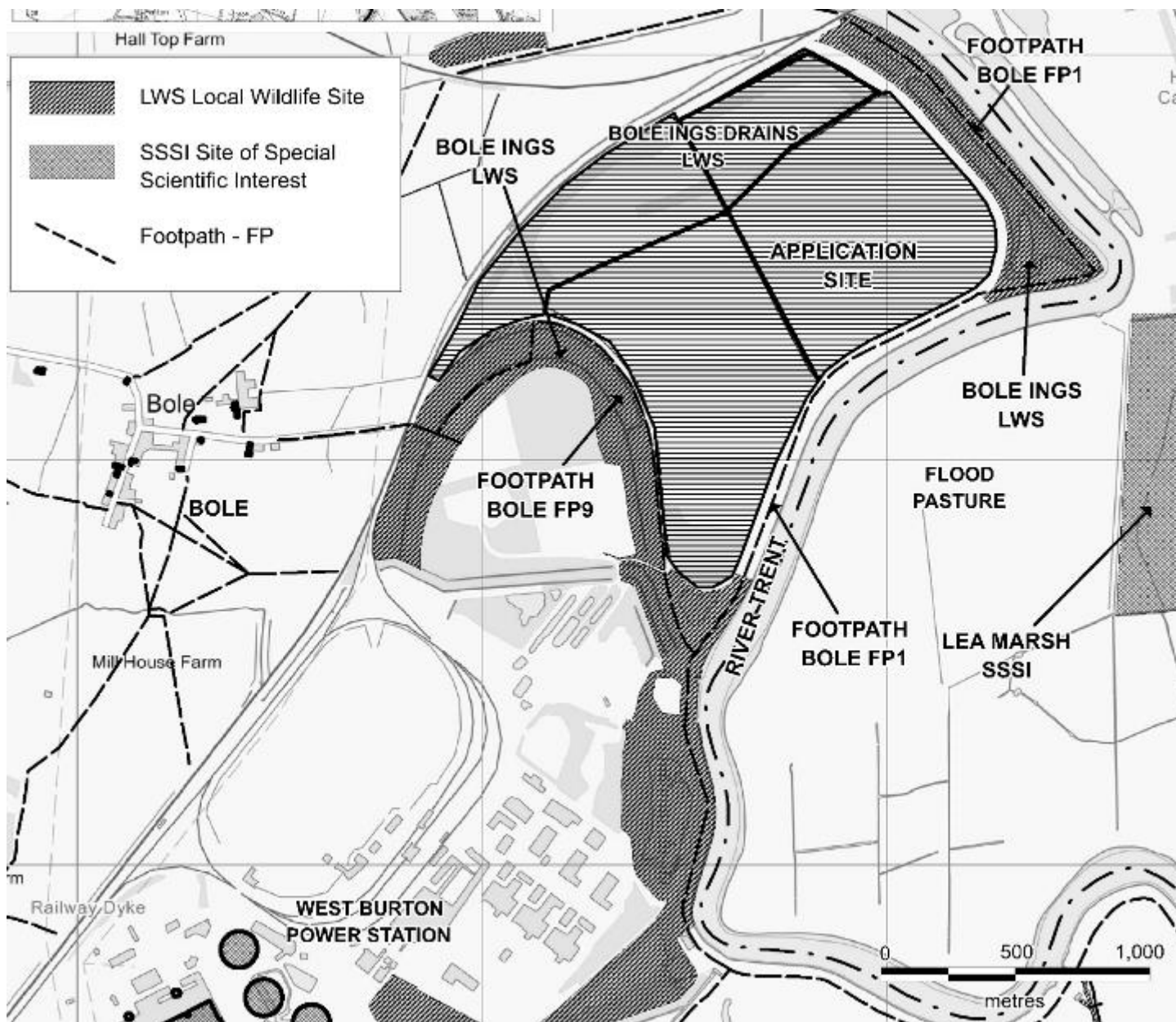


**Variations of conditions 11, 13, 37 and 53  
of planning permission 1/18/00234/CDM to  
enable full ash recovery from phase 1B/2  
and revisions to method statement,  
restoration, landscaping and aftercare**

West Burton Power Station and  
Bole Ings Ash Disposal Site

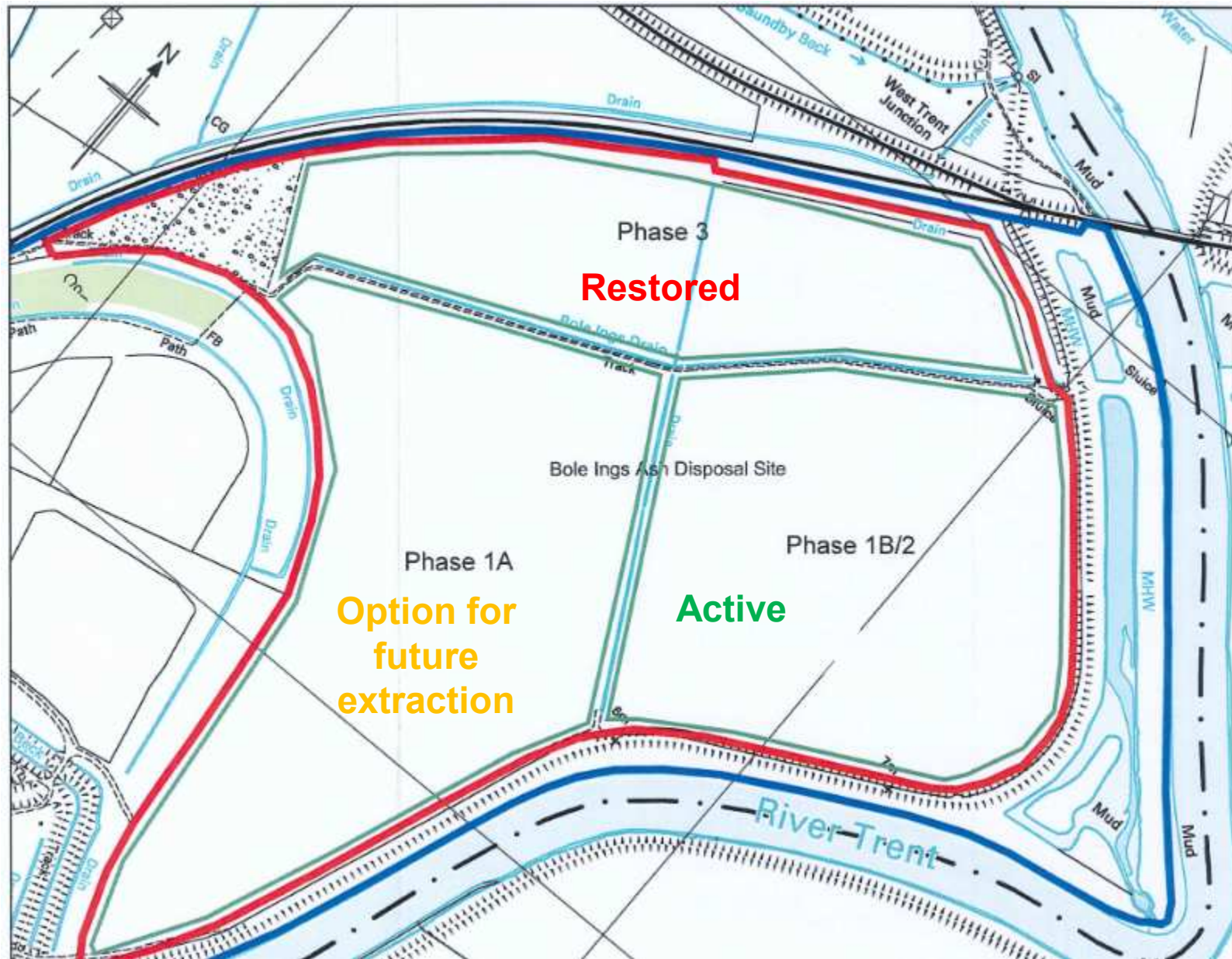


**Nottinghamshire  
County Council**



**Nottinghamshire  
County Council**

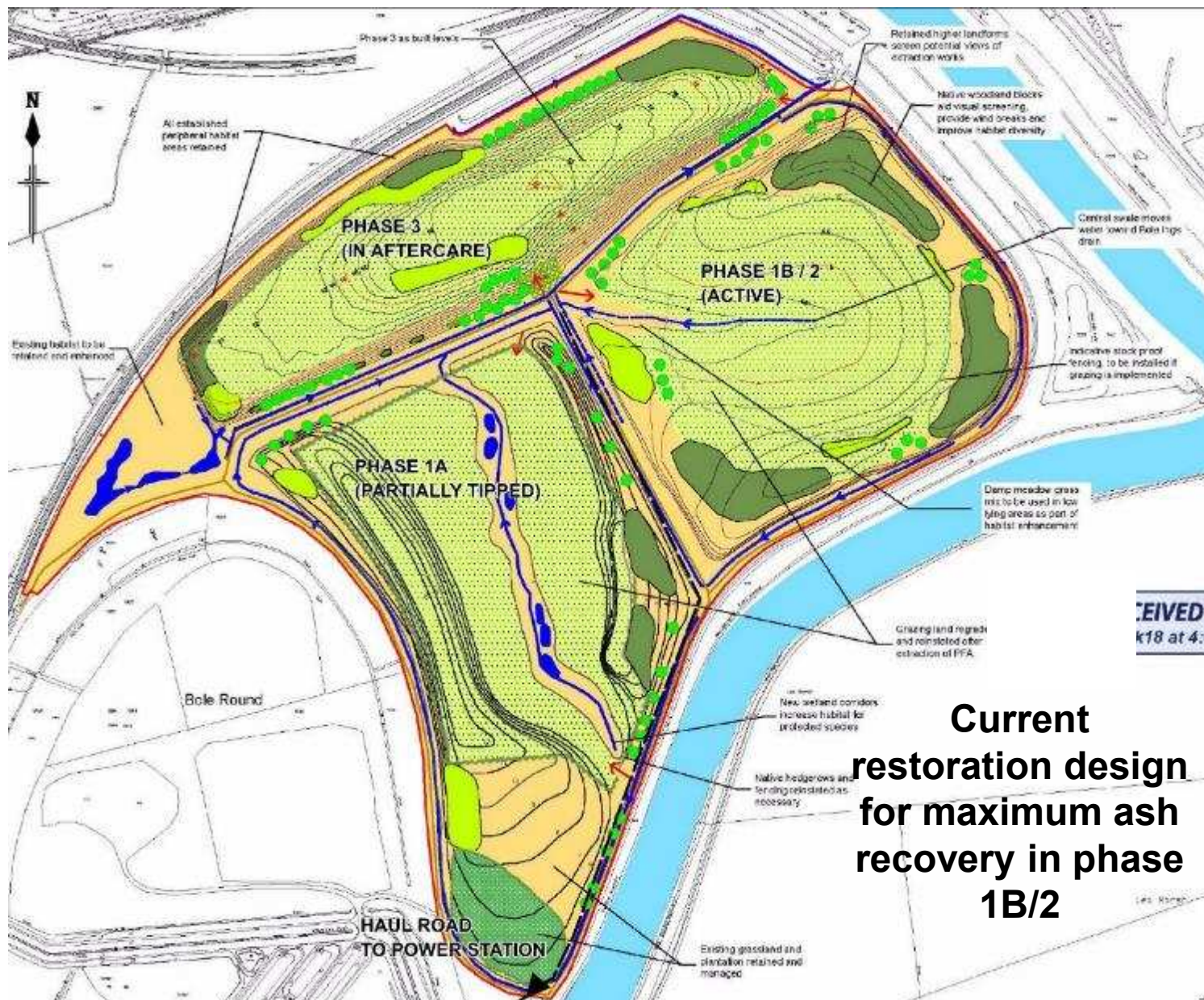
**West Burton/Bole Ings**



Nottinghamshire  
County Council

West Burton/Bole Ings





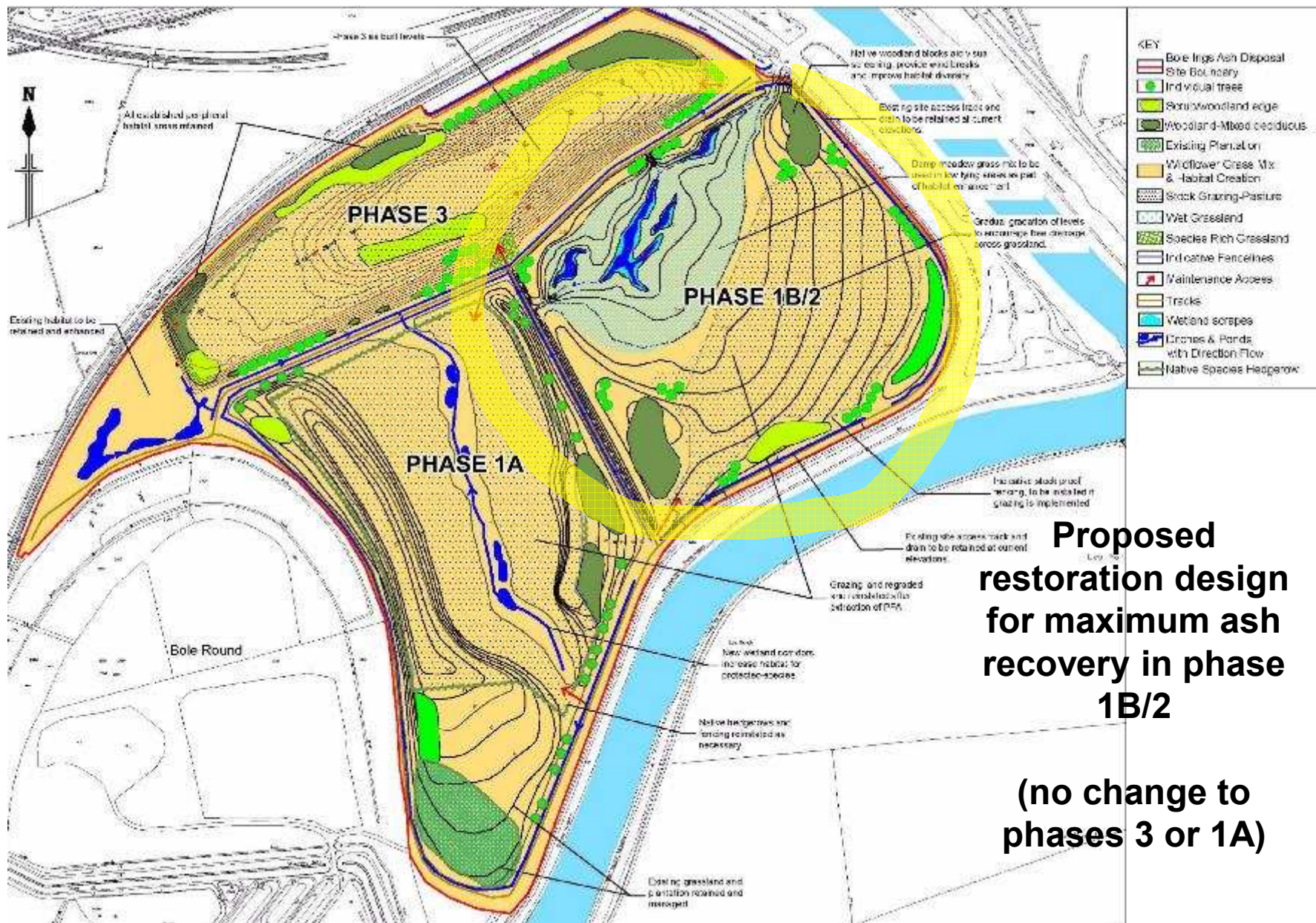
**Current  
restoration design  
for maximum ash  
recovery in phase  
1B/2**



**Nottinghamshire  
County Council**

**West Burton/Bole Ings**









**Nottinghamshire  
County Council**

**West Burton/Bole Ings**



**Nottinghamshire  
County Council**

**West Burton/Bole Ings**



**Active Phase 1B/2**



**Haul road**



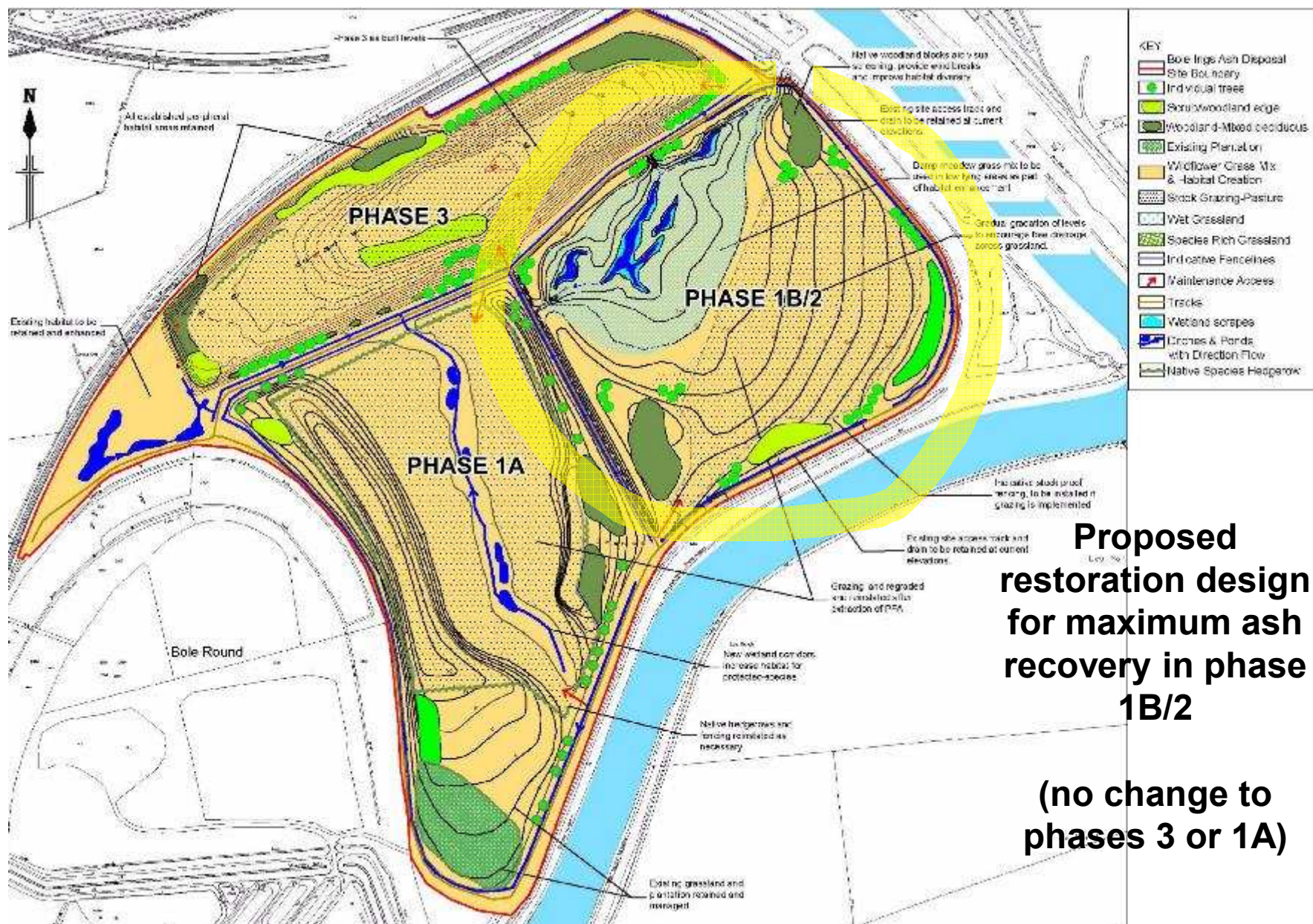
**Riverside  
footpath**



**Nottinghamshire  
County Council**

**West Burton/Bole Ings**





**Proposed  
restoration design  
for maximum ash  
recovery in phase  
1B/2**

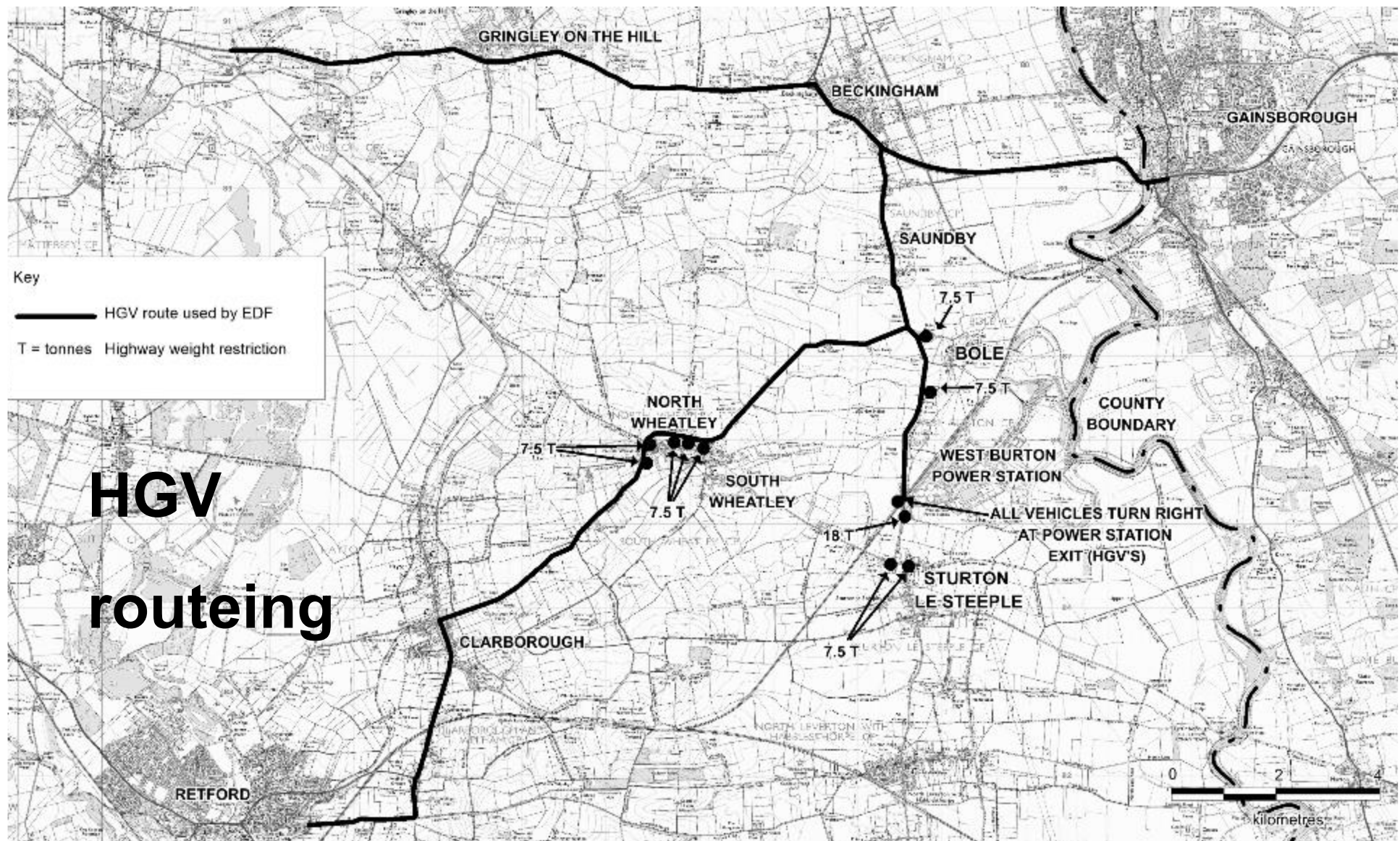
**(no change to  
phases 3 or 1A)**



**Nottinghamshire  
County Council**

**West Burton/Bole Ings**





Nottinghamshire  
County Council

West Burton/Bole Ings





**Nottinghamshire  
County Council**

**West Burton/Bole Ings**

# **Recommendation**

**Approve s73 planning  
permission subject to the  
conditions in Appendix 1**