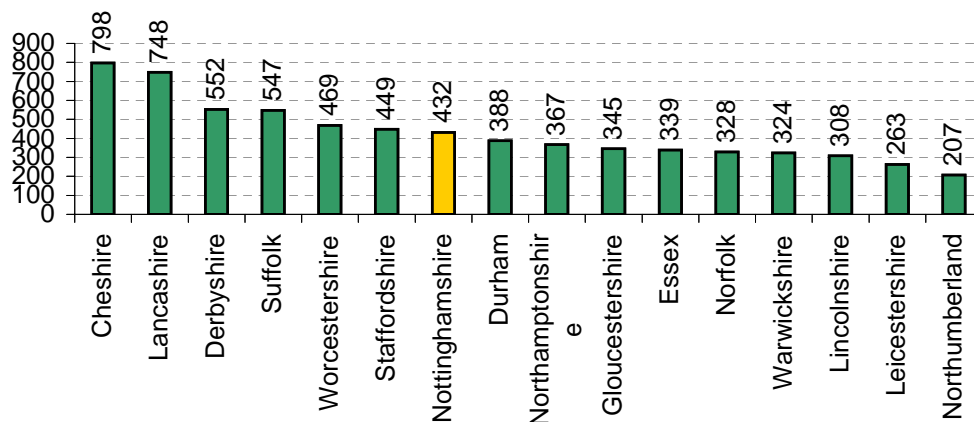
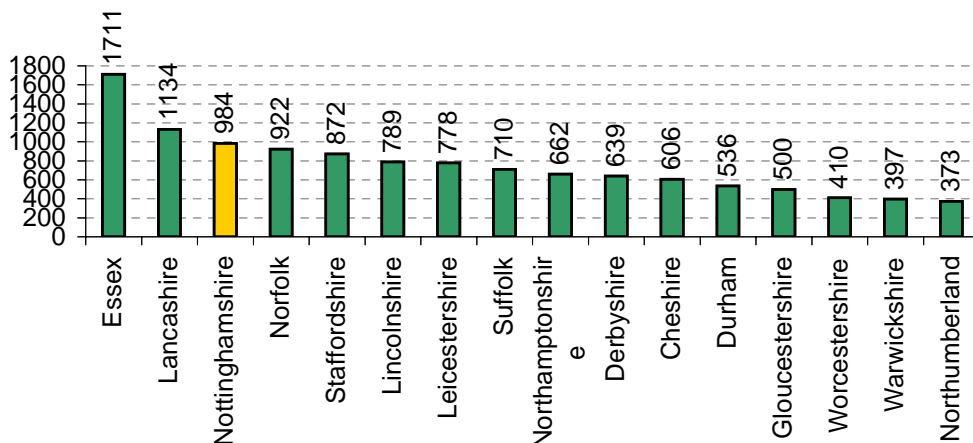


## Comparative data

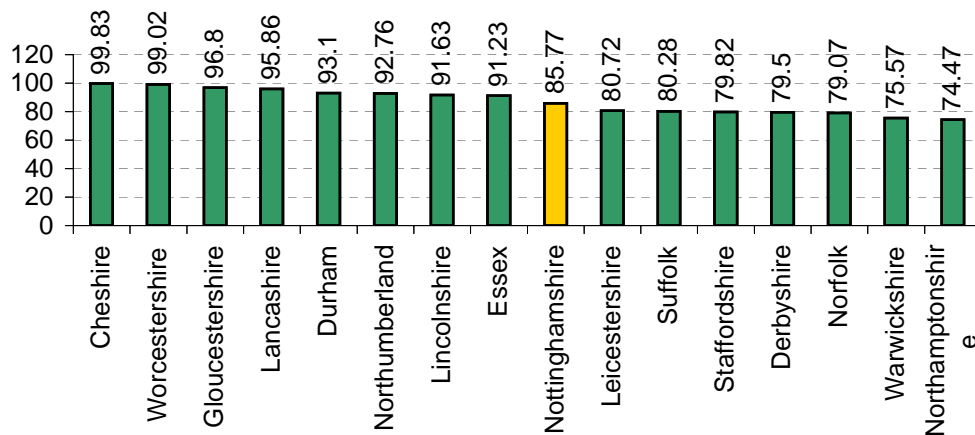
### Kigs - Permanent supported admissions to nursing care 2004/05



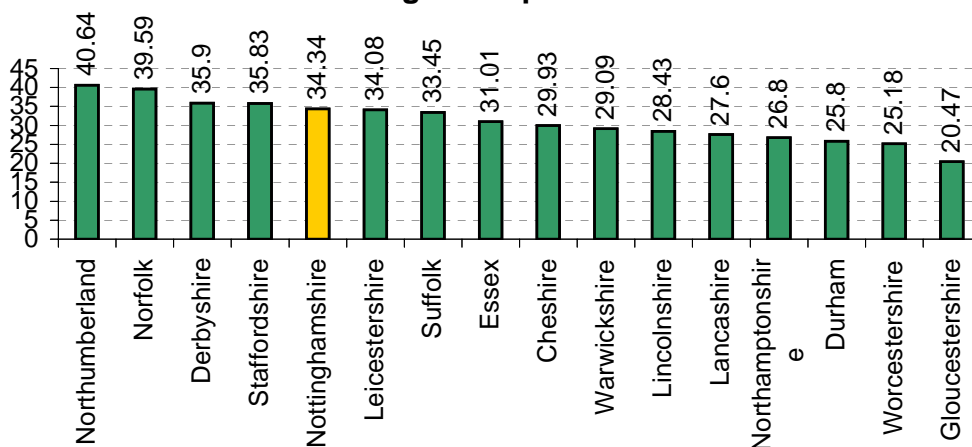
### Kigs - AA30 Permanent supported admissions to residential care 2004/05



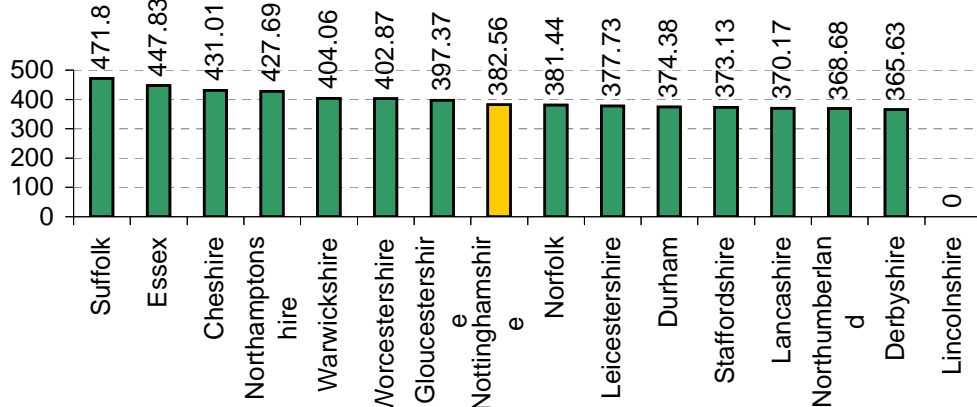
### Kigs - % of permanent supported admissions to residential care to independent homes 2004/05



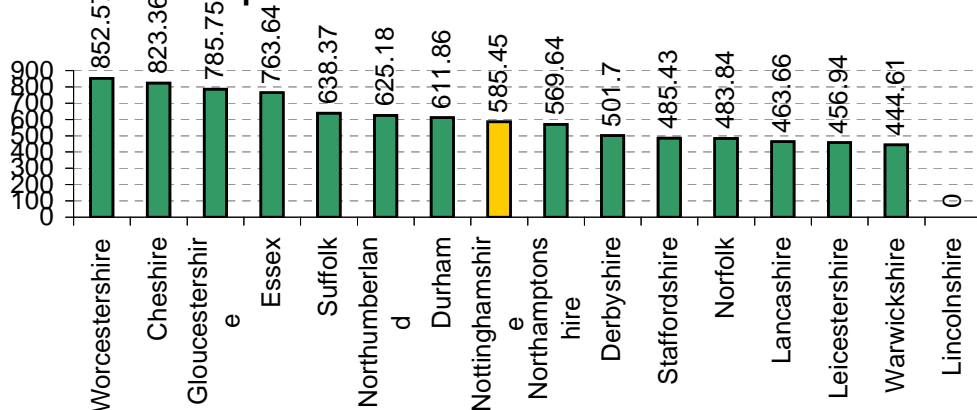
**Kigs - EX27N % of gross expenditure on residential care and nursing home placements 2004/05**



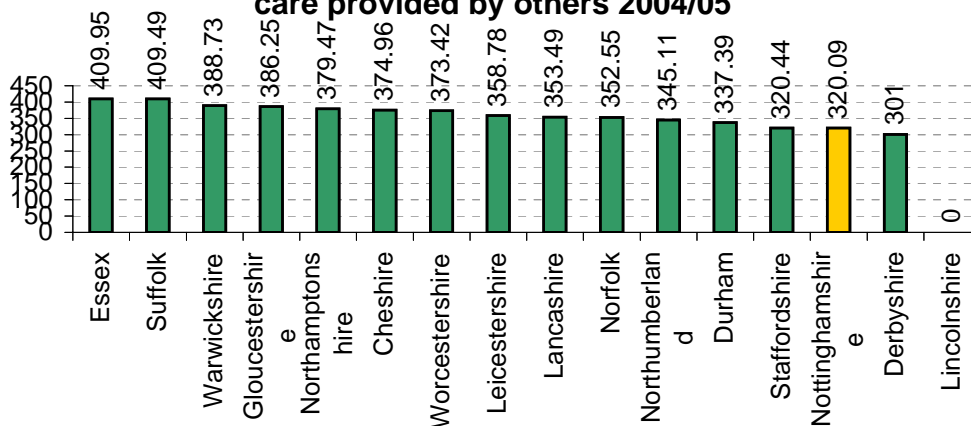
**Kigs - UC2\_04A Average gross weekly expenditure per person on supporting older people in residential care 2004/05**



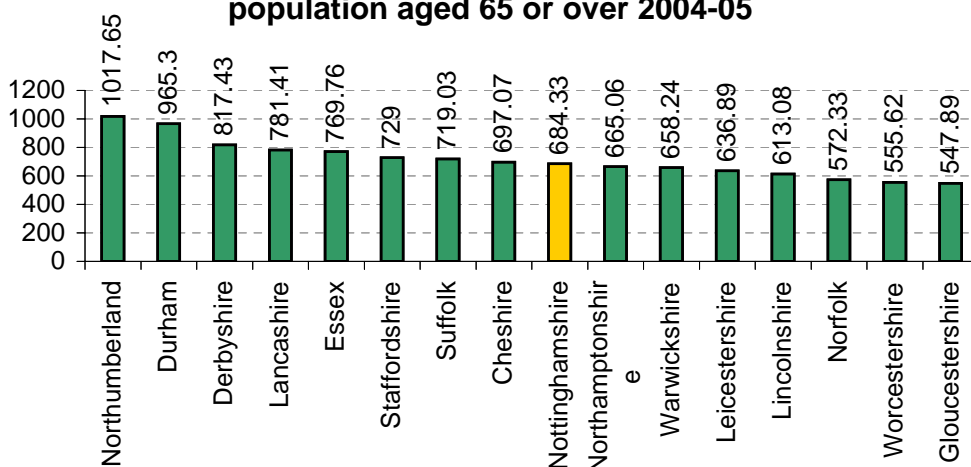
**Kigs - UC2\_05A Average gross weekly expenditure per person on supporting older people in own provision residential care 2004/05**



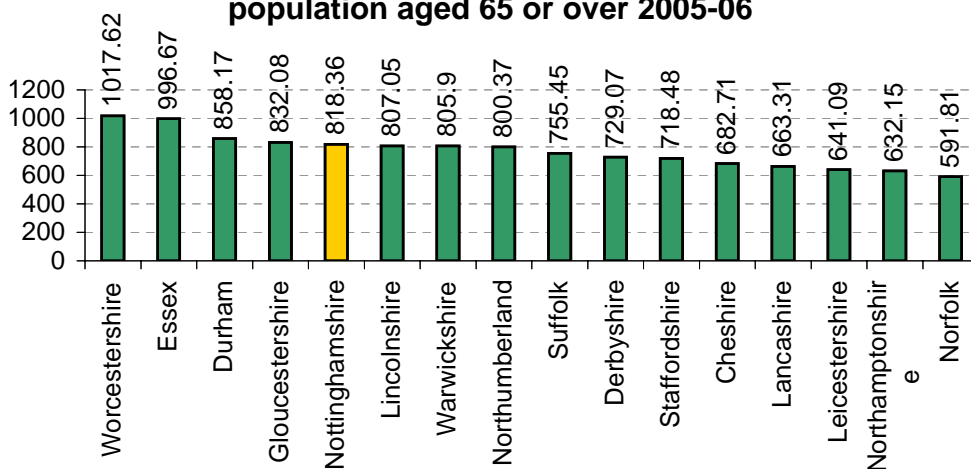
**Kigs - UC2\_06A Average gross weekly expenditure per person on supporting older people in residential care provided by others 2004/05**



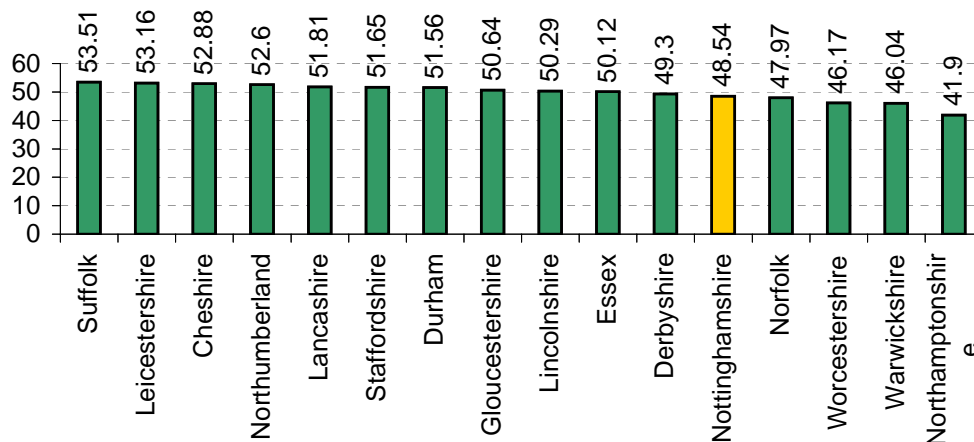
**Kigs - BU02 PSS budget allocated to older people per population aged 65 or over 2004-05**



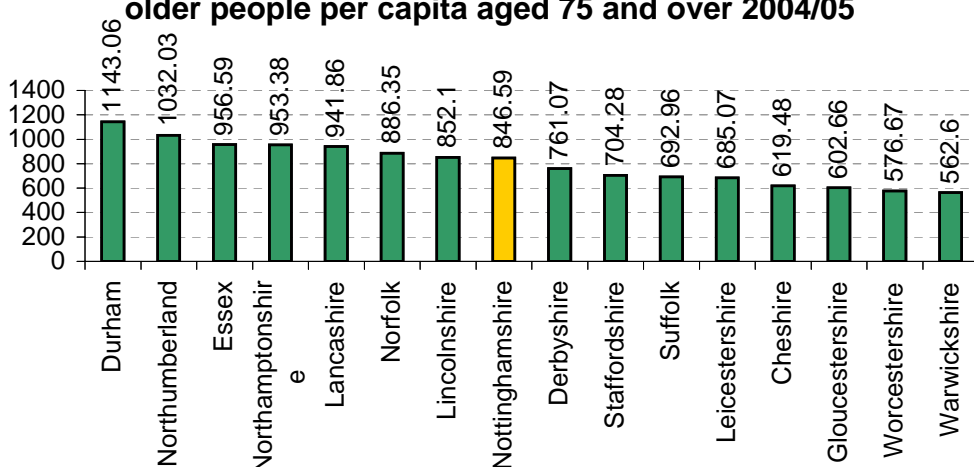
**Kigs - BU02 PSS budget allocated to older people per population aged 65 or over 2005-06**



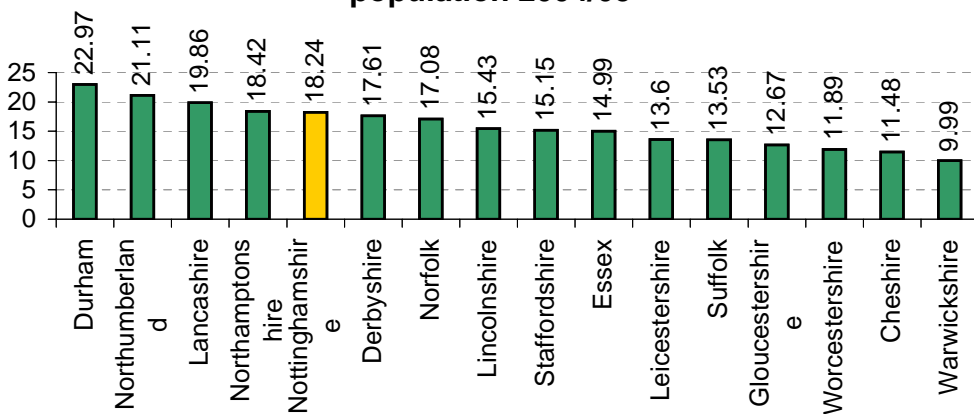
**Kigs - EX13 Percentage of expenditure on older people 2004/05**



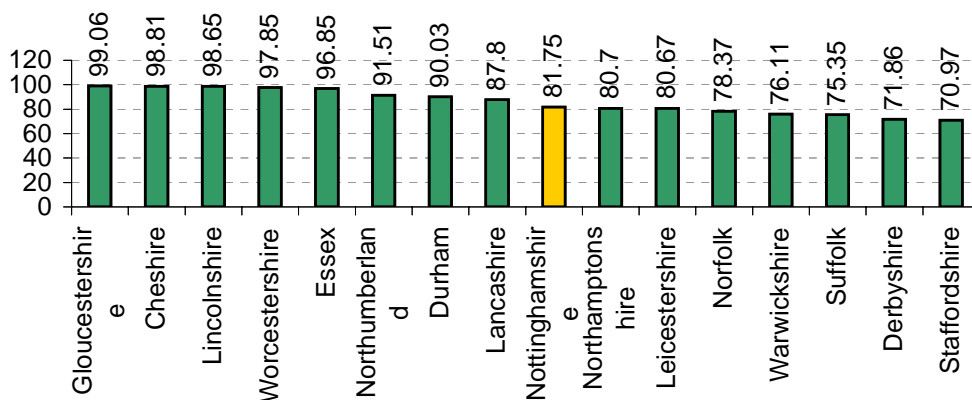
**Kigs - EX22 gross expenditure on residential care for older people per capita aged 75 and over 2004/05**



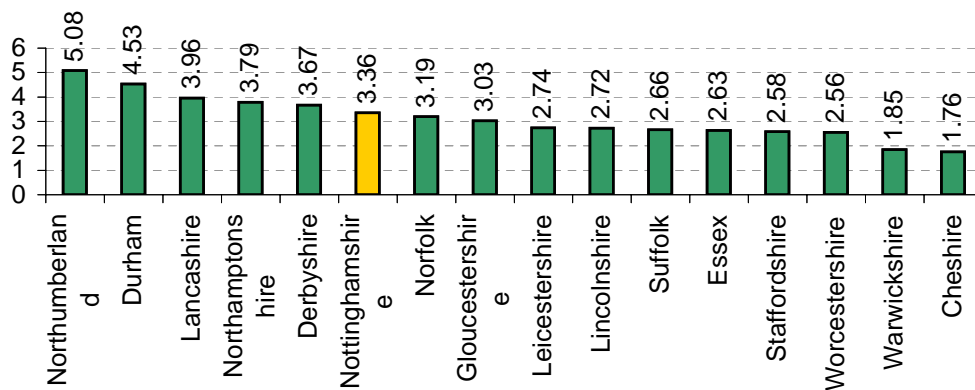
**Kigs - OA75 Long stay supported residents aged 65 and over receiving residential care per 1000 population 2004/05**



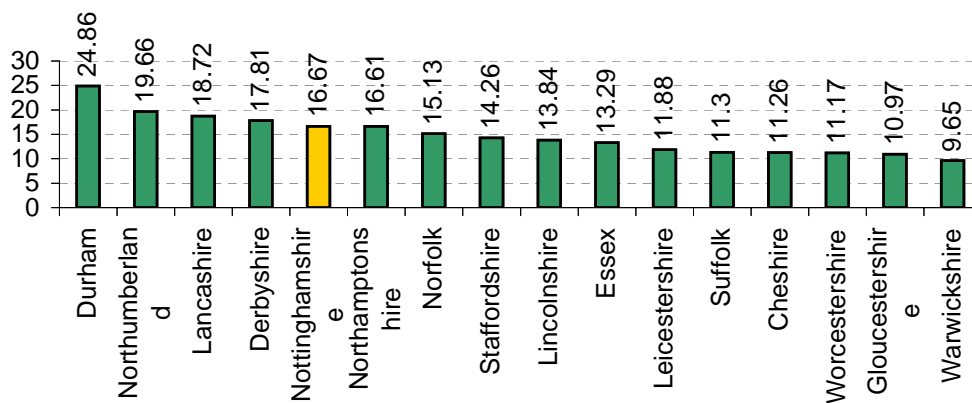
**Kigs - OA76 percentage of long stay supported residents aged 65 and over receiving residential care who are in independent homes 2004/05**



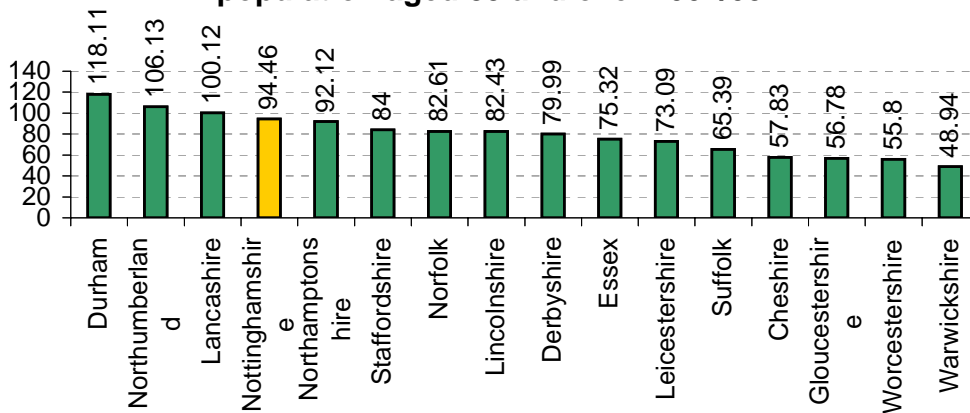
**Kigs - OA77 Long stay supported residents aged 65 to 74 receiving residential care per 1000 population aged 65 to 74 2004/05**



**Kigs - OA78 Long stay supported residents aged 75 to 84 receiving residential care per 1000 population aged 75 to 84 2004/05**



**Kigs - OA79 Long stay supported residents aged 85 and over receiving residential care per 1000 population aged 85 and over 2004/05**



**Kigs - OA80 Long stay supported residents receiving residential care aged 85 and over as a percentage of those aged 65 and over 2004/05**

