

Disestablishment of Posts – Summary Proposals

- disestablishment of the three Targeted Support Locality Teams
- disestablishment of the three Supporting Families Locality Teams
- disestablishment of the Family Resource Team
- disestablishment of the Family Assessment Teams
- disestablishment of the Homelessness Team
- disestablishment of Community Social Worker posts in the Early Help Unit

Disestablishment of Posts – Detailed Proposals

Disestablishment of the following posts:

- 0.8 FTE Homelessness Services Project Manager (Hay Band E) from 31 October 2015
- Targeted Support Operations Manager (Hay Band E) from 31 October 2015
- Troubled Families Coordinator (Hay Band E) from 31 October 2015
- Homelessness Services Manager (Hay Band D) from 31 October 2015
- 3 FTE Targeted Support Locality Managers (Hay Band D) from 31 October 2015
- 3 FTE Supporting Families Locality Managers (Hay Band D) from 31 October 2015
- 2 FTE Team Managers (Family Resource) (Hay Band D) from 31 October 2015
- 2.5 FTE Senior Practitioners (Hay Band C) from 31 October 2015
- 3.07 FTE Senior Professional Practitioners (Hay Band C) from 31 October 2015
- 3.07 FTE Parenting Coordinators (Hay Band B) from 31 October 2015
- 10 FTE District Coordinators (Hay Band B) from 31 October 2015
- 6 FTE Community Social Workers (Hay Band B) from 31 October 2015
- 3 FTE Senior Case Managers (Enforcement) (Hay Band B) from 31 October 2015
- Senior Case Manager (Homelessness) (Hay Band B) from 31 October 2015
- 23.84 FTE Targeted Support Case Managers (Hay Band A) from 31 October 2015
- 2.5 FTE Case Managers (Homelessness) (Hay Band A) from 31 October 2015
- 18 FTE Family Key Workers (Scale 5) from 31 October 2015
- Targeted Support Officer (Parenting) (Scale 5) from 31 October 2015
- 3.5 FTE Targeted Support Officer (Scale 5) from 31 October 2015
- 3.31 FTE Targeted Support Officers (Homelessness) (Scale 5) from 31 October 2015
- 15 FTE Family Resource Workers (Scale 5) from 31 October 2015
- 3 FTE Kinship Care Workers (Scale 5) from 31 October 2015
- Kinship benefits Officer (Scale 5) from 31 October 2015
- 8 FTE Family Assessment Workers (Scale 5) from 31 October 2015

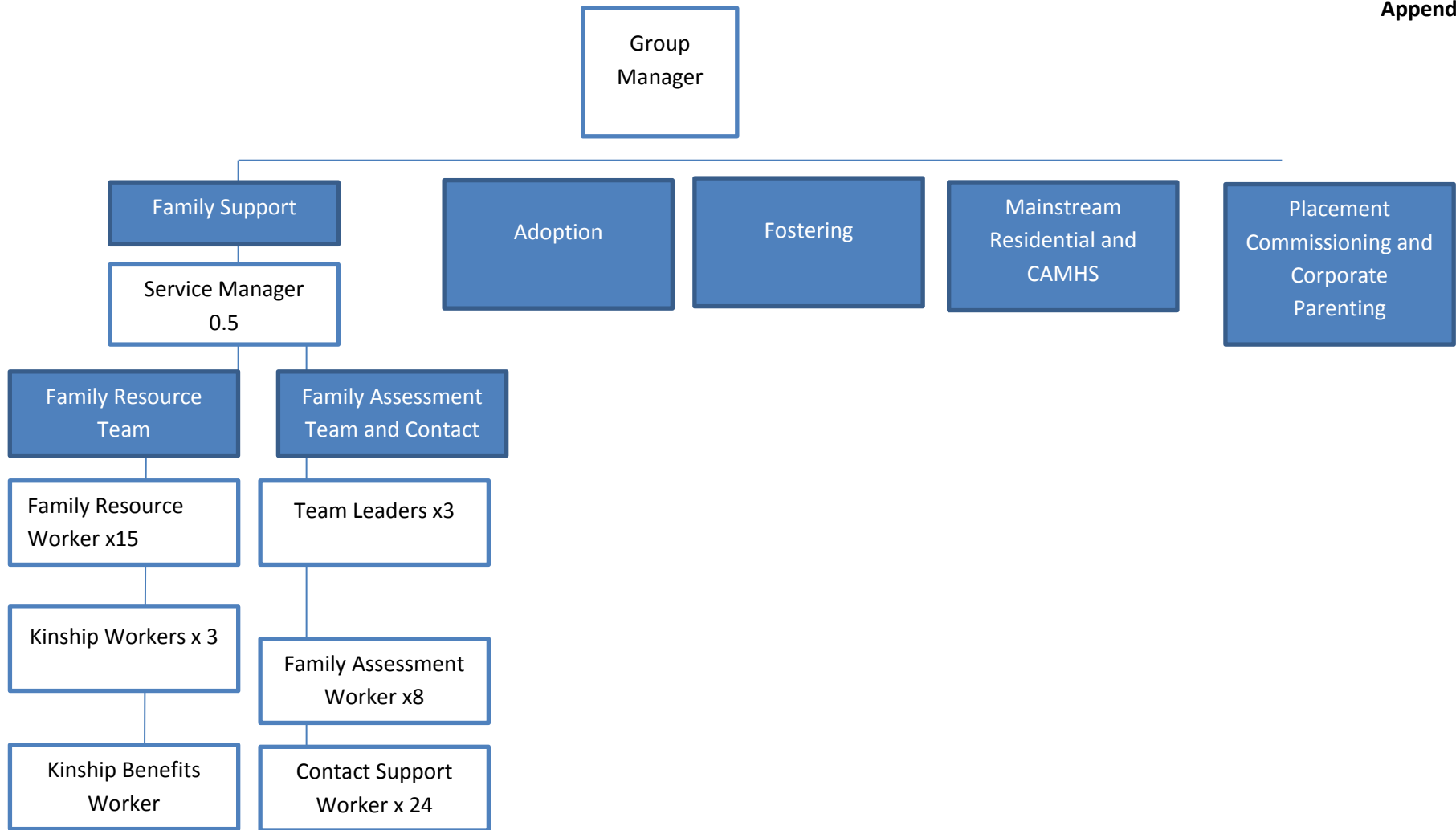
Establishment of Posts – Summary Proposals

- establishment of a Family Support Service for South Nottinghamshire
- establishment of a Family Support Service for North Nottinghamshire
- establishment of a Family Support Service for West Nottinghamshire

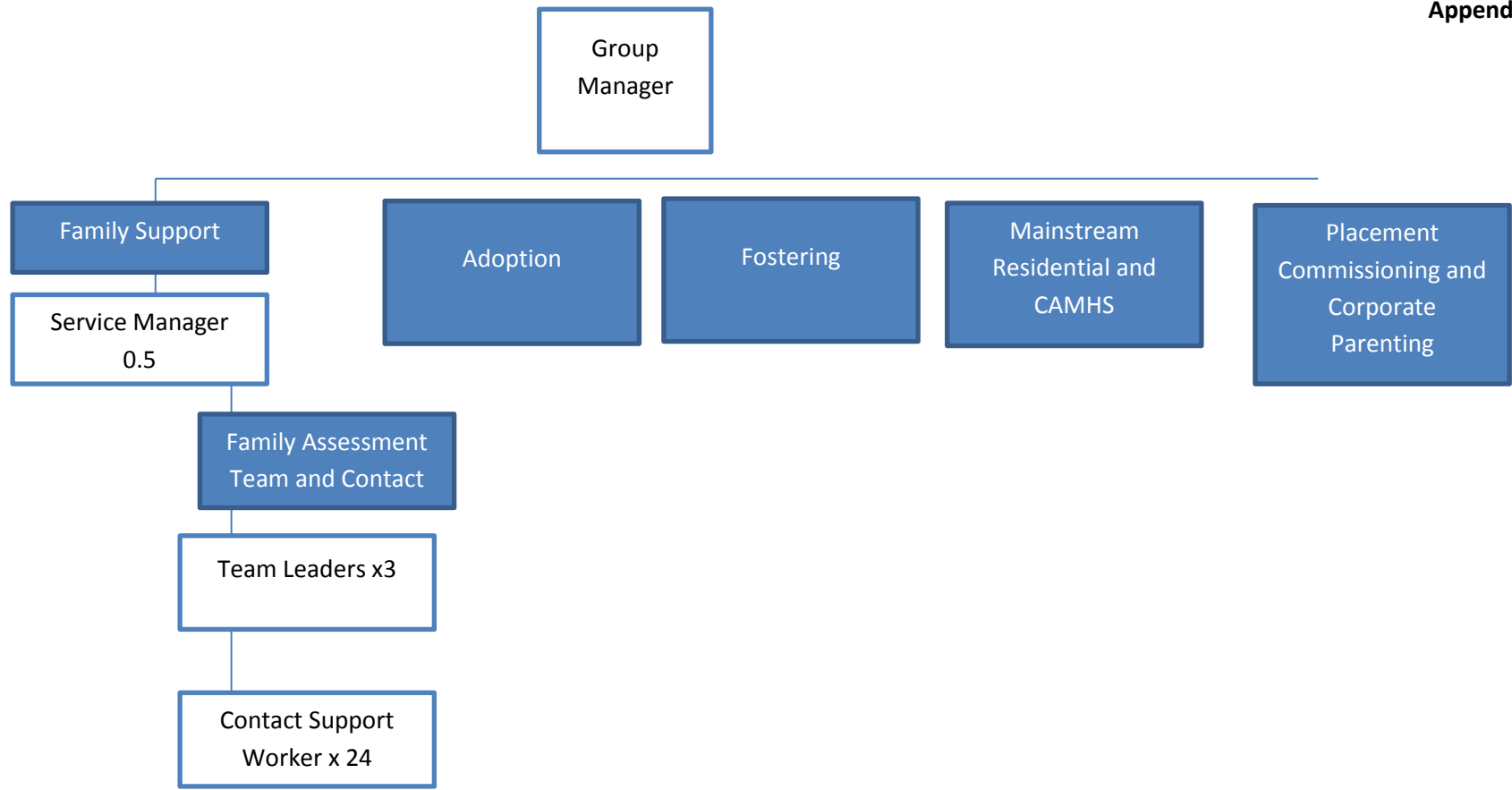
Establishment of Posts – Detailed Proposals

Establishment of the following posts:

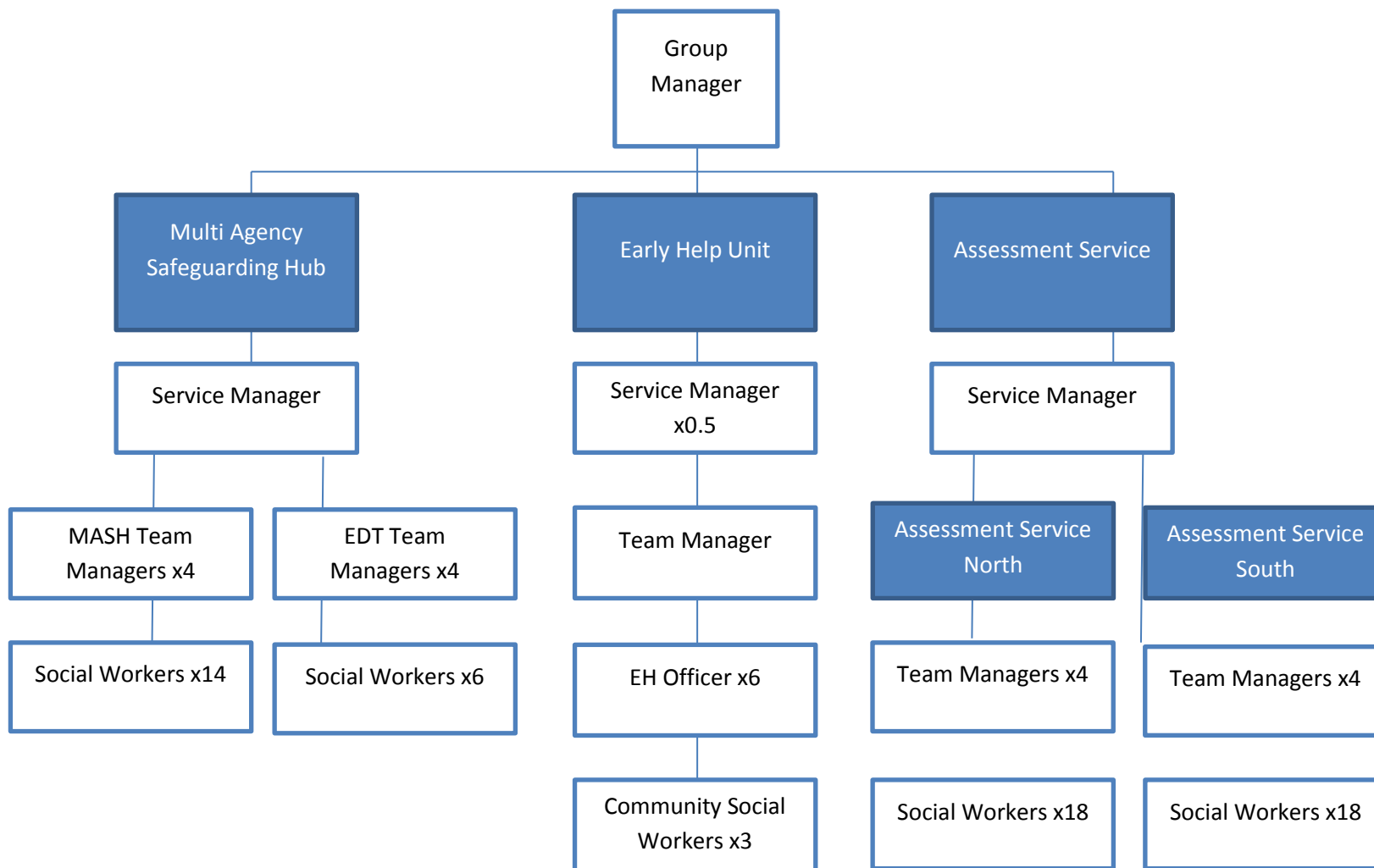
- 4.8 FTE Service Managers (indicative Hay Band E) from 1 November 2015
- 10 FTE Team Managers (indicative Hay Band D) from 1 November 2015
- 3.45 FTE Senior Professional Practitioners (indicative Hay Band C) from 1 November 2015
- 24 FTE Complex Case Manager/Unit Leader (indicative Hay Band B) from 1 November 2015
- 22.5 FTE Early Help Case Managers (indicative Hay Band A) from 1 November 2015
- 59.3 FTE Child and Family Workers (indicative Scale 5) from 1 November 2015
- 1.5 FTE Financial Responsibility Advisers (indicative Scale 5) from 1 November 2015
- Temporary Peer Support Networks Development Officer (indicative Hay Band A) from 1 November 2015 until 31 March 2017
- 2 FTE Premises Officers (Scale 5) from 1 April 2015 in the Quality and Improvement Group
- 0.5 FTE Departmental Support Officer (indicative Hay Band B) from 1 April 2015 in the Quality and Improvement Group



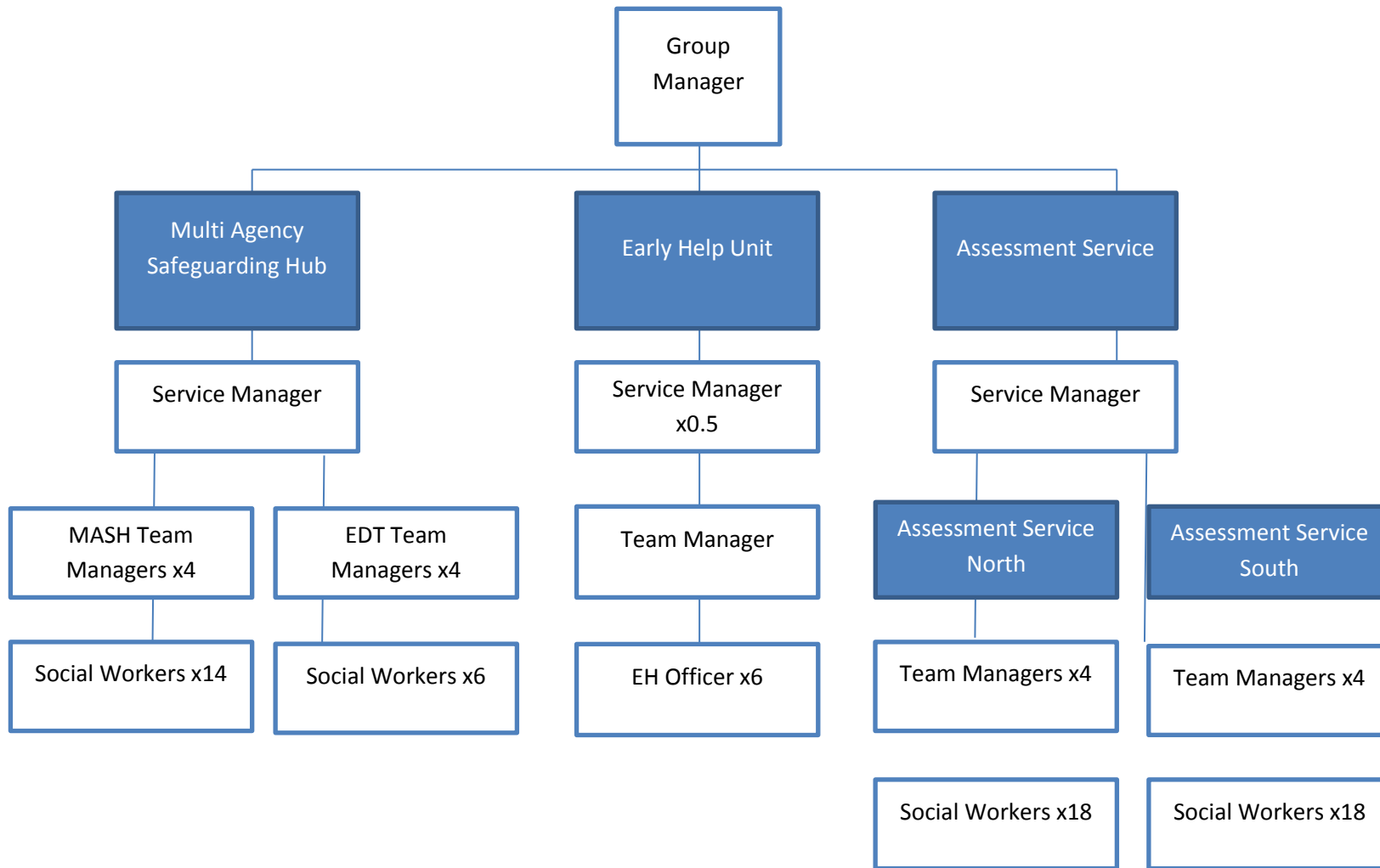
Access to Resources: Family Support: Current 10.2.2015



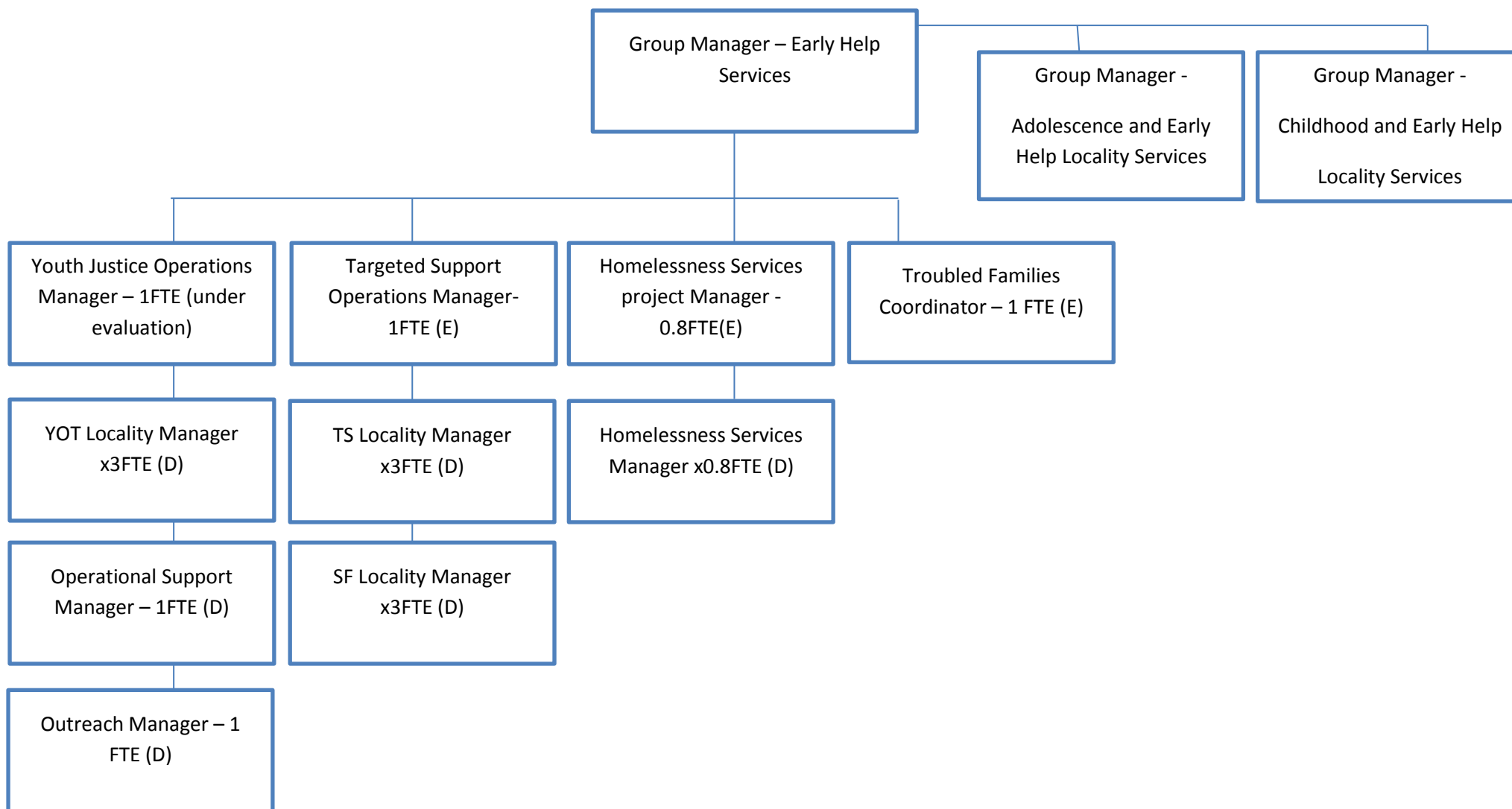
Access to Resources: Family Support: Proposed

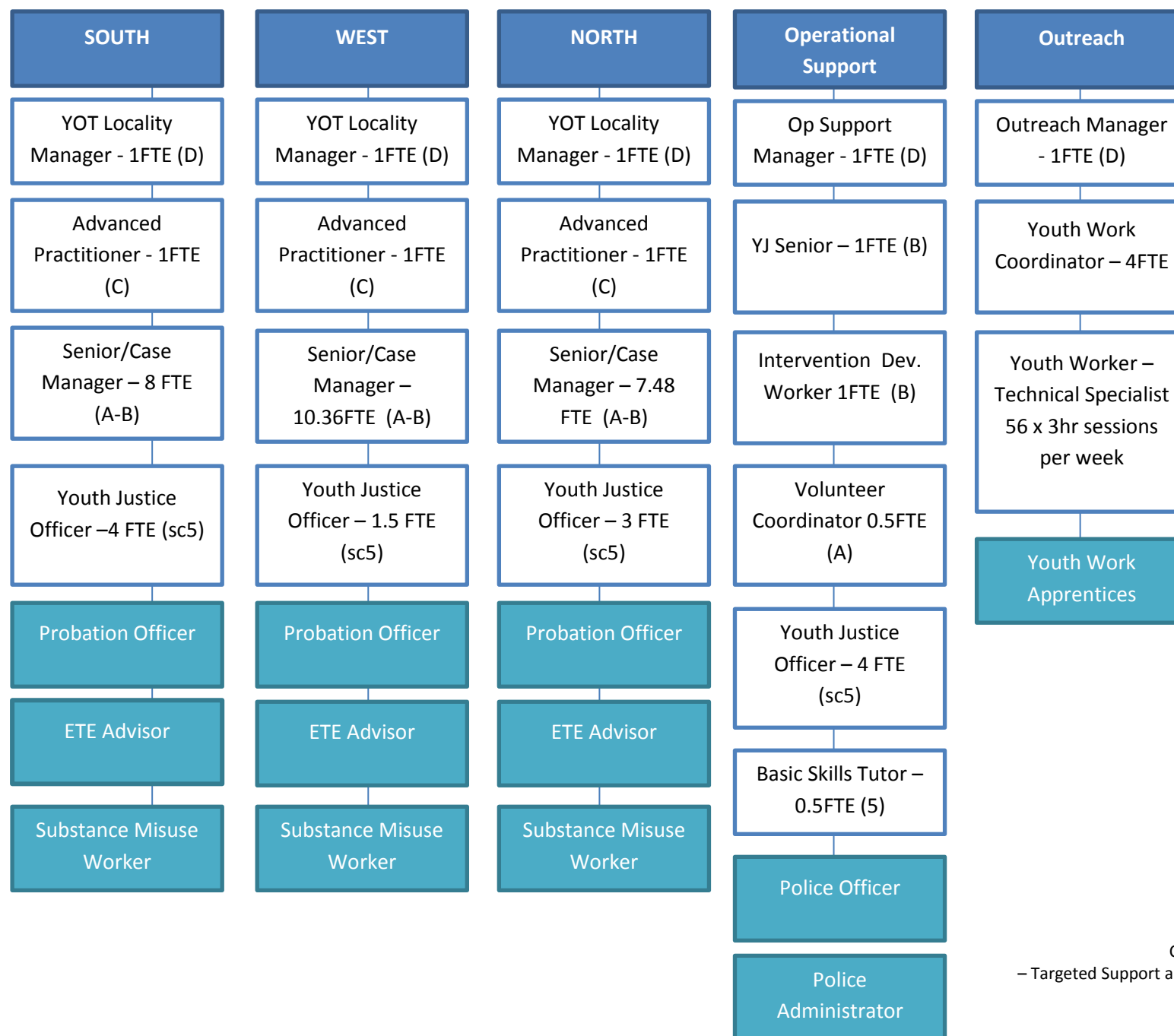


Social Work Services (3) Current 10 February 2015

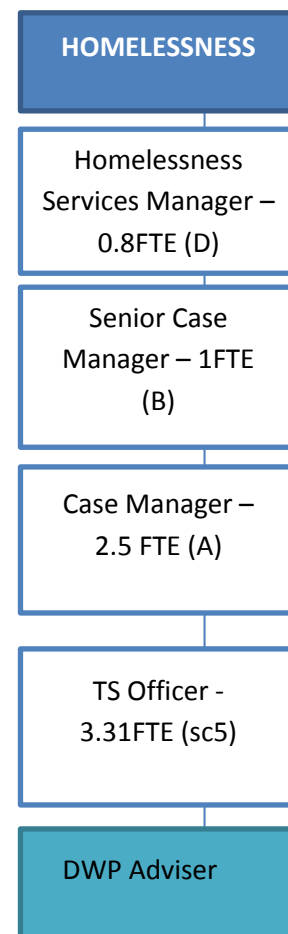


Social Work Services (3) Proposed

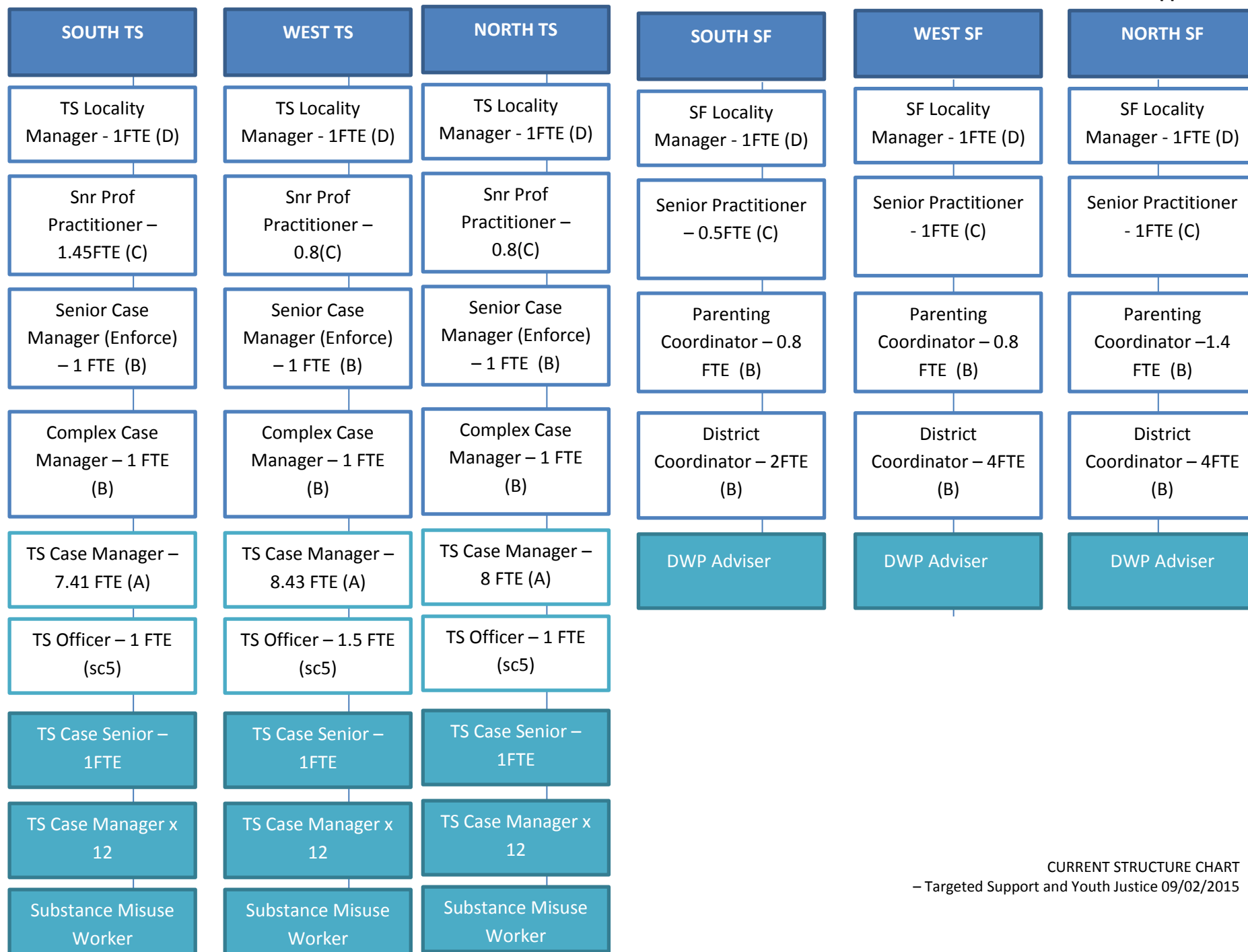


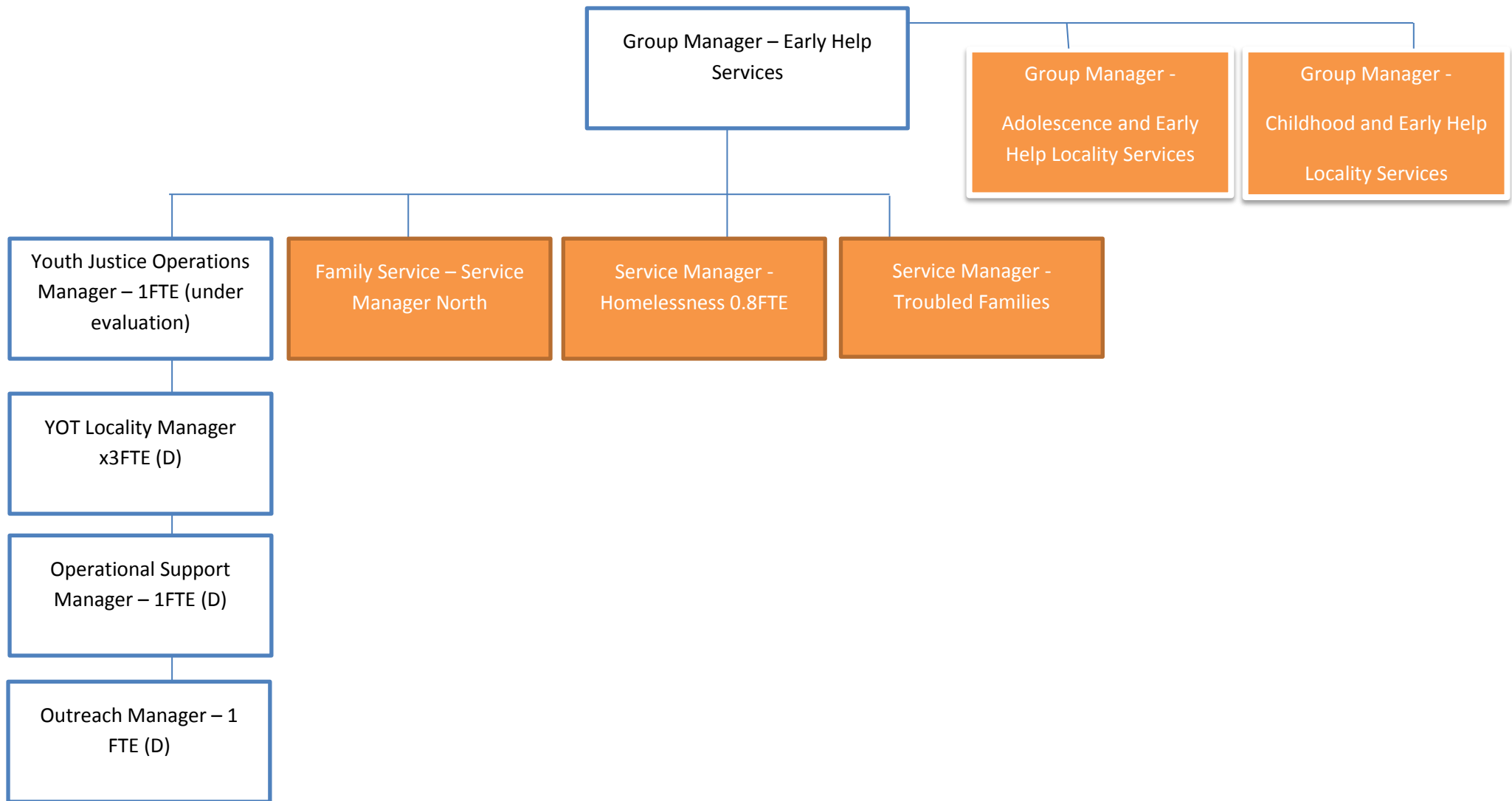


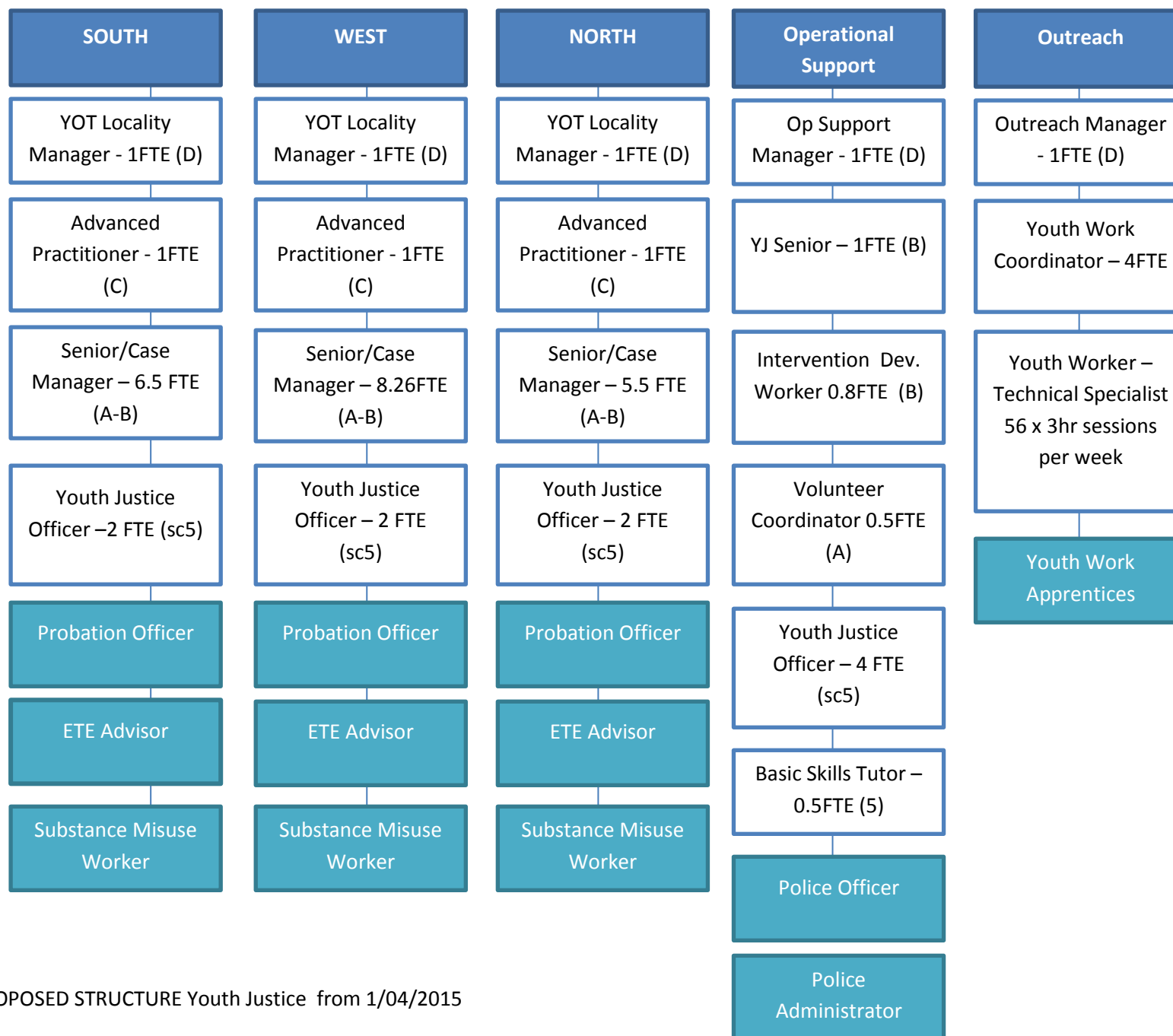
CURRENT STRUCTURE CHART
 – Targeted Support and Youth Justice 09/02/2015

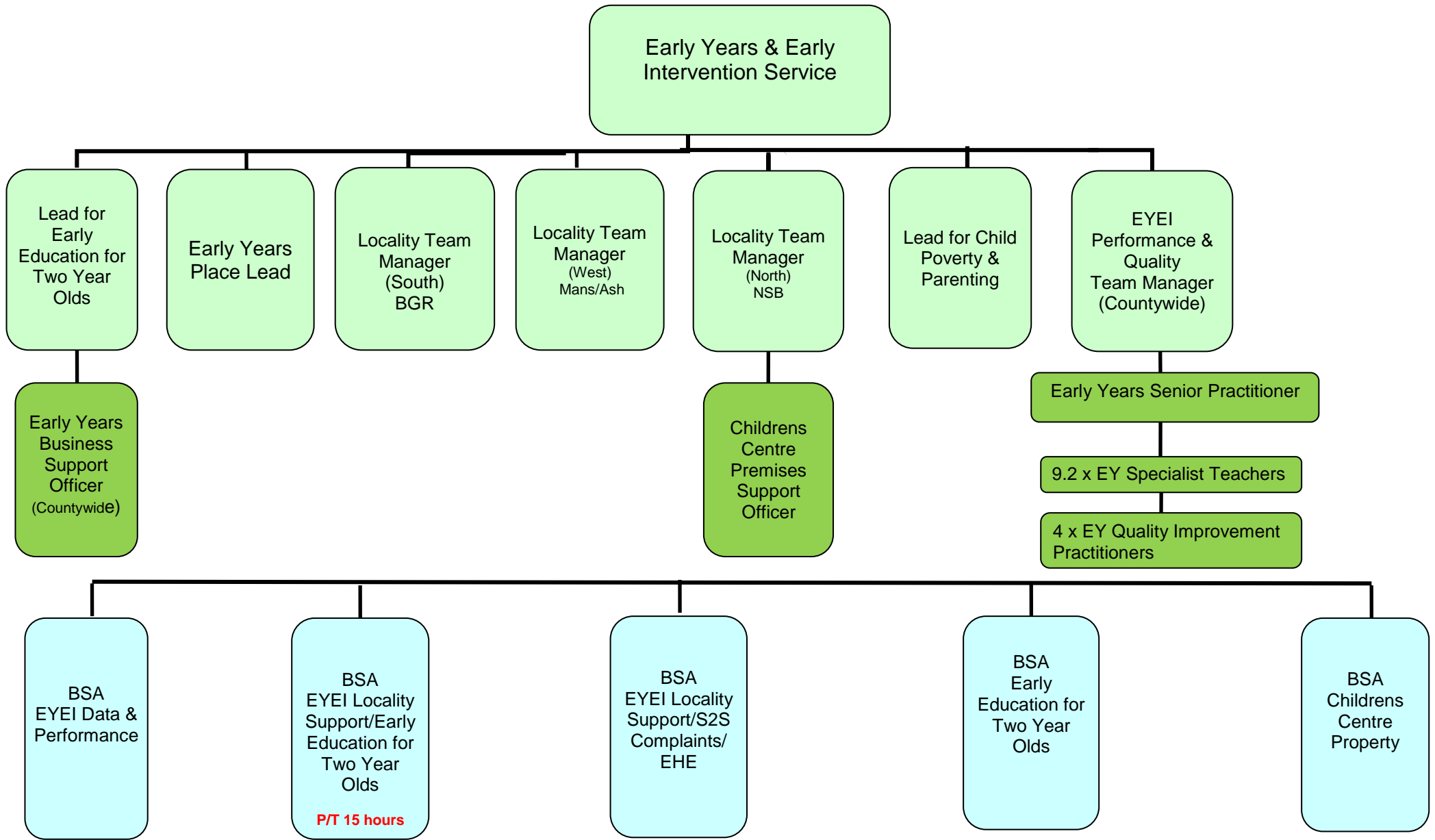


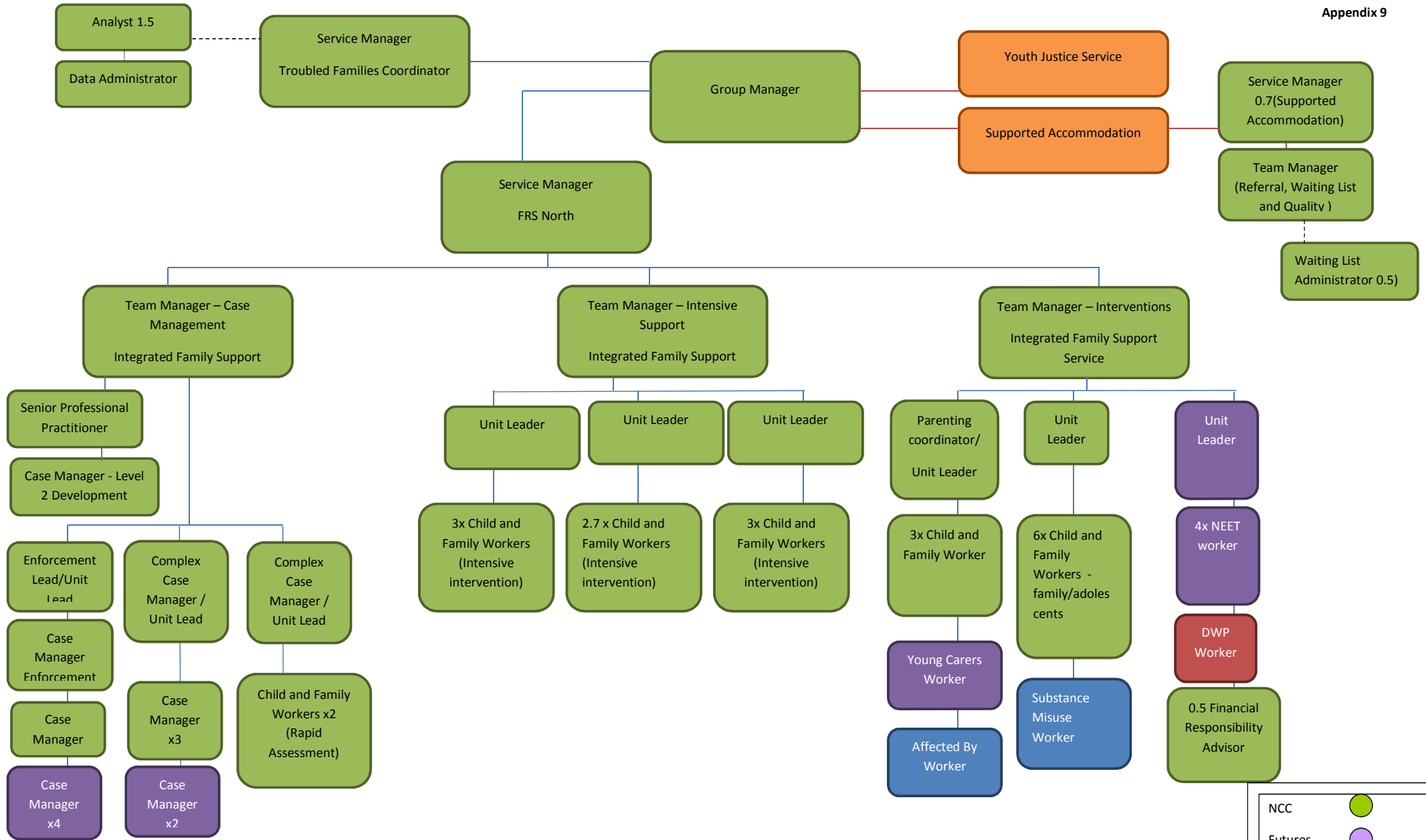
Appendix 6





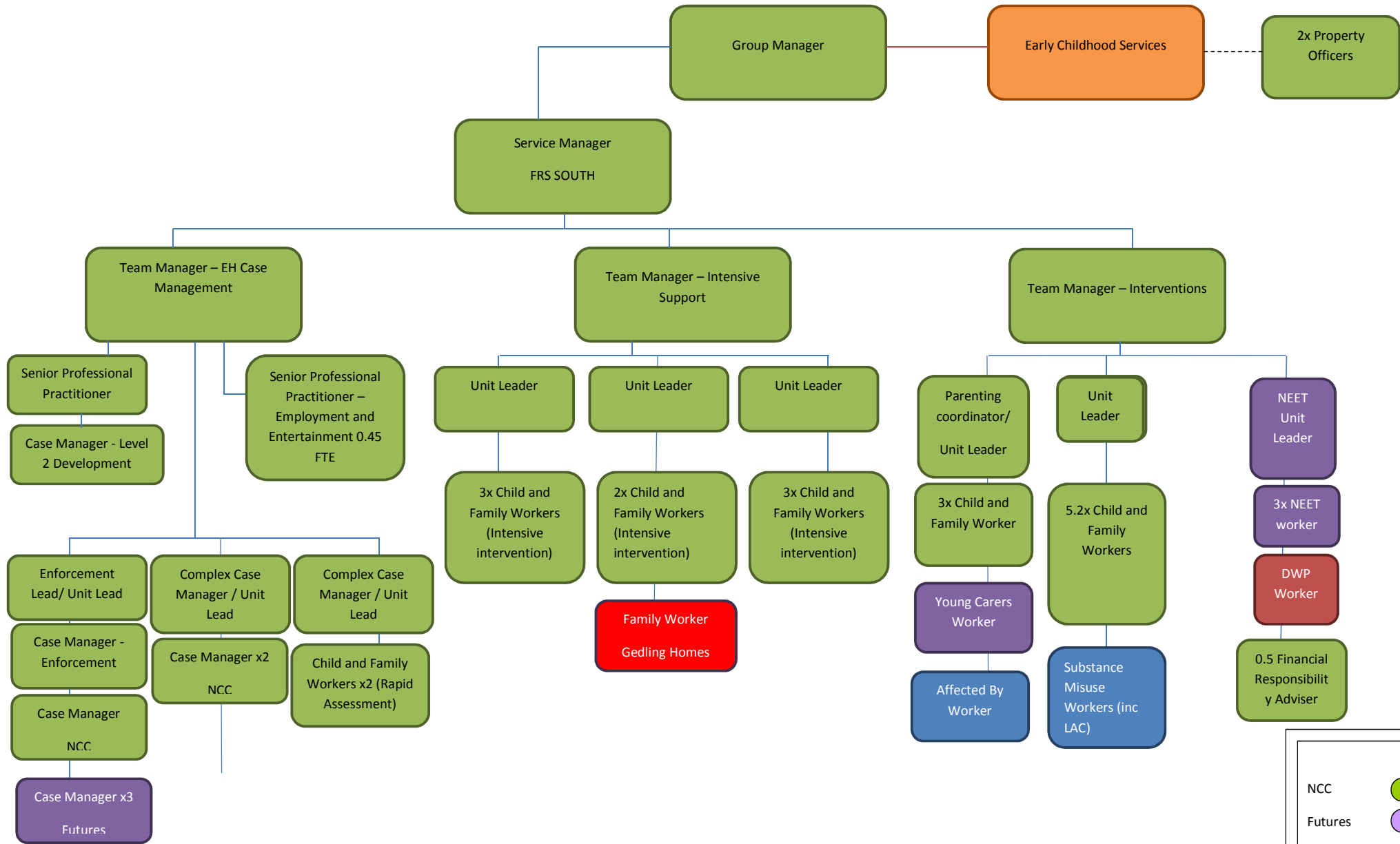




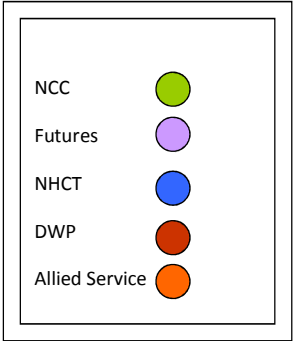


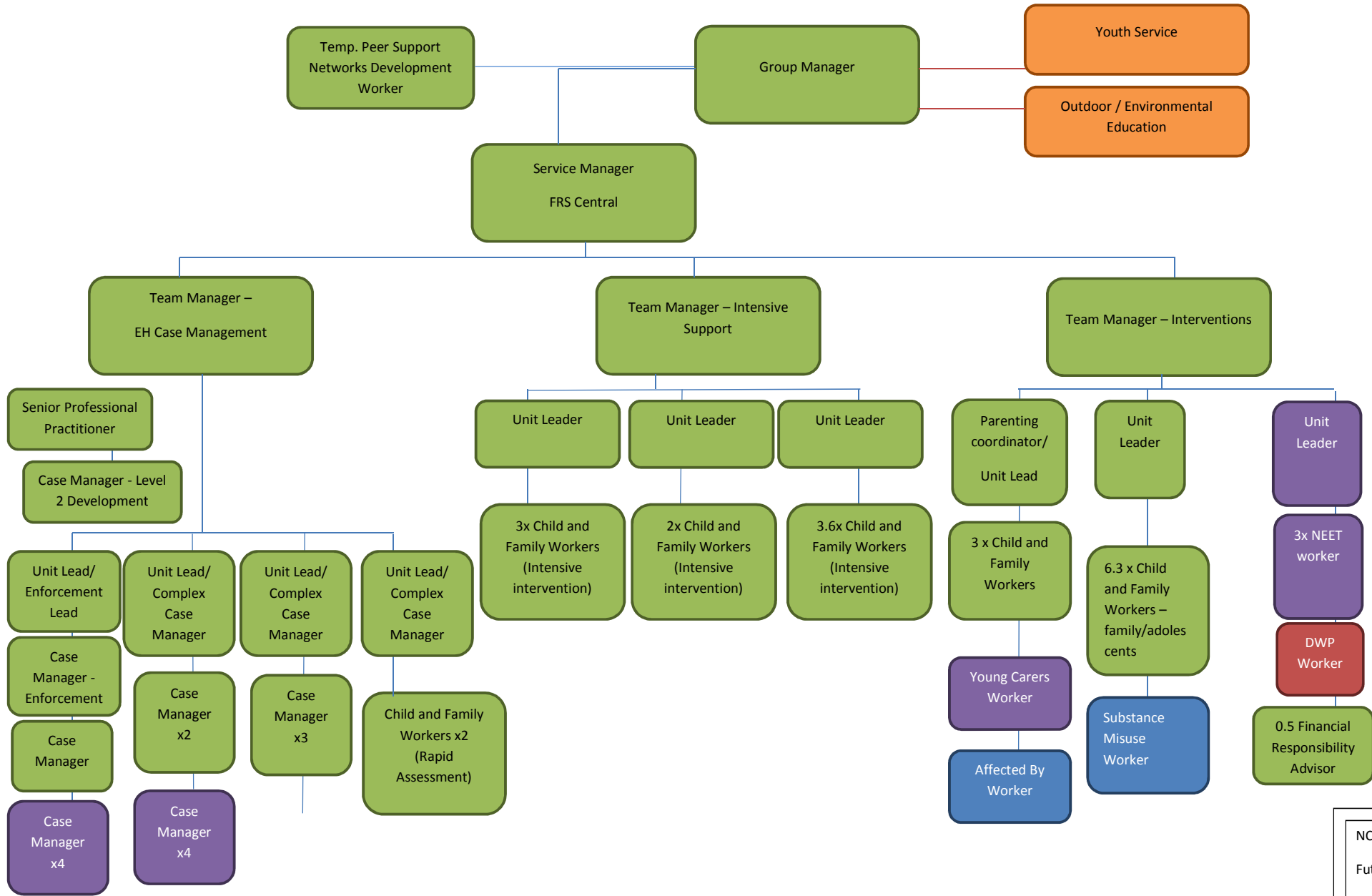
NORTH – From 1 Nov 15

NCC	●
Futures	●
NHCT	●
DWP	●
Allied Service	●



SOUTH- From 1 Nov 15





WEST- From 1 Nov 15

NCC	●
Futures	●
NHCT	●
DWP	●
Allied Service	●