

Joint Committee on Strategic Planning and Transport

Friday, 12 April 2024 at 10:30

County Hall, West Bridgford, Nottingham, NG2 7QP

AGENDA

- | | | |
|---|---|---------|
| 1 | Minutes 15 December 2023 | 3 - 8 |
| 2 | Apologies for Absence | |
| 3 | Declarations of Interests by Members and Officers:- (see note below) | |
| 4 | Update on Mineral and Waste Matters | 9 - 12 |
| 5 | Transport Update | 13 - 14 |
| 6 | Greater Nottingham Joint Planning Advisory Board Update | 15 - 20 |
| 7 | Future Operation of the Joint Committee on Strategic Planning and Transport | 21 - 30 |

Notes

- (1) Councillors are advised to contact their Research Officer for details of any Group Meetings which are planned for this meeting.
- (2) Members of the public wishing to inspect "Background Papers" referred to in the reports on the agenda or Schedule 12A of the Local Government Act should contact:-

- (3) Persons making a declaration of interest should have regard to the Code of Conduct and the Council's Procedure Rules. Those declaring must indicate the nature of their interest and the reasons for the declaration.

Councillors or Officers requiring clarification on whether to make a declaration of interest are invited to contact Sarah Ashton (Tel. 0115 977 3962) or a colleague in Democratic Services prior to the meeting.

- (4) Councillors are reminded that Committee and Sub-Committee papers, with the exception of those which contain Exempt or Confidential Information, may be recycled.
- (5) This agenda and its associated reports are available to view online via an online calendar - <http://www.nottinghamshire.gov.uk/dms/Meetings.aspx>



Joint Committee on Strategic Planning and Transport

Minutes of the meeting held at County Hall on 15 December 2024 from 10.30 am to 11.43 am

Membership

Present

Councillor Neil Clarke MBE (Chair)
Councillor Jim Creamer
Councillor John Cottee (substitution)
Councillor Michael Edwards
Councillor Sam Harris

Absent

Councillor Steve Carr
Councillor Helen Kalsi
Councillor Nick Raine (Vice Chair)
Councillor John Ogle

Substitution:

Councillor John Cottee substituting for Cllr John Ogle for this meeting only

Colleagues, partners, and others in attendance:

Sarah Ashton	- Democratic Services Officer, Nottinghamshire County Council
Matt Gregory	- Head of Planning Strategy and Geographic Information,
Jonathan Smith	Nottingham City Council
	- Interim Group Manager, Planning
Stephen Pointer	- Team Manager, Planning Policy, Nottinghamshire County Council
Kevin Sharman	- Team Manager, Transport, Nottinghamshire County Council
Tim Bellenger	- Transport Strategy Manager, Nottingham City Council

1. Minutes of last meeting 8 September 2023

The minutes of the last meeting on 8 September 2023, having been previously circulated, were confirmed and signed by the Chairman.

2. Apologies for absence

Apologies were received from Councillor Helen Kalsi (other) Councillor John Ogle (other) Councillor Nick Raine (other)

3. Declarations of interest by Members and Officers

None

4. Levelling Up and Regeneration Act Update

Matt Gregory, Head of Planning Strategy and Geographic Information, Nottingham City Council presented a power point (appendix)

Members discussed possible implications and were concerned that the process would be confusing and difficult to manage

RESOLVED: 2023/15

That the report and appendix be noted

5. Update on Mineral and Waste Matters

Stephen Pointer, Team Manager, Planning Policy, informed the Committee of the latest mineral and waste matters and an update on the waste local plan.

Members discussed the site visit to the Bio Dynamic and Enva waste processing facilities.

RESOLVED: 2023/16

That the Mineral and Waste update report be noted

6. Transport Update

Tim Bellenger, Transport Strategy Manager, Nottingham City Council Team Manager, Nottingham City Council, informed the Committee of the latest mineral and waste matters and an update on the waste local plan.

RESOLVED: 2023/17

That the Mineral and Waste update report be noted

7. Greater Nottingham Joint Planning Advisory Board Update

Matt Gregory, Head of Planning Strategy and Geographic Information, Nottingham City Council, updated the Committee on the Greater Nottingham Joint Planning Advisory Board (JPAD):

RESOLVED: 2023/18

That the contents of the report be noted

8. Joint Committee Work Programme

Stephen Pointer, Team Manager, Planning Policy, informed the Committee that it would be difficult to look ahead as there was no indication how things would change when we become a combined authority with Derby City and Derbyshire County Councils

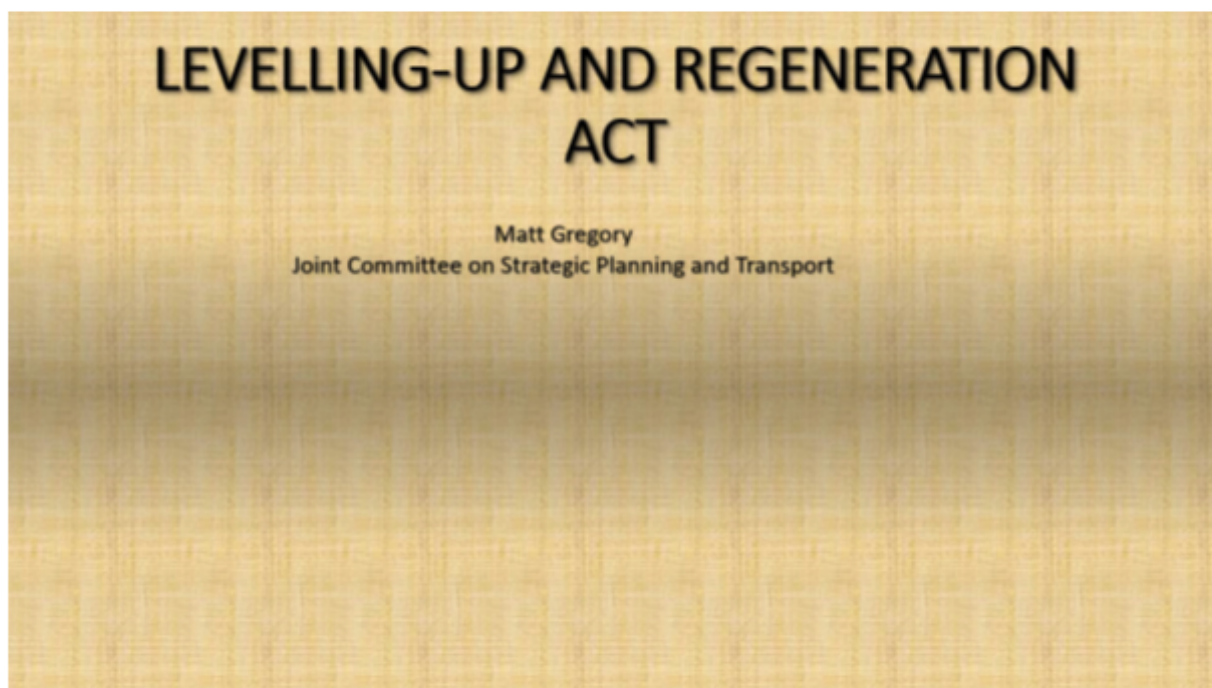
RESOLVED: 2023/19

That:

- 1) the Committee's Joint Work Programme be noted
- 2) the Committee didn't identify any partnership work areas at this time

The meeting closed at 11:43 am

CHAIRMAN



LEVELLING-UP AND REGENERATION ACT

- Consultation closed 18 October
- Royal assent 26 October
- Begins 2024 (associated regulations & changes to national policy)
- Further consultations, detailed technical work and secondary legislation
- Significant implications for LPAs
- Highlights include.....

LEVELLING-UP AND REGENERATION ACT

- Consultation closed 18 October
- Royal assent 26 October
- Begins 2024 (associated regulations & changes to national policy)
- Further consultations, detailed technical work and secondary legislation
- Significant implications for LPAs
- Highlights include.....

Design Code

- All LPAs will require a DC
- Covers whole area
- Can have more detail for specific areas or sites
- National guidance applies if not prepared/adopted
- Gedling and Development Company have been part of pilots

Infrastructure Levy

- National scheme to replace CIL and S106
- Rates and thresholds set locally
- “At least as much on site affordable housing”
- Subject to examination
- LPAs will also need to prepare Infrastructure Delivery Strategies

New National Development Management Policies

- Each LPA will prepare one Local Plan covering ‘locally specific matters’
- Allocations, infrastructure requirements, good design principles
- NDMPs will cover generic matters
- Eg Heritage, Green Belt
- Local Plans will not be allowed to repeat them
- Subject to consultation
- New NPPF will therefore focus on plan making

Duty to cooperate replaced

- A new ‘alignment test’
- No details
- Will be subject to consultation
- Inspectorate ‘gateway checks’ to pick up soundness issues early in process

Voluntary ‘Spatial Development Strategies’

- Groups of LPAs can collaborate to prepare SDS
- Applies to new style County Combined Authorities
- Consistent strategic planning policies
- Covering cross cutting issues

END

Meeting:	JOINT COMMITTEE ON STRATEGIC PLANNING AND TRANSPORT
Date:	12th April 2024
From:	Joint Officer Steering Group

UPDATE ON MINERAL AND WASTE MATTERS

1. **SUMMARY**

- 1.1 This report informs the Committee of the latest position with regard to mineral and waste matters which affect both City and County Councils.

2. **MINERAL PLANNING**

- 2.1 The Nottinghamshire Minerals Local Plan was adopted in March 2021. A statutory review of the Plan will take place in 2026 to determine if all or part of it requires updating.
- 2.2 The County Council is supporting the annual survey of aggregate sales which helps to monitor trends in local demand for aggregates (sand, gravel, and crushed rock). This is being co-ordinated by the East Midlands Aggregate Working Party which brings together representatives of mineral planning authorities and mineral operators to who meet to discuss delivery of aggregates on a regional basis. The Working Party is chaired by the County Council Planning Policy Manager.
- 2.3 This year a common nationwide survey is being carried out which happens every four years and helps ensure consistent national data on aggregate production. British Geological Survey is carrying out the study as commissioned and funded by DHLUC, but each mineral planning authority is supporting the survey by helping to disseminate, chase returns, collate and check the data received. The survey was issued on 4 March and operators have until the end of May to return their sales data for 2023. This is then aggregated to avoid commercially sensitive data being revealed from individual sites.
- 2.4 A revised planning application has been submitted to the County Council and Nottingham City Council to allow for the extraction, processing, sale and distribution of sand and gravel, and subsequent restoration together with the necessary associated infrastructure and access improvements on land off Green Street, Mill Hill and land at Barton in Fabis off Chestnut Lane.
- 2.5 The Nottinghamshire Minerals Local Plan, adopted in March 2021, has allocated the land at Mill Hill near Barton in Fabis as a new sand and gravel quarry with an estimated reserve of three million tonnes. The site profile (MP2p) contained within the Minerals Local Plan provides a detailed description of the site characteristics and outlines the implementation issues that may arise and what issues will need to be addressed within a planning application. The new

application seeks to extract aggregates over a smaller footprint to that which is proposed in the Minerals Local Plan while, at the same time, extracting aggregates from land within the administrative area of Nottingham City.

- 2.6 As a consequence of a review of geological information and the consultation responses received during the consideration of a previously withdrawn planning application, some areas currently designated within the Minerals Local Plan have been omitted from the proposed extraction area boundary in the new application. The application therefore seeks now to extract a total of 2.55 saleable million tonnes (Mt) of aggregates; around 2.05 saleable Mt are within land allocated in the Nottinghamshire Minerals Local Plan (compared to 3 Mt identified in the Mineral Plan) , the balance of 0.50 saleable Mt is within the administrative area of Nottingham City Council.
- 2.7 Officers are presently assessing the application which was received in February. Considering the application forms an important cross boundary matter, members of the Joint Committee may wish to receive a further presentation on this proposal in due course. The views of the Joint Committee are sought.

3. WASTE PLANNING

- 3.1 The County and City Councils are preparing a single joint Waste Local Plan to replace the Waste Core Strategy adopted by both Councils in December 2013. An initial consultation on the new Local Plan, including a 'Call for Sites' was completed in May 2020. A Draft Waste Local Plan was approved by Nottinghamshire County and Nottingham City Council in January 2022. The Draft Waste Local Plan was consulted on between the 7th February and 4th April 2022.
- 3.2 The Pre-Submission Draft Plan was published for formal consultation on 30 August with a six-week period to invite representations on the Plan's Soundness (i.e., is the Plan justified, effective, compliant with national planning policy, and meets the requirements of the relevant regulations). Following officer consideration and the compiling of additional submission documents, the Waste Plan was approved for submission to the Secretary of State by the County Council on 7 December and the City Council on 4 March . It was submitted to the Planning Inspectorate on Tuesday 5 March and a Planning Inspector, Stephen Normington has now been appointed to examine the Plan.
- 3.3 Following this process which will involve the holding of public hearing sessions (currently proposed for week commencing 14 October), the Inspector will prepare a report to both Councils. Subject to any modifications being recommended and accepted, the Plan can be then adopted by both Councils. It is hoped that the Plan will be able to be adopted in the first quarter of 2025.

4. OTHER MATTERS

- 4.1 Following the site visit made to Bio Dynamic and Enva in December, a further visit has been planned for members of the Joint Committee to a waste processing facility. The City Council had arranged a visit to the Eastcroft energy from waste processing facility in Nottingham on Thursday 14 March but owing to a last-minute operational issue with the Eastcroft facility the visit had to be postponed. The visit will be re-scheduled shortly.

5 RECOMMENDATIONS

- 5.1 That the Joint Committee note the report on mineral planning issues and the progress on the preparing and adopting an up-to-date Joint Waste Local Plan.

6 BACKGROUND PAPERS REFERRED TO IN COMPILING THIS REPORT

- 6.1 [County Application - Mineral extraction Mill Hill , Barton in Fabis](#)
- 6.2. [City application - Mineral extraction - Land at Barton In Fabis](#)

Contact Officers

Stephen Pointer,
Team Manager Planning Policy,
Nottinghamshire County Council
Tel 0115 993 9388
Email: stephen.pointer@nottscc.gov.uk

Matt Gregory,
Head of Planning Strategy and Geographic Information.
Nottingham City Council
Tel: 0115 876 3974
Email: matt.gregory@nottinghamcity.gov.uk

Meeting:	JOINT COMMITTEE ON STRATEGIC PLANNING AND TRANSPORT
Date:	12 th April 2024
From:	Joint Officer Steering Group

Transport Update

1 SUMMARY

- 1.1 This report provides an update on the transport related issues across the Greater Nottingham conurbation. The report gives an update on items of interest to both authorities.

2 BACKGROUND

Train service developments

- 2.1 At a recent conference (Modern Railways : Rail in the Midlands) train operators disclosed that a review of services currently operated by Cross Country, is investigating with the Department for Transport a possible realignment of services on the Nottingham – Derby – Birmingham and Leicester – Birmingham corridors.
- 2.2 This would potentially include making the Nottingham – Derby – Birmingham – Cheltenham – Cardiff service more akin to an Inter-City type service with appropriate rolling stock: and adding an additional hourly service Nottingham – Derby – Birmingham – Cheltenham – Bristol to give a 30 minute interval service between Nottingham and Cheltenham and a 15 minute interval service between Derby and Cheltenham. Services to local stations between Nottingham and Birmingham would be transferred to either East or West Midlands Railway. There is potential to slightly reduce journey times between Nottingham and Birmingham.
- 2.3 An additional change would see an enhancement to services between Birmingham – Leicester – Peterborough – Cambridge – Stansted Airport, with local services between Leicester and Birmingham transferred to either East or West Midlands Railway.

Nottingham – Leicester – Coventry rail passenger and freight study

- 2.4 Midlands Connect are currently reviewing the business case and conducting a timetable study into developing a through rail service on the Nottingham – Leicester – Coventry corridor. This includes the possibility of a rail underpass at Nuneaton, and also assessing the implications for providing easier rail freight access to sites in the East Midlands from the ports of Southampton and Avonmouth.
- 2.5 For passenger services an hourly service over the corridor is being considered. The aim is to increase connectivity to Coventry from Leicester and Nottingham, where the modal share for rail is currently much lower due to the numbers of connections required and long journey times compared to journeys to other cities of a similar size and distance away.

Rail industry structure : publication of the Rail Reform Bill (2024)

- 2.6 On the 21st February 2024 the government published its' proposed Rail Reform Bill¹ that would establish a Integrated Rail Body (IRB) to oversee the industry. The government expects Network Rail to become the designated Integrated Rail Body. The Bill proposes that functions currently exercised by the Secretary of State would be transferred to the new body, this will include any current and future franchises or contracts for the operation of passenger rail services primarily in England (not Wales or Scotland or devolved to a regional authority). The IRB will be required to seek the approval of the Secretary of State for its' policies.
- 2.7 The IRB will be headquartered in Derby.
- 2.8 The Bill also proposes amendments to the role of Office of Rail and Road to reflect the transfer of powers to the IRB, to ensure competition and access to the network for private operators.
- 2.9 The Bill proposes amendments to the powers and duties of the consumer representative bodies Transport Focus and London TravelWatch to reflect the role of the IRB and give them new powers to refer matters to the IRB where they believe there has been a breach of either licenses, franchises or passenger contracts.
- 2.10 The Bill proposes that Disabled Persons' Transport Advisory Committee (DPTAC) should now also advise the IRB, as well as the Secretary of State on matters relating to transport provision for disabled people.

3 RECOMMENDATION(S)

- 3.1 It is recommended that the contents of this report be noted.

4 BACKGROUND PAPERS REFERRED TO IN COMPILING THIS REPORT

Speeches given at the Modern Railways : Rail in the Midlands Conference 24th January 2024.

Contact Officers

Chris Carter, Development and Growth, Nottingham City Council

Tel: 0115 8763940

Email: chris.carter@nottinghamcity.gov.uk

Kevin Sharman, Place Department, Nottinghamshire County Council

Tel: 0115 9772970

Email: kevin.sharman@nottscc.gov.uk

¹ [Draft Rail Reform Bill - GOV.UK \(www.gov.uk\)](https://www.gov.uk/government/bills-2024)

Meeting:	Joint Committee on Strategic Planning and Transport
Date:	12 April 2024
From:	Joint Officer Steering Group

Greater Nottingham Joint Planning Advisory Board Update

1 Summary

- 1.1 The Greater Nottingham Joint Planning Advisory Board (JPAB) oversees the preparation of aligned Local Plans across Greater Nottingham, and the implementation of projects funded through the partnership. This report updates the Joint Committee on the work of JPAB, and other strategic planning matters within the remit of the Committee.

2 Background

- 2.1 The last meeting of JPAB was held on 5 March 2024, the latest available approved minutes (dated 12 December 2023) are appended to this report. All JPAB meeting agenda papers are available to view at <https://www.gnplan.org.uk/meetings/>.

Greater Nottingham Strategic Plan

- 2.2 JPAB received a presentation on the forthcoming Greater Nottingham Housing Need Assessment, prepared by Icenic consultants. The Assessment will be a key part of the Greater Nottingham Strategic Plan evidence base, and its principal purpose is to recommend amount and type of affordable housing required by each authority, to form the basis of planning policies in the Greater Nottingham strategic Plan.
- 2.3 JPAB received an update on the progress of preparing the Strategic Plan. This highlighted areas where evidence was still being prepared, such as Transport Modelling, carbon reduction in new development, biodiversity net gain and Habitats Regulations Assessment.
- 2.4 Subject to the successful completion of these evidence base projects, the aim is to publish the regulation 19 version of the Plan in summer 2024, to allow for formal representations.
- 2.5 In terms of other Local Plans across Greater Nottingham, Ashfield District Council undertook a regulation 19 consultation on its draft Local Plan, which closed on 29 January 2024. Responses are now being considered. The Erewash Local Plan is currently at examination, hearing dates are anticipated shortly following the completion of further consultation work requested by the Inspector.

2.6 The next meeting of JPAB is on 4 June 2024.

3 Recommendation(s)

3.1 It is recommended that the Joint Committee note the contents of this report.

4 Background papers referred to in compiling this report

4.1 JPAB Papers, 5 March 2023.

Contact Officer

Matt Gregory
Head of Planning Strategy and Geographic Information
Nottingham City Council
matt.gregory@nottinghamcity.gov.uk
0115 876 3981

APPENDIX 1

ITEM 3	MINUTES OF THE GREATER NOTTINGHAM JOINT PLANNING ADVISORY BOARD (JPAB) VIRTUAL MEETING HELD ON TUESDAY 12 DECEMBER 2023 VIA MS TEAMS
---------------	---

1 INTRODUCTION AND APOLOGIES

Apologies of absence were received from Councillors Renwick and R Jackson.

Present at the meeting:

Broxtowe Borough Council: Councillor M Radulovic MBE (Chair)

Gedling Borough Council: Councillor J Hollingsworth (Vice-Chair)

Rushcliffe Borough Council: Councillor R Upton

Ashfield District Council Councillor M Relf

Nottinghamshire County Council Councillor N Clarke

Officers in Attendance:

Ashfield: Christine Sarris

Broxtowe: Ruth Hyde, Dave Lawson and Mark Thompson

Erewash: Oliver Dove

Gedling: Alison Gibson and Mike Avery

Nottingham City: Paul Seddon

Nottinghamshire County Council: Stephen Pointer and Jonathon Smith

Derbyshire County Council: Alison Richards and Steven Buffery

Rushcliffe: Richard Mapletoft, Leanne Ashmore

Greater Nottingham Planning Partnership Matt Gregory, John King and Karen Shaw

2 DECLARATION OF INTERESTS

Councillor M Radulovic declared he had a planning interest but was not related to the Joint Planning Advisory Board area.

3 MINUTES OF THE LAST MEETING

The minutes of the meeting held on 26 September 2023 were approved as a correct record.

4 PRESENTATION ON GREATER NOTTINGHAM STRATEGIC HOUSING MARKET ASSESSMENT

Members noted a presentation provided on the Greater Nottingham and Ashfield Housing Needs Assessment. The Housing Needs Assessment considered the size, type and tenure of housing required for different groups in the community to be reflected within planning policies. For affordable housing, the study identified the overall need and considered the appropriate tenures based on household type, income and local rents and property prices. This information would be used to inform strategic plan policies.

5 GREATER NOTTINGHAM STRATEGIC PLANNING UPDATE

The Committee noted the progress made on the Greater Nottingham Strategic Plan, Erewash Core Strategy Review and Ashfield Local Plan. The Distribution and Logistics Preferred Approach had revised the residual need

across the Nottingham Core and Outer Housing Market Area and the approach had identified the Former Bennerley Coal Disposal Area and Ratcliffe on Soar Power Station as sites that would make a considerable contribution to meeting the need. Comments had been received from statutory consultees, Parish Councils, several landowners, and residents. A full Pre Submission (Regulation 19) version for the Strategic Plan would be published prior to submission for examination.

An update was provided to Members on the Erewash Core Strategy and Ashfield Local Plan.

6 LEVELLING-UP AND REGENERATION ACT UPDATE

The Joint Planning Advisory Board noted the changes to plan making brought about by the Levelling Up and Regeneration Bill. The Government had announced that the levelling Up and Regeneration bill had now received Royal Assent on 26 October 2023. As part of the Levelling Up and Regeneration Act 2023 Local Planning Authorities would be required to have a design code in place covering their entire areas. The area wide codes would act as a framework for detailed design codes to come forward, prepare for specific areas and be led by either the Local Planning Authority, Neighbourhood Planning groups or by developers as part of planning applications. There were significant implications for Local Planning Authorities to carry out within the Act.

7 WASTE AND MINERALS LOCAL PLAN UPDATE

The Joint Planning Advisory Board noted the progress made with the Nottinghamshire/Nottingham and Derbyshire Waste and Minerals Local Plans.

The County and City Councils were preparing a single Joint Waste Local Plan to replace the Waste Core Strategy. The plan would go through independent examination and subject to modifications would be adopted by both Councils mid-2024. Work on updating the Joint Mineral and Waste Local Development Scheme was in progress for the Derbyshire/Derby Councils.

A query was raised at the meeting with the extraction of gypsum at the Ratcliffe site.

8 HOMES ENGLAND CAPACITY FUNDING PROJECTS MONITORING

Members noted the progress made on Homes England Capacity Funding Projects. Erewash Borough Council repurposing of £98,622 funding, initially secured for Stanton Regeneration site had been approved for studies in accelerating housing delivery on land south West of Kirk Hallam. The final remaining elements of the funds were Gedling Borough Council with projects still to be confirmed and Nottingham City Council to the Waterside.

9 DATE OF NEXT MEETINGS

The dates of the next meetings would be circulated separately. The dates are as follows:

- Tuesday 5 March (14:00)
- Tuesday 4 June (14:00)
- Tuesday 24 September (14:00)
- Tuesday 10 December (14:00)

10 ANY OTHER BUSINESS

There was no other business at the meeting.

Meeting:	Joint Committee on Strategic Planning and Transport
Date:	12 April 2024
From:	Joint Officer Steering Group

Future Operation of the Joint Committee on Strategic Planning and Transport

1 Summary

- 1.1 Once established, the East Midlands Combined County Authority (EMCCA) will become the Local Transport Authority, taking relevant powers from the constituent authorities. This will impact on the work of this Joint Committee, and consequently its operation requires review.

2 Background

- 2.1 The Joint Committee on Strategic Planning and Transport (JC) was established in April 1998 when Nottingham City Council became a unitary authority. The JC was subject to a Protocol (terms of reference) which has been kept under review, and amended at intervals as required. The latest version of the Protocol is attached at appendix A.
- 2.2 At the time of the establishment of the JC, there were statutory requirements to produce a Joint Structure Plan for the geographic county, to prepare Waste and Minerals Local Plans for the two authorities, and to prepare Local Transport Plans, which in the first instance was prepared as a joint Local Transport Plan. Structure Plans were replaced by Regional Plans, which were then subsequently abolished, and strategic planning became the remit of the Greater Nottingham Joint Planning Advisory Board (JPAB) in 2008. Individual Local Transport Plans were also subsequently produced.
- 2.3 Once established and following a transition period, the EMCCA will exercise functions of the constituent councils as local transport authorities in relation to how transport is planned, delivered and operated across the combined area. The EMCCA instead of the constituent councils will amongst other things:
- lead the development of an area wide Local Transport Plan to shape future local transport investment
 - co-ordinate a joint approach to highways asset management and define a key route network

- following a transition period, consolidate the public transport powers of the City and County Councils into the EMCCA for supported bus services, smart ticketing and passenger information
- 2.4 The two Councils will continue to be the Local Highway Authorities, and will also retain responsibility for delivery of local improvements. However, the EMCCA will assume responsibilities which are within the remit of this Joint Committee, including but not limited to Local Transport Plan preparation, public transport and management of main highway routes (Key Route Network).
- 2.5 The transfer of transport responsibilities mean that the operation of the JC needs to be reviewed.

JC Responsibilities

- 2.6 The JC's responsibilities are to provide advice on strategic planning and transport matters as set out at Paragraph 4 of the Protocol (Appendix A).
- 2.7 Some responsibilities will no longer be relevant as a result of the creation of the EMCCA, whilst others are primarily the responsibility of other bodies, such as the Greater Nottingham Joint Planning Advisory Board. However, core responsibilities remain.
- 2.8 Taking each responsibility in the Protocol in turn:
- (a) the coordination and alignment of Local Plans in the primary role of JPAB and both Councils are represented on this body.
 - (b) Statements of common ground (apart from mineral and waste local plans and the local plans prepared by individual LPAs) are within the remit of JPAB.
 - (c) Development Plan Documents fall within the remit of JPAB.
 - (d) Planning Contributions are the remit of each council, JPAB, or the EMCCA for transport matters.
 - (e) Liaison with statutory bodies will remain relevant where related to minerals and waste planning matters.
 - (f) D2N2 will be replaced by the EMCCA. The Local Nature Partnership may remain relevant for minerals and waste planning matters.

- (g) Minerals and waste planning matters will require ongoing governance.
- (h) Provision of infrastructure falls to the EMCCA (transport) and JPAB (social and green).
- (i) The EMCCA will prepare future Local Transport Plans.
- (j) Strategic issues arising from the Traffic Control Centre will be addressed through the Local Transport Plan, which lies with the EMCCA.
- (k) Public transport operations fall to the EMCCA.
- (l) Air quality issues are very largely the consequence of transport, and therefore relevant to the EMCCA.

2.9 Those responsibilities which are not transferring to the EMCCA, and do not fall within the remit of JPAB are statutory minerals and waste planning. The MCCA will have its own governance arrangements, whilst JPAB is a long established and mature partnership. In the interests of avoiding duplication and making best use of councillor and officer time, it is proposed the role of JC be recast to focus on minerals and waste planning where the two authorities retain a statutory role which requires close co-ordination and joint working.

2.10 There has always been a need for governance of mineral and waste planning matters which are the responsibility of both Councils but the format of the Joint Committee to date has only enabled summary updates to be provided. Other meetings have needed to be scheduled to brief the relevant Cabinet leads prior to any decisions being made. It should be noted that Derbyshire and Derby also have a Development Plans Joint Advisory Committee which meets to oversee mineral and waste planning work.

2.11 This will require a new Protocol / terms of reference to be agreed by each Council, and the frequency of meetings will also need to be agreed, most likely linked to key milestones in plan preparation rather than a regular cycle.

3 Recommendation

3.1 That Joint Cttee be recast to focus on its statutory role around minerals and waste Local Plan preparation.

3.2 That a new Protocol be prepared for agreement by both Councils.

4 Background papers referred to in compiling this report

4.1 None.

Contact Officer

Matt Gregory
Head of Planning Strategy and Geographic Information
Nottingham City Council
matt.gregory@nottinghamcity.gov.uk
0115 876 3981

Steve Pointer
Team Manager Planning Policy
Nottinghamshire County Council
stephen.pointer@nottscc.gov.uk
0115 993 9388

Appendix A

PROTOCOL FOR THE OPERATION OF A JOINT COMMITTEE ON STRATEGIC PLANNING AND TRANSPORT IN GREATER NOTTINGHAM

1. Nottinghamshire County Council and Nottingham City Council established a Joint Committee between the two Authorities to advise on strategic planning and transport matters in Greater Nottingham in April 1998.
2. This protocol agreed between the two Authorities on the establishment and operation of the Joint Committee requires a two-yearly review, to ensure it remains relevant to the needs of the Joint Committee.

Role

3. The role of the Joint Committee is to advise the County Council and City Council on strategic planning and transport matters of mutual concern which cross administrative boundaries in order to facilitate the sustainable development and growth of Greater Nottingham.

Responsibilities

4. The Joint Committee will be responsible for providing advice on strategic planning and transport matters, including advice in relation to the following:
 - (a) The preparation of coordinated and aligned Local Plans to provide a coherent and consistent planning framework across Greater Nottingham, including consideration of significant evidence base studies, such as Strategic Housing Market Assessments and Economic/Employment Land reports;
 - (b) The preparation and content of statements of common ground which seek to demonstrate effective and ongoing joint working between strategic policy making authorities
 - (c) Local Plans/Development Plan Documents and Strategies prepared by other Local Planning Authorities;
 - (d) The approach to, and use of, planning contributions arising from development in Greater Nottingham where this is of strategic importance;
 - (e) Liaison with statutory bodies;

- (f) Liaison with the D2N2 Local Enterprise Partnership and Local Nature Partnership;
 - (g) Co-ordination of planning policies for minerals and waste matters, including the Local Aggregates Assessment and a Joint Waste Local Plan ;
 - (h) The provision of infrastructure, including transport, social and green infrastructure, to support future growth, particularly where this has cross boundary implications;
 - (i) Nottinghamshire Local Transport Plan (2011 – 2026) Strategy and Implementation Plan
 - (j) Nottingham Local Transport Plan (2011 – 2026) – Strategy and Implementation Plan;
 - (k) Strategic issues arising from the management of the Traffic Control Centre;
 - (l) Strategic issues arising from public transport operations, including rail services and High Speed 2, Bus Quality Partnerships and the development of the Nottingham Express Transit;
 - (m) Strategic issues arising from air quality reviews and assessments within or impacting on Greater Nottingham.
5. To assist the Joint Committee in carrying out the responsibilities in paragraph 4 above, they shall be entitled to receive information and to comment where they deem appropriate on other relevant matters including:
- (a) Planning applications within and adjacent to Greater Nottingham subject to the statutory timetable;
 - (b) Major development proposals in areas within and surrounding Greater Nottingham;
 - (c) Significant developments in the highway and transport networks;
 - (d) Major strategic initiatives of either Authority in Greater Nottingham e.g. tackling climate change.
 - (e) Economic strategies for Greater Nottingham;

- (f) Government legislation, regulations, guidance and initiatives affecting strategic planning and transport matters.

- 6. The Joint Committee will have regard to the views and resolutions of the Greater Nottingham Joint Planning Advisory Board.

Area of Responsibility

- 7. The Joint Committee will be responsible for advising on strategic planning and transport matters across the whole area known as Greater Nottingham. Greater Nottingham is defined as the Nottingham Core Housing Market Area and Hucknall. It comprises the local authority areas of Broxtowe, Erewash, Gedling, Nottingham City and Rushcliffe, plus the Hucknall part of Ashfield and the relevant parts of Derbyshire and Nottinghamshire County Councils, however, the remit of this Committee excludes Erewash Borough in Derbyshire.

Relationship to Parent Authorities

- 8. The views of the Joint Committee will be communicated to the appropriate executive or other body or bodies of the County and City Councils as soon as possible following a resolution by the Joint Committee. Where the Joint Committee has expressed a view on particular matters that is the subject of a report to any of the parent executive bodies, the recommendation of the Joint Committee will be included in the report.

Membership

- 9. The Joint Committee will be composed of four (4) members from each authority. Member substitutes are allowed.
- 10. With the agreement of the Chair and Vice Chair, other members may be co-opted onto the Committee from time to time to assist the Joint Committee in carrying out the responsibilities in paragraphs 4 to 7 above. Such members will not have voting rights.
- 11. The appropriateness of co-opted members will be reviewed in accordance with paragraph 18.

Chair and Vice Chair

12. The Chair and Vice Chair will be appointed every two years and alternate between each Authority. The Vice Chair will always be appointed by the Authority not holding the Chair.

Frequency of Meetings

13. The Joint Committee will meet at least 4 times a year unless otherwise agreed by the Chair and Vice Chair.

Organisation and Conduct of Meetings

14. Notice of meetings, circulation of papers, conduct of business at meetings and voting arrangements will follow the Standing Orders of the Authority which holds the Chair, or such Standing Orders which may be approved by the parent Authorities. Meetings will be open to members of the public.

Officer Support

15. The secretariat of the Joint Committee will alternate every two years between the two Authorities with the Chair. The costs of operating the Joint Committee will be met by the Council providing the secretariat services. The work of the Joint Committee will be serviced by a Joint Officer Steering Group which will assist the Chair and Vice Chair in setting agendas and brief them prior to meetings. They will also be responsible for communicating the views of the Joint Committee.

Disagreement Between the two Authorities

16. Where the members of the Joint Committee cannot arrive at a view on a particular issue which enjoys the support of the majority of members, that issue should be referred back to the relevant executive bodies of the two Councils.
17. Participation in the Joint Committee will not deter either Authority from expressing a dissenting opinion on any specific issue. The right to make representations at any consultation stage in the development plan making process or at an Examination in Public will not in any way be curtailed by membership of the Joint Committee.

Review

18. The role and operation of the Joint Committee will be kept under review, with a further complete review of its responsibilities and workings to be carried out not later than two years from the adoption of this revised protocol.

Protocol V7 Agreed by Joint Committee December 2022

