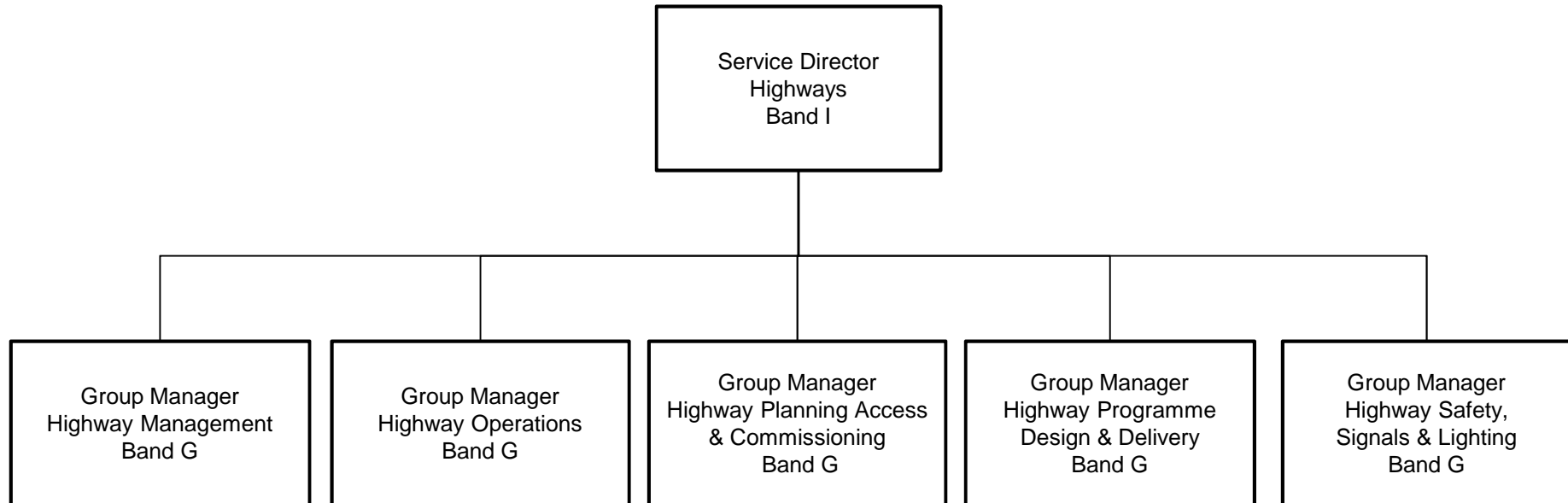


Appendix A

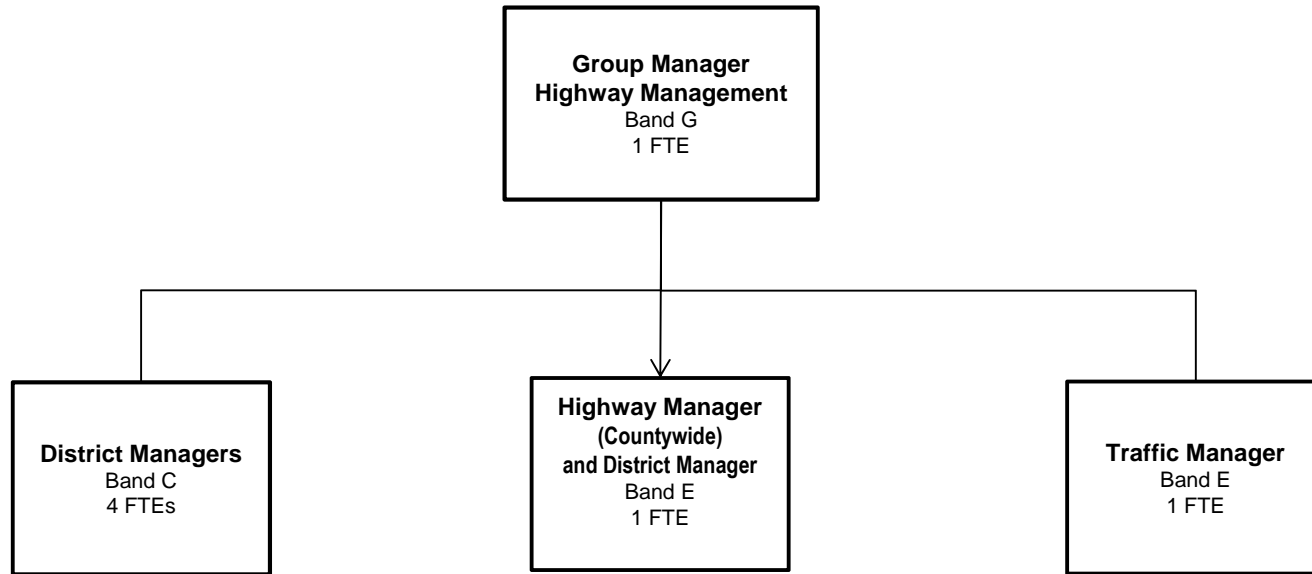
Highways Division

HIGHWAYS DIVISION

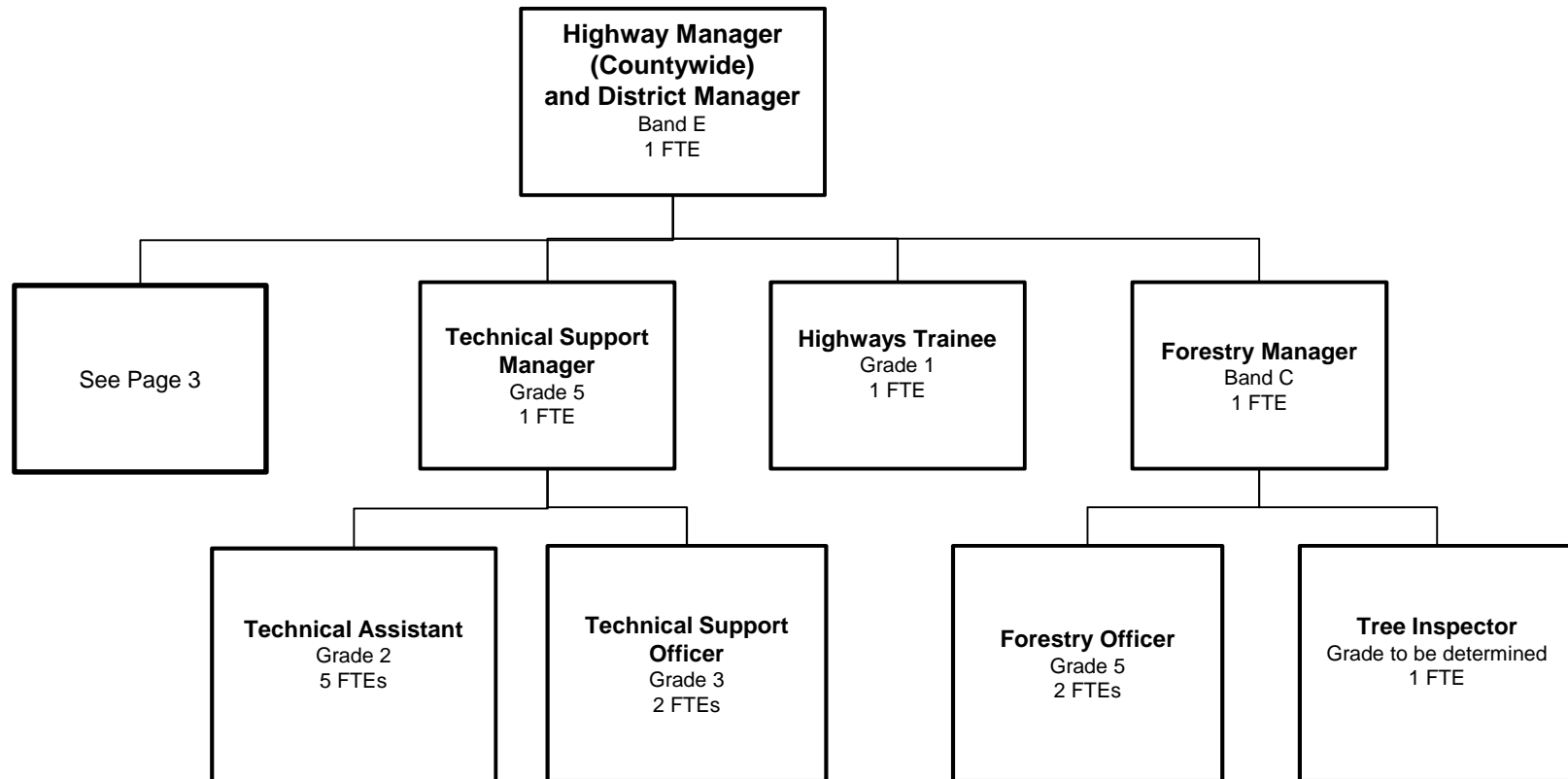
Post numbers shown are full time equivalents



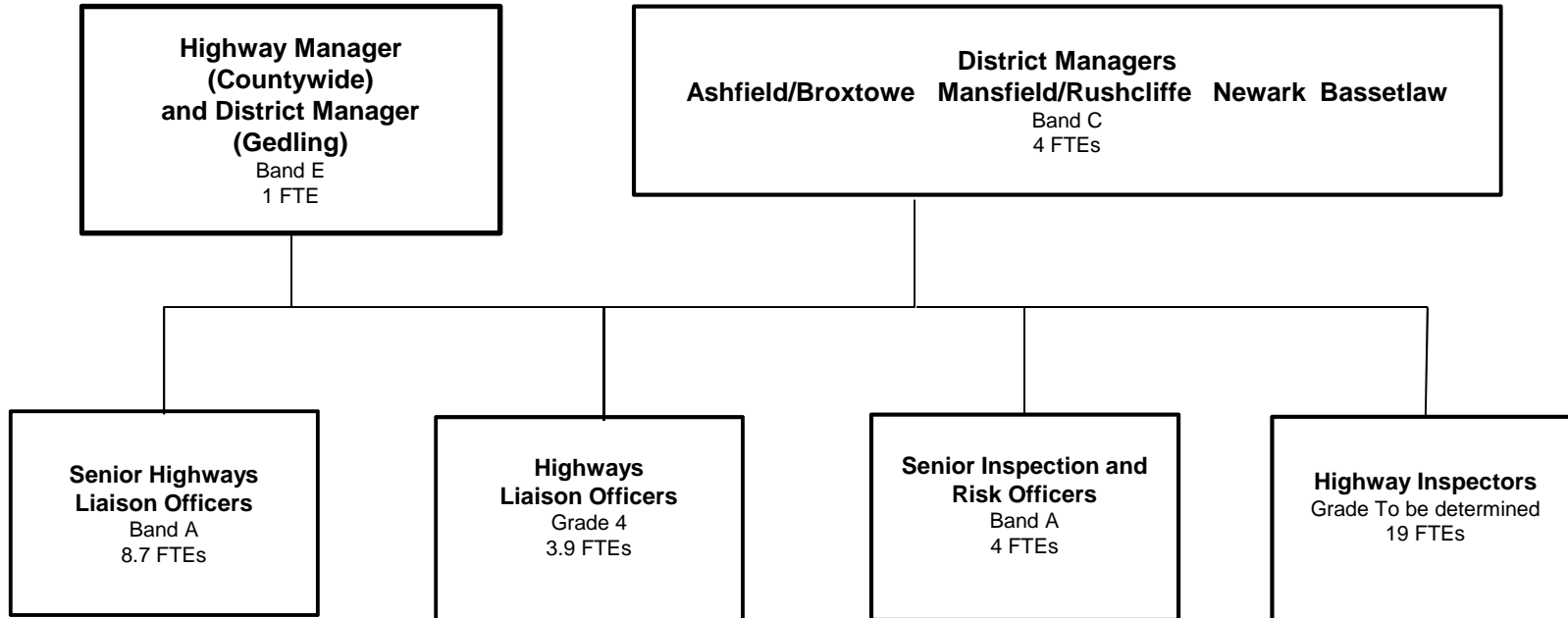
HIGHWAY MANAGEMENT



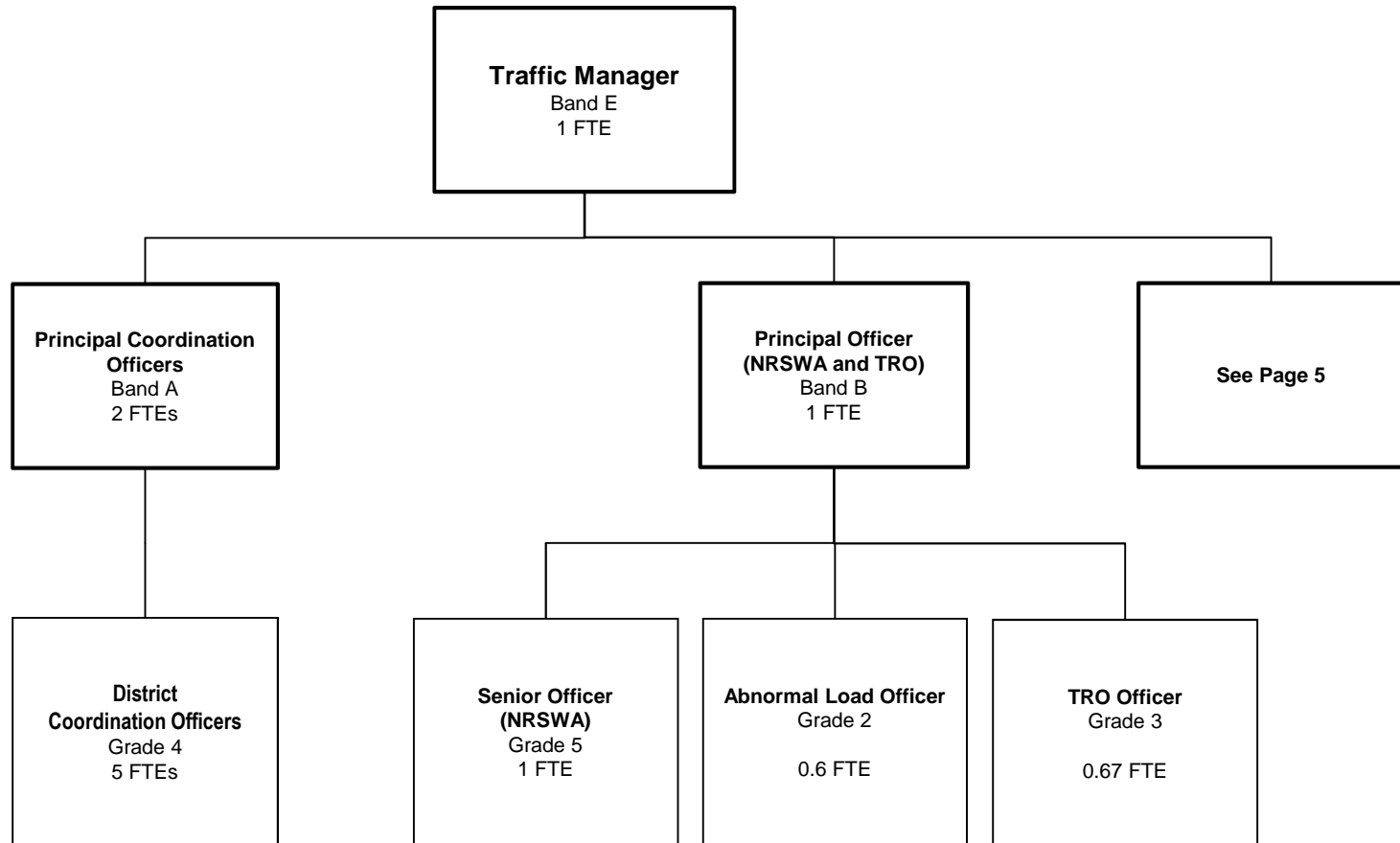
HIGHWAY MANAGER (COUNTYWIDE) AND DISTRICT MANAGER



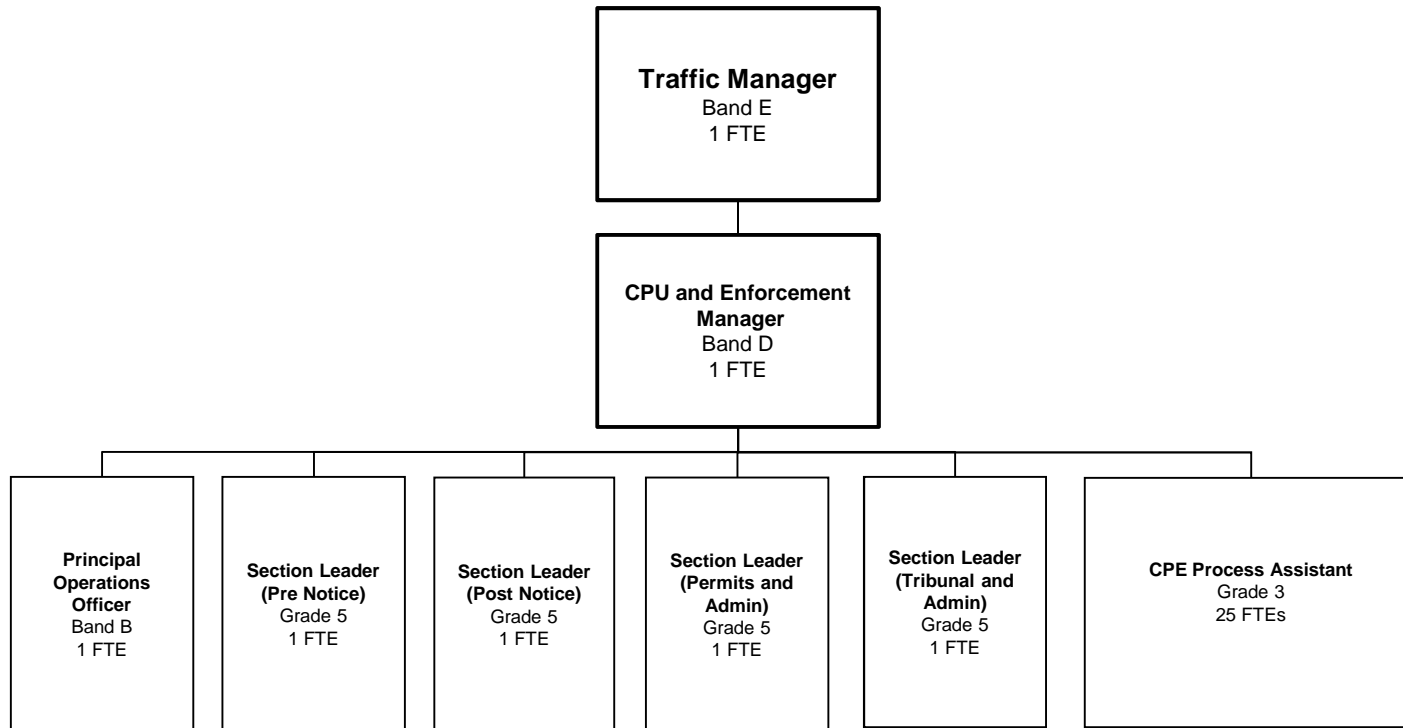
DISTRICT MANAGERS



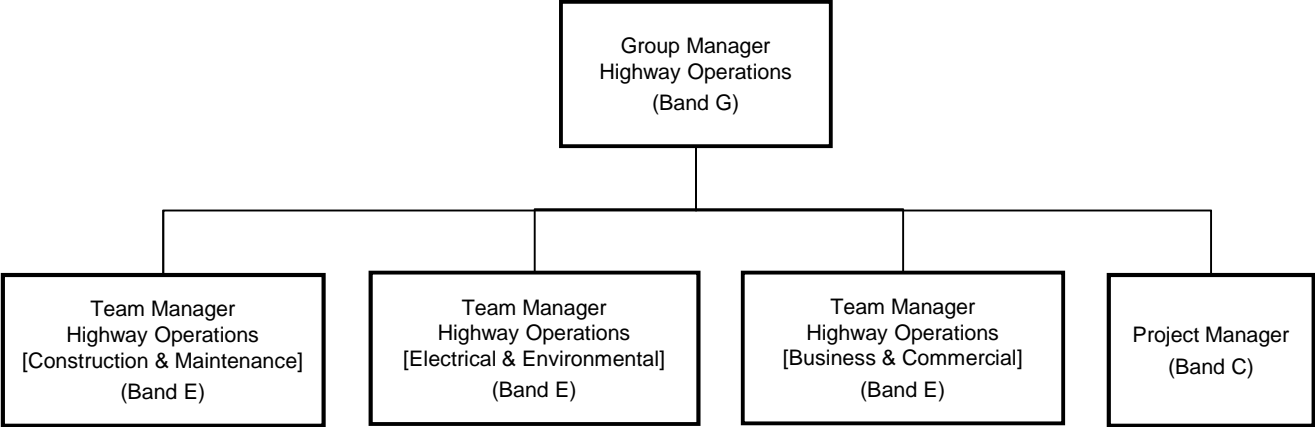
TRAFFIC MANAGER (Part 1)



TRAFFIC MANAGER (Part 2)

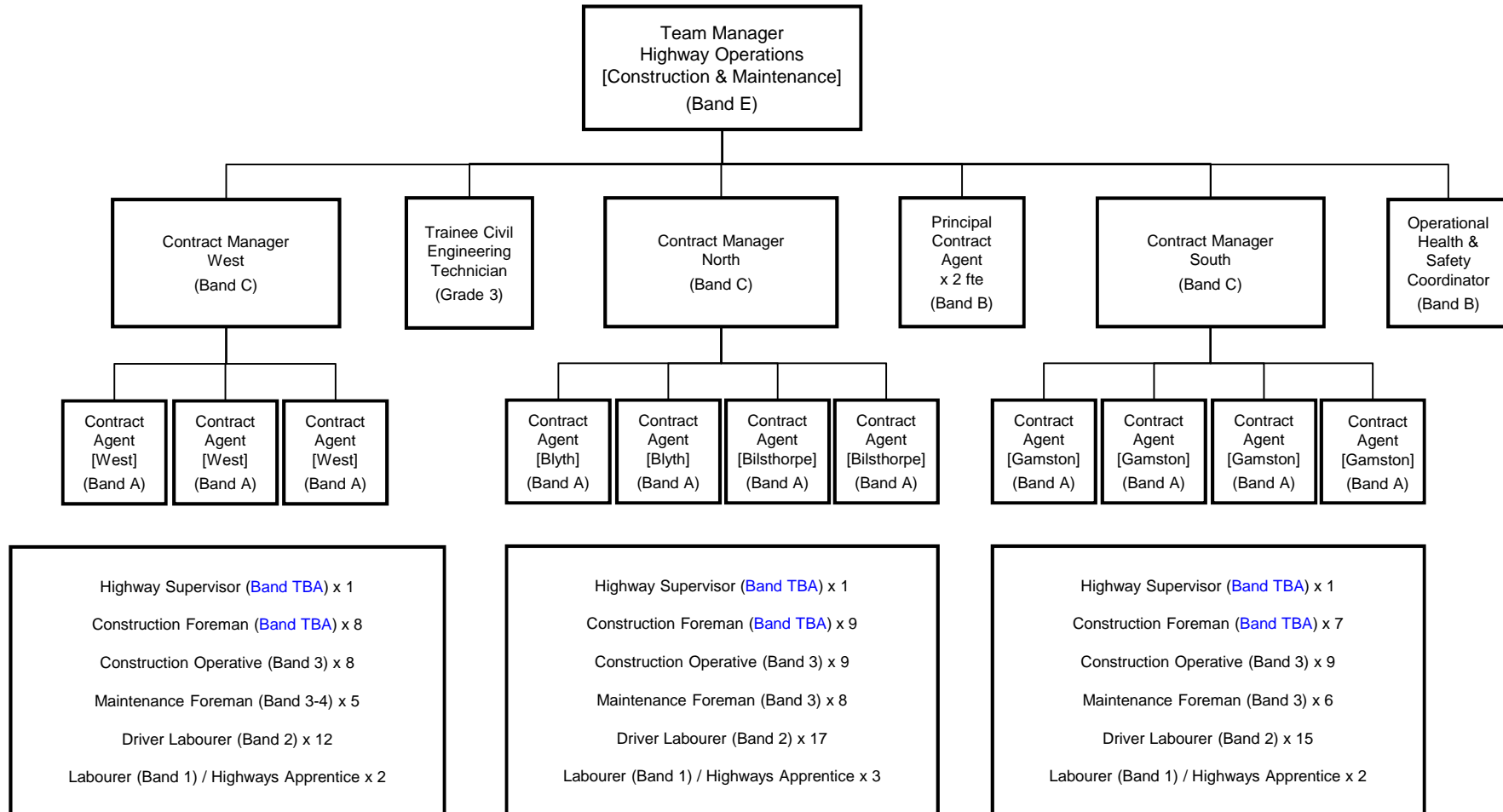


HIGHWAY OPERATIONS GROUP



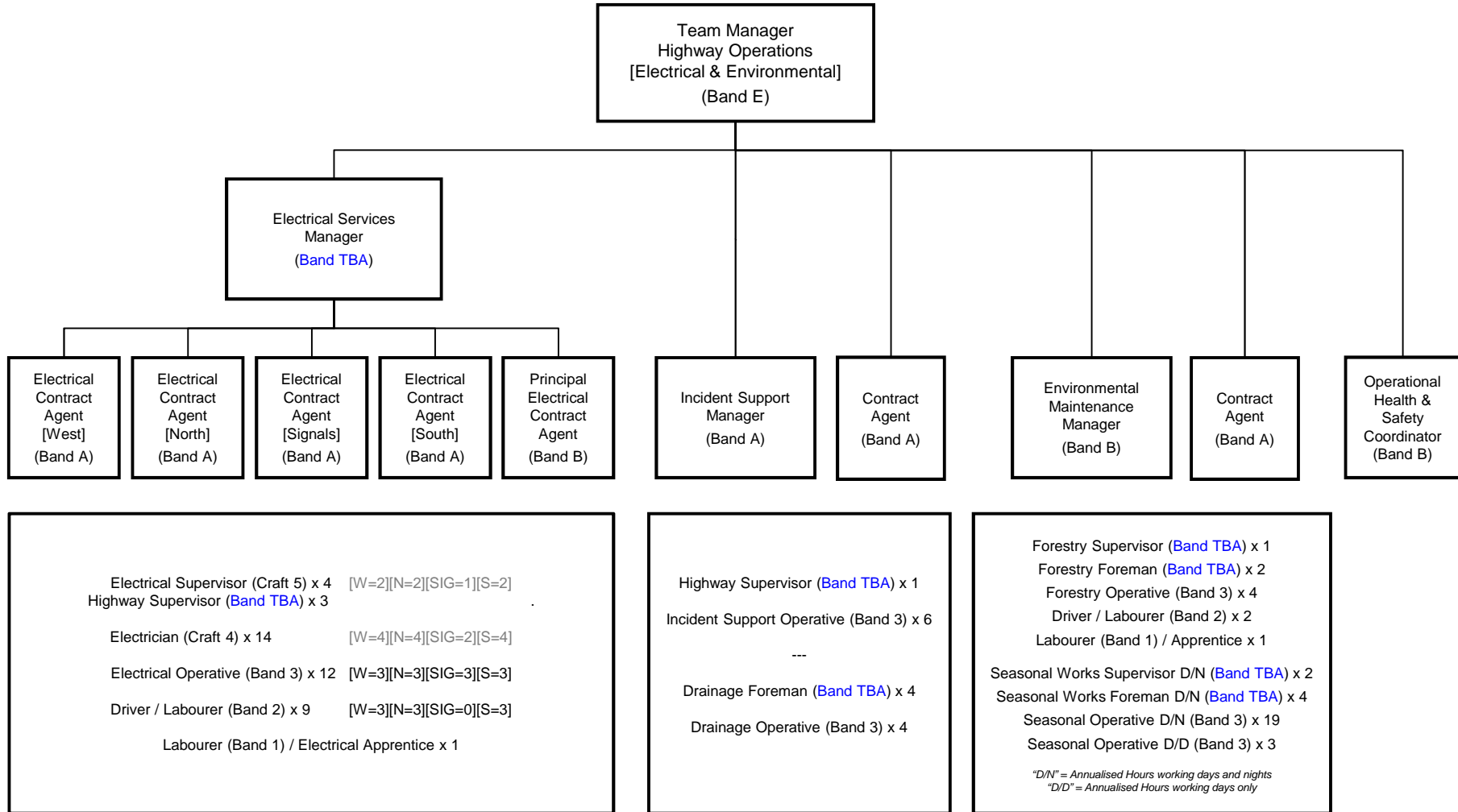
NOTE: Posts shown 'Band TBA' are still awaiting grade confirmation following the Job Evaluation process

CONSTRUCTION & MAINTENANCE



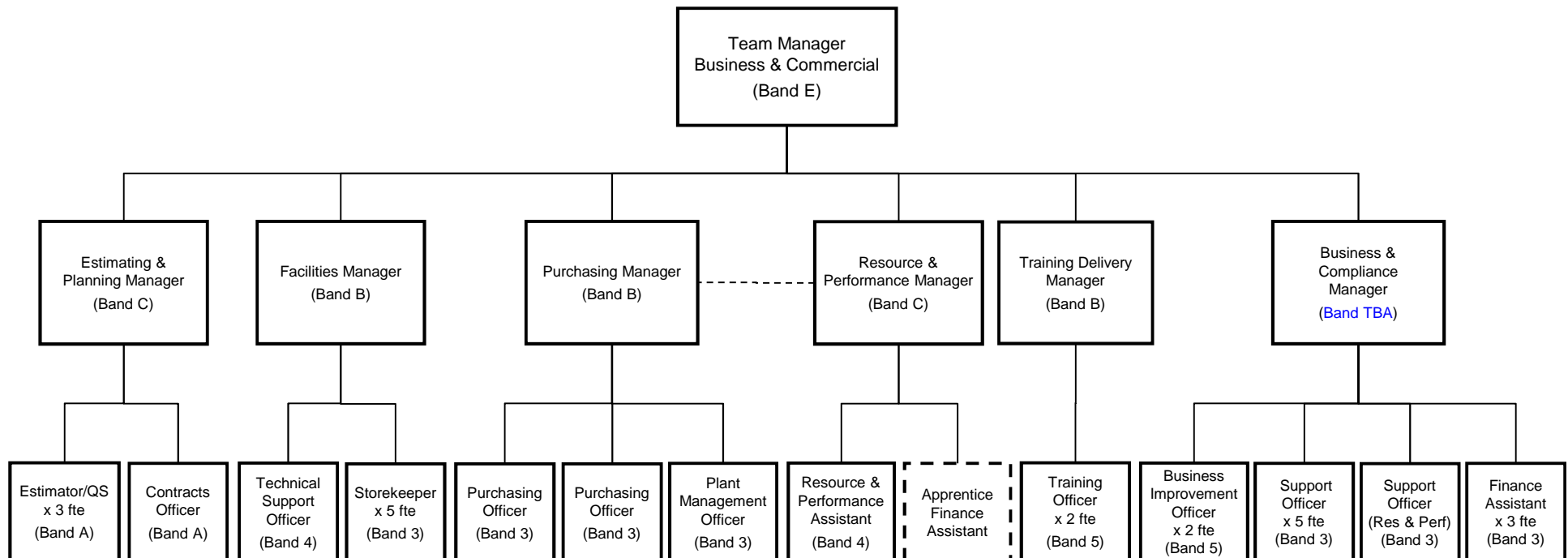
NOTE: Posts shown 'Band TBA' are still awaiting grade confirmation following the Job Evaluation process

ELECTRICAL & ENVIRONMENTAL



NOTE: Posts shown 'Band TBA' are still awaiting grade confirmation following the Job Evaluation process

BUSINESS & COMMERCIAL



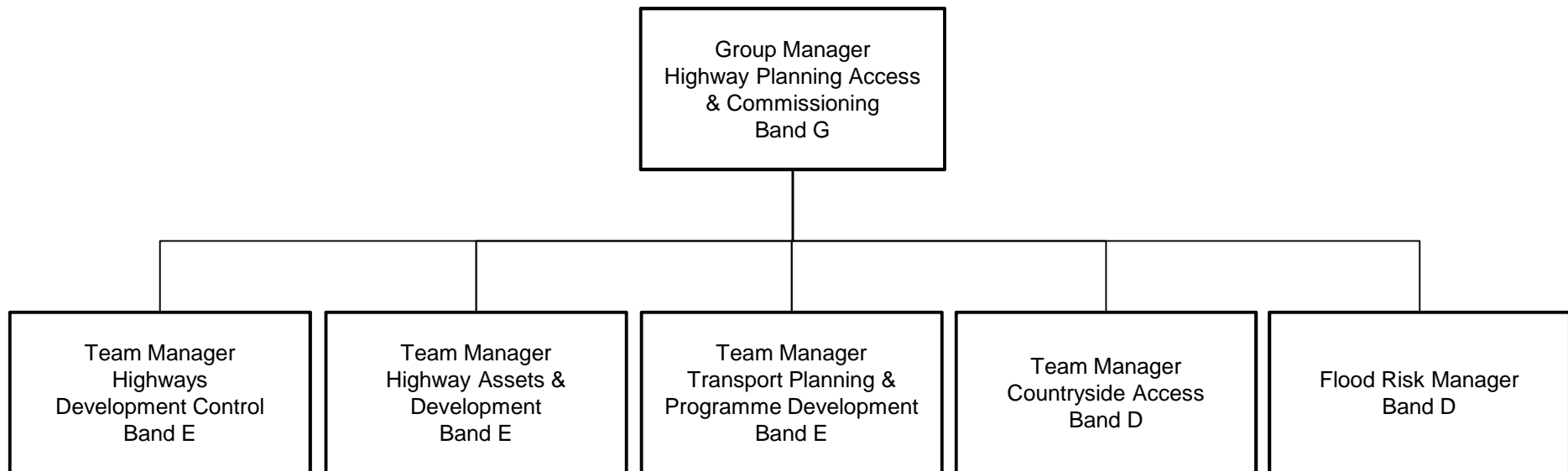
The Storekeeper posts are frontline

Apprentices are not employed by Nottinghamshire County Council

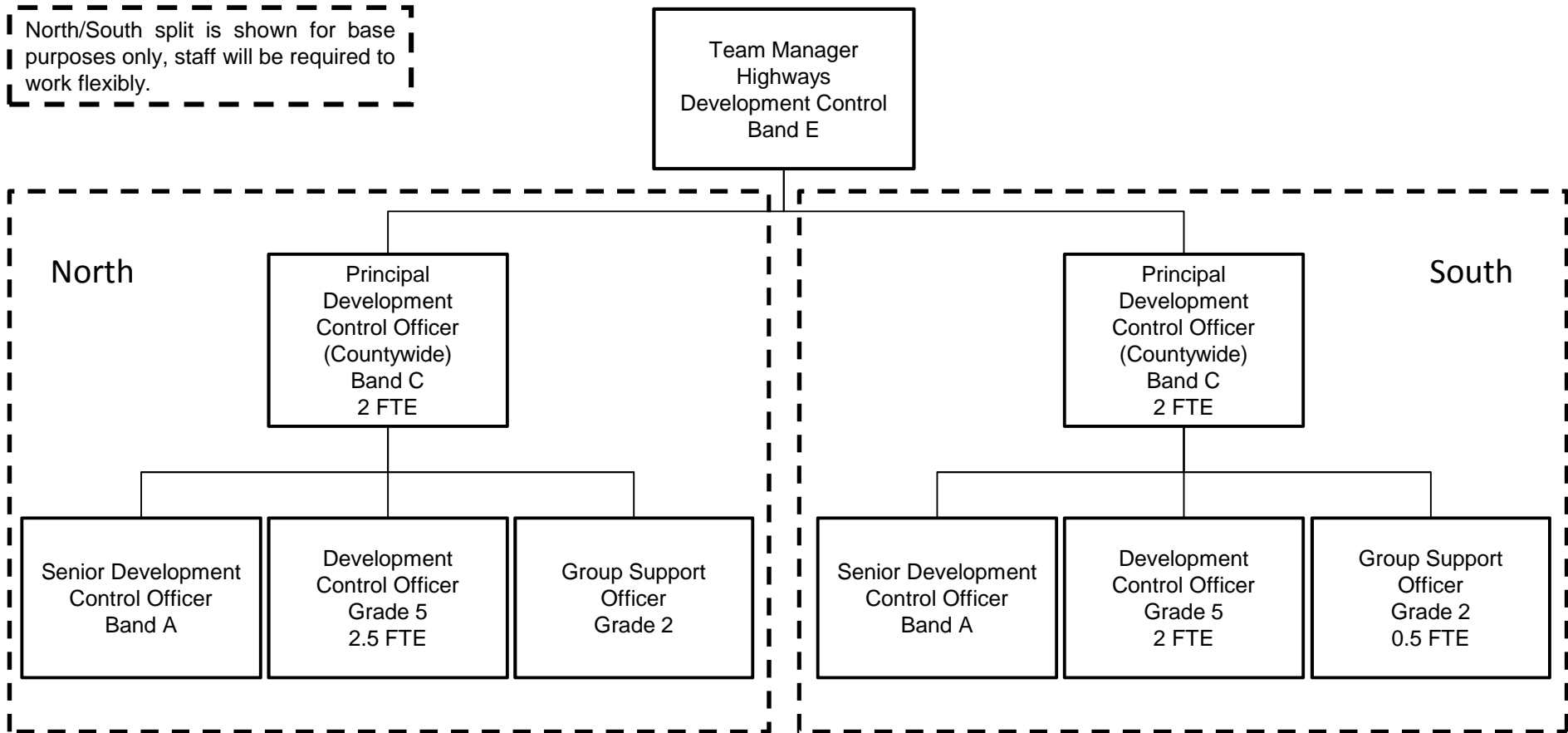
NOTE: The above Finance Assistant posts are transferring into Highway Ops Group from E&R Business Support

NOTE: Posts shown 'Band TBA' are still awaiting grade confirmation following the Job Evaluation process.

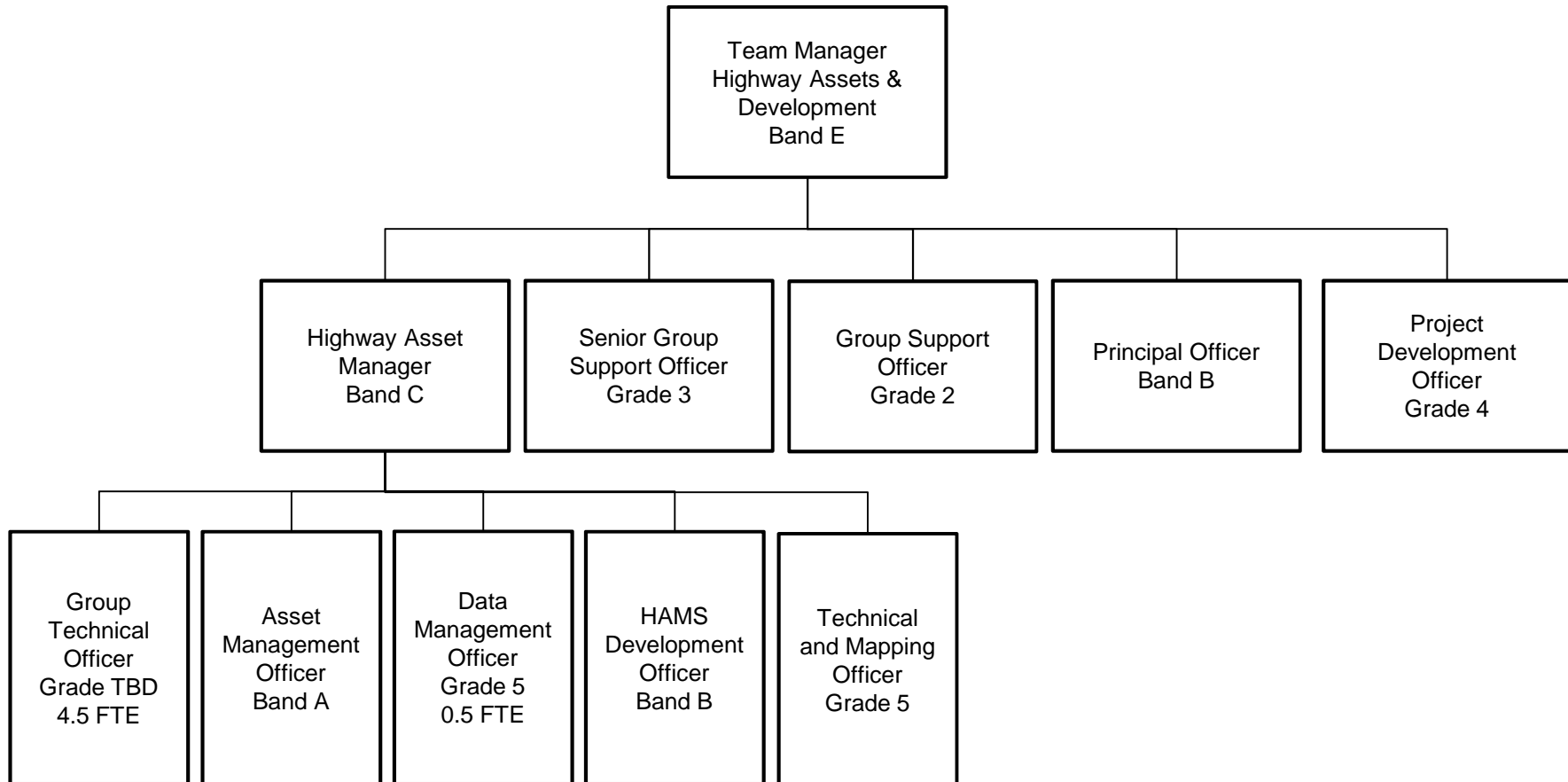
HIGHWAY PLANNING ACCESS & COMMISSIONING



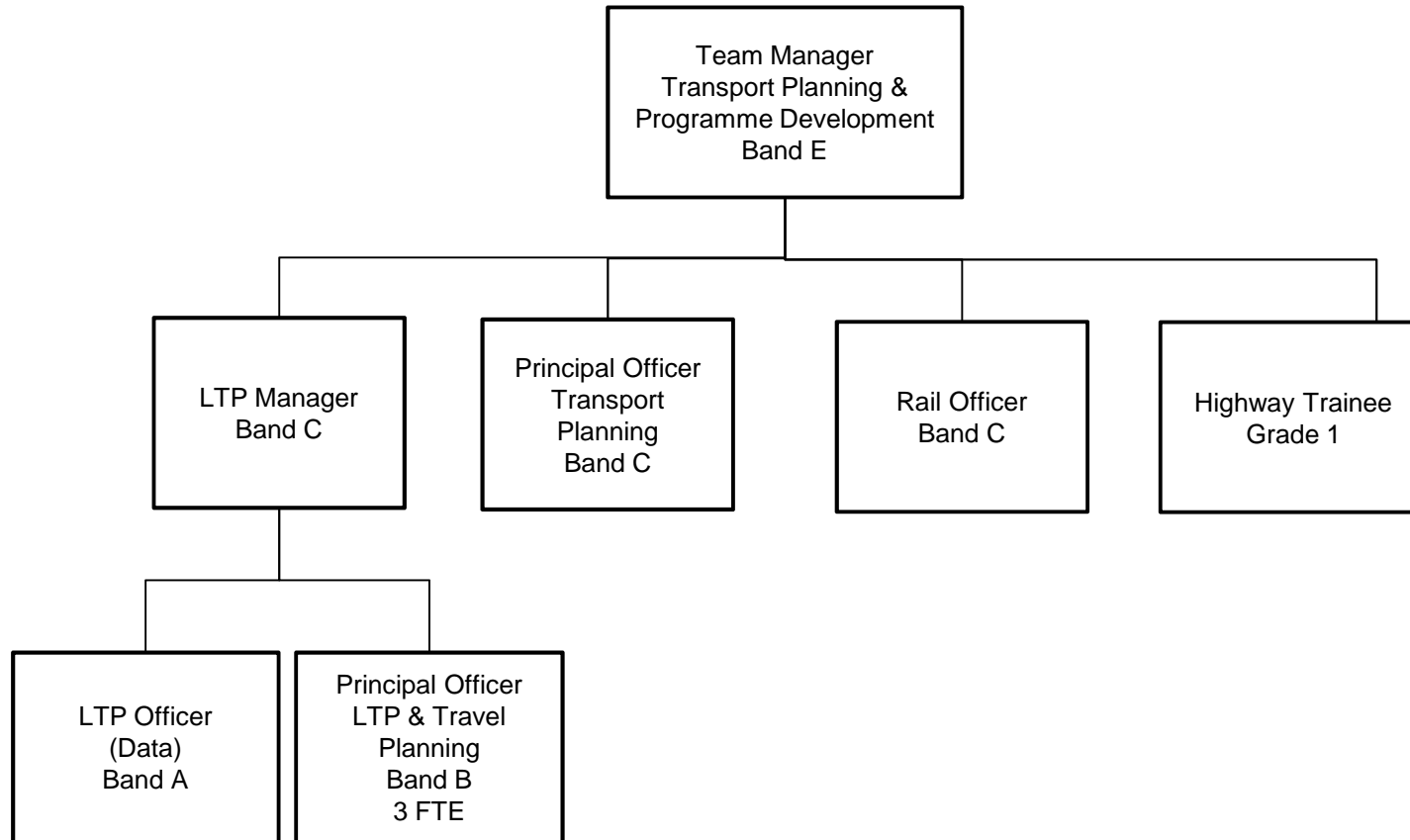
HIGHWAYS DEVELOPMENT CONTROL



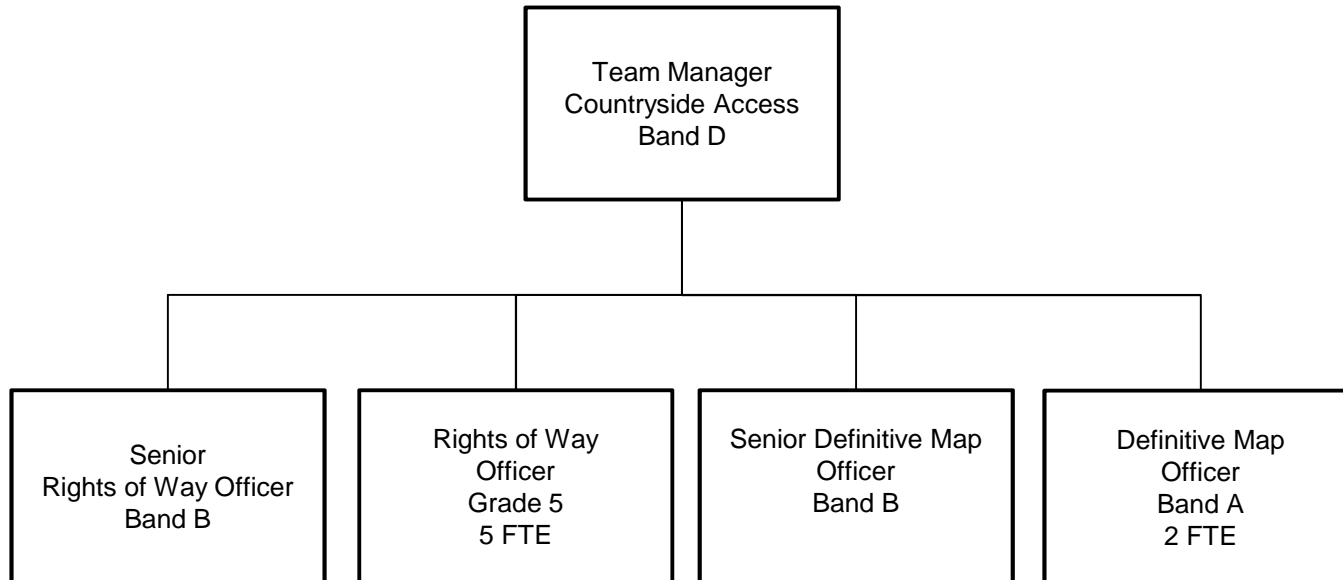
HIGHWAY ASSETS & DEVELOPMENT



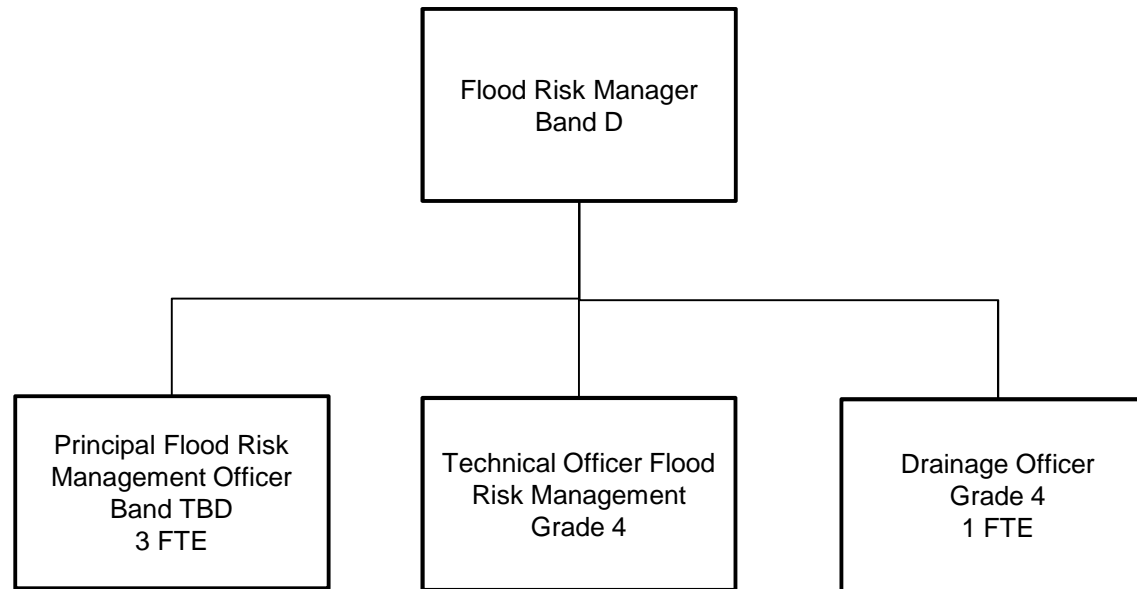
TRANSPORT PLANNING & PROGRAMME DEVELOPMENT



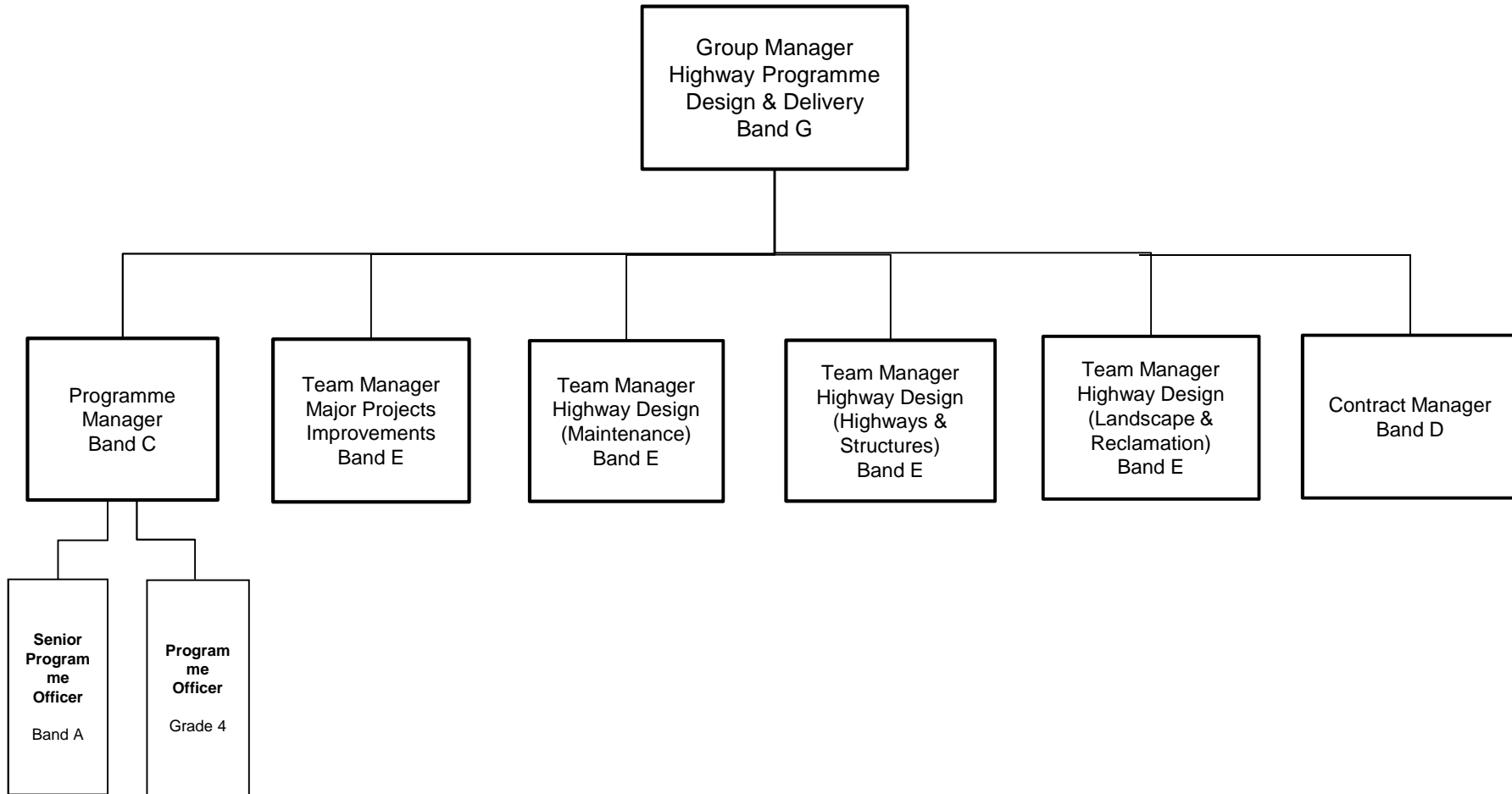
COUNTRYSIDE ACCESS



FLOOD RISK MANAGEMENT

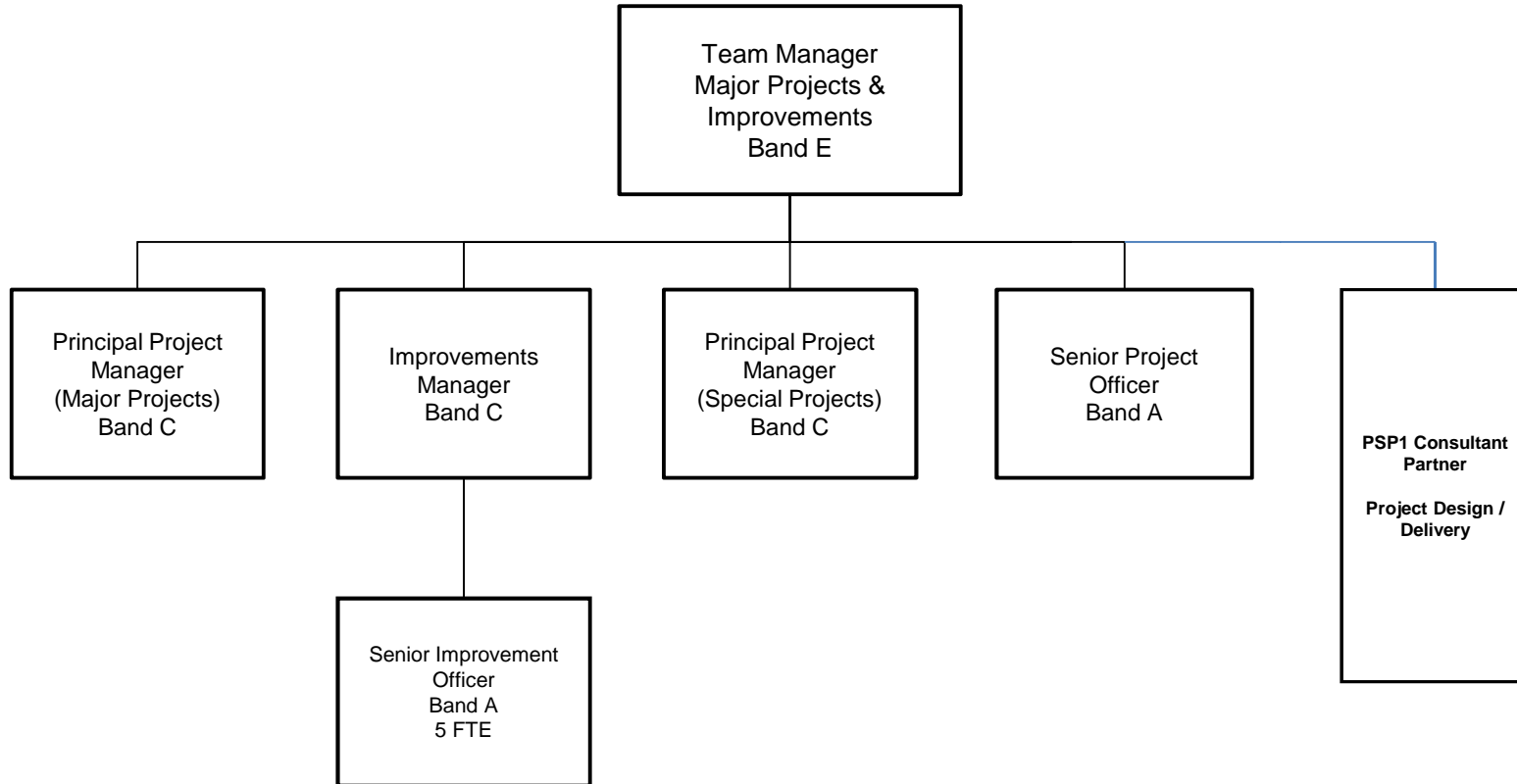


HIGHWAY PROGRAMME DESIGN & DELIVERY



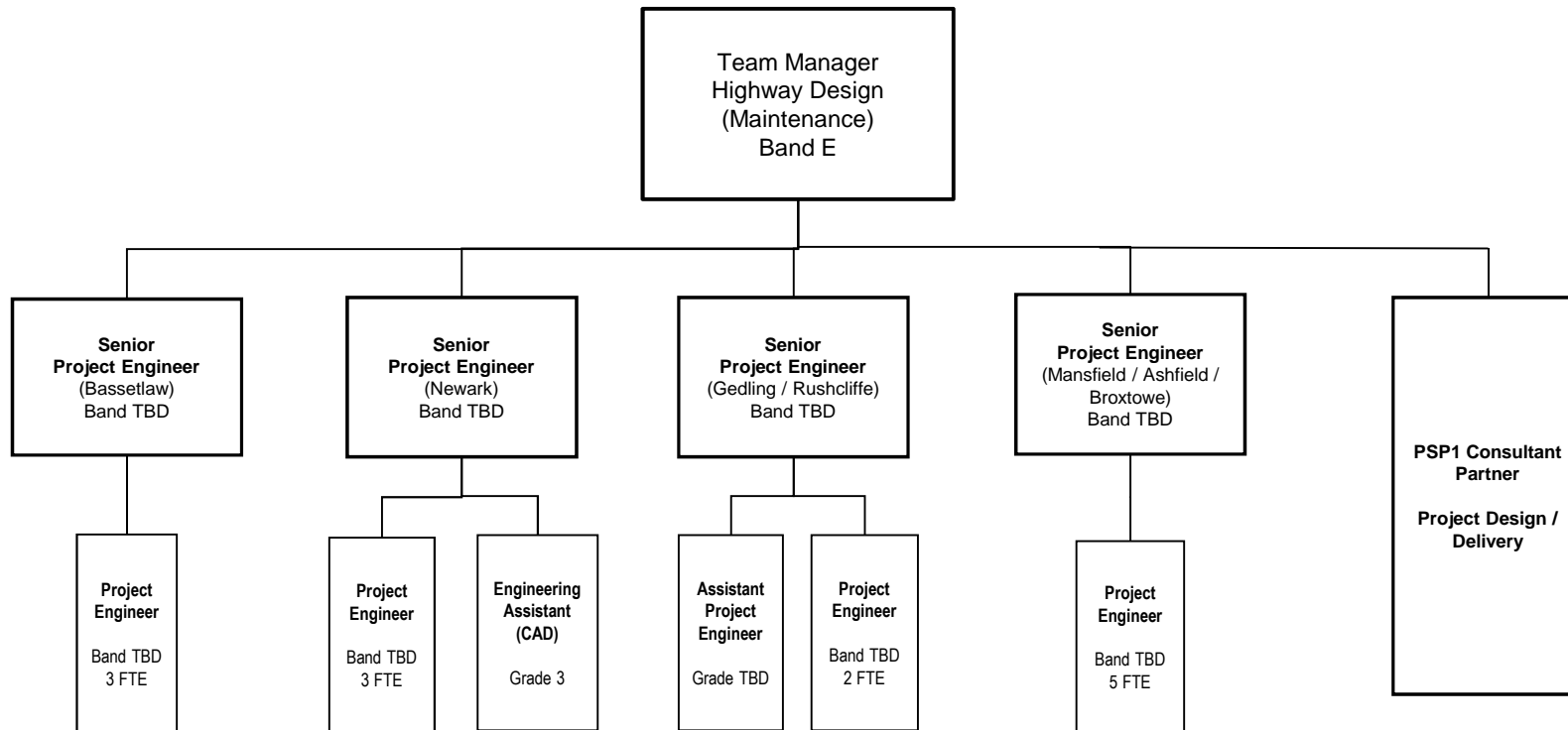
MAJOR PROJECTS & IMPROVEMENTS

Post numbers shown are
full time equivalents



HIGHWAY DESIGN (MAINTENANCE)

Post numbers shown are
full time equivalents



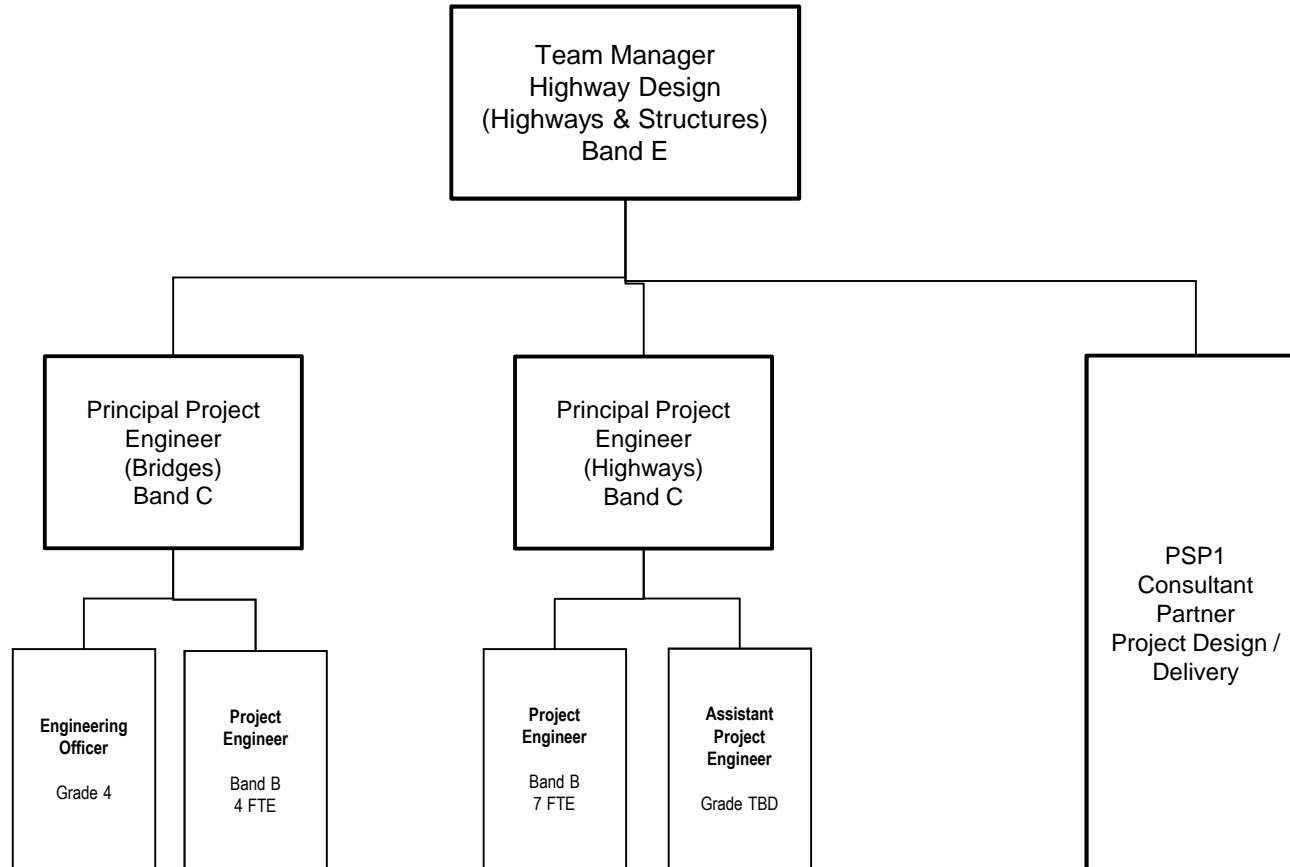
Notes:

Although based on Districts, post will need to be flexible to cover all work across the County

Assistant Project Engineer posts will work across all Teams / Areas and between Groups to maximise training opportunities and experience.

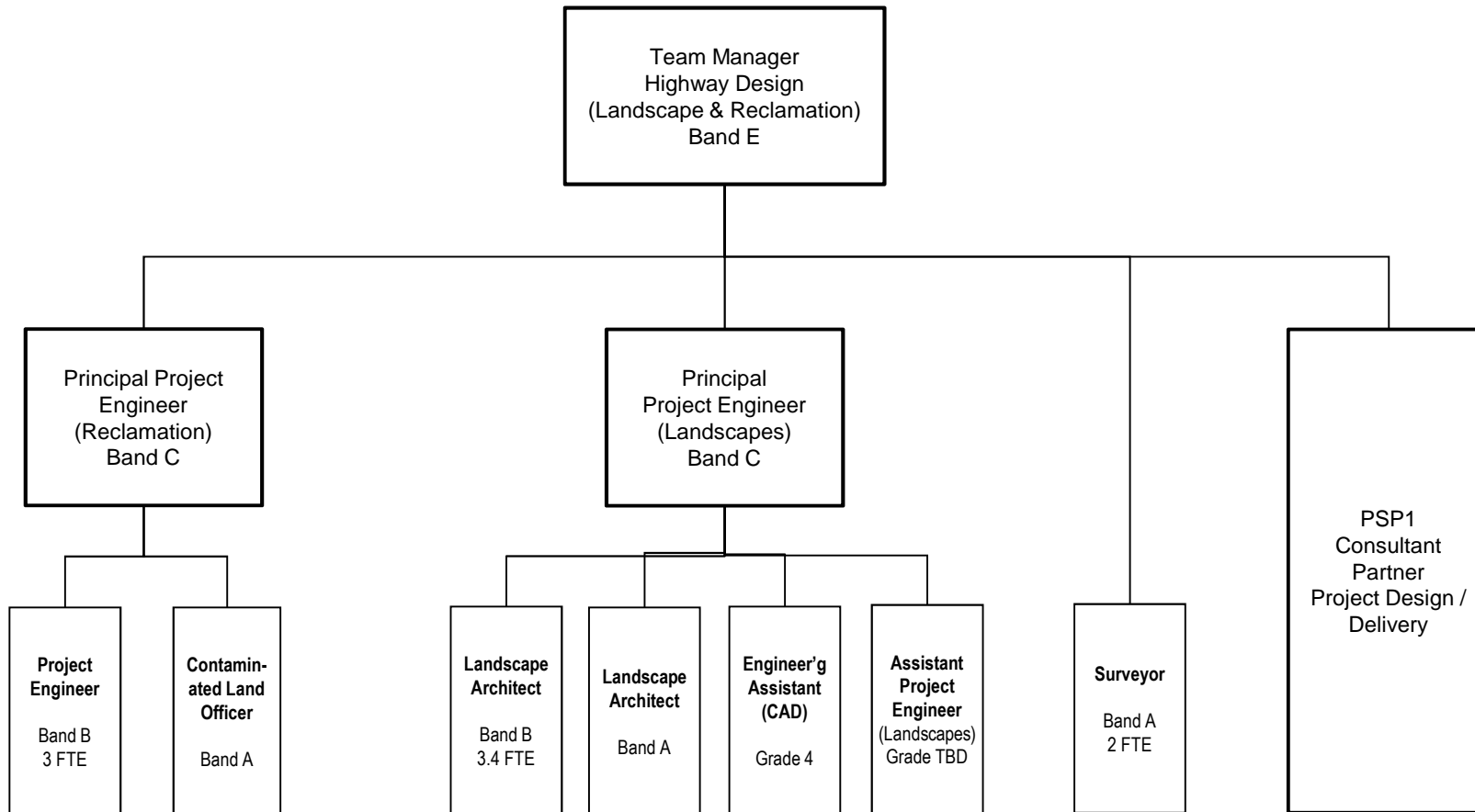
HIGHWAY DESIGN (HIGHWAY & STRUCTURES)

Post numbers shown are
full time equivalents



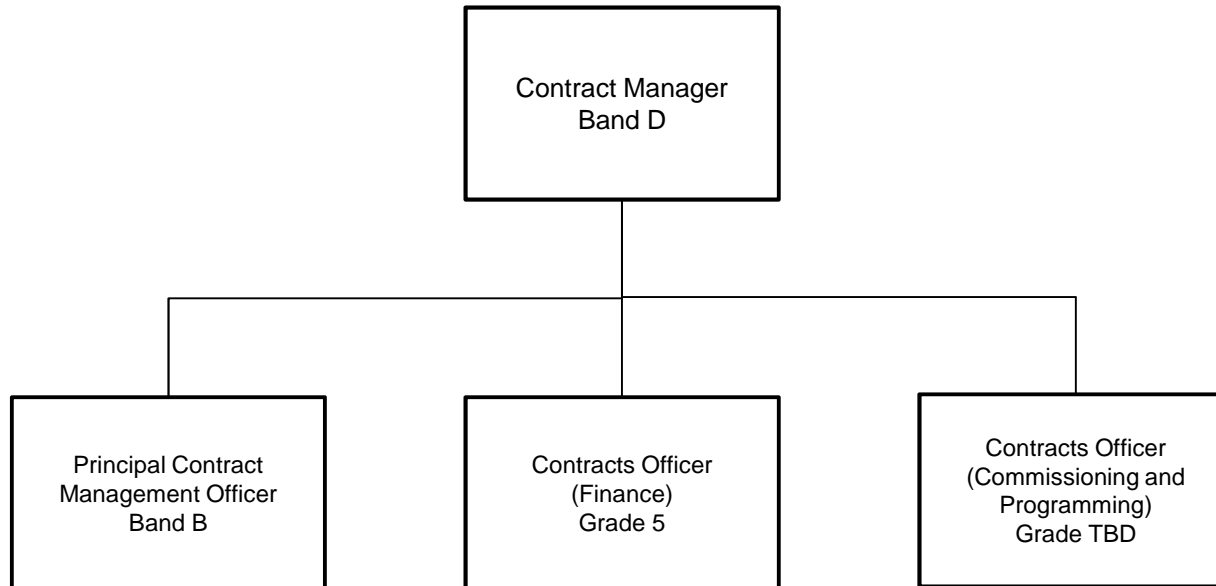
HIGHWAY DESIGN (LANDSCAPE & RECLAMATION)

Post numbers shown are
full time equivalents

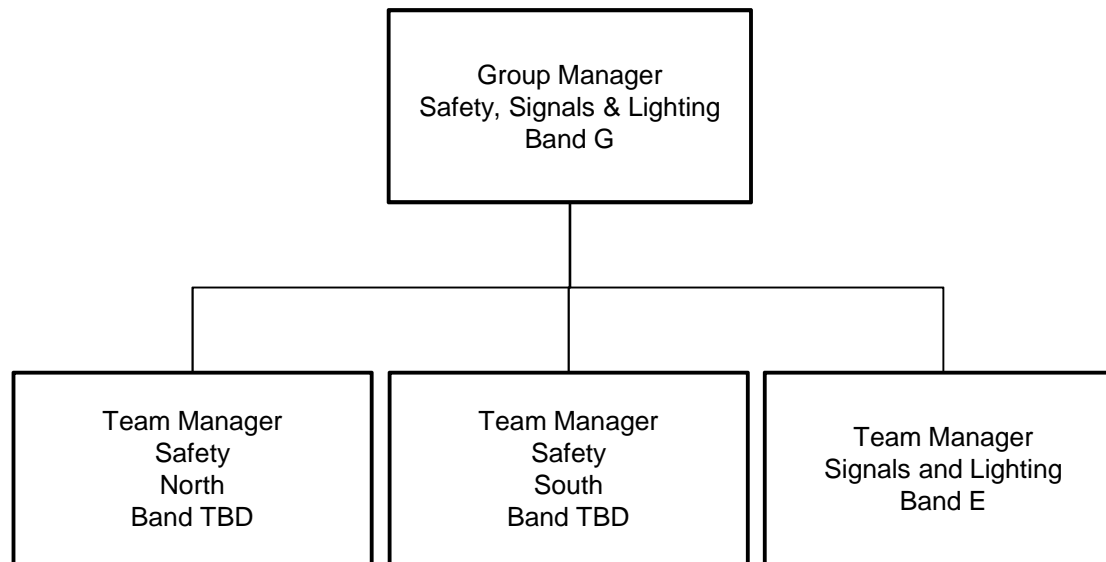


CONTRACT MANAGER

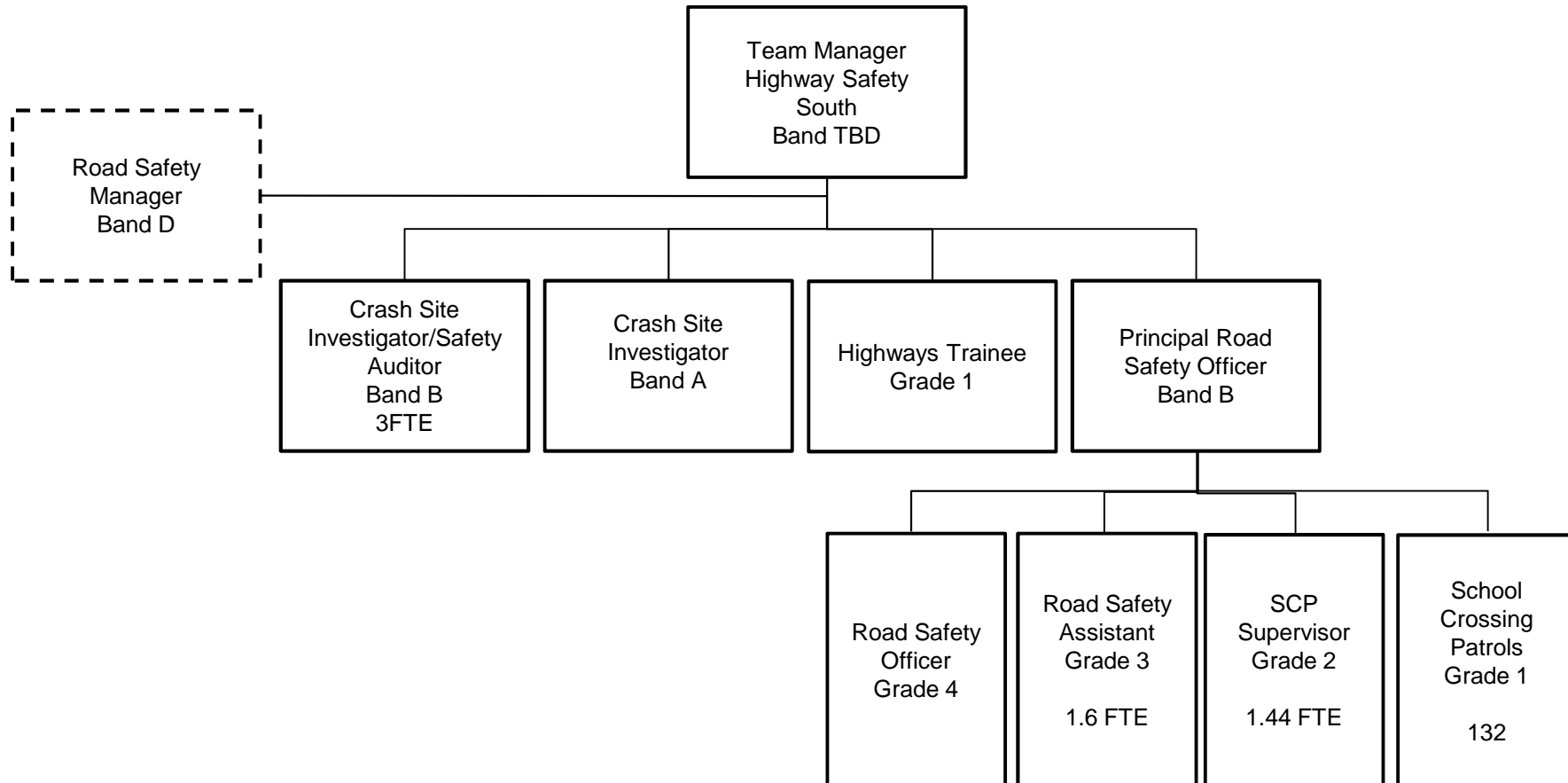
Post numbers shown are
full time equivalents



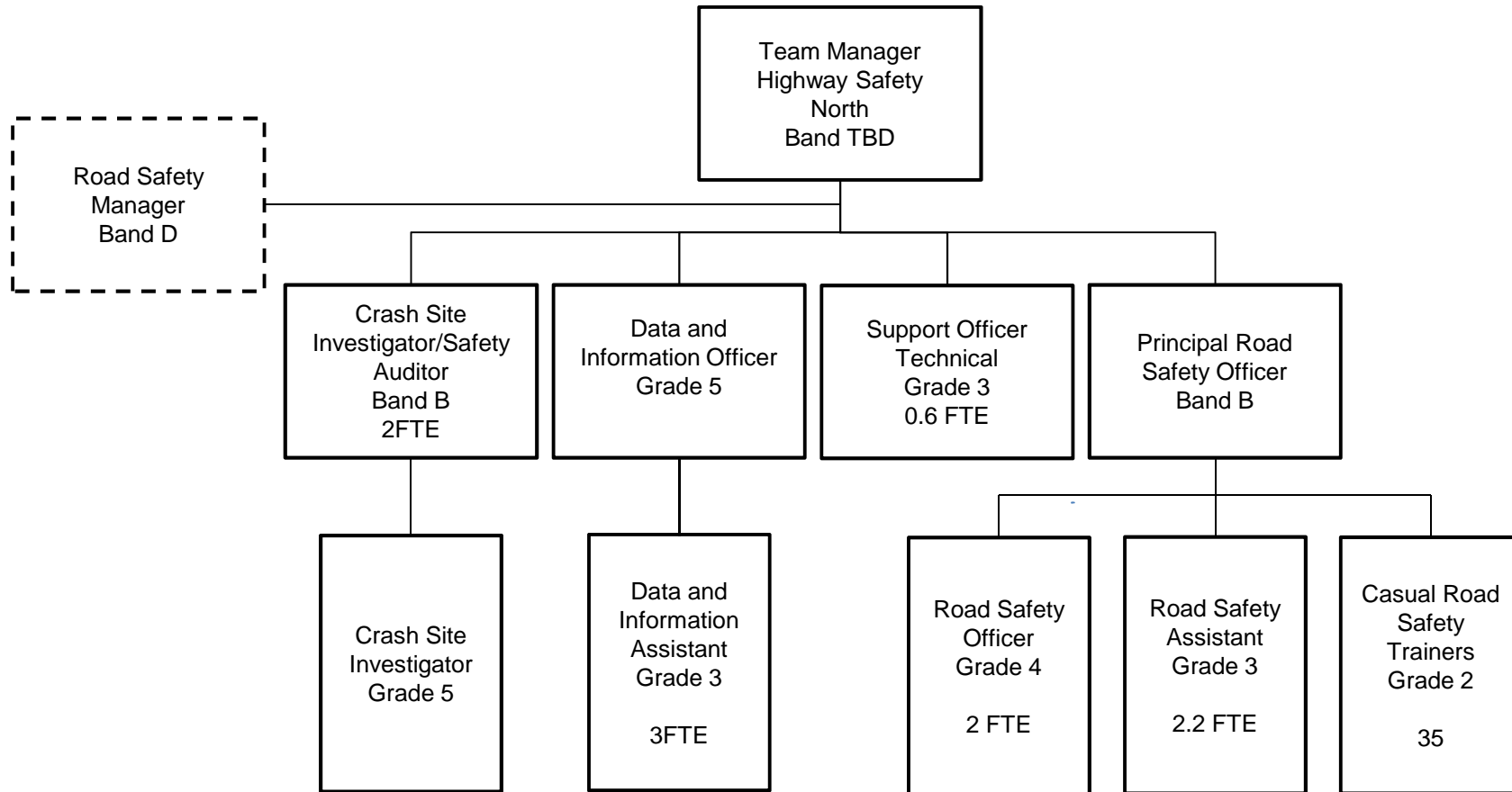
HIGHWAY SAFETY, SIGNALS & LIGHTING



HIGHWAY SAFETY - SOUTH



HIGHWAY SAFETY - NORTH



SIGNALS AND LIGHTING

