

16 November 2015

Agenda Item: 6

## **REPORT OF THE SERVICE DIRECTOR, YOUTH, FAMILIES AND CULTURE**

### **THE TROUBLED FAMILIES PROGRAMME IN NOTTINGHAMSHIRE**

#### **Purpose of the Report**

1. This report provides further information for noting on the conclusion of the first phase and the development of the Government's Troubled Families Programme in Nottinghamshire.

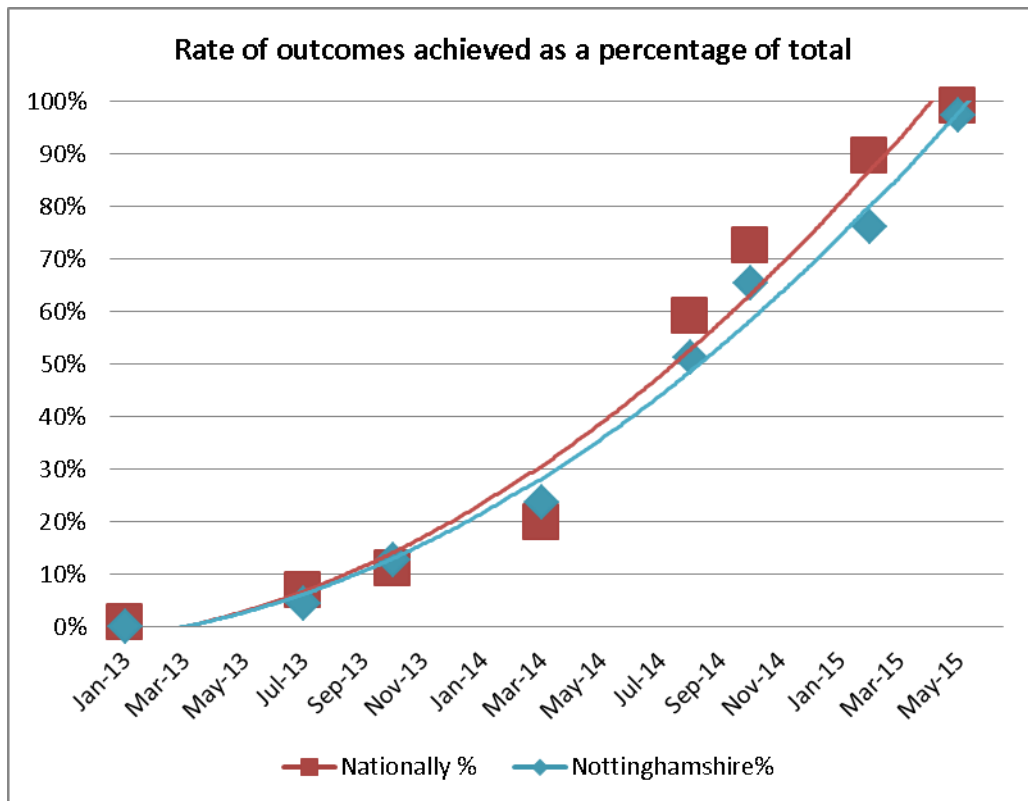
#### **Information and Advice**

##### **Background**

2. For the first phase of the Troubled Families Programme, Nottinghamshire committed to 'turning around' 1,580 families affected by poor school attendance, youth crime, anti-social behaviour and unemployment. In Nottinghamshire the approach to delivering the programme has been known as "Supporting Families".
3. The next phase of the programme, which will last until 2020, will retain the first programme's focus on families with complex problems and will continue to include families affected by poor school attendance, youth crime, anti-social behaviour and unemployment. However, it will also reach out to families with a broader range of problems who are the highest cost to the public purse. These will be families with multiple problems who are most likely to benefit from an integrated, whole family approach.

##### **Progress to date**

4. During "phase one" 2,450 families were actively worked with and the required 1,580 families achieved the positive outcomes needed and full Payment By Results payments claimed. An initial cost benefit analysis of the work carried out with the 2012-13 cohort produced a conservative estimate that for every pound spent, there are savings of about two pounds to the public purse. A full breakdown of these savings is contained in the full end of phase one report attached as **Appendix 1**. Many of those families who had not met the outcomes required by the end of the first phase can move into the extended programme.
5. The graph overleaf illustrates the rate of outcomes for Nottinghamshire over the first phase of the programme. This shows a slightly delayed start but with overall good results achieved.



6. Throughout the first phase of the programme partnership working was a vital feature of the service provided, particularly the District Councils who worked closely with us to achieve outcomes and several of whom provided free office accommodation for our staff.
7. The contribution of the Department of Work and Pensions secondees who, working with our staff, achieved positive outcomes for many who had been away from the labour market for a significant amount of time should also be noted. These staff were also instrumental in ensuring that families received correct benefits and helped avoid periods of suspension for some claimants.
8. The Family Service will be established from 1 November 2015; staff from Supporting Families and Targeted Support are already working with families as part of the extended programme – some are referrals from the Early Help Unit or the Youth Justice Service and others are families highlighted from a number of data sources.
9. The programme is able to access a number of useful pieces of information to identify suitable families and the Local Authority's Strategic Analytical Unit uses this data to provide us with a prioritised list of families for the service to approach and offer a service. We are working with partners to increase the range and quality of data available to identify those families most in need.
10. As part of the evaluation of this expanded programme, Nottinghamshire will be taking part in a Family Survey being carried out by Ipsos Mori. It is expected that this research will give valuable qualitative information about the service our Family Service offers and the outcomes achieved.

## **Other Options Considered**

11. The report is for noting only.

## **Reason/s for Recommendation/s**

12. This report is for noting only.

## **Statutory and Policy Implications**

13. This report has been compiled after consideration of implications in respect of crime and disorder, finance, human resources, human rights, the public sector equality duty, safeguarding of children and vulnerable adults, service users, sustainability and the environment and ways of working and where such implications are material they are described below. Appropriate consultation has been undertaken and advice sought on these issues as required.

## **Financial Implications**

14. There are no financial implications arising from this report.

## **RECOMMENDATION**

- 1) That the conclusion of the first phase and development of the Troubled Families Programme in Nottinghamshire is noted.

**Derek Higton**  
**Service Director, Youth, Families and Culture**

**For any enquiries about this report please contact:**

Laurence Jones  
Group Manager, Targeted Support and Youth Justice Service  
T: 01623 520109  
E: [laurence.jones@nottscc.gov.uk](mailto:laurence.jones@nottscc.gov.uk)

## **Constitutional Comments**

15. As this report is for noting only, no Constitutional Comments are required.

## **Financial Comments (SS 02/11/15)**

16. There are no financial implications arising directly from this report.

## **Background Papers and Published Documents**

Except for previously published documents, which will be available elsewhere, the documents listed here will be available for inspection in accordance with Section 100D of the Local Government Act 1972.

The Troubled Families Programme in Nottinghamshire – update – report to Children & Young People's Committee on 12 January 2015

Changes to Early Help staffing structures – report to Children & Young People's Committee on 9 March 2015

**Electoral Division(s) and Member(s) Affected**

All.

C0717