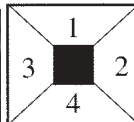


INTRODUCTION



A wide range of wastes are produced in Nottinghamshire every year. Examples shown above comprise (1) construction and demolition waste, (2) pulverised fuel ash from coal fired power stations (shown here infilling sand and gravel lagoons), (3) household waste and (4) scrap vehicles.

THE NEED FOR A WASTE LOCAL PLAN

- 1.1 The United Kingdom, like other modern industrial economies, produces large quantities of waste. An estimated 435 million tonnes of solid waste are generated in the UK each year. This mainly comprises construction, industrial, mining and quarrying and agricultural wastes. Households are responsible for around 20 million tonnes, equivalent to one tonne of waste per household. A more detailed breakdown of national waste arisings is given in Table 1.1.
- 1.2 Most of this waste is taken directly for disposal as this often represents the cheapest option due to the availability of sites with relatively few constraints. This has generally discouraged re-use, recycling and treatment initiatives. Additionally, markets for re-used and recycled waste materials are often uneconomic or poorly developed.

Sector	Annual arisings (million tonnes)	% of total arising
Households	20	5
Commercial Waste	15	3
Construction and Demolition	70	16
Other Industrial Waste	70	16
Sewage Sludge	35	8
Dredged Spoils	35	8
Mining and Quarrying Waste	110	25
Agricultural Waste	80	18
TOTAL ALL WASTE	435	100

Source: Making Waste Work - A Waste Strategy for England & Wales (DoE 1995)

- 1.3 However, recent environmental controls¹ have placed greater restrictions on the location of acceptable sites which will be able to meet future disposal requirements. In addition, volumes of some types of waste have grown rapidly in recent decades. This includes non-degradable products, such as plastics, and harmful chemicals, which can contaminate land. The need for a planned and more sustainable approach to waste management is becoming ever more urgent.

¹ The Environmental Protection Act, 1990.

- 1.4 One of the most important objectives of this plan is to promote a strategy which helps reduce the dependency on disposal as a waste management option. However, such a strategy is unlikely to secure fundamental changes in the short to medium term, and large quantities of waste will still require disposal during the Plan period. A parallel objective is to ensure a reasonable balance is struck between meeting the demand for new waste management sites and the need to protect and enhance the environment. The Waste Local Plan process also provides an opportunity for public consultation. Chapter 2 sets out the Plan's Strategy in more detail.

Sector	Landfill %	Incineration %	Recycled/ Reused	Other %
Household	90	5	5	0
Commercial	85	7.5	7.5	0
Construction and Demolition	63	0	30	7
Other Industrial	73	1	18	6
TOTAL - ABOVE SECTORS	70	2	21	7

Source: Making Waste Work - A Waste Strategy for England & Wales (DoE 1995)

ROLE OF PLAN IN DETERMINING PLANNING APPLICATIONS

- 1.5 The Waste Local Plan will therefore represent the primary guidance, and the starting point for the assessment and determination of waste management planning applications. The policies in the Plan are, however, not prescriptive and other material considerations, if there are any, must also be taken into account. Material considerations may, for example, include future changes in Government guidance, or exceptional circumstances which individual policies in the Plan could not reasonably have allowed for. A fundamental principle is that applications for development should be allowed, having regard to the development plan and all material considerations, unless the proposed development would cause demonstrable harm to interests of acknowledged importance. This approach is in accordance with PPG1² and current legislation³.

² *Planning Policy Guidance Note No.1 - General Policy & Principles, February 1997.*

³ *Town and Country Planning Act 1990 - Section 54A (as inserted by Section 26 of the Planning & Compensation Act 1991).*

TABLE 1.3 WASTE PRODUCTION AND CURRENT MANAGEMENT PRACTICES IN NOTTINGHAMSHIRE

CATEGORY		DEFINITION AND MAIN SOURCES	WASTE MANAGEMENT PRACTICES
COLLIERY SPOIL		Waste shale and rock brought to surface as a result of underground coal-mining	Most is tipped on land close to the pithead.
POWER STATION WASTE	POWER STATION ASH	Comprises pulverised fuel ash (PFA) and furnace bottom ash (FBA) from the four Trent Valley Power Stations.	All FBA and an estimated one third of PFA used as a secondary aggregate. Remainder of PFA used mainly to infill sand and gravel workings or surface tipped near the Power Station.
	DESULPHO-GYPSUM	By-product of the flue gas desulphurisation plant at Ratcliffe-on-Soar Power Station. This reacts limestone with sulphur dioxide to produce gypsum and carbon dioxide.	Most is sold as a gypsum substitute for plasterboard manufacture, but some, including residues, requires disposal.
CONSTRUCTION AND DEMOLITION WASTE		Comprises brickwork, excavated materials, masonry, hardcore, pipe-work, timber and rubble from construction and demolition projects.	Most to disposal sites, some used as a secondary aggregate.
INDUSTRIAL WASTE		Includes materials such as paper, card, plastic, wood, metal, tyres, canteen waste, oils, batteries, hazardous and clinical wastes from industrial activities.	Most to disposal sites, some incinerated and some recycled.
HOUSEHOLD WASTE		Waste foodstuffs, paper, glass, metal, plastic and textiles from households, hospitals, schools, residential homes and similar establishments.	Most to disposal sites, some incinerated, small amount recycled.
COMMERCIAL WASTE		Waste materials from premises used for trade, business, sport, recreation or entertainment.	Most to disposal sites, some incinerated, small amount recycled.

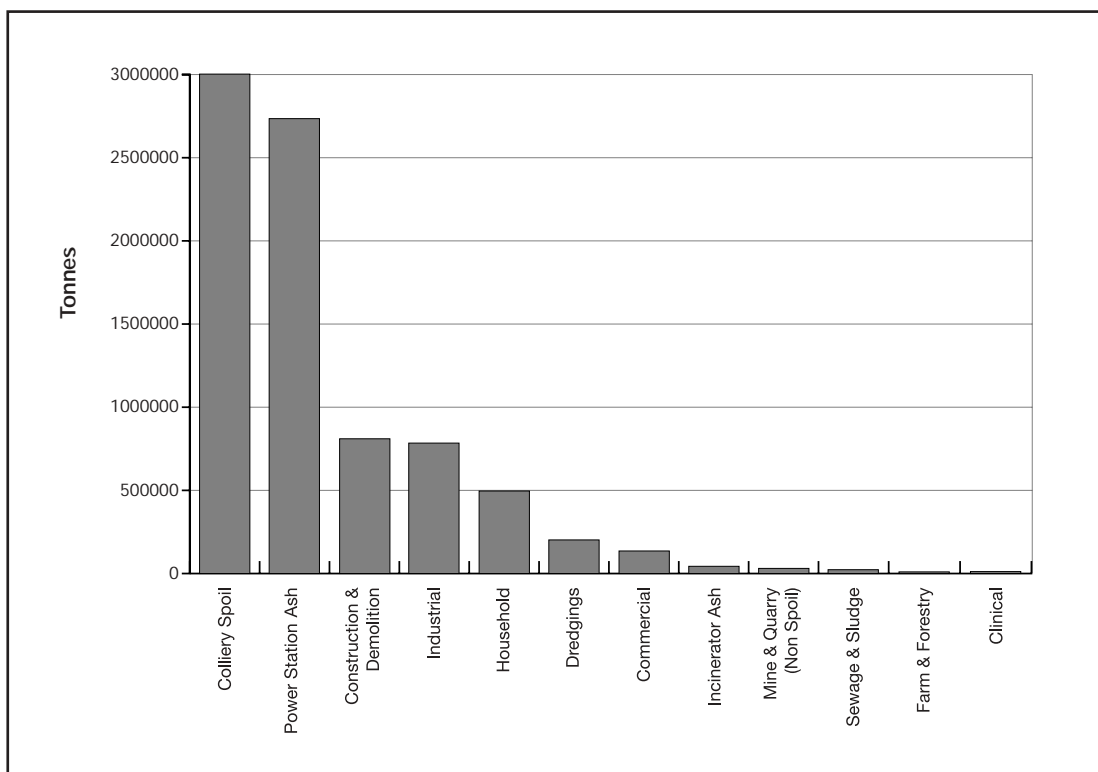
Table 1.3 contd....

CATEGORY	DEFINITION AND MAIN SOURCES	WASTE MANAGEMENT PRACTICES
RIVER AND CANAL DREDGINGS	Gravels, sands, silts and clays dredged from water-courses to maintain channel profiles. The River Trent is the main source.	Most spread on land adjacent to water courses, some disposed in sand and gravel workings. Also used as a secondary aggregate.
INCINERATOR ASH	Residue from the incineration of waste. Majority from Eastcroft Incinerator, Nottingham.	All to disposal sites
MINE AND QUARRY WASTE (excluding spoil/overburden)	Includes canteen wastes, oils, scrap metal and batteries derived from mineral extraction industries.	Most disposed of, or treated, recycled, incinerated.
SEWAGE SLUDGE	Sludge from the treatment of raw sewage and waste from septic tanks and cesspools.	Most is treated and either spread upon or injected into agricultural land. Some is exported to landfill/raise sites outside of the County.
FARM AND FORESTRY	General wastes from farms including animal slurry, scrap metal, polythene bags, and timber.	Animal slurry is spread on agricultural land. The scrap metal is usually recycled, the remainder is disposed of.
CLINICAL WASTE	Human/animal and other waste material from hospitals, nursing homes, veterinary surgeries and similar establishments, which presents risk of infection and may be hazardous to persons coming into contact with it.	All clinical waste is incinerated, often after collection via special transfer stations.
LOW LEVEL RADIOACTIVE WASTE	Low level radioactive waste from hospitals and industry.	All is exported to specially licensed disposal sites outside the County.
SPECIAL WASTE	Waste from any of the above categories which presents a specific hazard to health and may require special treatment and disposal.	Most is exported to incinerators outside of County. Some treated and recycled.

WASTE PRODUCTION AND MANAGEMENT PRACTICES IN NOTTINGHAMSHIRE

- 1.6 Nottinghamshire produces approximately 8 million tonnes of waste each year (see Fig 1.1). Colliery spoil and power station waste account for over two thirds of this figure. Other major sources include dredgings, construction, demolition, industrial, household and commercial wastes, incinerator ash and sewage sludge. A more detailed breakdown of waste arisings in Nottinghamshire and current management practices is given in Table 1.3.

Figure 1.1 Nottinghamshire - Annual Waste Arisings



Source - Waste Management Statement NCC 1996.

- 1.7 Current waste management practices in Nottinghamshire generally reflect the national picture of a heavy reliance on disposal, although, as Table 1.3 indicates, there is wide variation between waste categories. For example, approximately 11% of household, commercial and industrial waste is incinerated and a significant proportion of power station ash is recycled as a secondary aggregate or cement additive. Most clinical waste is incinerated, and agricultural wastes are often spread on land as a fertiliser.
- 1.8 It should be noted that the management of colliery spoil is considered in the Minerals Local Plan (see Para 1.13). Future requirements for colliery spoil disposal will not therefore be subject to proposals in the Waste Local Plan. However, the Plan does consider the role of colliery tips as potential reception sites for the disposal of other wastes (see Chapter 10).

POLICY CONTEXT

National

- 1.9 To date there is no comprehensive national plan setting out planning policies for waste development. However, the Government's strategic approach towards sustainable development and waste management is contained in a series of important documents which form the basis of the waste management strategy set out in Chapter 2.
- 1.10 Advice on statutory provisions and Government Policy is available in the form of Planning Policy Guidance Notes (PPGs). Other useful advice on waste management issues is contained within Minerals Planning Guidance Notes (MPGs), and guidance from the Environment Agency.

Regional

- 1.11 Regional Planning Guidance for the East Midlands (RPG8) was published by the Department of the Environment in 1994. Its main aim is to provide a framework for up-dating Structure Plans within the Region. This guidance considers waste, pollution, renewable energy and water issues. Where appropriate, this guidance should be reflected in Local Plan Policies. Waste is an important issue for debate within the Regional Forum which comprises the constituent Local Authorities. Work is underway to prepare updated Regional Guidance up to the year 2021. A Public Examination of the Draft Guidance was held in June 2000 and the final guidance is expected to be published in 2002.

Local

- 1.12 The Nottinghamshire Structure Plan Review adopted in November 1996 provides the strategic framework for all Local Plans in the County. Nottingham City Council's Local Plan was adopted in October 1997. It provides the framework for land use planning in the City, but does not include any specific policies covering waste. Both Plans are in the process of being reviewed by the Councils.
- 1.13 The Nottinghamshire Minerals Local Plan (Adopted November 1997) is the first Local Plan covering the entire range of mineral extraction in the County. It examines the main environmental issues associated with mineral working proposals, many of which will be relevant when considering waste disposal development. In particular, it addresses issues relating to the production of mineral wastes and the use of waste in reclaiming mineral voids.
- 1.14 The Nottinghamshire Green Belt Local Plan, approved in 1989, protects the Green Belt around Nottingham from inappropriate development. Therefore, it has important implications for the location of future waste management facilities in the Greater Nottingham area. The Plan is gradually being replaced by District-wide Local Plans as they become adopted.
- 1.15 There are four other relevant non-statutory plans to which the County Council contributes.

- (a) Sherwood Study: A Vision for Sherwood Forest (October 2000);
 - (b) The Strategic Plan for Greenwood (September 2000);
 - (c) Nottinghamshire Local Biodiversity Action Plan (1998);
 - (d) Nottinghamshire Landscape Guidelines (1998).
- 1.16 The City and District Councils produce local plans, which have either been adopted or are in the course of preparation. All contain policies about their local environment and some have addressed local waste issues. Where appropriate, these policies will be taken into account in the Waste Local Plan.
- 1.17 The policies and proposals of these plans will be taken into consideration in determining all future planning applications for waste management facilities.
- 1.18 Nottinghamshire County Council, and all the District Council's are working together to prepare an 'Integrated Waste Management Strategy' for the County. A separate, but complementary, strategy is being prepared by the City of Nottingham. Both strategies will consider the full range of policy and strategic issues in respect to the management of municipal waste in Nottinghamshire. This will include existing operational and financial arrangements for waste minimisation, waste collection, recycling, composting and disposal as well as considering new arrangements which could be introduced to promote initiatives higher up the waste management hierarchy. These considerations will drive the formation of the new City and County Council strategies, which will, in turn, feed into the review of the Waste Local Plan which will identify and consider the land use implications.

THE COUNTY AND CITY COUNCIL'S ROLE IN WASTE PLANNING

- 1.19 In April 1998, Nottingham City Council became a unitary authority and consequently the Waste Planning Authority (WPA) for that part of the County. The County Council is the WPA for the remainder of the County. The City and County Councils are jointly promoting the Waste Local Plan and are responsible for the determination of planning applications for waste management in their respective areas.
- 1.20 The Waste Regulation Authority (WRA) is the Environment Agency, although this function was formerly carried out by the County Council. The WRA is responsible for providing advice and information to the Secretary of State for the Environment, Transport and the Regions. The Agency is therefore preparing a series of Strategic Waste Management Assessments which will collate data on a regional basis. These statements will replace the Waste Disposal Plans previously prepared by the old regulation authorities, although these remain the relevant technical advice in the interim. In Nottinghamshire's case the "Waste Management Statement" 1996 provides such technical information. In addition, the Strategy for Sustainable Waste Management in the City of Nottingham 1997 - 2000 sets out the City Council's approach to waste management.

- 1.21 The Waste Local Plan has been prepared under the Town and Country Planning Act 1990, as amended by the Planning and Compensation Act 1991, and in accordance with the Nottinghamshire County Council Local Plan Scheme. In addition to the Environment Agency, the County Council liaises with other organisations with responsibility for waste management related matters. For example, the control of nuisance from noise and dust may involve the relevant District Council's Environmental Health Department. The Waste Local Plan sets the land use planning framework. The Integrated Waste Management Strategy, described above, will assess waste management options and contractual criteria for the management of municipal waste.

CONTENT, FORMAT AND TIMESCALE

- 1.22 This Local Plan comprises a Written Statement and a Proposals Map with insets. The Written Statement is divided into two parts. Part 1 sets out the strategy of the Plan and the general principles and policies applicable to all types of waste facilities in the County. Part 2 considers the options for managing waste, the need for future waste management facilities and sets out proposals to meet that demand over the Plan period.
- 1.23 The base date for the Plan is 1st January 1995 and the Plan period extends 10 years to 31 December 2004. Proposals must conform generally to the Structure Plan Review. Normally, only those developments which are expected to commence during the Plan period should be formulated as proposals. However, in view of the special circumstances of waste development, particularly where large capital investment is needed, the Plan will, as appropriate, look beyond this timescale.

ENVIRONMENTAL APPRAISAL OF DEVELOPMENT PLANS

- 1.24 Environmental appraisal is an important instrument in the preparation and review of development plans. PPG 12 'Development Plans'⁴ sets out that an environmental appraisal should apply to all types of plan, policies and proposals and is an integral part of plan making and review. An environmental appraisal can be defined as a process of identifying, quantifying, weighing up and reporting on environmental effects of policies and proposals. Further details of the procedures are set out in the Department of the Environment's Good Practice Guide⁵.
- 1.25 A retrospective environmental appraisal was carried out on the Consultative Draft Waste Local Plan and was integral to the preparation of the Deposit Draft Waste Local Plan.

⁴ *Planning Policy Guidance Note No. 12 'Development Plans' 2000*

⁵ *DOE 'Environmental Appraisal of Development Plans: A Good Practice Guide'. 1994. HMSO*

MONITORING AND REVIEW

- 1.26 The Waste Local Plan has been prepared on the basis of the best information available at the present time. Some of this information may be imprecise. For example, most waste is not normally weighed as it arises but may be weighed at the disposal site. In addition some wastes dealt with by other methods such as garden bonfires are difficult to estimate.
- 1.27 One of the biggest problems of planning ahead is future uncertainty. It is difficult to forecast with any precision when certain developments will take place or when schemes will be completed. Changing economic conditions will have an important bearing on the rates of construction and industrial waste generation, and the viability of incinerating and recycling waste materials. Monitoring of the situation is therefore essential in order to ascertain whether policies are being implemented as envisaged and to assess future needs.
- 1.28 Circumstances which have to be closely monitored include:-
- (a) changing legislation, national and regional policies and European Community directives, together with the effect of waste policies adopted by other local authorities;
 - (b) changes in the arisings of waste, both regionally and locally, including the recycling and re-use of waste materials;
 - (c) the impact of tax penalties on landfilling and tax incentives or credits upon the levels of recycling or incineration;
 - (d) the availability of new information regarding the different options for waste disposal and treatment;
 - (e) changes in waste disposal, treatment, recycling and transport costs;
 - (f) the number and volume of sites for waste disposal, transfer and treatment with planning permission;
 - (g) the performance of operators in complying with conditions attached to planning permissions;
 - (h) changes in public and political attitudes and perceptions, in particular regarding environmental issues;
 - (i) changes in the designation and significance of the competing land-uses and resources, for example, nature conservation and recreational uses.
- 1.29 Future reviews of the Plan will allow the above changes to be accommodated, as appropriate.