

APPENDIX 8.1 – NOISE MONITORING DATA LOCATIONS

Beech Farm

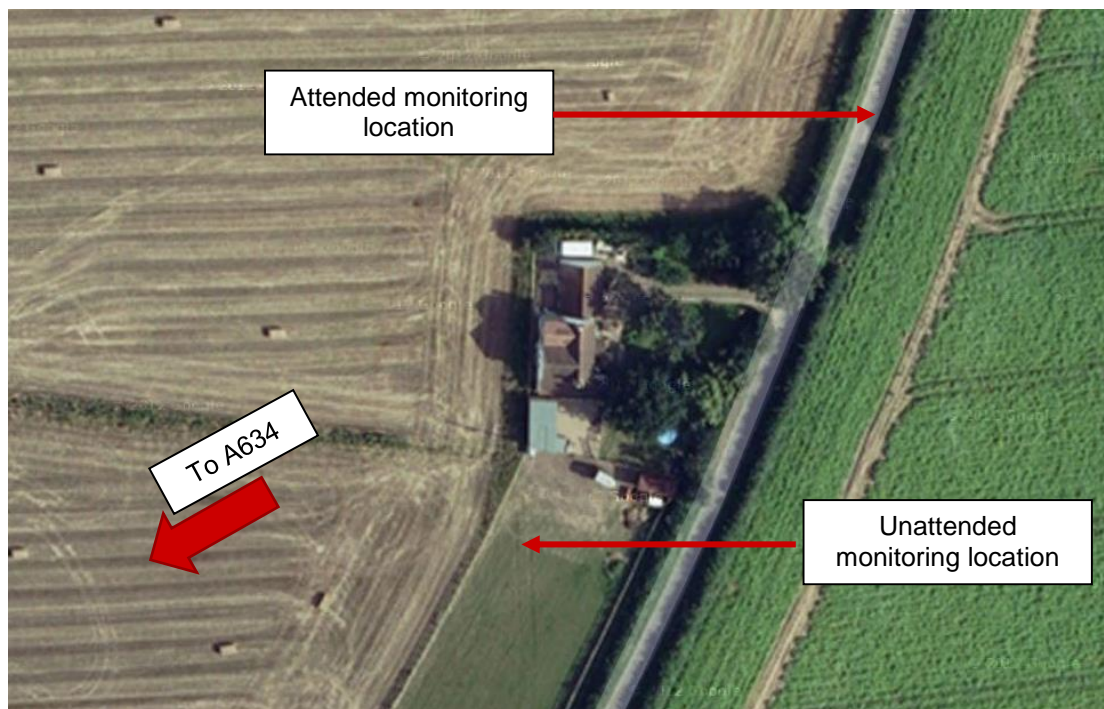


The unattended monitor was installed in the north-east corner of the property close to the border with the neighbouring farmland. This location was approximately 30 m from the wall of the property itself and 400 m to the north east of the A1. The position of the monitor relative to the property and to the A1 is shown in the photos below, with the A1 highlighted in yellow for clarity.



The attended monitoring location was selected to be some distance away from the property (approx. 300 m from the unattended monitoring position) in order to avoid disturbing dogs located at the property during late night survey work. This monitoring location was 780 m from the A1 at its closest point and located in a field entrance way on Tinker Lane.

Billy Button Cottage



The unattended monitor was installed in the field to the south of the main property, close to the border with the farmland to the west of the property. This location was approximately 30 m from the property and 590 m from the A634 at its closest point. The road running past the property was observed to be relatively unused during the survey periods. The position of the monitor relative to the property may be seen in the photo below.



The attended monitoring location was approximately 70 m to the north east of the attended monitor at the entrance to the neighbouring field, approximately 640 m from the A634 at its closest point.

College Farm



The attended monitoring location at the College Farm site was at the driveway of the nearby properties, approximately 10 m to the east of the nearest property, and approximately 5 m to the west of the A638. The position of the monitor with respect to the nearest properties is shown in the photos below.



The road close to the property was observed to be very busy during the daytime survey, and conversation with residents suggests that traffic during this period was elevated as a result of a partial closure of the A1.

Grange Farm



It was not possible to gain access to the Grange farm property itself, and so a proxy location was selected down Tinker Lane a similar distance away from the A634 road running past the property. Subsequently, the monitor was located approximately 12 m away from the edge of the A364 in a small layby located at the entrance of Tinker Lane, as shown in the photo below.



Jubilee Farm



It was not possible to monitor at the Jubilee Farm location, and so a proxy monitoring location was selected to the north west of the site at the entrance to farm land. The monitor was situated a similar distance away from the road to the Jubilee Farm property, and can be seen in relation to the A634 in the photo below.

