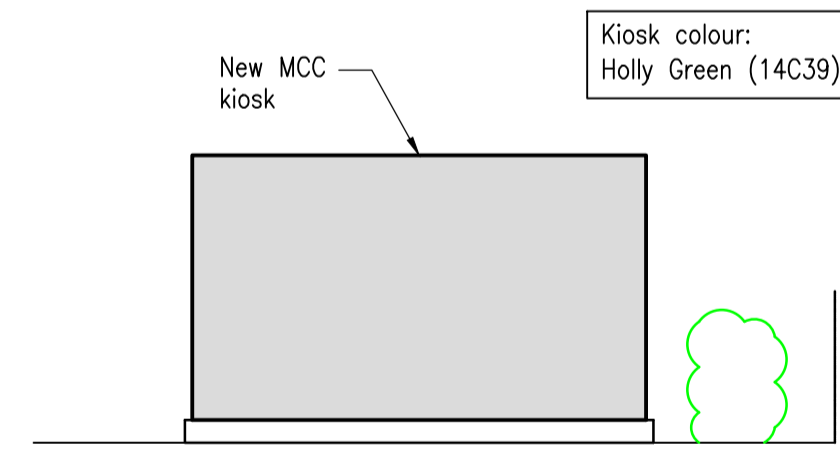
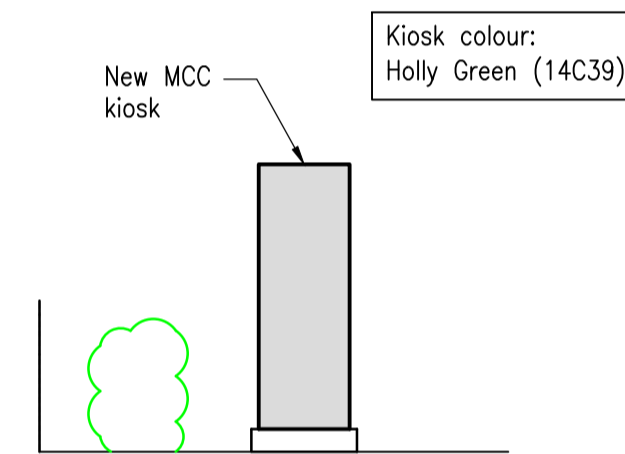
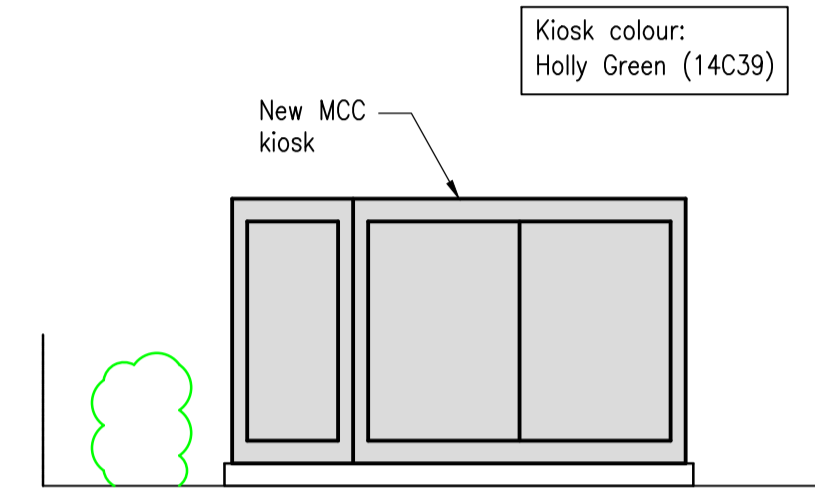
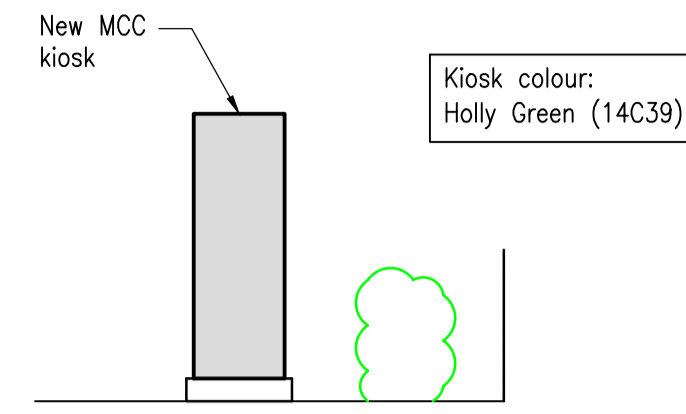
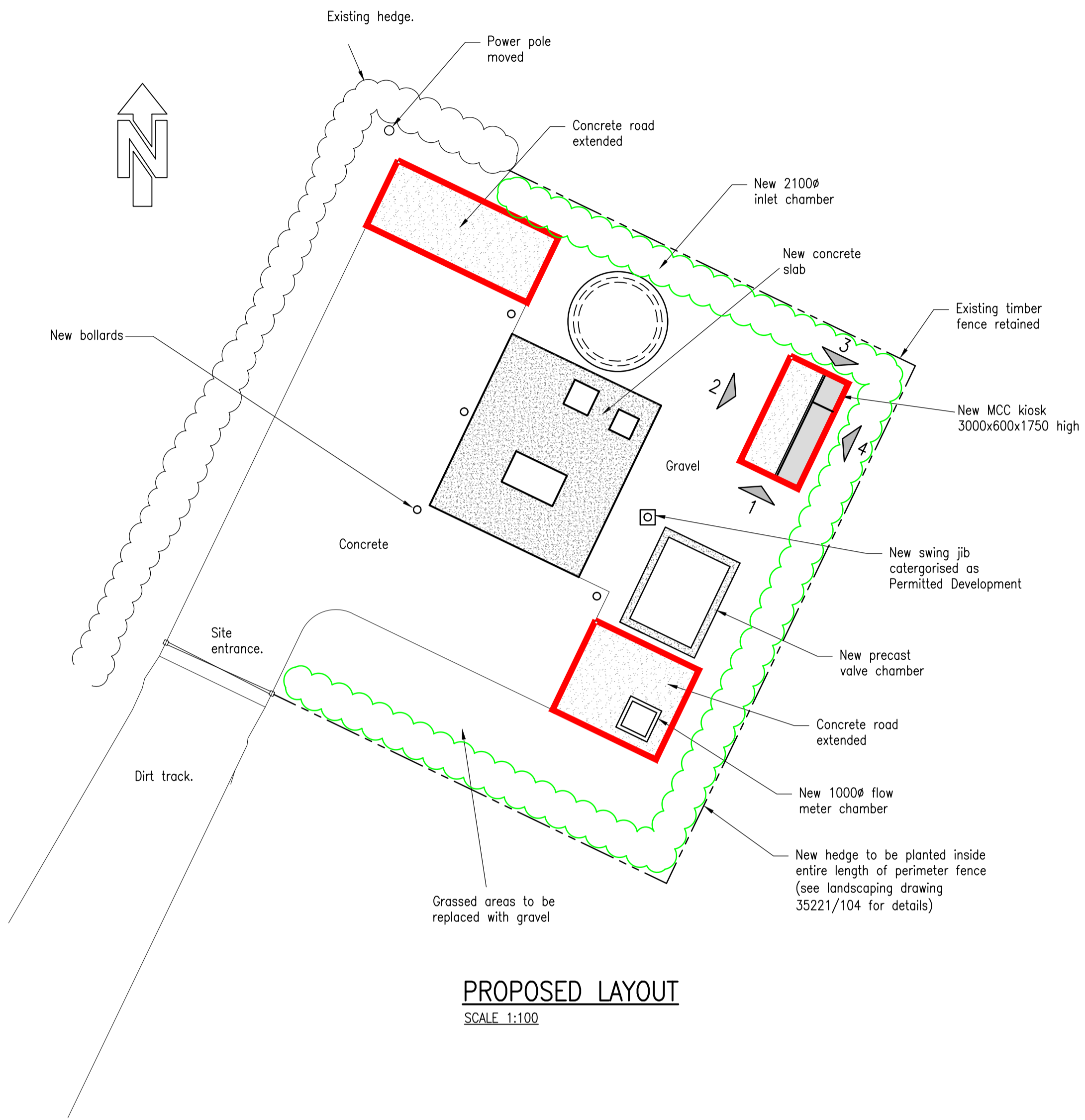


NOTES



| A | First Issue. | | | |
|-----|--------------|-----|-----|------|
| REV | DESCRIPTION | SIG | CHK | DATE |

NMCNomenca

BOUGHTON, TUXFORD ROAD SPS

PROPOSED SITE LAYOUT

Eastwood & Partners
CONSULTING ENGINEERS

St. Andrew's House
23 Kingfield Road
Sheffield
S11 9AS

Tel 0114 255 4554
Fax 0114 255 4330

mail@eastwoodandpartners.com
www.eastwoodandpartners.com



| | | | |
|--------------------------|----------|----------------|--|
| SCALE WHEN PLOTTED AT A1 | | DRAWING STATUS | |
| 1:100, 1:50 | APPROVAL | | |

| DRAWN | CHECKED | DATE | DRAWING NUMBER | REV |
|-------|---------|----------|----------------|-----|
| CD | SRE | 22-05-13 | 35221/103 | A |

SEVERN TRENT WATER DRAWING NUMBER
A5S/01233-CE-00103