



# Nottinghamshire SAFEGUARDING CHILDREN Board

Working in Partnership to Safeguard  
Children & Young People

## Annual Report 2008/2009 and Business Plan 2009/10



# Nottinghamshire Safeguarding Children Board

The establishment of Local Safeguarding Children Boards was prescribed within the Children Act 2004, it became a statutory requirement to have a Board in place from April 2006.

Nottinghamshire Safeguarding Children Board (NSCB) has two broad related functions to:

- **Coordinate** local work to safeguard and promote the welfare of children
- **Ensure the effectiveness** of that work

This work can only be done by working together across agencies and with other key partnerships. The Board is committed to making a difference to the lives of all of children and young people in Nottinghamshire and will work hard to make this happen.

## NSCB Vision statement:

*By working together we will ensure that Nottinghamshire is a safe and secure place in which children and young people can live and grow.*

| <b><u>Contents</u></b>  | <b><u>Page No.</u></b> |
|---|------------------------|
| <b>Chairs Introduction</b>  | <b>4</b>               |
| <b>NSCB Membership</b>  | <b>6</b>               |
| <b>NSCB Structure Diagram</b>   | <b>8</b>               |
| <b>Review of 2008/09 Business Plan<br/>and the work of the Board Sub-groups</b> | <b>9</b>               |
| <b>Financial Report</b>   | <b>22</b>              |
| <b>Statistical Report 2008/09</b>   | <b>27</b>              |
| <b>2009/10 Business Plan</b>  | <b>40</b>              |

## NSCB Annual Report



### Chair's Introduction

I took up the position of Independent Chair for the NSCB on 1<sup>st</sup> May 2009. Safeguarding services across the UK came under intense scrutiny following the death of Baby Peter in Haringey in October 2008. Lord Lamings' review – The Protection of Children In England: A progress Report and the government's response to it have caused all agencies again to consider the work they do and how they can better safeguard all children, particularly the most vulnerable. The NSCB contribution to the Children and Young People's Plan focuses on the needs of the most vulnerable children in our community and it is, aptly, identified as priority number one.

It is clear to me that the Nottinghamshire Safeguarding Children Board is an excellent organisation with good foundations on which to build from and I look forward to working with colleagues from all partner agencies. As independent chair of the board I will ensure that it builds upon current

achievements in safeguarding the children and young people of Nottinghamshire.

I am especially committed to ensuring that the community, including young people themselves, are engaged with the work of the board. Agencies cannot safeguard children on their own and I therefore want to work towards everyone in Nottinghamshire feeling a responsibility for keeping them safe and knowing how to do this.



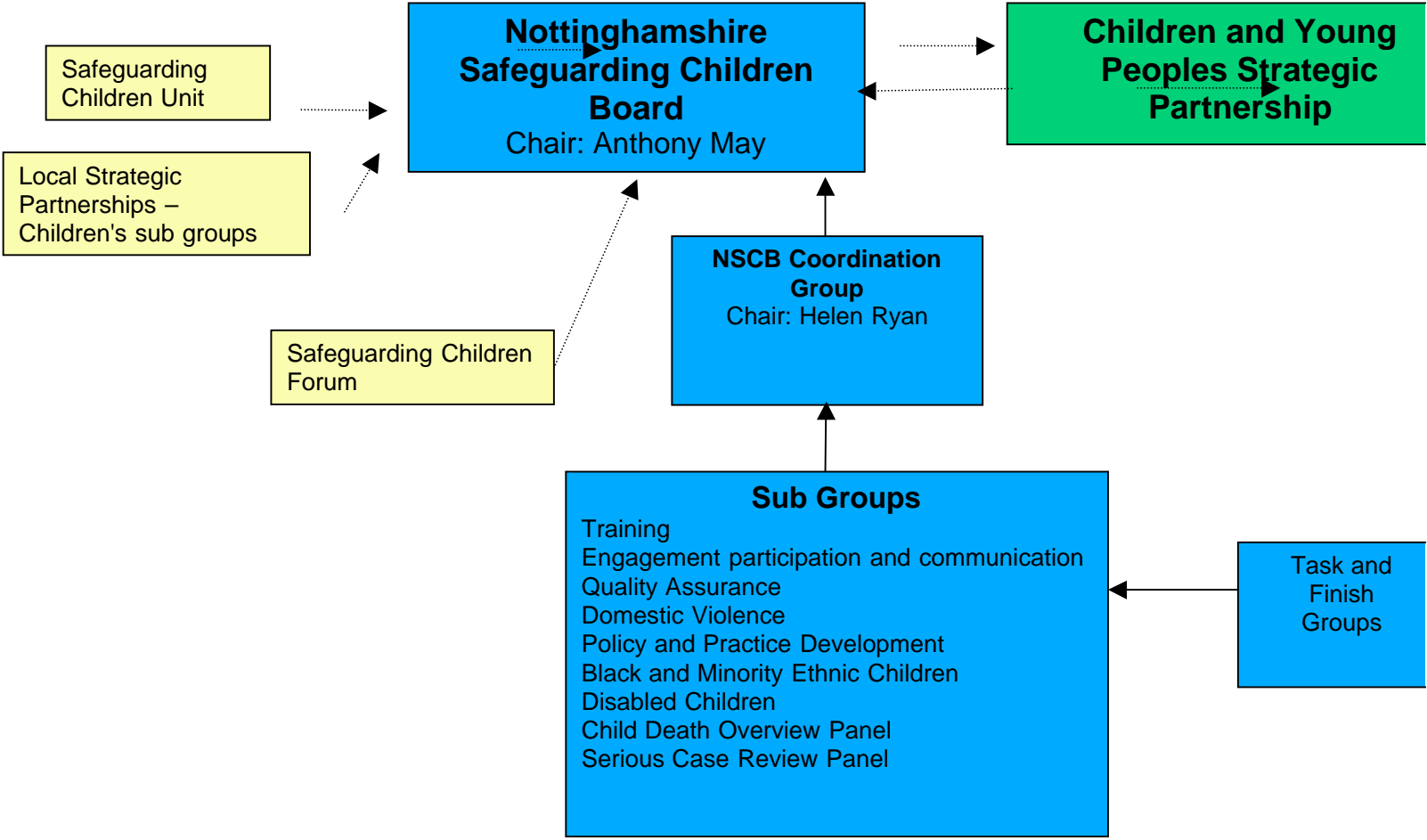
## NSCB Membership (as at 11<sup>th</sup> July 2008)

|                                |   |
|--------------------------------|---|
| Anthony May<br>Chair           | Acting Strategic Director, Children and Young People's Services, Nottinghamshire County Council                           |
| Helen Ryan                     | Service Director, Social Care and Health, Children and Young People's Services, Nottinghamshire County Council            |
| Dr Yin Ng                      | Consultant Comm. Paediatrician (Designated Doctor – CP), Nottinghamshire tPCT   |
| Cathy Burke                    | Designated Nurse, Bassetlaw PCT   |
| June Dickens                   | Nurse Consultant/Designated Nurse – Safeguarding Children, Nottingham City PCT  |
| Judy Bizley                    | Consultant / Designated Nurse – Vulnerable Children, Nottinghamshire tPCT   |
| Julie Gardner                  | Associate Nurse Director, Nottinghamshire Healthcare Trust  |
| Det Supt Adrian Pearson        | Nottinghamshire Police  |
| Eleri. DeGilbert<br>Vice Chair | Managing Director, Nottinghamshire Community Health Nottinghamshire tPCT  |
| Laurence Jones                 | Service Head – Youth Offending Service, Nottinghamshire County Council  |
| John Endersby                  | Operations Manager, Connexions  |
| Julie Leigh                    | Deputy Director – Offender Management, Nottinghamshire Probation Service. Marina Road, Nottingham                         |
| Steve Palframan                | Strategic Director (Operations), Newark and Sherwood District Council   |
| Pam Rosseter                   | Head of Service, Safeguarding and Independent Review Children and Young People's Services, Nottinghamshire County Council |
| Paul Englan                    | Assistant Head of Legal Services (Litigation), Nottinghamshire County Council   |
| Gay Wood                       | Service Manager, CAFCASS  |
| Jane Appleby                   | Lead CAMHs and safeguarding, East Midlands SHA  |
| Julie Cotton                   | Deputy Director of Community Services, Bassetlaw PCT.   |
| Carolyn White                  | Director of Nursing, Sherwood Forest Hospitals NHS Trust  |

|                        |   |
|------------------------|---|
| Hilary Bond            | Director of Nursing, Doncaster & Bassetlaw Hospitals NHS Foundation Trust, DRI, Armthorpe Rd Doncaster DN25LT |
| Richard Wilding        | Head of Executive Office, Ashfield District Council   |
| Steve Brown            | Central Services and Corporate Project Manager, Bassetlaw District Council                                    |
| Joh Bryant             | Assistant Director of Housing, Broxtowe Borough Council   |
| Keith Tansley          | Head of Leisure Resources, Gedling Borough Council  |
| Ajman Ali              | Director of Housing Property and Operational Services, Mansfield District Council                             |
| Charlotte McGraw       | Head of Community Shaping, Rushcliffe Borough Council,  |
| Jon Wilson             | Service Director, Mental Health and Learning Disability, Adult Social Care and Health                         |
| Claire Baker           | Strategic Director, Nottinghamshire County Drug and Alcohol Action Team (DAAT)                                |
| Sue Fenton             | Voluntary Sector Representative Home Start , Nottingham   |
| Anne Spaight           | General Manger, Clinical Governance, Audit & Research – East Midlands Ambulance Service NHS Trust             |
|                        | Consultant in Public Health Medicine, Nottinghamshire County tPCT, Ransom Hall                                |
| Stephen Fowlie         | Medical Director – Nottingham University Hospital NHS Trust, Queens Medical Centre Campus                     |
| Paul Farrel            | Child and Adolescent Mental Health Services, Nottinghamshire Heathcare Trust.                                 |
| Amanda Sullivan        | Director of Nursing and Integrated Governance, Nottinghamshire County tPCT, Ransom Hall                       |
| Advisors to the Board: |   |
| Sarah Wells            | NSCB Training Coordinator, Learning and Development, Ludlow House   |
| Joe Foley              | NSCB Manager  |
| Jane O'Daly            | NSCB Development Manager  |
| Post vacant            | Board Administrator   |

# NSCB Structure

Links  
Accountability line



## Review of 2008/09 NSCB Business Plan and work of the Sub-groups

2008/09 was an extremely busy but productive year for the NSCB. This summary highlights our key achievements as well as areas requiring further work in 2009/10. The majority of the areas of work identified were completed as planned, where further work has been identified, these areas will be taken forward over the coming year.

### Overall

- The Joint Area Review found that safeguarding arrangements in Nottinghamshire were good
- The NSCB has appointed an Independent Chair who will begin work in early 2009/10.
- Membership continues to meet statutory requirements
- Attendance overall remains good
- A Board development day in October 2008 using the DCSF challenge and improvement tool has resulted in an action plan to take further take forward work in this area that extends into 2009/10 (see below). This included further consideration as to how the NSCB and C&YPPB can work together effectively.
- A Joint development session has been held with the children and young people's partnership Board and principles upon which strengthen and develop the relationship between the two partnerships agreed. This work was delayed to allow consideration of revised statutory guidance for children's trusts and specific proposals to be produced will also take account of the recently published Laming review
- A revised suite of performance information presented to the Board has allowed for the consideration of performance of relevant areas across the children and young people's plan. However the development of the NSCB's scrutiny of the C&YPP remains a key area for development
- MAPPA; an outline protocol between the MAPPA and the NSCB has been agreed. Further work on this has been delayed following a change of personnel in the MAPPA policy role.

## **Areas for further development**

- As reported, developing an effective relationship between the NSCB and C&YPPB remains the key area for development and will receive attention in early 2009/10
- The agreements reached between the MAPPA and NSCB to be operationalised.
- Further work is still required to support the link between the NSCB and the LSP children's groups and support work to establish locally based practitioner interface forums
- The financial strategy of the Board is still to be reviewed. This will be a priority for the coming year.

## **Policies and procedures**

- The NSCB has maintained comprehensive interagency procedures which have been made accessible as required and they have been subject to comprehensive review in early 2009/10 (see below)
- New/ revised NSCB Interagency practice guidance has been launched (in conjunction with the city) concerning Domestic Violence, Missing Children and Substance misuse. This was supported by very well attended cross authority seminars.
- Two seminars were delivered dealing with safer working practices

## **Areas for further development**

- Work is still required to complete cross authority, interagency guidance in relation to self harm, children from abroad, E safety and child sexual exploitation
- Safer working practice guidance to be revised when revised national guidance available

## **Engagement, Participation and Communication**



The NSCB has undertaken three public awareness raising campaigns over 2008/2009 regarding the risks of co-sleeping and latterly combining that with the issues of “what to do if you are worried about a child”, private fostering and anti-bullying messages. These have received a good response from the public and resulted in the production of high quality materials for future use by the Board and member organisations. Additionally general leaflets have been revised and updated.



In March 2009 there was an event jointly hosted by Nottinghamshire Association of Voluntary Organisations (NAVO) and the NSCB for voluntary sector organisations. Some 28 voluntary agencies attended the event which comprised presentations of the current issues in safeguarding children and then went on to undertake a facilitated completion of a specially designed s11 self assessment tool. The event was exceptionally well evaluated and analysis of their assessments will be reported on to the Board in the annual self assessment process.

With regard to participation has been carried forward and has culminated in an agreement with the Children and Young People's Board (CYPB) that a NSCB representative will attend the meeting of the CYPB twice a year to consult upon and discuss the work of the NSCB and the youth Engagement Worker who facilitates the work of the CYPB also attends the Engagement, Participation and Communication subgroup of the Board.

Lastly, a participation pilot project has been ongoing within the Children's Service teams in Ashfield and Mansfield and Newark and Sherwood. Initial results have provided positive feedback and work is underway to expand and embed this within the practice of Children's Social Care.

It is proposed to develop several public awareness raising campaigns over the year 2009-2010 timed to coincide with the wider health promotion community calendars. These will include co-sleeping campaigns in October 2009 and May 2010 as well as campaigns on various issues in Mental Health Action Week (March 2010), Child Safety Week (June 2010) and Alcohol Awareness week (tbc)

Work on Engagement, Participation and Communication will be progressed through the newly created sub-group comprised of various agency representatives, youth engagement workers and parent network coordinators.

### **NSCB Coordination Group**

The NSCB coordination group (formally known as the Executive) is chaired by Helen Ryan , Service Director, Childrens Social Care, NCC. The group is made up of the chairs and vice chairs of all of the NSCB sub-groups. The primary role of the group is to oversee the work of the sub groups to ensure a coordinated approach towards acheiving the aims of the NSCB as set out in the NSCB business plan. In performing this role the group supports the chairs and vice chairs in their role and acts as a problem solving forum.

### **The Training Sub-group**

In the year 2008 - 2009 the work of the sub group focussed on maintaining and reviewing the effective delivery of the training programme which continued to be well received by partner agencies. As part of engaging with a wider target audience, primarily who are less likely to access face-to-face training, a newly purchased e-learning package was made available for use by partner agencies. Therefore, taking all attendances at training courses, briefing, seminars and those registered for e-learning more than 1700 training places were used.

Recently the work of the training sub committee has revolved around reviewing our terms of reference and sub committee membership in order that we remain effective in our work. In addition to this there has also been an emphasis on the use of e-learning and increased take up of the package by partner agencies. A new training coordinator came into post in January 2009 and this has enabled work to move forward.

## **Training Statistics**

With regard to the training courses specifically, the overall number of training places used has increased from 928 for the year 07/08 to 1003 for 08/09. This is an overall increase of 8.08%.

As the figures at figure 1 indicate, colleagues from a broad range of agencies have accessed training places across core and specialist training events. As can be seen, there is a wide variation in levels of attendance and it remains unclear as to the reasons for this. The Training sub group will give this further consideration.

Total Figure of those who attended training events = 1003 (the average attendance being 20.5 per event).

Core = 508 (51%)  
(49%)

Subject Based Courses = 495

(Core being Introduction to Safeguarding Children and Working Together Parts 1 and 2)

## **Management of Information to Partner Agencies**

Further to a previous request at the Board for regular detailed information regarding attendance on NSCB training, each partner agency now receives quarterly attendance figures for their respective organisation. These are disseminated via the Training Sub- group or by email if there is no designated representative.

## **Seminar Programme and Briefings**

The NSCB has put on a number of seminars throughout the year in conjunction with colleagues from the Nottingham City Safeguarding Children Board. The subjects covered were:

- Safer working Practices (two events)
- Domestic Violence
- Safeguarding Vulnerable Young People
- Safeguarding Children of Drug / Alcohol Misusing Parents

In addition briefings were held in the county covering the following subjects

- What's New in Safeguarding
- Domestic Violence Practice Guidance Briefings (three events)

Approximately 590 training places were used by county based colleagues who accessed these briefings and seminars.

## **Proposed Training Programme for 09/10**

The publication of the 2009/10 training programme has been delayed to allow for us to review the programme against the Board's existing training strategy and national and local drivers. However, it was immediately apparent that we need to continue to deliver our core courses (Introduction to Safeguarding Children and Working Together Parts 1 and 2) so these have been publicised earlier in the year and demand appears to be high with places filling up quickly. Currently work is in progress to review and update these courses to ensure that they efficiently maximise learning opportunities and are as relevant across roles as possible.

With regard to the subject based courses, having reviewed against current national and local drivers and our training strategy, it is clear that the subject areas remain highly relevant to the current position. It is important however that content of each course is reviewed to ensure current research and lessons from practice (including serious case reviews) are reflected. Within this the learning outcomes and target audience for each course will also be reviewed. .

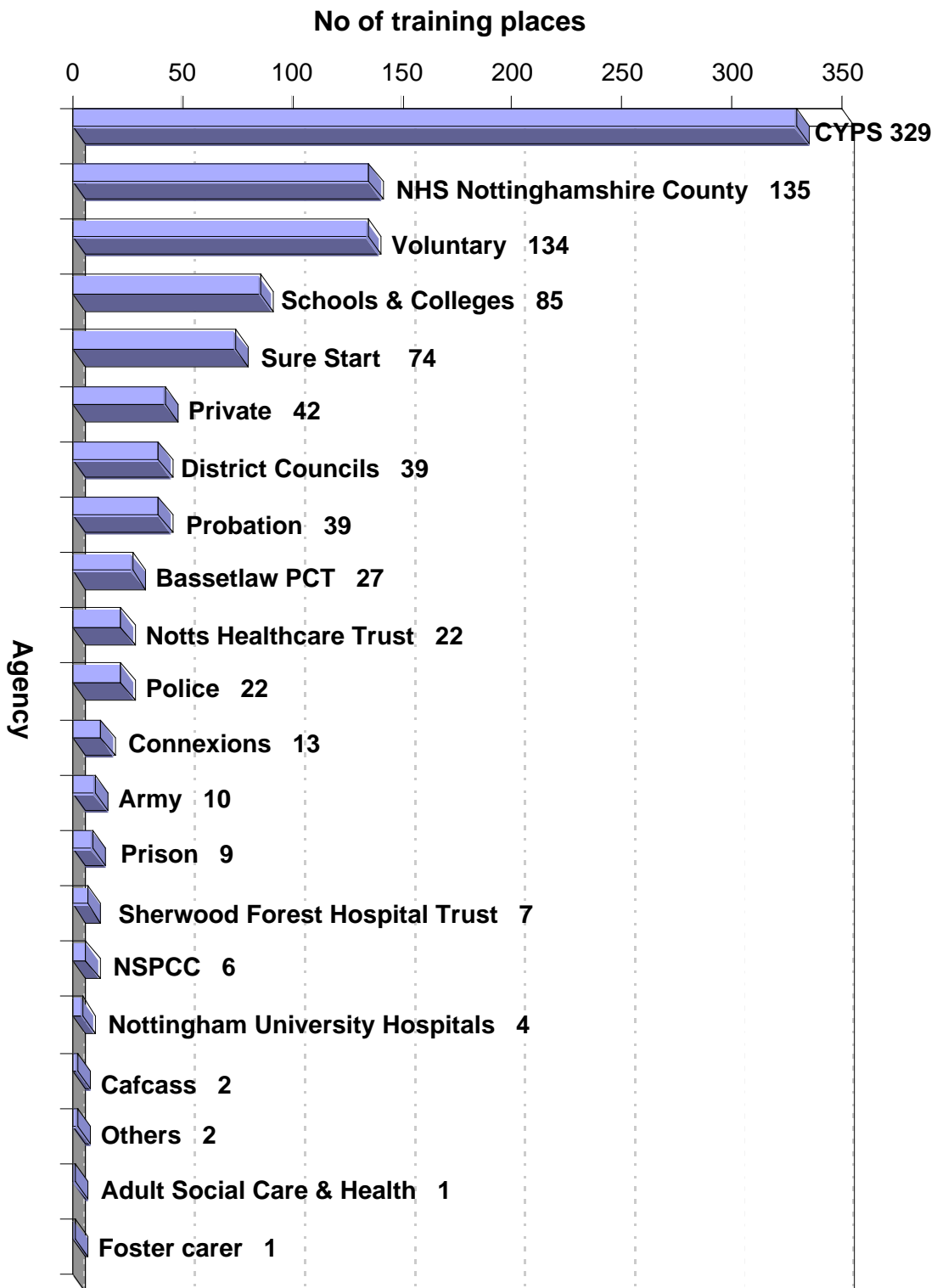
In relation to the levels of training delivered, in most areas we are delivering that which is required. However training aimed at managers and more specifically strategic managers remains an area for further development and we will be considering, with partners, how best this might be done.

## **Training Pool**

The majority of the core training events have been delivered by members of the training pool and who also deliver input on some of the subject based courses. In real terms the membership has decreased by 2 people in last few months, this from an already tight position. Over the last year we have had a number of problems covering core training events leading to courses being run by single trainers, the training

coordinator providing cover, and on occasion, having to buy in external trainers at short notice..

Recruitment and retention to the training pool will remain an area for attention over the coming year. The Board will need to be able to secure a renewed commitment to this pool approach if we are to continue delivering the training in the current manner. As part of this the training sub group will look again at the option of developing a service level agreement with partners to address this.



## **The Child Death Overview Panel**

Work to establish the CDOP commenced in advance of the April 2008 timeline and the first meeting was held in April 2008. Since then there have been 9 further Panel meetings.

Membership has comprised representatives from the Police, Bassetlaw PCT and NHS Nottinghamshire County, together with the Public Health lead, the Designated Paediatricians for Unexpected Deaths (DPUDs) covering Bassetlaw and the remainder of the County, the NSCB Manager and the service manager with responsibility for the management of the Child Protection Coordinators. Meetings are chaired by the Service Head, Safeguarding, from Children and Young People's Services. Regular cross-authority meetings are held with colleagues from the Nottingham City CDOP, in order to maintain as much consistency as possible between the two CDOPs in terms of processes, developments such as parental involvement and interpretation of national guidance. It was also envisaged that this arrangement would aid identification of wider public health issues by sharing information across the two authorities.

From April 2008 – March 2009, 59 cases received their final review and learning points have been identified and actions taken including for instance

- revised medical procedure for insertion of a cannula;
- additional guidance issued to hospital midwifery services regarding advice given to parents whose babies had been subject to additional heating as part of their treatment whilst in hospital.
- Other issues have been raised, for example, confirmation that an ongoing campaign regarding public awareness of infection identification is underway.

The death of young males from road traffic collisions has also been recognised as a particular issue and confirmation received that there is an ongoing educative programme aimed at boys in particular taking place within schools, led by the Road Safety Partnership. There has been liaison between that Partnership and the CDOP in order to ensure that relevant issues are shared and actions agreed.

Overall, good progress has been made to date in taking forward the additional responsibilities generated by the above areas of work. It should be noted that within Nottinghamshire all relevant agencies have shown considerable commitment to the continuing development of both the CDOP and rapid response arrangements.

### **The Domestic Violence Sub-group**

This Sub Group focus is on the provision and efficacy of services in meeting the needs of children affected by domestic violence. The first sub group meeting was in September 2008, chaired by Julie Leigh of the National Probation Service. There is representation from the National Probation Service, the Police, The Domestic Violence Policy Officer, NSCB, CYP Social Care, Nottinghamshire PCT, CAFCASS, Bassetlaw PCT, Mansfield District Council and Women's Aid.

The group meet on a quarterly basis and a close working relationship is developing between service providers to ensure that the Domestic Violence Action Plan CYPS Targets are reviewed, the development of the CAF is monitored and progressed, Prevention strategies are championed and service planning is coordinated where possible.

The sub group supports the increased availability of school nurses in holiday periods for children at risk, sustainable funding for relevant women and children's services, additional training for front line staff and implementation of the practice guidelines with regard to domestic violence and safeguarding issues. The group have developed a best practice tool kit. It is anticipated that this will be rolled out to other services during the current financial year.

### **The Standing Serious Case Review Panel**

The Standing Serious Case Review Panel is chaired by Pam Rosseter from Nottingham County Council Children and Young People's Services. The panel considers whether a serious case review, or a smaller scale review of individual cases, should be initiated following the death or serious injury of a child. In the case of child deaths, this is where abuse or neglect is known or suspected to be a factor. For serious injuries, the severity of the injury is one factor to be considered, together with other criteria, including whether there were any concerns regarding interagency working in the case.

The SCRCP has representation from the NCC Children and Young Peoples Services (social care and education perspective); police and health, in line with national guidance, together with the NSCB manager.

Meetings have been scheduled on a monthly basis in order that these child deaths can be considered in a timely way. In 2008 / 09, the SCRCP considered 8 unexpected deaths of children and young people. This resulted in recommendations being made to the Chair of the NSCB for full serious case reviews to be initiated in one case. The recommendation was accepted by the Chair and an independent author was commissioned to complete the overview report process. The Executive Summary in this case will be published on the NSCB website as soon as it is available.

### **The Quality Assurance Sub-group**

The Quality Assurance sub group is chaired by Pam Rosseter from Nottingham County Council Children and Young People's Services. The sub group met five times during 2007/08, an additional meeting being added in January 2008 in order to progress work appropriately. Representation on this sub group continued to be from the NCC Children's and Young Peoples Services, Police, Nottinghamshire Healthcare Trust, Nottingham City PCT, Bassetlaw PCT and Nottinghamshire County tPCT, together with the NSCB Manager. During the year this representation was enhanced by members joining from both Probation and the NSPCC.

A key element of the work of this sub group is to oversee the implementation of agencies' action plans arising from serious case reviews; this includes actions for County agencies identified as part of a serious case review initiated by another local authority. Additionally, during 2008 this sub group finalised guidance for health agencies regarding Section 85/86 responsibilities; considered the Nottinghamshire position against the Second Chief Inspectors' Report; established the framework to develop interagency practice guidance regarding self-harm; oversaw the development of revised information leaflets for parents and young people regarding child protection processes and a new public information leaflet; received reports regarding private fostering, missing children and allegations against staff; and received information from sole agency audits. During the year, the terms of reference of the sub group have been reviewed and revised to take into account the developing nature of the work of the NSCB. It has been agreed that this sub group should have a scrutiny role in overseeing the work of task and finish groups. During 2008/09, the sub group also coordinated a multi agency review of interagency work relating to children affected by parental substance misuse.

## **The Safeguarding Disabled Children and Young People Sub-group**

This sub group is chaired by Dr Yin Ng from the tPCT. The group meets quarterly and has representatives from Children and Young People's Services (social care, youth service and education perspective), Health, Connexions and Voluntary sector. Over 2008/09, work focussed on examining and making recommendations in relation to disabled children and young people progressing through safeguarding processes. As with the BME sub group, the connectivity with other groups looking at this area of work will be explored.

## **The Safeguarding Black and Minority Ethnic Children and Young People Sub-group**

This new group met for the first time this year and meets on a quarterly basis. The group is chaired by Laurence Jones from the Youth Offending Service and has a membership made up of colleagues the Police, Children and Young People's Services (Social Care, Ethnic Minority and Traveller Support Service and YOS), Connexions, and Health (CAMHS and the tPCT).

Effectively the group met for only six months of 2007/8 but over that period a key priority has been a focus on training across children's services to support the development of the competency of a multi agency workforce in assessing and working with BME safeguarding issues.

Excellent work has started to explore the impact on dual heritage children, particularly those looked after, of substance misuse. The sub group will also review current practice guidance and policies within single agencies to safeguard BME children.

The first year of the BME sub group has seen it contribute to the development of practice guidance in relation to; trafficked children, children from abroad, substance misuse, and unaccompanied children.

The future priorities will include monitoring across agencies to improve outcomes and reduce risk for BME children.

## **The Policy and Practice Development Sub-group**

This group, established in September 2008, has met on 4 occasions and has commenced working and analysing a revised CSC thresholds document and considering ways in which cases that have become “stuck” can be reinvigorated by new thinking and approaches to the case. It has become the home for the consideration of any issues potentially affecting safeguarding practice or policy within the County. This could be as a result of new legislation or national guidance, or issues or proposals being developed within the county. The group will also be the focus for consultation requests (national and local).

## **Financial Report**

The following report details income and expenditure over the year 2007/08 with explanatory notes. The report goes on to outline income and proposed expenditure for the year 2008/09.

The financial strategy of the Board will be subject to further consideration over the next year. Within this the range of agencies directly contributing to the Board’s budget, alongside the respective levels of contribution will be reviewed.

### **Income 2007/8**

|                       |         |
|-----------------------|---------|
| Carry Forward 2006/07 | £98,365 |
|-----------------------|---------|

#### Agency Contributions:

|                                    |          |                        |
|------------------------------------|----------|------------------------|
| Children & Young People’s Services | £127,032 |                        |
| CAFCASS                            | 550      |                        |
| Nottinghamshire tPCT               | 61,601   |                        |
|                                    |          |                        |
| Police                             | 16,846   |                        |
| Probation                          | 1,873    |                        |
|                                    |          | <u>207,902</u>         |
|                                    |          |                        |
| <b>Total</b>                       |          | <u><b>£306,267</b></u> |

## **Expenditure2007/08**

|                                 | <u>Salaries</u> | <u>Activities</u> | <u>Total</u>    |
|---------------------------------|-----------------|-------------------|-----------------|
| Child Protection Register       | £72,008         | £2,975            | £74,983         |
| Administration                  | 20,314          | 17,188            | 37,502          |
| Training                        | 66,138          | 22,456            | 88,594          |
| Training Pool                   |                 | 1442              | 1442            |
| Projects                        |                 | 0                 | 0               |
|                                 |                 |                   |                 |
|                                 | £158,460        | £44,061           | <u>£202,521</u> |
|                                 |                 |                   |                 |
| Carry forward figure to 2008/09 |                 |                   | <u>£103,746</u> |

## **Notes on year end expenditure 07/08**

### **The Safeguarding Children Information Management Team (SCIMT)**

The SCIMT projected budget was under spent by approximately £13,500. This was almost entirely accounted for by a significant under spend against the senior administrators salary due to redeployment pay arrangements. Relatively minor variances within salaries and activities offset some of the under spend. These redeployment pay arrangements have now come to an end.

### **Administration**

There has been an over spend against the projected administration budget by £6,914. Expenditure against salaries was under spent in the region of £1,554 due to the sickness absence of the NSCB administrator. This offset the over spend against activities of £8,390.

This apparent overspend largely reflects the planned expenditure arising from our increased activities relating to the NSCBs engagement strategy. This includes the cost of revised leaflets and briefing events, including the NSCB 'making a difference event' It also reflects an increased activity in the production of practice guidance and the Boards development day.

More detail relating to the activities of the development officer is outlined earlier in this report. The expenditure that can be associated with those activities totals some £7000, though a significant amount of this will be accounted for within the 2008/09 expenditure due to delays in invoicing.

## Training

Overall the training budget showed an under spend against projected expenditure of £1,543. However the £5000 expenditure on the E learning package masks a larger under spend against the activities part of this section of the budget. There are various reasons for this including cancelled course (resulting in not having to pay a consultants fee), lower than predicted expenditure against refreshments for those attending courses, training programme printing costs falling into next years budget and other lower than expected office costs.

## General

Due to the under spends described above, the projected expenditure against the NSCB contingency has not occurred though the planned activity has. Thus this has resulted in an overall slight increase in the level of the contingency carried forward into 08/09

## Proposed Budget 2008/09

### Income 2008/09

Funding levels and apportionments remain at the current levels allowing for a 2 \_ % increase for inflation resulting in an available funding as follows:

|                       |                 |
|-----------------------|-----------------|
| Carry Forward 2008/09 | <u>£103,746</u> |
|-----------------------|-----------------|

Agency Contributions:

|                                    |          |                 |
|------------------------------------|----------|-----------------|
| Children & Young People's Services | £130,208 |                 |
| CAFCASS                            | 550      |                 |
| Nottinghamshire tPCT               | 63,141   |                 |
|                                    |          |                 |
| Police                             | 17,267   |                 |
| Probation                          | 1,920    |                 |
|                                    |          |                 |
|                                    |          | <u>213,086</u>  |
|                                    |          |                 |
| Total funding available for 2008/9 |          | <u>£316,832</u> |

## **Proposed expenditure 2008/09**

The proposed expenditure of the NSCB reflects the programme of work set out within the 2008/09 workplan. The NSCB will continue to provide a comprehensive interagency training programme, the services of the safeguarding information management team (formerly the child protection register team), and administration for the Board and sub groups. The staffing costs associated with these functions represent the majority of the proposed expenditure. The expenditure listed under activities covers other costs incurred such as general office costs, printing of leaflets, practice guidance, room hire, costs of consultants (training, serious case reviews) etc. Within this are some notable predicted costs:

### **Serious Case reviews**

In line with Working Together 2006, we are now required to commission an independent author to write the overview report in serious case reviews. The costs associated with the two reviews commissioned towards the end of 2007/08 will be met within this year's budget. No further reviews have been commissioned thus far but £12500 has been allocated to meet the expected cost already incurred and possible costs for the remainder of the year.

### **'E' Learning**

This development has got off to a slow start and it will be decided later in the year whether we feel we should continue to offer this option as part of the NSCB training programme. Should we decide to continue to do so there will be a cost in the region of £5000. This amount has not been factored into the figures below but will show as expenditure against the contingency fund.

### **Safeguarding Children Information Management Team**

The team will shortly be moving from their current base to Meadow House in Mansfield. Within the proposed expenditure we have allowed for an additional staffing cost of £3500 to provide extra hours to prepare files for transfer. It remains unclear whether further costs associated with the move will be incurred. Should this be the case the contingency may have to be used to meet such costs.

## NSCB Manager

It should be noted that the cost of the NSCB manager post continue to be met outside of the NSCB budget. The cost of the post (around £45K including on costs) continues to be met jointly by Nottinghamshire County Council Children and young People's Services and Nottinghamshire tPCT. Future budget discussions will need to take account of this expenditure.

### Proposed Expenditure

|   | <u>Salaries</u> | <u>Activities</u> | <u>Total</u>    |
|---|-----------------|-------------------|-----------------|
| Safeguarding Children Information Management Team | £96,661         | £1,180            | £97,841         |
| Administration                                    | 23,279          | 12,430            | 35,709          |
| Training  | 67,257          | 26827             | 94084           |
| Training Pool                                     |                 | 570               | 570             |
| Serious case reviews                              |                 | 12,500            | 12,500          |
|   |                 |                   |                 |
|   | £187,197        | £53,507           | <b>£240,704</b> |
|   |                 |                   |                 |
| Total funding available                           |                 |                   | <u>£316,832</u> |
| Projected carry forward figure to 2009/10         |                 |                   | <u>£76,128</u>  |

## Statistical Report 2008/09

This report to the Nottinghamshire Safeguarding Children Board focuses on the key annual performance results for 2008/09. The first section of the report brings together a wide range of data to show outcomes for children and young people in Nottinghamshire against the National Indicators Set. It is based on data published in the Local Area Interactive Tool (LAIT) supplemented with updated and additional information from numerous sources including the DCSF, DoH, the Data Interchange Hub (the Hub), Ofsted and NCC Performance Review.

The following information is presented in the data tables for each NI:

- details whether good performance is characterised by higher/lower values
- outcomes since 2006/07 (although not all NIs have historic data back to 2006/07)
- where available a 2009/10 target
- details of the most recently published national data (this may not correspond directly to the most recent local data due to the time lag in publishing national datasets)
- an arrow indicating whether the trend is upwards, downwards or stable. The colour of the arrow indicates whether performance is positive (Green), negative (Red) or has remained stable (Orange).

The second section of this report provides an overview based on the information provided to the DCSF for the year ending 31st March 2009 via the CPR3 statistical return. The overview includes comparisons with previous year data and trend information.

Changes to the safeguarding system from 1st April 2008 mean that the 'Child Protection Register' is no longer referred to. In line with the latest 'Working Together' guidance the register has been replaced by the concept of 'Children subject of a child protection plan' (CPP)

### National Indicator Table Key.

L - Indicator is included within the LAA

C - Indicator is included within the Children and Young People's Plan

S - Indicator is one of the 10 statutory targets for education and early years

(p) - provisional data

\* For a number of NIs good performance is not simply measured by a higher lower value, but may require performance to be within a certain range albeit generally higher/lower, refer to NI definitions for further guidance



n/a – Data is currently not available for inclusion in the particular cell

## CONTENTS

|  |                     |
|--|---------------------|
|  | <b>Page<br/>No.</b> |
| National Indicators Annual data          | 4                   |
| National Indicators Commentary           | 6                   |
| CPR3 Statistical Return Analysis         | 7                   |
| Annex A – List of Statistical Neighbours | 14                  |

| Nottinghamshire Children and Young People National Indicators – Annual Data |   |        |       |       |       |                 |                     |                 |
|---|---|--------|-------|-------|-------|-----------------|---------------------|-----------------|
| NI  | Description   | Good   | 06/07 | 07/08 | 08/09 | 09/10<br>Target | National<br>Average | Yearly<br>Trend |
| <b>Be Healthy</b>   |   |        |       |       |       |                 |                     |                 |
| NI 50   | Emotional Health of Children (%) - <b>LC</b>  | Higher |       | 62.3  | n/a   | 64.8            | 63.3                | n/a             |
| NI 51   | Effectiveness of child and adolescent mental health (CAMHS) Services  | Higher | 16    | n/a   | n/a   | n/a             | 11.35               | n/a             |
| NI 52a  | Uptake of Primary school lunches (%) - <b>C</b>   | Higher |       | 37.8  | 38.20 | n/a             | 41.3                | ↑               |
| NI 52b  | Uptake of Secondary school lunches (%) - <b>C</b>   | Higher |       | 30.4  | 26.60 | n/a             | 37.7                | ↓               |
| NI 55   | Obesity among primary school age children in Reception Year (%) - <b>LC</b>   | Lower  | 9.8   | 9.9   | n/a   | 10.5            | 9.87                | ↑               |
| NI 56   | Obesity among primary school age children in Year 6 (%)   | Lower  | 17.2  | 18.4  | n/a   | n/a             | 17.48               | ↑               |
| NI 112  | Reduce the under 18 conception rate (per 1000 girls) - <b>LC</b>  | Lower  | 35.3  | n/a   | n/a   | 26.4            | 41.7                | ↓               |
| NI 115  | Reduce substance misuse by young people (%) - <b>C</b>  | Lower  |       | 10.7  | n/a   | n/a             | 10.9                | n/a             |
| <b>Stay Safe</b>  |   |        |       |       |       |                 |                     |                 |
| NI 59   | Initial assessments for children's social care carried out within 7 working days of referral (%)  | Higher | 79.4  | 79.0  | 65.0  | 80.0            | 71                  | ↓               |
| NI 60   | Core assessments for children's social care that were carried out within 35 working days of their commencement (%)  | Higher | 88.8  | 79.0  | 60.3  | 80.0            | 80                  | ↓               |
| NI 61   | Looked after children adopted during the year who were placed for adoption within 12 months of the agency deciding that the child should be placed for adoption | Higher | 53.3  | 62.1  | 51.6  | n/a             | 76.3                | ↓               |

|                                     |  |          |       |       |          |              |                  |              |
|-------------------------------------|--|----------|-------|-------|----------|--------------|------------------|--------------|
|                                     | (%)  |          |       |       |          |              |                  |              |
| NI 62                               | Stability of placements of looked after children: number of placements (%)   | Lower    | 10.7  | 8.6   | 5.9      | 6.0          | 11.4             | ↓            |
| NI 63                               | Stability of placements of looked after children: length of placement (%)  | Higher*  | 64.4  | 69.8  | 70.7     | 75.0         | 65.7             | ↑            |
| NI 64                               | Child protection plans lasting 2 years or more (%) - C   | Lower*   | 5.5   | 7.0   | 10.7     | <10          | 5                | ↑            |
| NI 65                               | Children becoming the subject of a Child Protection Plan for a second or subsequent time (%) - C                                   | Lower*   | 19.0  | 16.0  | 15.2     | 12.0         | 14               | ↓            |
| NI 66                               | Looked after children cases which were reviewed within required timescales (%)   | Higher   | 90.3  | 91.6  | 96.5     | n/a          | 87.56            | ↑            |
| NI 67                               | Child protection cases which were reviewed within required timescales (%)  | Higher   | 100.0 | 100.0 | 99.3     | 100.0        | 99               | ↓            |
| NI 68                               | Referrals to children's social care going on to initial assessment (%)   | Median * | 79.8  | 69.0  | 56.5     | 70.0         | 59               | ↓            |
| NI 69                               | Children who have experienced bullying (%) - C   | Lower    |       | 48.3  | n/a      | n/a          | 48               | n/a          |
| NI 70                               | Hospital admissions caused by unintentional and deliberate injuries to children and young people                                   | Lower    | 112.7 | 113.8 | n/a      | n/a          | 121.54           | ↑            |
| NI 71                               | Children who have run away from home/care overnight (based on self assessment)   | Higher   |       |       | 6        | n/a          | n/a              | n/a          |
| NI                                  | Description  | Good     | 06/07 | 07/08 | 08/09    | 09/10 Target | National Average | Yearly Trend |
| NI 111                              | Reduce the number of first time entrants to youth justice system aged 10-17 - LC   | Lower    | 2130  | 1530  | 903(p)   | 1440-1480    | 1840             | ↓            |
| <b>Make a Positive Contribution</b> |  |          |       |       |          |              |                  |              |
| NI 19                               | Rate of proven re-offending by young offenders (%)   | Lower    |       |       | 29.7 (p) | -3%          | n/a              | n/a          |
| <b>Additional Indicators</b>        |  |          |       |       |          |              |                  |              |
| NI 15                               | Serious violent crime rate (per 1000 population)   | Lower    | n/a   | 0.330 | 0.461    | n/a          | n/a              | ↑            |
| NI 17                               | Perceptions of anti-social behaviour. (%) (Collected via the new Place Survey and through the British Crime Survey)                | Lower    | 24    | 21.5  | n/a      | n/a          | 22.16            | ↓            |
| NI 28                               | Serious knife crime rate (per 1000 population)   | Lower    | 0.366 | 0.352 | 0.486    | n/a          | n/a              | ↑            |
| NI 29                               | Gun crime rate (per 1000 population)   | Lower    | 0.132 | 0.118 | 0.124    | n/a          | n/a              | ↑            |
| NI 32                               | Repeat incidents of domestic violence (%)  | Lower    |       |       | 31.0     | n/a          | n/a              | n/a          |
| NI 34                               | Domestic violence (Number of domestic homicide offences per 1,000 population)  | Lower    | 0.001 | 0.000 | 0.003    | n/a          | n/a              | ↑            |
| NI 41                               | Perceptions of drunk or rowdy behaviour as a problem (%) (Collected via the new Place Survey and through the British Crime Survey) | Lower    |       | 29.2  | n/a      | n/a          | 31.05            | n/a          |
| NI 42                               | Perceptions of drug use or drug dealing as a problem (%) (Collected via the new Place Survey and through the British Crime Survey) | Lower    |       | 35.2  | n/a      | n/a          | 32.65            | n/a          |

|       |  |        |      |      |      |     |      |   |
|-------|--|--------|------|------|------|-----|------|---|
| NI 48 | Children killed or seriously injured in road traffic accidents. The percentage change in number of children killed or seriously injured during the calendar year compared to the previous year. Figures are based on a 3 year rolling average, up to the current year. | Higher | 4.82 | 2.53 | 19.5 | n/a | 6.65 |  |
|       | Number of Children who are subject of a Child Protection Plan  | Median | 483  | 421  | 444  |     | n/a  |   |
|       | % of Children with Child Protection Plans from Ethnic Minorities compared with the general population  | Lower  | n/a  | 7.8  | 8.1  |     | n/a  |  |
|       | Allegations against individuals working with children  | Lower  | n/a  | n/a  | 89   |     | n/a  |   |
|       | Missing children (from home and looked after)  | Lower  | n/a  | n/a  | 1034 |     | n/a  |   |
|       | Children privately fostered  |        | n/a  | 12   | 15   |     | n/a  |   |
|       | Unaccompanied Asylum Seeking Children  |        | n/a  | 39   | 49   |     | n/a  |   |
|       | Initial assessments of children where domestic violence is a feature   |        | n/a  | 1175 | 1160 |     | n/a  |   |

## National Indicators Commentary

- **NI 59** Initial assessments for children's social care carried out within 7 working days of referral (%) - An initial assessment is deemed to have commenced at the point of referral to children's social care services. Nottinghamshire has achieved higher rates than statistical neighbours and the national average over the last two years, however there has been a significant fall in performance throughout 2008/09. An increase in the number of referrals remains a factor post Haringey and other high profile Serious Case Reviews. Demands resulting from the implementation of Phase 1b of the Integrated Children's System (ICS) which has presented social workers with changed recording requirements is also impacting on performance.
- **NI 60** Core assessments for children's social care that were carried out within 35 working days of their commencement (%) - Similar to initial assessment performance there has been a significant fall in 2008/09, however performance was on a par with statistical neighbours and national average figures. The new ICS system and the increased volume of work have impacted on performance. The situation will continue to receive close management scrutiny.
- **NI 62** Stability of placements of looked after children: number of placements (%) - In Nottinghamshire the number of children experiencing multiple moves has reduced considerably over the last four years exceeding national and our statistical neighbour's trends. Improved training of carers and support to placements has contributed to this.
- **NI 63** Stability of placements of looked after children: length of placement (%) - Nottinghamshire performance has exceeded national and statistical neighbour's over the last two years. Performance over 2008/09 reflects the continuation of stable placements for looked after children.
- **NI 64** Child protection plans lasting 2 years or more (%) - There was a significant decrease in the final quarter of the year but the high percentages in the middle part of the year have resulted in an increased year end figure. As a result of this Nottinghamshire's performance banding has dropped from 'Good' (Light green, 0<10) to 'acceptable' (Yellow, 10<15). Management oversight will continue.
- **NI 65** Children becoming the subject of Child Protection Plan for a second or subsequent time (%) - After two years where performance was only judged as 'Satisfactory' Nottinghamshire's position improved in 2007/08 and re-entered the 'Good' category, although still somewhat higher than SN and national figures. Overall performance continued to improve in 2008/09.
- **NI 68** Referrals to children's social care going on to initial assessment (%) - Nottinghamshire has had a higher percentage of referrals which result in initial assessments for each of the last three years when compared with statistical neighbours and national figures. Tight decision making at the point of referral has led to an overall percentage reduction for 2008/09 bringing Nottinghamshire more in line with statistical neighbours and national figures.
- **NI 111** Reduce the number of first time entrants to youth justice system aged 10-17 - Results year on year show a reduction in the number of 10 & 11 year olds entering the criminal justice system for the first time, demonstrating that

the work of Prevention services within the YOS is having a positive effect. Performance will now be based on DCFS and Police data and will not be available until late 2009.

- Number of Children with Child Protection Plans - From a position where Nottinghamshire had been above both national and statistical neighbours the number per 10,000 population aged 0-18 is now broadly in line with the national rate.

## **CPR3 Statistical Return Analysis**

This section provides an overview based on the information provided to the DCSF for the year ending 31st March 2009 via the CPR3 statistical return. The overview includes comparisons with previous year data and trend information. For completeness some information reported in the previous section has been repeated.

### **Referrals**

|   | <b>2007/08</b> | <b>2008/09</b> |
|---|----------------|----------------|
| Total number of referrals of children who have been the subject of referral (including re-referral) during the year | 6971           | 8464           |
| Number of these children whose referral occurred within 12 months of previous referral                              | 2067           | 2645           |
| Percentage of referrals occurring within 12 months of previous referral   | 30%            | 31%            |

- The volume of referrals has increased by 21% over the two years.
- The percentage of re-referrals has increased by one percentage point over the two years.

### **Initial Assessments**

|   | <b>2007/08</b> | <b>2008/09</b> |
|---|----------------|----------------|
| Completed within 7 working days of referral                                   | 3808           | 3106           |
| Other initial assessments completed   | 993            | 1675           |
| Total number of initial assessments during year                               | 4801           | 4781           |
| Percentage of initial assessments completed within 7 working days of referral | 79%            | 65%            |

- The volume of initial assessments carried out has reduced marginally by 0.4%
- The proportion of initial assessments completed within the 7 working days timescale has reduced from 79% to 65%. The implementation of the

Integrated Children's System is believed to have been the main influence in this reduction in performance.

### **Core Assessments**

|   | <b>2007/08</b> | <b>2008/09</b> |
|---|----------------|----------------|
| Completed within 35 working days of initial assessment                      | 1175           | 560            |
| Other core assessments completed  | 321            | 369            |
| Total number of core assessments during year                                | 1496           | 929            |
| Percentage of core assessments completed within 35 working days of referral | 79%            | 60%            |

- There have been 37.9% less core assessments recorded this year
- The proportion of core assessments completed within the 35 working days timescale has reduced from 79% to 60%. As for initial assessments the implementation of the Integrated Children's System is believed to have been the main influence in this reduction in performance.

### **Section 47 enquiries and initial child protection conferences held during year**

|  | <b>2007/08</b> | <b>2008/09</b> |
|--|----------------|----------------|
| Number of children who were the subject of S.47 enquiries initiated during the year  | 812            | 891            |
| Number of children who were the subject of ICPCs held during the year  | 531            | 537            |
| Number of children whose ICPCs were held within 15 working days of the initiation of the S47 enquiries which led to the conference | 460            | 459            |
| Percentage ICPCs held within 15 working days of the initiation of the S47 enquiries which led to the conference                    | 87%            | 85%            |

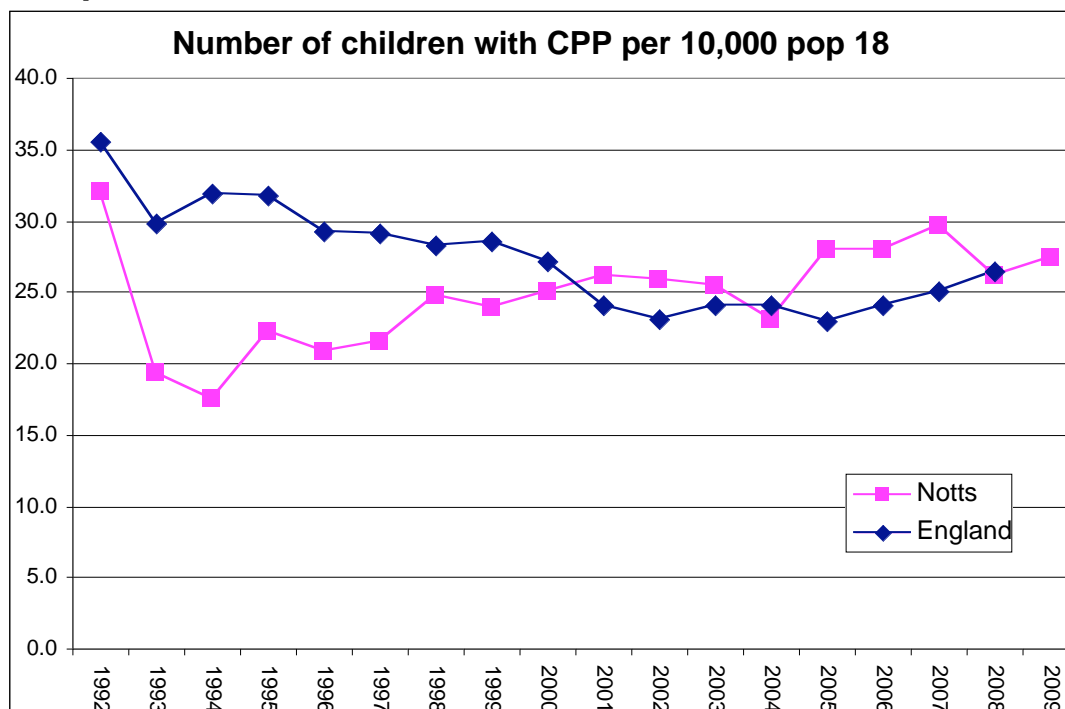
- The volume of Section 47 Enquiries initiated during the year has gone up by 9.7% compared with the previous year.
- There has been a slight increase by 1.1% in the number of children subject to Initial Child Protection Conferences.
- The proportion of ICPCs held within 15 working days of the initiation of the S47 enquiries which led to the conference has reduced very slightly but performance remains good at 85%.

## Children and Young People with Child Protection Plans at end of Year District and Locality Analysis

|                     | Mar-07     | Mar-08     | Mar-09     | %<br>Change   |
|---------------------|------------|------------|------------|---------------|
| Ashfield            | 94         | 58         | 73         | 25.9%         |
| Mansfield           | 87         | 75         | 83         | 10.7%         |
| <b>MAN/ASHFIELD</b> | <b>181</b> | <b>133</b> | <b>156</b> | <b>17.3%</b>  |
| Bassetlaw           | 93         | 77         | 67         | -13.0%        |
| Newark              | 60         | 101        | 78         | -22.8%        |
| <b>NEW/BASS</b>     | <b>153</b> | <b>178</b> | <b>145</b> | <b>-18.5%</b> |
| Broxtowe            | 52         | 31         | 55         | 77.4%         |
| Gedling             | 65         | 42         | 44         | 4.8%          |
| Rushcliffe          | 22         | 18         | 31         | 72.2%         |
| <b>BGR</b>          | <b>139</b> | <b>91</b>  | <b>130</b> | <b>42.9%</b>  |
| Others              | 10         | 19         | 13         | -31.6%        |
| <b>TOTAL</b>        | <b>483</b> | <b>421</b> | <b>444</b> | <b>+5.5%</b>  |

The number of children with child protection plans has risen this year which has brought the rate per 10,000 population aged 0-18 slightly above the latest available for England as a whole. We do not yet have the comparable national figure for 2009 but the graph below shows the likely convergence.

### National Comparison



## Age and Gender of Children with Child Protection Plans

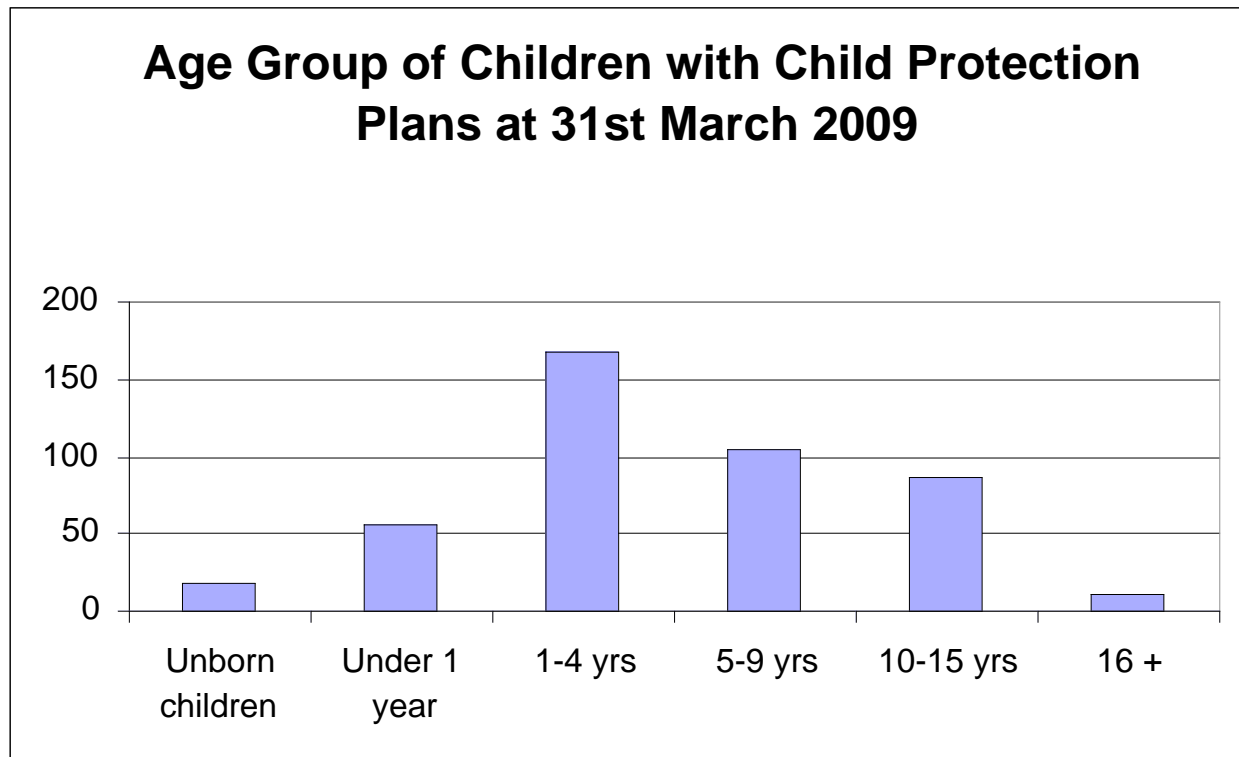
### Gender

|                   | n          | %             |
|-------------------|------------|---------------|
| Male              | 208        | 46.8          |
| Female            | 218        | 49.1          |
| Unborn/Gender n/k | 18         | 4.1           |
| <b>TOTAL</b>      | <b>444</b> | <b>100.0%</b> |

### Age Group

|                   | n          | %             |
|-------------------|------------|---------------|
| Unborn children   | 18         | 4.1           |
| Aged under 1 year | 56         | 12.6          |
| Aged 1-4 years    | 168        | 37.8          |
| Aged 5-9 years    | 104        | 23.4          |
| Aged 10-15 years  | 87         | 19.6          |
| 16 and over       | 11         | 2.5           |
| <b>TOTAL</b>      | <b>444</b> | <b>100.0%</b> |

- The age profile of children with child protection plans slightly is younger than that for 2007/08 when 55.6% were aged under five.
- The equivalent figure for 2008/09 is 54.5% with 45.5% over five years, continuing the trend to a slightly younger age profile seen in recent years.
- The largest single group is in the 1-4 year range.

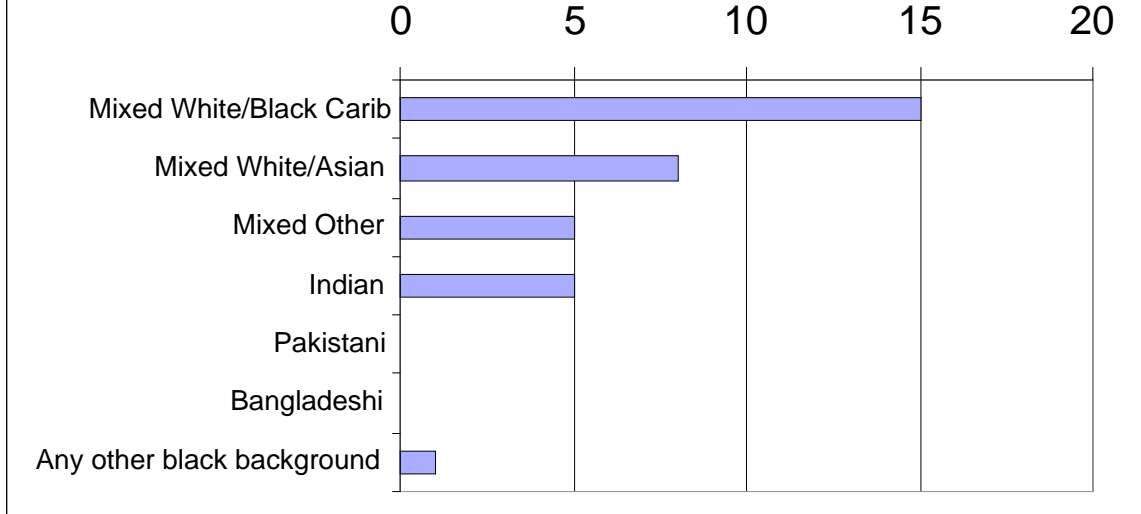


## Ethnic Origin of Children with CPP

| Ethnic Origin              | 31/03/2008 |       | 31/03/2009 |       |
|----------------------------|------------|-------|------------|-------|
|                            | n          | %     | n          | %     |
| White British              | 370        | 87.9% | 379        | 85.4% |
| White Irish                | 1          | 0.2%  | 0          | 0.0%  |
| Any other white background | 10         | 2.4%  | 1          | 0.2%  |
| White and Black Caribbean  | 2          | 0.5%  | 15         | 3.4%  |
| White and Black African    | 0          | 0.0%  | 0          | 0.0%  |
| White and Asian            | 3          | 0.7%  | 8          | 1.8%  |
| Any other mixed background | 20         | 4.8%  | 5          | 1.1%  |
| Indian                     | 1          | 0.2%  | 5          | 1.1%  |
| Pakistani                  | 3          | 0.7%  | 0          | 0.0%  |
| Bangladeshi                | 1          | 0.2%  | 0          | 0.0%  |
| Any other Asian background | 3          | 0.7%  | 0          | 0.0%  |
| Black Caribbean            | 0          | 0.0%  | 0          | 0.0%  |
| Black African              | 0          | 0.0%  | 0          | 0.0%  |
| Any other black background | 0          | 0.0%  | 1          | 0.2%  |
| Chinese                    | 0          | 0.0%  | 0          | 0.0%  |
| Any other ethnic group     | 0          | 0.0%  | 2          | 0.5%  |
| Not known/unborn           | 7          | 1.7%  | 28         | 6.3%  |

- The proportion of children on register from BME backgrounds has increased from 7.8% (2007/08) to 8.1% this year.
- This compares with 4% in the general child population of Nottinghamshire (2001 Census).
- The largest single group is those children who are recorded in the mixed white and black Caribbean ethnic origin group category.

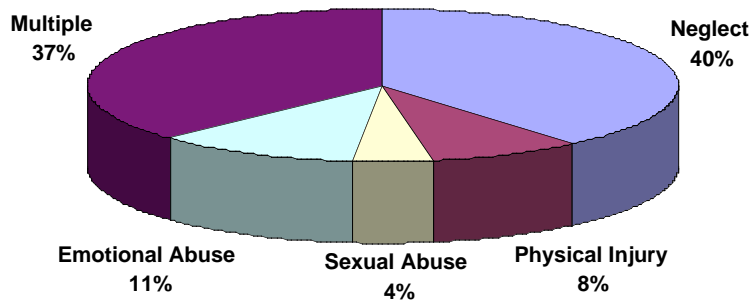
### Number of Children from Ethnic Minorities with CPP as at 31st March 2009



### Registration Category for Children on CPP as at 31st March 2009

| Registration Category | n          | %             |
|-----------------------|------------|---------------|
| Neglect               | 173        | 39.0%         |
| Physical Injury       | 37         | 8.3%          |
| Sexual Abuse          | 19         | 4.3%          |
| Emotional Abuse       | 50         | 11.3%         |
| Multiple              | 165        | 37.2%         |
| <b>TOTAL</b>          | <b>444</b> | <b>100.0%</b> |

## Registration Category - Children with CPP at 31st March 2009

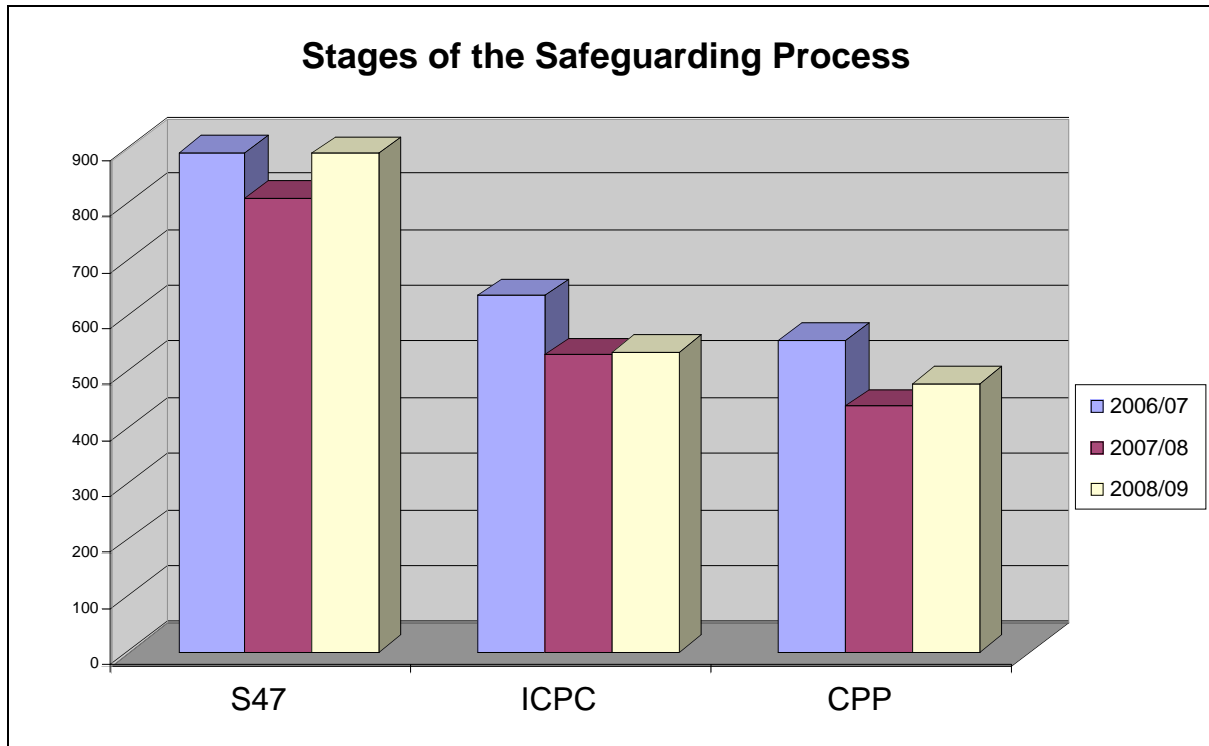


- Neglect is the largest group, followed by the multiple categories.
- Emotional abuse, which has shown increases in recent years, now occurs more frequently than both the physical injury and sexual abuse categories.
- Nottinghamshire continues to show a high proportion in the multiple category.

### Stages of the Safeguarding Process

|  | 2006/07 | 2007/08 | 2008/09 |
|--|---------|---------|---------|
| Number of children who were the subject of S.47 enquiries initiated during the year                  | 893     | 812     | 891     |
| Number of children who were the subject of Initial Child Protection Conferences held during the year | 637     | 531     | 537     |
| Number of children made subject of a child protection plan during the year                           | 558     | 440     | 479     |

The bar chart shows increased levels of activity at the different stages of the safeguarding process this year compared to 2007/08, particularly in Section 47 enquiries and children being made subject to child protection plans.



## ANNEX A

### Statistical Nearest Neighbours (SN)

Nottinghamshire  
 Derbyshire  
 Staffordshire  
 Lancashire  
 Cumbria  
 Northamptonshire  
 Swindon  
 Kent  
 Dudley  
 Wigan  
 Lincolnshire

## NSCB Business Plan 2009/10

| <b>NSCB Business Plan<br/>2009 - 2010</b>   |   |  |                                     |  |  |
|---|---|--|-------------------------------------|--|--|
| <b>NSCB Business plan - Children and Young People Plan activity</b>   |   |  |                                     |  |  |
| <b>What do we want to be different in one year's time?</b>  | <b>Action</b>   | <b>Milestone 1:</b>  | <b>Milestone 2:</b>                 | <b>Resources allocated to this work</b><br>(could be staff time, premises, or budgets allocated) | <b>Lead individual</b>   |
|   | What are the main things we need to do to make this happen?           | What will we have done by 30/09/09?  | What will we have done by 31/03/10? |  | Job title, role and organisation   |
| <u>Parents with additional needs</u><br>The Common Assessment Framework will be completed at an early stage in all relevant cases | See the separate action plan which covers integrated locality working | Agreed required outcomes for the supporting disabled parents policy review | Implemented the revised policy      | See the separate action plan which covers integrated locality working                            | Chris Jones<br>Service Head – Integrated Services<br>Nottinghamshire County Council<br>Joe Pidgeon<br>Service Head – Interagency Planning and Commissioning.<br>Nottinghamshire County Council |

**NSCB Business Plan  
2009 - 2010**

**NSCB Business plan - Children and Young People Plan activity**

| <b>What do we want to be different in one year's time?</b>  | <b>Action</b>   | <b>Milestone 1:</b>                        | <b>Milestone 2:</b>                | <b>Resources allocated to this work</b><br>(could be staff time, premises, or budgets allocated)  | <b>Lead individual</b><br>Job title, role and organisation                               |
|---|---|--|------------------------------------|---|--|
| <p>Children's and Adults Services will work together to ensure that effective and complementary services are provided</p> <p>A newly commissioned service for young carers will be in place</p> | <p>Revise the policy framework for supporting disabled parents. Ensure this work is connected to Think Family initiatives and ensures that children are safeguarded</p> <p>Commission the service</p> | <p>Tendering process will be completed</p> | <p>Commissioned the new scheme</p> | <p>Staff time: from NSCB partner organisations</p> <p>£267,000 p.a. allocated for the scheme plus staff time to commission and manage the service</p> | <p>Derek Higton<br/>Service Head – Youth Services<br/>Nottinghamshire County Council</p> |

**NSCB Business Plan  
2009 - 2010**

**NSCB Business plan - Children and Young People Plan activity**

| <b>What do we want to be different in one year's time?</b>  | <b>Action</b>  | <b>Milestone 1:</b>  | <b>Milestone 2:</b>  | <b>Resources allocated to this work</b><br>(could be staff time, premises, or budgets allocated)          | <b>Lead individual</b><br>Job title, role and organisation   |
|---|--|--|--|---|--|
| <p><u>The Impact of Domestic Violence</u></p> <p>Stronger coordination of response from statutory and voluntary agencies</p> <p>The multiagency risk assessment tool will be in use across agencies to identify those most at risk.</p> | <p>Workers from Women's Aid will be based in every Children's Social Care duty point.</p> <p>Further training to support the use of the inter-agency Domestic Violence</p> | <p>Development in place countywide</p> <p>Content of the training agreed</p> | <p>Increased access to specialist domestic violence services for children and families</p> <p>Training delivered and evaluated</p> | <p>Staff time: NSCB partner organisations</p> <p>Staff time: NSCB officers and partner organisations.</p> | <p>Rachel Adams<br/>Domestic Violence Policy Officer<br/>Nottinghamshire County Council</p> <p>Joe Foley<br/>NSCB Manager<br/>Nottinghamshire County Council</p> |

**NSCB Business Plan  
2009 - 2010**

**NSCB Business plan - Children and Young People Plan activity**

| <b>What do we want to be different in one year's time?</b>  | <b>Action</b><br>What are the main things we need to do to make this happen?                                  | <b>Milestone 1:</b><br>What will we have done by 30/09/09?                            | <b>Milestone 2:</b><br>What will we have done by 31/03/10?                                      | <b>Resources allocated to this work</b><br>(could be staff time, premises, or budgets allocated) | <b>Lead individual</b><br>Job title, role and organisation  |
|---|---|---|---|--|---|
|   | Practice Guidance will be delivered<br><br>The impact of the practice guidance and training will be evaluated | Reviewed the implementation of the guidance   | Revised the guidance if required  |  |   |
| <u>Missing Children</u><br><br>Services for missing children or those at risk of going missing will have been further developed | Increase the availability of preventative services for children who are felt to be at risk of going missing   | Implemented a pilot for preventative services<br><br>Developed draft revised guidance | Undertaken an interim evaluation of the impact of the pilot<br><br>Implemented revised guidance | £30,000 allocated to the pilot plus staff time to commission and manage the pilot                | Emma Adams<br>Missing Persons Lead<br>Nottinghamshire Police<br><br>Clive Chambers<br>Safeguarding Children Project Manager<br>Nottinghamshire County Council |

**NSCB Business Plan  
2009 - 2010**

**NSCB Business plan - Children and Young People Plan activity**

| <b>What do we want to be different in one year's time?</b> | <b>Action</b>  | <b>Milestone 1:</b>   | <b>Milestone 2:</b>   | <b>Resources allocated to this work</b><br>(could be staff time, premises, or budgets allocated)                              | <b>Lead individual</b><br>Job title, role and organisation |
|--|--|---|---|---|--|
|  | <p>The inter-agency Missing Children practice guidance will be revised and training delivered</p> <p>Children who are reported as missing on 2 or more occasions will be interviewed when they return to identify how best to stop them going missing again.</p> | <p>Reviewed the pilot process for commissioning return interviews</p> | <p>Revised the process based on the review and delivered training to support this</p> | <p>Staff time:<br/>NSCB officers and partner organisations</p> <p>Staff time:<br/>NSCB officers and partner organisations</p> |  |

**NSCB Business Plan  
2009 - 2010**

**NSCB Business plan - Children and Young People Plan activity**

| <b>What do we want to be different in one year's time?</b>  | <b>Action</b><br>What are the main things we need to do to make this happen?   | <b>Milestone 1:</b><br>What will we have done by 30/09/09?  | <b>Milestone 2:</b><br>What will we have done by 31/03/10?   | <b>Resources allocated to this work</b><br>(could be staff time, premises, or budgets allocated)   | <b>Lead individual</b><br>Job title, role and organisation   |
|---|--|---|--|--|--|
| <p><b>Bullying</b></p> <p>The number of accredited peer mentoring schemes within schools will have increased</p> <p>Strategies to address bullying outside of schools will be in place</p> <p>Risks to children from cyberbullying will have been reduced</p> | <p>Further accredited peer mentoring schemes will be developed in partnership with Youth Services</p> <p>The anti-bullying policy will be promoted through Joint Access Teams to ensure that all agencies are engaged in work to address</p> | <p>Held an event to engage a wider range of schools in peer mentoring</p> <p>Reviewed the pilot for working with Joint Access Teams</p> <p>Practice Guidance will be agreed</p> | <p>Increased the number of accredited peer mentoring schemes</p> <p>Revised the process based on the review and implemented across the county</p> <p>Practice guidance will be implemented</p> | <p>Staff time:<br/>NSCB partner organisations</p> <p>Staff time:<br/>NSCB officers and partner organisations</p> <p>Staff time:<br/>NSCB</p> | <p>Lorna Naylor<br/>Anti-Bullying Coordinator<br/>Nottinghamshire County Council</p> <p>Clive Chambers<br/>Safeguarding Children Project Manager<br/>Nottinghamshire County Council</p> <p>Lorna Naylor<br/>Anti-Bullying Coordinator<br/>Nottinghamshire County Council</p> |

**NSCB Business Plan  
2009 - 2010**

NSCB Business plan - Children and Young People Plan activity

| <b>What do we want to be different in one year's time?</b> | <b>Action</b><br>What are the main things we need to do to make this happen?  | <b>Milestone 1:</b><br>What will we have done by 30/09/09? | <b>Milestone 2:</b><br>What will we have done by 31/03/10? | <b>Resources allocated to this work</b><br>(could be staff time, premises, or budgets allocated) | <b>Lead individual</b><br>Job title, role and organisation |
|--|---|--|--|--|--|
|  | <p>bullying.</p> <p>Inter-agency E-safety Practice Guidance will be published. Training will be delivered to support the implementation of this guidance.</p> |  | <p>across the county, supported by training</p>            | <p>officers and partner organisations</p>  |  |

**NSCB Business Plan  
2009 - 2010**

**NSCB Business plan - Children and Young People Plan activity**

| <b>What do we want to be different in one year's time?</b>  | <b>Action</b><br>What are the main things we need to do to make this happen?   | <b>Milestone 1:</b><br>What will we have done by 30/09/09?   | <b>Milestone 2:</b><br>What will we have done by 31/03/10?   | <b>Resources allocated to this work</b><br>(could be staff time, premises, or budgets allocated)                              | <b>Lead individual</b><br>Job title, role and organisation   |
|---|--|--|--|---|--|
| <p><b>Children Living away from home</b></p> <p>Awareness of private fostering will be higher</p> <p>All children who go missing from local authority care will have a return interview conducted by someone independent of the</p> | <p>Inter-agency practice guidance in relation to Private Fostering will be published. This will include measures to raise awareness across agencies and the wider public about Private Fostering</p> <p>Revise the</p> | <p>Practice Guidance will have been agreed</p> <p>Revised the Missing from care interagency protocol</p> <p>Content of training will have been</p> | <p>Practice guidance will be implemented across the county, supported by training</p> <p>Evaluated the impact of the revised protocol</p> <p>Training will have been delivered</p> | <p>Staff time:<br/>NSCB officers and partner organisations</p> <p>Staff time:<br/>NSCB officers and partner organisations</p> | <p>Clive Chambers<br/>Safeguarding Children Project Manager<br/>Nottinghamshire County Council</p> |

**NSCB Business Plan  
2009 - 2010**

**NSCB Business plan - Children and Young People Plan activity**

| <b>What do we want to be different in one year's time?</b> | <b>Action</b><br>What are the main things we need to do to make this happen?  | <b>Milestone 1:</b><br>What will we have done by 30/09/09? | <b>Milestone 2:</b><br>What will we have done by 31/03/10? | <b>Resources allocated to this work</b><br>(could be staff time, premises, or budgets allocated) | <b>Lead individual</b><br>Job title, role and organisation |
|--|---|--|--|--|--|
| independent of the placement                               | interagency Missing from care protocol.<br><br>Deliver training to Children's Social Care staff and foster carers to ensure that they are understand their responsibilities | agreed   |  |  |  |

**NSCB Business Plan  
2009 - 2010**

**NSCB Business plan - Children and Young People Plan activity**

| <b>What do we want to be different in one year's time?</b>  | <b>Action</b><br>What are the main things we need to do to make this happen?   | <b>Milestone 1:</b><br>What will we have done by 30/09/09?   | <b>Milestone 2:</b><br>What will we have done by 31/03/10?                                    | <b>Resources allocated to this work</b><br>(could be staff time, premises, or budgets allocated)                              | <b>Lead individual</b><br>Job title, role and organisation   |
|---|--|--|---|---|--|
| <p><u>Children who are the subject of a protection plan</u><br/>Specific work to measure outcomes for children and young people involved in child protection processes will be embedded in practice</p> <p>Reduction in the number of children subject to a repeat child protection plan or a plan that remains in place for over 2 years</p> | <p>A process for obtaining feedback from children and young people who are subject to a protection plan about the effectiveness of work undertaken to protect them will be implemented</p> <p>All circumstances in which</p> | <p>Reviewed the pilot process for obtaining this information and revised as necessary</p> <p>Reviewed the impact of action taken</p> | <p>Actions in response to feedback implemented</p> <p>Reviewed the impact of action taken</p> | <p>Staff time:<br/>NSCB officers and partner organisations</p> <p>Staff time:<br/>NSCB officers and partner organisations</p> | <p>Jane O Daly<br/>NSCB Development Manager<br/>Nottinghamshire County Council</p> <p>Pam Rosseter<br/>Service Head – Safeguarding and Independent Review<br/>Nottinghamshire County Council</p> |

**NSCB Business Plan  
2009 - 2010**

NSCB Business plan - Children and Young People Plan activity

| <b>What do we want to be different in one year's time?</b>  | <b>Action</b>  | <b>Milestone 1:</b>                                | <b>Milestone 2:</b>   | <b>Resources allocated to this work</b><br>(could be staff time, premises, or budgets allocated) | <b>Lead individual</b><br>Job title, role and organisation                |
|---|--|--|---|--|---|
|   | children are subject to a plan on 2 or more occasions, or remain the subject of a plan for 18 months or more, will be reviewed |  |   |  |   |
| <p><u>Preventable child deaths</u></p> <p>Factors associated with potentially preventable/preventable child deaths will be identified and strategies developed in response to these</p> | Continued multiagency analysis of all child deaths via the Child Death Overview Panel  | Identified themes from review of individual deaths | Taken identified actions aimed at reducing potentially preventable/preventable child deaths | Staff time:<br>NSCB officers and partner organisations   | Jane O Daly<br>NSCB Development Manager<br>Nottinghamshire County Council |

**NSCB Business Plan  
2009 - 2010**

**NSCB Business plan - Children and Young People Plan activity**

| <b>What do we want to be different in one year's time?</b> | <b>Action</b><br>What are the main things we need to do to make this happen? | <b>Milestone 1:</b><br>What will we have done by 30/09/09? | <b>Milestone 2:</b><br>What will we have done by 31/03/10? | <b>Resources allocated to this work</b><br>(could be staff time, premises, or budgets allocated) | <b>Lead individual</b><br>Job title, role and organisation |
|--|--|--|--|--|--|
|  |  |  |  |  |  |

**NSCB Business Plan  
2009 - 2010**

NSCB Business plan - non Children and Young People Plan activity

| <b>What do we want to be different in one year's time?</b>  | <b>Action</b><br>What are the main things we need to do to make this happen?   | <b>Milestone 1:</b><br>What will we have done by 30/09/09? | <b>Milestone 2:</b><br>What will we have done by 31/03/10?  | <b>Resources allocated to this work</b> (could be staff time, premises, or budgets allocated) | <b>Lead individual</b><br>Job title, role and organisation                           |
|---|--|--|---|---|--|
| The NSCB effectively contributes to and scrutinizes the effectiveness of the Children and Young People's Partnership Board  | A framework for governance and scrutiny arrangements agreed.<br><br>Overseeing and challenging progress against agreed safeguarding indicators | Framework in place.  | All relevant performance information considered and challenged as appropriate. Actions identified | Staff time: NSCB Officers and partner agencies  | Joe Foley<br>NSCB Manager/<br>NSCB Chair   |
| The NSCB scrutinises the effectiveness of Nottinghamshire Multi-agency Public Protection Arrangements (MAPPA) in relation to safeguarding children and young people | The NSCB receives reports of the performance of MAPPA against agreed local indicators  | Framework agreed   | Evidence consideration of performance information and challenge to MAPPA as appropriate           | Staff time: NSCB Officers and partner agencies  | Joe Foley<br>NSCB Manager<br><br>Ian Williamson<br>MAPPA strategy and policy officer |

**NSCB Business Plan  
2009 - 2010**

NSCB Business plan - non Children and Young People Plan activity

| <b>What do we want to be different in one year's time?</b>  | <b>Action</b><br>What are the main things we need to do to make this happen?  | <b>Milestone 1:</b><br>What will we have done by 30/09/09?                  | <b>Milestone 2:</b><br>What will we have done by 31/03/10?  | <b>Resources allocated to this work</b> (could be staff time, premises, or budgets allocated) | <b>Lead individual</b><br>Job title, role and organisation |
|---|---|---|---|---|--|
| Ensure all partners have in place effective arrangements to safeguard and promote the welfare of children (S11).                        | Annual self assessment completed by partner agencies and actions identified where necessary.                                      | Events for Voluntary organisations and District Councils held               | Self assessments completed. Considered by the Board and actions agreed.                                 | Staff time: NSCB Officers and partner agencies  | Joe Foley<br>NSCB Manager                                  |
| High quality serious case reviews are completed in line with national guidance.<br><br>Lessons learned will result in improved practice | Production of a 'Toolkit' and training to assist those involved in the process.<br><br>SCR Impact assessment framework developed. | Toolkit produced and disseminated<br><br>Impact assessment framework agreed | Further training delivered.<br><br>Evaluation of impact will be carried as appropriate to timing of SCR | Staff time: NSCB Officers and partner agencies  | Jane O'Daly<br>NSCB Development Manager                    |

**NSCB Business Plan  
2009 - 2010**

NSCB Business plan - non Children and Young People Plan activity

| <b>What do we want to be different in one year's time?</b>               | <b>Action</b><br>What are the main things we need to do to make this happen?  | <b>Milestone 1:</b><br>What will we have done by 30/09/09?                    | <b>Milestone 2:</b><br>What will we have done by 31/03/10?  | <b>Resources allocated to this work</b> (could be staff time, premises, or budgets allocated) | <b>Lead individual</b><br>Job title, role and organisation                                |
|--|---|---|---|---|---|
| Promote and embed Safer Working Practices                                | Board Partner agencies to have undertaken a self assessment of performance in relation to both safer recruitment and managing allegations against people who work with children | Self assessments completed and evaluated                                      | Action plan responding to the key issues from the self assessment agreed by the Board<br><br>Further training delivered | Staff time: NSCB Officers and partner agencies  | Clive Chambers<br>Safeguarding Children Project Manager<br>Nottinghamshire County Council |
| Improved engagement across partner agencies and with the wider community | The Board will continue to communicate and engage with partners, including the public, using a variety of media.  | Reviewed and updated the NSCB website.<br><br>Published quarterly newsletters | Held at least one public safeguarding campaign.<br><br>Produced a public 'staying safe' booklet                         | Staff time: NSCB Officers and partner agencies. NSCB budget                                   | Joe Foley<br>NSCB Manager<br><br>Jane O'Daly<br>NSCB Development Manager                  |

**NSCB Business Plan  
2009 - 2010**

NSCB Business plan - non Children and Young People Plan activity

| <b>What do we want to be different in one year's time?</b>  | <b>Action</b><br>What are the main things we need to do to make this happen?                        | <b>Milestone 1:</b><br>What will we have done by 30/09/09?                           | <b>Milestone 2:</b><br>What will we have done by 31/03/10?   | <b>Resources allocated to this work</b> (could be staff time, premises, or budgets allocated) | <b>Lead individual</b><br>Job title, role and organisation |
|---|---|--|--|---|--|
| Evidence of children and young people's involvement in the work of the NSCB   | A participation task and finish group will draw up specific proposals                               | Proposals considered by the Board and action plan agreed.                            | Evidence involvement of C&YP in NSCB work.<br><br>Action plan in response to proposals implimented | Staff time: NSCB Officers and partner agencies.<br><br>NSCB budget                            | Jane O'Daly<br>NSCB Development Manager                    |
| Improved multi agency response to :<br><br><ul style="list-style-type: none"> <li>• Children and young people who self harm</li> <li>• Child sexual exploitation</li> <li>• Children from abroad</li> </ul> | Practice guidance produced and subject addressed in training.<br><br>Impact assessment model agreed | Guidance drafted .<br><br>Training reviewed to ensure subjects appropriately covered | All guidance disseminated.<br><br>Evaluation framework agreed and progressed                       | Staff time: NSCB Officers and partner agencies  | Joe Foley<br>NSCB Manager                                  |

**NSCB Business Plan  
2009 - 2010**

NSCB Business plan - non Children and Young People Plan activity

| <b>What do we want to be different in one year's time?</b>   | <b>Action</b>  | <b>Milestone 1:</b>   | <b>Milestone 2:</b>  | <b>Resources allocated to this work</b> (could be staff time, premises, or budgets allocated)          | <b>Lead individual</b>   |
|--|--|---|--|--|--|
| Reduction in the number of children and young people who perpetrate or are the victims of crime or fear crime                                    | The NSCB will monitor performance against this priority within the Children and Young People's Plan        | Received a progress report and made recommendations for action as appropriate.<br><br>Monitored quarterly figures where available | End of year consideration will be given when final figures are available | This area of work will be led by the Youth Offending Service/ Police and Safer Communities partnership | Laurence Jones<br>Service Head – Youth Offending Service<br>Nottinghamshire County Council |
| There is a reduction in the number of hospital admissions caused by unintentional or deliberate injuries to children and young people (Under 15) | Continue to deliver countywide home safety equipment scheme.<br><br>Hold a consultation event for partners | Safety equipment will have been fitted for 500 families   | Safety equipment will have been fitted for 1028 families                 | Officer time (half day per week).<br><br>£ 92,000 (NCC and other grant funded)                         | Cathy Harvey<br>Healthier communities, NCC.  |

**NSCB Business Plan  
2009 - 2010**

NSCB Business plan - non Children and Young People Plan activity

| <b>What do we want to be different in one year's time?</b>  | <b>Action</b><br>What are the main things we need to do to make this happen?  | <b>Milestone 1:</b><br>What will we have done by 30/09/09?   | <b>Milestone 2:</b><br>What will we have done by 31/03/10?   | <b>Resources allocated to this work</b> (could be staff time, premises, or budgets allocated) | <b>Lead individual</b><br>Job title, role and organisation                             |
|---|---|--|--|---|--|
| The number of children killed or seriously injured in road traffic accidents is reduced in line with national targets | Sustained investment in road safety engineering improvements<br><br>Continue to provide Education and training in schools | Progress will have been made on the programme of engineering improvements. Education and training programme for schools underway | Programme of engineering works and education and training completed.<br><br>National target will be met. | Partner organisation staff time.<br><br>NCC Road safety budget                                | Neil Woodcock<br>Head of Service for Highways Safety, NCC/<br>Road Safety Partnership. |