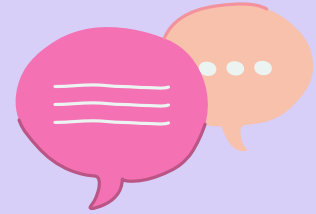


# Our plan for improving SEND services in Nottinghamshire

**£400K**



in education psychology service so more young people's needs can be assessed



Finding new ways to listen to children, young people and families

Review our education, health and care plan processes so more young people's needs can be assessed and annual reviews completed on time



Independent support from external SEND leaders



Working more with schools and giving them extra money for SEND



Learning from other areas and using their good practice

**SEND partnership**  
Right support, right place,  
right time



Reducing delays and gaps in health services, including speech and language therapy, neuro-developmental pathways and equipment services