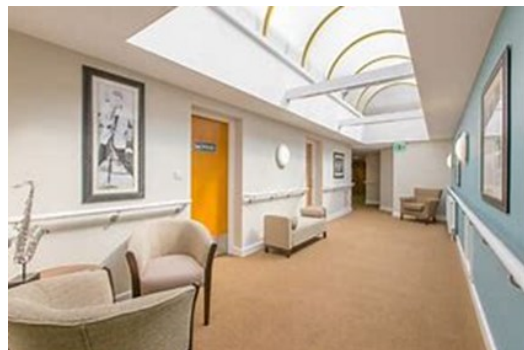


St Andrews House

Housing with Care

St Andrews House is a purpose-built housing development for older people who want to continue to live independently and who may have care and support needs now or in the future or who have a need for housing which will meet their changing health needs. It is set in a residential area on Digby Avenue in Gedling with a good bus route and shops nearby.



There are 32 spacious and accessible one or two-bedroom flats which are designed to meet people's needs with level access showers, wheelchair turning circles and accessible kitchens. A lifeline call system is provided in every flat which gives residents the reassurance of being able to seek assistance if needed. There is lift access to upper floors.



The communal areas benefit from:

- a lounge and dining area
- a catering kitchen to provide lunches for all residents
- rooms designated for activities
- communal gardens
- guest room enabling visiting family and friends to stay overnight
- fully equipped launderette
- scooter storage room

The onsite housing team will provide housing related advice and support to all residents.

Of the 32 flats, 15 are Housing with Care flats which are for people who have been assessed as having care and support needs and the remaining 17 flats are for people without assessed daily care needs.

Housing with Care

Housing with Care is a housing option which allows older people to live as independently as possible with the reassurance of support with personal care on site as needed. It is sometimes called Extra Care.

People living in these flats have care and support provided by a care team that is on site 24 hours a day, 7 days a week. This service is arranged by Nottinghamshire County Council for people who meet the criteria for Housing with Care.

To be considered for one of the Housing with Care flats, you will need to be assessed by Nottinghamshire County Council as being eligible for social care support and have an identified need for accommodation that meets your care and support needs now or in the future. Your savings and investments must be below the threshold of £23,250.

You will also need to apply to Jigsaw Homes Midlands for a tenancy.

How much does Housing with Care cost?

There are three parts to the cost of living in a Housing with Care flat:

- **Housing** – the cost of buying, renting or shared ownership of your home. This is payable directly to Jigsaw Homes.
- **Service charge** – for home maintenance and communal facilities. This is payable directly to Jigsaw Homes.
- **Care and support costs** – the amount you need to contribute to the cost of care will depend on your financial circumstances. This is payable to Nottinghamshire County Council who will complete a financial assessment to work out exactly how much you can afford to pay

Further information about paying for care is available on the Nottinghamshire County Council website here: <http://www.nottinghamshire.gov.uk/care/adult-social-care/paying-for-care>

To speak to someone about Housing with Care, or to arrange for an assessment, please contact Nottinghamshire County Council on 0300 500 80 80.

If you would like to know more about St Andrew's House, or would like to express an interest in renting one of the general flats please contact:

Phone: 0115 905 1515 or 0115 969 1332

Email: Midlands.jigsawhomes.org.uk

Website: [St Andrew's House - Extra Care Living - Jigsaw Midlands \(jigsawhomes.org.uk\)](http://www.jigsawhomes.org.uk)

Phone 0300 500 80 80 if you need the information in a different language or format.

"The Council is committed to protecting your privacy and ensuring all personal information is kept confidential and safe. For more details see our general and service specific privacy notices at: <https://www.nottinghamshire.gov.uk/global-content/privacy>"