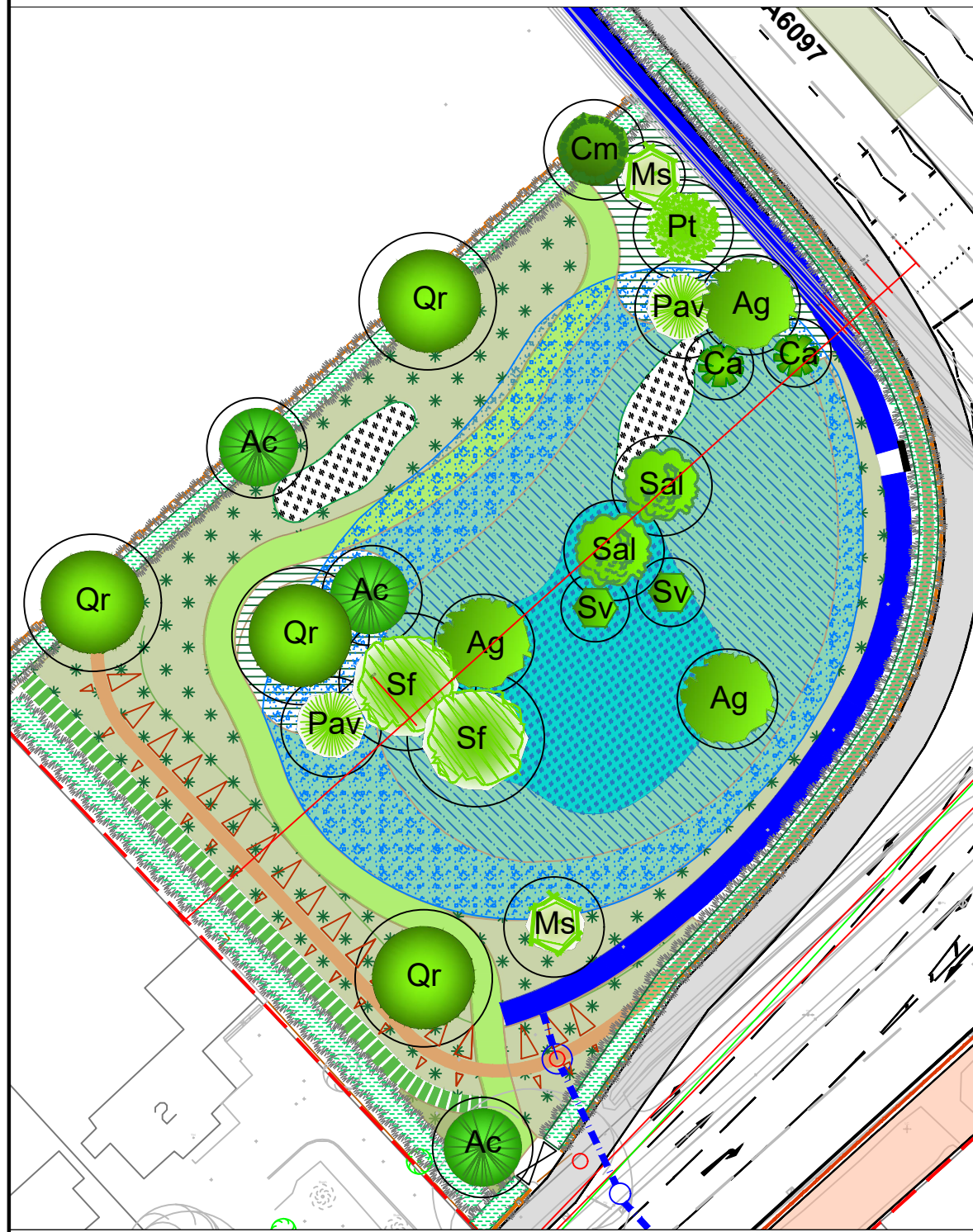




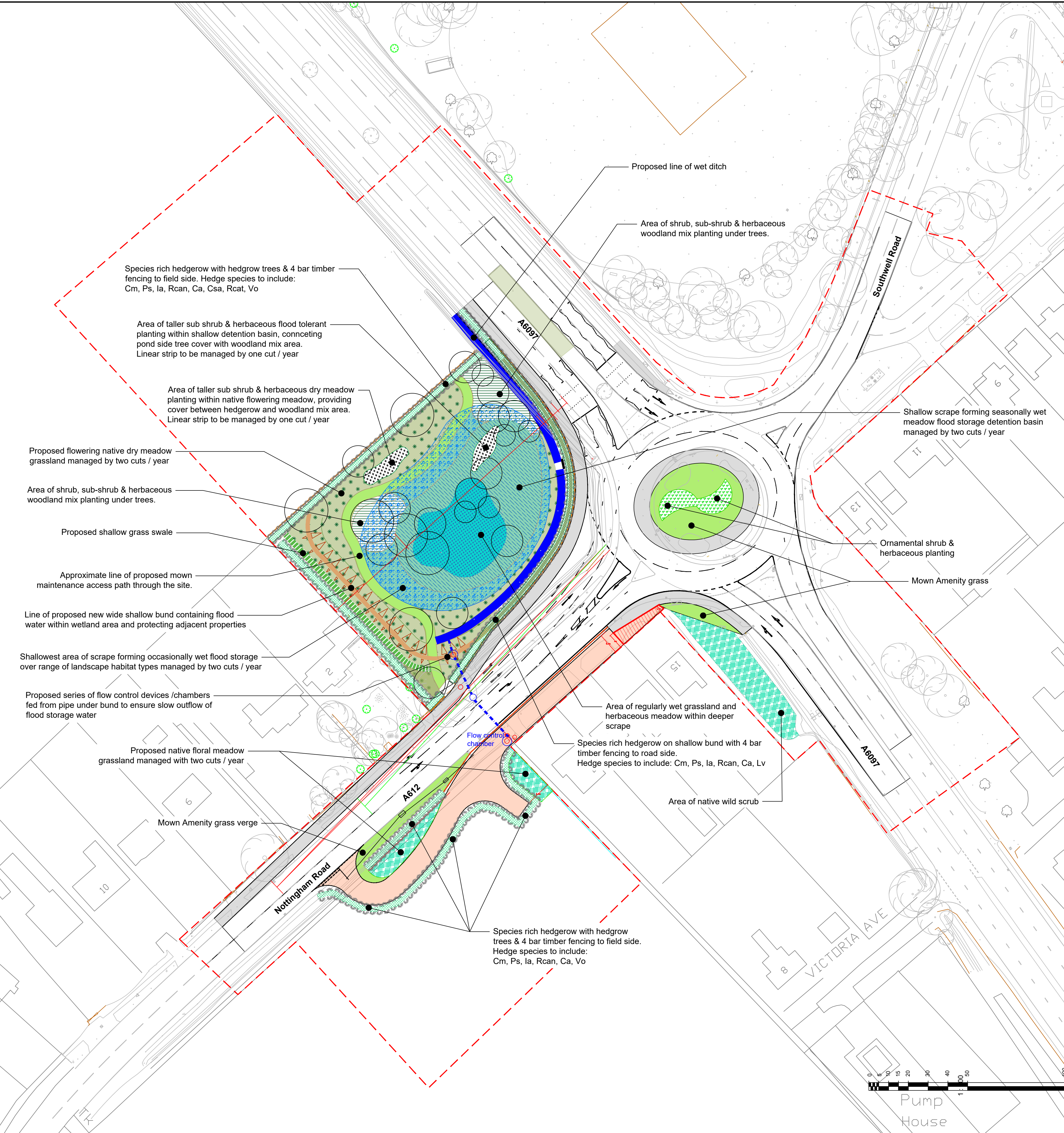
Hedge mix

Ca	Corylus avellana	Common Hazel	8%
Cm	Crataegus monogyna	Hawthorn	35%
Csa	Cornus sanguinea	Dogwood	5%
la	Ilex aquifolium	Holly	10%
Lv	Ligustrum vulgare	Privet (wild)	4%
Psp	Prunus spinosa	Blackthorn	20%
Rcan	Rosa canina	Dog Rose	10%
Rcat	Rhamnus cathartica	Buckthorn	4%
Vo	Viburnum opulus	Wayfaring Tree	4%



Tree Species

Ac	Ac	Acer campestre	Field Maple
Ag	Ag	Alnus glutinosa	Common Alder
Cm	Cm	Crataegus monogyna	Hawthorn
Ca	Ca	Corylus avellana	Common Hazel
la	la	Ilex aquifolium	Holly
Ms	Ms	Malus sylvestris	Crab Apple
Pav	Pav	Prunus avium	Wild Cherry
Pt	Pt	Populus tremula	Aspen
Psp	Psp	Prunus spinosa	Blackthorn
Qr	Qr	Quercus robur	English Oak
Sal	Sal	Salix alba	White Willow
Sf	Sf	Salix fragilis	Crack Willow
Sv	Sv	Salix viminalis	Osier



Key

[Green hatched pattern]	Area of shrub, sub-shrub & herbaceous woodland mix planting under trees.
[Green dotted pattern]	Proposed flowering native dry meadow grassland managed by two cuts/year
[Light green solid]	Proposed area of amenity grassland to road frontage
[Blue hatched pattern]	Proposed native/floral meadow grassland with two cuts a year
[Green dotted pattern]	Ornamental shrub and herbaceous planting
[Light green solid]	Reinstated wildflower verge to match existing
[Blue hatched pattern]	Shallowest scrape, occasionally wet flood storage area over various habitat types
[Light blue hatched pattern]	Shallow scrape seasonally wet meadow flood storage detention basin
[Dark blue hatched pattern]	Regularly wet scrape of native grassland & herbaceous meadow
[Green dotted pattern]	Proposed area of taller sub shrub & herbaceous wet / dry native meadow planting
[Green dashed line]	Proposed new species rich hedgerow
[Green dashed line]	Proposed shallow grass swale
[Orange solid]	Proposed shallow bund
[Blue dashed line]	Proposed line of wet ditch
[Orange dashed line]	Proposed Timber 4 bar fencing.
[Circle with crosshair]	Flow control chamber
[Blue dashed line]	Out flow pipes to culvert

- NOTES**
1. This drawing is to be read in conjunction with all other relevant drawings, details and specifications.
 2. Do not scale from this drawing.
 3. All measurements are given in metres unless otherwise stated.

B	Minor adjustment of land take	MTE	SI	MTE	25/02/2022
A	Minor drainage amends updated	MTE	DC	MTE	27/01/2022
Rev.	Description	Drawn	Ch'kd	Auth	Date

**A614/A6097
CORRIDOR IMPROVEMENTS
LOWDHAM ROUNDABOUT**

Status: For Planning
Project No: 20949

Lowdham
Landscape Design proposals

Scale	Drawn	M.E.	Date	Oct 21
1:500 @A1	Ch'kd	M.T.E.	Date	8/12/21
	Auth	M.T.E.	Traced	KH

Drawing No: 20949/GEN/L006/00002
Rev: B

via in partnership with
Nottinghamshire County Council

www.viaem.co.uk Tel 0115 804 2100
Bilthorpe Depot, Bilthorpe Business Park, Bilthorpe, Nottinghamshire, NG22 8ST

© Via East Midlands Limited Registered in England no.09903246

