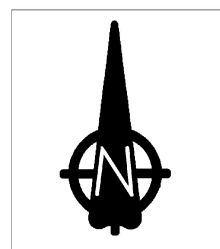


# BETTER BROADBAND FOR NOTTINGHAMSHIRE (BBfN) CONTRACTS 1 & 2 (INCLUDING COMMERCIAL ROLLOUT) BASSETLAW DISTRICT



Superfast Broadband coverage

- less than 50% coverage
- 50-90% coverage
- 91% + coverage

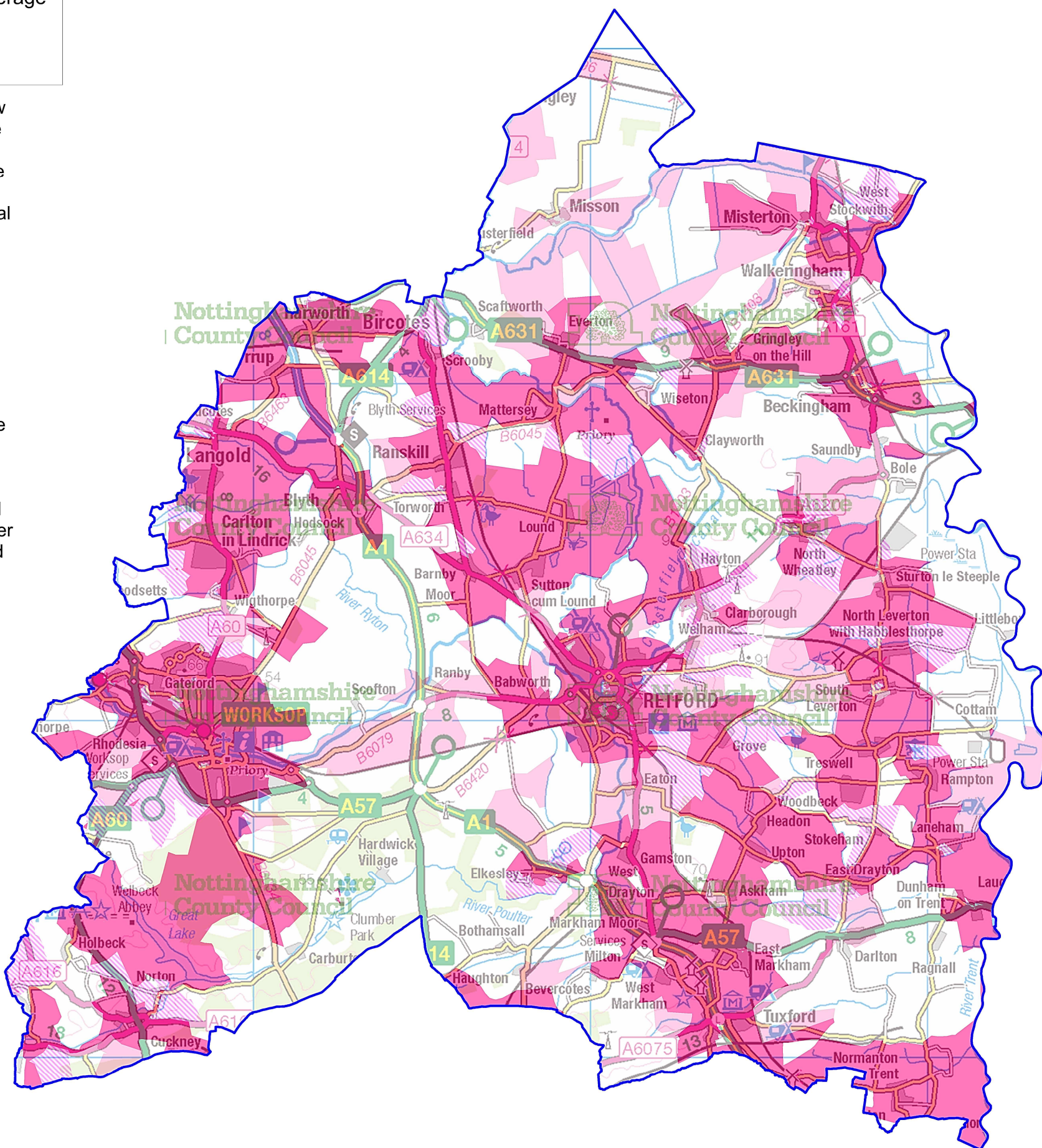
This map shows an overview of the expected rollout of the Better Broadband for Nottinghamshire Programme covering Contracts 1 and 2 and also includes commercial coverage.

In some instances, further detailed survey work needs to be carried out before confirmation of when the services will be available.

Residents and businesses checking the website will see further properties/postcodes added in the districts of Bassetlaw and Newark & Sherwood, when the second stage of the rollout plan under contract 2 has been finalised in July 2015.

A limited number of premises may not receive fibre broadband at all due to technical difficulties in reaching the area, while others will be served through commercial rollout plans and existing fibre infrastructure.

Please note that even when an area has been highlighted for service improvements, unexpected delays may be uncovered as work begins. As soon as we are aware of any delays relating to the BBfN programme, we will post an alert on our website, explain the reason(s) and give a revised date as soon as we can.



To find out more information about a specific postcode, please visit the checker available on our website at: [www.nottinghamshire.gov.uk/broadband](http://www.nottinghamshire.gov.uk/broadband)

### Information for broadband suppliers

Broadband service providers can find out more about the new and extended broadband network by registering as a Communications Provider with [www.openreach.co.uk](http://www.openreach.co.uk)

**NETWORK BUILD PERIOD: 2014 TO 2018**

Crown Copyright. All rights reserved. Nottinghamshire County Council 100019713 May 2015