

17 July 2015

Agenda Item: 10

**Children's Trust Board Sponsor: Derek Higton, Acting Corporate
Director for Children, Families and Cultural Services**

Review of Nottinghamshire's Children's Trust 2015

Purpose of the Report

1. To outline the proposed review of the Nottinghamshire's Children's Trust for agreement by the Children's Trust Board.

Background information

2. Nottinghamshire Children's Trust is a partnership of organisations that provide services to children, young people and families in Nottinghamshire. It was established to meet the requirements of the Children Act 2004, which identifies a number of 'relevant partners'. Under this Act, the County Council is the lead partner with statutory responsibility to make arrangements to promote cooperation to improve children's wellbeing.
3. Nottinghamshire's Children, Young People and Families (CYPF) Plan 2014-16 is the single overarching strategic plan covering services for children and young people in Nottinghamshire, as represented by partners to the Children's Trust. The Plan was approved by the County Council in March 2014.
4. The last review of the Nottinghamshire's Children's Trust took place during 2012, with the outcomes agreed by the Children's Trust Board and the County Council's Children and Young People's Committee in January 2013.
5. The review undertaken during 2012 recommended the following changes to the Children's Trust:
 - To change the name of the Children's Trust Executive to the Children's Trust Board
 - To amend the purpose and responsibilities of the Children's Trust to reflect the Children's Trust Board as a commissioning group and to clarify its relationship with the Nottinghamshire Health and Wellbeing Board
 - To align the CYPF Plan with the Nottinghamshire Health and Wellbeing Strategy

- To rationalise Board members to reflect its commissioning function and to recognise that one representative may represent a number of organisations
 - To revise the sub-groups reporting to the Children's Trust. The current reporting arrangements are available in **Appendix A**.
6. These changes were subsequently included in the revised terms of reference for the Children's Trust Board for 2013-2014. There have been no further changes to the Children's Trust since the 2012 review.

Purpose of the proposed review in 2015

7. It has been three years since the last review of the Children's Trust and with the landscape of children's services continuing to change it would be judicious to establish whether or not the Children's Trust, through the governance arrangements, is effectively delivering its responsibilities.

Areas to be covered by the review

8. It is proposed the following areas of the Children's Trust should be covered by the review:
- The **purpose** of the Nottinghamshire Children's Trust including its relationship with the Health and Wellbeing Board
 - The **principles** which underpin the work of the Trust and the membership of the Children's Trust Board
 - The **scope** and **responsibilities** of the Children's Trust.
 - The effectiveness of the **performance management** of the CYPF Plan and its annual delivery plans undertaken by the Children's Trust
 - The **consultation** arrangements of the Children's Trust Board with children, young people and families
 - How effectively the Children's Trust **communicates** with the wider partnership and its workforce?

How will the review be undertaken?

9. A questionnaire will be distributed before the end of July 2015 to all Children's Trust Board members. **Appendix B** provides an example of the questionnaire.
10. The questionnaire will then be followed up with one to one interviews with all Board Members undertaken by the Senior Practitioner for Strategy and Planning.
11. In addition a one to one interview will also take place with the following individuals:

- The Associate Director for Public Health regarding the Children’s Trust and its relationship with the Health and Wellbeing Board / Strategy
- The Group Manager for Adolescence & Early Help Locality Services regarding the Children’s Trust’s Participation Strategy and its impact on the engagement of children, young people and families in the business of the Trust
- The Group Manager for Childhood & Early Help Locality Services to consider the future links between the Children’s Trust and the Children and Young People Locality Management Groups
- Other individuals identified through the review process.

12. The Senior Practitioner for Strategy and Planning will also undertake a review of the Children’s Trust arrangements in other local authorities.

13. The draft report with recommendations will be presented to the Children’s Trust Board at its meeting on Thursday 8 October 2015. Any changes to the Board’s Terms of Reference will be implemented from 2016-2017.

14. The outcomes of the review will be used to inform the process for the development of the next CYPF Plan.

RECOMMENDATION

- 1) The Nottinghamshire Children’s Trust Board approves the proposed outline of the review of the Board

Chris Jones
Senior Practitioner, Strategy and Planning

For any enquiries about this report please contact:

Chris Jones

Christopher.1.jones@nottscc.gov.uk



Background Papers

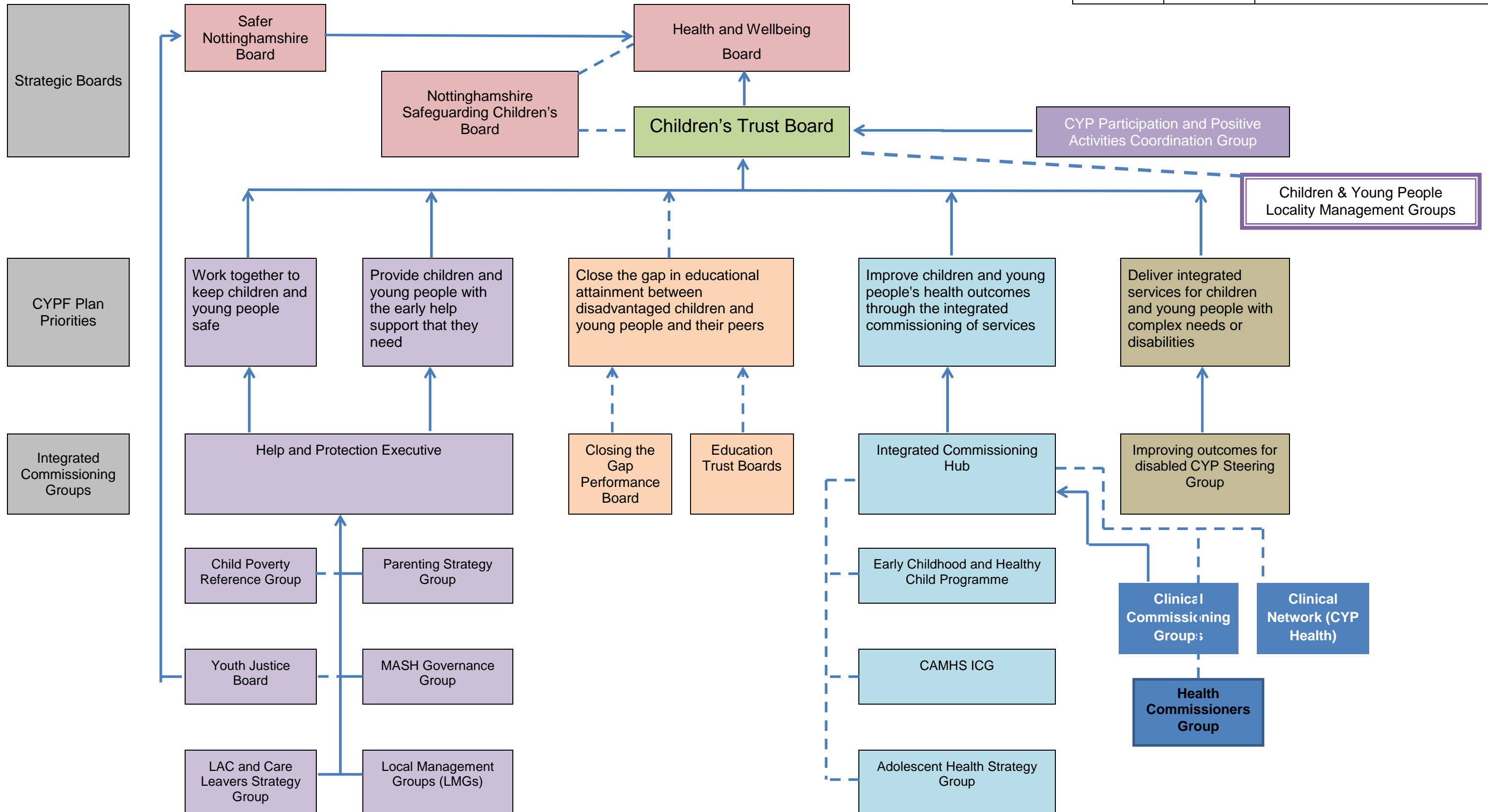
Except for previously published documents, which will be available elsewhere, the documents listed here will be available for inspection in accordance with Section 100D of the Local Government Act 1972.

Appendix A – Nottinghamshire Children’s Trust Governance Chart as at July 2015

Appendix B – Proposed questionnaire for the review of the Children’s Trust

Appendix A – Nottinghamshire Children’s Trust Governance Chart

Key:		Indicates accountability
		Indicates arrangements to work together and share information



Appendix B – Proposed questionnaire for the review of the Children’s Trust

Please complete all the following questions adding additional information wherever possible. The deadline for completion is Friday 21 August 2015. The information provided will be discussed in follow-up interviews, as well as contributing to the final draft report to be considered by the Children’s Trust Board at its October meeting.
Thank you

Name:				
Organisation:				
Question 1	How long have you been a member of the Children’s Trust Board / Executive?			
Answer	Less than 6 months <input type="checkbox"/>	Less than 12 months <input type="checkbox"/>	One to two years <input type="checkbox"/>	More than two years <input type="checkbox"/>

The purpose of the Nottinghamshire Children’s Trust

Nottinghamshire Children’s Trust aims to promote the health and wellbeing of the children, young people and families of Nottinghamshire.

Nottinghamshire Children’s Trust Board is the children’s commissioning sub-group of the Nottinghamshire Health and Wellbeing Board. It is responsible for strategic oversight of the integrated commissioning of services to promote the health and wellbeing of children and young people.

The Children’s Trust is a partnership of organisations which enables these partner services to meet their statutory duty, under the Children Act 2004, to co-operate to improve the well-being of children?

The Children’s Trust has an active working relationship with Nottinghamshire Safeguarding Children Board (NSCB).

The Nottinghamshire Children, Young People and Families Plan is the joint strategic plan of the Children’s Trust. This plan will be aligned to Nottinghamshire’s Health and Wellbeing Strategy..... Children’s Trust Board Terms of Reference 2014-2015

Question 2	Do you think the purpose of the Trust outlined in its Terms of Reference accurately reflect the work of the Children’s Trust?	
Answer	Yes <input type="checkbox"/>	Comment:
	No <input type="checkbox"/>	
Question 3	How might the ‘active working relationship’ with the NSCB and the Children’s Trust be developed further in the future?	
Answer	Comment:	

The principles which underpin the work of the Trust

- *We will work together to achieve our ambition, building mutual trust, respect and openness.*
- *We will seek the views of children and young people, families and communities when planning partnership activities.*
- *We will be clear about partnership priorities and base our joint planning or integrated commissioning of services around them.*
- *We will identify how integrated commissioning or shared delivery can promote high quality, cost-effective service delivery that meets local needs*
- *We will work flexibly and adapt our plans and activities to changing circumstances.*
- *We will ensure that decisions are based on clear evidence about local needs and about the likely impact of planned activities.*
- *We will always seek to maximise value for money, both in the partnership activities that we develop and in our meeting and information-sharing arrangements.*
- *We will communicate about what we do, to our staff in partner organisations and to children, young people, families and communities.*

Children's Trust Board Terms of Reference 2014-2015

Question 4	Do you think the principles remain relevant to the work of the Trust?	
Answer	Yes <input type="checkbox"/> No <input type="checkbox"/>	Comment:
Question 5	How might these principles be improved?	
Answer	Comment:	

The scope of the Children's Trust

Nottinghamshire Children's Trust Board is the children's commissioning sub-group of the Nottinghamshire Health and Wellbeing Board. It is responsible for strategic oversight of the integrated commissioning of services to promote the health and wellbeing of children and young people.

Children's Trust Board Terms of Reference 2014-2015

Question 6	Do you think the scope of the Children's Trust is sufficient?	
Answer	Yes <input type="checkbox"/> No <input type="checkbox"/>	Comment:
Question 7	Which areas of partnership activity do you think should be within scope of the Children's Trust?	
Answer (please tick the appropriate boxes)	The protection of children and young people	<input type="checkbox"/>
	Health services for children and young people	<input type="checkbox"/>
	Educational attainment	<input type="checkbox"/>
	The provision of early help services	<input type="checkbox"/>
	Other areas (Please state) _____	<input type="checkbox"/>

The responsibilities of the Children’s Trust

The Children’s Trust Board will:

- *identify where services are, or could be, jointly commissioned by all or some of the partners within the Children’s Trust and provide strategic direction of integrated commissioning arrangements,*
- *ensure commissioned activities are based on an understanding about the needs of local children and young people, and on evidence that they are likely to achieve the desired impact,*
- *at intervals not exceeding three years, produce a joint strategic plan that is aligned to Nottinghamshire’s Health and Wellbeing Strategy and that identifies the strategic commissioning priorities for the Children’s Trust, to be known as the Children, Young People and Families (CYPF) Plan,*
- *produce an annually-refreshed delivery plan which identifies how the Children’s Trust will deliver its strategic priorities set out in its CYPF Plan,*
- *oversee the implementation of the CYPF Plan, delegating responsibility to other groups where appropriate, and monitor evidence of its impact,*
- *provide updates to the Health and Wellbeing Board on progress in integrated commissioning, and provide advice on how the needs of children, young people and families can be met within planning for health and wellbeing improvements across all public services,*
- *contribute to the development and update of the Joint Strategic Needs Assessment for Nottinghamshire, ensuring that this includes evidence relating to the health and wellbeing needs of children, young people and families,*
- *review the annual report from the Nottinghamshire Safeguarding Children Board, identify any action that the Children’s Trust should take in response, and ensure that this action is implemented,*
- *provide information about partnership activities to staff at all levels within partner organisations to enable them to understand the strategic direction of the Children’s Trust and how it impacts on their work. Children’s Trust Board Terms of Reference 2014-2015*

Question 8	On a scale of 1 to 10, with 1 being the lowest, how would you rate the effectiveness of the Children’s Trust in meeting its responsibilities?									
Answer	1	2	3	4	5	6	7	8	9	10
	Please comment on your answer above:									
Question 9	Which of these responsibilities do you think should be the priorities for the Children’s Board over the next two years?									
Answer	Comment:									

Performance management of the Children, Young People and Families (CYPF) Plan and its annual delivery plans

Produce a joint strategic plan that is aligned to Nottinghamshire’s Health and Wellbeing Strategy and that identifies the strategic commissioning priorities for the Children’s Trust, to be known as the Children, Young People and Families (CYPF) Plan,

Produce an annually-refreshed delivery plan which identifies how the Children’s Trust will deliver its strategic priorities set out in its CYPF Plan,

Oversee the implementation of the CYPF Plan, delegating responsibility to other groups where appropriate, and monitor evidence of its impact,

Children’s Trust Board Terms of Reference 2014-2015

Question 10	Do you think the delivery and impact of the CYPF Plan is effectively performance managed?	
Answer	Yes <input type="checkbox"/> No <input type="checkbox"/>	Comment:
Question 11	How might the current performance management arrangements be strengthened?	
Answer	Comment:	

Consultation with children, young people, and families

Nottinghamshire Children's Trust is committed to seeking the views of children and young people, families and communities when planning partnership activities, when seeking evidence of local needs or when assessing the impact of planned activities.

Views will be sought through a variety of methods... which may include specific consultation events, the seeking of feedback through correspondence, electronic media...and...from information gained through the activities of partner services and their contacts with children, young people and families.

Children's Trust Board Terms of Reference 2014-2015

Question 12	<p>On a scale of 1 to 10, with 1 being the lowest, how would you rate the consultation with children, young people and families by the Children's Trust and its partners?</p> <table border="1" data-bbox="424 1032 1401 1099"> <tr> <td>1</td> <td>2</td> <td>3</td> <td>4</td> <td>5</td> <td>6</td> <td>7</td> <td>8</td> <td>9</td> <td>10</td> </tr> </table>	1	2	3	4	5	6	7	8	9	10
1	2	3	4	5	6	7	8	9	10		
Question 13	How do you think the Children's Trust could improve its consultation activities with children, young people and families?										
Answer	Comment:										

Communication

We will communicate about what we do, to our staff in partner organisations

Children's Trust Board Terms of Reference 2014-2015

Question 14	How effectively does the Children's Trust communicate with the wider partnership and its workforce?										
Answer 14a	<p>On a scale of 1 to 10, with 1 being the lowest, how would you rate the effectiveness of communications with the wider Partnership?</p> <table border="1"> <tr> <td>1</td> <td>2</td> <td>3</td> <td>4</td> <td>5</td> <td>6</td> <td>7</td> <td>8</td> <td>9</td> <td>10</td> </tr> </table>	1	2	3	4	5	6	7	8	9	10
1	2	3	4	5	6	7	8	9	10		
Answer 14b	<p>On a scale of 1 to 10, with 1 being the lowest, how would you rate the effectiveness of communications with the Partnership's workforce?</p> <table border="1"> <tr> <td>1</td> <td>2</td> <td>3</td> <td>4</td> <td>5</td> <td>6</td> <td>7</td> <td>8</td> <td>9</td> <td>10</td> </tr> </table>	1	2	3	4	5	6	7	8	9	10
1	2	3	4	5	6	7	8	9	10		
Question 15	How could communications be improved?										
Answer	Comment:										

Additional comments

Question 16	Do you have any additional comments about the Children's Trust you would like to make which have not been covered by the previous questions?
Answer	Comment:

Thank you for completing the questionnaire