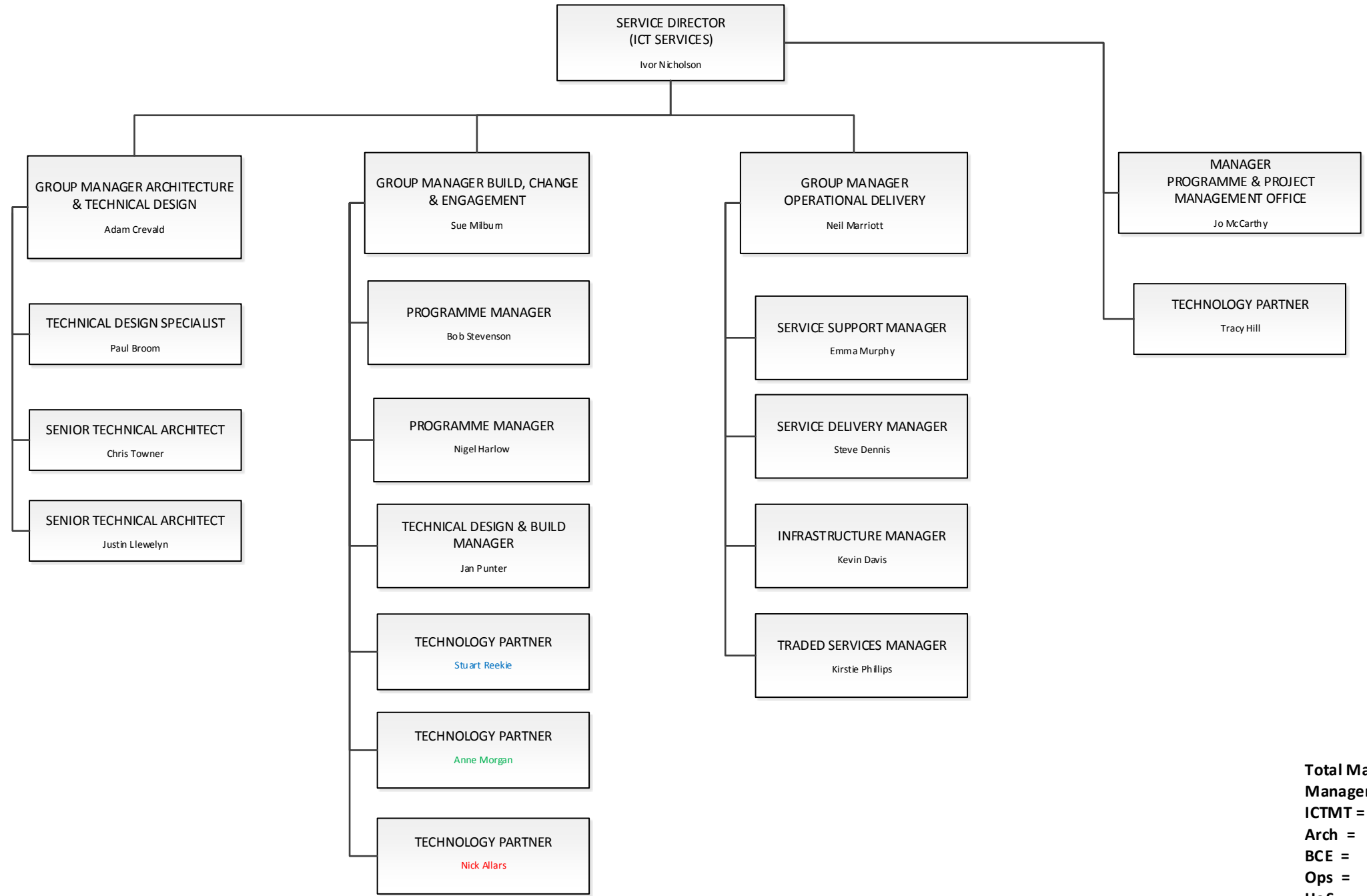
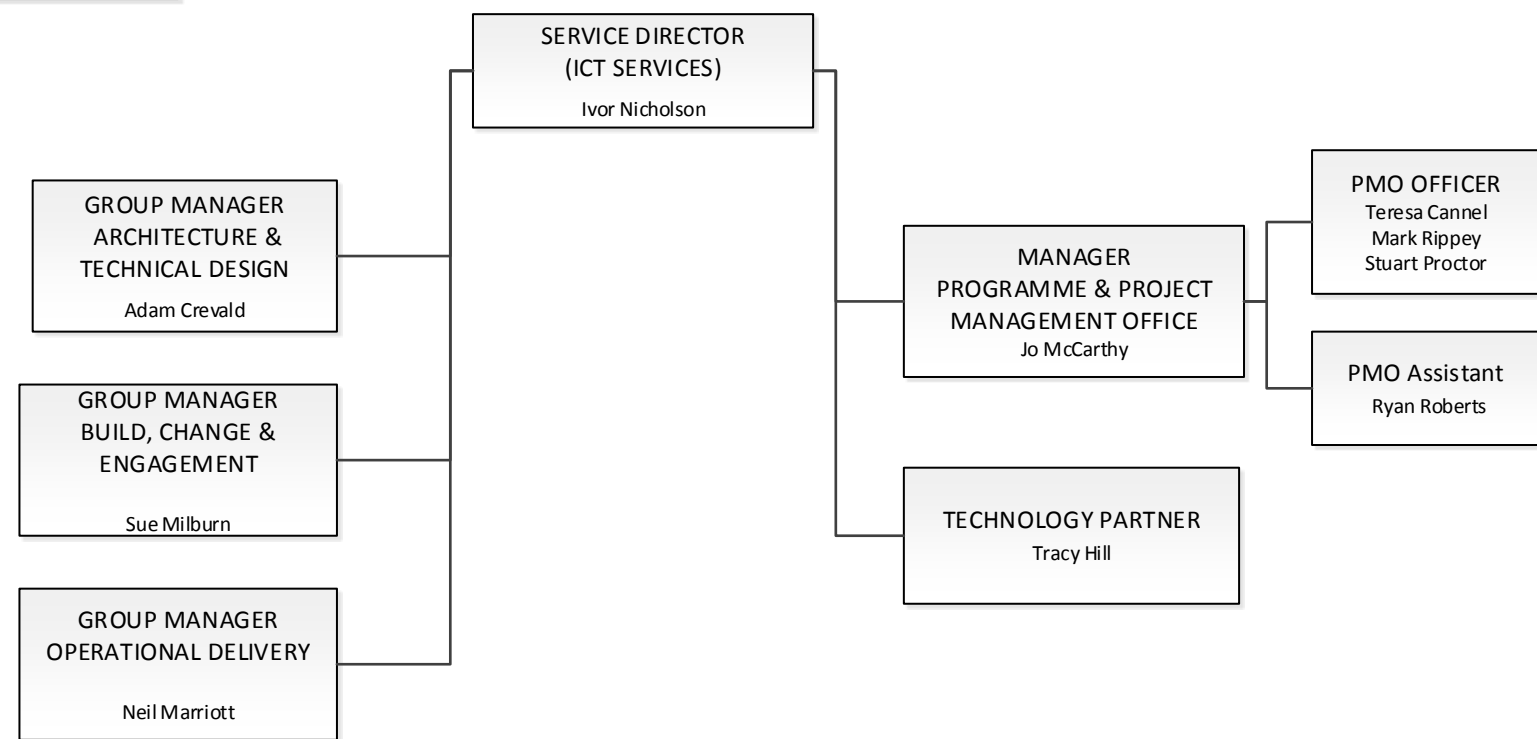


**ICT SERVICES
Management Structure**



Total Management team fte :
Management Team – 19
 ICTMT = 4
 Arch = 3
 BCE = 6
 Ops = 4
 HoS = 2

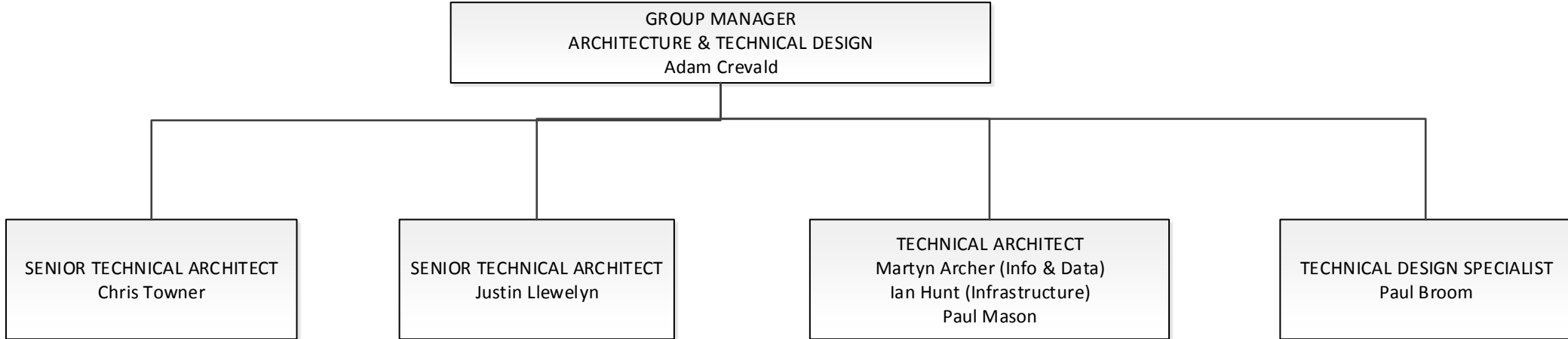
**ICT SERVICES
Directorate**



Total fte :
Directorate - 10
(including Posts Vacant)

Total fte :
Directorate - 11
(including Posts Vacant)

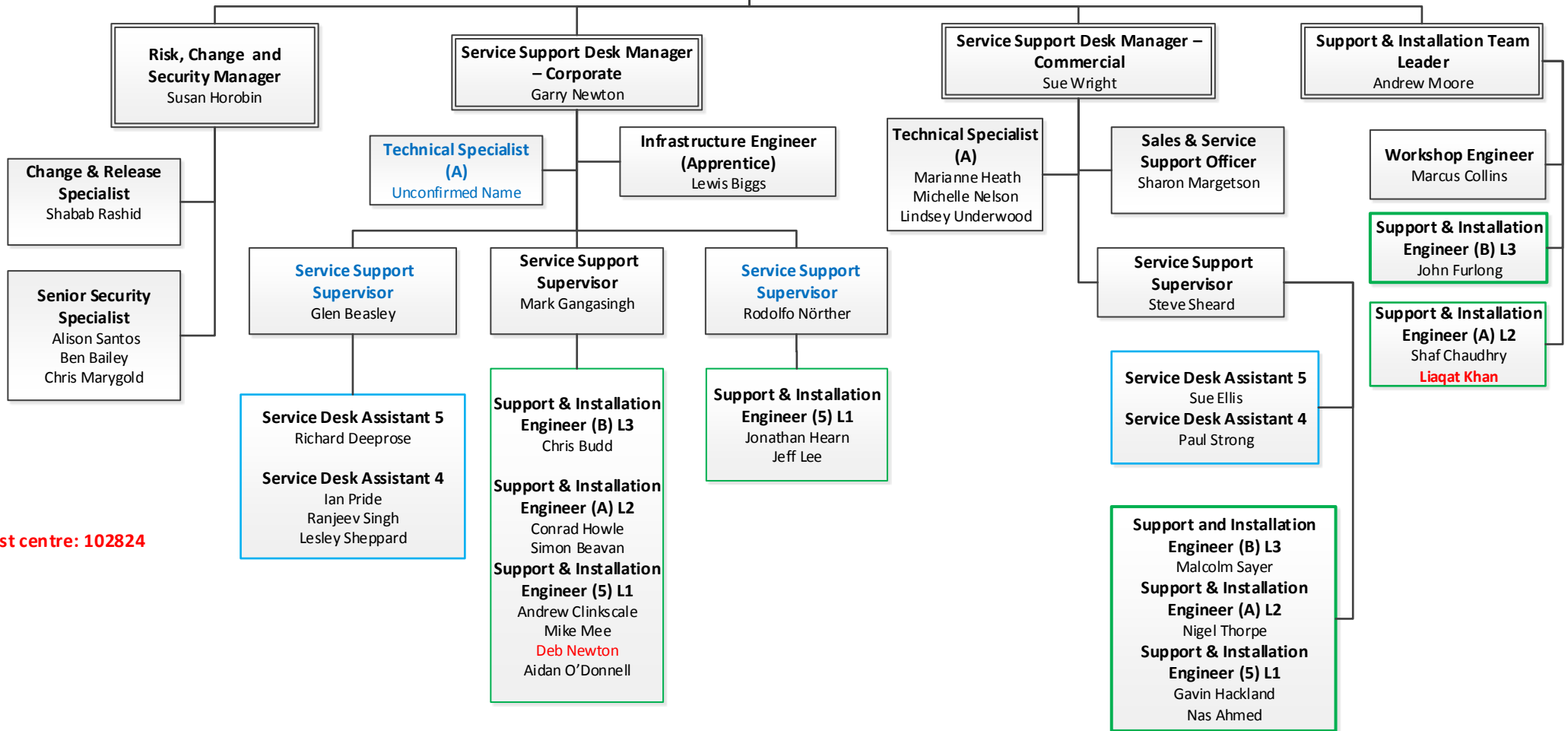
**ICT SERVICES
ARCHITECTURE & TECHNICAL DESIGN**



Total fte :
Architecture & TD - 6
(including Posts Vacant)

Emma Murphy
Service Support Manager

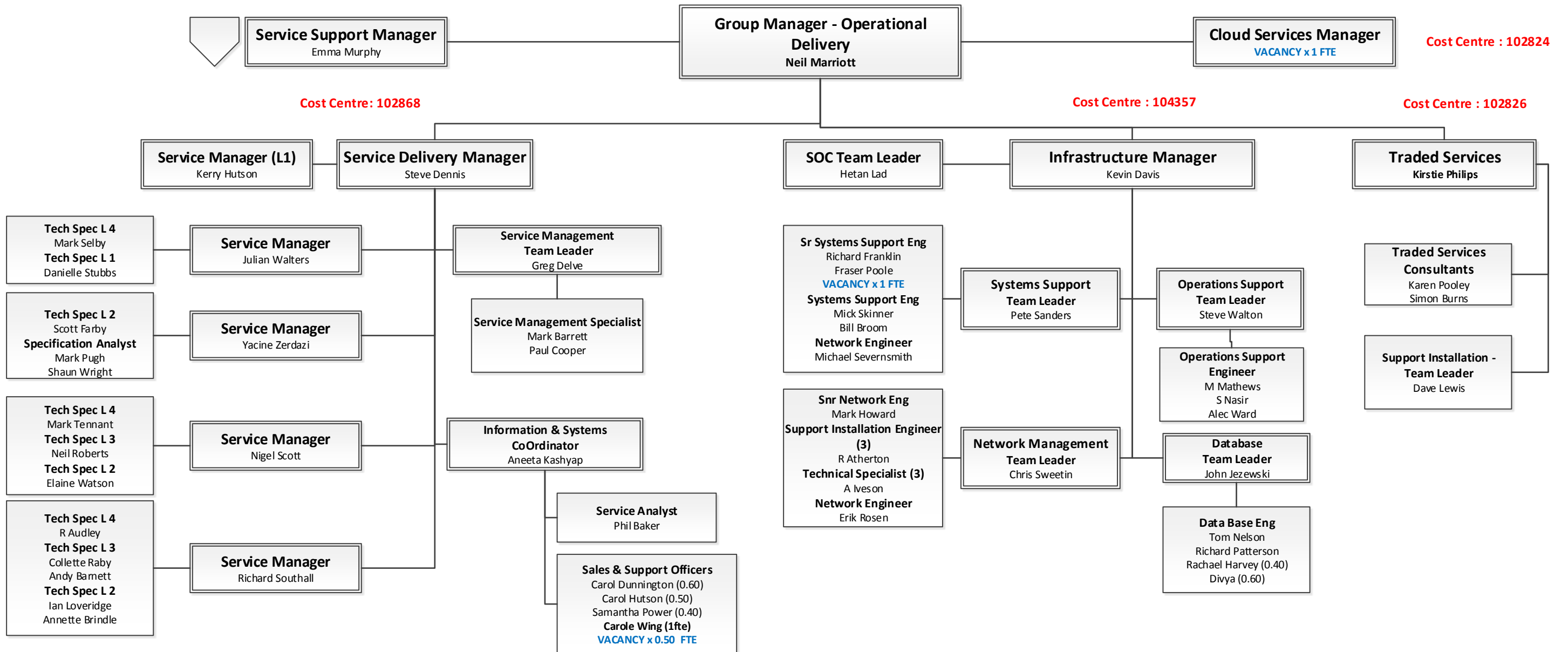
Cost Centre: 102801



Cost centre: 102824

Total fte :

Operations Delivery – Service Support - 42
(including Posts Vacant)
Deb Newton / Liaqat Khan – seconded to Smarter
Working Programme



Total fte : 96
Operations Delivery
Service Support – 42
Traded Service – 4
Service Delivery - 28
Infrastructure - 22
 (including Posts Vacant)