

# **Tackling Child Poverty and Improving Life Chances**

Irene Kakoullis – Early Childhood Services, NCC

Alex McLeish - Broxtowe Borough Council

Rachel Clark – Troubled Families, NCC

David McCoulough – Diocese/Transforming Notts Together



**Nottinghamshire  
County Council**

# Building Blocks to address Child Poverty

Place & Delivery

Employment & Skills

Family & Life Chances

Financial Support

At Risk Groups

**Place and delivery:** focuses on housing, transport, crime and communities. Localism and the 'big society' approach are driving the agenda, and services are being encouraged to establish a clearer picture of their role and the impact of their regional and area-based activities on decreasing child poverty.

**Employment and skills:** covers worklessness, promoting parental employment by addressing barriers to work, lack of skills and labour market experience, lack of childcare and flexible working arrangements. It also looks at 'in-work' poverty.

**Family and life chances:** recognises that there are significant barriers to some disadvantaged children and young people achieving positive health, educational and future employment outcomes. The aim is to remove these barriers through interventions at key stages and help reduce inter-generational poverty. The approach is to investigate which policies show evidence of having a positive impact on children living in poverty and then identify what further action is needed to improve these outcomes.

**Financial support:** explores the potential for benefits to have a positive impact on child poverty, by increasing take up by vulnerable groups and improving work incentives for workless households. The building block also explores financial inclusion, debt and capability to help some of the most vulnerable engage with the benefit system and other forms of support, in conjunction with voluntary and community sector organisations.

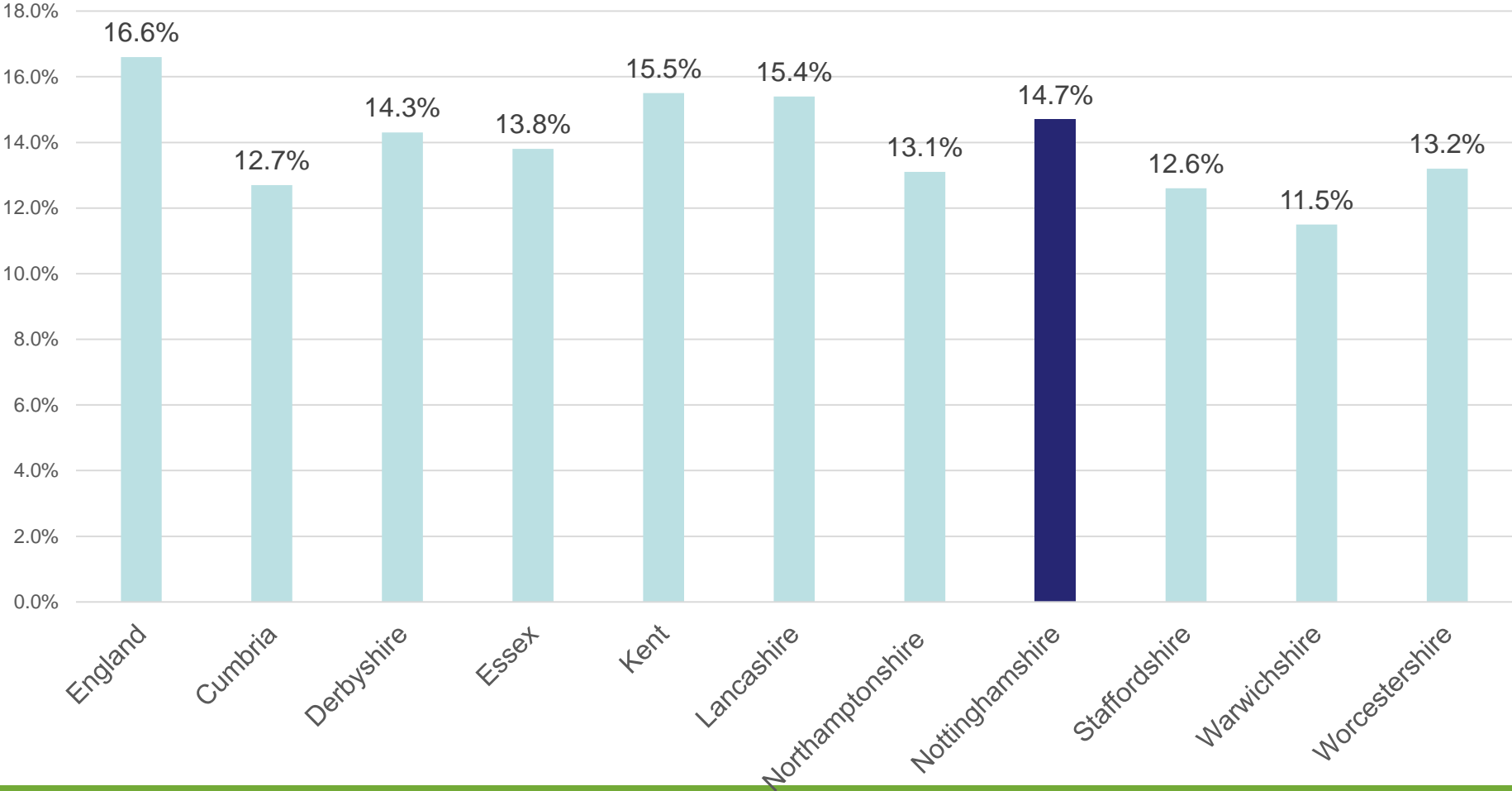


Nottinghamshire  
County Council

# Improving Life Chances for Children and Families Partnership – who are we?

- CAB
  - Home Start
  - Children's Centres
  - D2 N2
  - Diocese/ Transforming Notts Together (TNT)
  - District/Borough Councils
  - East Midlands Chamber of Commerce
  - Family Action
  - Inspire
  - Job Centre Plus
  - Notts Healthcare Trust
- NCC:
- Economic Development
  - Early Childhood Services
  - Public Health
  - Troubled Families
  - Welfare Rights
  - Support to Schools

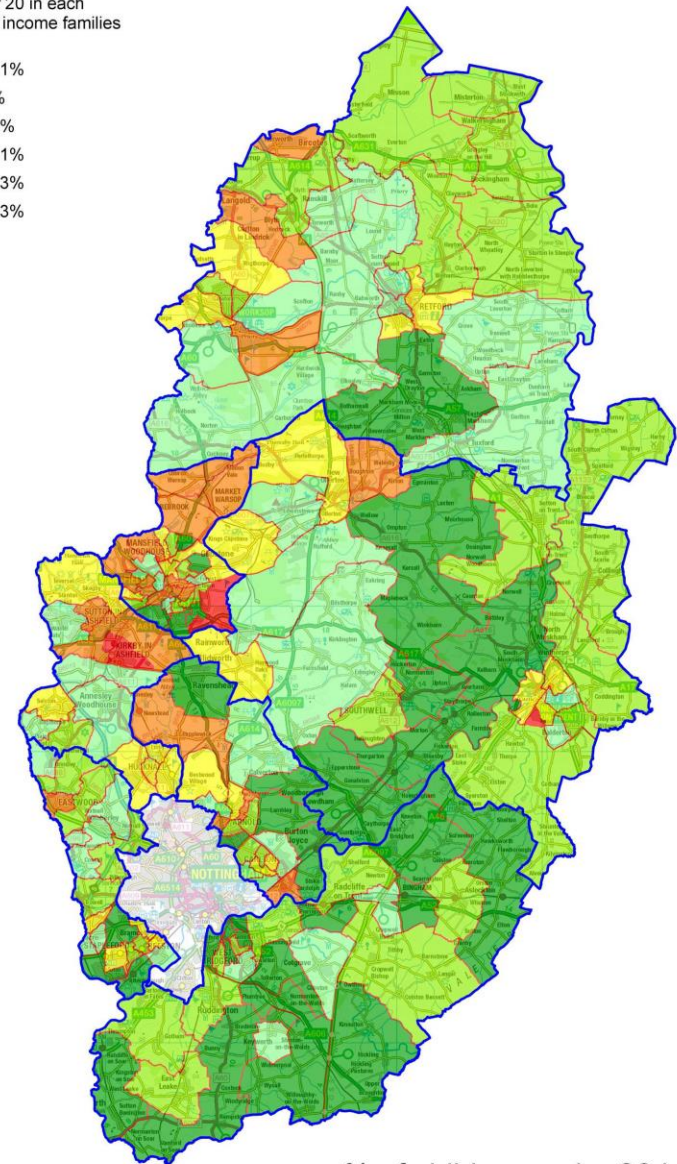
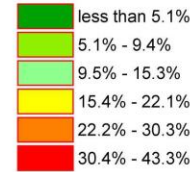
# % of Children (under 20 years) in low income families 2015 – stat neighbours



# Children in Low Income Families 2015

Local Authority Name	% of Children in low-income families	
	Under 16 yrs	All Children
England	16.8%	16.6%
Ashfield	20.9%	20.3%
Bassetlaw	15.8%	15.1%
Broxtowe	12.8%	12.5%
Gedling	13.6%	13.2%
Mansfield	19.9%	19.3%
Newark and Sherwood	14.9%	14.6%
Rushcliffe	6.6%	6.6%

% of children under 20 in each census ward in low income families in 2015



% of children under 20 in each census ward (2011 wards) in low income families in 2015



# Ward Level Map – Mansfield District



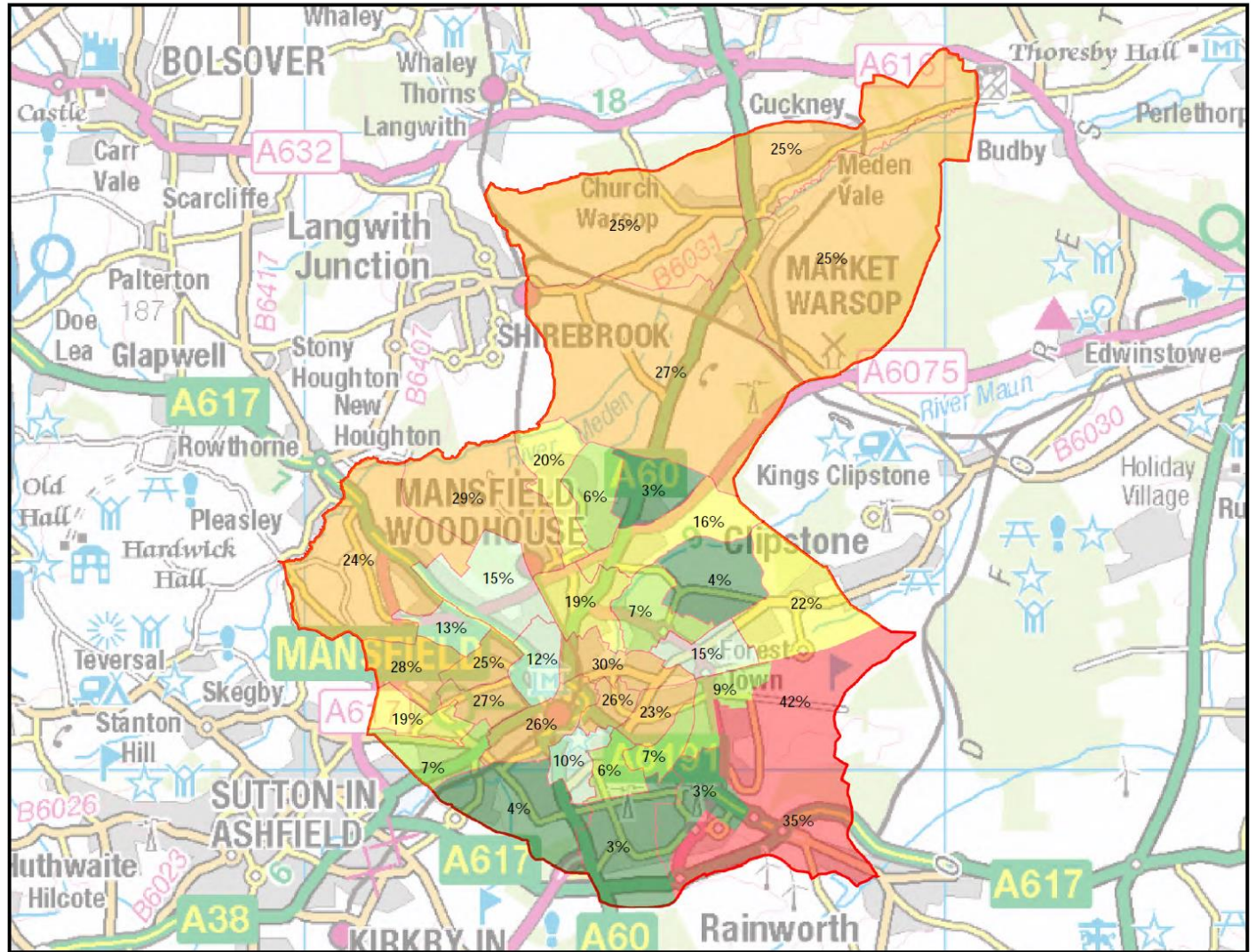
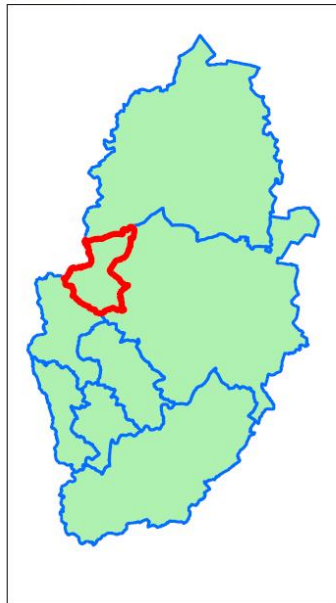
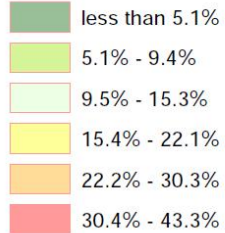
**Nottinghamshire  
County Council**

% of children under 20 in poverty in each  
census ward (2011 wards) in 2015

Nottinghamshire Districts : Mansfield District



% of children in poverty, 2015



District boundary

Contains Ordnance Survey data  
(C) Crown Copyright & database rights  
March 2018  
Nottinghamshire County Council

Produced by: Performance, Intelligence  
& Policy Team, March 2018



# LSOA Map – Mansfield South



**Nottinghamshire  
County Council**

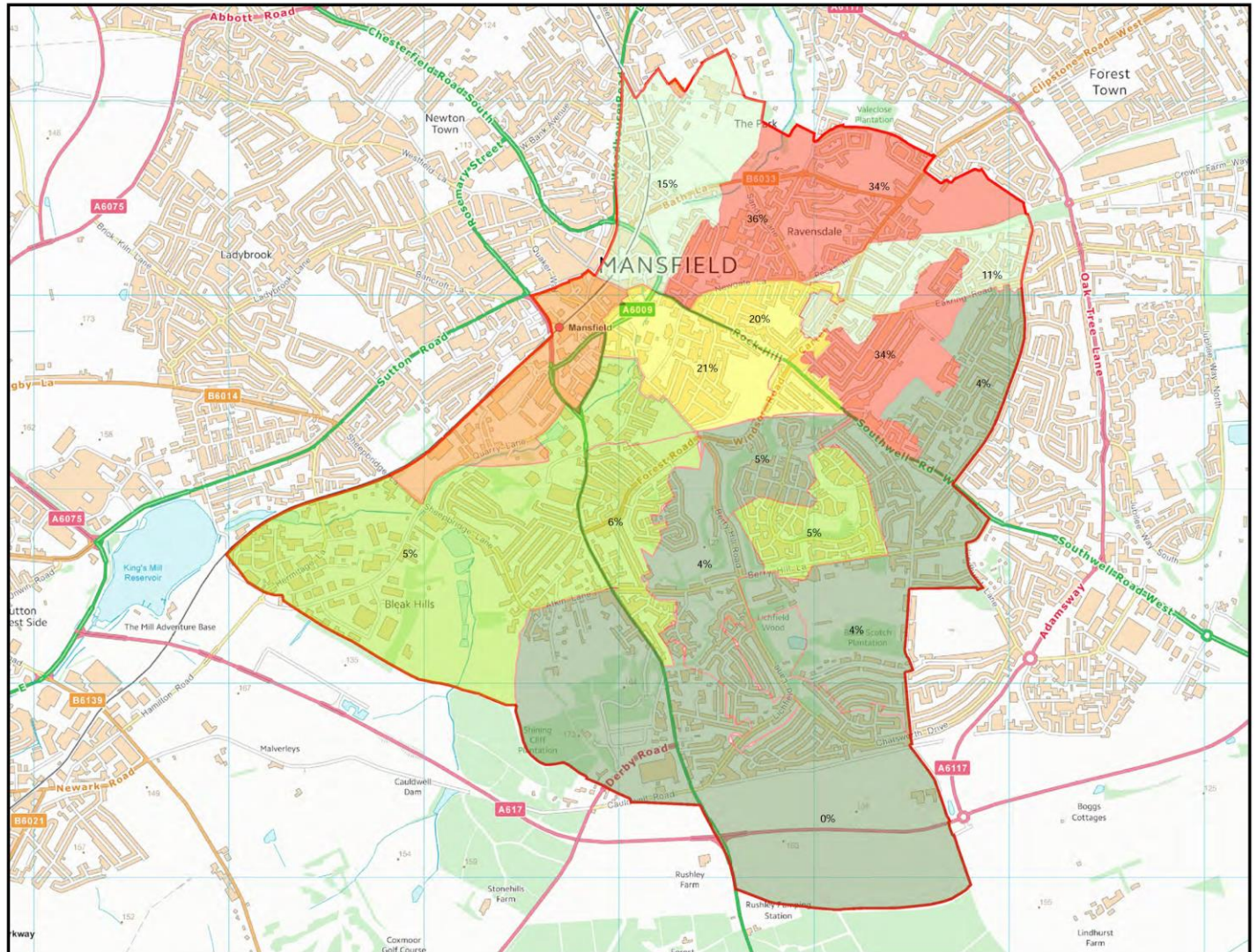
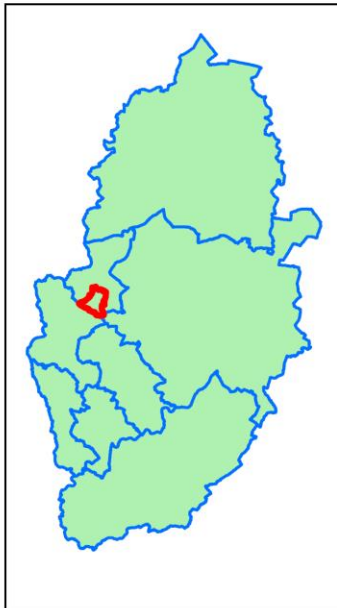
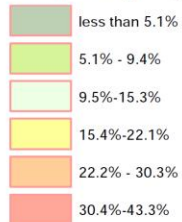
% of children under 20 in poverty in each  
Super Output Area (SOA) in 2015

Mansfield District new County EDs :

Mansfield South County ED



% of children in poverty, 2015



District boundary  
 County ED boundary

Contains Ordnance Survey data  
 (C) Crown Copyright & database rights  
 March 2018  
 Nottinghamshire County Council

Produced by: Performance, Intelligence  
 & Policy Team, March 2018

# More detail...

- Child Poverty Maps are available at :  
<http://www.nottinghamshire.gov.uk/care/childrens-social-care/nottinghamshire-childrens-trust/child-poverty/>
- Maps highlight district level data by ward and Lower Super Output Data





# Social Mobility Index 2017

Local Authority	Social Mobility Index Rank (2017) <i>where 1 is the best and 324 is worst</i>
Ashfield District	289
Bassetlaw District	230
Broxtowe Borough	270
Gedling Borough	204
Mansfield District	317
Newark and Sherwood District	313
Rushcliffe Borough	44



# **What are we trying to achieve?**

## **Expected Outcomes**

- Children and Families experience fewer negative outcomes from the effects of poverty.
- Families and Children are able to move out of poverty.
- The Cycle of Poverty is broken as children are prevented from becoming poor adults.

# What can you do?

- In groups, rotate to each of the 3 outcomes. You have 10 minutes in each group.
- What actions are missing from the action plan? Are these in our control or do we need to influence others?
- Complete the pledge sheet on behalf of yourself and/or your organisation.





# What next?

- Inclusion of pledges in the Improving Life Chances Action Plan.
- Annual feedback and report re. progress against pledges.

