



View from western extent Bridleway looking east across site towards Trent



View from junction drainage ditch and trent looking across site to north west and Carlton and Trent



View west towards site from eastern river bank, taken from towpath in vicinity of properties at Carlton Ferry

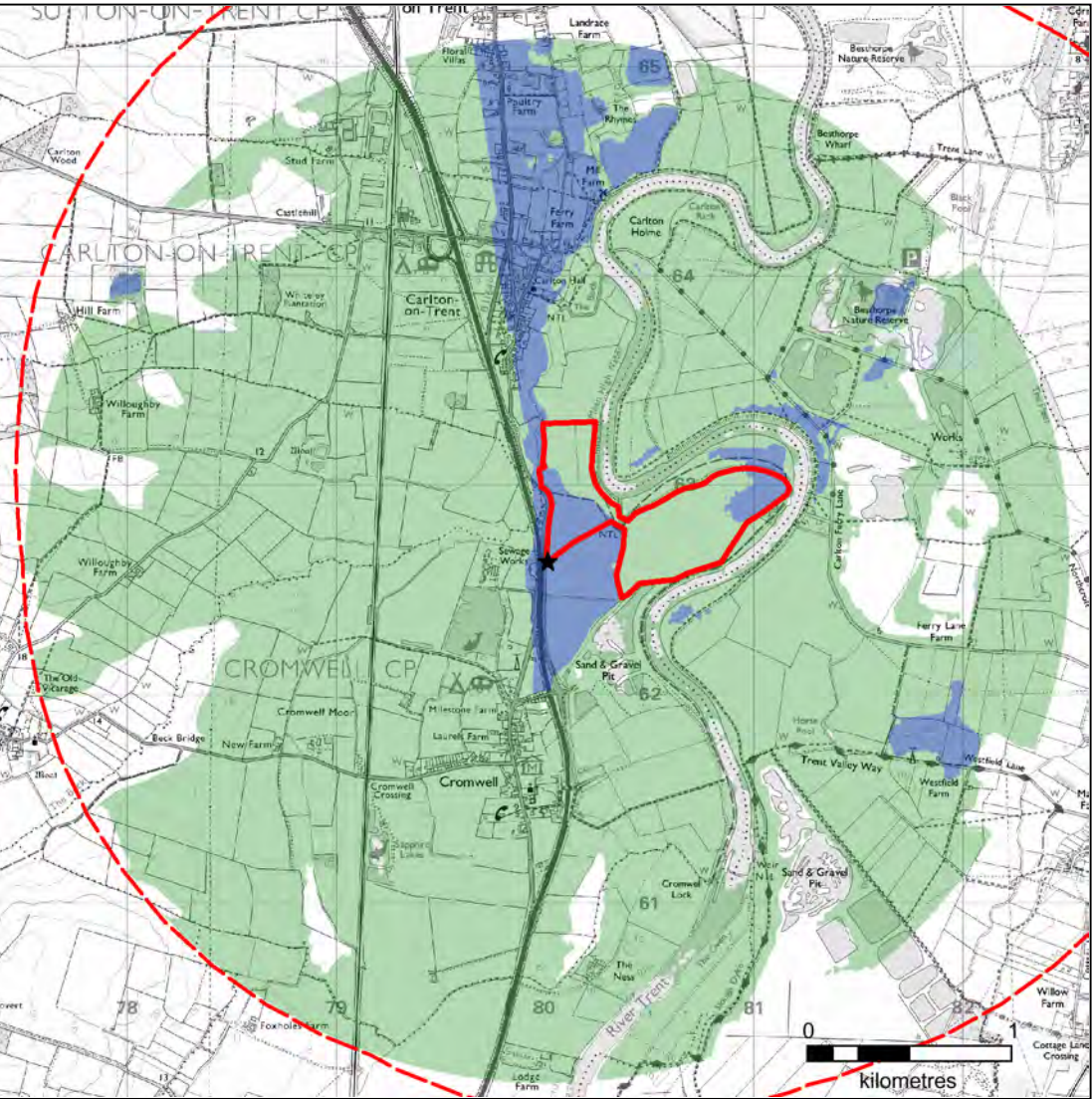


LANDSCAPE SUMMARY

Large scale but attractive low lying arable site, comprising two 'arms', one of which forms a penninsular bordered by the river meander, the other bordered by river bank. Most significant site feature deep drainage ditch with associated hedge and some intermittent trees.

VISUAL SUMMARY

Crossed by Right of Way and visible RoW on far side of river. Overlooked by 3 properties at Carlton Ferry to east although views filtered by riparian treegrowth. Visible from A1.



KEY

- ★ High Point
- Site Boundary
- 2.5km Buffer Zone
- ZTV - 0m height
- ZTV - 4m height

Rev Status	Description	Drawn	Chkd	Auth	Date
Project					
Minerals Local Plan					
Property No.	Project No. HW00935				
Title					
Cromwell					
Scale	Drawn	CG	Date	23/03/16	
As shown	Chkd	Initials	Date	23/03/16	
	Auth	Initials	Traced		
	Drawing No. HW00935/				
					Rev

via in partnership with **Nottinghamshire County Council**

www.viaem.co.uk Tel 01623 873873

Bilthorpe Depot, Bilthorpe Business Park
Bilthorpe Nottinghamshire NG22 8ST

© Via East Midlands Limited, Registered in England no.09903246



View east towards site (far side A1) from slip road at northern edge Cromwell

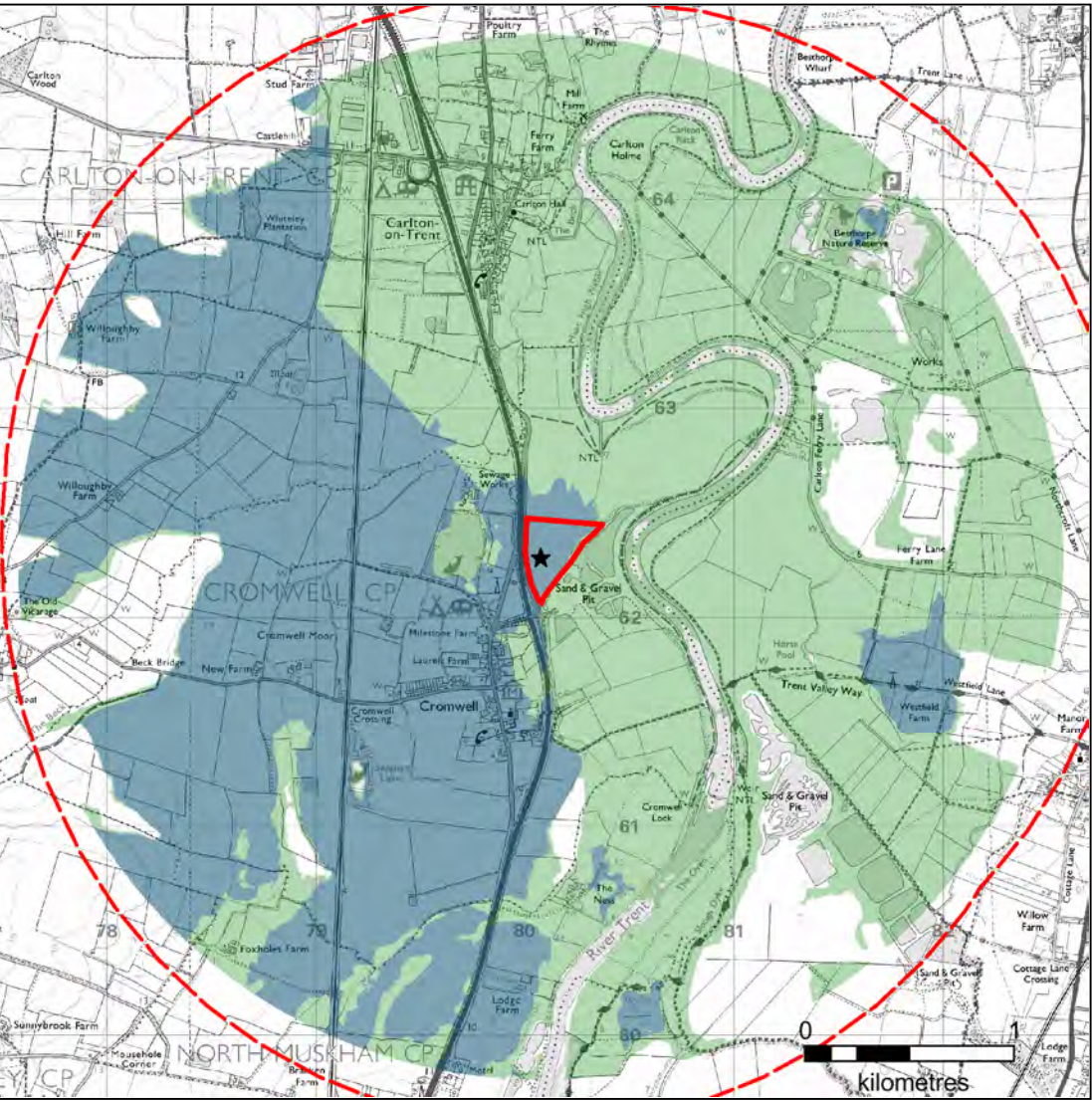


View north east across site from slip southbound slip road A1





LANDSCAPE SUMMARY
Relatively small, low lying arable site, already somewhat compromised by proximity A1 and adjacent mineral workings.

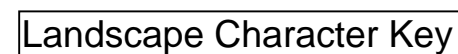
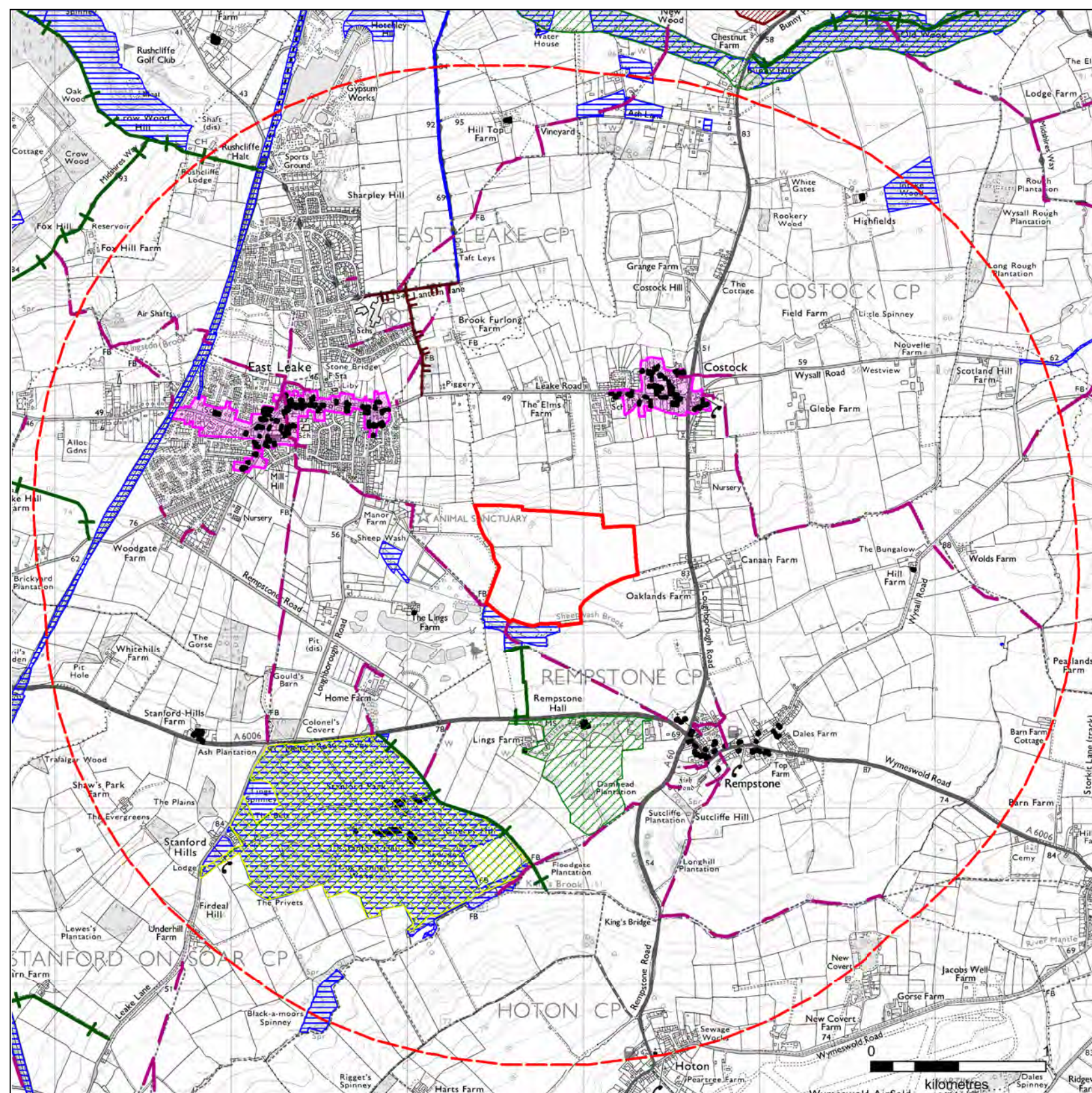
VISUAL SUMMARY
Highly visible from A1, but could be screened with boundary bund and/or vegetation.



KEY

- ★ High Point
- [Red outline] Site Boundary
- [Red dashed line] 2.5km Buffer Zone
- [Blue fill] ZTV - 0m height
- [Green fill] ZTV - 4m height

Rev	Status	Description	Drawn	Ch'd	Auth	Date
Project						
Minerals Local Plan						
Property No.	Project No. HW00935					
Cromwell Triangle						
Scale	As shown	Drawn	CG		Date	22/05/18
		Ch'd	Initials		Date	
		Auth	Initials		Traced	
Drawing No. HW00935/						
 in partnership with 						
www.viam.co.uk Tel 01623 873873						
Bilthorpe Depot, Bilthorpe Business Park						
Bilthorpe Nottinghamshire NG22 8ST						
© Via East Midlands Limited, Registered in England no.09903246						



Designation Key



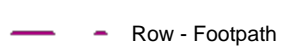
Site Boundary



2.5km Buffer Zone



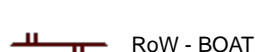
 RoW - Bridleway



 Row - Footpath



 RoW - Restricted Byway



 RoW - BOAT



Regional Parks Gardens



NCC Parks Gardens



Green Estates



Local Wildlife Sites



SINCsgGeo



Local Nature Reserves



National Nature Reserves



Historic And Listed Buildings



Scheduled Ancient Monuments



Conservation Areas

Rev Status	Description	Drawn	Ch'kd	Auth	D

Minerals Local Plan

Property No.	Project No. HW00935
--------------	------------------------

East Leake

Scale As shown	Drawn	AS	Date	23/03/17
	Ch'kd	Initials	Date	23/03/17
	Auth	Initials	Traced	

HW00935/



www.viaem.co.uk Tel 01623 873873

www.viaem.co.uk Tel 01623 873873

Bilthorpe Depot, Bilthorpe Business Park
Bilthorpe Nottinghamshire NG22 8ST

A large scale intensively managed arable landscape across gently rising ground up to a mature deciduous woodland belt and mixed plantation. Hedgerows are trimmed and majority of internal boundaries are fragmented. Hedgerow trees, largely ash, are found along the western boundary. Sheepwash Brook runs along the southern boundary fringed by an outgrown mixed hedge and woodland.

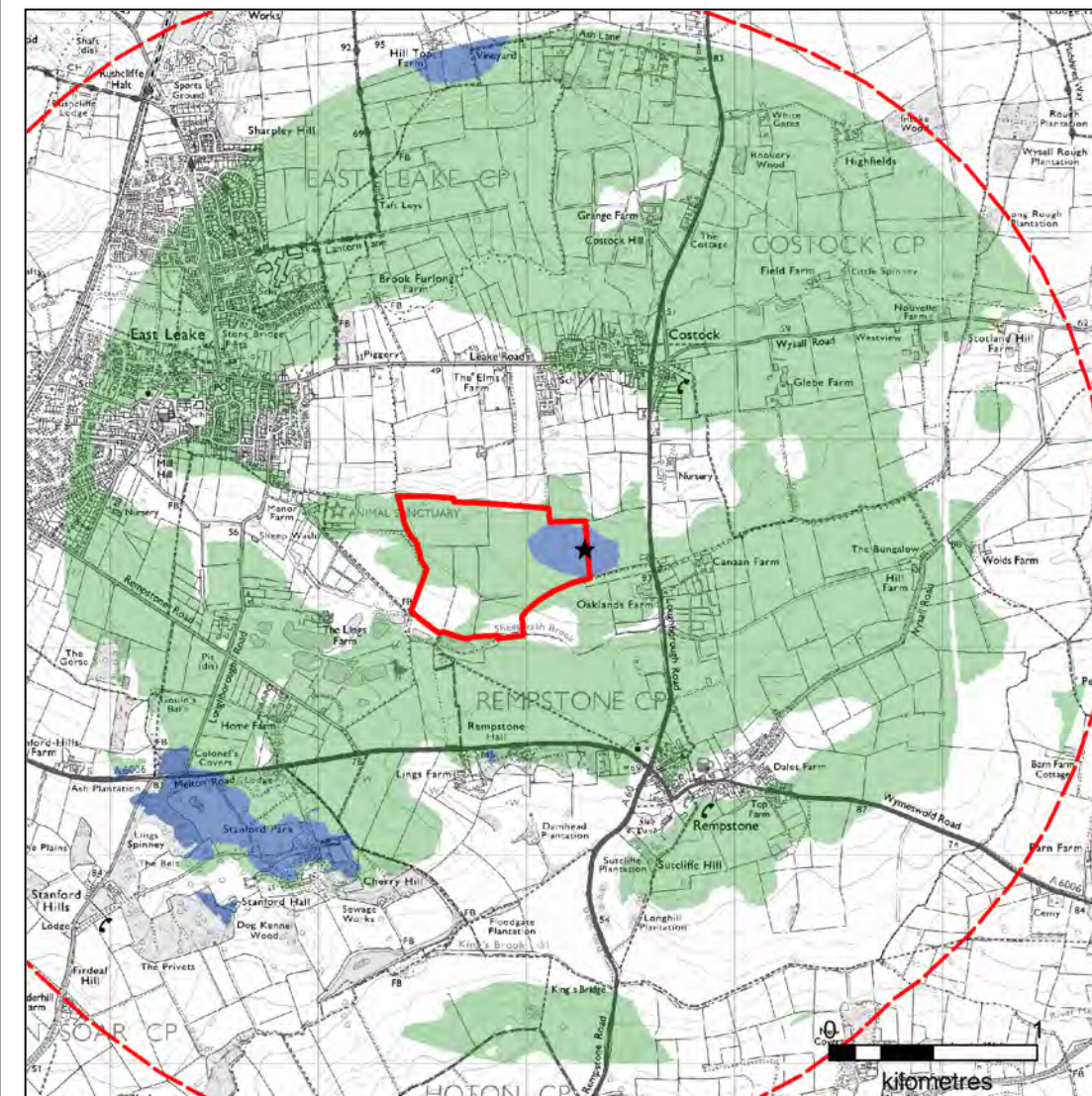
Footpath to southern boundary along Sheepwash Brook. Farm park to west of site. Although a rural landscape evidence of existing mineral sites within wider landscape to the south and residential edge of East Leake to the west. Limited visibility of the site due to landform and lack of access from publicly accessible land.




View north east through outgrown hedgerow along Sheepwash Brook from footpath to the south of the site. Land rises gently up to a shallow ridge line and so landform screen the fields within the site.



View east from footpath across a field of semi improved pasture. Site is in the mid ground. Fragmented hawthorn hedgerows are field boundaries with mature belt of trees within the centre of the site and pine/birch mix as plantation to the north of this.



★ High Point



2.5km Buffer Zone

ZTV - 4m height

Rev Status		Description	Drawn	Chkd	Auth	Date
Project						
<div>Minerals Local Plan</div>						
Property No.		Project No. HW00935				
Title <div>East Leake</div>						
As shown		Drawn AS			Date 23/03/18	
		Chkd Initials			Date 23/03/18	
		Auth Initials		Traced		
Drawing No.		Rev				
<div>HW00935/</div>						



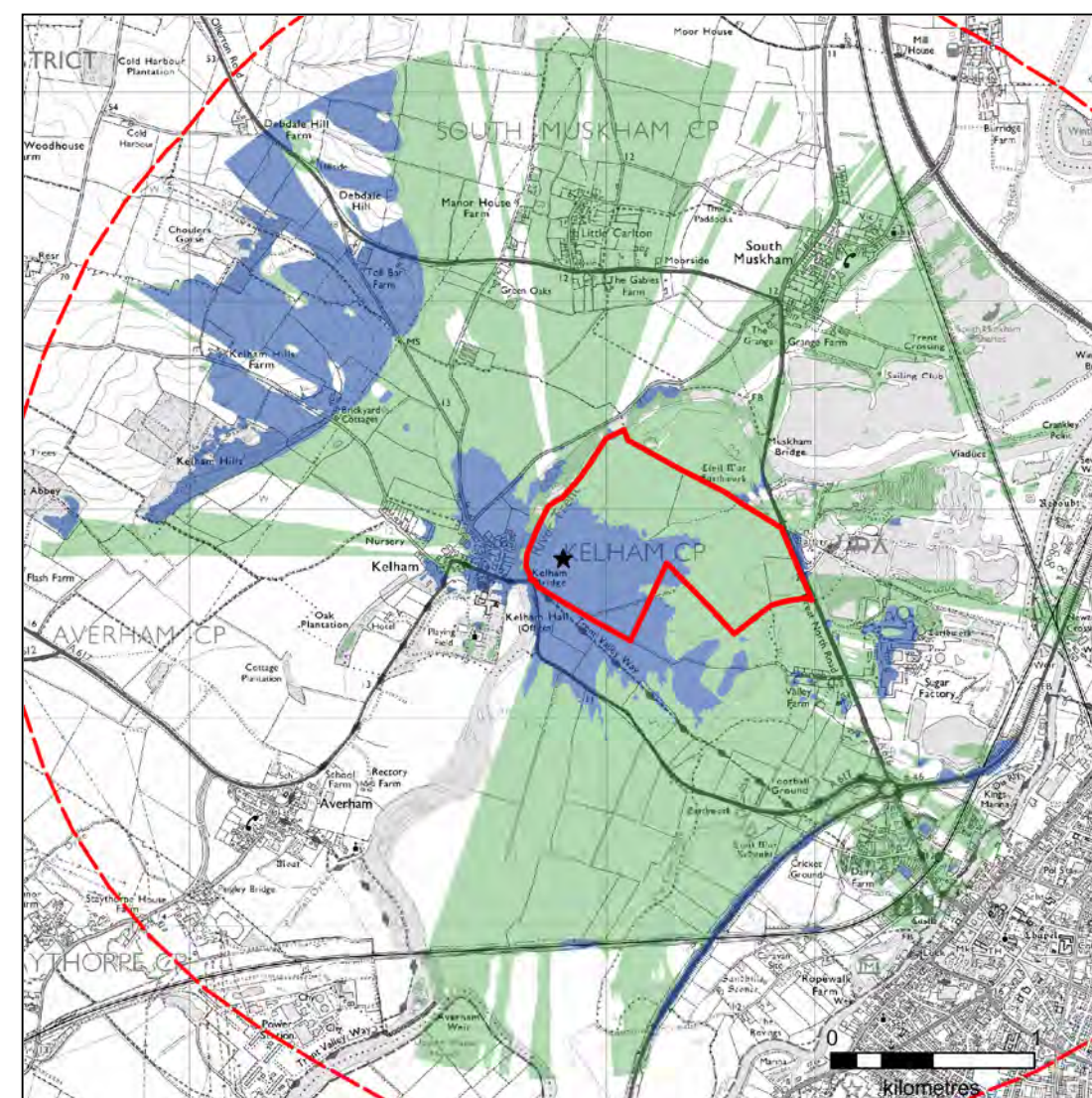


LANDSCAPE SUMMARY

Flat open landscape, bounded by river and close to civil war earthwork. Northern part of site would abut former workings near South Muskham and existing industrialising element of sugar beet factory , but development of more southern part of site would be more incongruous and impact on Kelham Hall.

VISUAL SUMMARY


Site is overlooked by road users and users of Trent Valley Way and forms approach to Newark from the north. Openness and extent would hinder screening, without introducing bunding.




KEY

- ★ High Point
- Site Boundary
- 2.5km Buffer Zone
- ZTV - 0m height
- ZTV - 4m height

Rev Status	Description	Drawn	Ch/kd	Auth	D
Project					
<h1>Minerals Local Plan</h1>					
Property No.		Project No.			
		HW00935			
Title					
<h1>Great North Road North</h1>					
Scale		Drawn		Date	
As shown		CG		23/03/	
		Ch/kd		Date	
		Initials		23/03/	
		Auth		Traced	
		Initials			
Drawing No.		Rev			
		HW00935/			



in partnership with

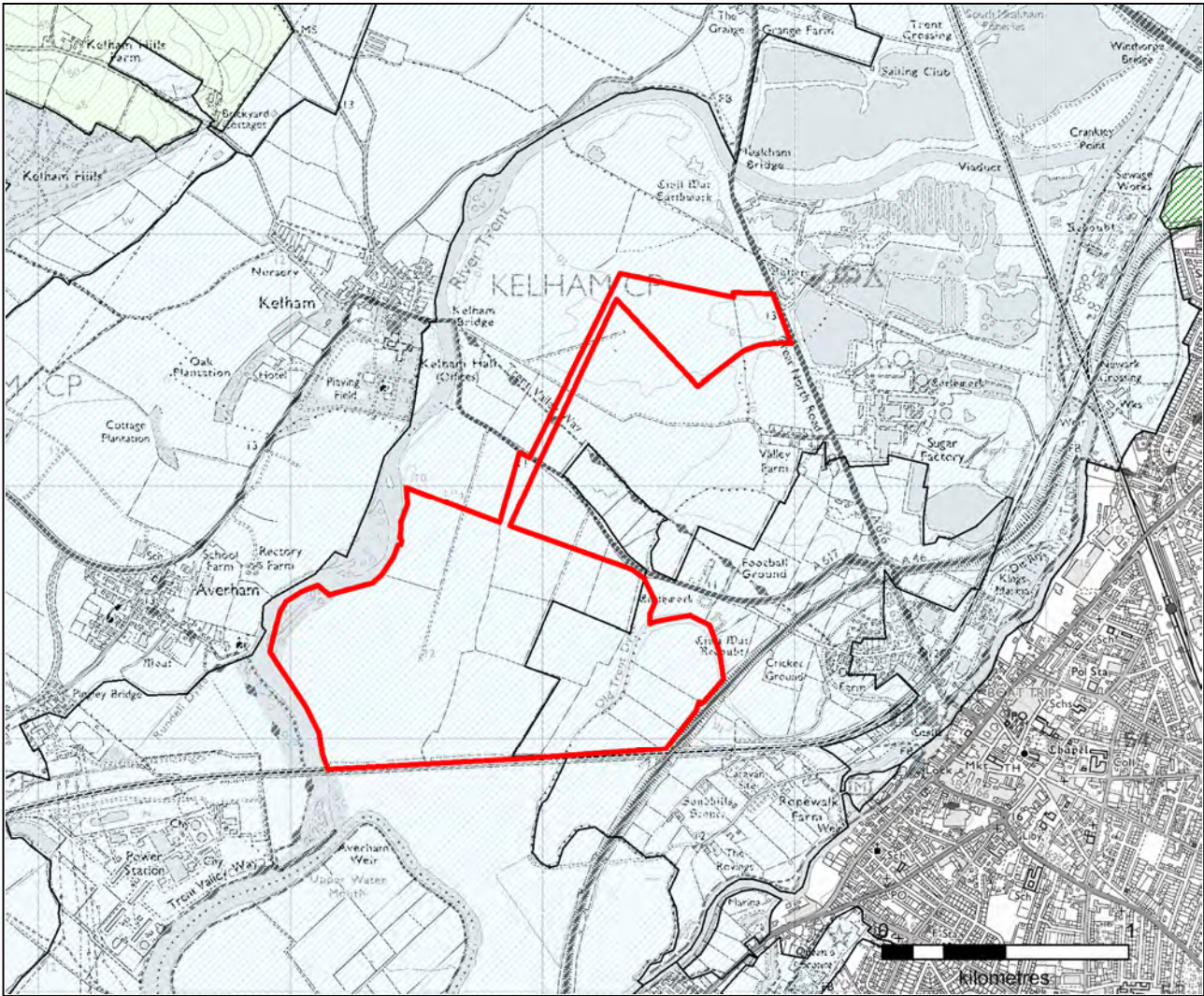
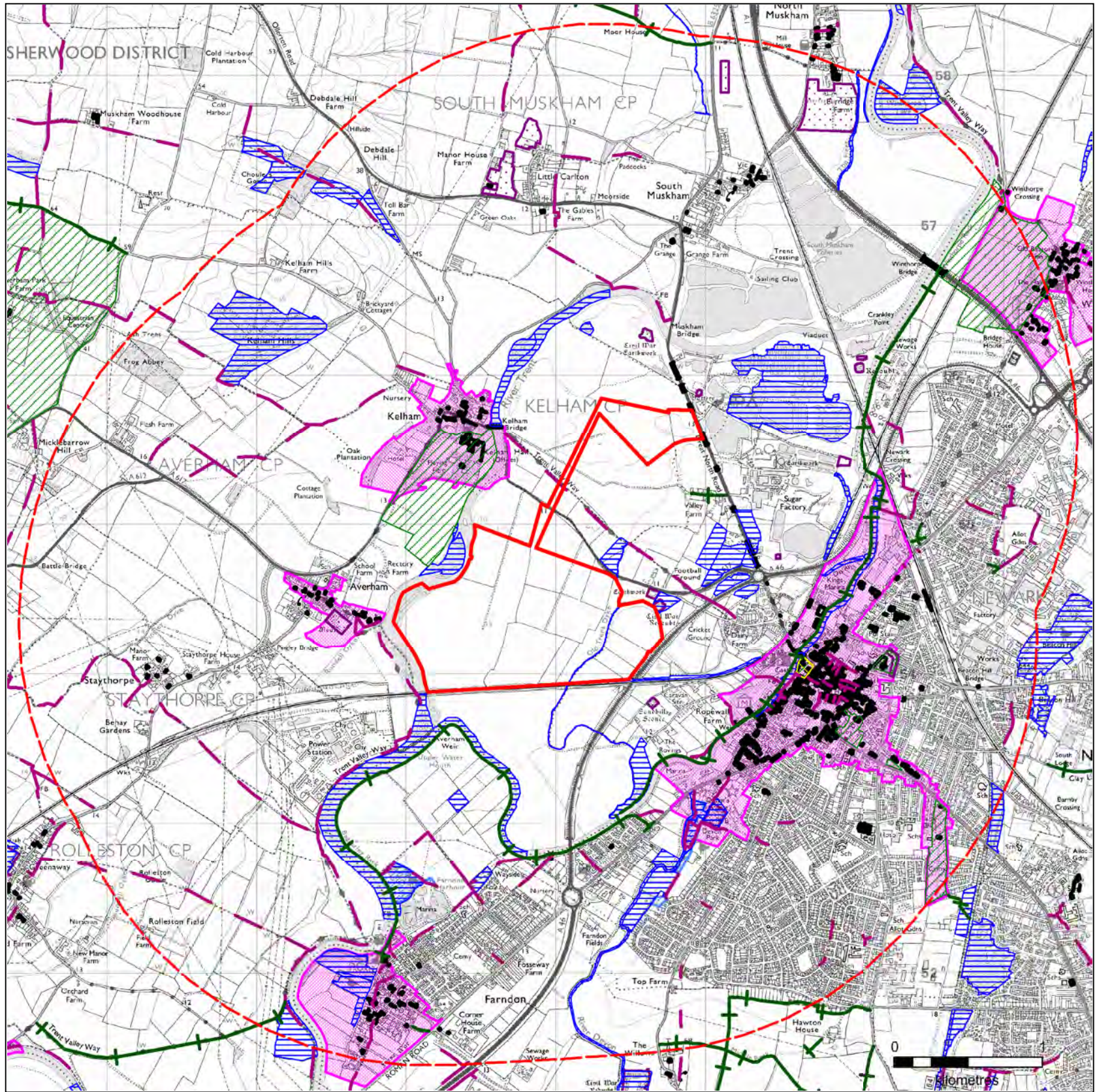


**Nottinghamshire
County Council**

www.viaem.co.uk Tel 01623 873873

Bilsthorpe Depot, Bilsthorpe Business Park
Bilsthorpe Nottinghamshire NG22 8ST

© Via East Midlands Limited, Registered in England no.09903246






Landscape Character Key



-  Mid Notts
-  Trent Washlands

Designation Key

-  Site Boundary
-  2.5km Buffer Zone
-  RoW - Bridleway
-  Row - Footpath
-  RoW - Restricted Byway
-  RoW - BOAT
-  Regional Parks Gardens
-  NCC Parks Gardens
-  Green Estates
-  Local Wildlife Sites
-  SINCSGeo
-  Local Nature Reserves
-  National Nature Reserves

-  Historic And Listed Buildings
-  Scheduled Ancient Monuments
-  Conservation Areas

Rev Status	Description	Drawn	Chkd	Auth	Date
Project					
Minerals Local Plan					
Property No.		Project No. HW00935			
Title					
Great North Road South					
Scale		Drawn CG		Date 23/03/18	
As shown		Chkd	Initials		Date 23/03/18
		Auth	Initials		Traced
Drawing No. Rev					
HW00935/					

	In partnership with		Nottinghamshire County Council
www.viaem.co.uk		Tel 01623 873873	
Bilthorpe Depot, Bilthorpe Business Park Bilthorpe Nottinghamshire NG22 8ST			

© Via East Midlands Limited, Registered in England no.09903246

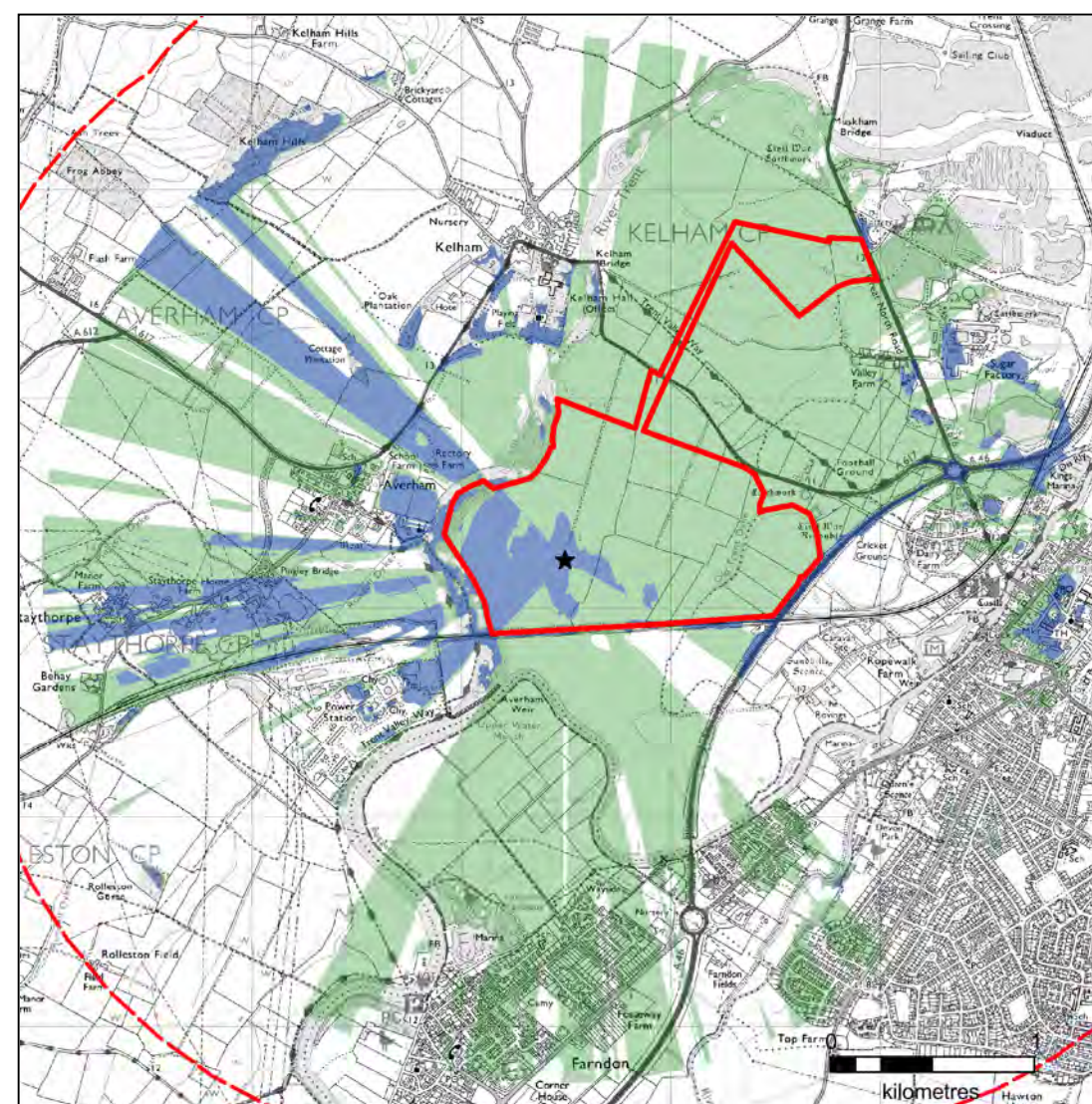


LANDSCAPE SUMMARY

This forms part of a low lying flat landscape following meaders of the Trent. It contains a SINC Old Trent Dyke and adjacent remnant grassland. Given the open nature of landscape and lack vertical elements, hard to screen workings without introducing incongruous elements. Existing character is impacted negatively to some extent by proximity of power station and sugar beet factory.

VISUAL SUMMARY


The site impacts on the seating of adjacent ancient monuments, and Kelham Hall. It is crossed by 1 promoted right of way and forms part of the approach to historic core of Newark from the west.




KEY

- ★ High Point
- Site Boundary
- 2.5km Buffer Zone
- ZTV - 0m height
- ZTV - 4m height

Rev Status	Description	Drawn	Ch'd	Auth	D
Project					
Minerals Local Plan					
Property No.		Project No. HW00935			
Title					
Great North Road South					
As shown		Drawn CG		Date 23/03/	
		Ch'd Initials		Date 23/03/	
		Auth Initials		Traced	
Drawing No.				Rev	
HW00935/					



in partnership with

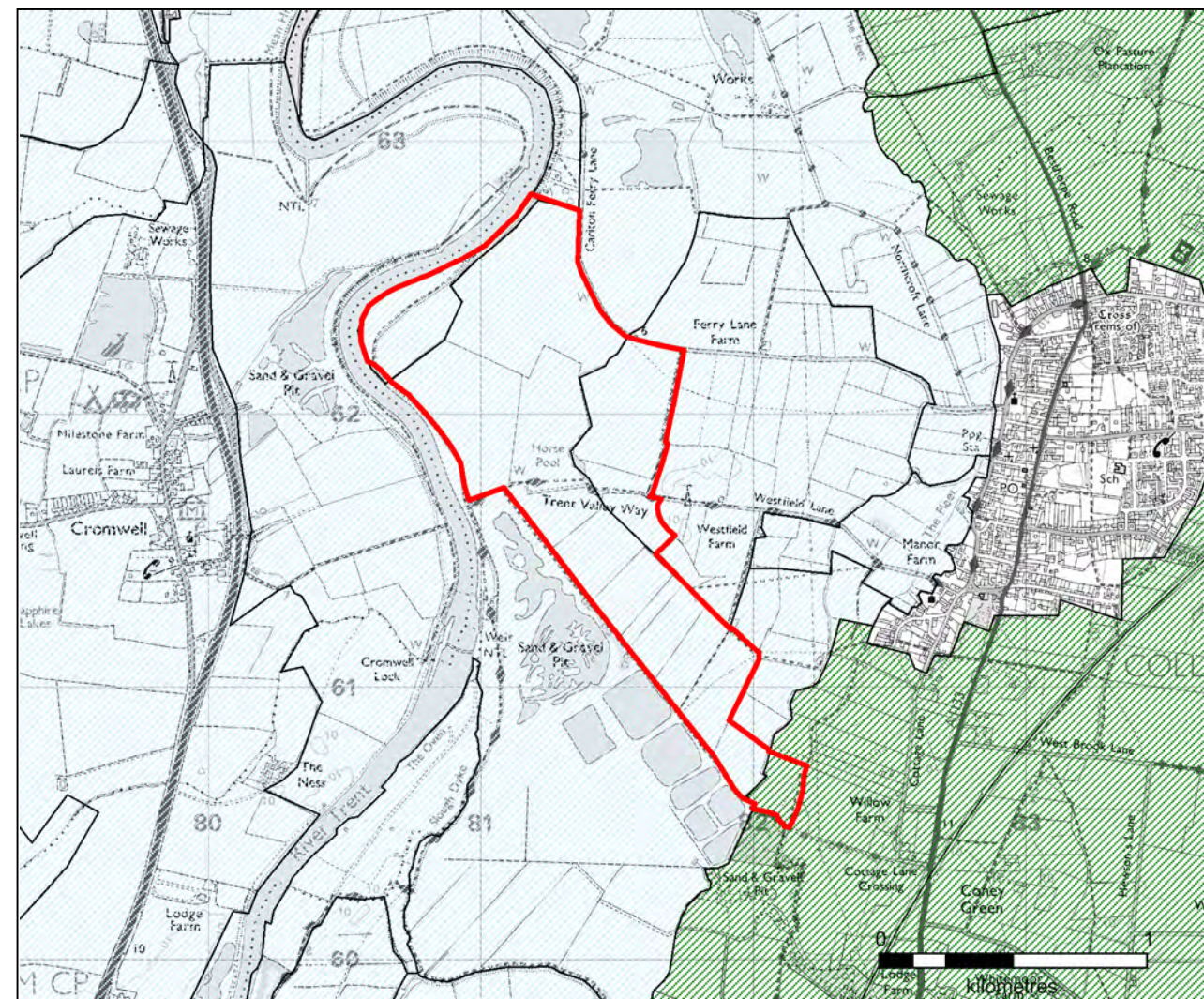
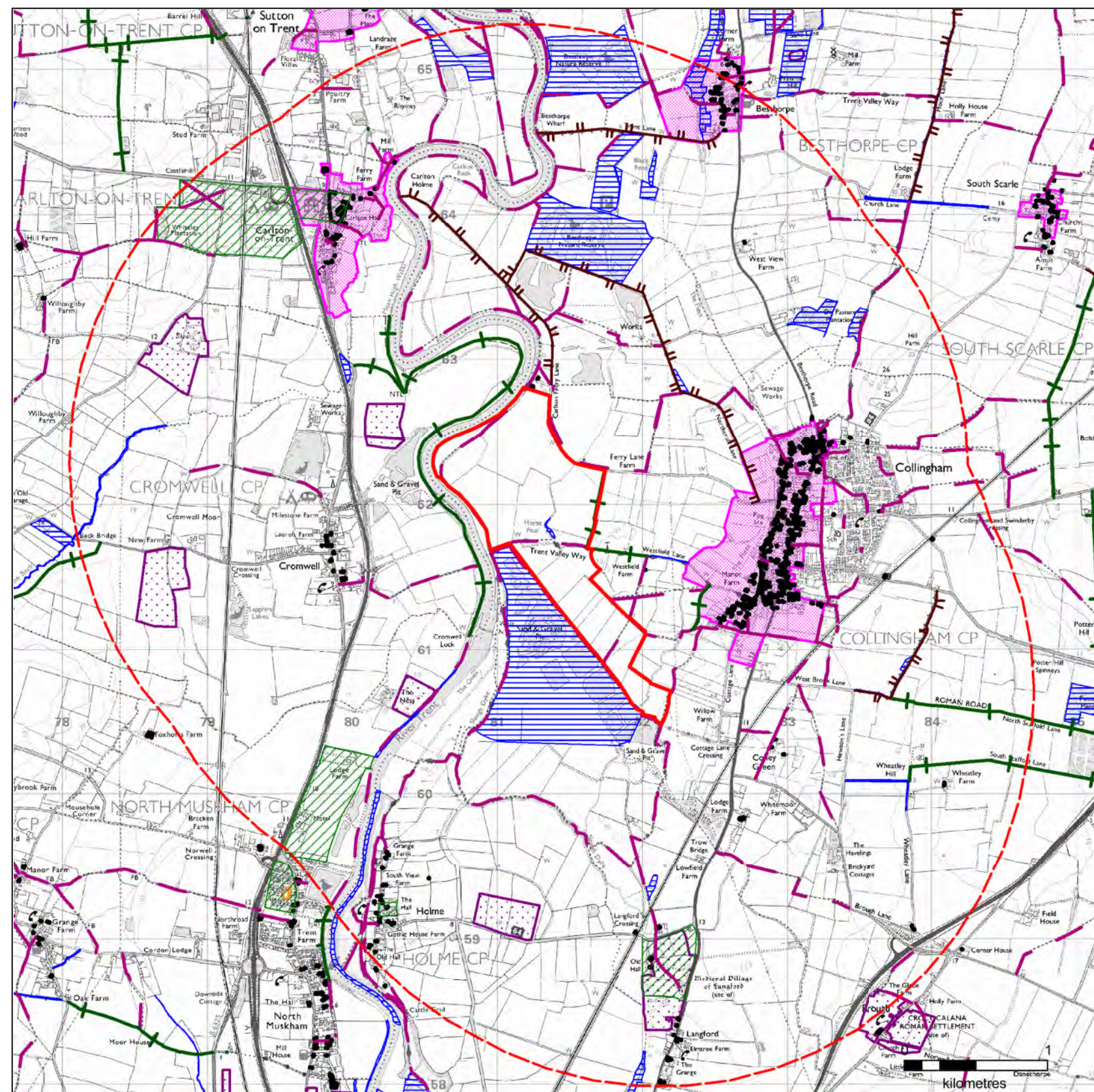


**Nottinghamshire
County Council**



www.viaem.co.uk Tel 01623 873873

Bilsthorpe Depot, Bilsthorpe Business Park
Bilsthorpe Nottinghamshire NG22 8ST

© Via East Midlands Limited, Registered in England no.09903246




Landscape Character Key

-  Trent Washlands
-  East Notts Sandlands


Designation Key

- | | | | | | | | | | |
|---|-------------------|---|------------------------|--|------------------------|---|--------------------------|---|-------------------------------|
|  | Site Boundary |  | RoW - Bridleway |  | Regional Parks Gardens |  | SINCSGeo |  | Historic And Listed Buildings |
|  | 2.5km Buffer Zone |  | Row - Footpath |  | NCC Parks Gardens |  | Local Nature Reserves |  | Scheduled Ancient Monuments |
| | |  | RoW - Restricted Byway |  | Green Estates |  | National Nature Reserves |  | Conservation Areas |
| | |  | RoW - BOAT |  | Local Wildlife Sites | | | | |

Rev Status	Description	Drawn	Ch'd	Auth.	Date
Project					
<h2 style="text-align: center;">Minerals Local Plan</h2>					
Property No.	Project No. HW00935				
<h2 style="text-align: center;">Langford North</h2>					
Scale	Drawn	AS	Date	23/03/11	
As shown	Ch'd	Initials	Date	23/03/11	
	Auth	Initials	Traced		
Drawing No.	HW00935/				Rev



in partnership with



**Nottinghamshire
County Council**

www.viaem.co.uk Tel 01623 873873
 Bilsthorpe Depot, Bilsthorpe Business Park
 Bilsthorpe Nottinghamshire NG22 8ST

© Via East Midlands Limited, Registered in England no.09903248

A large scale intensively managed agricultural landscape primarily in arable use. The River Trent meanders around the north-western site boundary. The site is flat apart from a low flood bund that follows the river. Langford Lowfields a former sand and gravel site restored to wetlands, reed beds, water channels and pools lies to the south-west. A working quarry Besthorpe Quarry lies to the north east of the site. This landscape is physically remote being away from Collingham and the main roads. Low level noise from A1 and working quarries is apparent.

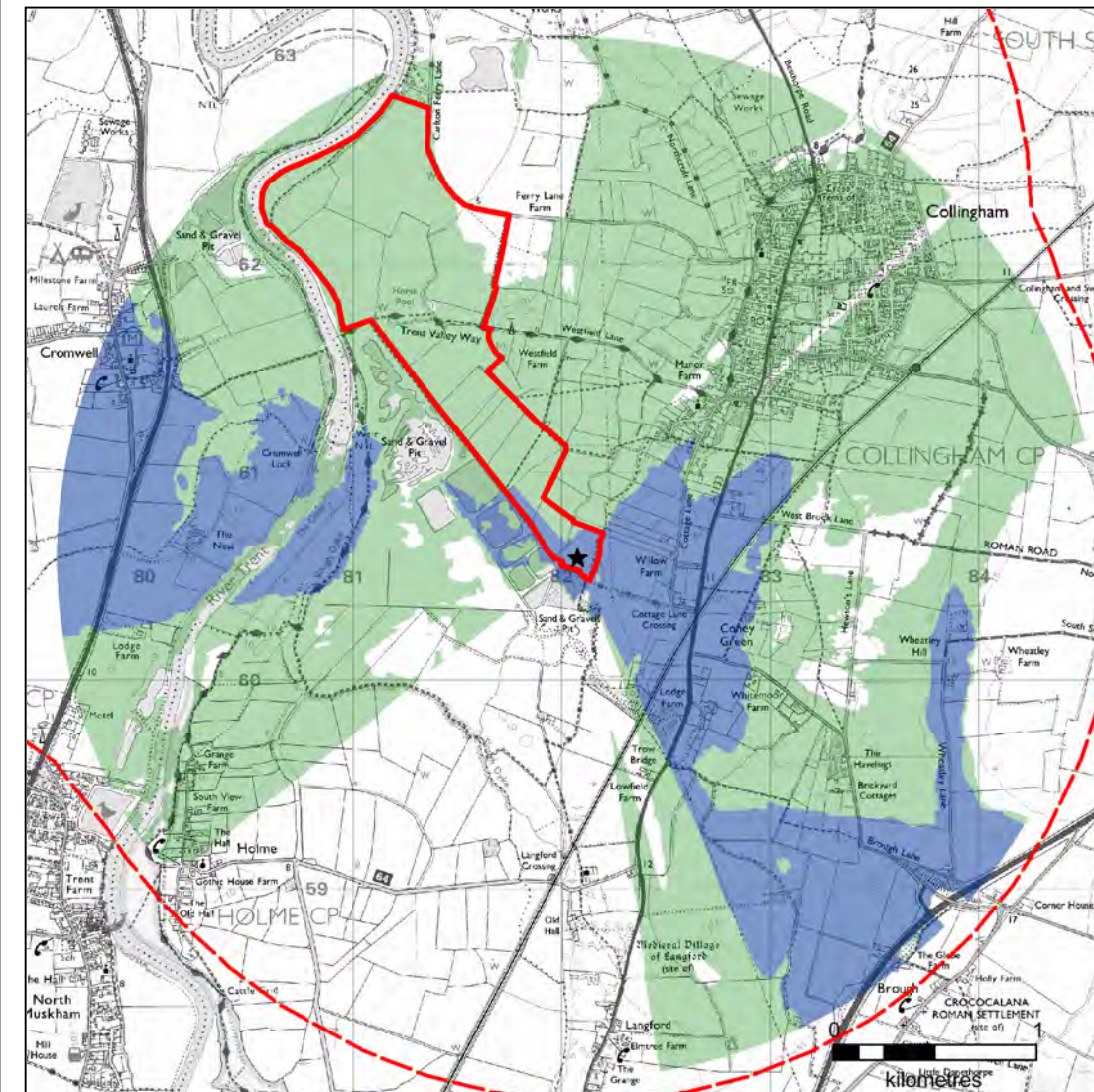
Several Public Rights of Way pass through this site from which there are close direct views. There are distant views from a few adjacent properties including Wharf Cottage. Where hedgerows contain trees and are tall and outgrown, such as along the footpath on the south-western boundary, views north are largely screened.







View north from along flood bund across low lying improved grasslands within Carlton River Meadowlands.



View east from footpath south of Carlton Ferry Lane. Tree lined hedgerow fringes water course that extends down to Horse Pool. Large intensive arable fields with occasional small areas of sheep grazed pasture.

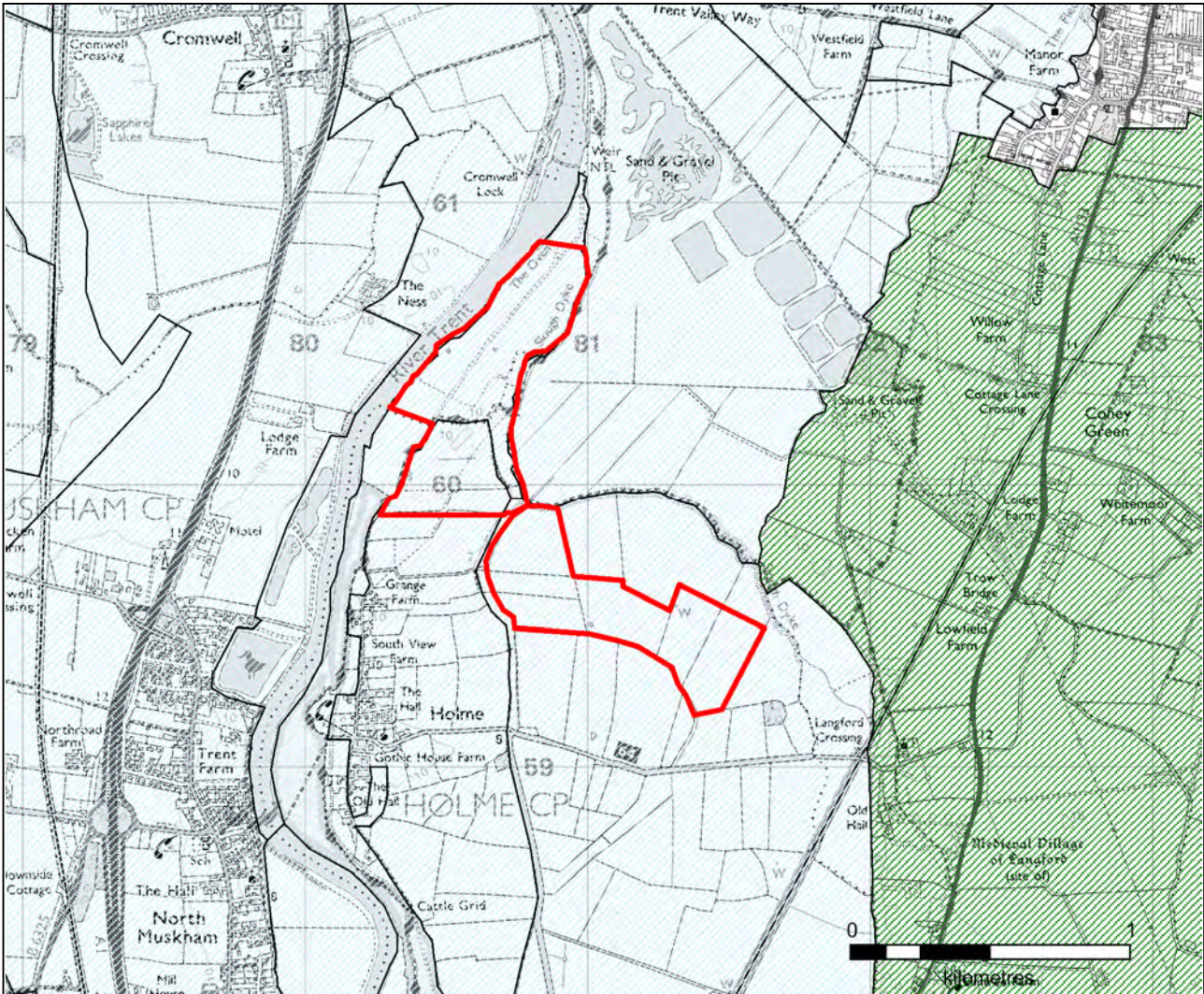
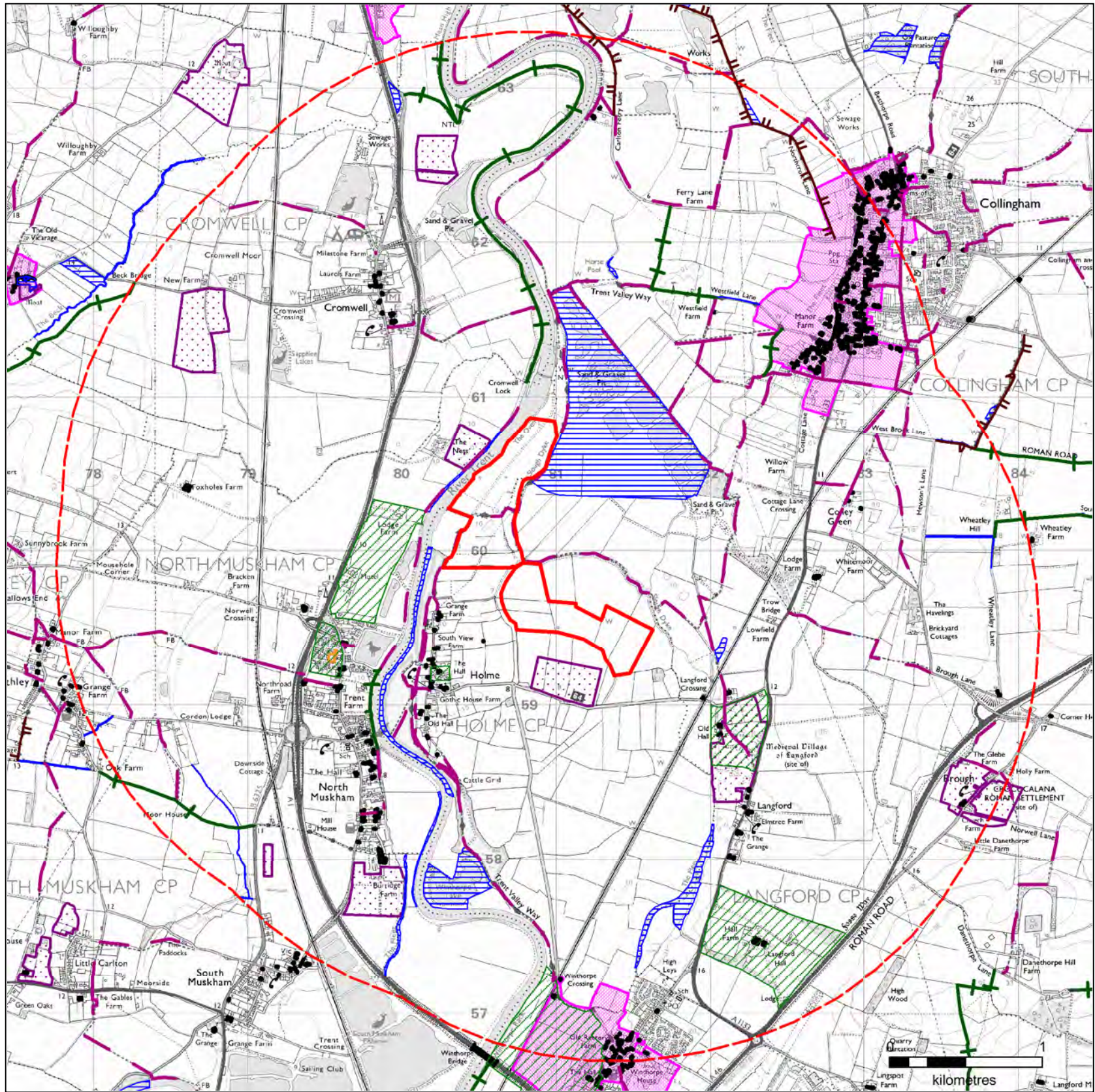


★ High Point

 Site Boundary
 2.5km Buffer Zone
 ZTV - 0m height
 ZTV - 4m height

Rev Status	Description	Drawn	Ch'kd	Auth	Date
Project					
<div> <div>Minerals Local Plan</div> </div>					
Property No.		Project No.			
		HW00935			
Title					
<div> <div>Langford North</div> </div>					
Scale		Drawn			Date
		AS			23/03/18
		Ch'kd			Date
		Initials			23/03/18
As shown		Auth		Traced	
		Initials			
Drawn No.		Rev			
<div> <div>HW00935/</div> </div>					






Landscape Character Key

- Trent Washlands
- East Notts Sandlands

Designation Key

- Site Boundary
- 2.5km Buffer Zone
- RoW - Bridleway
- Row - Footpath
- RoW - Restricted Byway
- RoW - BOAT
- Regional Parks Gardens
- NCC Parks Gardens
- Green Estates
- Local Wildlife Sites
- SINCsgo
- Local Nature Reserves
- National Nature Reserves
- Historic And Listed Buildings
- Scheduled Ancient Monuments
- Conservation Areas

Rev	Status	Description	Drawn	Chkd	Auth	Date
Project						
Minerals Local Plan						
Property No.		Project No. HW00935				
Title						
Langford South & West						
Scale						
As shown		Drawn AS		Date 23/03/18		
		Chkd Initials		Date 23/03/18		
		Auth Initials		Traced		
Drawing No.						
HW00935/						
 In partnership with Nottinghamshire County Council						
www.viaem.co.uk Tel 01623 873873						
Bilthorpe Depot, Bilthorpe Business Park						
Bilthorpe Nottinghamshire NG22 8ST						
© Via East Midlands Limited, Registered in England no.09903246						

LANDSCAPE SUMMARY

The majority of Langford west is a stretch of closely grazed river pasture that lies adjacent to the River Trent with a medium sized arable field to the south of this. Langford South is a series of medium sized arable fields and hawthorn hedges. A narrow tree belt and hedgerow along Slough Dyke contains views into the existing minerals site.

VISUAL SUMMARY

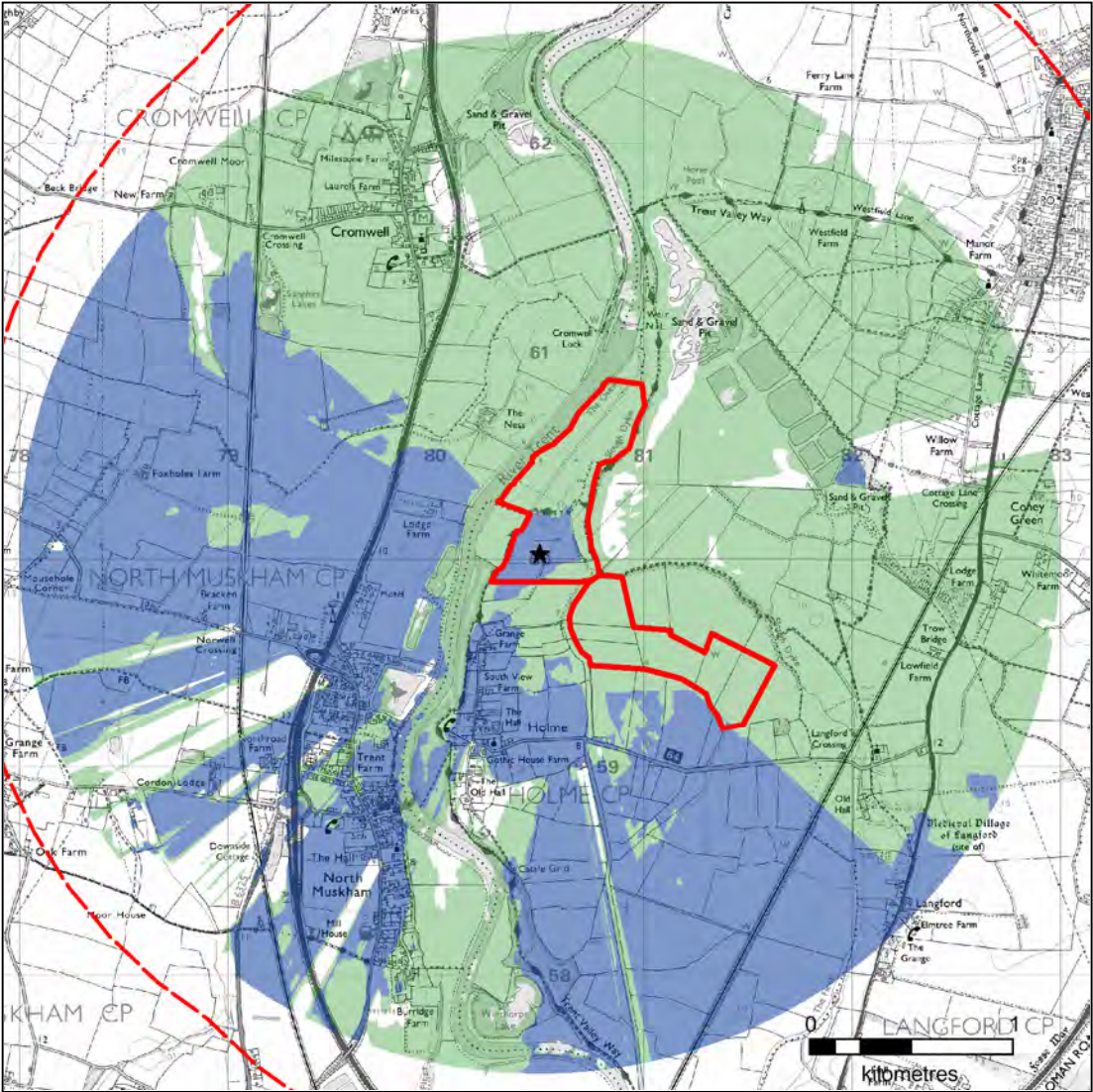
A few properties to the eastern edge of Holme have views north east across the surrounding farmland. A1 traffic and existing mineral sites impart a sense of a working landscape despite its remote location within the Trent Valley. Views are predominantly from Public Rights of Way, such as the Trent Valley Way that passes through in a north to south direction along the River bank.



Langford West: View north from footpath across semi improved pasture lying adjacent to the river. Remnant hedgerows evident as outgrown hawthorn trees.



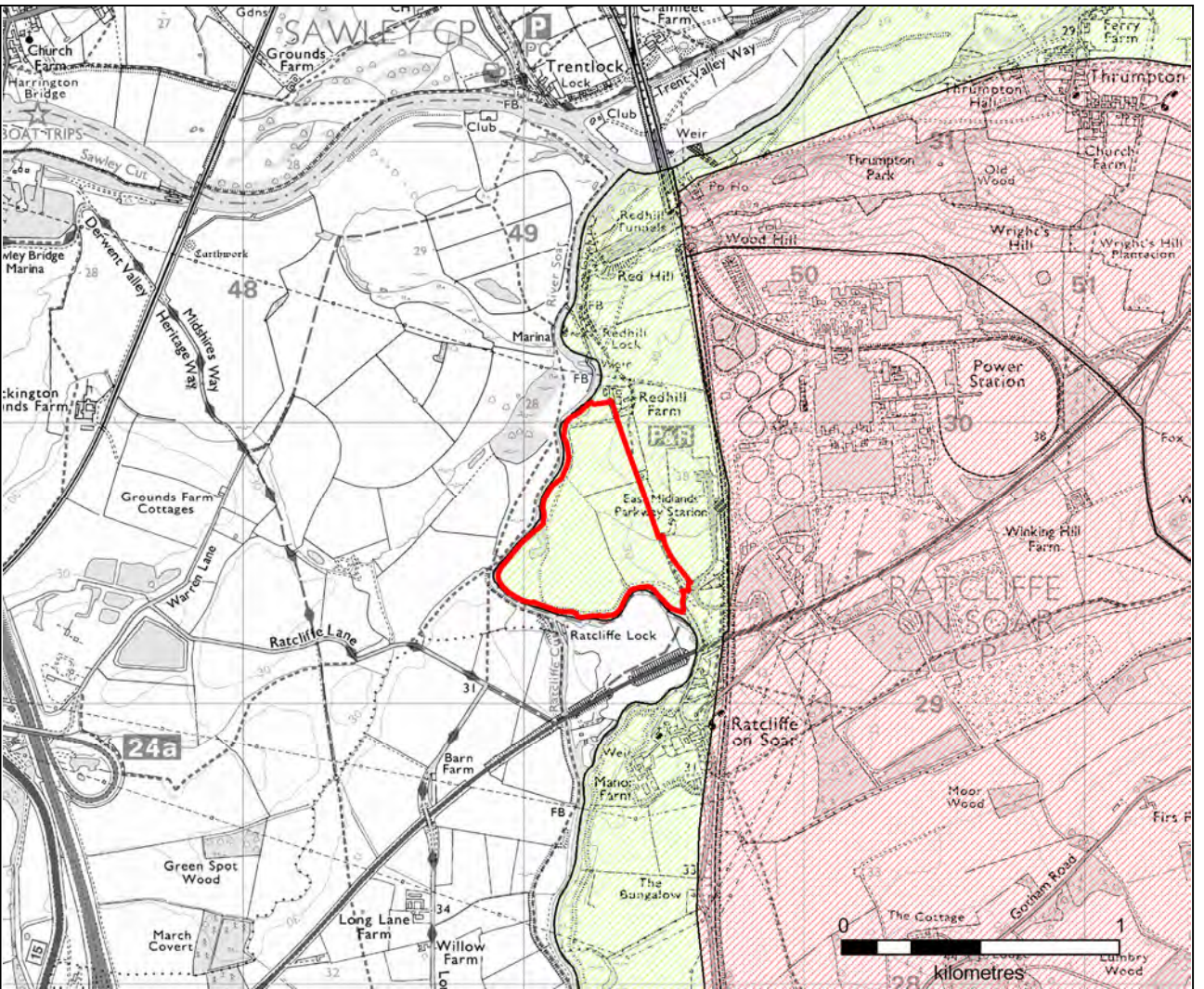
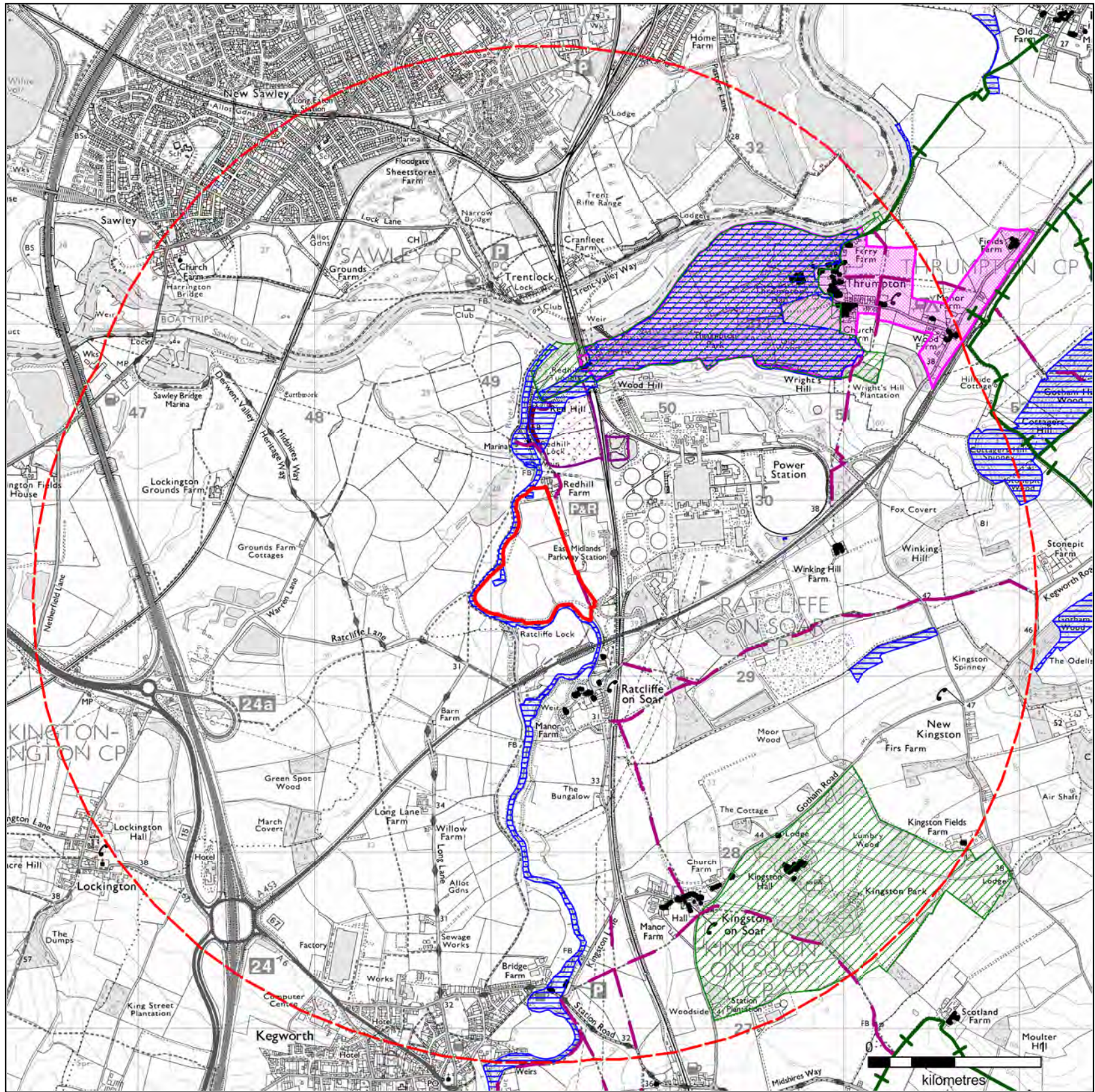
Langford South: View north west across flat low lying arable land from Holme Lane that lies adjacent to the site. Overlapping hedgerows in the middle-distance screen the fields within the site from Holme Lane.



KEY

- ★ High Point
- Site Boundary
- 2.5km Buffer Zone
- ZTV - 0m height
- ZTV - 4m height

Rev	Status	Description	Drawn	Chkd	Auth	Date
Project						
Minerals Local Plan						
Property No.		Project No. HW00935				
Title						
Langford South & West						
Scale		Drawn AS		Date 23/03/18		
As shown		Chkd Initials		Date 23/03/18		
		Auth Initials		Traced		
Drawing No. HW00935/						
Rev						
via in partnership with Nottinghamshire County Council						
www.viaem.co.uk Tel 01623 873873						
Bilthorpe Depot, Bilthorpe Business Park						
Bilthorpe Nottinghamshire NG22 8ST						
© Via East Midlands Limited, Registered in England no.09903246						



Landscape Character Key

- Nottinghamshire Wolds
- Trent Valley

Designation Key

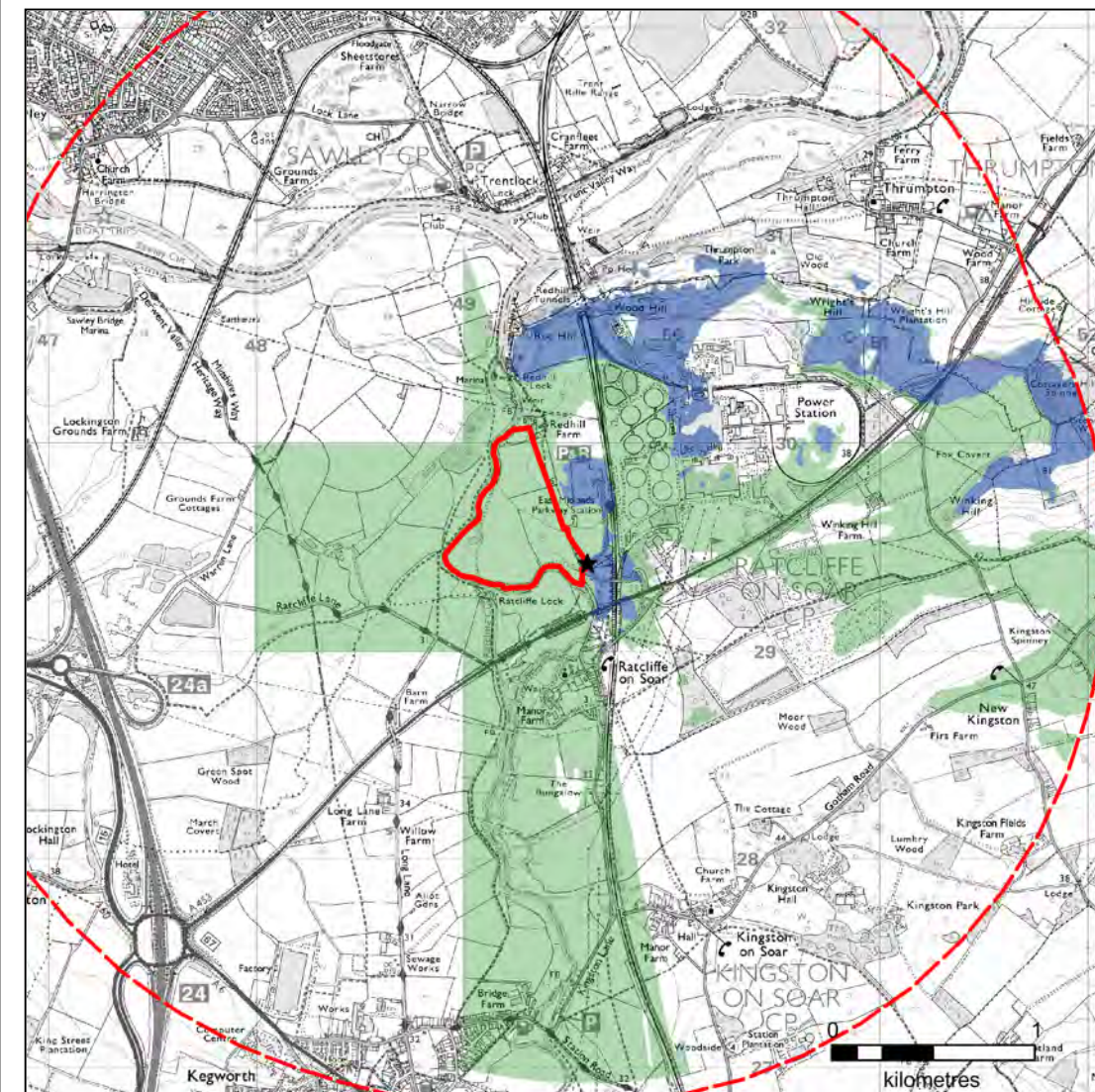
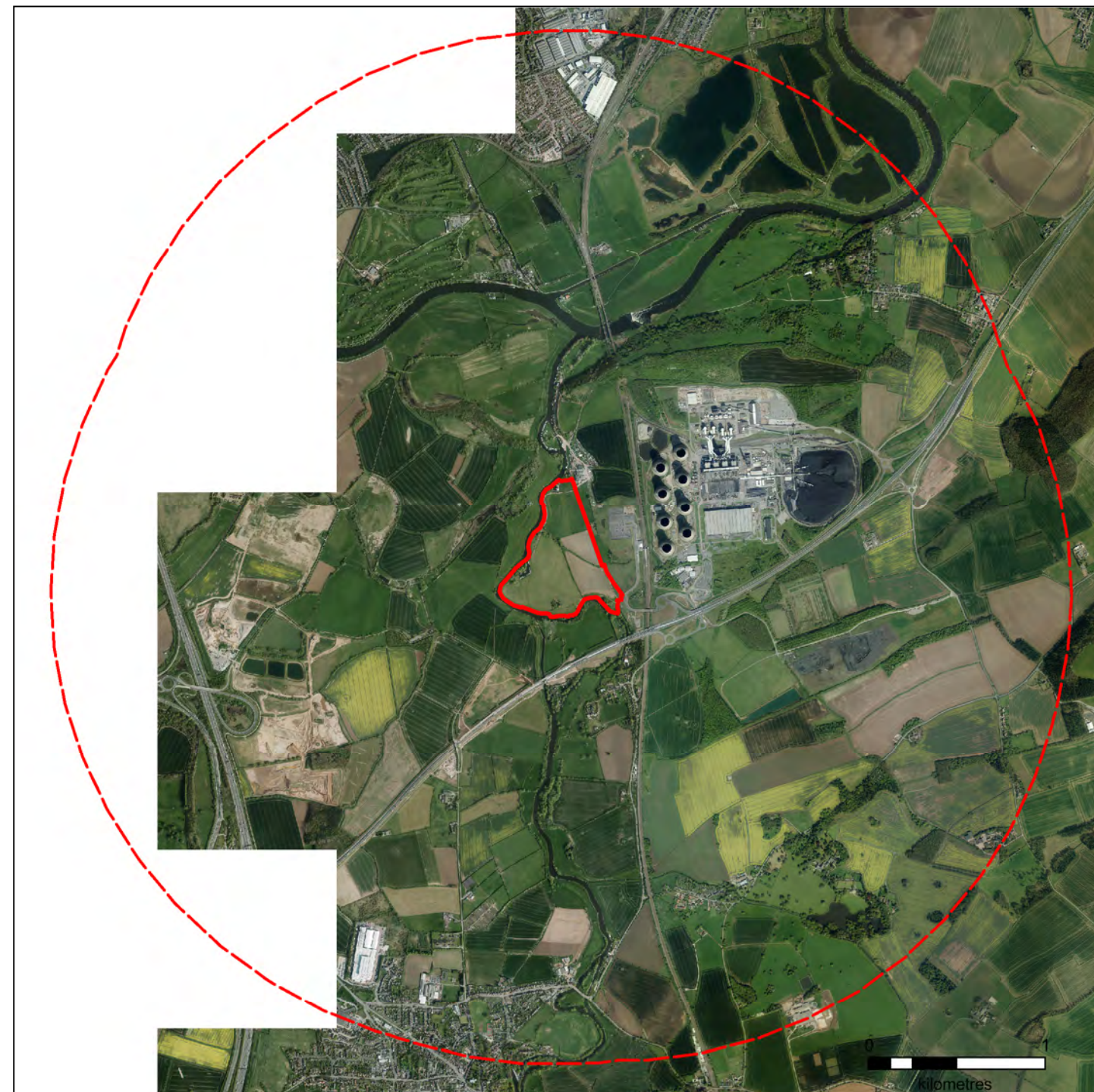
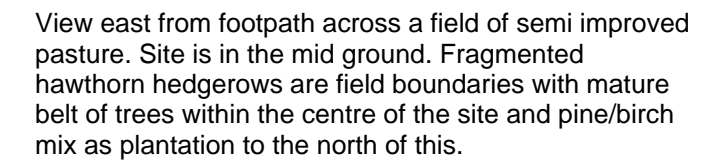
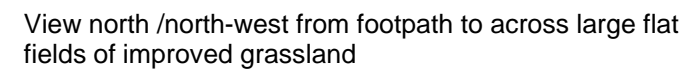
- Site Boundary
- 2.5km Buffer Zone
- RoW - Bridleway
- Row - Footpath
- RoW - Restricted Byway
- RoW - BOAT
- Regional Parks Gardens
- NCC Parks Gardens
- Green Estates
- Local Wildlife Sites
- SINCSGeo
- Local Nature Reserves
- National Nature Reserves

- Historic And Listed Buildings
- Scheduled Ancient Monuments
- Conservation Areas


Rev	Status	Description	Drawn	Chkd	Auth	Date
Project						
Minerals Local Plan						
Property No.		Project No. HW00935				
Title						
Redhill						
Scale						
As shown		Drawn AS		Date 23/03/18		
		Chkd Initials		Date 23/03/18		
		Auth Initials		Traced		
Drawing No.						
HW00935/						
In partnership with						
via Nottinghamshire County Council						
www.viaem.co.uk Tel 01623 873873						
Bilthorpe Depot, Bilthorpe Business Park						
Bilthorpe Nottinghamshire NG22 8ST						
© Via East Midlands Limited, Registered in England no.0903246						


A low lying large scale improved grassland landscape with meanders of River Soar forming the site's western boundary. The river corridor is a local wildlife site and along its eastern bank are moored boats that are accessed by a track along the flood bund from Redhill Marina directly north of the site. Riparian trees and scrub occurs intermittently along the River Bank and a field pond lies within the southern area of the site.

Site is visually contained by large scale cooling towers of Ratcliffe Power Station to the east of the site. Infrastructure dominates the eastern and southern boundaries with A453 and East Midlands Parkway station and Park and Ride and access road overlooking the site. Views from public footpaths both east and west of the site. Redhill Farm and Middlegate cottage also overlook parts of the site.



★ High Point

 Site Boundary

 2.5km Buffer Zone

 ZTV - 0m height

 ZTV - 4m height

Rev	Description	Drawn	Ch'kd	Auth	Date
Project					

Minerals Local Plan

Property No.	Project No. HW00935
--------------	------------------------

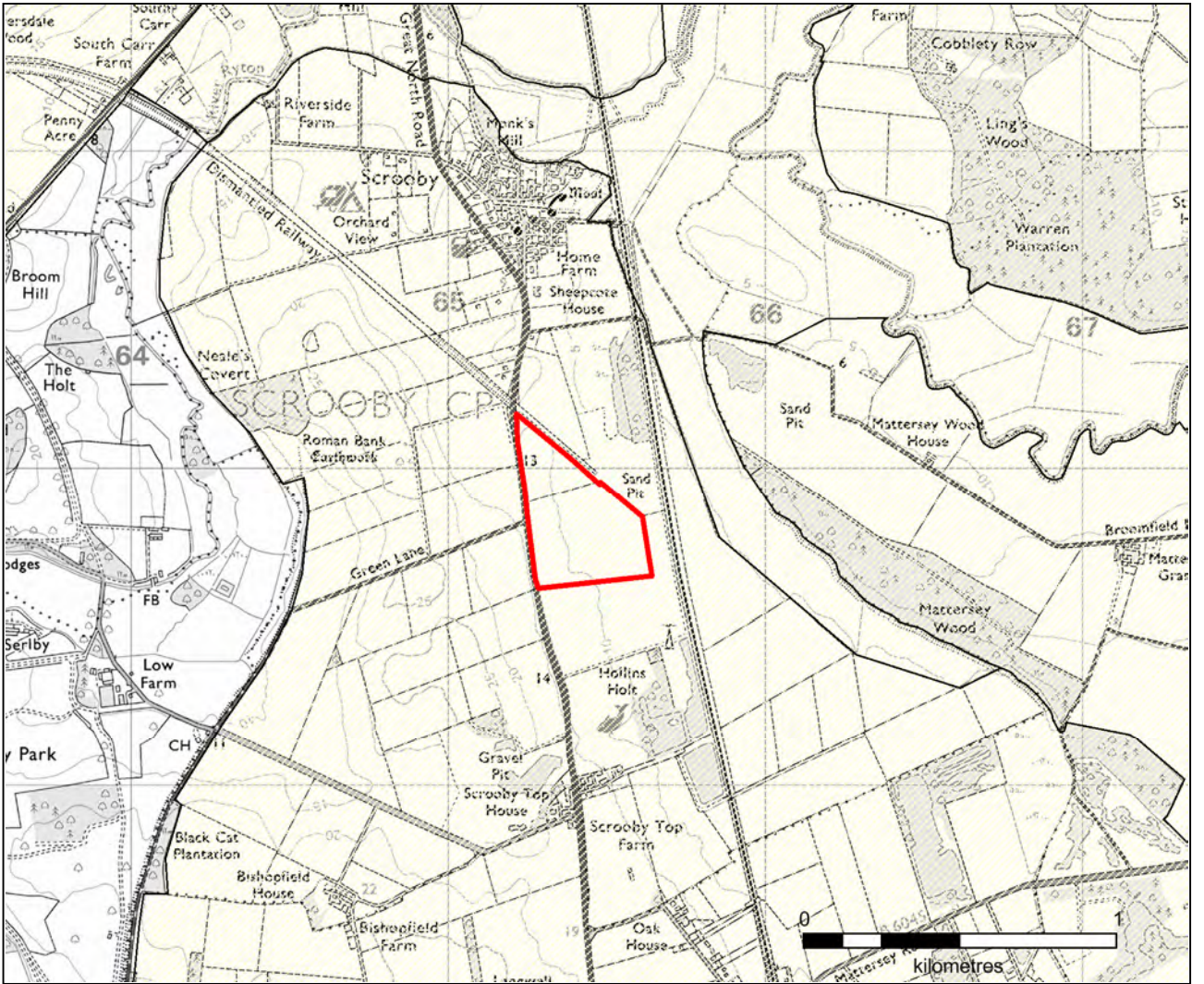
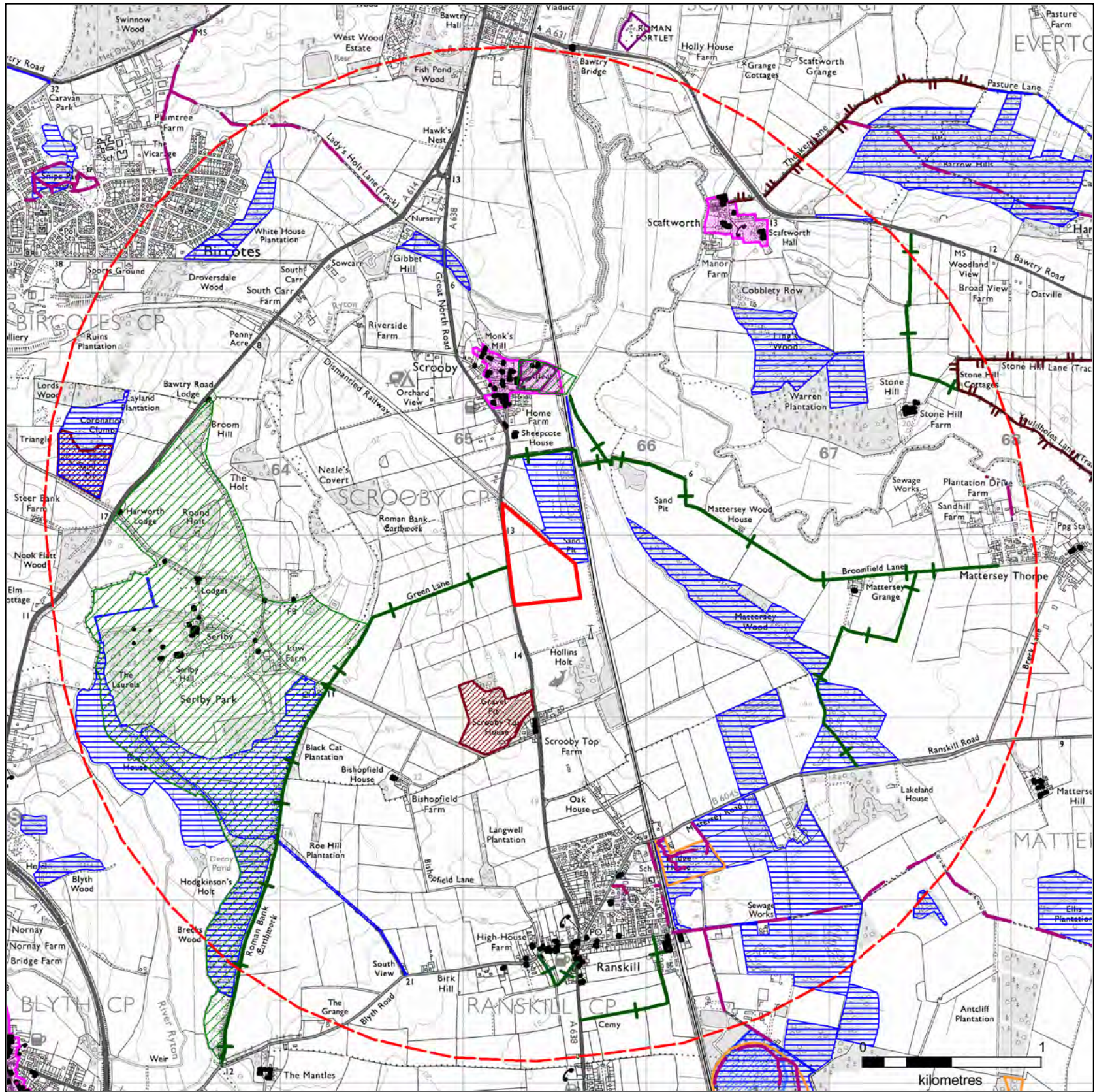
Redhill

Scale	Drawn		Date
	AS		23/03/18
	Child		Date
As shown	Initials		23/03/18
	Auth	Initials	Traced


Drawing No.		Rev
-------------	--	-----

HW00935/






Landscape Character Key

 Humberhead Levels


Designation Key

 Site Boundary

 2.5km Buffer Zone

 RoW - Bridleway


 Row - Footpath

 RoW - Restricted Byway

 RoW - BOAT


 Regional Parks Gardens


 NCC Parks Gardens


 Green Estates


 Local Wildlife Sites


 SINCSGeo

 Local Nature Reserves

 National Nature Reserves

 Historic And Listed Buildings

 Scheduled Ancient Monuments

 Conservation Areas

Rev	Status	Description	Drawn	Ch'd	Auth	Date
Project						

Minerals Local Plan

Property No.	Project No.
	HW00935

Title
Scrooby North

Scale	Drawn	HJ	Date	23/03/18
As shown	Ch'd	Initials	Date	23/03/18
	Auth	Initials	Traced	

Drawing No.	Rev
HW00935	

 In partnership with

www.viaem.co.uk Tel 01623 873873
Bilthorpe Depot, Bilthorpe Business Park
Bilthorpe Nottinghamshire NG22 8ST



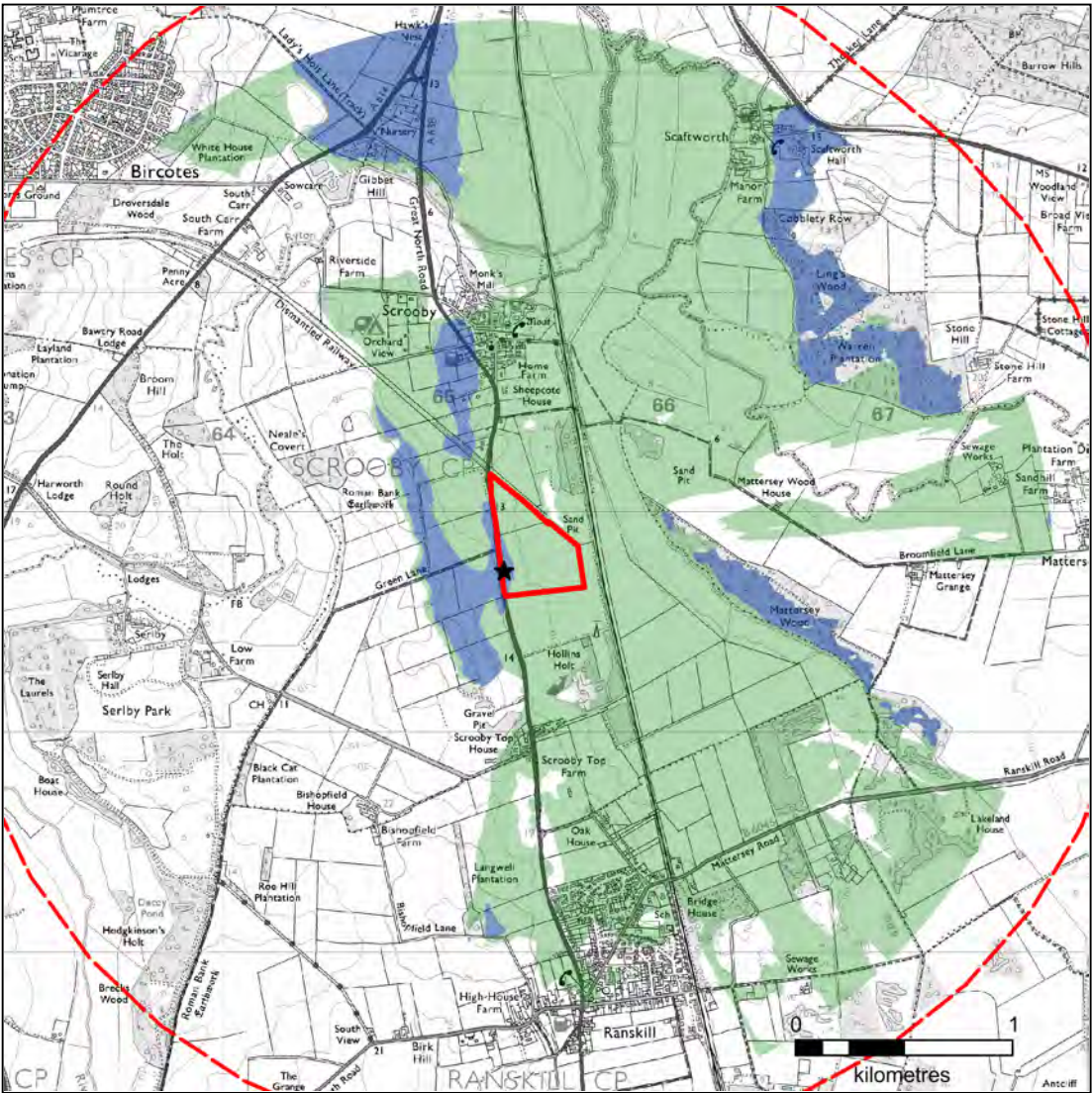
View looking East across application area towards ECML, from A638 Retford Road



View looking North east across application area towards ECML, from A638 Retford Road


LANDSCAPE SUMMARY
The main landscape impact will be the loss of landscape with characteristic features of IL10, including hedgerows with isolated mature trees.

VISUAL SUMMARY
Serlby Park woodland to the west and the ridgeline to the north east help to screen views of the site from distant points. There are no close residential receptors, and views from Scrooby are unlikely due to intervening vegetation. The main visual impact is on travellers on the adjacent A638 and ECML




- KEY**
- ★ High Point
 - Site Boundary
 - 2.5km Buffer Zone
 - ZTV - 0m height
 - ZTV - 4m height

Rev Status	Description	Drawn	Chkd	Auth	Date
Project					
Minerals Local Plan					
Property No.		Project No.			
		HW00935			
Title					
Scrooby North					
Scale	Drawn		HJ		Date
As shown	Chkd		Initials		Date
					23/03/18
	Auth		Initials		Traced
Drawing No.		Rev			
		HW00935			



in partnership with

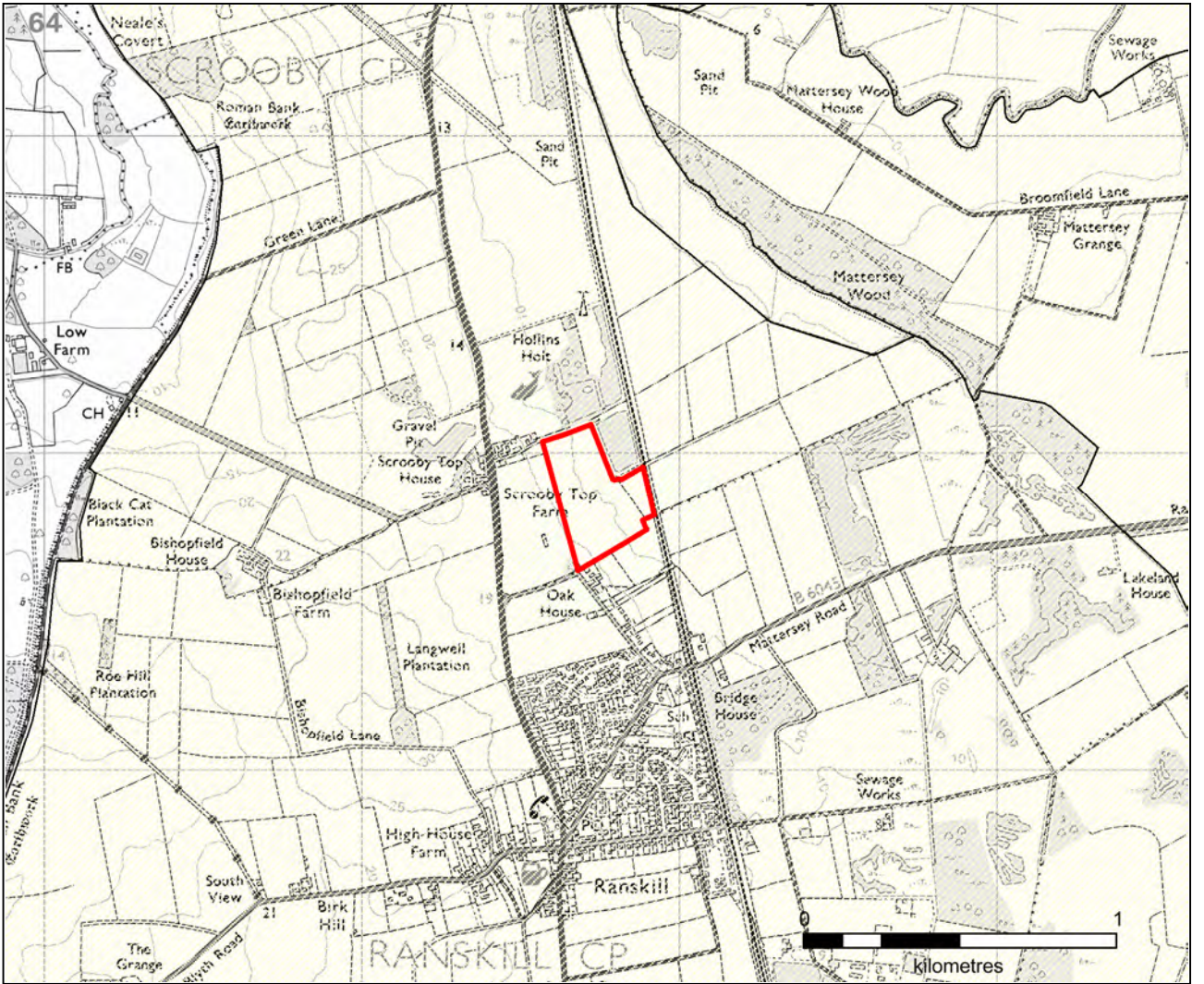
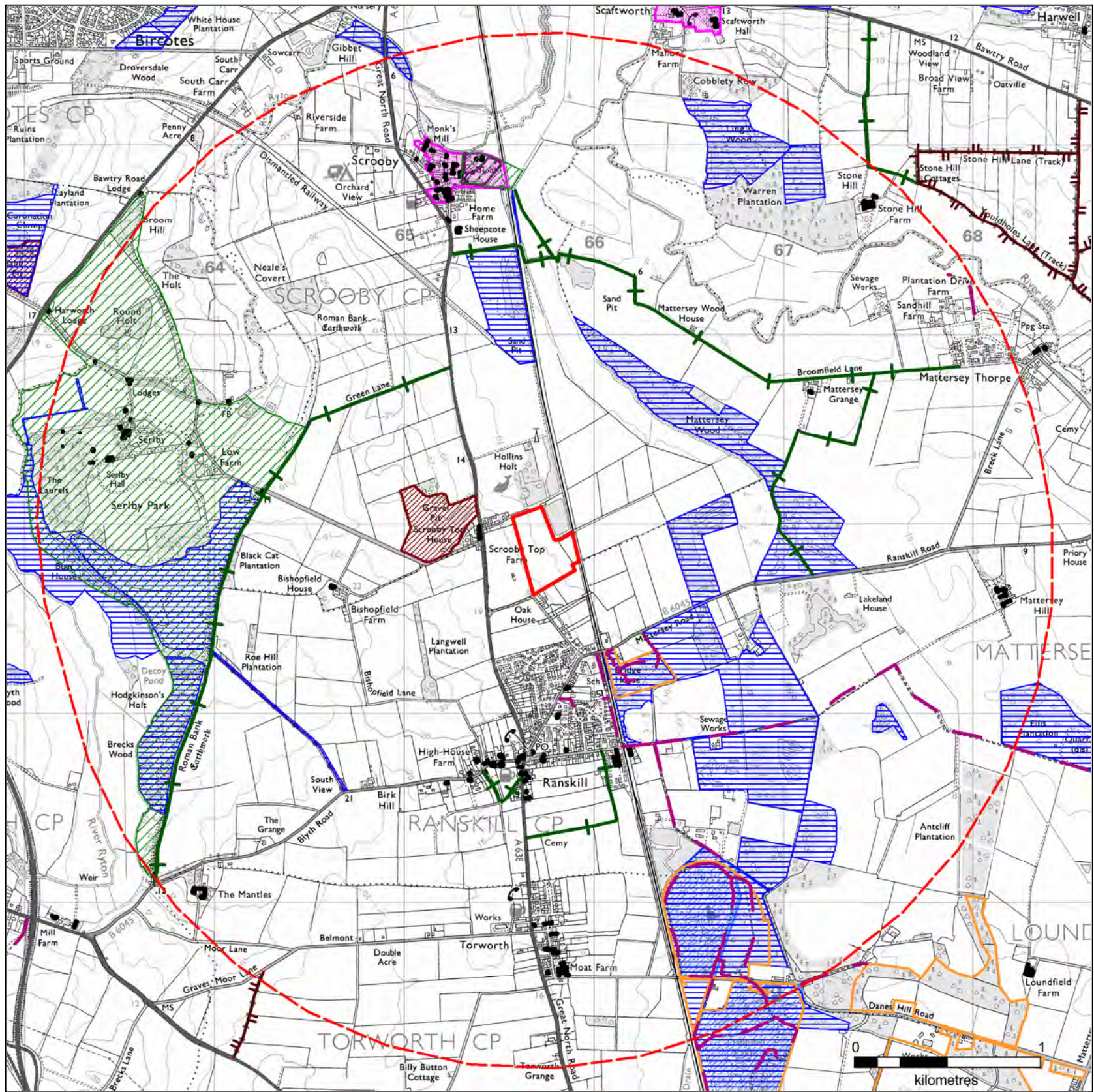


**Nottinghamshire
County Council**


www.viaem.co.uk Tel 01623 873873

Bilsthorpe Depot, Bilsthorpe Business Park
Bilsthorpe Nottinghamshire NG22 8ST

© Via East Midlands Limited, Registered in England no.09903246





Landscape Character Key

 Humberhead Levels

Designation Key

 Site Boundary

 2.5km Buffer Zone

 RoW - Bridleway

 Row - Footpath

 RoW - Restricted Byway


 RoW - BOAT

 Regional Parks Gardens


 NCC Parks Gardens


 Green Estates


 Local Wildlife Sites


 SINCSGeo

 Local Nature Reserves

 National Nature Reserves

 Historic And Listed Buildings

 Scheduled Ancient Monuments

 Conservation Areas

Rev Status	Description			Drawn	Ch'kd	Auth Date
Project						
Minerals Local Plan						
Property No.		Project No. HW00935				
Title						
Srooby Thompson Land						
Scale		Drawn HJ			Date 23/03/18	
As shown		Ch'kd Initials			Date 23/03/18	
		Auth Initials			Traced	
Drawing No.						

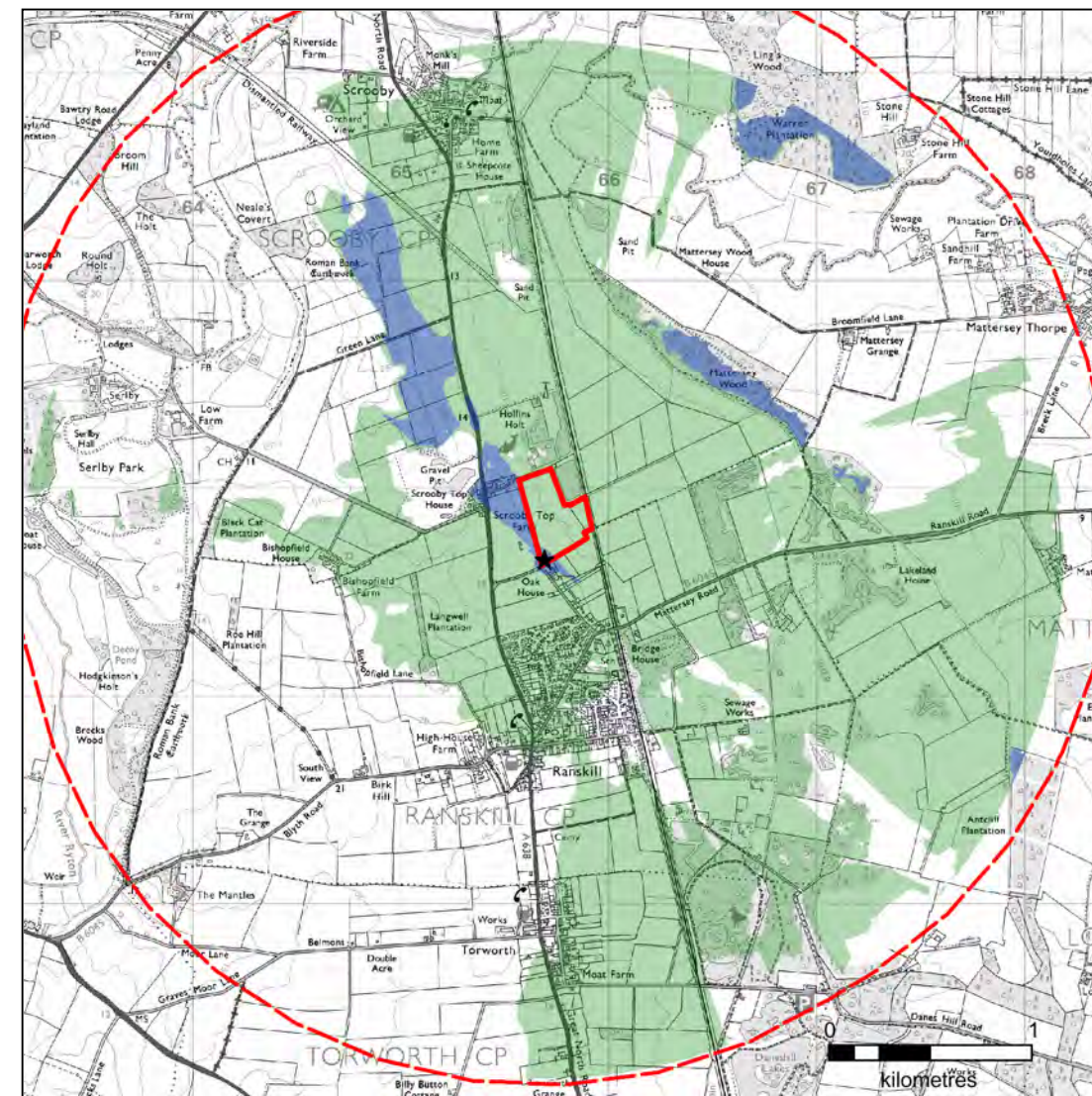


LANDSCAPE SUMMARY





The main landscape impact will be the loss of characteristic features of IL 10, including hedgerow removal with isolated mature trees.

VISUAL SUMMARY

Serlby Park woodland to the west and ridgeline to the north east help to screen views of the site from distant views. The main visual impacts are open views from the rear of several residential properties, and impact on travellers on A638 and the ECML.



KEY

- ★ High Point
-  Site Boundary
-  2.5km Buffer Zone
-  ZTV - 0m height
-  ZTV - 4m height

Rev Status	Description	Drawn	Ch'd	Auth	Date
Project					
Minerals Local Plan					
Property No.		Project No.			
		HW00935			
Title					
Srooby Thompson Land					
Scale		Drawn		Date	
As shown		HJ		23/03/18	
		Ch'd		Date	
		Initials		23/03/18	
Auth		Initials		Traced	
Drawing No.		Rev			
HW00935					

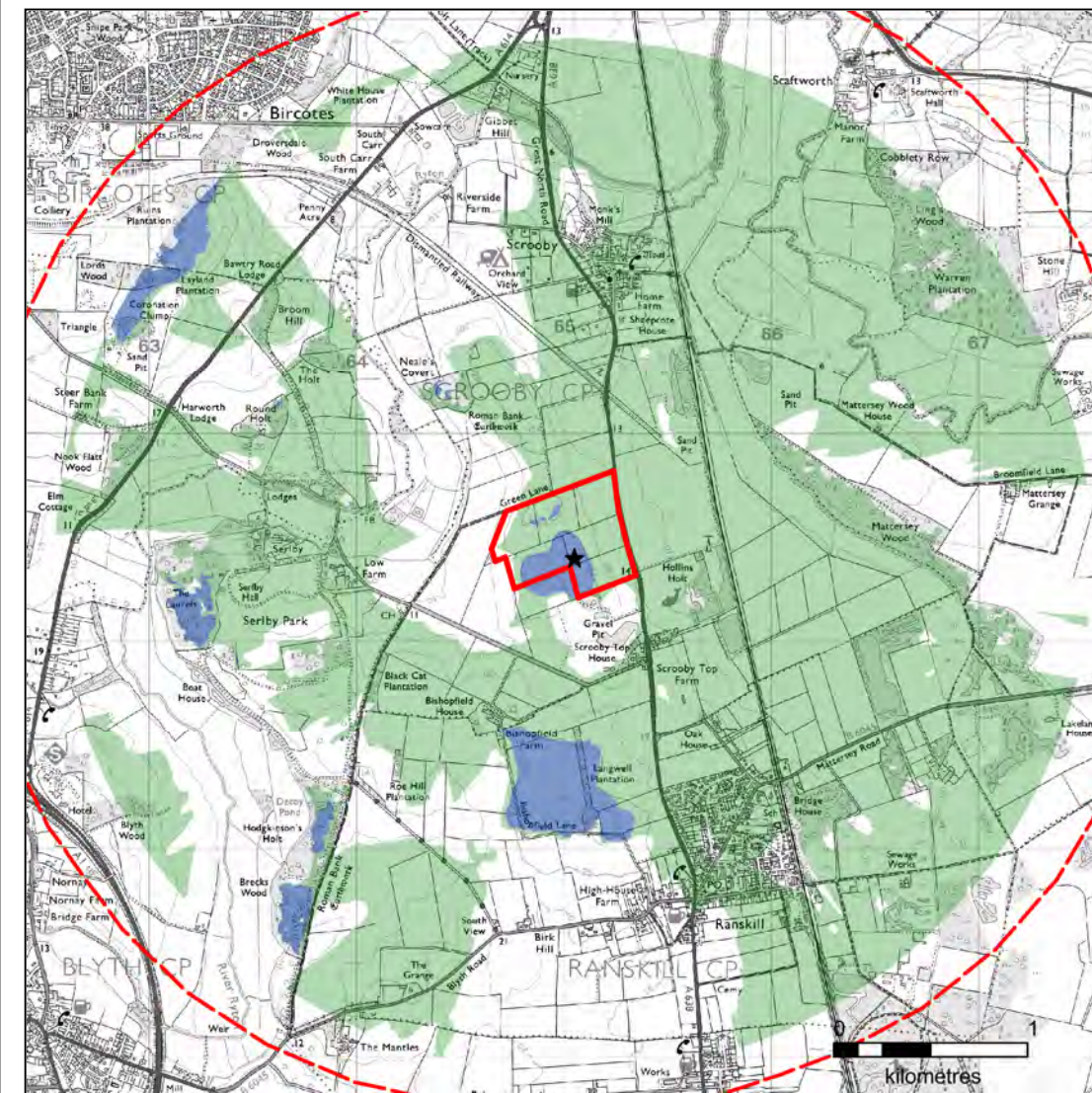


LANDSCAPE SUMMARY





The main landscape impact will be the loss of landscape with characteristic features of IL10, such as hedgerows with isolated mature trees, and potentially the mature hedgerow to Green Lane (bridleway)

VISUAL SUMMARY

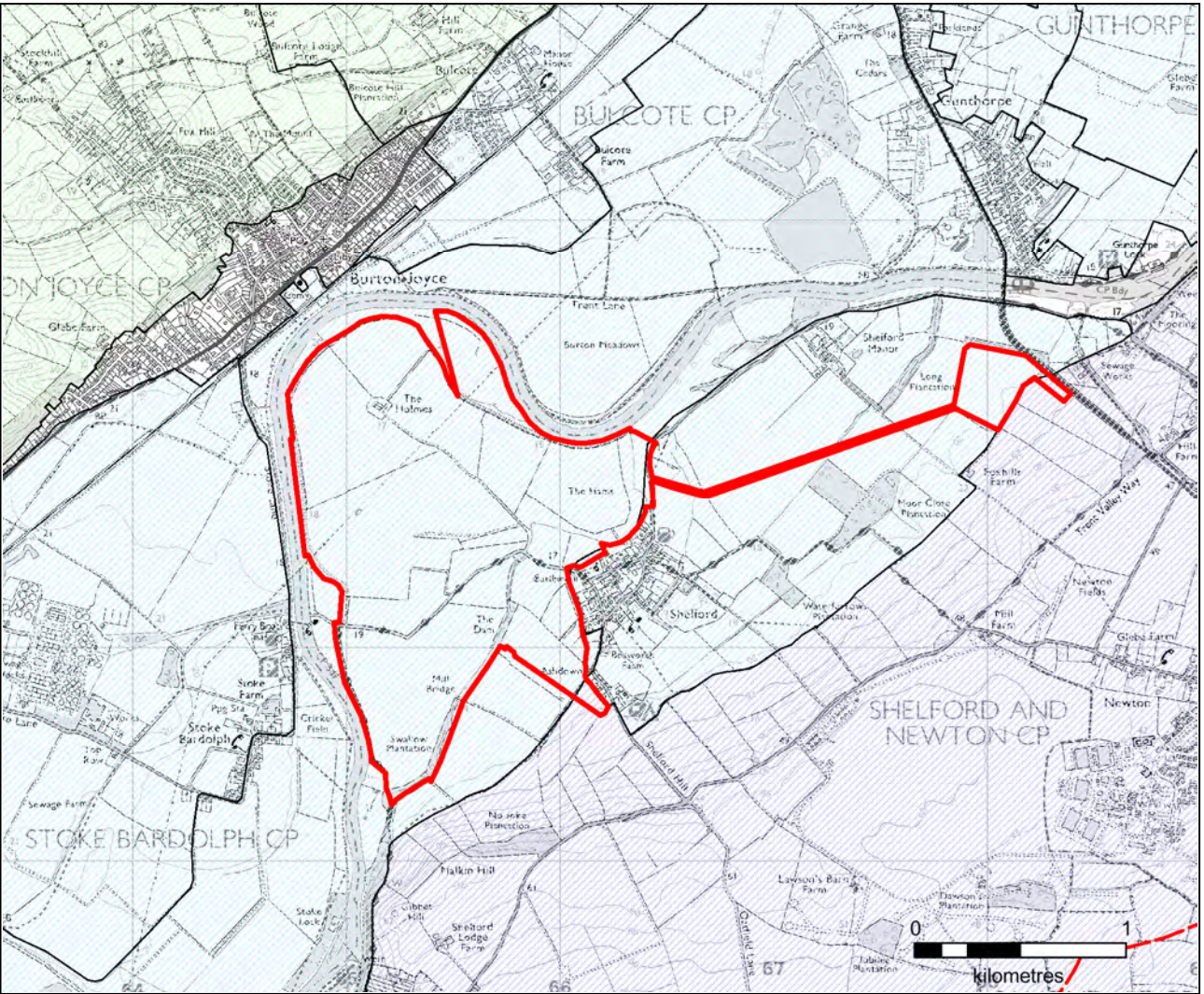
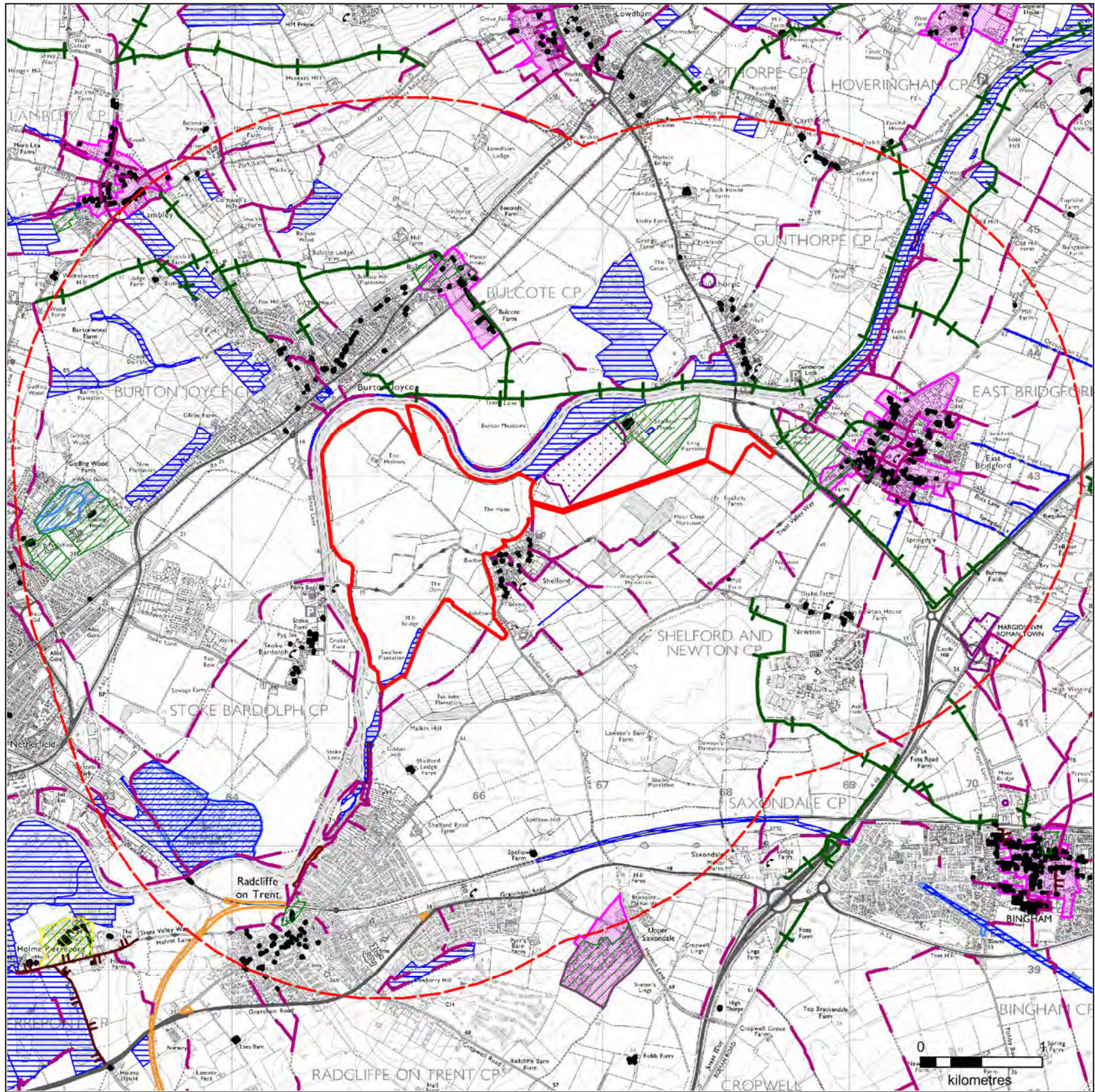
Serlby Park woodland to the west and ridgeline to the north east help to screen views of the site from distant views, there are no close residential properties, views from Scrooby unlikely due to intervening vegetation. The main visual impacts will be on traveller receptors on the A638 and ECML, as well as the Bridleway to the north.



KEY

- ★ High Point
-  Site Boundary
-  2.5km Buffer Zone
-  ZTV - 0m height
-  ZTV - 4m height

Rev Status	Description				Drawn	Ch'd	Auth	Date	
Project									
<h1>Minerals Local Plan</h1>									
Property No.		Property No.							
		HW00935							
Title									
<h1>Scrooby Top North</h1>									
Scale As shown		Drawn				HJ		Date	
		Ch'd				Initials		23/03/18	
		Auth				Initials		Date	
				Traced		23/03/18			
Drawing No.		Rev							
		HW00935							



Landscape Character Key

- South Notts Farlands
- Mid Notts
- Trent Washlands

Designation Key

- Site Boundary
- 2.5km Buffer Zone
- RoW - Bridleway
- Row - Footpath
- RoW - Restricted Byway
- RoW - BOAT
- Regional Parks Gardens
- NCC Parks Gardens
- Green Estates
- Local Wildlife Sites
- SINCSGeo
- Local Nature Reserves
- National Nature Reserves

- Historic And Listed Buildings
- Scheduled Ancient Monuments
- Conservation Areas

Rev	Status	Description	Drawn	Chkd	Auth	Date
Project						
Minerals Local Plan						
Property No.		Project No. HW00935				
Title						
Shelford						
Scale		Drawn NA			Date 23/03/18	
As shown		Chkd Initials			Date 23/03/18	
		Auth Initials		Traced		
		Drawing No.				
Rev						
HW00935/						



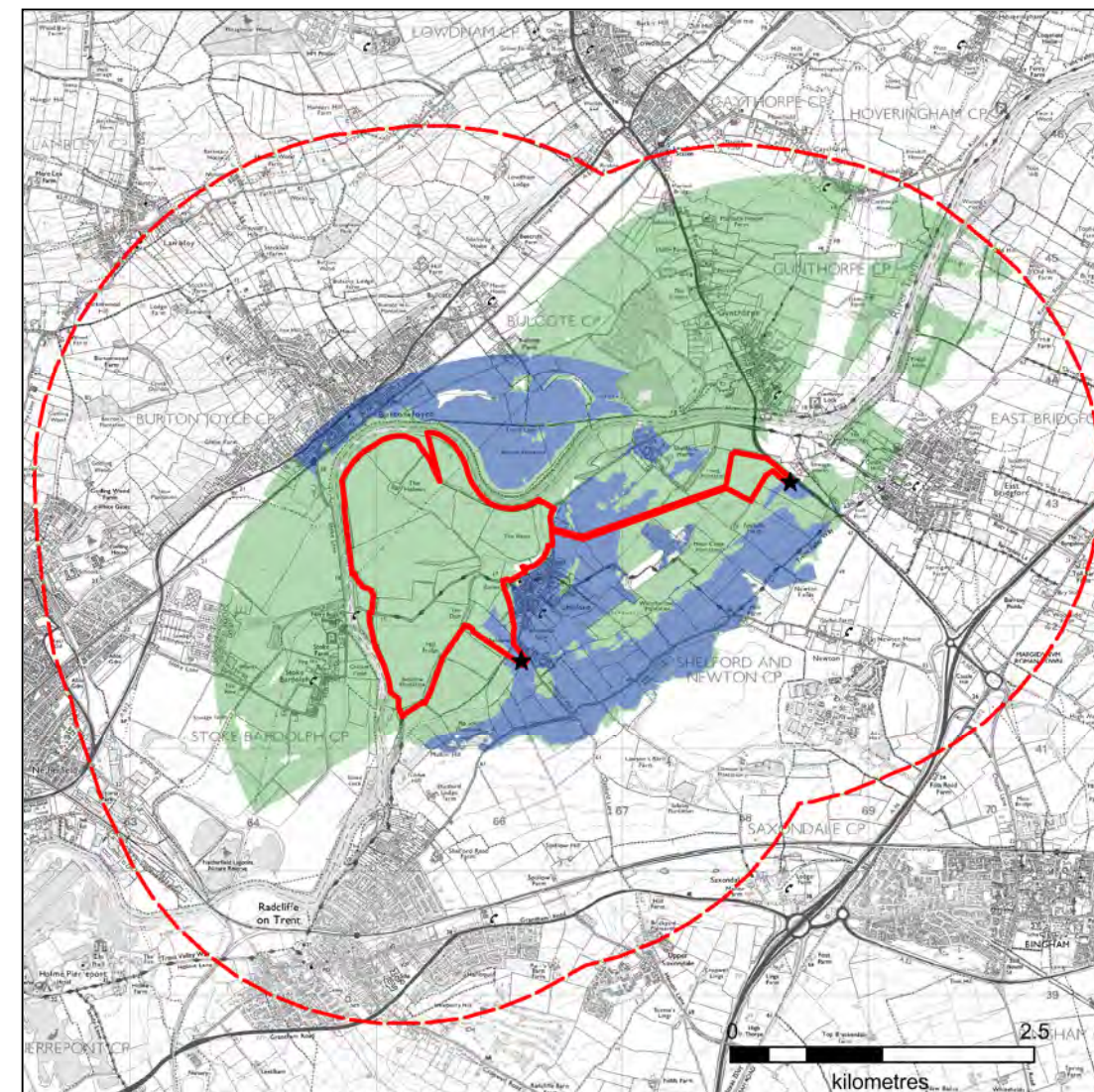
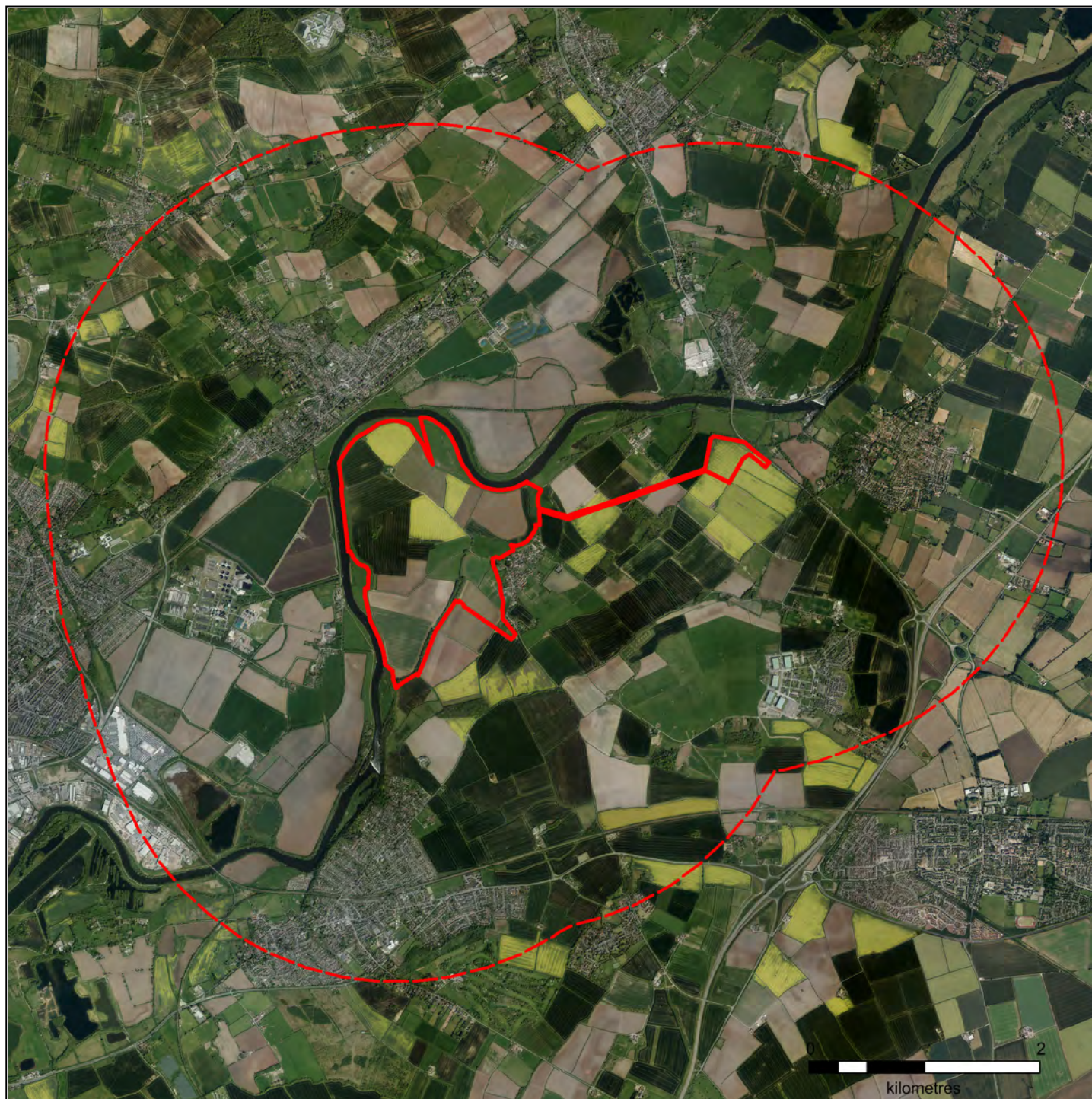
LANDSCAPE SUMMARY

The site has a strong sense of place, particularly to the east where small fields of pasture provide the setting for the church. Arable land lies further away from Shelford and on the site off the A6097. The access track/conveyor belt would have a negative impact on the setting of Shelford Manor to the north.



VISUAL SUMMARY


The main visual impact would be on residents of Stoke Bardolph to the west and on residents of Shelford to the east. There would also be a negative impact on users of the Trent Valley Way and the public footpath to the north of the river.




KEY

- ★ High Point
- Site Boundary
- 2.5km Buffer Zone
- ZTV - 0m height
- ZTV - 4m height

Rev Status	Description	Drawn	Ch/d	Auth	Date
Project					
<p style="text-align: center;">Minerals Local Plan</p>					
Property No.		Project No.			
		HW00935			
Title					
<p style="text-align: center;">Shelford</p>					
Scale		Drawn		Date	
As shown		NA		23/03/18	
		Ch/d		Date	
		Initials		23/03/18	
Auth		Initials		Traced	
Drawing No.					
Rev					
<p style="text-align: center;">HW00935</p>					



in partnership with

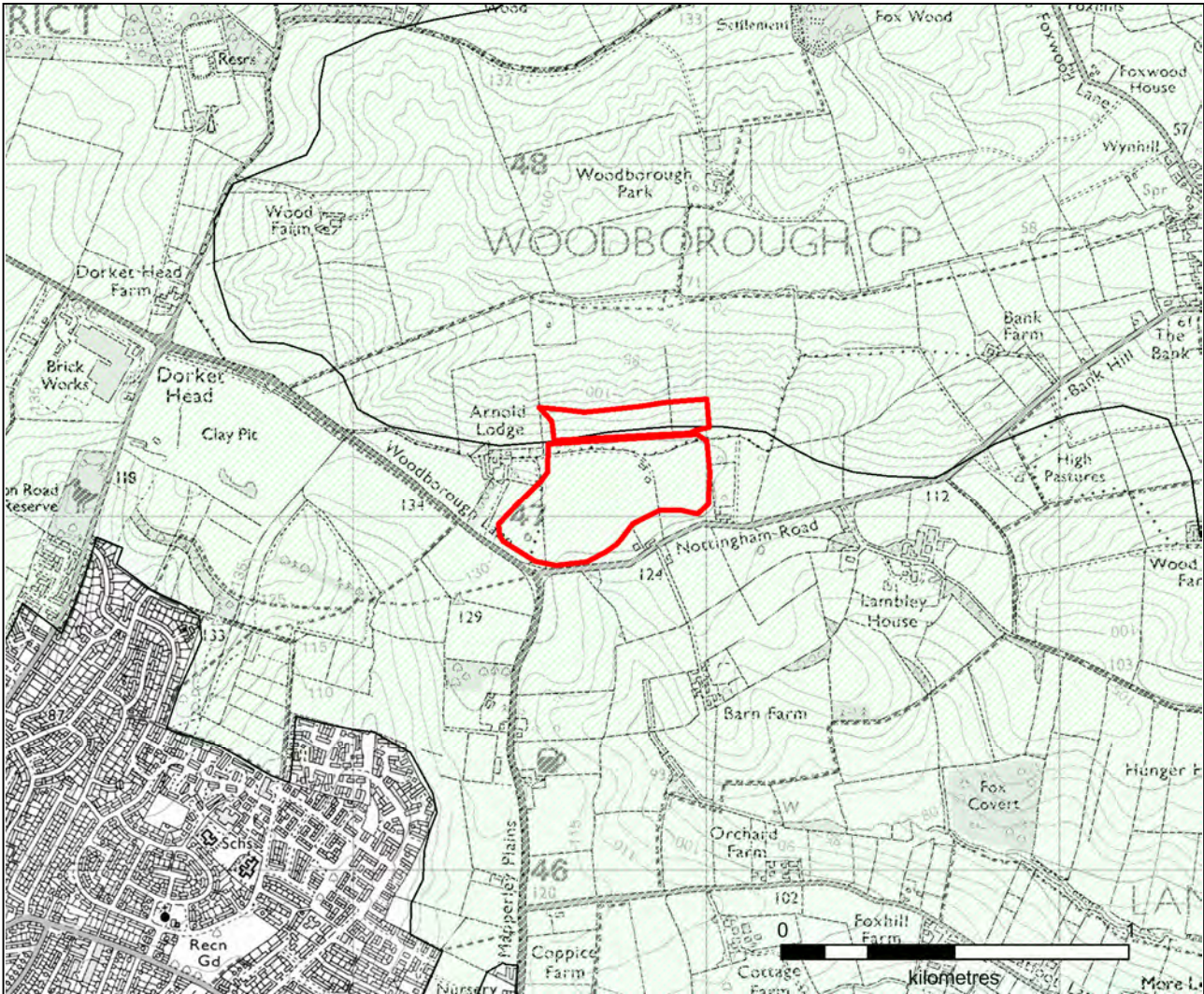
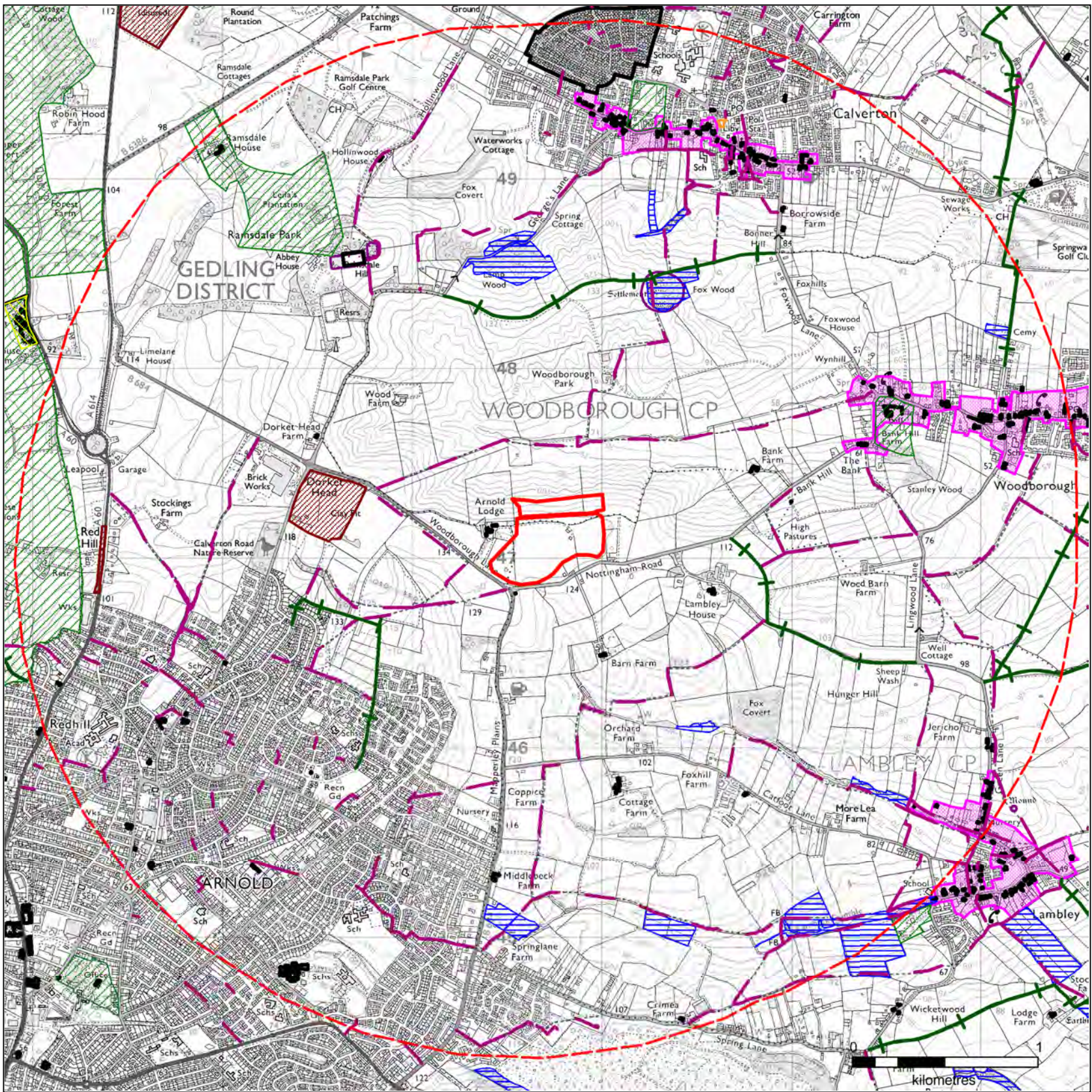


**Nottinghamshire
County Council**

www.viaem.co.uk Tel 01623 873873

Bilsthorpe Depot, Bilsthorpe Business Park
Bilsthorpe Nottinghamshire NG22 8ST

© Via East Midlands Limited, Registered in England no.09903246





Landscape Character Key


 Mid Notts


Designation Key


 Site Boundary

 2.5km Buffer Zone

 RoW - Bridleway


 Row - Footpath


 RoW - Restricted Byway


 RoW - BOAT


 Regional Parks Gardens


 NCC Parks Gardens


 Green Estates


 Local Wildlife Sites


 SINCSGeo

 Local Nature Reserves

 National Nature Reserves

 Historic And Listed Buildings

 Scheduled Ancient Monuments

 Conservation Areas

Rev Status	Description	Drawn	Ch'kd	Auth	Date
Project					
Minerals Local Plan					
Property No.		Project No. HW00935			
Title					
Woodborough Lane					
Scale	Drawn AS			Date 21/05/18	
As shown	Ch'kd	Initials			Date
	Auth	Initials		Traced	
Drawing No.					
Rev					
HW00935					

 in partnership with 

www.viaem.co.uk Tel 01623 873873

Bilthorpe Depot, Bilthorpe Business Park
Bilthorpe Nottinghamshire NG22 8ST

