

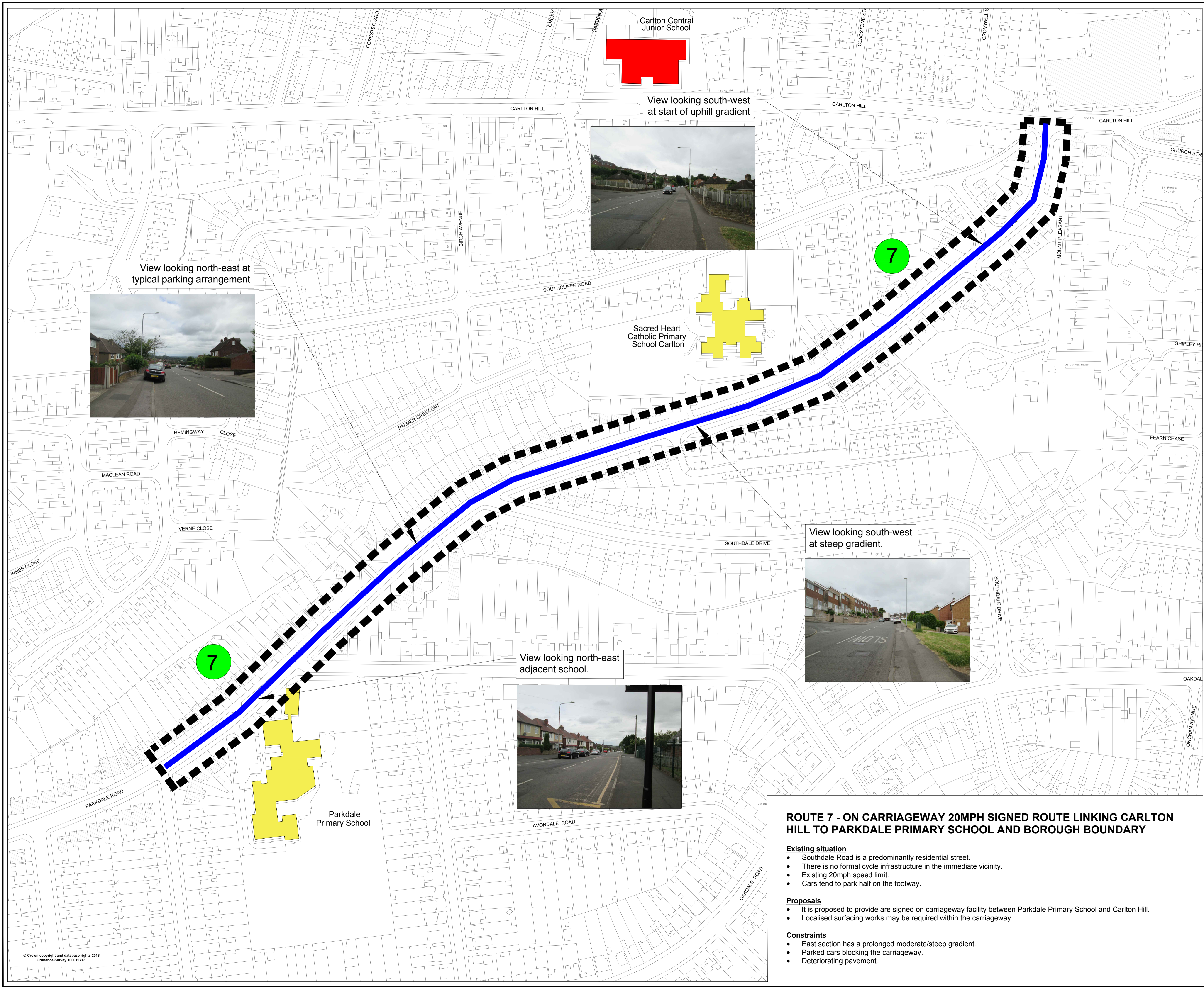


KEY

-  Extent of route 7
-  Proposed cycle route - signed only



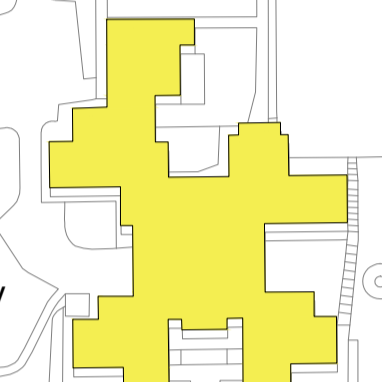
View looking south-west at start of uphill gradient



View looking north-east at typical parking arrangement



Sacred Heart Catholic Primary School Carlton



View looking south-west at steep gradient.



View looking north-east adjacent school.





ROUTE 7 - ON CARRIAGEWAY 20MPH SIGNED ROUTE LINKING CARLTON HILL TO PARKDALE PRIMARY SCHOOL AND BOROUGH BOUNDARY

- Existing situation**
- Southdale Road is a predominantly residential street.
 - There is no formal cycle infrastructure in the immediate vicinity.
 - Existing 20mph speed limit.
 - Cars tend to park half on the footway.

- Proposals**
- It is proposed to provide a signed on carriageway facility between Parkdale Primary School and Carlton Hill.
 - Localised surfacing works may be required within the carriageway.

- Constraints**
- East section has a prolonged moderate/steep gradient.
 - Parked cars blocking the carriageway.
 - Deteriorating pavement.

Rev	Status	Description	Drawn	Chkd	Auth	Date
	Project	Carlton & Gedling Strategic Cycle Routes				
	Status	Project No.				
	Title	Southdale Road Route 7				
	Scale	1:1250 @A1	Drawn	MTE	Chkd	JWB
					Auth	Traced
	Drawing No.	HW10181/C/12				Rev
				in partnership with 		
		www.viaem.co.uk Tel 0115 804 2100		Bilthorpe Depot, Bilthorpe Business Park, Bilthorpe, Nottinghamshire NG22 8ST		