



Area 12 local bus travel guide for Beeston & Stapleford area August 2014

This leaflet provides a travel map and destination and frequency guide for all local bus services in the Beeston and Stapleford area. Full timetables for these services can be obtained from the relevant operators, contact details are shown below.

Service	Route	Days of operation	Early morning Every	Daytime Every	Evening Every	Sundays Every
15	Old Sawley - Stapleford - Ilkeston	Daily	20-30 mins	20 mins	60 mins	40 mins
18	Nottingham - Queen's Medical Centre - Beeston - Stapleford	Mon - Sat	30 mins	30 mins	60 mins	----
20	Nottingham - Beeston - Ilkeston - Heanor	Sun & Bank Hols	----	----	----	60 mins
21	Nottingham - Queen's Medical Centre - Trowell - Ilkeston	Mon - Sat	4 journeys	60 mins	60 mins	----
36	Nottingham - Derby Road - Queen's Medical Centre - Beeston - Chilwell	Daily	20 mins	7-8 mins Beeston 15 mins Chilwell	10 mins Beeston 20 mins Chilwell	10 mins Beeston 20 mins Chilwell
N34	Nottingham - QMC - University Park - Beeston	Term time Mon - Sat nightbus	60 mins	----	----	----
N36	Nottingham - Derby Road - Queen's Medical Centre - Beeston - Chilwell	Fri, Sat night bus	60mins	----	----	----
510 (NOT)	Beeston - Toton - Stapleford	Mon - Sat	2 journeys	60 mins	1 journey	---
Citylink 1	Nottingham - Queens Drive Industrial Estate - (Boots - Beeston Mon-Fri only)	Mon - Sat	15 mins	12 mins	5 journeys	----
Club Class	Nottingham - Stapleford - Sandiacre - Borrowwash (a.m. to Nottingham, p.m. to Borrowwash)	Mon - Fri	4 journeys	4 journeys	----	----
i4	Nottingham - Stapleford - Sandiacre - Derby	Daily	10-20 mins	10 mins	30 mins	20 mins
Night i4	Nottingham - Sandiacre (0000 - 0300)	Fri, Sat night bus	60 mins	----	----	----
indigo	Nottingham - Beeston - Long Eaton - Derby (24 hours)	Daily	5 mins Beeston 10 mins Long Eaton 20 mins Derby	5 mins Beeston 10 mins Long Eaton 20 mins Derby	5 mins Beeston 15 mins Long Eaton 30 mins Derby	10 mins Beeston & Long Eaton 30 mins Derby

Service	Route	Days of operation	Early morning Every	Daytime Every	Evening Every	Sundays Every
L10	Nottingham - Ilkeston Road - Wollaton - Bramcote - Beeston	Mon - Sat	----	30-60 mins	----	----
L11	Beeston - Wollaton - Bilborough - Bulwell - Arnold	Mon - Sat	----	60 mins	----	----
two	Nottingham - Ilkeston - Cotmanhay	Daily	12 mins	12 mins	30 mins	20-30 mins
Night two	Nottingham - Ilkeston - Cotmanhay (0000 - 0300)	Fri, Sat night bus	60 mins	----	----	----
Skylink	Nottingham - Long Eaton - East Midlands Airport - Loughborough	Daily	20 mins	20 mins	60 mins	30 mins
Y5	Nottingham - Beeston - Long Eaton - Derby	Daily	20 mins	20 mins	30 mins	30 mins
Y36	Nottingham - Queen's Medical Centre - Beeston - Chilwell	Daily	20-30 mins	10 mins	10-20 mins	20 mins
Y36 (night)	Nottingham - QMC - Beeston - Chilwell (0040 - 0310)	Fri, Sat night bus	30 mins	----	----	----

Note: Early morning refers to journeys before 08.00. Evening refers to journeys after 18.00 although this may vary slightly on some high frequency services. Please check the operator's timetable for more detail.

For timetable information on all these services please contact the relevant operators.

trent barton	Tel: (01773) 712265	Web: www.trentbarton.co.uk
Nottingham City Transport	Tel: (0115) 950 6070	Web: www.nctx.co.uk
NottsBus	Tel: 0300 500 80 80	Web: www.nottinghamshire.gov.uk/buses
yourbus	Tel: 0844 800 0196	Web: www.catchyourbus.co.uk

NottsBus services in this area are supported by Nottinghamshire County Council and operated on their behalf by:

NOT NottsBus Tel: (0115) 969 4390 Web: www.nottinghamshire.gov.uk/buses

Bus timetables are also available at your local library, bus station, Customer Service Points, Tourist Information Centre and bus company information office or by post from the relevant operator.

Bus timetables and journey planning information is also available on the Nottinghamshire County Council web site at: **www.nottinghamshire.gov.uk/buses**

The Bus Appeals Body

If you have a complaint about a particular service you should raise the matter with the appropriate operator. Any passenger who is not satisfied with an operator's response/action with regard to a dispute over customer service or quality of service can refer the matter to the Bus Appeals Body.

The Bus Appeals Body is an organisation which will act as an arbitrator in resolving disputes between passengers and operators.

They can be contacted at:

**Bus Appeals Body c/o N.F.B.U.
PO Box 320,
Portsmouth
PO5 3SD**

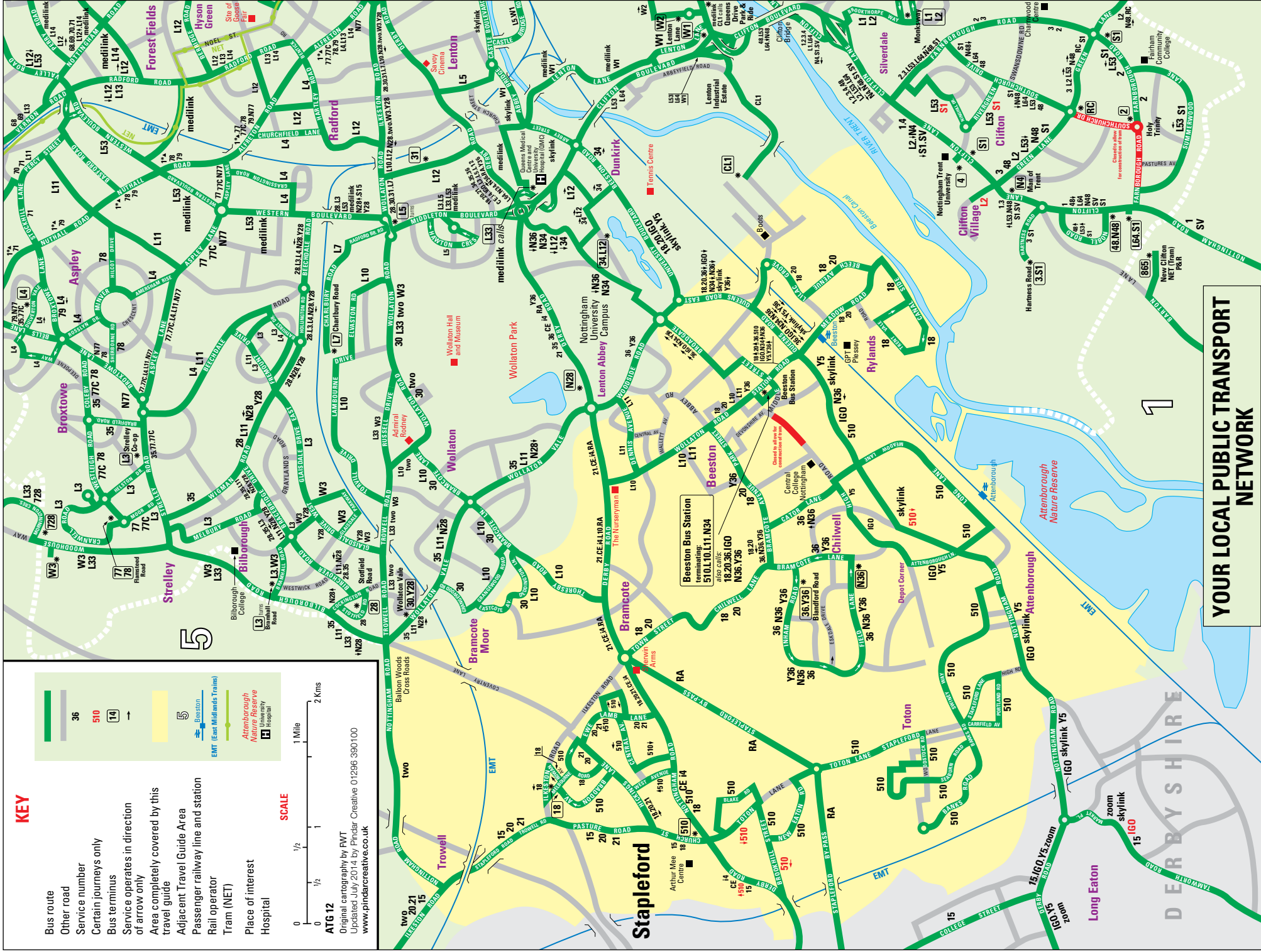
KEY

- Bus route
- Other road
- Service number
- Certain journeys only
- Bus terminus
- Service operates in direction of arrow only
- Area completely covered by this travel guide
- Adjacent Travel Guide Area
- Passenger railway line and station
- Rail operator
- Tram (NET)
- Place of interest
- Hospital

SCALE

0 1/2 1 2 Miles
0 1/2 1 2 Kms

ATG 12
Original cartography by RVT
Updated July 2014 by Pindar Creative 01296 390100
www.pindarcreative.co.uk



YOUR LOCAL PUBLIC TRANSPORT NETWORK

Other useful public transport contact numbers:

Nottingham Express Transit (NET)
(0115) 942 7777

National Rail enquiries
08457 48 49 50

National Express enquiries
08705 808080

East Midlands Airport
Derby (01332) 852852

Robin Hood Airport
08708 33 22 10

National Cabline
0800 123 444 (FreePhone)

traintaxi
(Details of taxi firms at rail stations)

www.traintaxi.co.uk

All other Nottinghamshire Transport Service enquiries:

0300 500 80 80
open 0800 to 2000
Mon-Fri, 0800 to 1200 Sat

This publication can be made available on request in alternative formats and languages.

Every care has been taken in compiling this leaflet. However, the County Council will not be liable for any loss or damage resulting from inaccuracies or alteration to services. Please obtain a full timetable or check with the relevant operator before travelling.

Information services from **traveline East Midlands**



On-line

www.travelineeastmidlands.co.uk

We'll help you plan your journey



0871 200 22 33

Speak to a Travel Advisor.

Calls cost 10p per minute plus network extras.



NextBuses.mobi

Live bus times direct to your mobile phone

Text **Traveline** to 84268 to receive a link to the mobile site

Scheduled bus times are shown if live times are not available.

Normal data charges of your mobile operator apply



Traveline-txt

If you can't get mobile internet on your phone, text the bus stop code to 84268 and receive a text with the next buses from the stop.

Your normal text message charge plus up to 25p for the reply.



traveline
public transport info
0871 200 2233

**east
midlands**



**Nottinghamshire
County Council**

T 0300 500 80 80

W www.nottinghamshire.gov.uk/buses

TBH - Transport & Travel Services,
Nottinghamshire County Council, County Hall,
Loughborough Road, West Bridgford, Nottingham, NG2 7QP