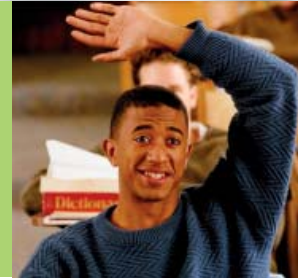


Language for Life



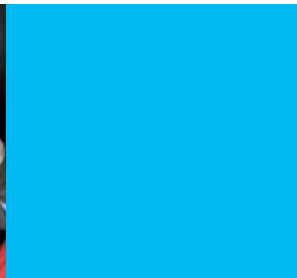
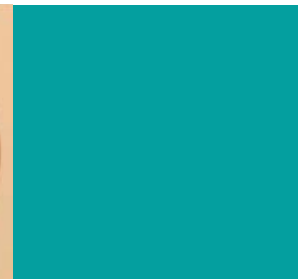
speaking

Language for Life

A Strategy for Nottinghamshire



listening



Nottinghamshire Language for Life Strategy

Our vision

To work collaboratively to give all children the chance to develop their language and communication skills, so that they can achieve their best educationally and can contribute positively to their community.

In Nottinghamshire we believe that:

- everything that happens to a child within the first few years of life is the foundation for their future success;
- the earliest months and years are the most important for all children and those who have strong attachments are more likely to achieve their developmental potential;
- children need to be emotionally secure to make expected progress;
- parents are the first and continuing 'educator' of their child/ren;
- communication skills are the foundation for development of learning and social skills; and
- all agencies should support a multi-agency strategy which enables parents and practitioners to provide rich language experiences for their children.

The 'Language for Life' strategy is an inclusive integrated pathway of language and communication support for children from 0-7, their families and the team of professionals around the child across universal, targeted and specialist provision. It supports the recommendations of the National Better Communication Action plan (DCSF 2009).

The strategy:

- recognises the vital role played by parents in the development of their child's communication;
- recognises that language and communication support is a golden thread that runs through all of our provision;
- is led by a multi-agency partnership and is supported through a multi-agency approach; and
- is supportive of the principles of "The Unique Child", being sensitive to the needs of individual children and their families.

Nottinghamshire Language for Life Strategy

Our aims

- to support Nottinghamshire County Council to lead the development of the Language for Life vision, collaboratively with relevant service providers;
- to help develop language-rich environments in an inclusive way for all children 0-7 years, including those for whom English is an additional language or those who have speech, language and communication needs;
- to raise community awareness of the importance of language for attainment and social relationships and develop the understanding of how communities can support the language development of their children;
- to provide a framework to enable early identification and support for children with early language delay;
- to promote a seamless transition for children and families as they move from universal, targeted and specialist types of support as required;
- to scope levels of provision to meet the needs of the Nottinghamshire's children aged 0-7 years across universal, targeted and specialist services, identifying any gaps and making recommendations for improvements through the Early Years Attainment Cluster,
- support parents and carers through Family Support and Enjoy and Achieve strategies to understand their role in supporting their child's development of language for life and improving their confidence and effectiveness in doing so;
- ensure that all practitioners work to deliver the 'Parents as Partners in Early Learning' (PPEL) policy;
- provide continuing professional development opportunities and training for all practitioners working with children and families to enable them to provide a language-rich environment for all children;
- monitor outcomes for children, parents and practitioners in order to improve and further develop practice;
- encourage the development of resources that support practitioners and parents to provide language-rich environments for all children.

Nottinghamshire Language for Life Strategy

Our aims continued

- link with the Signs and Symbols network steering group to ensure an inclusive and consistent approach to the development of communication for all;
- co-ordinate the learning from the various cross-agency projects and services that relate to early language development and embed them within every day practice so that essential elements are available for all children (universal) and additional support is available for identified targeted children and settings; and
- to keep abreast of research and current acknowledged best practice and include this to direct policy with reference to the Bercow Review (DCSF 2008) and the Better Communication Action Plan (DCSF 2009).

This strategy has been produced by the Nottinghamshire Language for Life Steering Group in September 2010. For more information, contact the Inclusion Support administrator on 01623 520053.