

County Life

Budget Special

How we make your money go further



Extra £20m
invested in our roads



07

Developing
your town
centres



08

Improving
your country
parks



12

Commemorating
the end of
The Great War

Welcome to County Life

People have told us the condition of local roads is a big concern. So between now and 2022, we will spend £142m on capital improvements to our roads. With 2,600 miles of highway to look after this won't solve every problem, but you will see a big improvement.

Many councils face difficult financial times especially those, like ours, that provide social care. These services play a vital role in helping people stay independent and easing pressure on the NHS. Whilst the demand for social care and running costs to the Council through wage inflation are both increasing, the amount of money we receive from the Government is decreasing.

To fill this widening gap, we have no choice other than to increase Council Tax and social care precept this year – around £1 per week for most households. This is not something we do lightly. Over the years we've done all we can to avoid increasing Council Tax and since 2010 we've saved £255m in running costs.

We will continue to do all we can to make every £1 go further but we are no longer in a position to make the amount of savings required without more support from Government or more support from the local taxpayer.



Kay Cutts

Leader of
Nottinghamshire County Council

The challenge facing Nottinghamshire

Over the next four years, your County Council faces a huge **budget shortfall** of **£54m**.

The reason is due to '**supply and demand**'. Money is in short supply for the public sector, particularly local councils and the demand for our services is increasing. We recognise the need to spend money wisely and have already made savings of **£255m** since 2010 by doing things differently and more efficiently. Our efficiency savings mean that **90p** in every **£1** is now spent on delivering the frontline council services that people rely on.

While we've been working harder to do more, our main Government funding has been reduced and will fall by **52%** from **£238m** just a few years ago to **£114m** in 2022.

As our budget shrinks, we have increasingly less money to support all the services people like to use. We currently spend **£3** out of every **£5** on providing social care services. This figure is set to rise as demand increases for our social care services, leaving less money for other services.

The figures speak for themselves: over the next eight years the number of Nottinghamshire people aged **over 80** will **rise by 32%** to **over 50,000**.

Older people need, and rightly expect, social care services to help them live their lives to the full.

However, as people live longer, the care and support they need becomes more complex and costly. Although the average cost of care for an older person is **£347 a week**, it can cost as much as **£4,500** to provide people with complex health issues the care they need.

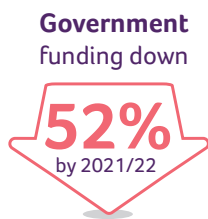


Money is in short supply for the public sector, particularly local councils, and the demand for our services is increasing.

Next year, we need to find an **additional £12m** just to support our adult social care services.

Supporting older people is only one area of the challenge we are facing. Services to help vulnerable children require an additional **£1m** in 2018/19.

Which way now for the **future** of funding County Council services?



More people are reporting concerns about vulnerable children to our Multi Agency Safeguarding Hub, which has seen a 70% increase in calls over the past three years. Young people in care have increasingly complex needs requiring additional, longer term support from the County Council.

Rising demand for places at special schools and expansion of local house building in Nottinghamshire, means more school places are also required.

Alongside increasing demand for our services, we are also facing significant increases in our costs.

The Government has increased the National Living Wage to make sure the lowest paid are given a fair income. The County Council has received no additional money to pay for this change, which will add an extra £26m to our budget in coming years.

We also need to find an extra £13m by 2022 as our suppliers increase their charges to cover rising costs due to inflation.

With less money available and increasing demands for our services, the future funding of local government services is reaching a tipping point.

Fairer funding for local services

Is it fair that local government services are funded by a postcode lottery which means where you live determines how much money your local council will receive to spend on services?

We don't think so and we're lobbying the Government to change the way money is shared out to local councils. We want to see a fundamental change in the way local government is funded, to offer a fairer way to pay for local public services.

We've already taken action by sending a letter signed by all 66 County Councillors to Sajid Javid MP, Secretary of State for Communities and Local Government, calling for change.

We are also using every opportunity to lobby our MPs and individual Ministers to bring about a change for the better.

The benefits of changing to a fairer system of funding public services is clear. Research by Leicestershire County Council has shown that fairer funding would provide Nottinghamshire County Council with an additional £35m to spend on local public services in the County.

We want to see action now to stop the cost of providing local public services unfairly falling on the shoulders of local taxpayers through higher Council Tax bills.

The issue of a fair deal for funding is wider than Nottinghamshire and affects the entire East Midlands. A report by HM Treasury, published in July 2017, revealed that the East Midlands is losing out nationally, with the lowest levels of public expenditure on economic development, transport and rail in the country.

A solution to finding a fairer way to fund local public services now needs to be found.

How the **East Midlands** loses out on Government investment



Your Council Tax

Making your money go further



What is Council Tax?

Local services provided by County and District Councils, plus the Police and Fire services, are all paid for by Council Tax and Government grants, and in some cases through charges for services. The amount you pay for Council Tax is based on the value of your property.

The County Council charge

The 2.99% increase in Council Tax and 2% social care precept will raise £16.4m towards meeting the council's budget shortfall and providing vital services, primarily to vulnerable people in Nottinghamshire.

Council Tax is providing more and more of the County Council's overall budget as Government grant is reduced. Money raised from Council Tax will contribute £329m towards the budget this year. This is an increase on 2017/18 but, in total, the Council will spend £22m less on services than last year.

The County Council receives dedicated grants from Government to fund public health and schools. All other income for the Council (including Council Tax) is used to deliver high quality services.

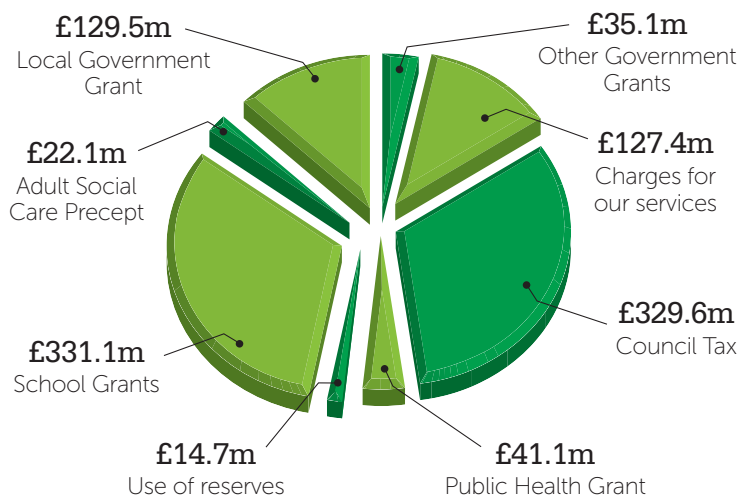
Your Council Tax payment 2018/19

| | |
|---------------|-----------|
| Band A | £885.90 |
| Band B | £1,033.56 |
| Band C | £1,181.20 |
| Band D | £1,328.85 |
| Band E | £1,624.14 |
| Band F | £1,919.45 |
| Band G | £2,214.75 |
| Band H | £2,657.70 |

The actual amount you pay will depend on your individual circumstances (whether you receive single person discount, student or disability exemptions etc) and additional amounts for your District or Borough Council, Fire and Police services.

Where the Council's budget comes from

For 2018/19



Adult Social Care Precept

In addition to the increase in Council Tax, the County Council has also approved, in line with Government guidance, an additional precept solely for Adult Social Care of 2%. The impact of this is:

| | |
|---------------|---------|
| Band A | £60.39 |
| Band B | £70.45 |
| Band C | £80.52 |
| Band D | £90.58 |
| Band E | £110.71 |
| Band F | £130.84 |
| Band G | £150.97 |
| Band H | £181.16 |

Investing in Nottinghamshire

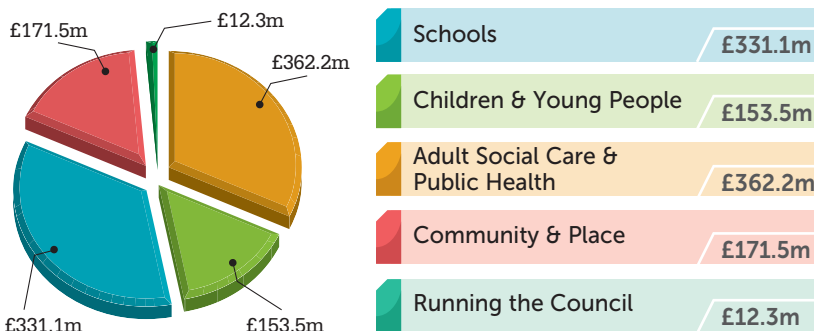
Additional capital investment during 2018/19 will fund major schemes including:

- **an extra £4m**, as part of a £20m investment in road maintenance and renewals over the next four years across the county
- **building replacement schools** for Orchard Special School, Newark and Hawthorne Primary School, Bestwood
- **capital investment of £15m** to ensure that there are sufficient school places available across the county
- **a further £10m** to improve the condition of schools across Nottinghamshire
- **£4m** investment in the Better Broadband for Nottinghamshire Project which aims to ensure that 98% of Nottinghamshire premises are able to access high speed fibre network capable of delivering superfast broadband
- providing a new **£2.5m recycling centre** in Rushcliffe to meet rising demand for facilities as more new homes are built across the borough.

For further information visit nottinghamshire.gov.uk/counciltax or call **0300 500 80 80**.

How the Council's budget is spent

For 2018/19

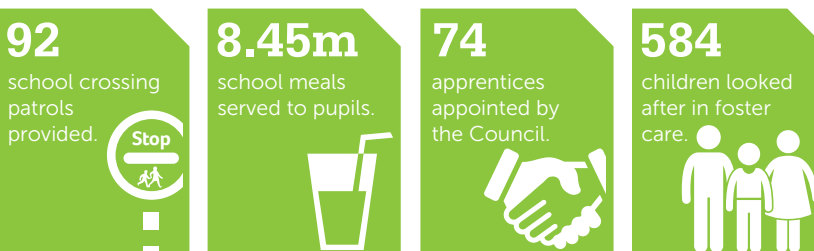


Just a few examples from over the last year

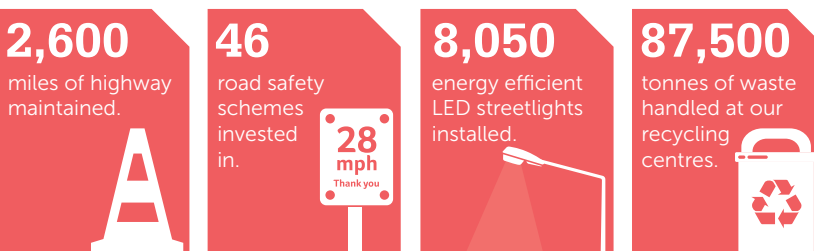
Adult Social Care & Public Health



Children & Young People



Community & Place



All information correct at the time of print, March 2018.

Investing in Nottinghamshire

Keeping the County moving and building for the future

£20m extra funding to bring improvements to a road near you

Despite its financial pressures the Council has listened to local people's priorities and we are investing an additional £20m in the County's highways network over the next four years.

This investment will increase the total capital spending on our roads over the next four years to £142m.

The extra funding will be focused on roads assessed as being likely to deteriorate in the next few years. The schemes will provide the best possible value for money by making the right repair at the right time to avoid larger repair bills in years to come, reduce compensation claims and help our economy by cutting congestion.

Roads in residential areas, some of which have been neglected for many years, will be targeted.

This could include schemes to improve the road surface and new safety features such as pedestrian crossings and interactive speed signs which will address a long wish list which communities have asked for in the past.

Work will also be carried out by our partners Via East Midlands to reduce traffic congestion and provide economic benefits which, in turn, increases the money available to reinvest in public services.

With 2,600 miles of roads in our network, the money won't solve every problem but it sets us in the right direction when it comes to getting a quality, safer road network for Nottinghamshire.

Major road improvements

Mansfield and Ashfield Regeneration Route upgrade

In addition, a further £5.5m has been invested in a major upgrade to the Mansfield and Ashfield Regeneration Route that will help give a boost to our local economy.

These works are being delivered by Via East Midlands and its partner Tarmac.

Gedling Access Road

Construction of the new £40m Gedling Access Road (GAR) including £5.4m of funding from the County Council is planned to start this winter, with the road planned to open in spring 2020. The new road will bring many benefits to the Gedling area including, creating employment opportunities, training and apprenticeships and over 1,000 new family homes.

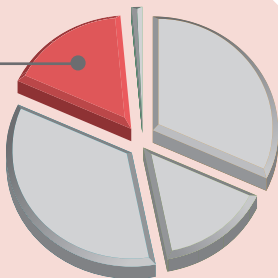
Via East Midlands is responsible for the design and delivery of the project.



Improving our local communities

Creating a better place to live, work and visit

The Council will spend **£171.5m** on our community and place in 2018-19.



We recognise the importance of our county as a 'place' and in creating desirable areas to live, work and visit. Our services which support this include: highways and transport, economic development, culture (including libraries and country parks), leisure, tourism, registration and celebratory services, planning, conservation, community safety, voluntary and community services, trading standards, emergency planning and waste management.

We manage the Council's land and buildings. This has included installing solar panels on our buildings which helps our environment and now provides an annual income of £222,000.



Rushcliffe's new recycling centre

A **£2.5m** investment into the construction of a new Rushcliffe recycling centre has been proposed to coincide with the building of new homes across the Rushcliffe area in the coming years. The County Council considers improving the coverage of recycling centres in the area a key strategic priority, and will borrow the funds as part of the Community and Place capital programme.

Town centre developments to inspire growth

An ambitious **£20m programme** is underway to breathe new life into town centres across the county.

The programme is intended to help town centres attract more shoppers and visitors, improve accessibility, create new jobs, attract investment, reduce the number of empty shops and offer more attractive places to work and live.

Seven major projects have been shortlisted for support under the scheme:

- Kirkby-in-Ashfield leisure centre and town centre redevelopment
- Re-invigorating Upper Bridge Street, Worksop
- Beeston Square phase 2 redevelopment
- Arnold Market / Arnold town centre
- Carlton Square
- Mansfield Old Town Hall redevelopment
- Newark Buttermarket redevelopment

Working with our partners, Nottinghamshire County Council is responsible for the delivery of the "Unlocking Growth in N2 Town Centres" programme which has been backed by £7.6m in funding from D2N2 Local Enterprise Partnership.

Projects are being led by the district and borough councils in each area and funding is subject to a detailed business case, with work set to start on most schemes this year.

Sherwood Forest Visitor Centre's Summer opening

The brand new Sherwood Forest Visitor Centre is on course for a summer 2018 opening. It will replace the existing visitor centre as a modern gateway to the Forest, with Nottinghamshire County Council working alongside the RSPB and their partners to manage the building and the iconic site in the future.

The impressive wooden structure was completed in December. Since then the roof and curtain-walling has been fitted, with stunning floor to ceiling windows to give visitors an inspiring view over the Forest. The finishing touches are currently being added to the building, which will complete the external work and efforts will then begin inside.

The Centre will also include a café and a shop, with an outside amphitheatre and a play area. The Robin Hood themed park has been designed with input from local children and visitors and will be a great resource for the area.

The Centre has been designed to provide visitors with all the information and inspiration they need for an enjoyable visit to the Forest, whether that's a stroll to see the Major Oak or a walk or picnic amongst the trees.



Other country park improvements

Rufford Abbey Country Park, which is managed for the Council by Parkwood Leisure, is getting a major investment of over **£300,000** to create a fantastic play area. The development will start during spring with a summer 2018 opening planned.

Home Pierrepont Country Park home of the National Water Sports Centre, which is managed by Holme Pierrepont Leisure Trust on behalf of the Council, is getting **£280,000** worth of improvements, including a new café, shop refurbishment, a new playground and better camping facilities. The revamp is due to be completed by the end of the year.

Cotgrave Country Park is set to benefit from a **£250,000** scheme to improve access to the Park. A former railway line is being transformed to create a new off-road route linking the Park with Radcliffe-on-Trent, Holme Pierrepont, the Grantham Canal path and the nearby Wildlife Trust reserve.



THE TOUR OF BRITAIN



RETURNS TO NOTTINGHAMSHIRE



Britain's biggest free-to-attend sporting event is once again coming to Nottinghamshire. The OVO Energy Tour of Britain is due to take place in the first week of September.

Last year over 210,000 people lined the streets along the 165km route which went through 45 towns and villages to support our local stage of the cycle race – more than for any other stage on the route.

The County was adorned with yellow bikes and fabulous land art created from all kinds of things – including a bike made of boats, a giant Bramley apple and even moving sheep.

Thousands of school children, teachers and staff turned out on the first day of the new school term to cheer and wave on some of the world's top riders.

The Tour of Britain's visit boosted Nottinghamshire's economy by more than £3.4m and attracted around 81,000 visitors.

Hours of live TV coverage were dedicated to our County, showcasing top landmarks, well-loved legends and stunning countryside, giving viewers across the UK and the world a window into what Nottinghamshire has to offer as a tourist destination.

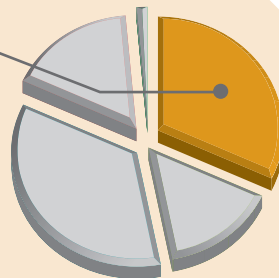


Keep up to date with the latest news, where to watch this year's race and how to get involved by visiting [nottinghamshire.gov.uk/tourofbritain](https://www.nottinghamshire.gov.uk/tourofbritain)

Caring for adults

Helping people stay healthy and independent

The Council has allocated **£362.2m** of our 2018-19 budget to care for older people and adults aged 18 to 64 and for Public Health services.



Adult Social Care and Public Health requires the Council's largest annual spend. As well as providing services to assist people directly, we connect people with support from elsewhere, including liaising with health services, to promote independence and wellbeing.

These services include: care equipment, personal care, meals at home, sheltered employment for people with disabilities, day centres, extra care housing, Shared Lives (carers share their homes with older people or people with a disability), personal assistants, START Team (see below), Handy Person Adaptation Service (providing affordable adjustments to people's homes), supported living and Public Health.

The Council hosts the Health and Wellbeing Board which brings together the NHS, Public Health, social care and children's services, to develop co-ordinated approaches that best meet the health needs of residents.

6,890 

people with the highest needs
helped to stay independent

at home
with Home Care
or other support



Helping hospital leavers to get back on their feet

The Council's Short Term Assessment and Reablement Team (START) works with people in their own homes who have left hospital and are struggling with everyday tasks such as getting dressed or getting ready for bed.

Specialist support staff and therapists work with people on an agreed programme for up to six weeks to help them to regain their

skills. On average 37 people each day across Nottinghamshire benefit from this free service.

The Council's budget for this work is around £4m. We invested a further £80,000 to fund an extra 3.5 START posts from October 2017 to March 2018, to meet winter pressures.

The Council also spends £2.5m a year on social care teams in

Nottinghamshire hospitals to organise necessary support for patients when they are discharged.

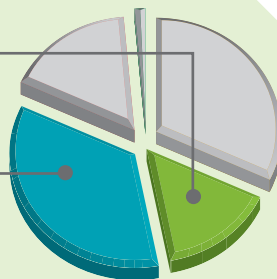


investment to meet
winter pressures

Supporting our children

Ensuring our young people have the best start in life

The Council will spend **£153.5m** on social care and support for young people and **£331.1m** on schools in 2018-19.



We support more than 170,000 children and young people in Nottinghamshire with services that include early years' education, local authority maintained primary and secondary schools, children's centres, youth services, children's social care, school meals and crossing patrols, youth justice, fostering, adoption, leaving care, special educational needs, short breaks service and outdoor education facilities.

We are also responsible for school place planning and are currently undertaking feasibility studies to create several hundred additional school places by 2020/21.



Investment in keeping children safe

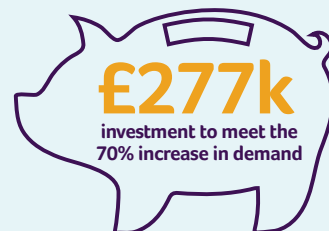
An investment of £277,000 for additional resources will be put into the County's Multi-Agency Safeguarding Hub (MASH) over the next two years, in response to a 70% increase in demand.

The MASH is the point of contact for all new safeguarding concerns from professionals and members of the public. In 2014-15 there were 17,000 enquiries into the MASH

and this has increased dramatically in the last couple of years to more than 25,000 enquiries.

The MASH is a partnership between social workers and early intervention workers from Nottinghamshire County Council, officers from Nottinghamshire Police, Fire and Rescue, Probation and NHS health specialists.

Improved information sharing between agencies has helped to protect vulnerable children and adults from harm



NOTTINGHAMSHIRE REMEMBERS THE GREAT WAR

11 November 2018 marks **100 years** since the end of World War 1. The County Council is hosting a series of events, including an open air film screening of *War Horse* and a Heritage Day at Rufford Abbey Country Park, to commemorate the centenary of the end of the war and the sacrifice of men and women from across Nottinghamshire.

A lasting legacy to our Great War heroes

The culmination of the First World War commemorations will see the creation of a new memorial, located at the Victoria Embankment in Nottingham, which will feature the names of all 14,000 Nottinghamshire and Nottingham fallen during the Great War. Names of both forces personnel and civilians will be included on the memorial.

The memorial project is being led jointly by the County and City Councils, in partnership with other local authorities, businesses and military associations. It is hoped that a proportion of funding for the project can be raised through public donations.

Since 2013, volunteers have been carrying out the painstaking task of compiling the Nottinghamshire Great War Roll of Honour – an online database of all the county's Great War fallen, including their place of birth, family history, military information, where they are buried and the location of any memorials bearing their name. This was part of the wider Trent to Trenches project, a countywide programme of events and activities to commemorate 100 years since the start of the Great War.

The names of people listed in the Roll of Honour will be used in the creation of the new memorial.

You can view the Roll of Honour and/or submit further information at nottinghamshire.gov.uk/rollofhonour

Find out more about the events and projects commemorating the end of The Great War
nottinghamshire.gov.uk/nottsremembers



Victoria Embankment Memorial

