



Nottinghamshire
County Council

Nottinghamshire Minerals Local Plan

Issues & Options consultation

20 November 2017 - 14 January 2018





Image: Courtesy of Lafarge Aggregates and Concrete UK



Contents

1. Introduction	4
Scope of the new Minerals Local Plan	4
Have your say	5
What happens next?	5
Contact us.....	7
Alternative formats	7
2. Setting the overall context for the Plan	8
Overview of the Plan area.....	8
Overview of Nottinghamshire’s mineral resources and industry.....	11
Key principles and creating a vision.....	13
How will we deliver the vision?.....	15
3. Minerals provision	16
Aggregate minerals - estimating future demand	16
Strategic approach to new mineral development	19
Sand and gravel provision.....	20
Sherwood Sandstone provision	23
Crushed rock (limestone) provision.....	24
Alternative aggregates	25
Brick clay provision	26
Gypsum provision	28
Silica Sand provision.....	29
Industrial Dolomite provision	30
Building stone provision	32
Coal provision	33
Coal recovery.....	33
Hydrocarbons provision	34
4. Development Management policies	38
5. Minerals Safeguarding and Consultation Areas	39
Appendix A: Questions set out in the Issues and Options document	41



1. Introduction

We each use on average the equivalent of around 10 tonnes of minerals every year to sustain our way of life. Sand and gravel, crushed rock and brick clay are essential raw materials used in the building and construction industry; coal, oil and gas supply most of our energy needs and a wide range of other minerals are vital for our manufacturing, food, chemical and pharmaceutical industries and agriculture. Indeed almost all aspects of our material well-being depend to one degree or another on minerals.

Nottinghamshire is rich in minerals – in fact most of the County overlies at least one potential surface or underground resource. Sand and gravel, gypsum and brick clay are our largest extractive industries, all of which are regionally or nationally important. Other minerals worked include: building stone, silica sand, coal and oil. There are also other mineral resources such as industrial dolomite, coal bed methane and shale gas that could be worked in the future.

Whilst many of our mineral resources remain plentiful, permitted reserves are often limited and finding sufficient new reserves to meet future demand will be a challenge over the next 15-20 years. Unlike other forms of development, minerals are finite and can only be worked where they are found. These factors, combined with the potential environmental impacts of extraction can limit where mineral extraction is feasible. It is therefore important both to identify where future mineral extraction will be acceptable and to safeguard resources so that suitable sites are not unnecessarily lost to other development.

Scope of the new Minerals Local Plan

The County Council is preparing a new Minerals Local Plan to resolve these issues and to provide the planning policy blueprint against which all proposals for new minerals development will be assessed. The current Minerals Local Plan was adopted in December 2005 and is now due for replacement. The new Minerals Plan will cover the next 19 years until 2036. Its over-arching theme is the promotion of sustainable development and achieving the highest quality restoration possible. This means balancing the economic benefits and need for minerals against the social and environmental disruption and harm that their extraction can cause. Long term environmental gains can be achieved, for example, by creating wildlife habitats out of worked out quarries. Sustainability also means safeguarding mineral resources from unnecessary sterilisation so they can remain available for extraction for future generations.

In order to achieve this, the Plan will identify a steady and adequate supply of minerals over the Plan period along with a range of development management policies that set out environmental and other standards that all new minerals development proposals should comply with.

Have your say

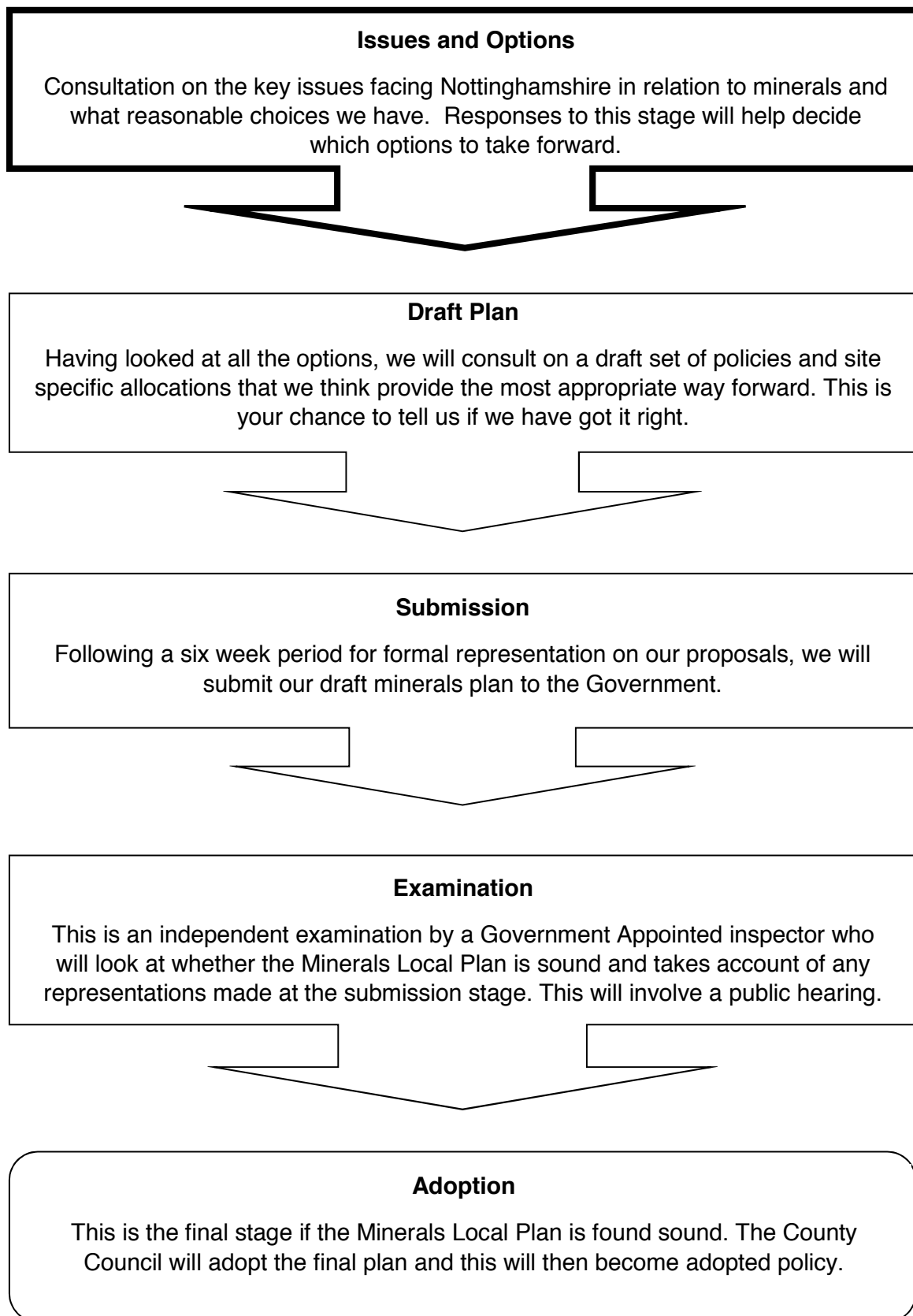
The purpose of this 'Issues and Options' consultation exercise is to set out the main issues expected to arise during the Plan period and to explore what reasonable options exist to resolve them. We need to gather the views from all sections of Nottinghamshire's communities on these issues. There is likely to be a wide range of views about the shape of future mineral extraction in the County so we need to find deliverable solutions that have the best consensus of opinion. It is therefore vital you let us know what you think so we can take your views into account before any decisions are made about what should go into the new Plan.

This document will be open for comments until **14th January 2018**. To help you make comment we have included some specific questions throughout this document but feel free to raise anything else you think is relevant. We would encourage you to respond online to this consultation at www.nottinghamshire.gov.uk/minerals or you can email/write to us at the addresses shown below. Please note all comments that you make will be public.

What happens next?

At the end of this consultation exercise we will consider all comments received and decide which options should go forward into the new Plan. You will then be able to comment on a draft Minerals Local Plan and tell us that you think before a final decision is made about what will go into the final Plan. A summary of all of the main stages of plan preparation before it can be adopted is set out below. Under our current timetable it is hoped the new Minerals Local Plan will be adopted in 2019.

Key stages in preparing the new Minerals Local Plan



Want more information?

This consultation paper provides a summary of the issues and options. This may be sufficient for your purposes, but for a fuller picture we have prepared a range of background papers which set out in detail the particular issues faced by each mineral and some other key topic areas. There are also a number of technical reports.

Contact us

Online: www.nottinghamshire.gov.uk/minerals

Email: planning.policy@nottscc.gov.uk

By post:

Planning Policy Team
Place Department.
Nottinghamshire County Council
County Hall
West Bridgford
Nottingham
NG2 7QP

By Phone: 0300 500 80 80 (customer contact centre)

Please ensure that we receive your comments by 14th January 2018

Alternative formats

This information can be made available in alternative formats or languages on request.

All maps in this document are sourced from: British Geological Survey. 2013. Digital Geological Map of Great Britain 1:625 000 scale (DiGMapGB-625) Superficial Deposits data [CD-ROM]. Version 1.10. Keyworth, Nottingham: British Geological Survey. Release date 30-04-2013

2. Setting the overall context for the Plan

To plan effectively for future minerals development, we need to have a good understanding of the current situation and what is likely to change over the next 19 years. As part of this, we are developing a 'spatial portrait' of Nottinghamshire, setting out the key environmental, geological, geographic, social and economic influences found in the County. We have included an early draft of the spatial portrait but if you feel that something else should be included we welcome your opinions.

Overview of the Plan area

Nottinghamshire is part of the East Midlands, but shares a boundary with South Yorkshire. Northern parts of Nottinghamshire therefore have significant employment, housing and business links with Sheffield and the metropolitan areas of Barnsley, Rotherham and Doncaster. The more urbanised west of the County is closely linked to neighbouring Derbyshire, with more rural eastern parts of the County having a similar character to neighbouring parts of Lincolnshire. In the south, Nottingham is the major regional centre with links to the neighbouring cities of Derby and Leicester. Consequently there is a significant overlap of housing areas, business and employment between these three cities (see Plan 1 below).

Around two thirds of the population live in, or around, Nottingham which is a major centre for employment and retailing. The remainder live in, or close to, the other main towns of Mansfield, Kirkby in Ashfield, Sutton in Ashfield, Hucknall, Worksop, Newark and Retford. Outside these urban areas, the rest of the County is largely rural with scattered small villages, farmland, woodland and commercial forestry.

The County's landscape is characterised by rich rolling farmlands to the south, with a central belt of mixed woodland and farmland, giving way to heathland in the north and open, flat agricultural landscapes dominated by the River Trent to the east. Nottinghamshire also supports a wide network of important sites for nature conservation, the most important focused within Sherwood Forest, near Edwinstowe. This includes a Special Area of Conservation and possible future Special Protection Area, both of which hold international status.

However, the overall quality of our natural environment has suffered in the past from industry and other development pressures and there has been a decline in biodiversity, with losses of ancient woodland, heathland, species-rich grassland, hedgerow and wetland habitats, as well as the species that these habitats support.

Road and rail links to the rest of the UK are generally good especially via the main north-south routes of the M1, A1 and direct rail links to London from Newark and Nottingham.

Nottinghamshire's economy generally compares well to the rest of the UK, and some of our urban areas are expected to be the focus of significant housing and commercial development in the future. However, there are wide inequalities in the rates of employment and income across the County, most notably in the former

mining areas to the north and west. This is often reflected in similar levels of inequalities in health, education and skills.

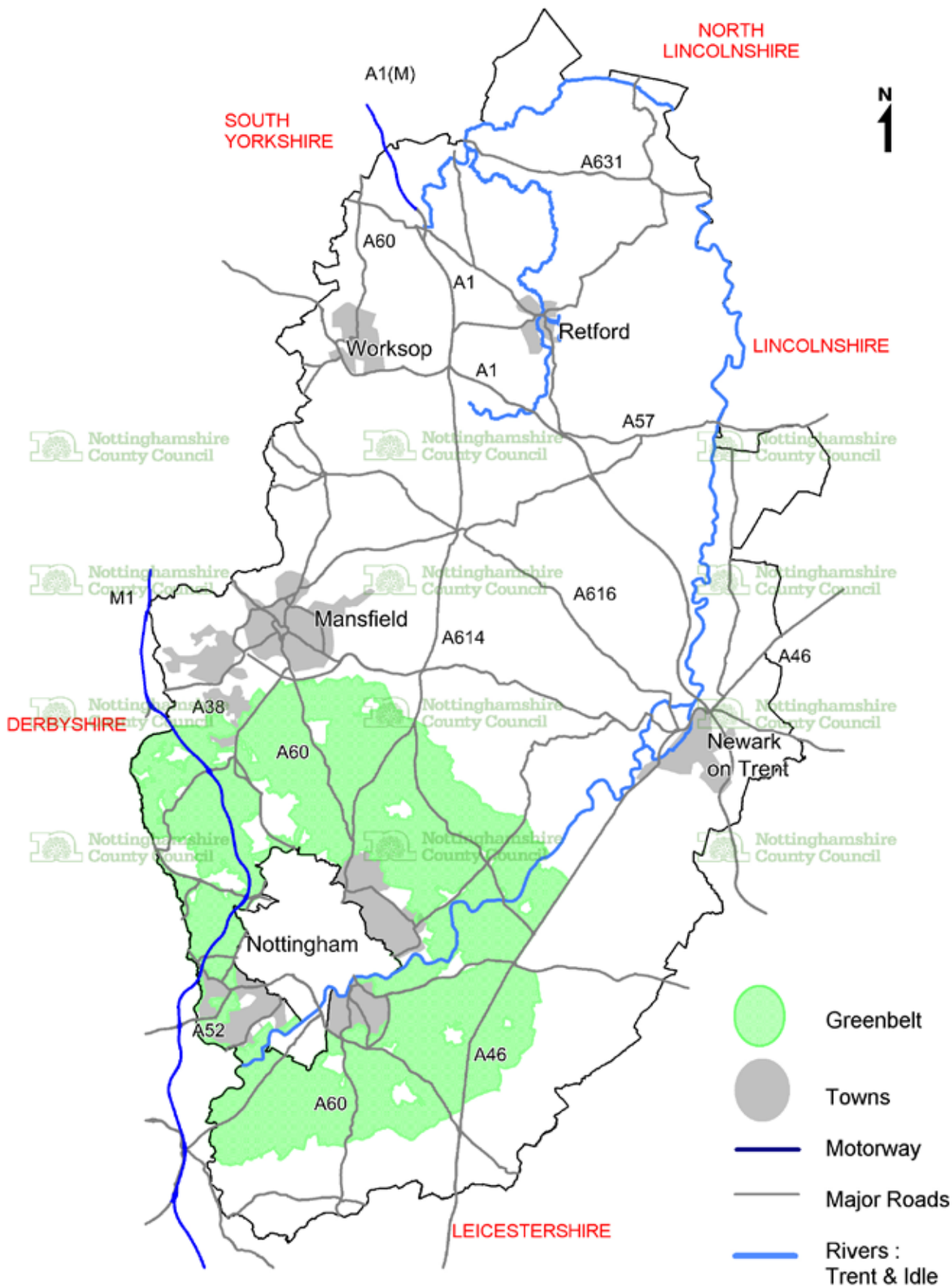
Mansfield, Worksop and Newark are important centres for warehousing and distribution whilst service, technology and research based industries tend to cluster around Nottingham. The energy industry also has a major role with four power stations along the River Trent. Elsewhere, agriculture and forestry are no longer major employers but still make up much of the County's rural landscape, particularly to the south and east.

Flood risk, particularly in the Trent Valley and along its tributaries, presents planning and environmental issues which is a significant constraint to most forms of built development. The expected impact of future climate change could result in higher winter rainfall and more extreme flood events.



Image: Courtesy of Tarmac Limited

Plan 1 Spatial portrait of Nottinghamshire



For Illustration Only
 © Crown Copyright. All Rights Reserved. Nottinghamshire County Council 100019713 2017

Overview of Nottinghamshire's mineral resources and industry

Nottinghamshire is rich in minerals and most widely known for its past coal mining industry which has had a major impact on the social and economic development and environment of many parts of the County especially in the north and west. There are no longer any active collieries but the legacy of the coal industry is still very evident. The most visible reminders are the large spoil tips, many of which have now been restored. Most former colliery sites have since been redeveloped to provide a range of employment land.

Today, sand and gravel is the biggest extractive industry in the County. Most quarries work the river deposits found in the Trent and Idle Valleys although Sherwood Sandstone is also exploited. This activity has transformed large areas of the Trent and Idle Valleys into wetlands and in doing so has changed the landscape character of the area. Some former workings are now used for sports and recreation and others have become important wildlife habitats. As the County is quite poor in biodiversity, sand and gravel reclamation schemes have had a very significant role in redressing the balance.

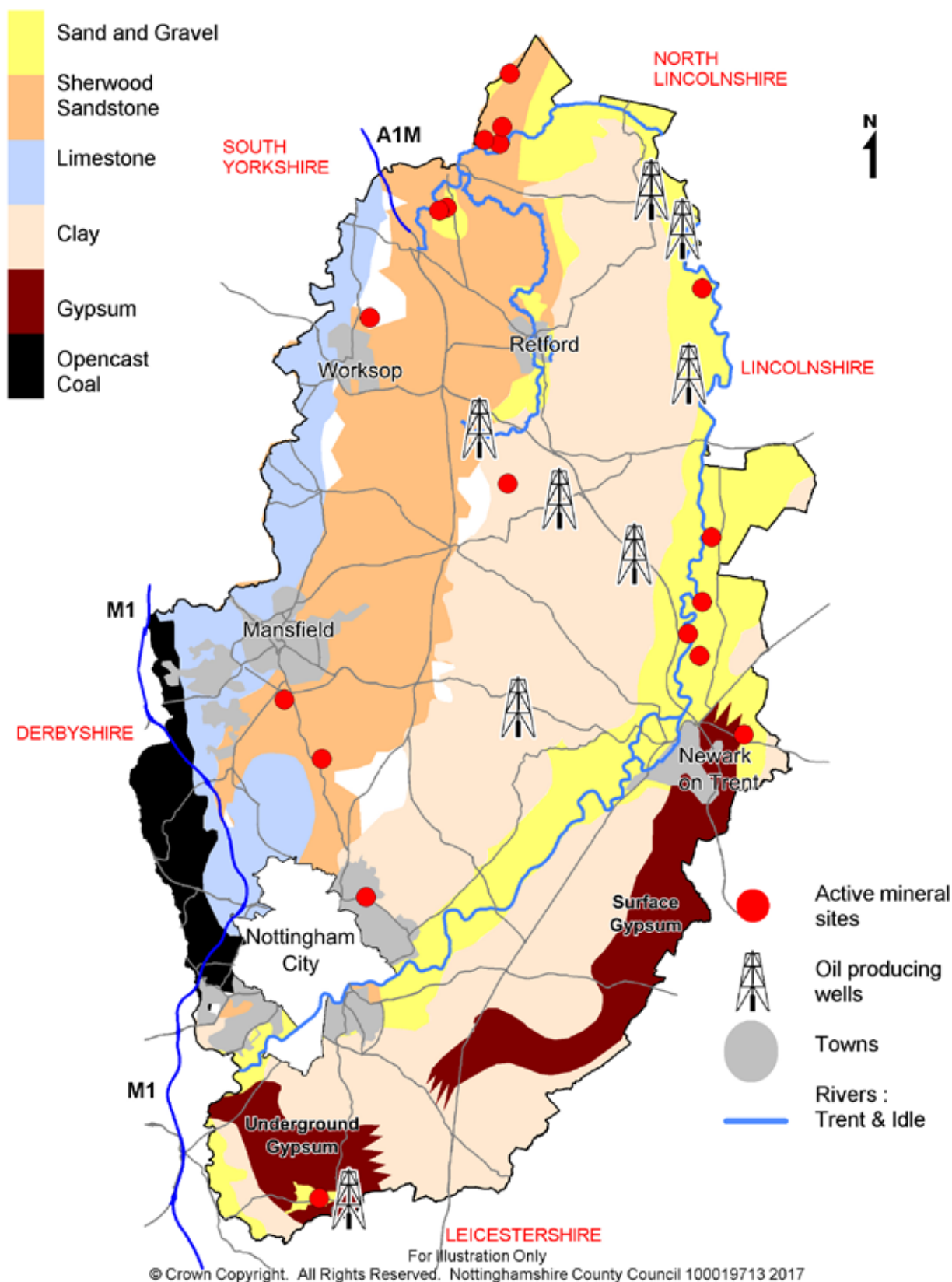
Gypsum is another major minerals industry in Nottinghamshire and has been extensively mined in the south of the County and quarried between Newark and Kilvington. The associated plasterboard and plaster works that these mineral operations support are important local employers, although few people are actually directly employed in the extractive process itself.

Other minerals worked are brick clay, silica sand, building stone, aggregate limestone, and oil. Some of these minerals also support locally important associated industries such as brickworks. Building stone was worked much more extensively in the past and has contributed towards the traditional character of many villages and historic buildings. Today, extraction is limited to just one small quarry.

Nottinghamshire has potential mineral resources that have not been exploited to date but which could be in the future. These include industrial dolomite found in a small area in the north west of the County and coal bed methane and shale gas which are found across large parts of the County.

Q1 Do you think any further information should be included in the overview of the area?

Plan 2 Nottinghamshire's minerals resources



British Geological Survey. 2013. Digital Geological Map of Great Britain 1:625 000 scale (DiGMapGB-625) Superficial Deposits data [CD-Rom] Version 1.10. Keyworth, Nottingham: British Geological Survey. Release date 03-07-2013

Key principles and creating a vision

The preparation of the new Minerals Local Plan does not start from a blank sheet of paper. In addition to considering the context identified in the spatial portrait, the Plan must take account of existing national and local policy as summarised below.

National Policy

The overarching aim of the planning system as set out in the National Planning Policy Framework (NPPF) is to contribute to the achievement of sustainable development. Sustainable development is defined as meeting the needs of the present without compromising the ability of future generations to meet their own needs. There are three dimensions to sustainable development which the planning system needs to take into account:

- An economic role – to contribute to building a strong, responsive and competitive economy, by ensuring that sufficient land of the right type is available and in the correct locations to support growth and innovation
- A social role – to support strong, vibrant and healthy communities
- An environmental role – contributing to protecting and enhancing our natural, built and historic environment including improving biodiversity, prudent use of natural resources and adapting to climate change.

The NPPF and the Planning Practice Guidance (PPG) also sets out specific guidance for the sustainable use of minerals. The NPPF acknowledges that it is essential to ensure that there is a sufficient supply of minerals to support sustainable economic growth and our quality of life. However since minerals are a finite natural resource and can only be worked where they are found, it is important to make best use of them to secure their long term conservation. Minerals Planning Authorities through their Minerals Local Plan are required to plan for a steady and adequate supply of aggregates whilst ensuring future minerals development does not have unacceptable adverse impacts on the natural and historic environment or human health. This will be achieved through the identification of site specific allocations and a range of planning policies against which planning applications can be assessed.

Local Policy

Local policy includes the Council Plan – ‘Your Nottinghamshire, Your Future’, the Nottinghamshire Local Transport Plan and the District Councils’ Local Plans. The Plan must also consider mineral and other plans produced by adjacent authorities to ensure compatibility across administrative boundaries.

‘Your Nottinghamshire, Your Future’ sets out the strategic ambition for the future of Nottinghamshire and the Council for the next four years (2017-2021). The plan is focused on Nottinghamshire as a prosperous place where people want to live, work visit and invest. The document is focused around four vision statements;

- ‘A great place to bring up your family’;
- ‘A great place to fulfil your ambition’;
- ‘A great place to enjoy your later life’;
- ‘A great place to start and grow your business’.

For the Minerals Local Plan this will mean upholding strong environmental principles that protect and enhance the environment, ensuring that the minerals industry contributes effectively to the local economy and engaging with and supporting communities affected by minerals development.

Our Vision

The new plan will be guided by an overall vision setting out how minerals will continue to be provided over the Plan period in the most sustainable way at the local level as well as supporting the delivery of national planning policies. The draft vision is:

“Minerals are a valuable natural resource and over the Plan period to 2036 will continue to be used as efficiently as possible across Nottinghamshire. This will include sustainable use of primary minerals as well as the promotion of recycled and secondary aggregates.

Within geological constraints, mineral development will be concentrated in locations that offer the greatest level of accessibility to the major markets and growth areas and to sustainable transport nodes to encourage sustainable patterns and modes of movement.

Nottinghamshire will continue to provide minerals to meet its share of local and national needs. Potential sites/quarries will be identified to support the economic, social and environmental benefits of sustainable growth. Mineral reserves will be identified and safeguarded against inappropriate development.

All mineral workings will contribute towards a greener Nottinghamshire by ensuring that the County’s diverse environmental and historic assets are protected, maintained and enhanced through appropriate working, restoration and after-use. This will result in improvements to the built and natural environment, and contribute to landscape-scale biodiversity delivery; and the re-connection of ecological networks.

The quality of life and health of those living, working in, or visiting Nottinghamshire will be protected.”

Q2 Do you agree with the draft vision? Are there other things we should include?

How will we deliver the vision?

For the Local Plan to work it must be deliverable. We need to have clear goals for what we want to achieve and be able to measure the effectiveness of our future policies. To do this there needs to be a clear set of strategic objectives and strategic policies.

Key strategic issues:

1. Improving the sustainability of minerals development

Ensuring that primary minerals are worked in the most sustainable manner and the use of secondary and recycled aggregates is encouraged. Securing a spatial pattern of mineral development that efficiently delivers resources to markets within and outside Nottinghamshire.

2. Providing a steady and adequate supply of minerals

Identifying a steady and adequate supply of minerals over the Plan period to assist in economic growth both locally and nationally.

3. Minimise impacts on communities

Minimise the adverse impacts on Nottinghamshire's communities by protecting their quality of life and health from impacts such as traffic, visual impacts, noise and dust.

4. Biodiversity led restoration of worked out quarries

Ensuring that all worked out quarries are restored to the highest standard and at the earliest opportunity through a biodiversity led approach and that the restoration proposals are addressed at an early stage of the application process.

5. Safeguarding of minerals from unnecessary sterilisation

To protect key mineral resources from the unnecessary sterilisation by other forms of development, and safeguard existing minerals infrastructure to ensure a steady and adequate supply of minerals in the future.

Q3 Are the above strategic issues appropriate? Are there others we should consider?

3. Minerals provision

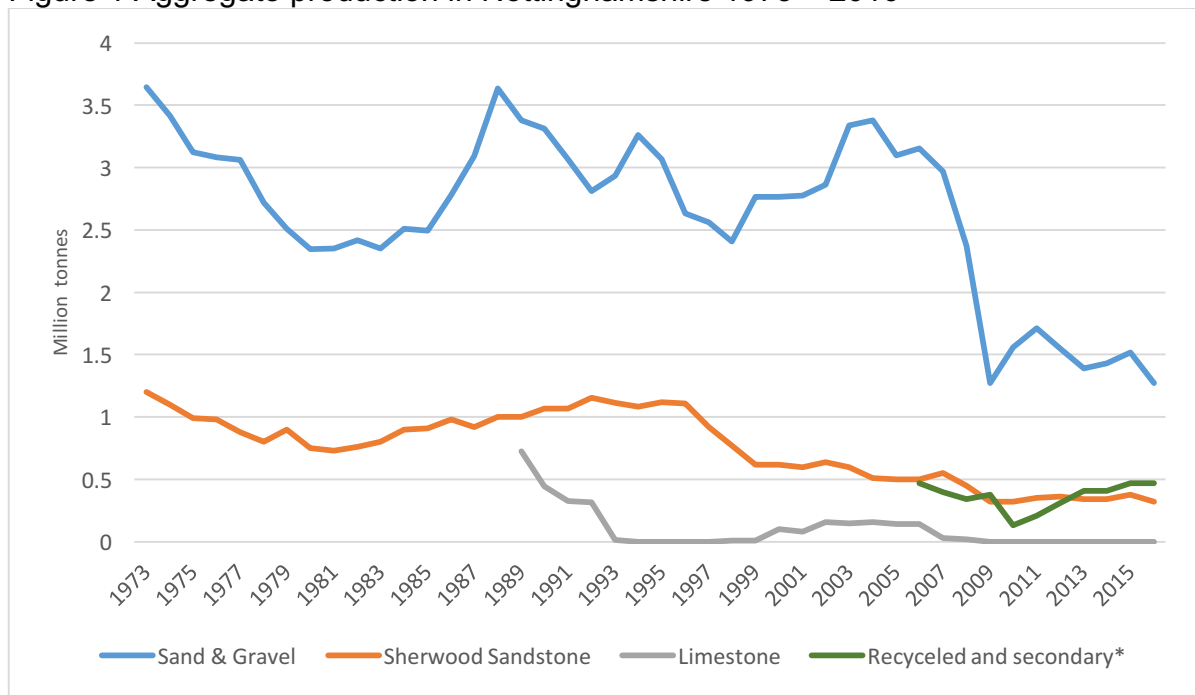
Aggregate minerals - estimating future demand

Aggregates make a significant contribution to the construction industry, accounting for around 90% of the total materials used. In Great Britain, around 225 million tonnes are consumed every year. Sustaining this level of demand is of national concern and raises significant planning and environmental issues.

Nottinghamshire has historically been a significant producer of the sand and gravel in the East Midlands, due to the high quality deposits found in the Trent and Idle River Valleys. The majority of the sand and gravel is used in the production of concrete. Building and asphalt sand is produced from the Sherwood Sandstone resource but in much smaller quantities. Nottinghamshire’s limestone production is very small compared to the regional output, reflecting the County’s limited resource of this mineral.

Recycled and secondary aggregates are also produced, however reliable data for this sector is limited. Figure 1 below shows aggregate sales from Nottinghamshire.

Figure 1 Aggregate production in Nottinghamshire 1973 – 2016



(* Estimated data for Recycled and Secondary aggregates)

The recent decline in production illustrated in Figure 1 reflects the impact of the economic downturn on the construction industry which has seen aggregate production fall to record lows.

National Policy on aggregate provision - demand forecasting

National policy requires each mineral planning authority to provide a steady and adequate supply of minerals through the preparation of an annual Local Aggregates Assessment based on a rolling average of 10 years sales data and other relevant local information. Minimum 'landbanks' of permitted reserves are also required to be maintained. For sand and gravel and Sherwood Sandstone the minimum landbank is 7 years (per mineral), for crushed rock the minimum is 10 years.

Based on the evidence set out in the most recent Local Aggregates Assessment which includes 2016 sales data, the demand forecast for each aggregate mineral is set out in Table 1.

Table 1 Nottinghamshire's proposed demand forecast

	Average 10 years sales (million tonnes)
Sand and gravel	1.7
Sherwood Sandstone	0.37
Crushed rock (limestone)	0.005

What will be the shortfalls over the Plan period?

Using the average sales data set out above, Nottinghamshire will need to provide 32.3 million tonnes of sand and gravel over the Plan period. Once existing permitted reserves are taken into account this leaves a shortfall of 17.8 million tonnes. For Sherwood Sandstone, 7.03 million tonnes will need to be provided over the Plan period. Once permitted reserves have been taken into account, the shortfall stands at 3.3 million tonnes. There is no shortfall for crushed rock.

Table 2 Demand for minerals over the plan period

	10 years sales average (million tonnes)	Requirement over the 19 year plan period (million tonnes)	Existing permitted reserves (million tonnes)	Shortfall over the plan period to 2036 (million tonnes)
Sand and gravel	1.7	32.3	17.5	17.8
Sherwood Sandstone	0.37	7.03	3.73	3.3
Crushed rock	0.005	0.095	3.34	-

Is this forecast robust?

The Local Aggregates Assessment published in October 2017 concluded that the average 10 year sales figure (covering the period 2007-2016) is considered the most appropriate basis for identifying future aggregates demand in Nottinghamshire, as there are no local circumstances which warrant a different approach.

The recession saw significant falls in the sales of aggregates at the national and local level. In Nottinghamshire this was particularly evident for sand and gravel as can be seen in Figure 1.

Taking account of the wider context, although the UK was formally in recession during 2008 and 2009, the effects on aggregates sales were felt until 2012. From this point onwards, sales at the national and East Midlands level have steadily increased. This suggests that demand for aggregates has increased, however for Nottinghamshire this is not the case as sales have remained flat and declined in 2016. This factor is likely to be combined with the minerals industry focusing on existing quarries outside the County and the lack of investment in new greenfield quarries in Nottinghamshire, even though adequate sand and gravel resources remain.

It is recognised that there may be alternative methodologies for calculating future demand for aggregates extraction in Nottinghamshire. We would therefore be interested to hear from individuals or organisations who can provide evidence as to why a different methodology could be more appropriate.

Q4 Do you think the average 10 year sales figure is the most suitable methodology for forecasting future aggregate demand in Nottinghamshire? If not please identify any alternatives you feel are realistic and deliverable and the evidence to support this approach.

Q5 Do you think the same methodology (most recent average 10 year sales) should be used for each aggregate or is there merit in using different methodologies for different aggregates?

Strategic approach to new mineral development

In line with national guidance, the sustainability of minerals development is key to planning for future needs. Given that minerals can only be worked where they are found, extensions to existing permitted quarries can enable the best use of the minerals. This is because the infrastructure to work and process the mineral is already in place and in some cases remaining reserves, which might not be viable to be worked on their own, can also be extracted.

However, extensions to existing quarries can result in potential social and/or environmental cumulative impacts in the area. National guidance states that potential sites should be based on their individual merits taking into account the need for the mineral, economic considerations, the potential positive and negative environmental impacts and the cumulative impacts of proposals in the area.

The Minerals Local Plan will need to identify site specific allocations for some mineral types that are in principle suitable for future minerals development, to provide a steady and adequate supply of minerals over the Plan period.

The choice of potential sites will be influenced by the minerals operators who acquire the rights to work the mineral, and they will have to demonstrate that the site is deliverable (the County Council does not get involved in the purchase of land for minerals development or in the actual working of the minerals). A call for sites will be undertaken as part of the evidence gathering process.

Depending on the availability of extensions to existing permitted quarries going forward, the suggested approach for the Minerals Local Plan will be to give priority to extensions to existing permitted quarries before new greenfield quarries are considered.

Q6 Do you think extensions to existing permitted quarries should be prioritised over new greenfield quarries?

Q7 Should different approaches (new sites/extensions to existing permitted quarries) be adopted for individual mineral types?

Sand and gravel provision

Based on the demand estimates set out in the previous section, the new Minerals Local Plan will need to provide an additional 17.8 million tonnes of sand and gravel reserves in order to meet estimated demand over the plan period to 2036.

In geological resource terms, adequate resources exist in Nottinghamshire to meet this estimated demand. However as minerals can only be worked where they are found this puts pressure on those areas naturally abundant with sand and gravel. As a result, sand and gravel extraction in Nottinghamshire has historically been concentrated in the Trent Valley near Nottingham, to the north of Newark and in the Idle Valley (see Plan 3).

Maintaining this geographical spread in the future would minimise the social and environmental impacts of quarrying on individual areas and provide minerals close to the main markets, reducing the distances sand and gravel will have to be transported by road. However, as sand and gravel reserves continue to be worked out it will be important to understand whether or not an adequate geographical spread can be maintained over the new Plan period.

Demand for sand and gravel from the wider Nottingham conurbation has historically seen quarries located close to the conurbation. This historic pattern started to break down as no new quarries have been opened to replace worked out quarries in this area. However, sand and gravel resources still exist, it is possible that over the next plan period new quarries could be opened around the Nottingham conurbation. A planning application for a quarry at Mill Hill, near Barton in Fabis, has been submitted to the County Council for determination. No decision has yet been taken, however, if approved the quarry would provide around 3.4 million tonnes which could serve the South Nottinghamshire area and the wider Nottingham conurbation.

A number of quarries are currently being worked near Newark. This area can theoretically serve a wide area including Nottingham, Mansfield and Ashfield and Rotherham and Doncaster due to the good road links (A1, A46, A617). Looking to the future, additional sand and gravel resources remain in this area and could be worked to contribute to overall demand.

The Idle Valley in the north of the County is well placed to serve the north Nottinghamshire markets and the Rotherham and Doncaster markets, and has traditionally done so. However in the longer term this is not sustainable as the sand and gravel resource in the Idle Valley is becoming worked out limiting future choices.

The concentration of sand and gravel production along the Trent Valley also has significant potential to impact both positively and negatively upon the distinctive biodiversity, archaeology and landscape character of this area. Therefore it is important for these issues to be considered when deciding on locations for future workings.

Given the location of some sand and gravel quarries alongside the River Trent, the potential exists to transport mineral by river barge, particularly over longer distances. Barge transport has historically been used to transport sand and gravel along the

River Trent to Yorkshire and Humberside from Besthorpe quarry north of Newark, although this has not been used in recent years. Past studies have shown that there is potential to increase water-borne freight on parts of the river. For sand and gravel quarries, barge transport would have the potential to reduce the number of HGV movements.

Q8 How important is it to maintain a geographical spread of sand and gravel quarries across the County (i.e. Idle Valley, near Newark and near Nottingham) to minimise the distance minerals are transported to markets?

Q9 Would it be more appropriate to prioritise specific areas above others?

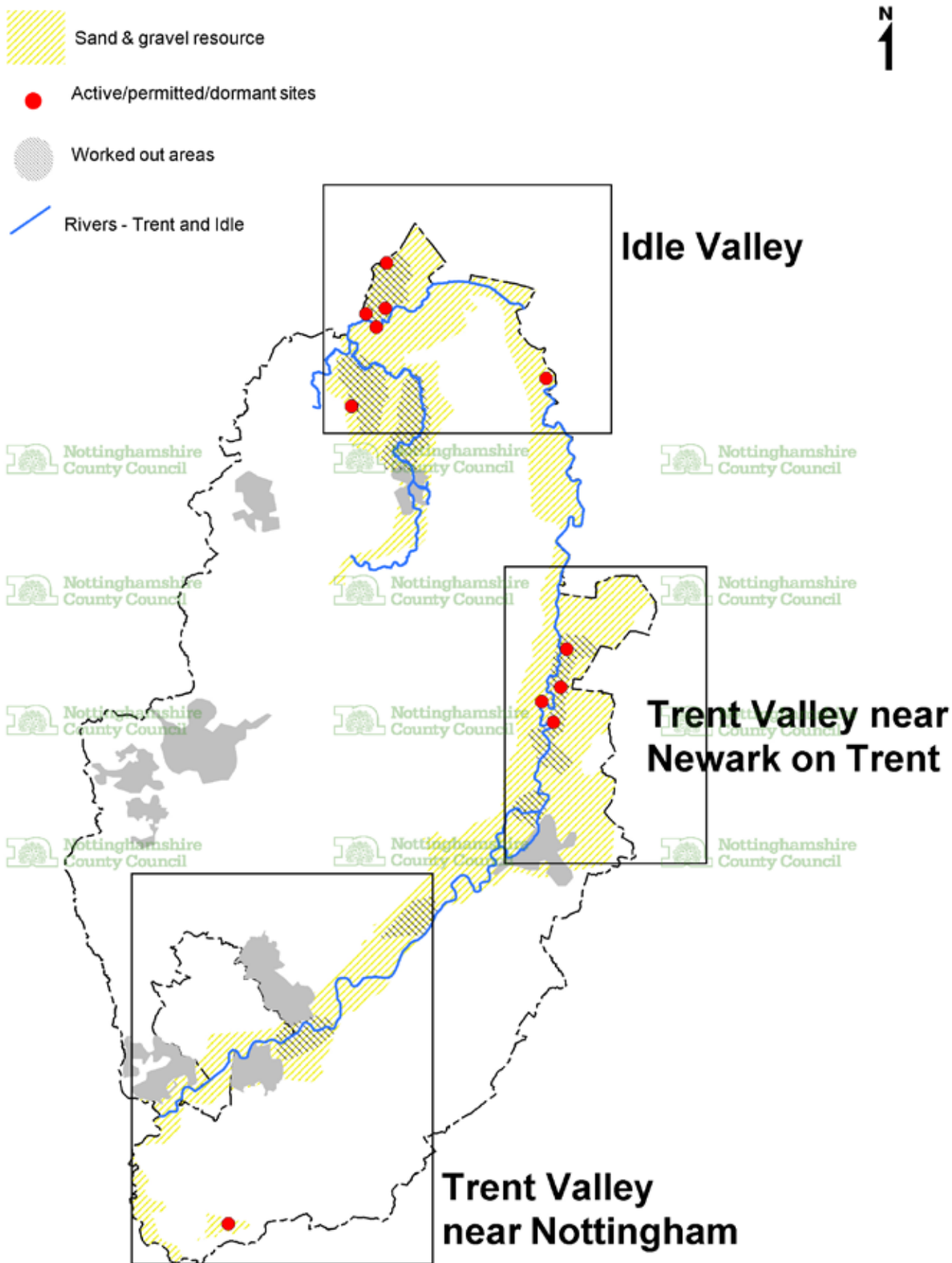
Q10 Is it economical to transport mineral by river barge and if so should proposed quarries with the potential for moving sand and gravel by river barge be prioritised over other proposals?



Did you know?

The average house uses up to 60 tonnes of aggregate mineral to build. It can be as high as 400 tonnes when associated infrastructure is included.

Plan 3 Geographical spread of sand and gravel quarries in Nottinghamshire



For Illustration Only

© Crown Copyright. All Rights Reserved. Nottinghamshire County Council 100019713 2017

British Geological Survey. 2013. Digital Geological Map of Great Britain 1:625 000 scale (DiGMapGB-625) Superficial Deposits data [CD-Rom] Version 1.10. Keyworth, Nottingham: British Geological Survey. Release date 03-07-2013

Sherwood Sandstone provision

Based on the demand estimates set out in the previous section, the new Minerals Local Plan will need to provide an additional 3.3 million tonnes of Sherwood Sandstone to meet estimated demand over the plan period to 2036.

In geological resource terms, adequate Sherwood Sandstone resources exist in Nottinghamshire and it is likely that extensions to existing permitted quarries will be sufficient to meet expected demand. Current production is spread amongst a number of permitted quarries worked between Nottingham and Mansfield and north of Worksop.

A planning application has been received by the County Council for an extension to the existing permitted Bestwood II quarry which would secure an additional 1.4 million tonnes of sand over a 10 year period. If planning permission is granted this will further reduce the required shortfall over the Plan period.

Current evidence indicates that no significant issues are thought to exist for Sherwood Sandstone provision over the Plan period.

A call for sites will be undertaken as part of the evidence gathering process which will identify new quarries or extensions to existing quarries that the minerals operators wish to be considered for inclusion in the Minerals Local Plan.

Q11 Are you aware of any other issues relating to Sherwood Sandstone provision that should be considered through the Minerals Local Plan review?



Crushed rock (limestone) provision

Around 80 million tonnes of crushed rock is extracted in Great Britain each year making it the largest aggregate mineral extractive industry in the Country, with the majority used as an aggregate in the construction sector. Although the East Midlands is one of the most important crushed rock producing areas, Nottinghamshire's resources are relatively limited with only one permitted quarry at Nether Langwith.

Nether Langwith Quarry serves as a satellite to a much bigger quarry at Whitwell in Derbyshire, however it has been mothballed since 2007. The original planning permission states that extraction should cease by the end of October 2017, however a further planning application has been submitted to the County Council seeking a time extension to enable working to continue until 2035. A decision on this application has yet to be made, however if it is approved the quarry would be adequate to cover the majority of the plan period.

Given that sales have been at zero for a number of years, resulting in the 10 year sales average falling significantly, the theoretical landbank in Nottinghamshire is rapidly increasing. As of December 2016 the landbank stood at 668 years. If Nether Langwith was reopened the landbank would start to fall.

There is no evidence to suggest that there is a shortage of crushed rock reserves in Nottinghamshire over the Plan period, however national guidance states that 'Minerals Planning Authorities should plan for a steady and adequate supply of aggregates by ensuring that large landbanks bound up in very few sites do not stifle competition'. Based on this guidance it will be important to understand whether or not there is likely to be an unmet demand for crushed rock in Nottinghamshire over the Plan period.

A call for sites will be undertaken as part of the evidence gathering process which will identify new quarries or extensions to existing quarries that the minerals operators wish to be considered for inclusion in the Minerals Local Plan.

Q12 Is there evidence to suggest that additional crushed rock reserves are required to meet demand in Nottinghamshire over the Plan period? If so please provide this evidence.

Q13 Are you aware of any other issues relating to crushed rock provision that should be considered through the Minerals Local Plan review?

Alternative aggregates

It is estimated that alternative aggregates now account for 29% of national consumption of aggregates – a contribution that has risen significantly since the 1980s. This is due to tax incentives, a greater awareness of environmental issues and changes within the construction industry. In Nottinghamshire the biggest sources of alternative aggregates are from some types of construction and demolition waste, ash from coal fired power stations, used railway ballast and desulphogypsum (a synthetic form of gypsum from flue gas desulphurisation plants associated with coal fired power stations).

Alternative aggregates score well in sustainability terms as they utilise materials that would otherwise end up as landfill and reduce the overall need for primary minerals. The new Minerals Local Plan should therefore take a positive approach to their use subject to environmental safeguards.

There are, however, limits on how far alternatives can substitute primary aggregates which is dependent on a range of issues such as availability, cost and the technical specifications required for specific end uses. The British Geological Survey and the Minerals Products Association suggest that the use of recycled and secondary aggregates have almost reached their natural limits.

In the future, some sources of material such as ash from coal fired power stations and desulphogypsum will reduce significantly as the remaining coal fired power stations in Britain are set to close by 2025.

The demand forecasts for primary aggregates set out earlier is additional to the contribution that alternative aggregates make to overall demand as alternative aggregates are already available on the open market.

For the new Minerals Local Plan alternative aggregates are not expected to raise any significant issues over the Plan period. Proposals for recycled aggregates processing facilities are dealt with under the Nottinghamshire and Nottingham replacement Waste Local Plan.

Q14 Are you aware of any issues relating to alternative aggregates that should be considered through the Minerals Local Plan review?

Brick clay provision

There are currently two brickworks and associated clay pits in the County both of which manufacture high quality facing bricks. These are located at Dorket Head near Arnold and Kirton near Ollerton.

Both pits exploit specific clay formations which are exposed along the western edge of the main outcrop (see Plan 4). Nearly all the mineral extracted in Nottinghamshire is red firing clay, but some cream firing clay is also dug at Kirton.

National guidance on brick clay extraction recognises that the high level of investment and ongoing maintenance justifies the provision of a 25 year landbank for individual brick works. Neither clay pit currently has sufficient reserves of clay for the plan period.

Permitted reserves at Dorket Head are expected to be adequate until 2030. A small extension to the south of the existing permitted clay pit could be possible in the future. If this extension is worked there is unlikely to be any further options to extend the existing clay pit.

Kirton clay pit only has adequate reserves until 2019, however a planning application has been submitted to the County Council for a western extension to the existing Kirton clay pit. If this application is granted permission it would secure adequate clay reserves for a further 25 years, well beyond the current Plan period.

The Minerals Local Plan will need to address the issue of how adequate clay reserves are maintained to supply the Dorket Head brick works in the future. Potential options include the identification of a site specific allocation (either in the vicinity of the existing Dorket Head works or a more remote clay pit) or the inclusion of a criteria based policy to ensure supply can be maintained over the plan period whilst ensuring any impacts on the environment or local communities is minimised.

A call for sites will be undertaken as part of the evidence gathering process which will identify new quarries or extensions to existing quarries that the minerals operators wish to be considered for inclusion in the Minerals Local Plan.

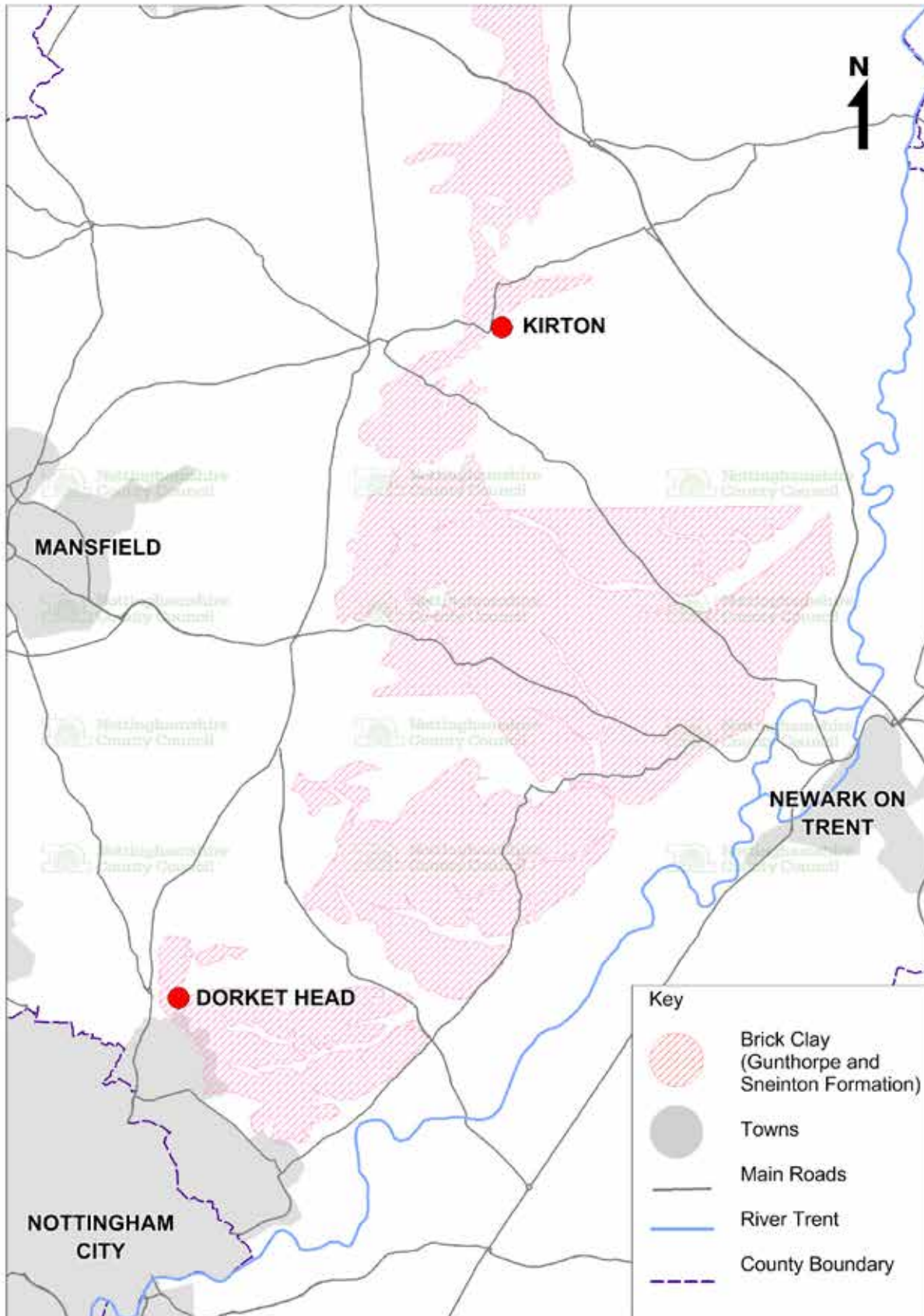
New brick works

The Minerals Local Plan will need to consider the possibility of new brick works coming forward, however, at present there are no known proposals.

Q15 Should the Plan identify a specific replacement quarry (remote extension / new site) to Dorket Head clay pit or should a criteria based policy be developed to ensure an adequate supply of clay can be maintained over the plan period?

Q16 Is a criteria based policy the most suitable approach to cover the potential for new brick works and associated clay pits?

Plan 4 Brick Clay resource



For Illustration Only

© Crown Copyright. All Rights Reserved. Nottinghamshire County Council 100019713 2017

British Geological Survey. 2013. Digital Geological Map of Great Britain 1:625 000 scale (DiGMapGB-625) Superficial Deposits data [CD-Rom] Version 1.10. Keyworth, Nottingham: British Geological Survey. Release date 03-07-2013

Gypsum provision

In Nottinghamshire two distinct gypsum resources are worked. The Marbleagis drift mine at East Leake exploits the 'Tutbury Gypsum' that supplies an associated plasterboard plant and plaster works. Bantycok Quarry near Balderton, Newark exploits the 'Newark Gypsum' which comprises a number of relatively thin seams. The lowest seams are very high quality and are the only mineral of this grade to be found in the UK. It is used in specialist plasters and a wide range of other products ranging from dentistry to food additives. The main plaster products produced in Nottinghamshire supply much of southern and eastern England and the Midlands whilst the specialist products have national and international markets.

Since the mid-1990s national and local gypsum production declined as much of the natural gypsum used in plasterboard was replaced with 'desulphogypsum' (DSG). DSG is a high quality synthetic gypsum produced as a by-product from flue gas desulphurisation plants that have been retrofitted at most coal fired power stations, including all three stations in Nottinghamshire. However this situation is changing as the availability of DSG is rapidly declining as the use of coal as an energy source is falling and the remaining coal fired power stations are due to close by 2025. Going forwards the use of natural gypsum is set to increase, and will have to be sourced from new resources in the UK or from imports.

Permitted reserves at Marbleagis Mine (within Nottinghamshire) should be sufficient until at least 2026. Thereafter the only option is for the mine to extend eastwards towards Wymeswold in Leicestershire. Bantycok Quarry has permitted reserves until 2027 although a scoping request has been submitted to the County Council seeking a time extension to 31st December 2030.

Identifying new reserves is a longer term issue that the Minerals Local Plan will need to address. Land to the south of Bantycok Quarry was allocated in the 2005 Minerals Local Plan and could be a potential option for inclusion in the new Minerals Local Plan to maintain reserves over the plan period.

Other potential options for new gypsum quarries may exist along the outcrop which extends as a belt running to the north and south between East Leake and Newark. (See Plan 2) The need for specific grades of gypsum will dictate the available locations for new quarries to be located.

Q17 Should the plan seek to identify specific site allocations for gypsum provision or should a criteria based policy be developed to ensure an adequate supply of gypsum can be maintained over the Plan period?

Q18 Are you aware of any issues regarding the provision of gypsum that should be considered as part of the Minerals Local Plan review?

Silica Sand provision

Silica sand is a non-aggregate form of Sherwood Sandstone that is also known as 'industrial sand'. One permitted quarry exists in Nottinghamshire at Two Oaks Farm near Kirkby in Ashfield. This quarry produces special sands for a variety of industrial, construction, sporting and equestrian markets. In addition some aggregate sand is also produced. In operational terms the extraction of silica sand is similar to aggregate sand, the main distinction being that much larger and more sophisticated washing and processing plants are required.

No significant issues are expected to be raised over the Plan period to 2036 as reserves at Two Oaks Farm are forecast to last until approximately 2053 which is more than adequate to satisfy the minimum 10 year landbank of permitted reserves as set out in national guidance.

A criteria based policy is considered appropriate to cover any potential future requirements to ensure supply can be maintained over the Plan period whilst ensuring any impacts of the environment or local communities is minimised.

Q19 Are you aware of any issues regarding the provision of Silica Sand that should be considered as part of the Minerals Local Plan review?

Did you know?

Minerals are not only used in construction, but also in a range of more surprising products such as cosmetics, drugs and food.



Industrial Dolomite provision

No industrial dolomite is currently worked in Nottinghamshire however a suitable resource is known to exist near Holbeck in the west of the County. This resource lies to the south of a large quarry at Whitwell in Derbyshire where industrial dolomite is quarried alongside aggregate stone on a large scale. (See Plan 5)

Typically around 1 million tonnes are extracted at Whitwell quarry every year with the tonnage being split evenly between the industrial and aggregate mineral. The industrial dolomite feeds two on-site kilns that convert the raw dolomite in to a range of refractory and other products which are exported to 28 countries spanning four continents. The biggest end-user of this product is the iron and steel industry however it is also used in a variety of chemicals, agriculture and glass making.

The international importance of the Whitwell resource reflects the scarcity of this high quality mineral which locally occurs within the Magnesian Limestone resource that is predominantly worked for aggregates. The only other comparable resource in the UK is found in Thrislington, Durham where production is focussed on supplying domestic markets.

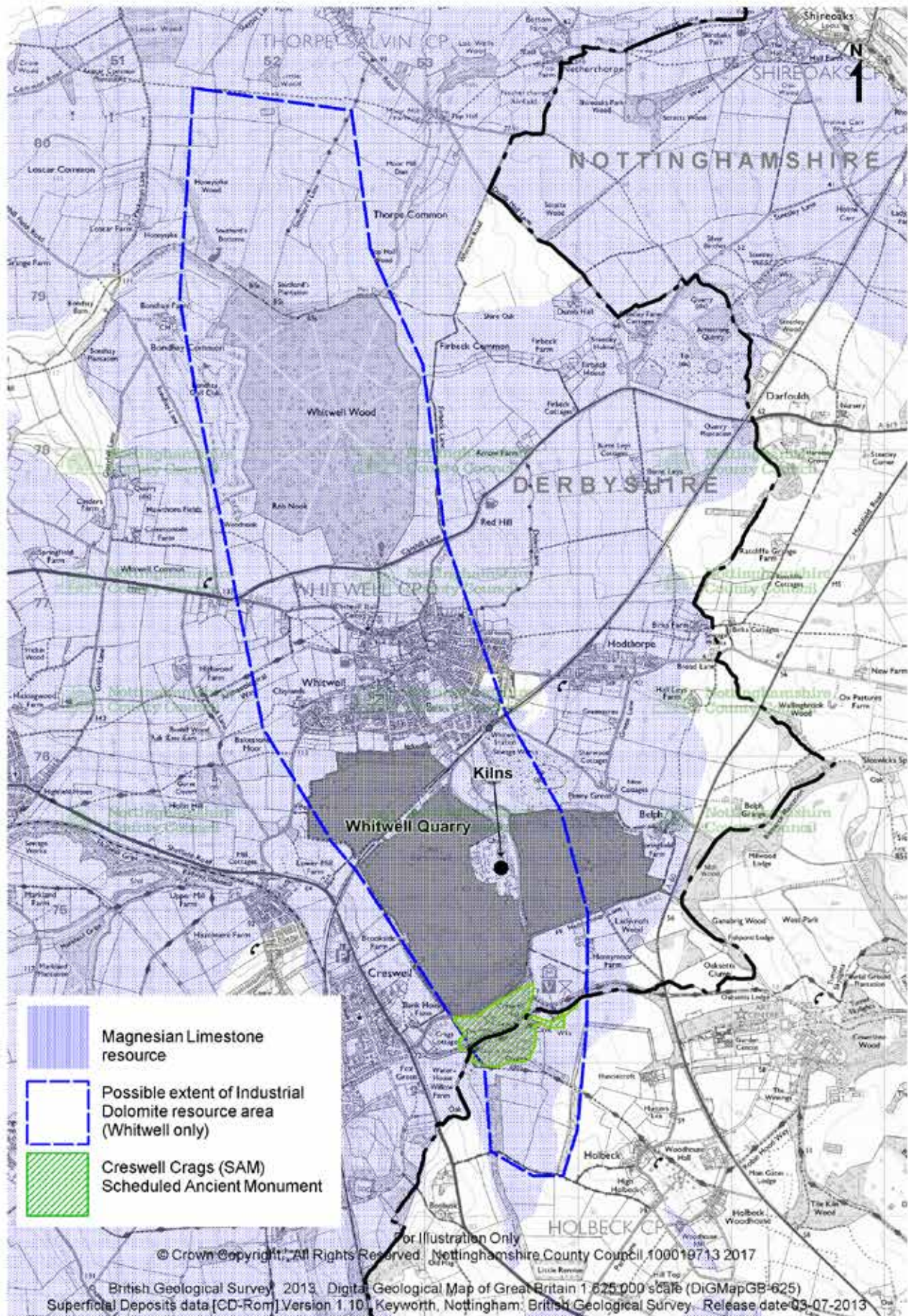
Subject to the granting of planning permission for a series of small extensions to the existing quarry (being dealt with by Derbyshire County Council), permitted reserves at Whitwell are likely to be adequate until 2033 for industrial dolomite (and 2040 for aggregate grade limestone). Further options to extend the quarry within Derbyshire are very limited and therefore the resource found in Nottinghamshire could be worked as a satellite extension to the existing Whitwell quarry.

Given the need to blend different grades of dolomite to meet specific customer requirements, any possible quarry in Nottinghamshire would need to be operational before reserves are worked out in Derbyshire.

A number of nationally important designations also occur in the area including the Creswell Crags Scheduled Ancient Monument categorisation, a Site of Special Scientific Interest and the Welbeck Abbey Registered Park and Garden. Creswell Crags is also included on the UK Tentative list of potential sites for World Heritage Nomination. Any proposals would require careful consideration of the potential impacts on the historic environment offset against the international need for the mineral.

Q20 Are you aware of any issues regarding the provision of industrial dolomite that should be considered as part of the Minerals Local Plan review?

Plan 5 Industrial dolomite resource



Building stone provision

The continued quarrying of local building stones play an important role in helping to preserve the historic environment and enhancing the local distinctiveness of an area. Local stone is needed to allow existing historic buildings to be properly repaired and it also means new buildings in historic areas can blend in more effectively.

The only building stone resource currently worked in Nottinghamshire is 'Bulwell Stone', a buff coloured limestone found between Bulwell and Hucknall. It is used as a local building stone and more widely as a walling stone fronting many older properties in Nottingham and its suburbs. Extraction is now limited to Yellowstone Quarry at Linby.

Historically the Bulwell Stone and the Magnesian Limestone were worked much more widely between Nottingham and Mansfield and used on a variety of building projects including Southwell Minster, Ely Cathedral and the lower courses of the Houses of Parliament.

National policy on building stone promotes the conservation and use of the building stone industry and resources to ensure that adequate provision can be made to help conserve the historic built environment and local distinctiveness.

Yellowstone Quarry has estimated reserves of around 120,000 tonnes. At permitted extraction rates this would be adequate until 2035, however the quarry is currently inactive and therefore permitted reserves are likely to last beyond the Plan period.

Based on the above and the fact that no new sites have been put forward in a number of years, there is no evidence to suggest that there will be a shortage of building stone reserves in Nottinghamshire over the Plan period. However over the life of the Plan, demand for a specific building stone could result in the need to develop a new quarry.

It is therefore proposed to develop a criteria based policy approach in the new Minerals Local Plan to cater for any need for specific building stone reserves over the Plan period whilst ensuring any impacts on the environment or local communities is minimised.

Q21 Is there evidence to suggest that additional building stone reserves are required to meet demand in Nottinghamshire over the plan period? If so please provide this evidence.

Q22 Are you aware of any other issues relating to building stone provision that should be considered through the Minerals Local Plan review?

Coal provision

Most of Nottinghamshire's coal resources are deeply buried and have to be exploited by deep mining. It is only in the far west of the County along the Erewash Valley where the coal measures are exposed, that surface (opencast) extraction is possible. The last deep mine in Nottinghamshire located at Thoresby Colliery closed in July 2015. A proposal to work surface mined coal at Shortwood near Cossall has planning permission but has yet to be worked.

Coal recovery

Historical coal processing was often inefficient and substantial quantities of coal were left in the spoil. At some sites it is economic to recover this coal, which can amount to several hundred thousand tonnes in a single large tip. One example of this was Langton Colliery tip located near Kirkby-in-Ashfield that was worked between 2011 and 2013.

Coal pond fines created during the normal processing of coal, can also be used as a fuel at coal fired power stations. The availability of this material is dependent on the availability of suitable colliery lagoons, however it can provide material that would otherwise be wasted. No schemes are currently proposed but may come forward over the life of the plan.

National guidance states that planning permission should not be granted for the extraction of coal unless it can be made environmentally acceptable through planning conditions or if not where local or national benefits outweigh the likely impacts. There are no production targets as the Government believes this is a matter for the markets.

Given that deep mined coal no longer takes place in Nottinghamshire and the only surface mine has yet to be worked, it is not expected that significant issues will be raised for the extraction of virgin coal over the Plan period. There is potential (albeit limited) for the re-working of old colliery spoil tips and colliery lagoons in Nottinghamshire, and so the Minerals Local Plan will need to address this.

A criteria based policy is considered appropriate to cover any potential future requirements for coal provision or the reworking of colliery spoil tips or lagoons.

Q23 Are you aware of any issues relating to coal extraction that should be considered through the Minerals Local Plan review?

Hydrocarbons provision

Hydrocarbon minerals, which comprise oil and gas, are the most important energy minerals produced and consumed in the UK. In 2014 UK consumption stood at 131 million tonnes, however 51 million tonnes of this was imported, a figure that has been steadily increasing in recent years. As a result there is a strong impetus to explore and develop new domestic sources of oil and gas.

National guidance says that when planning for on-shore oil and gas development, including unconventional hydrocarbons, Mineral Planning Authorities should include criteria based policies for each of the exploration, appraisal and production phases of hydrocarbon extraction.

Planning permission is one of the main regulatory requirements that operators must meet before drilling a well for both conventional and unconventional hydrocarbons. The County Council is responsible for granting permission for the location of any wells and well pads, and will impose conditions to ensure that the impact on the land is acceptable. However it is not the only regulatory body that permission for extraction is required from. Others include:

- The Oil and Gas Authority – Issues Petroleum Licences, gives consent to drill under the Licence once other permissions and approvals are in place, and has responsibility for assessing risk of, and monitoring, seismic activity, as well as granting consent to flaring or venting;
- Environment Agency (EA) – protects water resources (including groundwater aquifers), ensures appropriate treatment and disposal of mining waste, emissions to air, and suitable treatment and management of any naturally occurring radioactive materials;
- Health and Safety Executive (HSE) – regulates the safety aspects of all phases of extraction, in particular responsibility for ensuring the appropriate design and construction of a well casing for any borehole.

Historically two main forms of hydrocarbons have been worked in Nottinghamshire; oil and mine gas. However other unconventional hydrocarbons such as coal bed methane and shale gas extraction are being developed and could be worked over the Plan period. Plan 6 identifies the hydrocarbon resources and sites in Nottinghamshire. The key issues for each hydrocarbon type are set out below.

Oil

Oil has been extracted on a small scale since the Second World War when oil reservoirs in deeply buried sandstones were identified at Eakring. Since then further oil fields have been identified mostly in north Nottinghamshire but ranging as far south as Rempstone near the boundary with Leicestershire.

The oil recovered in Nottinghamshire is of high quality, and mainly used in the plastics and chemical industries, rather than as a fuel. The majority of oil is taken by

rail from the central collecting station at Gainsborough to refineries at Immingham, in North East Lincolnshire.

Oil exploration and production has raised few concerns and it is not expected to raise any critical issues for the new Minerals Local Plan to resolve.

Mine gas

Coal seams exposed during deep mining release methane trapped within them. This methane also known as 'mine gas', is a major mining hazard. Once mining and ventilation ceases methane can fill the mineshafts and other voids and escape to the surface where it can pose a threat to health and safety in the locality. The situation has become much more prevalent recently because of the number of collieries that have closed over the last 30 years.

Mine gas can be recovered and burnt to generate electricity, an activity that is very sustainable in that it reduces the escape of one of the most potent 'greenhouse gases' into the atmosphere and converts it into a useful fuel. This in turn reduces the demand for other finite fossil fuels.

Coal bed methane

Coal bed methane extraction involves removing methane directly from the coal seam without actually mining the coal. This industry is most developed in the USA, whilst in the UK and Europe it remains in its infancy. Interest in this industry is developing and it could become a significant energy source for the future. In Nottinghamshire a number of proposals for the exploration and development of coal bed methane have been permitted but have not yet been developed. Nearly all of Nottinghamshire overlies a potential coal bed methane resource but the most promising prospects are believed to exist in the eastern half of the County.

The environmental impacts of coal bed methane extraction are similar to on-shore oil although the wells may be more numerous and closely spread. Water pollution is a potential issue as water pumped out of the coal seams can be very saline and therefore needs careful disposal.

As the future economic interest in this mineral is very uncertain it is unknown if it will raise any critical issues for the new Minerals Local Plan.

Shale gas

Vast quantities of methane exist in many shale deposits worldwide and recent technological advances have now made it economically possible to exploit them. Shale gas extraction involves vertical and horizontal drilling to reach the deeply buried shale rock layer. A mixture of water and sand is then pumped under high pressure into the bore hole to fracture the rock (a process known as 'fracking'). The gas trapped in the rock is then released and can be collected.

Like coal bed methane extraction, this technology is most developed in the USA where it has seen a period of very rapid development and is now exploited on a large

scale. The UK also has a significant, but as yet largely untested, potential shale gas resource. In Nottinghamshire potential shale gas resources are thought to exist in deeply buried shale deposits that exist below much of the south and north areas of the County. Three exploration wells have been granted planning permission in the north of the County but to date no further planning applications for appraisal or extraction have been submitted.

Further information regarding shale gas development can be found in the planning and environment section of the County Council website:
<http://www.nottinghamshire.gov.uk/planning-and-environment/shale-gas-development>

A criteria based policy for hydrocarbons ensuring that a proposed development does not have any unacceptable impacts on the environment or residential amenity at each phase (exploration, appraisal, extraction) is considered appropriate to address future conventional and unconventional hydrocarbon development in Nottinghamshire.

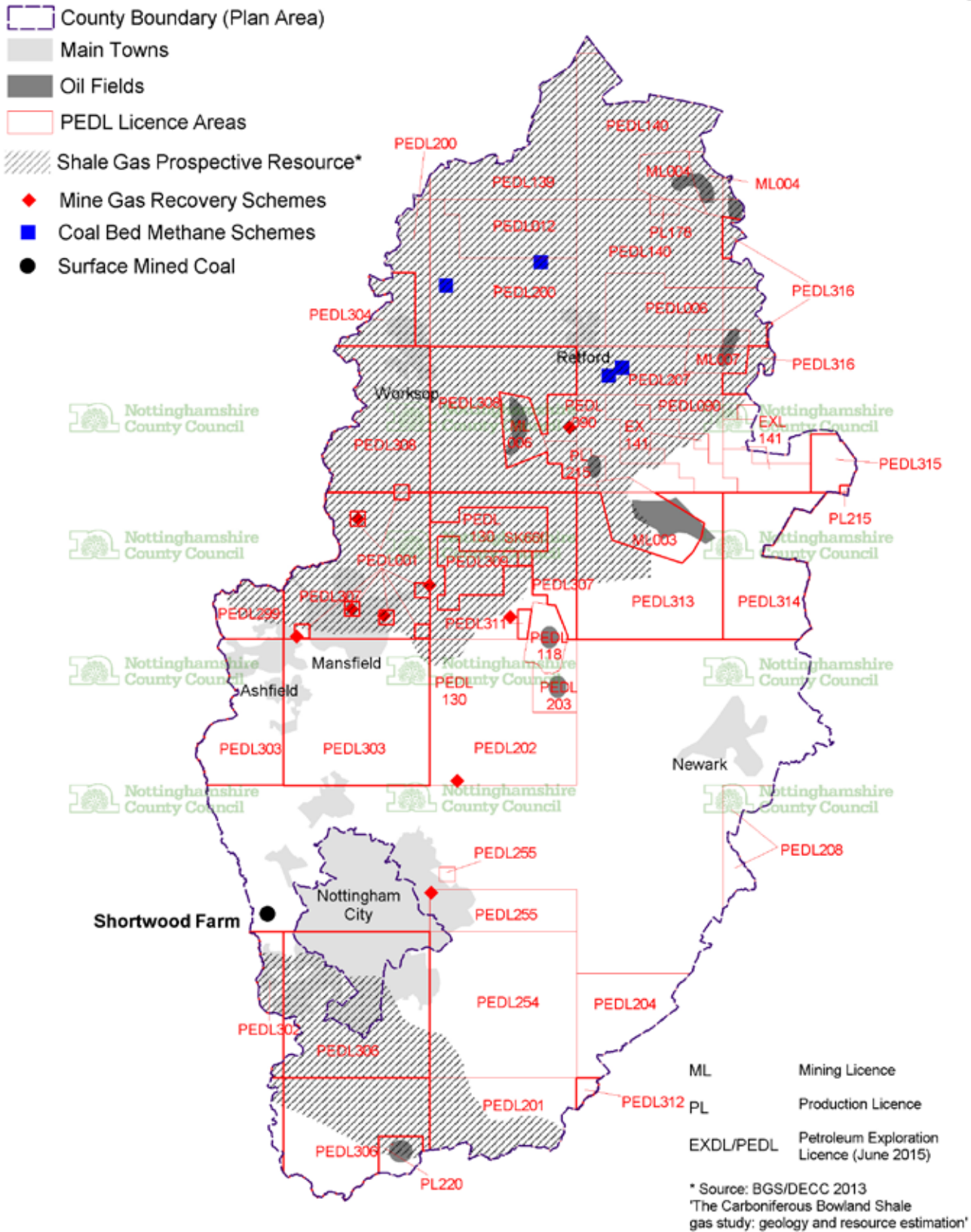
Q24 Are you aware of any issues relating to hydrocarbon extraction that should be considered through the Minerals Local Plan review?

Did you know?

Every person in the UK will use around 10 tonnes of mineral each year - 10 tonnes equates to the weight of 7 average family cars.



Plan 6 Coal and hydrocarbons in Nottinghamshire



For Illustration Only

© Crown Copyright. All Rights Reserved. Nottinghamshire County Council 100019713 2017

British Geological Survey. 2013. Digital Geological Map of Great Britain 1:625 000 scale (DiGMapGB-625) Superficial Deposits data [CD-Rom] Version 1.10. Keyworth, Nottingham: British Geological Survey. Release date 03-07-2013

4. Development Management policies

Development Management (DM) policies provide the more detailed criteria against which future planning applications will be assessed. These policies cover topics such as environmental pollution, traffic, biodiversity, the historic environment and after-use of sites and are especially important in protecting residential and other local amenity. The broad aim is to ensure that the impacts of development proposals are identified, and where appropriate mitigated so that only environmentally acceptable proposals are permitted.

The proposed policy topics include, as a minimum:

- Protecting local amenity
- Water resources and flood risk
- Agricultural land and soil quality
- Protection and enhancement of biodiversity and geodiversity
- Landscape character
- Historic environment
- Public access
- Cumulative impact
- Highways safety and vehicle movements/routeing
- Airfield safeguarding
- Planning obligations
- Restoration, afteruse and aftercare
- Minerals safeguarding and consultation areas
- Incidental mineral extraction
- Irrigation lagoons
- Borrow pits
- Associated industrial development
- Mineral exploration

Q25 Do you agree with the proposed development management policy areas? Are there any others that should be covered?

5. Minerals Safeguarding and Consultation Areas

The National Planning Policy Framework requires that known locations of specific minerals be safeguarded from needless sterilisation by non-minerals development (such as built development) and that where it is necessary for non-minerals development to take place, there should be prior extraction of the mineral where practicable and environmentally feasible.

The Mineral Safeguarding Areas (MSA) identify mineral resources which are worthy of safeguarding, however the identification of mineral safeguarding areas does not provide a presumption in favour of working the mineral, and is not a guarantee that there is mineral present of viable quantity or quality.

Minerals Consultation areas must be identified in the Minerals Local Plan, which require District and Borough authorities to consult the Mineral Planning Authority over non-minerals development. In Nottinghamshire the consultation areas are based on the minerals safeguarding areas and are therefore identical. As such it is proposed to include one designation on the proposals map.

For the purposes of safeguarding, Nottinghamshire has eight distinct mineral resources. These are:

- Sand and gravel;
- Sherwood Sandstone;
- Alluvial Sand and Gravel;
- Limestone (including building stone);
- Industrial dolomite;
- Brick Clay;
- Gypsum;
- Surface Coal

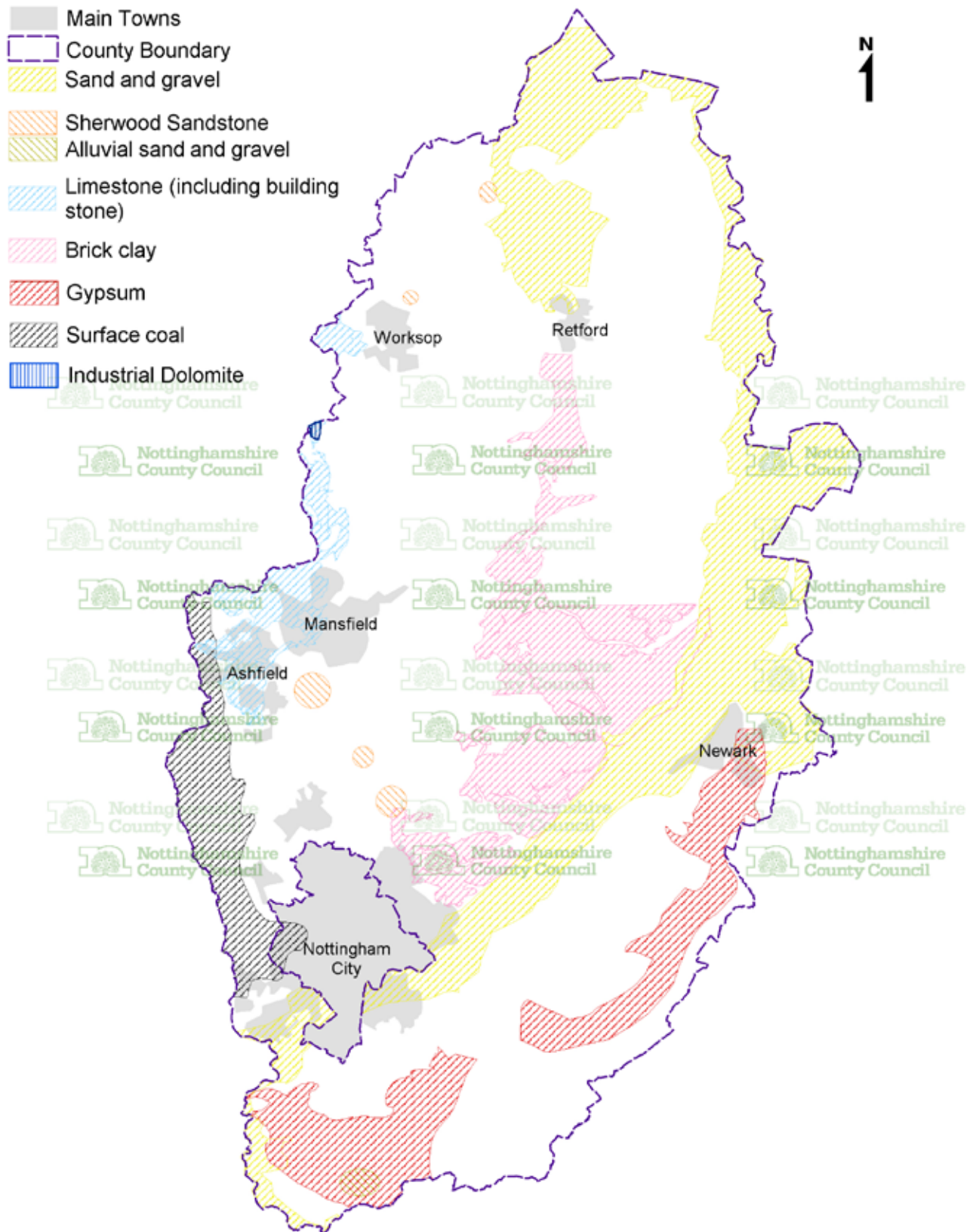
Plan 7 shows the proposed extent of the minerals safeguarding.

National policy also refers to the importance of safeguarding minerals infrastructure such as wharves and railheads to ensure that facilities remain to enable the transportation of minerals. There are no railheads within Nottinghamshire however one wharf at Colwick industrial estate is proposed to be safeguarded.

It is proposed to include a policy ensuring that economically important mineral resources will be safeguarded from needless sterilisation, but where this cannot be demonstrated prior extraction of the mineral should be sought where practicable.

Q26 Are you aware of any issues relating to minerals safeguarding that should be considered through the Minerals Local Plan review?

Plan 7 Minerals safeguarding in Nottinghamshire



For Illustration Only

© Crown Copyright. All Rights Reserved. Nottinghamshire County Council 100019713 2017

British Geological Survey. 2013. Digital Geological Map of Great Britain 1:625 000 scale (DiGMapGB-625) Superficial Deposits data [CD-Rom] Version 1.10. Keyworth, Nottingham: British Geological Survey. Release date 03-07-2013

Appendix A: Questions set out in the Issues and Options document

Q1: Do you think any further information should be included in the overview of the area?

Q2: Do you agree with the draft vision? Are there other things we should include?

Q3: Are the strategic issues appropriate? Are there others we should consider?

Q4: Do you think the average 10 year sales figure the most suitable methodology for forecasting future aggregate demand in Nottinghamshire. If not please identify any alternatives you feel are realistic and deliverable and the evidence to support this approach.

Q5: Do you think the same methodology (most recent average 10 years sales) should be used for each aggregate or is there merit in using different methodologies for different aggregates?

Q6: Do you think extensions to existing permitted quarries should be prioritised over new greenfield quarries?

Q7: Should different approaches (new sites/extensions to existing permitted quarries) be adopted for individual mineral types?

Q8: How important is it to maintain a geographical spread of sand and gravel quarries across the County (ie Idle Valley, near Newark and near Nottingham) to minimise the distance minerals are transported to markets?

Q9: Would it be more appropriate to prioritise specific areas above others?

Q10: Is it economical to transport mineral by river barge and if so should proposed quarries with the potential for moving sand and gravel by river barge be prioritised over other proposals?

Q11: Are you aware of any other issues relating to Sherwood Sandstone provision that should be considered through the Minerals Local Plan review?

Q12: Is there evidence to suggest that additional crushed rock reserves are required to meet demand in Nottinghamshire over the Plan period? If so please provide this evidence.

Q13: Are you aware of any other issues relating to crushed rock provision that should be considered through the Minerals Local Plan review?

Q14: Are you aware of any issues relating to alternative aggregates that should be considered through the Minerals Local Plan review?

Q15: Should the Plan identify a specific replacement quarry (remote extension/ new site) to Dorket Head clay pit or should a criteria based policy be developed to ensure that an adequate supply of clay can be maintained over the Plan period?

Q16: Is a criteria based policy the most suitable approach to cover the potential for new brick works and associated clay pits?

Q17: Should the plan seek to identify specific site allocations for Gypsum provision or should a criteria based policy be developed to ensure an adequate supply of Gypsum can be maintained over the Plan period?

Q18: Are you aware of any issues regarding the provision of Gypsum that should be considered as part of the Minerals Local Plan review?

Q19: Are you aware of any issues regarding the provision of silica sand that should be considered as part of the Minerals Local Plan review?

Q20: Are you aware of any issues regarding the provision of industrial dolomite that should be considered as part of the Minerals Local Plan Review?

Q21: Is there evidence to suggest that additional building stone reserves are required to meet demand in Nottinghamshire over the Plan period? If so please provide this evidence

Q22: Are you aware of any other issues relating to building stone provision that should be considered through the Minerals Local Plan review?

Q23: Are you aware of any issues relating to coal extraction that should be considered through the Minerals Local Plan review?

Q24: Are you aware of any issues relating to hydrocarbon extraction that should be considered through the Minerals Local Plan review?

Q25: Do you agree with the proposed development management policy areas? Are there any others that should be covered?

Q26: Are you aware of any issues relating to minerals safeguarding that should be considered through the Minerals Local Plan review?





**Nottinghamshire
County Council**

W nottinghamshire.gov.uk/minerals
E planning.policy@nottscc.gov.uk
T 0300 500 80 80

Planning Policy Team, Place Dept,
Nottinghamshire County Council, County Hall,
West Bridgford, Nottingham, NG2 7QP