

Nottinghamshire Local Transport Plan Evidence Base Report

13. Cycling

13.1 Cycle facilities

13.1.1 Local cycle network

There are over 350km of cycle route in Nottinghamshire, as detailed in table 98 below, of which 17% is lit. In addition to the formal cycle network detailed above there is also a suggested network of signed and unsigned advisory quieter roads to cycle on which avoid roads with large volumes of traffic. These are often used as an alternative where formal facilities cannot be provided because it is not feasible to do so.

Table 98: Length of cycle network in Nottinghamshire split by district

District	Length of cycle network (km)			Total
	On-road cycle lane	Off-road shared use	Off-road cycle track	
Ashfield	4.64	42.44	22.01	69.09
Bassetlaw	7.88	13.84	50.46	72.18
Broxtowe	1.30	12.12	9.08	22.50
Gedling	0.04	3.07	6.19	9.30
Mansfield	1.41	47.00	14.92	63.33
Newark & Sherwood	4.72	12.96	40.77	58.45
Rushcliffe	1.34	26.16	31.61	59.11
Nottinghamshire	21.33	157.58	175.04	353.95

13.1.2 Maps of Nottinghamshire's cycle network

Nottinghamshire has an extensive cycle network across the county made up of formal facilities such as on-road and off-road tracks, as well as signed routes along quieter roads. Map of the on-road and off-road tracks in each of the districts in Nottinghamshire are detailed below in figures 136-142.

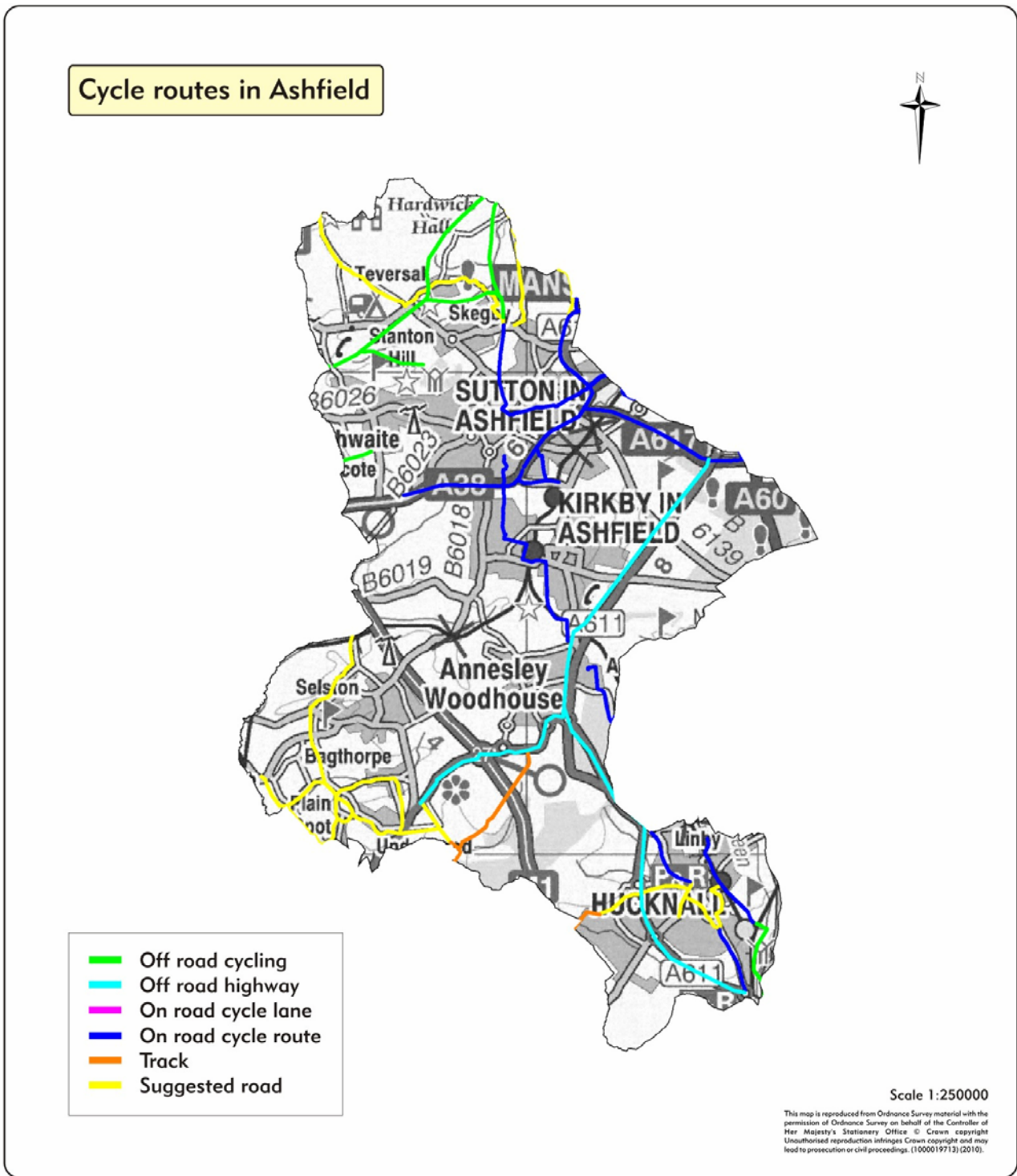


Figure 136: Cycling routes in Ashfield district

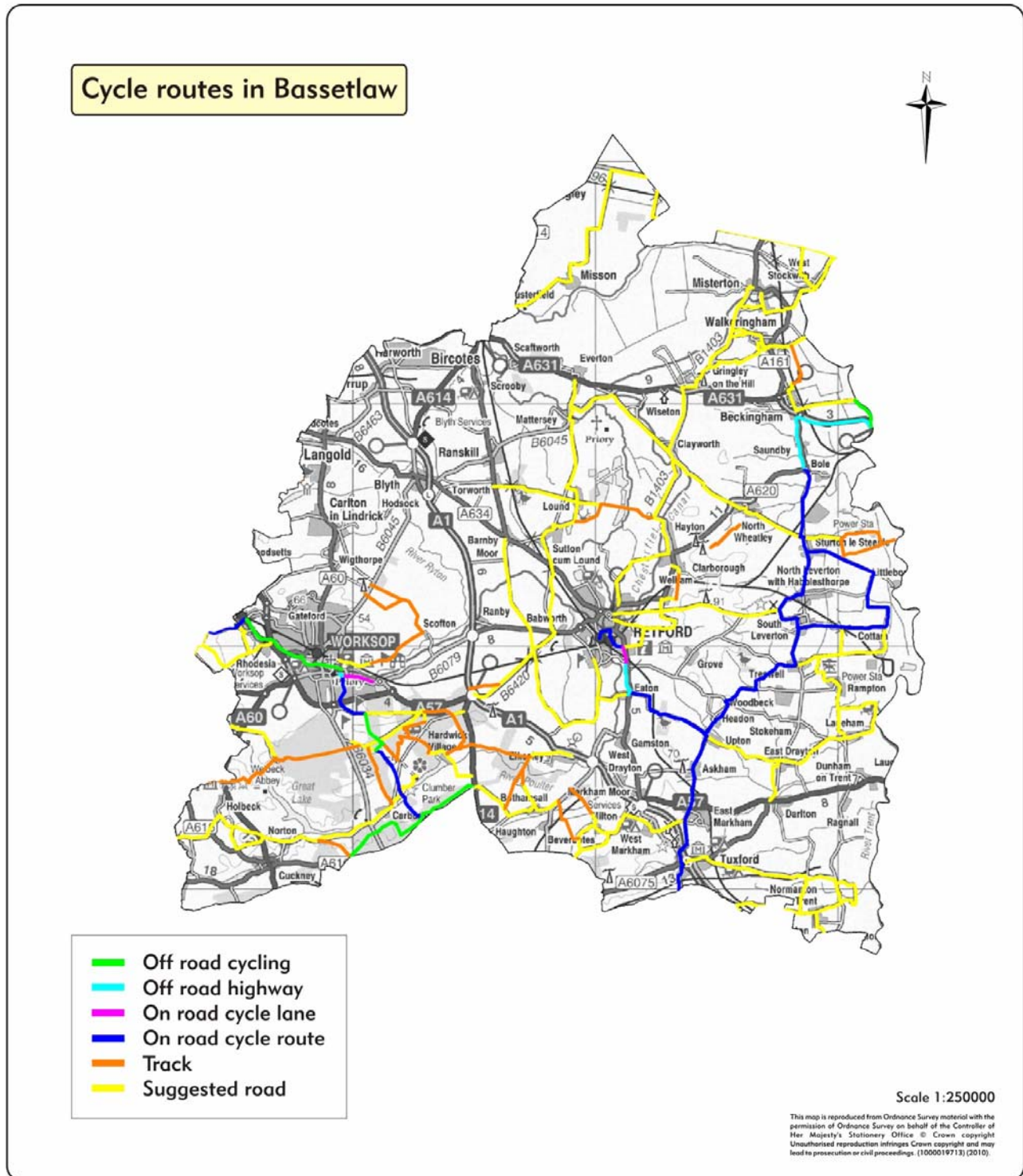


Figure 137: Cycling routes in Bassetlaw district

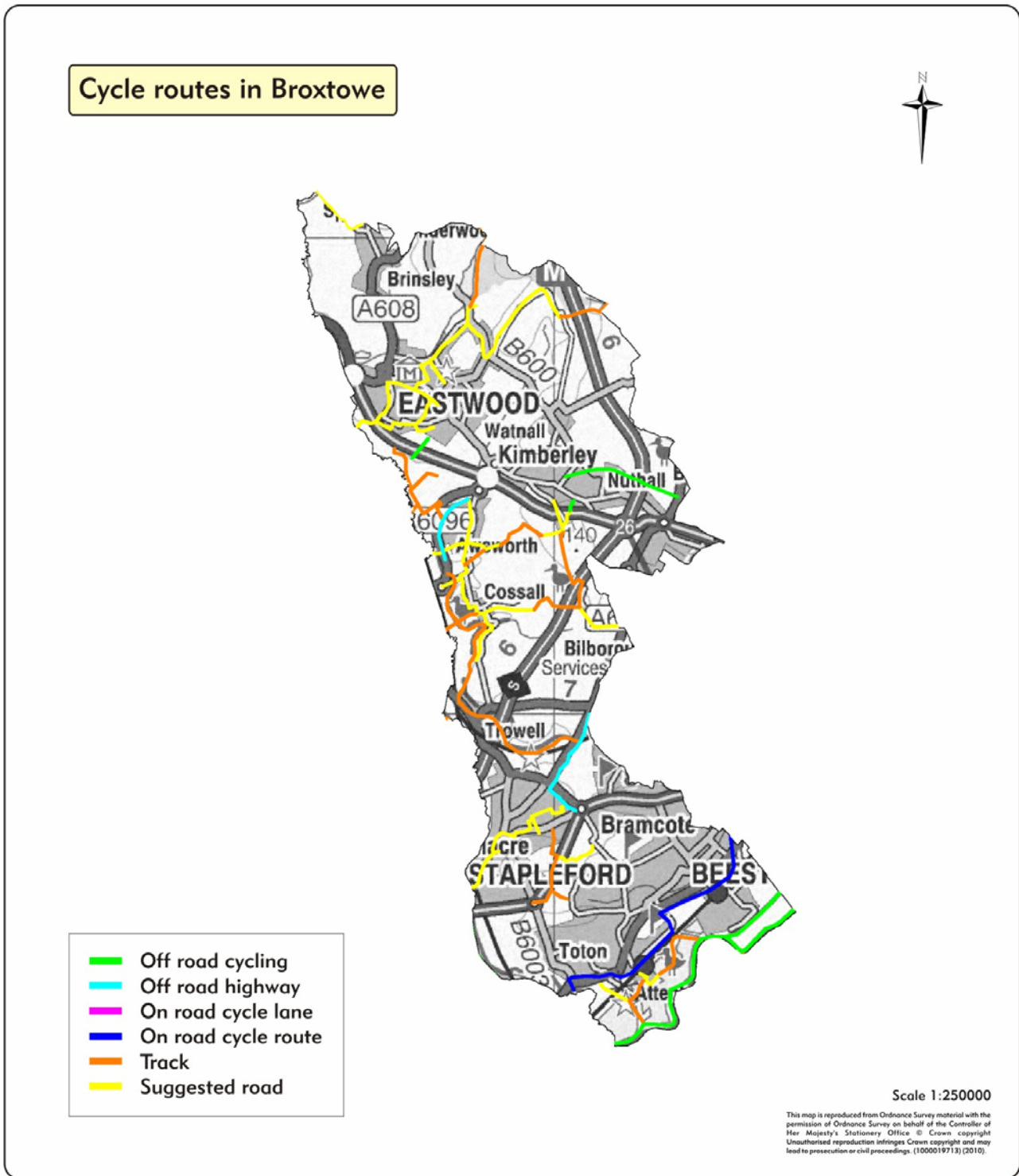


Figure 138: Cycling routes in Broxtowe district

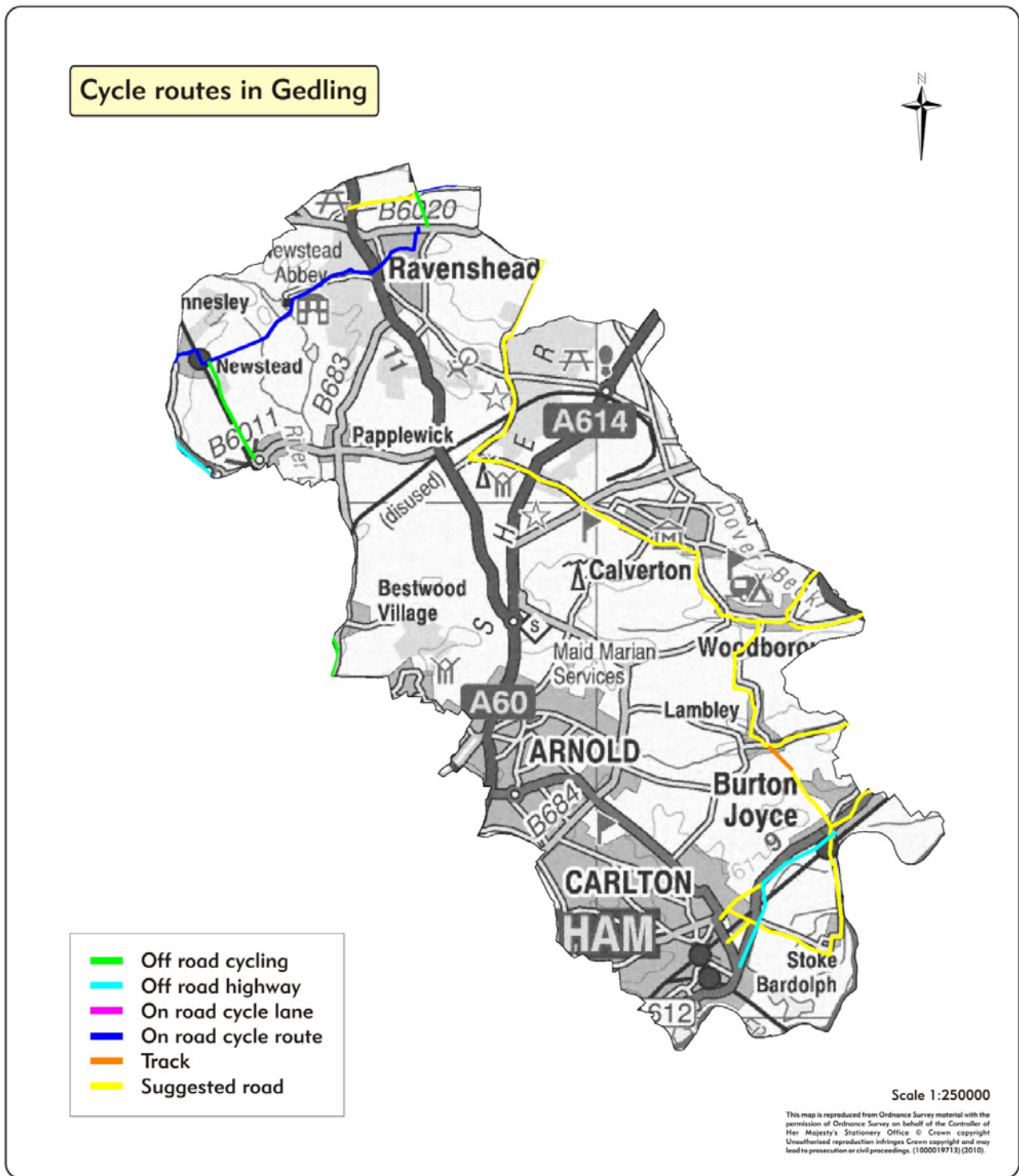


Figure 139: Cycling routes in Gedling district

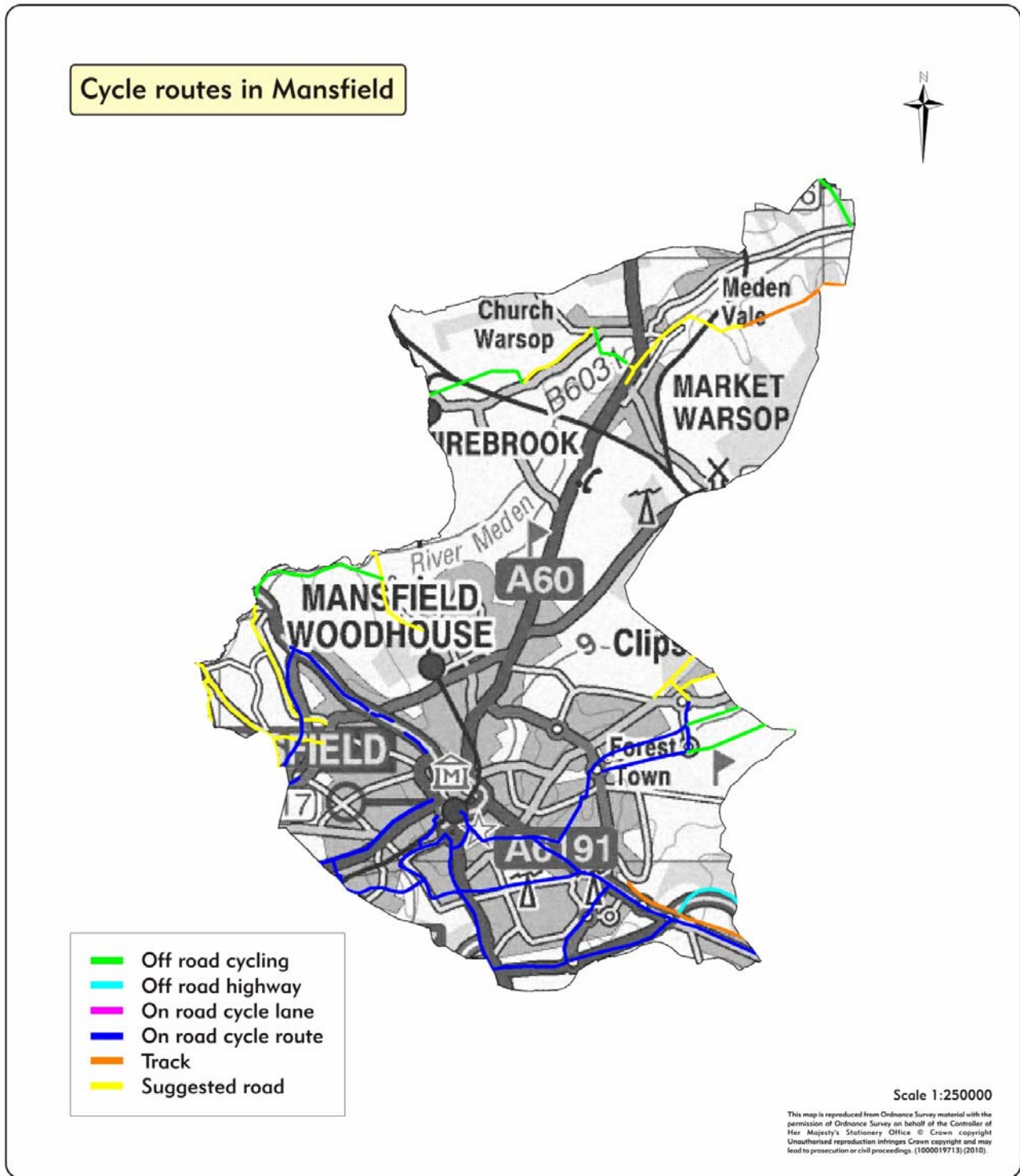


Figure 140: Cycling routes in Mansfield district

Cycle routes in Newark & Sherwood

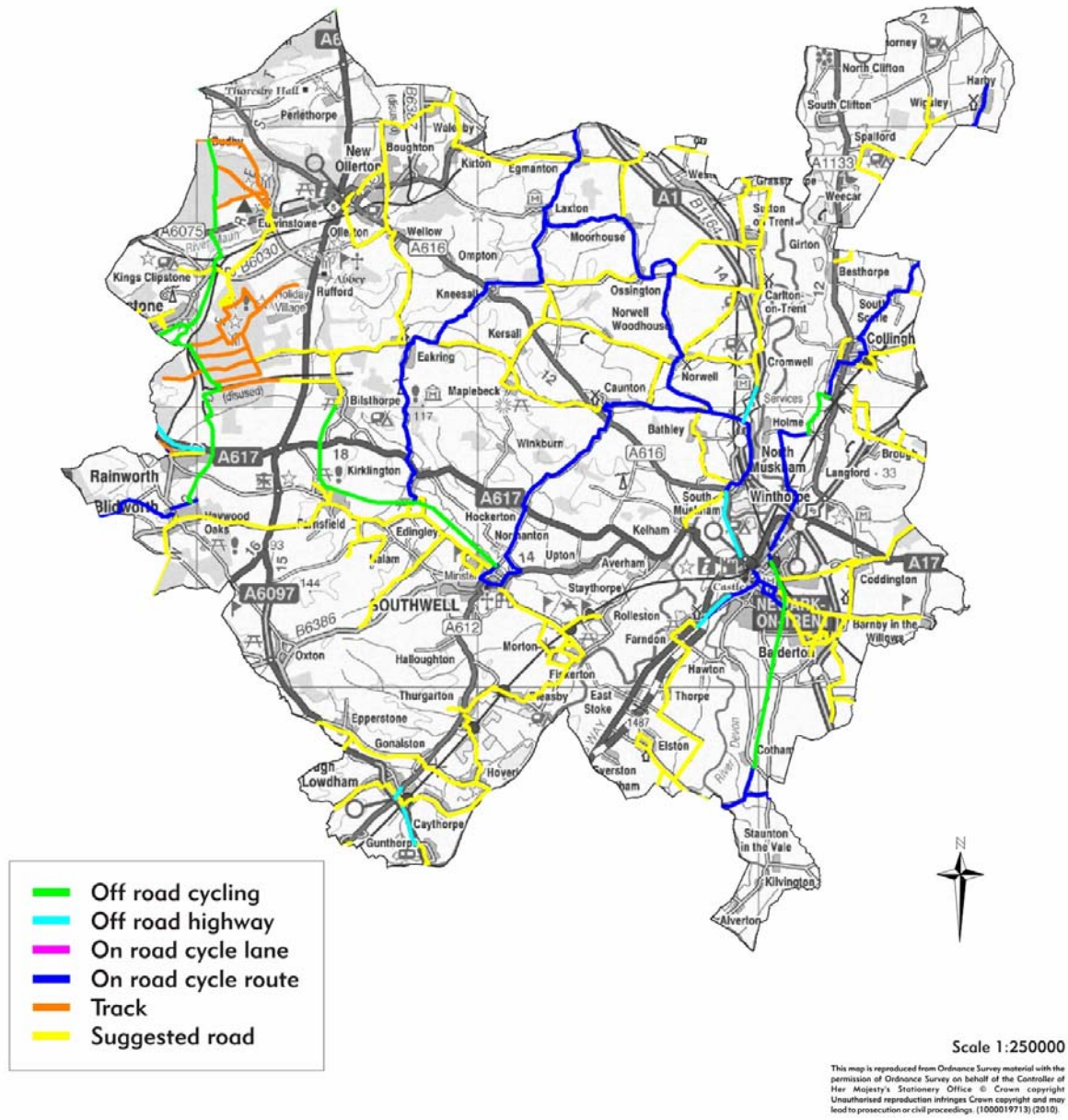


Figure 141: Cycling routes in Newark & Sherwood district

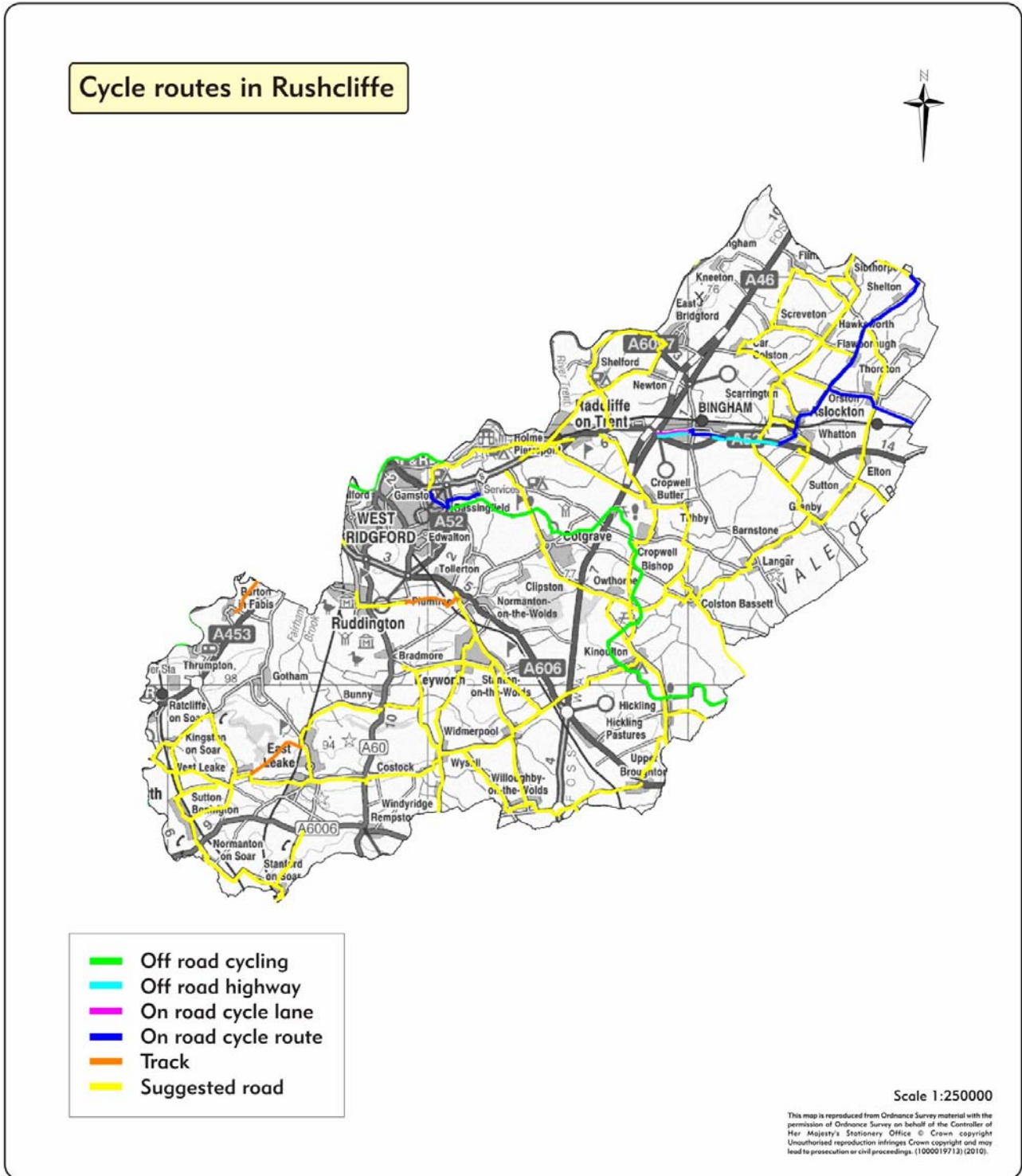


Figure 142: Cycling routes in Rushcliffe district

13.2 Cycling levels

13.2.1 Levels of cycling in each district

Table 98 and figure 143 below show the changes in cycling levels when compared to 2005 levels. Poor summer weather in 2008 and 2009 has impacted on cycling levels in Nottinghamshire and cycling levels across the whole county in 2009 have decreased slightly when compared to 2005 levels. Some districts have seen significant fluctuations in the levels of cycling during the period 2005 to 2009 but cycling levels have increased in the south of the county, whilst (with the exception of Ashfield) cycling levels have decreased in the north of the county.

Nottinghamshire Local Transport Plan Evidence Base Report

Table 98: Changes in cycling levels when compared to 2005

Area	Changes in levels of cycling when compared to 2005 levels			
	2006	2007	2008	2009
Ashfield	-9%	-7%	0%	+6%
Bassetlaw	+1%	0%	-5%	-9%
Broxtowe	+5%	+5%	+2%	+5%
Gedling	-3%	-12%	+6%	+21%
Mansfield	+4%	-3%	-6%	-5%
Newark & Sherwood	-7%	-2%	-13%	-17%
Rushcliffe	+1%	+8%	+4%	+12%
Nottinghamshire	0%	+2%	-3%	-2%

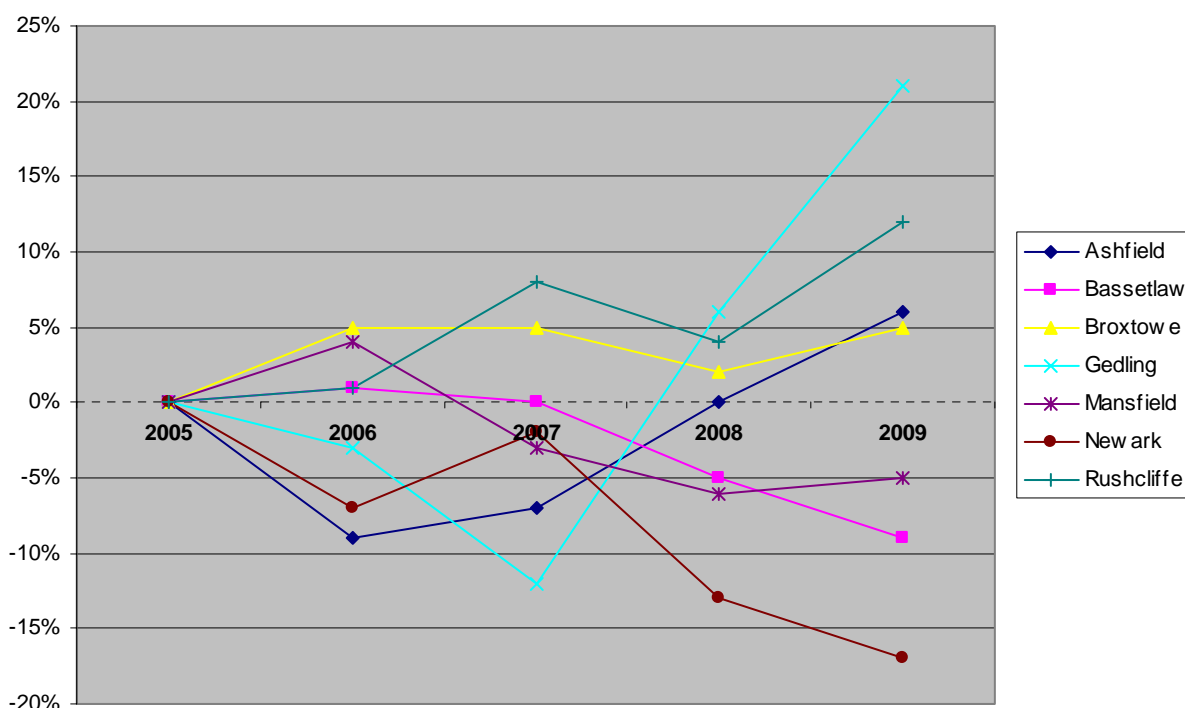


Figure 143: Changes in cycling levels when compared to 2005 levels

13.2.2 Rural and urban changes in cycling levels

When comparing 2009 with 2005, cycling levels in rural areas of Nottinghamshire have increased by 11%, whereas cycling levels in urban areas has decreased by 5%. Cycling levels in rural areas includes counts on leisure routes. Table 99 below shows the changes in cycling levels up to 2009 when compared with 2005 levels.

Table 99: Changes in cycling levels in rural and urban areas compared to 2005 levels

	Changes in cycling levels compared to 2005 levels			
	2006	2007	2008	2009
Urban	-1%	0%	-6%	-6%
Rural	5%	10%	11%	11%

Source: Nottinghamshire County Council