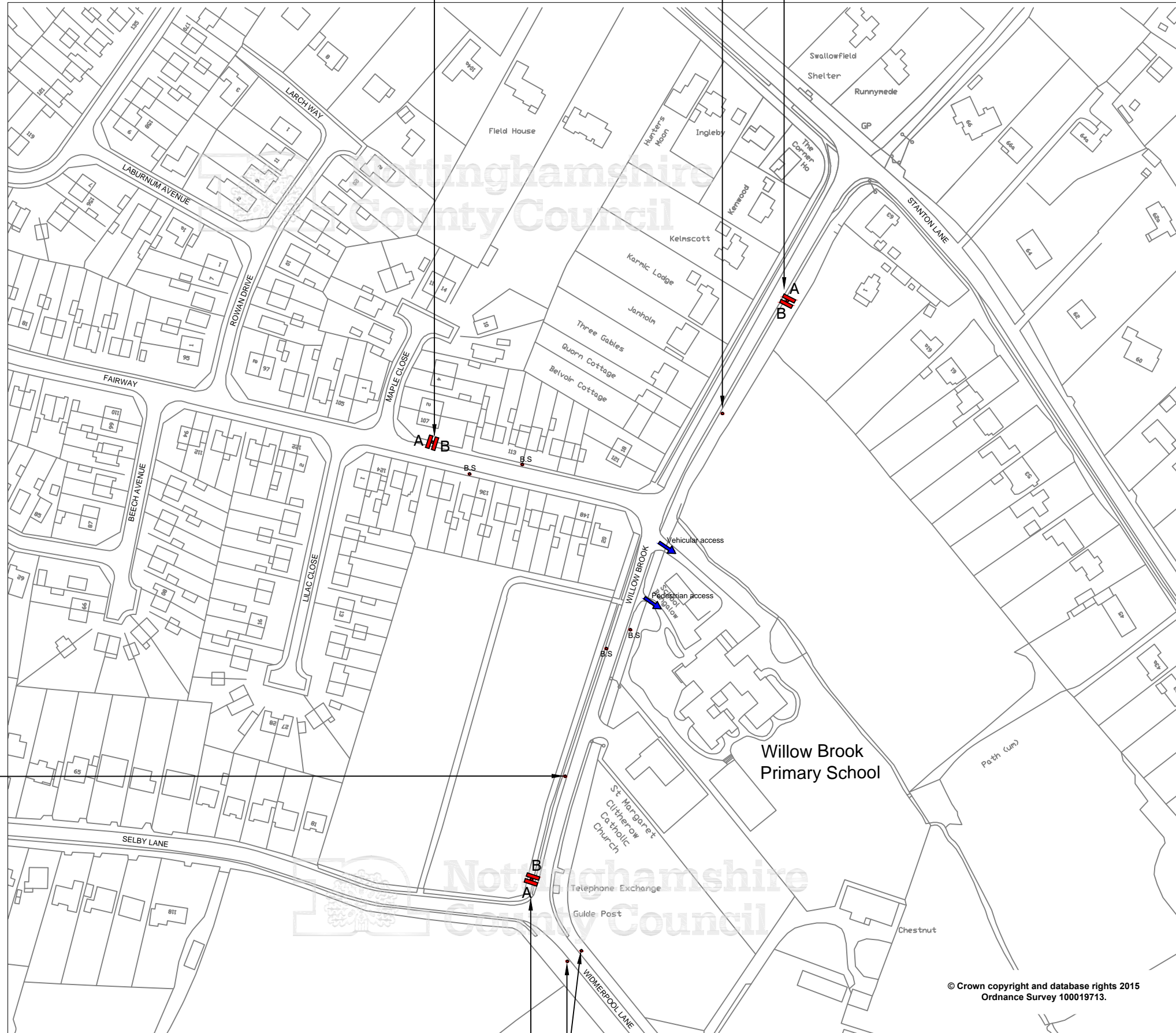


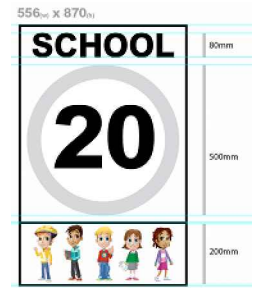
Proposed signs mounted back to back on 1 no 76mm post, 2.3m mounting height. Post to be installed to rear of footway.

Existing school sign to be retained

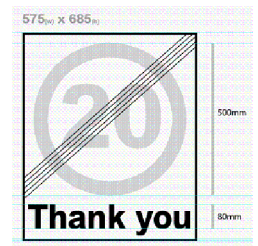
Proposed signs mounted back to back on 1 no 76mm post, 2.3m mounting height. Post to be installed to front of verge.



Sign ref A



Sign ref B



➔ Entrance to School

B.S. Existing bus stop to be retained

Existing school sign to be retained

Proposed signs mounted back to back on 1 no 76mm post, 2.3m mounting height. Post to be installed to front of verge.

Existing 30mph/40mph signs to be retained

Rev Status	Description	Drawn	Chkd	Auth	Date
Project <b>20mph School Speed Limit</b>					
Property No.		Project No.			
Title <b>Willow Brook Primary School, Keyworth</b>					
Scale	Drawn	H.J.	Date		19/10/15
1:2000@A3	Chkd	A.S.	Date		18.12.15
	Auth	A.S.	Traced	K.H.	
Drawing No.					Rev
<b>LR/P.H.IK.91415.02/292</b>					
 <b>Nottinghamshire County Council</b> Trent Bridge House, Fox Road, West Bridgford, Nottingham, NG2 6BJ Tel: 0300 500 80 80					
© Nottinghamshire County Council					

© Crown copyright and database rights 2015  
Ordnance Survey 100019713.

Dec 29, 2015 - 10:37am I:\Highways\Design and Construction\Roads and Highways\Projects\15-16\Capital\PH\K\91415.02 Countywide 20mph speed limit for School\Willow Brook Pri Sch.dwg