



## **Have your say**



**Consultation on setting up a  
new Council owned company  
to provide some adult social  
care services**



At a meeting on the 5<sup>th</sup> October it was agreed that we could ask people what they think about setting up a Council owned company to provide some social care services

The services that would be run by the new company are:



Church Street Residential Unit



Shared Lives



County Enterprise Foods



Day Services



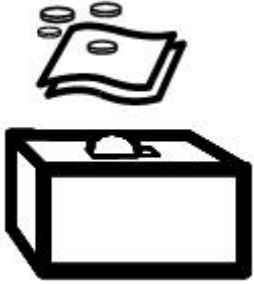
Short Breaks



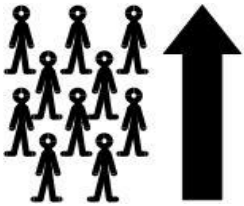
I-Work



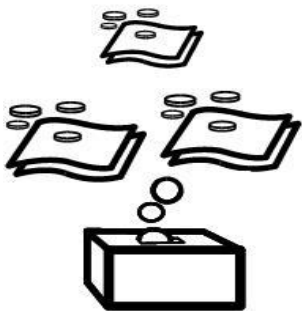
## Why are we thinking about doing this?



Even though we have made lots of savings over the last few years the County Council will still not have enough money to pay for all the services people want



Services have had to make big savings but at the same time more people are wanting to use these services



If services carry on being part of the Council it is likely that we will need them to save more money in the future



If we do not change the way we do things we will not be able to offer all the service we have at the moment and we will not be able to keep offering the same quality services



## What is a Council run company?



Being a Council owned company allows services to work in different ways but allows the Council to still have a big part in saying how services are provided



The new company would be owned by the Council.



Most of the work the new company does would be for the Council - 80% or more.





Some of the work the new company does can be for other customers – 20%



If the new company makes a profit it could be put back into the services or given back to the Council to spent on other services



The new company will manage and run the services day to day.



**Why do we think this is the best choice?**



The Council will carry on working closely with the new company and that will make it easier to make sure that good standards of care are maintained.



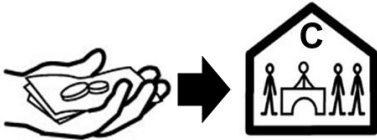
The new company will always have some care work to do for the Council



The new company can provide new services for new customers.



The new company can earn more money and this will help to keep services for the future



If the new company makes a profit it could be spent in the services or go into other Council services.



**What other ways of working are there?**



We have already thought about some other ways we could work and we could talk more about them if people want to.

The other ways of working are;





## 1. Set up a Social Enterprise company

A social enterprise is a company set up to provide services for the people it works for - this could include providing social care services for the Council.

This sort of company is usually owned by the people who work for it or by the people who use the services



A social enterprise company would not be owned by the Council.



The people who own the social enterprise are able to decide what to do with any profit it makes

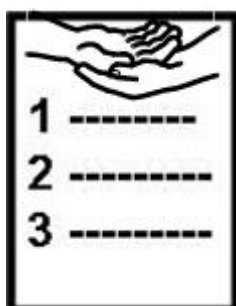


A social enterprise may have to bid for work along with other companies so they might not get work from the council



## 2. Ask a company outside the Council to provide these services

The Council could ask companies who already provide care services to provide its services for them.



The Council would have a contract with the company that says what services the Council wants them to provide.



The Council would not own the company so the new company would be able to decide how it wants to manage services and staff



The company would be privately owned or not-for-profit. If there was any profit the company would be able to decide what too with it



You can tell us what you think by;



- Filling out the questionnaire online at:

[www.nottinghamshire.gov.uk/socialcarecompany](http://www.nottinghamshire.gov.uk/socialcarecompany)



- Emailing your answers to:

[direct.services@nottscg.gov.uk](mailto:direct.services@nottscg.gov.uk)

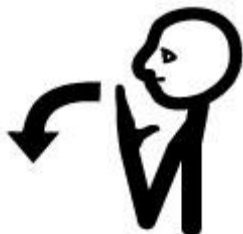


- There is an easy read survey with this newsletter which you can fill in and post free to:

FREEPOST RTCU-CTYJ-XXKA  
Projects and Programmes Team  
Nottinghamshire County Council  
County Hall  
Loughborough Road  
West Bridgford  
Nottingham, NG2 7QP

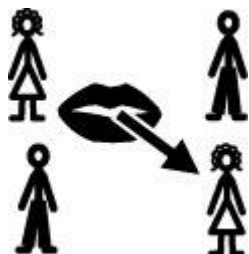


- Phoning the Customer Service Centre on  
0300 500 80 80



Thank your for answering the questions.

**You have until 31 January 2016 to tell us  
what you think**



**Questions lots of people ask**

We know that people will have a lot of questions. Some questions and answers are shown below.



**How will a council owned company be different?**



Although it is owned by the County Council it is a proper company in its own right.



Staff will be employed by the company and not the Council



The Council will still assess people to see if they are eligible for care and support services



But services will be run by the company and not the Council



**Will my service change?**

No decisions have been made yet. So for now nothing will change.



You will carry on getting your service at the same place and with the same staff



**Will the eligibility criteria for attending the services change?**



**No**, this idea does not affect the way that individuals are assessed to see if they are eligible to get care and support from the Council



A Council owned company would allow people to use their Direct Payments which would mean more people being able to use services



## What do you think?

Here is the survey you can fill out and post to us



### 1. Please tell us who you are

☐

Service user

☐

Carer for someone who uses the services

☐

Member of staff

☐

Other



**2. Which of the services below do you use, have someone you care for use or work at?**

☐

Church Street Residential Unit

☐

County Enterprise Foods, the Meals at Home Service

☐

Day Services



☐

i-Work

☐

Shared Lives

☐

Short Breaks

☐

None of the above



**3. Do you agree with the idea to have a Council owned company providing some services?**

☐

Agree

☐

Disagree

☐

Don't know



**Do you think any of the other ideas are better?**



**4. Set up a Social Enterprise company**

☐

Yes

☐

No

☐

Don't know



**5. Ask a company that already offers social care services**

☐

Yes

☐

No

☐

Don't know



**6. What else would you like to say about a Council owned company?**



## What things mean

**Company** – An organisation or business that provides services

**Council owned company** – A company that is not part of the Council but the Council have a big say about how they provide services

**Profit** – this is the extra money left over when all the bills for running a service have been paid.

**Eligibility** – A decision made about whether you can have care and support from the Council. A social care assessment is done to decide this.

**Bid** – When the Council wants a company to provide services they ask a number different ones to say how they will provide the service and what it will cost. The council then picks one that offers the best value for money and offers good quality

**Direct Payment** – This is where people get money paid to them from the council to meet their assessed care and support needs

**Not For Profit** – A company that does not make a profit for the owners but uses any extra money it makes to maintain or improve its services