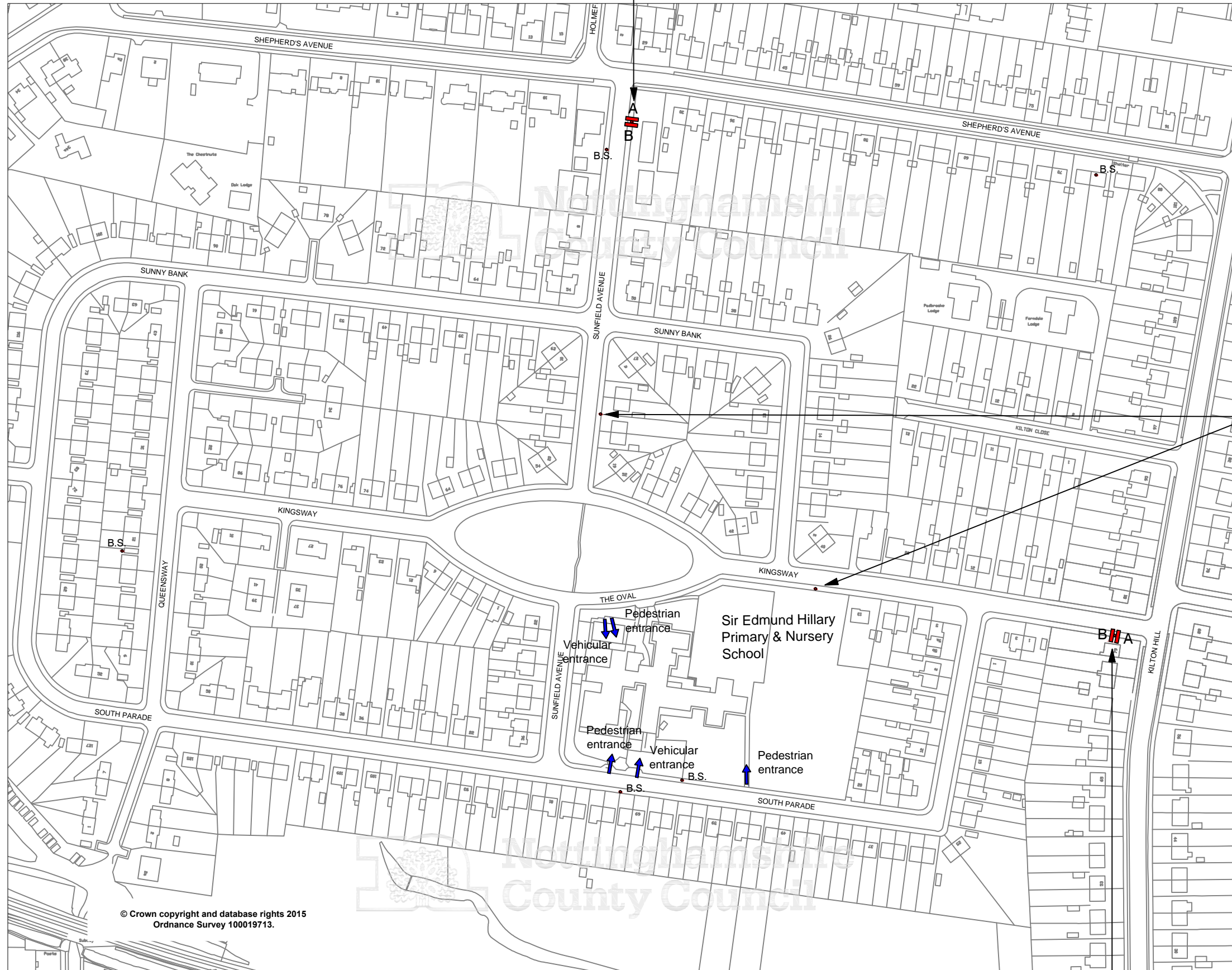
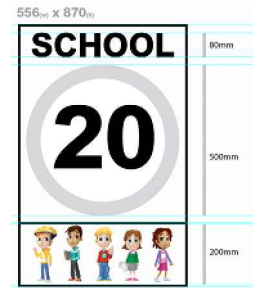




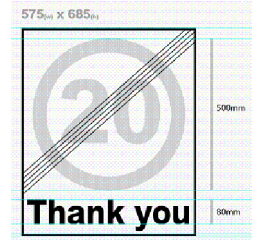
Proposed signs mounted back to back on 1 no 76mm post, 2.3m mounting height. Post to be installed to rear of footway.



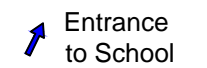
Sign ref A



Sign ref B



Existing school zone sign to be retained



B.S. Existing bus stop to be retained

| Rev Status | Description | Drawn | Ch'kd | Auth | Date |
|--------------------|--|-------|--------|------|------------------|
| Project | 20mph School Speed Limit | | | | |
| Property No. | Project No. | | | | |
| Title | Sir Edmund Hillary Primary & Nursery School Worksop | | | | |
| Scale 1:2000@A3 | Drawn | H.J. | | | Date 16/6/15 |
| | Ch'kd | S.M. | | | Date 01/09/15 |
| | Auth | S.M. | Traced | | |
| Drawing No. | LR/P.H.IK.91415.02/233 | | | | Rev |



Trent Bridge House, Fox Road,
West Bridgford, Nottingham, NG2 6BJ
Tel: 0300 500 80 80

Proposed signs mounted back to back on 1 no 76mm post, 2.3m mounting height. Post to be installed to rear of footway.