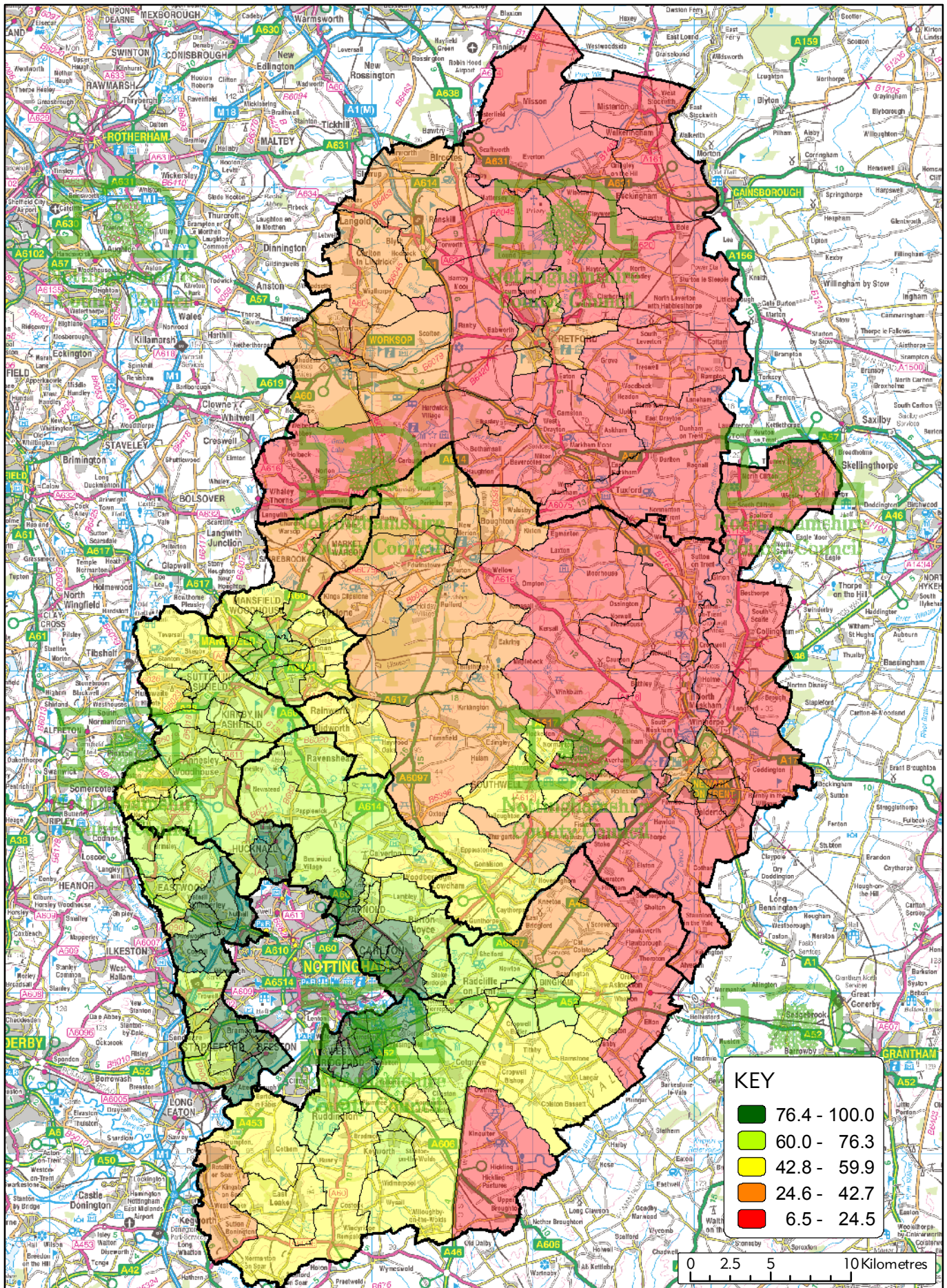


## Map G1 : Accessibility Distance



This map is reproduced from Ordnance Survey material with the permission of Ordnance Survey on behalf of the Controller of Her Majesty's Stationery Office (c) Crown Copyright. Unauthorised reproduction infringes Crown Copyright and may lead to prosecution or civil proceedings. Nottinghamshire County Council OS Licence No. 100019713, 2008



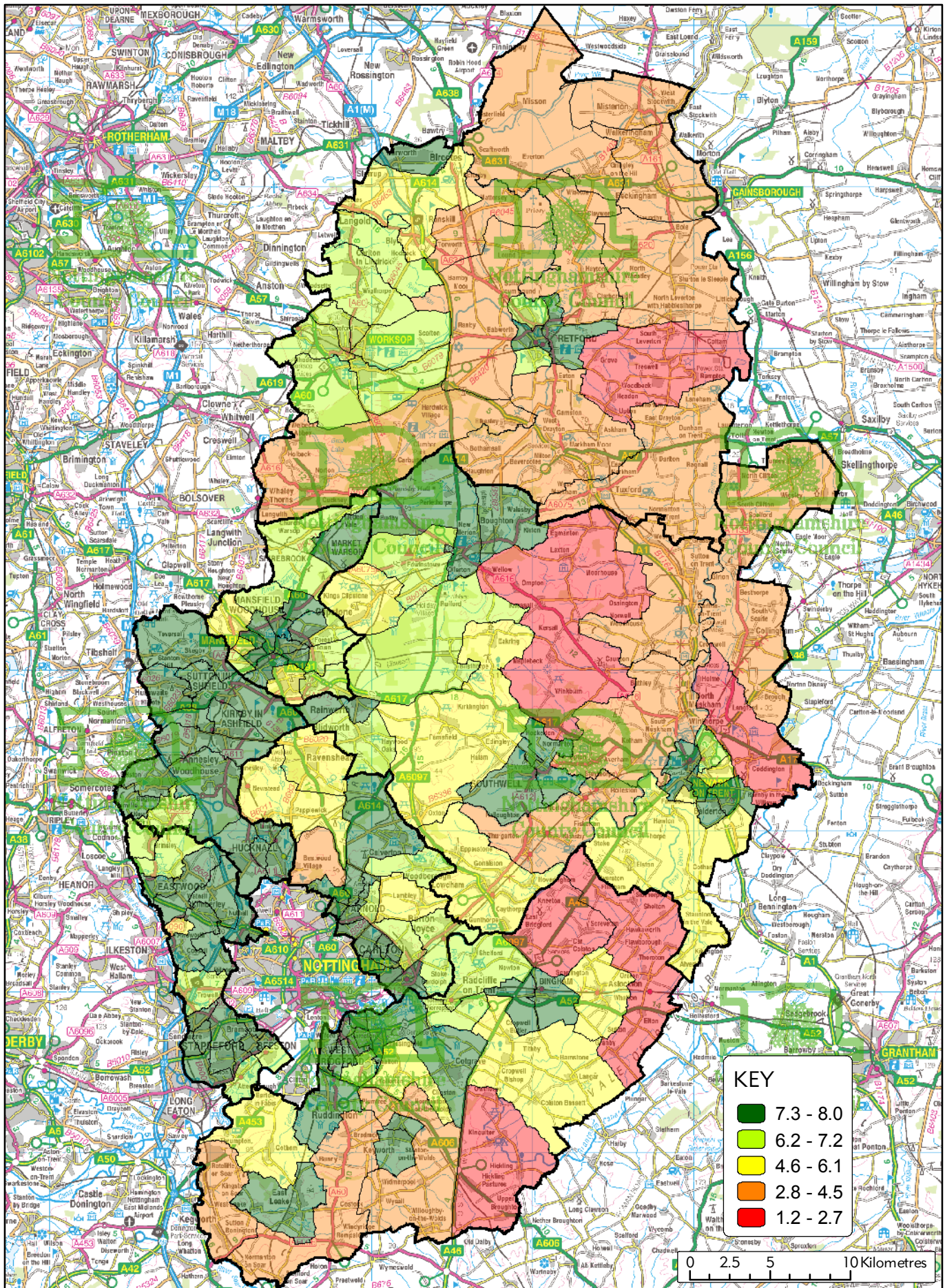


## Map G2 : Accessibility Index



This map is reproduced from Ordnance Survey material with the permission of Ordnance Survey on behalf of the Controller of Her Majesty's Stationery Office (c) Crown Copyright. Unauthorised reproduction infringes Crown Copyright and may lead to prosecution or civil proceedings. Nottinghamshire County Council OS Licence No. 100019713, 2008





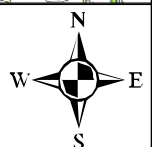
**KEY**

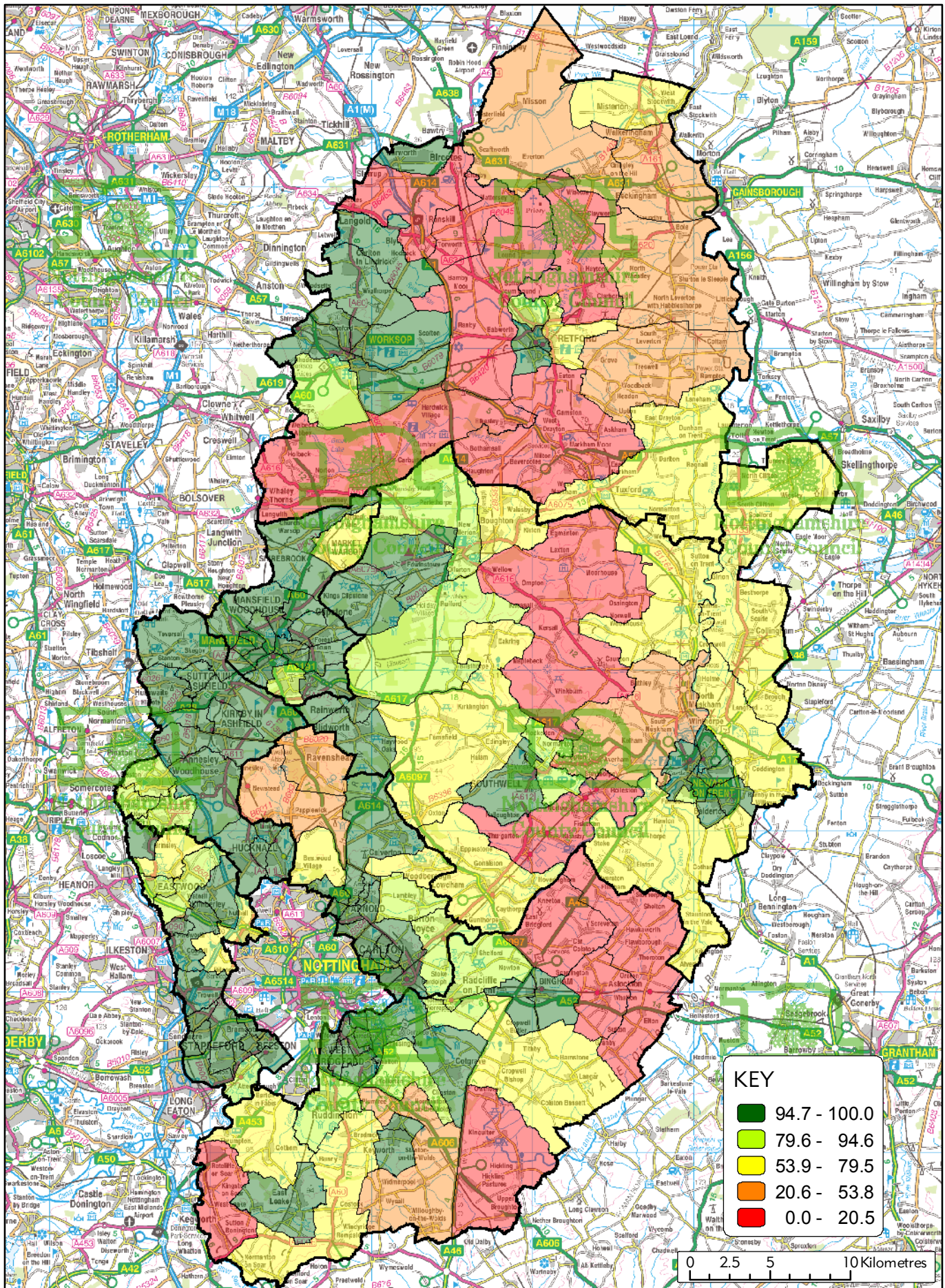
Dark Green	7.3 - 8.0
Light Green	6.2 - 7.2
Yellow	4.6 - 6.1
Orange	2.8 - 4.5
Red	1.2 - 2.7

## Map G3 : Accessibility Score



This map is reproduced from Ordnance Survey material with the permission of Ordnance Survey on behalf of the Controller of Her Majesty's Stationery Office (c) Crown Copyright. Unauthorised reproduction infringes Crown Copyright and may lead to prosecution or civil proceedings. Nottinghamshire County Council OS Licence No. 100019713, 2008





**KEY**

94.7 - 100.0
79.6 - 94.6
53.9 - 79.5
20.6 - 53.8
0.0 - 20.5

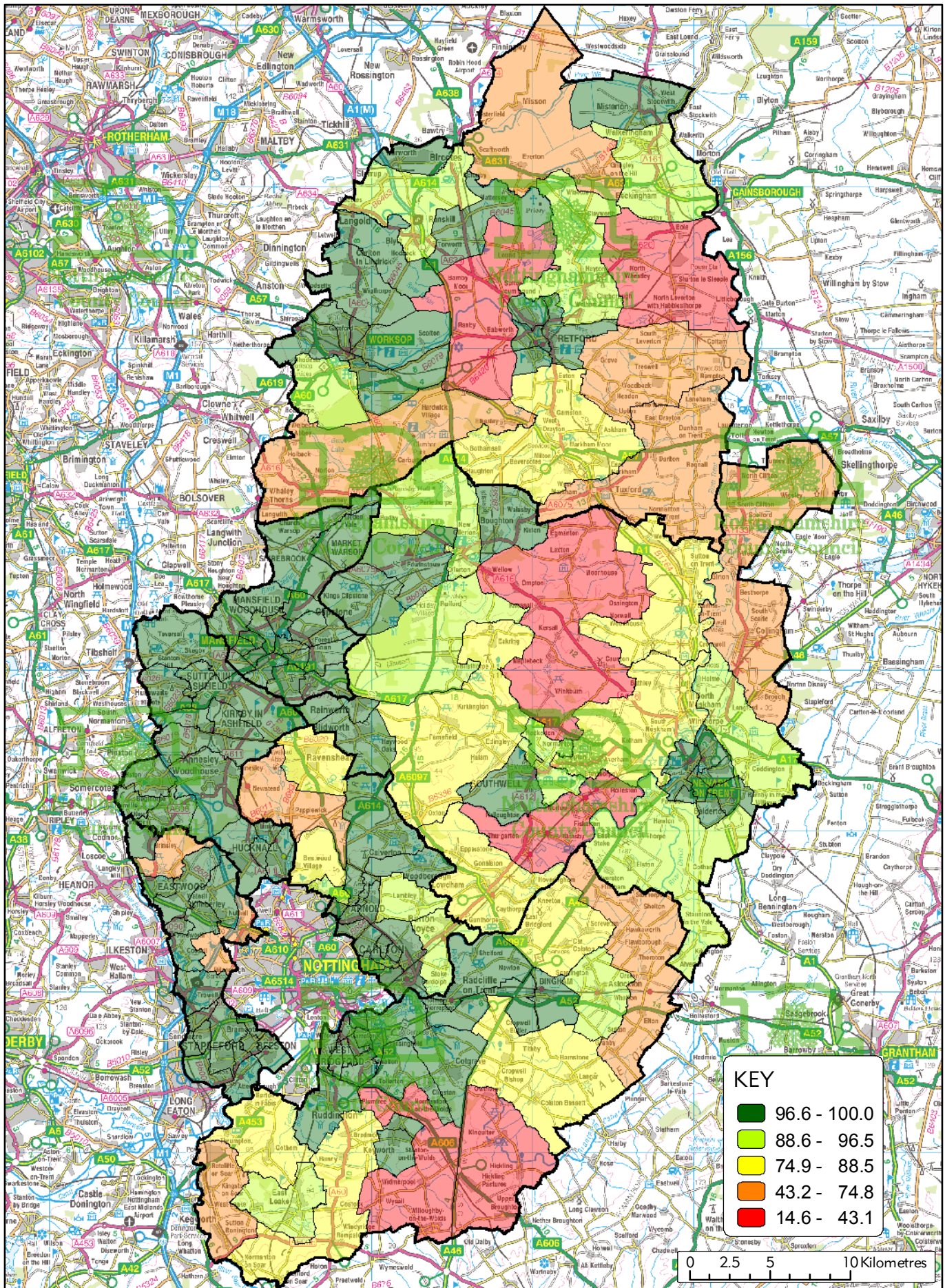
0 2.5 5 10 Kilometres



### Map G4 : Bus Frequency 30 mins



This map is reproduced from Ordnance Survey material with the permission of Ordnance Survey on behalf of the Controller of Her Majesty's Stationery Office (c) Crown Copyright. Unauthorised reproduction infringes Crown Copyright and may lead to prosecution or civil proceedings. Nottinghamshire County Council OS Licence No. 100019713, 2008



**KEY**

96.6 - 100.0
88.6 - 96.5
74.9 - 88.5
43.2 - 74.8
14.6 - 43.1

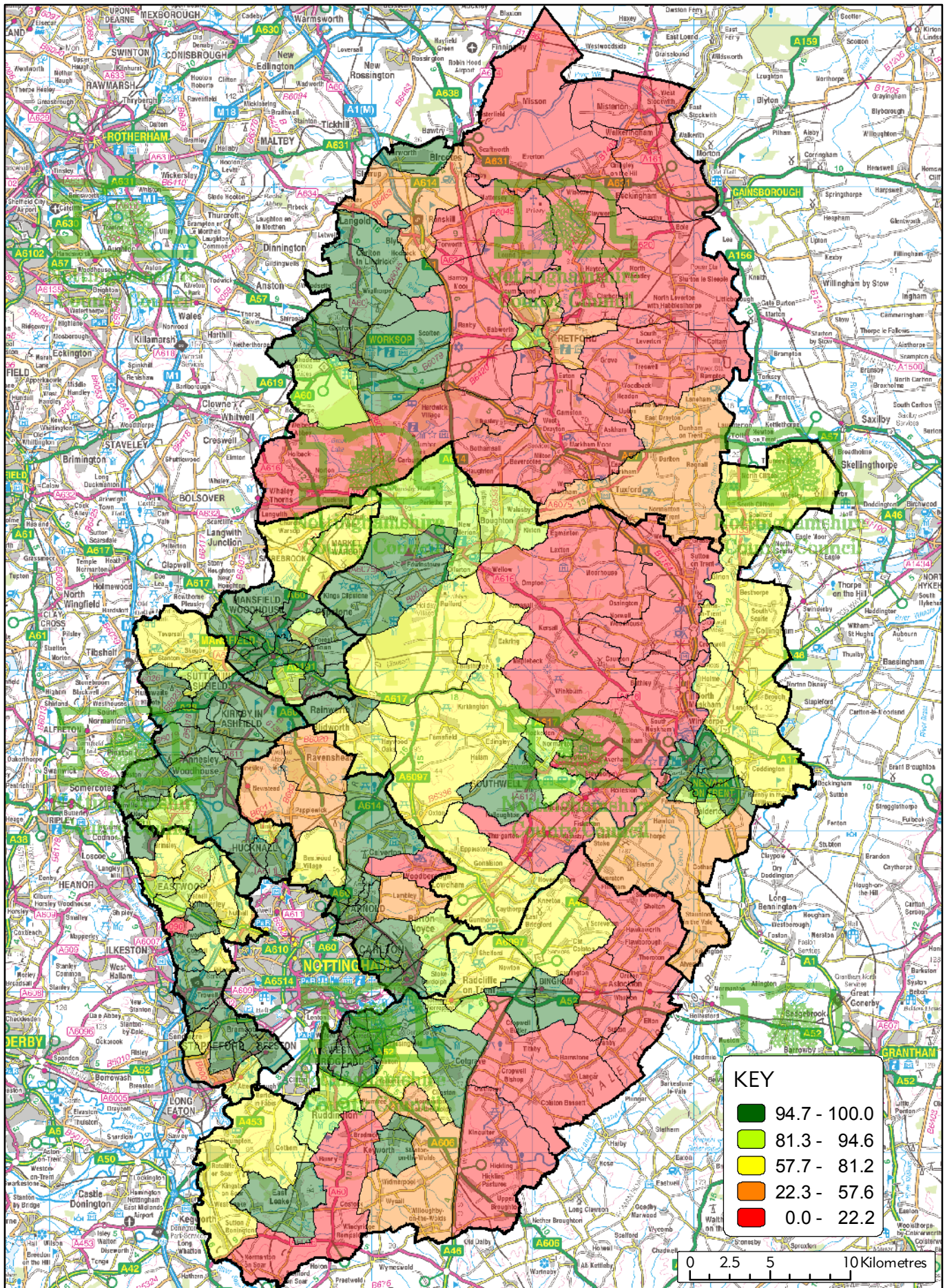
0 2.5 5 10 Kilometres



## Map G5 : Bus Frequency Hourly



This map is reproduced from Ordnance Survey material with the permission of Ordnance Survey on behalf of the Controller of Her Majesty's Stationery Office (c) Crown Copyright. Unauthorised reproduction infringes Crown Copyright and may lead to prosecution or civil proceedings. Nottinghamshire County Council OS Licence No. 100019713, 2008

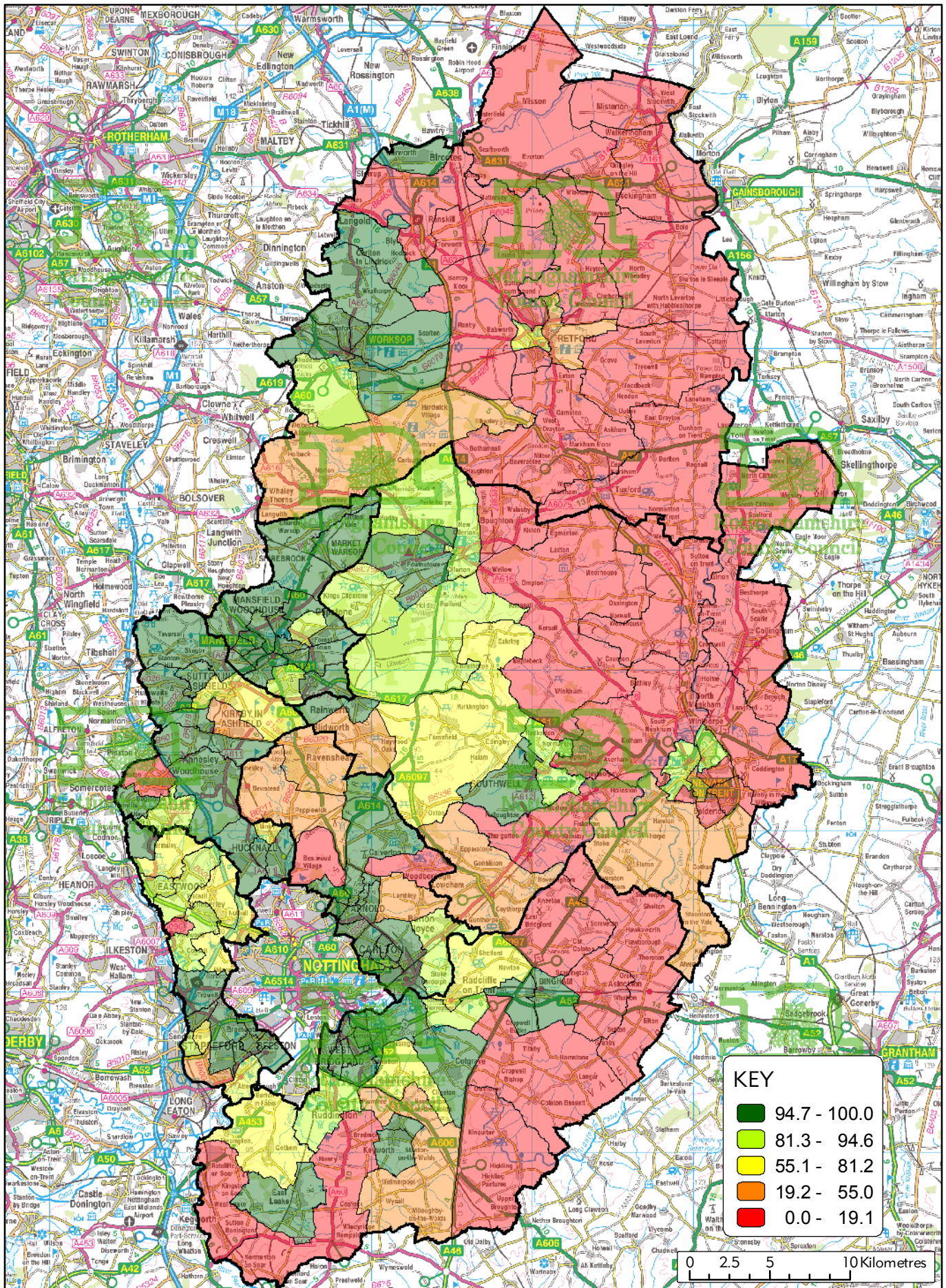


## Map G6 : Bus Frequency Hourly Evening



This map is reproduced from Ordnance Survey material with the permission of Ordnance Survey on behalf of the Controller of Her Majesty's Stationery Office (c) Crown Copyright. Unauthorised reproduction infringes Crown Copyright and may lead to prosecution or civil proceedings. Nottinghamshire County Council OS Licence No. 100019713, 2008





## Map G7 : Bus Frequency Hourly Sunday



This map is reproduced from Ordnance Survey material with the permission of Ordnance Survey on behalf of the Controller of Her Majesty's Stationery Office (c) Crown Copyright. Unauthorised reproduction infringes Crown Copyright and may lead to prosecution or civil proceedings. Nottinghamshire County Council OS Licence No. 100019713, 2008

