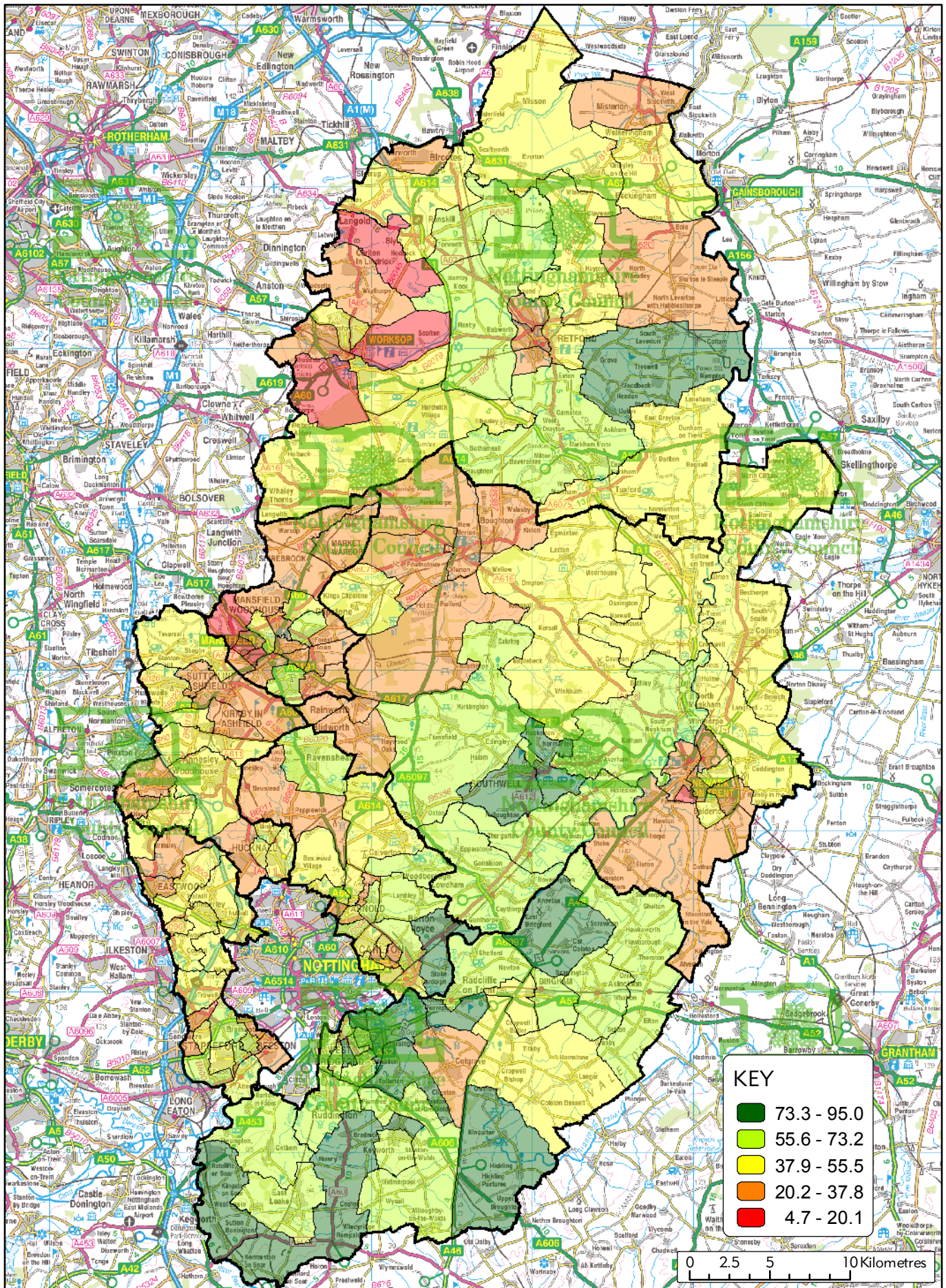


Map D7 : Key Stage 3 Science



This map is reproduced from Ordnance Survey material with the permission of Ordnance Survey on behalf of the Controller of Her Majesty's Stationery Office (c) Crown Copyright. Unauthorised reproduction infringes Crown Copyright and may lead to prosecution or civil proceedings. Nottinghamshire County Council OS Licence No. 100019713, 2008





KEY

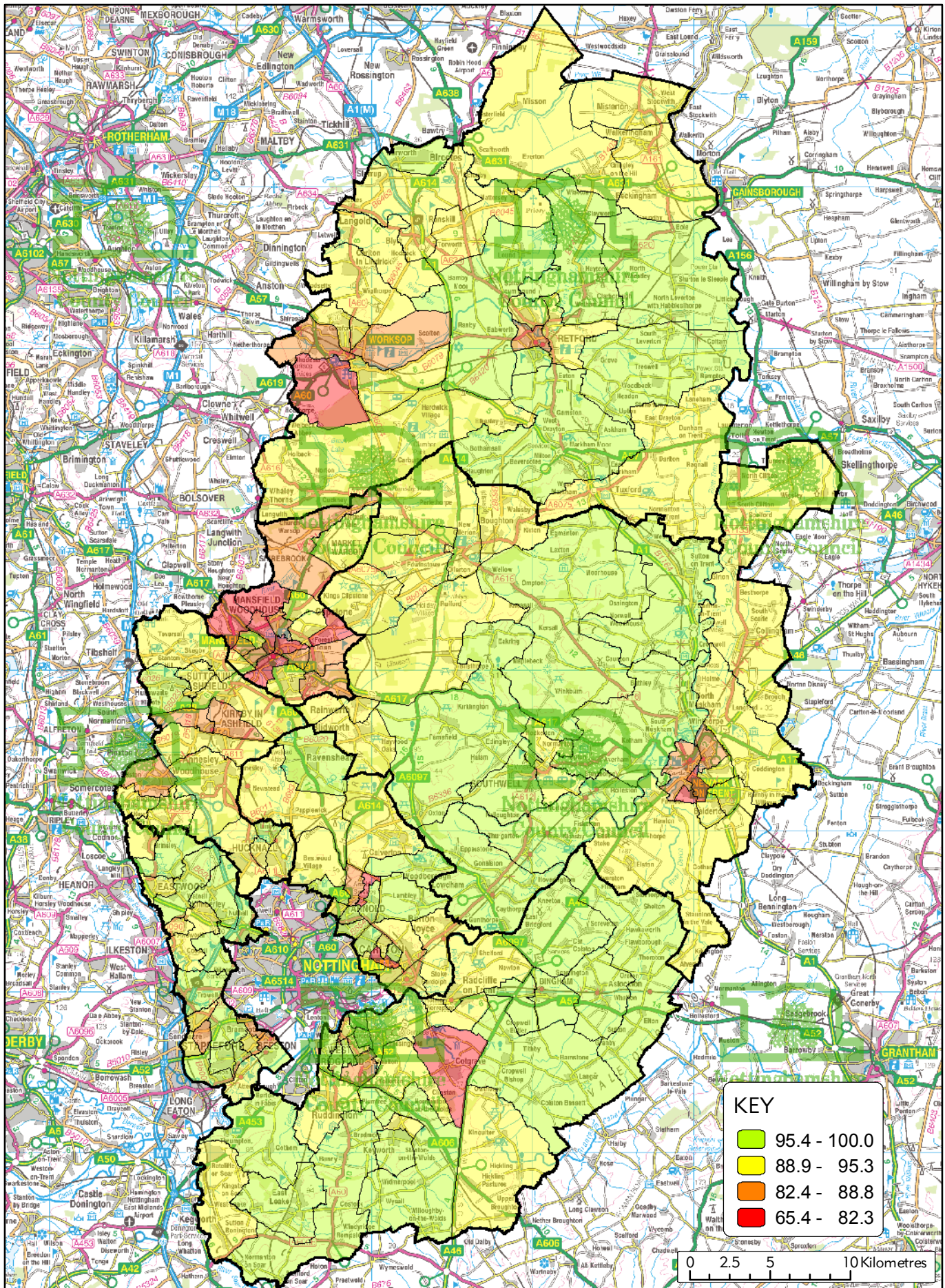
73.3 - 95.0
55.6 - 73.2
37.9 - 55.5
20.2 - 37.8
4.7 - 20.1



Map D8 : Key Stage 4 5+ A*-C Grade GCSEs

This map is reproduced from Ordnance Survey material with the permission of Ordnance Survey on behalf of the Controller of Her Majesty's Stationery Office (c) Crown Copyright. Unauthorised reproduction infringes Crown Copyright and may lead to prosecution or civil proceedings. Nottinghamshire County Council OS Licence No. 100019713, 2008



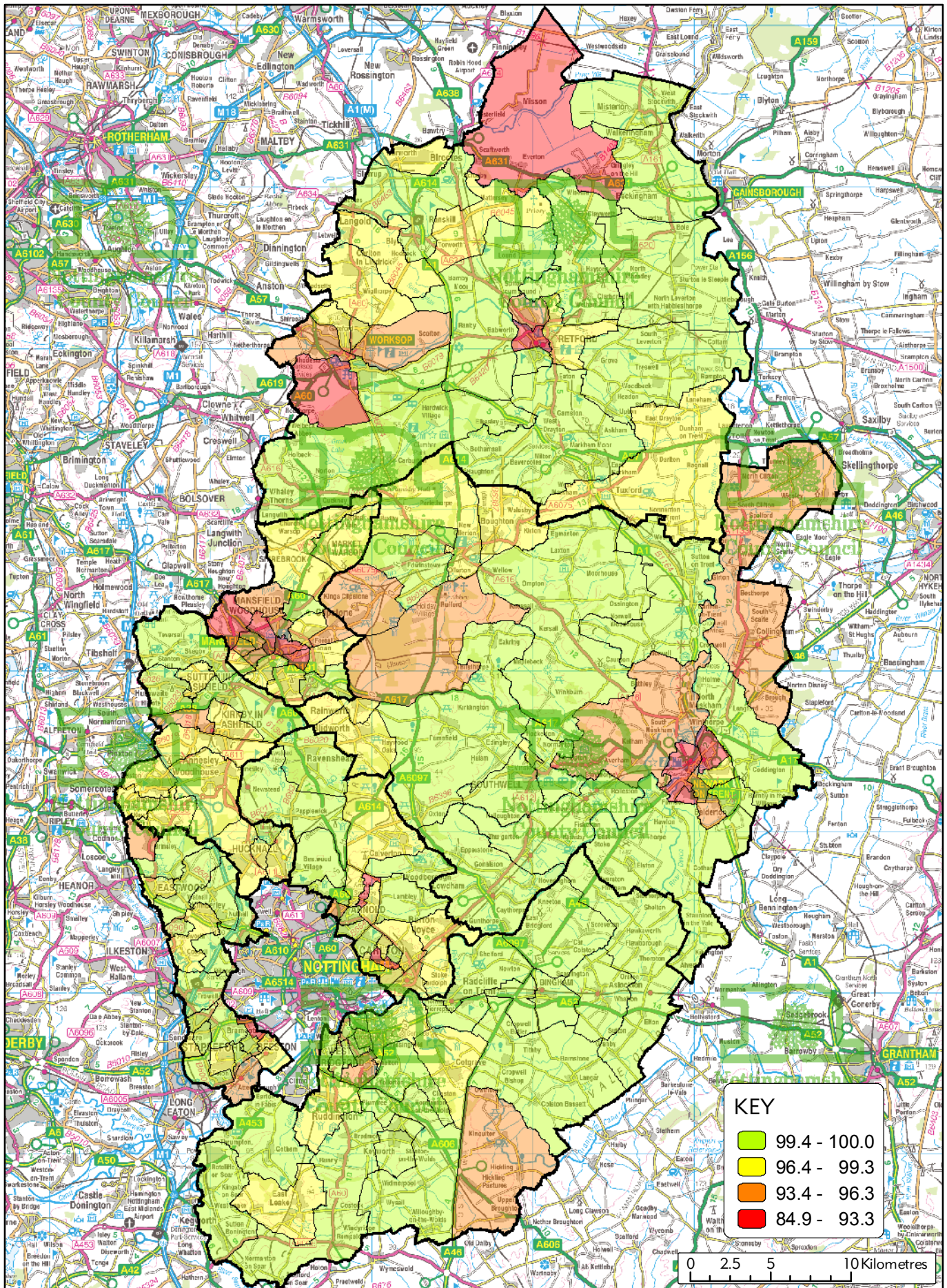


Map D9 : Key Stage 4 5+ A*-G Grade GCSEs



This map is reproduced from Ordnance Survey material with the permission of Ordnance Survey on behalf of the Controller of Her Majesty's Stationery Office (c) Crown Copyright. Unauthorised reproduction infringes Crown Copyright and may lead to prosecution or civil proceedings. Nottinghamshire County Council OS Licence No. 100019713, 2008





KEY	
■	99.4 - 100.0
■	96.4 - 99.3
■	93.4 - 96.3
■	84.9 - 93.3

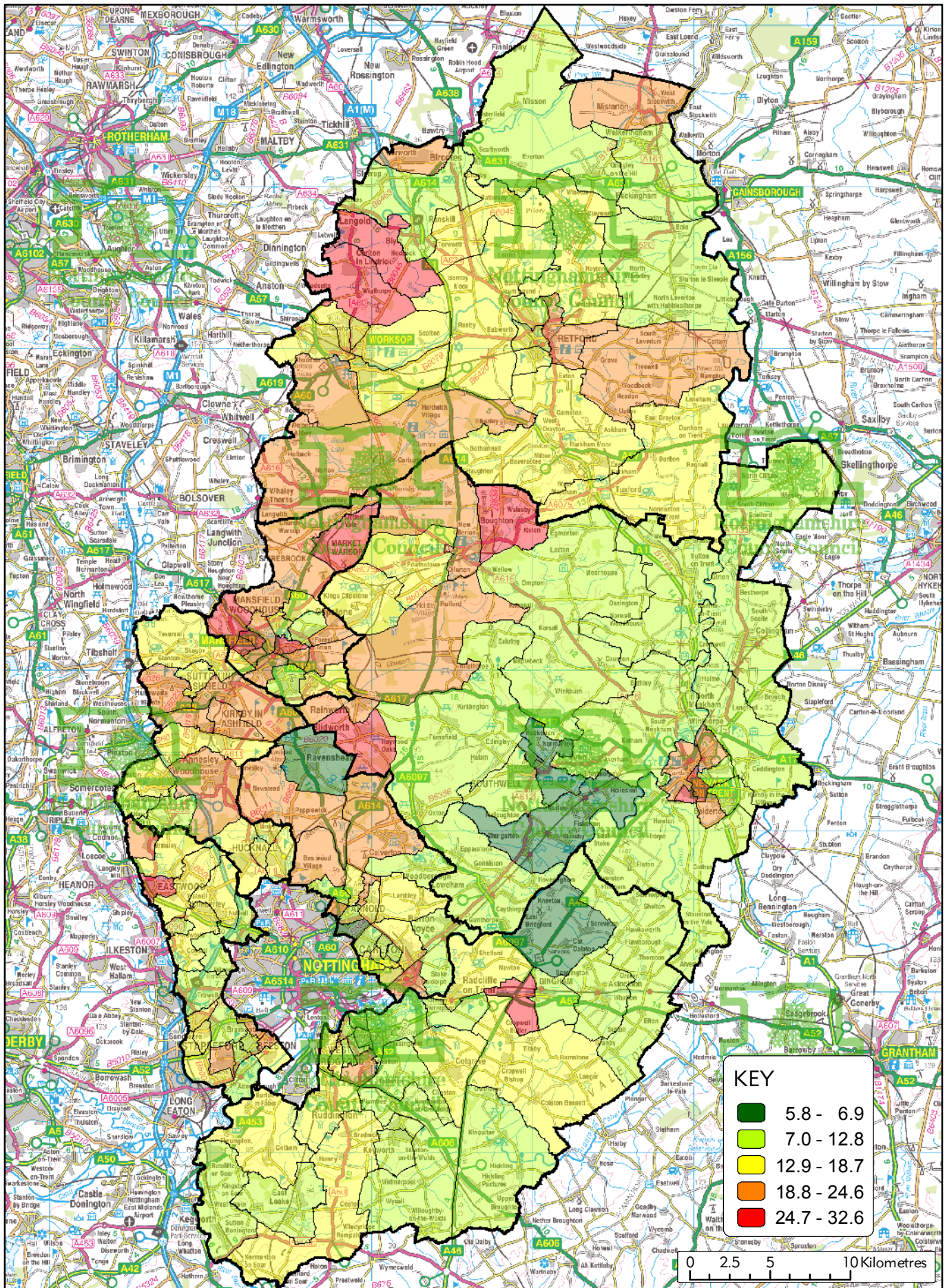
0 2.5 5 10 Kilometres



Map D10 : Key Stage 4 1+ Entry Level Qualifications



This map is reproduced from Ordnance Survey material with the permission of Ordnance Survey on behalf of the Controller of Her Majesty's Stationery Office (c) Crown Copyright. Unauthorised reproduction infringes Crown Copyright and may lead to prosecution or civil proceedings. Nottinghamshire County Council OS Licence No. 100019713, 2008



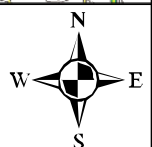
KEY	
■	5.8 - 6.9
■	7.0 - 12.8
■	12.9 - 18.7
■	18.8 - 24.6
■	24.7 - 32.6

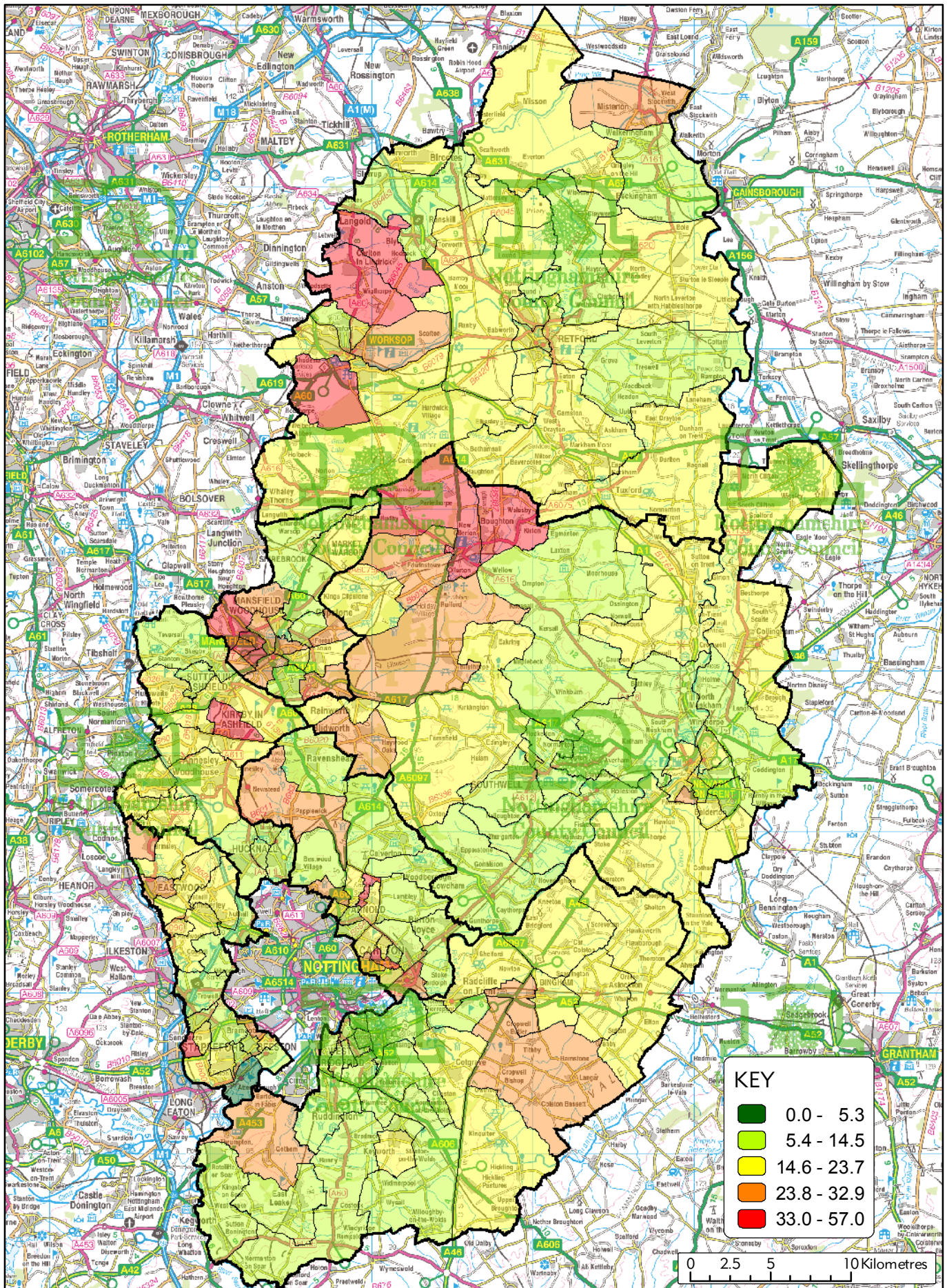


Map D11 : Special Educational Needs - Primary

Nottinghamshire
County Council

This map is reproduced from Ordnance Survey material with the permission of Ordnance Survey on behalf of the Controller of Her Majesty's Stationery Office (c) Crown Copyright. Unauthorised reproduction infringes Crown Copyright and may lead to prosecution or civil proceedings. Nottinghamshire County Council OS Licence No. 100019713, 2008





KEY	
■	0.0 - 5.3
■	5.4 - 14.5
■	14.6 - 23.7
■	23.8 - 32.9
■	33.0 - 57.0

0 2.5 5 10 Kilometres



Map D12 : Special Educational Needs - Secondary



This map is reproduced from Ordnance Survey material with the permission of Ordnance Survey on behalf of the Controller of Her Majesty's Stationery Office (c) Crown Copyright. Unauthorised reproduction infringes Crown Copyright and may lead to prosecution or civil proceedings. Nottinghamshire County Council OS Licence No. 100019713, 2008