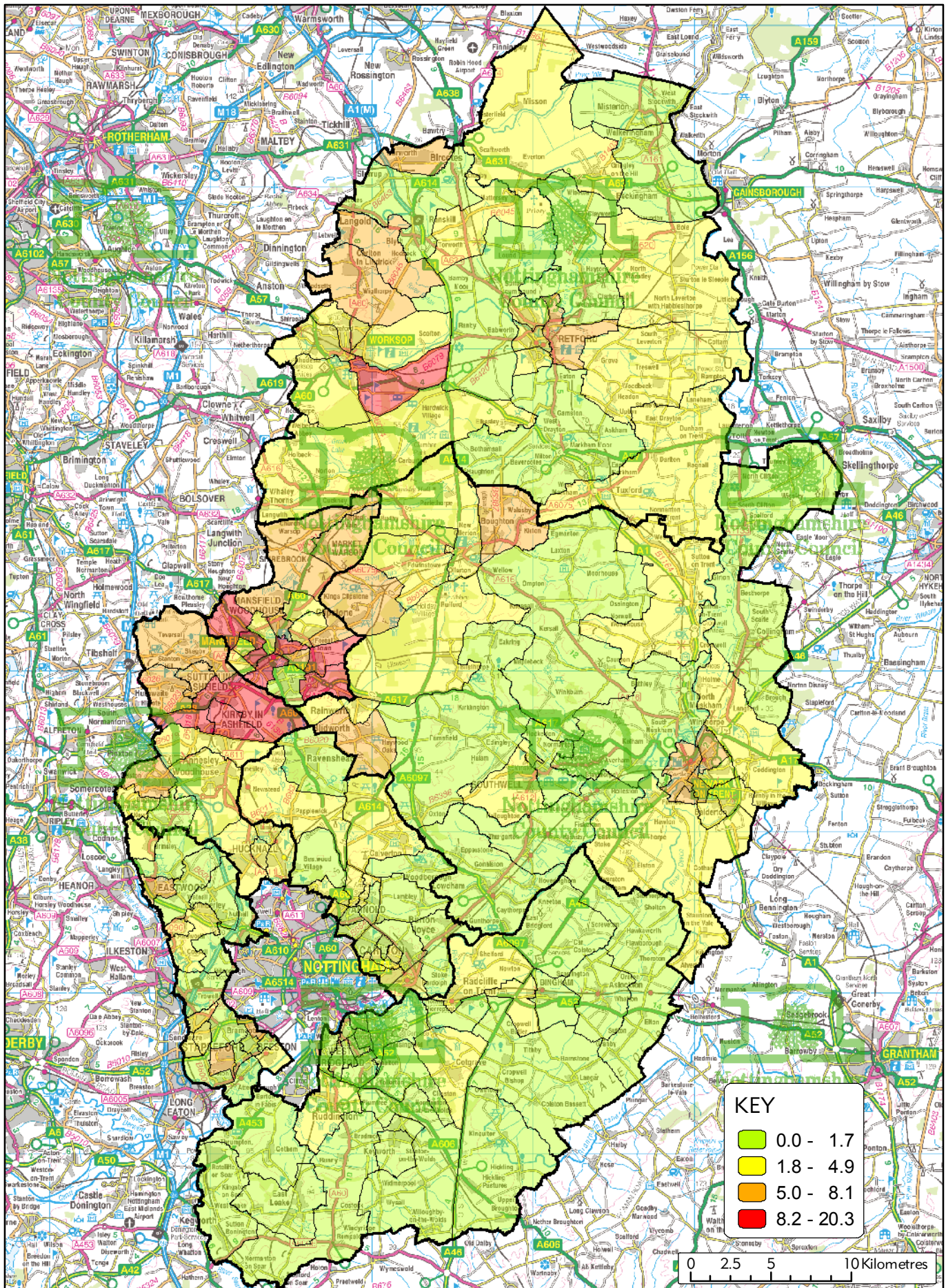


Map E1 : Access to Hospital

This map is reproduced from Ordnance Survey material with the permission of Ordnance Survey on behalf of the Controller of Her Majesty's Stationery Office (c) Crown Copyright. Unauthorised reproduction infringes Crown Copyright and may lead to prosecution or civil proceedings. Nottinghamshire County Council OS Licence No. 100019713, 2008





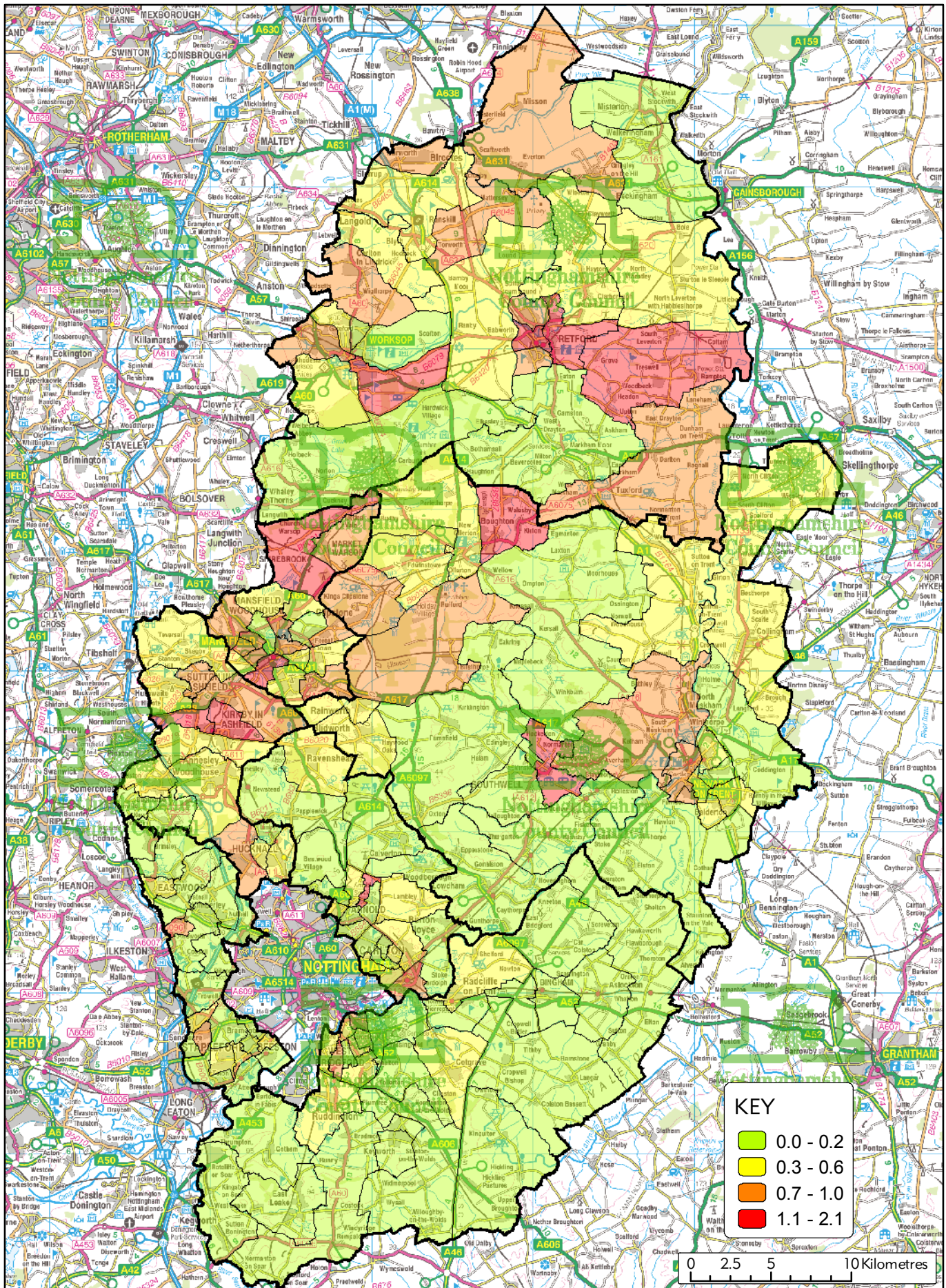
KEY	
■	0.0 - 1.7
■	1.8 - 4.9
■	5.0 - 8.1
■	8.2 - 20.3



Map E2 : Children in Need

This map is reproduced from Ordnance Survey material with the permission of Ordnance Survey on behalf of the Controller of Her Majesty's Stationery Office (c) Crown Copyright. Unauthorised reproduction infringes Crown Copyright and may lead to prosecution or civil proceedings. Nottinghamshire County Council OS Licence No. 100019713, 2008





KEY	
■	0.0 - 0.2
■	0.3 - 0.6
■	0.7 - 1.0
■	1.1 - 2.1

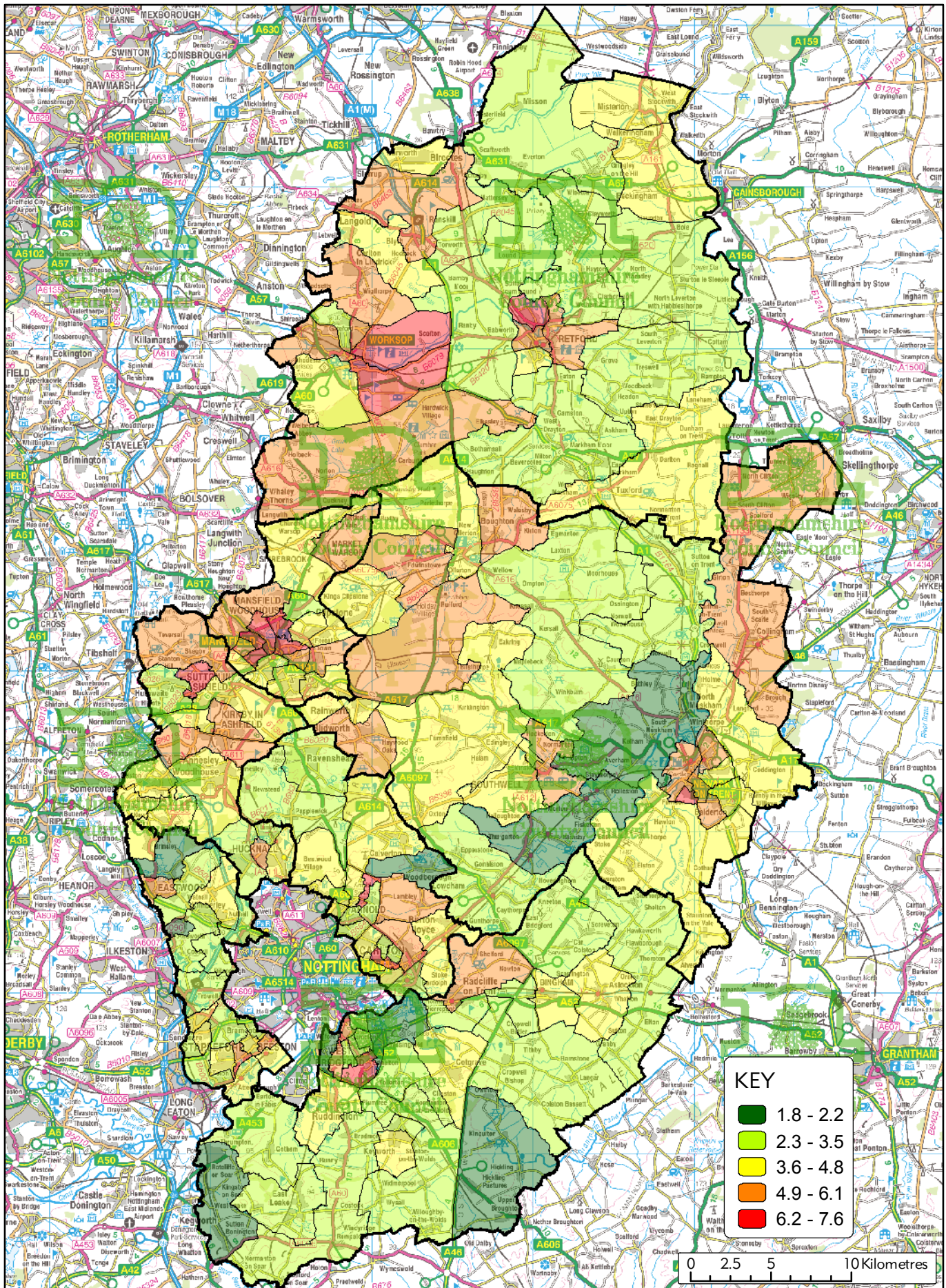
0 2.5 5 10 Kilometres



Map E3 : Child Protection



This map is reproduced from Ordnance Survey material with the permission of Ordnance Survey on behalf of the Controller of Her Majesty's Stationery Office (c) Crown Copyright. Unauthorised reproduction infringes Crown Copyright and may lead to prosecution or civil proceedings. Nottinghamshire County Council OS Licence No. 100019713, 2008



KEY

1.8 - 2.2
2.3 - 3.5
3.6 - 4.8
4.9 - 6.1
6.2 - 7.6

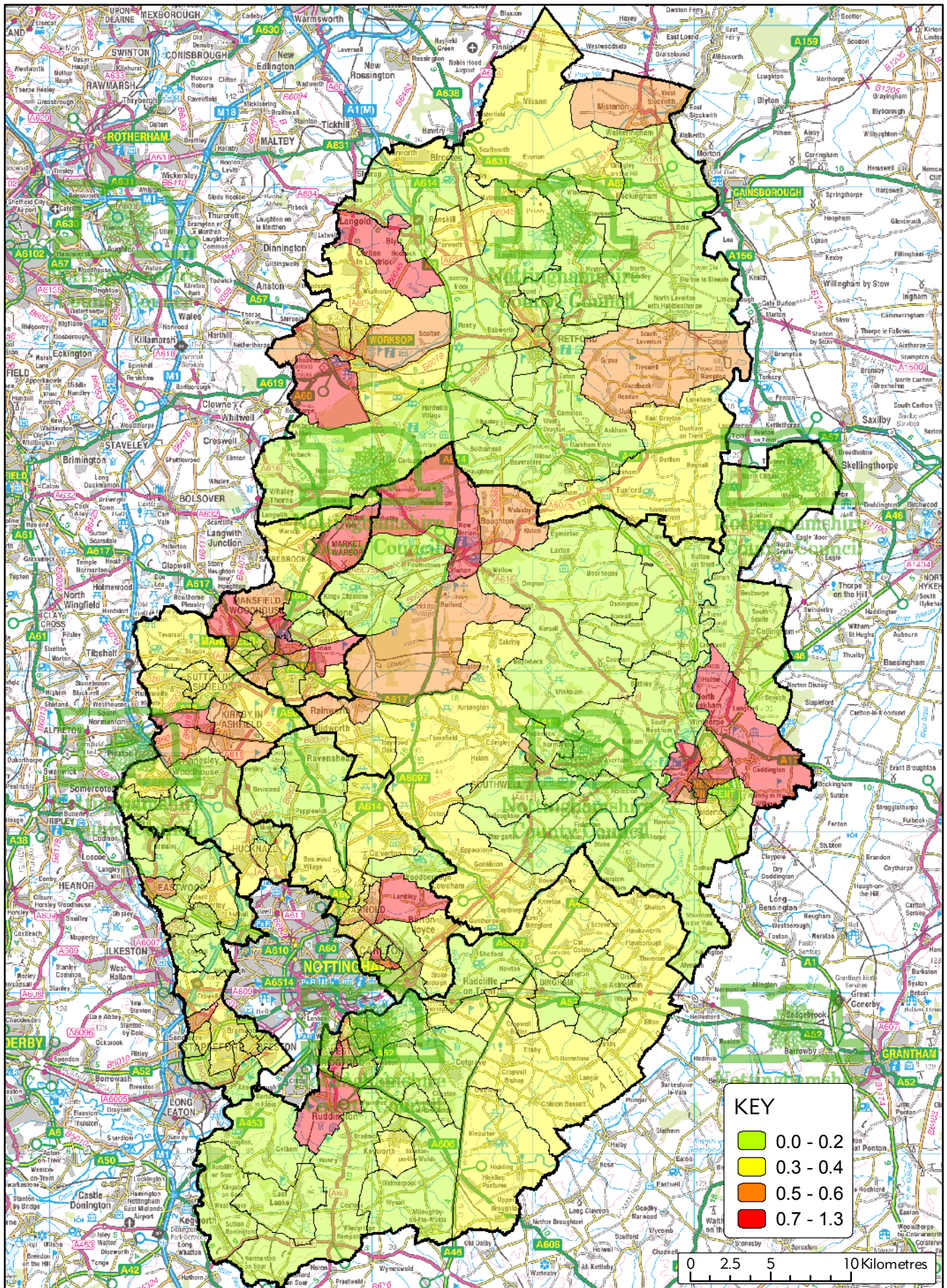
0 2.5 5 10 Kilometres



Map E4 : Adults in Need Total

This map is reproduced from Ordnance Survey material with the permission of Ordnance Survey on behalf of the Controller of Her Majesty's Stationery Office (c) Crown Copyright. Unauthorised reproduction infringes Crown Copyright and may lead to prosecution or civil proceedings. Nottinghamshire County Council OS Licence No. 100019713, 2008



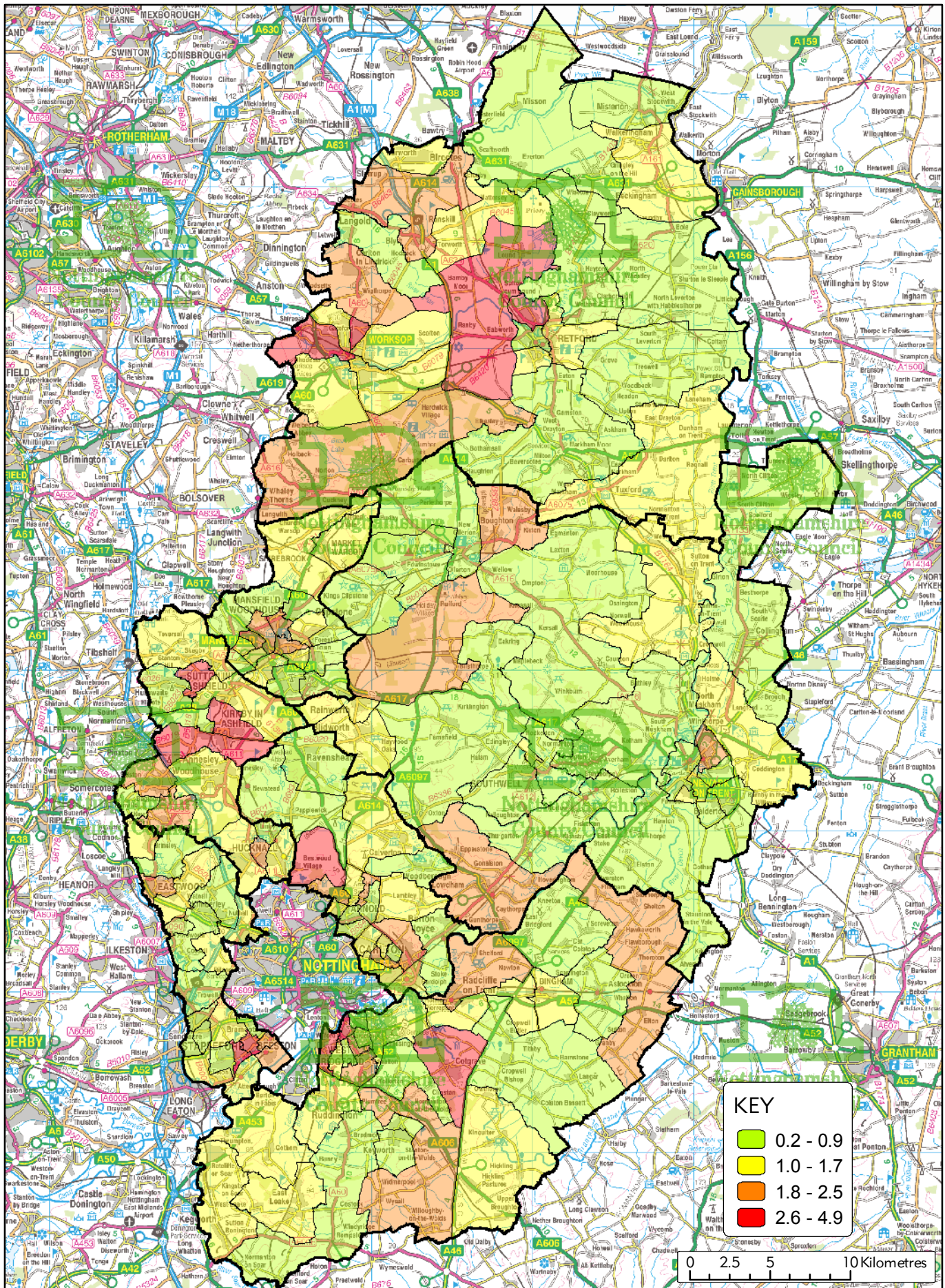


Map E5 : Adults in Need Learning



This map is reproduced from Ordnance Survey material with the permission of Ordnance Survey on behalf of the Controller of Her Majesty's Stationery Office (c) Crown Copyright. Unauthorised reproduction infringes Crown Copyright and may lead to prosecution or civil proceedings. Nottinghamshire County Council OS Licence No. 100019713, 2008





Map E6 : Adults in Need Mental Health



This map is reproduced from Ordnance Survey material with the permission of Ordnance Survey on behalf of the Controller of Her Majesty's Stationery Office (c) Crown Copyright. Unauthorised reproduction infringes Crown Copyright and may lead to prosecution or civil proceedings. Nottinghamshire County Council OS Licence No. 100019713, 2008

