

County Life

Enjoy your County Life

With residents' inspiring real-life stories and the latest on your Council services.

Could you foster?

How to get better broadband

Where your Council Tax goes

Find out what's on near you

WIN a great family day out





Nottinghamshire
County Council

Every day **one** child
goes into care



Could **you** be the **one** to help?
nottscc.gov.uk/foster

Figure based on a yearly average.

Welcome to County Life

As the new Chief Executive for Nottinghamshire County Council I'm excited about my new role and very proud to continue serving the people of Nottinghamshire.

At the Council, dealing with increased demand on our services and with reduced funding, means we have to work much smarter to continue delivering excellent services for less money.

This copy of County Life includes some great examples of how we are doing this, from making more services available online to offering rewarding volunteer opportunities that also help support our services.

As usual the focus of this publication is the residents of Nottinghamshire, this is because we always put the customer at the heart of everything we do, remembering that every person has their own unique needs and story.

I always find these real life stories inspiring, where people have shown strength to overcome adversity or demonstrated real kindness for no other reason than to help other people. This is why it's such a privilege for me to be entrusted with the responsibility of the Chief Executive role, working to improve the lives of all our residents.

Also included in this edition is important information on exactly how your Council Tax is spent and contact details for your local Councillor.

I hope you find all the content of County Life interesting and that in some cases it will inspire people to get involved in new activities that will be both personally fulfilling and support the communities in our county.

Finally please let us know what you think of County Life by sharing your feedback using the survey on page 31.



Anthony May
Chief Executive of
Nottinghamshire County Council

Contents

Improving your neighbourhood	4
Your county news	6
Get involved in volunteering	8
Wedding planning at Rufford	10
Getting into work - Bradley's story	12
Digital First - fit for the future	13
What's on	14
Faster broadband making lives better	18
How to become a foster carer	20
Library Access Points to communities	22
Your Council Tax information	23
Your Councillor	28
Reader survey and prize draw	31

Your annual County Life costs 19p per copy to produce, print and distribute to 352,279 homes in the county. The magazine provides useful information about how your Council Tax is spent and how you can access services. County Life is printed on lumisilk paper which is sourced from well-managed and sustainable resources conforming to the Forest Stewardship Council's standards.

If you would like to receive County Life in a different format, please call 0300 500 80 80. County Life is distributed for the County Council by The National Leaflet Company. If you have any comments about the delivery of your copy or are interested in advertising please phone 0115 977 4191 or email communications@nottscc.gov.uk

All information is correct at the time of print, March 2015.

Front cover photo: The front cover image was taken on the road between Newark and Aslockton.

Improving **your** neighbourhood

“It was fantastic and turned out to be a really busy day for shops.”

Sandy

We know just how important your local environment is to the quality of life for you and your community. To improve your neighbourhood, Nottinghamshire County Council is working hard to deliver high quality public buildings and highway improvements. The following are just a few examples that are due to be completed during the next three years.

Sandy really does love Hucknall!

Sandy Singleton is a woman on a mission, as chair of the community group 'We Love Hucknall'. "The group is delighted with the plans to pedestrianise Hucknall High Street" said Sandy, who has lived in the area for more than 15 years. The pedestrian zone will be between Watnall Road and Baker Street and will create an attractive shopping centre, which will entice new retailers and promote the regeneration of Hucknall.

The scheme which has been designed and led by the County Council will also address the problems of congestion with the construction of a new road and two new traffic signalised junctions.

'We Love Hucknall' was formed around 18 months ago and its aim is to promote local businesses and shops and to encourage people to shop locally.

In August last year, the upper part of the high street was pedestrianised when the committee organised a High Street Bonanza fun day. "This showed us what it will be like when the work is completed" said Sandy. "It was fantastic and turned out to be a really busy day for shops. As a community we are delighted with the plans to pedestrianise Hucknall High Street".

Work is due to start in August 2015 and complete in 2017 at an estimated cost of £12.9m. The majority of the funding is from the Department of Transport (DfT) and the remainder is

from Nottinghamshire County Council and Ashfield District Council.

“We are all looking forward to a safer and more environmentally friendly shopping experience.”

Sandy

To find out more information about the project visit nottinghamshire.gov.uk/hucknallimprovements or to get involved contact the 'We Love Hucknall' community group at welovehucknall.com



Nottinghamshire Archives extension takes shape

The current Nottinghamshire Archives building in Castle Meadow Road, Nottingham was opened by the Princess Royal in 1993 and had almost reached full storage capacity. The new building which is set to open in late April 2015, is part of a £2.5m investment project to preserve the county's rich documentary heritage. It will include a refreshments area, two meeting rooms and exhibition spaces.

Nottinghamshire Archives hold around four million documents in archives with the oldest document being a Henry II Charter dating back to between 1155 and 1165. There are a wide range of other documents such as council records, historical artefacts and collections from families.

If you've never had a chance to explore the Archives before, there will be a series of events offering residents the chance to do just that.



Find out more at
nottinghamshire.gov.uk/archives



Your new Worksop Bus Station

Worksop's new bus station is on the road to completion with a scheduled finish date of August 2015. Situated on the corner of Watson Road and Newcastle Street it will feature new facilities including toilets, baby changing room and a café/shopping space.

Designed and funded by Nottinghamshire County Council in partnership with Bassetlaw District Council, the new bus station

also features sustainable design elements including low energy lighting, solar (pvc) cells and rain water harvesting for toilet flush. These innovations have been used successfully in other bus stations, including Retford, Newark and Mansfield.

There is also an exciting pre-let opportunity for a café/retail unit within the new bus station development.



For more information visit
nottinghamshire.gov.uk/worksopbusstation

Property awards

Mansfield's £9m state-of-the-art bus station has scooped a number of prestigious awards for its design and construction. The bus station beat 11 other regional finalists from across the country to pick up the Community Benefit Award at the Royal Institution of Chartered Surveyors (RICS) national awards in October 2014 for the contribution it has made to the town since it opened in April 2013.

It was also crowned 'Best Public Service Building' at the grand final of 2014 Local Authority Building Control Awards (LABC). Judges described the building as "a superb community

facility that offers both comfort and protection to visitors and the local community as a working hub into the town".

The County Council also received further accolades at the LABC Awards, where its work at Carnarvon Primary School in Bingham and St Peter's Primary School in East Bridgford was praised and received a Finalist Certificate for the 'Best Educational Building'.

All of the awards are testament to the Council's high standards for workmanship and commitment to improving your neighbourhood.



Sandy Singleton

Your County News

Doing things differently

The County Council has made changes to some of its budget plans following feedback from local people.

The Council must save £77m by 2018 to balance its books. Its 'Doing things differently' budget consultation asked for views on 26 proposals to provide better value-for-money and provide services in different ways, saving more than £30m towards the shortfall.

More than 17,000 people responded to the consultation by completing the Council's survey, signing petitions, commenting online or taking part in focus groups.

As a result of your responses:

- Plans to close three ageing care homes in Gedling, Ollerton and Worksop have been postponed to allow time for further investment in alternatives, such as Extra Care places.
- A proposal to improve recycling rates by piloting a scheme of smaller general household waste bins will not go ahead, but other measures to reduce the county's annual £20m waste disposal bill will be explored.

To find out how the Council's budget will be spent in 2015/16 visit nottinghamshire.gov.uk/whatwespendspend

Libraries working together with your communities

In response to its budget challenge, Nottinghamshire County Council is looking to work with local communities to develop some of its smaller libraries into Community Partnership Libraries.

Each Community Partnership Library will be designed around the needs of that community. The Council is now talking to communities to find out what they want and how they can help develop a library which will benefit local people. With volunteers staffing the library or through communities offering alternative building arrangements, this will also significantly reduce costs. An ongoing support package from the library service will be provided. Many discussions are already

underway with Parish Councils, academies and support groups who wish to be involved.

Library staff are keen to talk to any community organisation or individual who would be interested in being involved.



For more information or to get involved email asklibraries@nottsc.gov.uk or call **01623 664 943**

Care and support changes in Nottinghamshire

This April, care and support in England is changing, following the introduction of the Care Act 2014. The main changes from April are:

- A national level of care and support needs
- Councils will be required to check whether people who are providing care to a friend or family member need support themselves to help them in their caring role
- Deferred payment agreements - arrangements that enable people to use the value of their homes to help pay care home costs
- Financial changes to care and support come into effect next year, in April 2016.

Nottinghamshire County Council already provides much of what is expected by the new requirements set up by the Care Act, offering equivalent thresholds, schemes and support.

In addition, the Council's been working closely with partners on new online information and advice directory - a one-stop place for all health, social care and community information - to help people look after themselves and keep active in the community. Find out more at nottshelpyourself.org.uk



For more information on care and support in Nottinghamshire, visit notts.cc/care-reform

Shale gas development in Nottinghamshire

Shale gas development involves fracturing rock to extract gas.

Earlier in the year, Gas Energy Plc submitted a scoping request to Nottinghamshire County Council for comment and consideration as part of possible plans to undertake shale gas development at a site in the northern tip of the county.

The request allows the Council to provide its opinion on the issues that will form the basis of the environmental impact assessment, which the company would need to submit with any future planning application.

The company has said that if it decides to submit a planning application, the development will

involve exploration of the site using test drilling to check the suitability of the rock for shale gas extraction. No hydraulic fracturing, or 'fracking' would be undertaken at this stage of development.

Local people would have the opportunity to comment on any proposal when and if a subsequent planning application is submitted by Gas Energy Plc.

As a Minerals Planning Authority, the County Council has a legal duty to consider planning applications for shale gas development.



Register at nottinghamshire.gov.uk/emailme to get the latest news on planning in Nottinghamshire.

Fibre broadband availability across Nottinghamshire

Delivering fibre broadband continues at a pace. The Better Broadband for Nottinghamshire programme has already made it possible for over 39,000 homes and businesses to connect to faster broadband. By 2016 we will have reached 52,000 premises.

An additional £5.26m of public funds, will extend the reach of fibre network further.

You can check out if your area has already 'gone live' at:

nottinghamshire.gov.uk/postcode-checker

Experience a better, quicker, more reliable internet connection and say goodbye to endless buffering. Don't forget, upgrading to fibre doesn't happen automatically. To check out the best deals for your area, there are multiple broadband comparison sites you can use to check what Internet Service Providers are offering.

Why not visit the Ofcom (Office of Communications) website which will give you access to Ofcom accredited comparison websites:

consumers.ofcom.org.uk/tv-radio/price-comparison



Helping others by **sharing** his talent

Walking into Matthew Plowright's studio is like walking into an Aladdin's Cave; every surface is covered with colour and artwork of various descriptions and you are left with no doubt that he is very talented.

The 26 year old textiles graduate from Beeston has not always had such confidence in his work. After suffering from challenging mental health for many years, Matthew became involved with Co-Production. The service is co-ordinated by Nottinghamshire County Council and encourages people to share their passion with others, which in turn helps them to find their own.

Matthew was invited by Co-Production to become one of their artists in residence during Mental Health Awareness Week 2014 at the Middle Street Resource Centre, Beeston.

"For two weeks Matthew came along and explained how his artworks and painting had helped him on the road to recovery" said Biant Singh Suwali, a Social Worker working in the Co-Production team. "Seeing his passion and how it has helped him has encouraged others to do the same".

"I felt supported and this gave me confidence" explains Matthew, who has gone on to display his work at a local pub, as well as being in talks with a Nottinghamshire Gallery who would like to exhibit his work.



"People appreciating my work, as well as now being able to sell some items, has really boosted my confidence. It's such a bonus that I'm also encouraging others to pick up their paintbrush" said Matthew.

Co-Production works on an approach that engages people to be part of the community to improve their health and well-being. Through using and sharing their skills, volunteers make a real difference to individuals and their communities. Example projects include music, art, adult education, horticulture and peer support groups.

"I've been able to swap my pills for paint".



Matthew Plowright with his artwork

Since working with Co-Production Matthew has gained confidence and been able to exhibit more work. Telling people about his work, including his picture story book collection about 'Roger the Prawn', has in his own words given him a new "sense of worth".

Five tips to help you and your loved ones rediscover good mental health:

1. Connect with people – family and friends.
2. Take notice of and enjoy your surroundings.
3. Keep active – go for walks.
4. Keep learning or reignite old passions.
5. Give something back to the community.



Everyone has a skill that they can give and volunteers are important and valued by Nottinghamshire County Council. Volunteers are needed in many services including libraries, country parks, archives, sport and youth services. To find out more about volunteering opportunities in your community visit [nottinghamshire.gov.uk/volunteering](https://www.nottinghamshire.gov.uk/volunteering)



Back row (L to R): Jean Manning, Sue McDonald, John Manning
Front row (L to R): Tia Loudon, Jessica Padley, Tiegan Rider, Amy McArthur

Volunteering brings Jessica a new band of friends

24 year old Jessica Padley has been attending the Robin Hood Festival since she was around three years old and never dreamt that one day she would be part of the action herself. But last summer, after seeing a request for volunteers on the Council's Robin Hood Festival Facebook page she decided to find out more.

The Robin Hood Festival is one of Nottinghamshire's main events and last year saw the 30th anniversary of the festival, attracting over 40,000 visitors.

"No two days were the same and the atmosphere was amazing" said Jessica, who has also volunteered for other events at Sherwood Forest Country Park, including the popular Lantern Walk in December. As well as being great fun, volunteering also looks great on Jessica's CV providing real work experience.

"I would recommend it to anyone that wants to extend their experiences and social circle" said Jessica. "I've made so many new friends since I've been volunteering with the Council".

Yvonne's busman's holiday

Yvonne Dooley, Rufford Abbey Country Park's Wedding Planner could think of no better place to hold her wedding after working there for seven years.

When Yvonne bumped into Mick for the first time since courting 30 years ago, she had no idea that just seven years later they would be declaring their love for each other in front of 93 close family and friends at Rufford Mill.

After planning nearly 500 weddings for other happy couples, Yvonne knew exactly what she wanted and the team of trusted staff at Rufford could not be beaten in her eyes. "I know the staff and venue so well and know the

suppliers. I see how hard they work for each individual wedding, so was really excited to have their help with organising my own" Yvonne said, still brimming with excitement from her wedding on 11 November last year.

Remembrance Day is an important date in Yvonne and Mick's lives and previously it had marked sadness in their family. "Now we have something happy to remember this day for" says Yvonne. The service took place at 11am and they held a two minute

silence as a mark of respect for those that had lost their lives. The theme through the wedding was poppies and each person attended was given a poppy button hole to wear.

Following the service their family and friends joined them for a slightly less traditional wedding breakfast of bacon and eggs, cooked by Rufford's resident chef who was more than happy to cater to their very individual needs.





Rufford Mill hosts between 70 and 80 weddings each year. Just by talking to Yvonne you can see how proud she is of the high quality venue and team they have built. They can host around 80 guests during the daytime and 150 for an evening reception. Having your wedding at Rufford Mill allows you to use the whole park to give your photographs a fabulous backdrop.



To find out more visit nottinghamshire.gov.uk/ruffordweddings or call **0300 500 80 80**.

Supporting people with Dementia

Nottinghamshire libraries are among the first in England to develop 'Memory Lane Kits' to support patients with dementia and their loved ones.

These kits are available at county libraries and include items such as buckets and spades, bicycle bells and darning mushrooms, as well as CDs and books on topics of a different era. The aim of the kits is to encourage interaction and communication between people living with dementia and their loved ones.



To find out more visit nottinghamshire.gov.uk/libraries

Health hubs

Bingham Library has become the first in the county to establish a 'health hub', an area of the library dedicated to health information. The scheme, which is set up by the County Council and the Rushcliffe Clinical Commissioning Group, aims to help people manage their health and well-being by providing access to health information and activities. This designated area of the library will hold self-help books, health and well-being initiatives and guest speakers on health topics.

West Bridgford and East Leake libraries will also be included in the scheme by the end of this year.

I never dreamt of having my own wedding anywhere else.

Yvonne

Bradley makes a great impression

21 year old Bradley Hurt from Papplewick has been working at Hardwick Motors for nearly nine months and has made a great impression on Steve Cook the owner.

“Bradley is a very valued member of our team.”

Steve



(L to R) Steve Cook, Joe Draycott and Bradley Hurt

Bradley had previously attended college to obtain a qualification in woodworking. During this time he undertook some work making bird boxes for a hotel, but was looking for something more secure. In June 2013 he got in touch with the I-work team at Nottinghamshire County Council, which helps people with learning disabilities get into paid employment.

Employment Inclusion Worker, Joe Draycott from I-work, introduced Bradley to Steve at Hardwick Motors for an initial placement to see how things would work. He made such a great impression that they soon offered him a full time job.

Commenting on the contribution Bradley has made to his company Steve said “Bradley is a very valued member of our team and one of the hardest working people I know, you set him a task and he just gets on with it”. Bradley loves his work which includes anything from painting and decorating to stripping back and cleaning machinery.

“It’s given me a sense of worth and belonging”, said Bradley. Having a regular salary has also allowed Bradley to indulge in his other passion - model railways and visiting steam trains across the country. Steve and Joe have both noticed

how Bradley has come out of his shell and built up his own confidence and communication skills with the encouragement of those he works with.

Steve said that he couldn’t credit I-work enough for their support to Bradley and his own team. “Joe supports Bradley, breaking down any training into manageable pieces”. Steve added “Joe also gave all our staff disability awareness training so now we all know how best to support Bradley”.



To find out more about I-work and what they could offer visit nottinghamshire.gov.uk/iwork or call **0300 500 80 80**.



Digital First - a new way of doing things

In an ever increasing digital world we all expect to have access to services at our fingertips 24 hours a day.

Nottinghamshire County Council's 'Digital First' project is designed with you in mind, offering residents easier to use and more convenient online services. Better use of digital technology is also a great way for the Council to save money with online transactions costing much less to complete than in person or over the telephone.

From this autumn some of these changes will start to appear with the launch of a brand new website that has a responsive design, meaning you can view it on your mobile phone, tablet or computer. The new website will be more intuitive and offer a better customer experience.

Our Digital First approach is also transforming the way the Council does business by putting technology at the heart of modern service-delivery. An example is that 1,500 social care employees will be using tablets by the end of 2015 to work 'on the move', which will save the Council an estimated £4.7m.

New technology also provides an opportunity for the Council to be more accessible and transparent.

For example, an attractive and easy to navigate infographic about the Council's spending is now available at nottinghamshire.gov.uk/whatwespend

Social media and personalised communication are also key areas for development to ensure residents get relevant information at the earliest possible opportunity. An example of this is the email bulletin system called 'emailme' which already has over 17 different topics and is set to increase

in 2015. To register to receive the email bulletins that matter to you, visit nottinghamshire.gov.uk/emailme

Digital First is an exciting journey making digital public service delivery fit for the future and contributing towards the £77m savings the Council needs to make by 2017/18.

To keep up to date with the latest developments or to get involved visit the blog at digitalfirstnotts.wordpress.com



What's on?

Events and activities in Nottinghamshire
April to July 2015



Family Fun



Arts & Heritage



Great Outdoors



Getting Active

(W) Suitable for individuals who use a wheelchair

Drumming for All



**Sunday 19 April and
Sunday 10 May**
11am - 3pm

Rufford Abbey Country Park
FREE (£3 parking)

Join Neil McCarthy from 'Let's Get Drumming' and enjoy this free hand drumming session for children and families. You need no experience to join in and a good time is guaranteed! For more information call **0300 500 80 80**.
(W)

Canary Hunt



Saturday 25 April
10am - 2pm

Bestwood Winding Engine House
FREE

Some of the pit's canaries have gone missing – can you help us find them? We'll give you a treat if you can! Find out about the importance of the little yellow birds in the mines. This event is ideal for children. For further information call **0115 976 2422**.
(W)



For even more events
visit nottinghamshire.gov.uk/whatson

Monsters and Villains: Illustration Workshop with Justin Wyatt



Saturday 25 April
11am - 12.30pm and
2pm - 3.30pm

West Bridgford Library

**£3 per child (accompanying
adults free)**

Learn to design villains, monsters and fantastic creatures with Justin Wyatt, illustrator of the popular Sea Quest series of books. Learn the techniques of artists and illustrators to create memorable and unique characters. For ages 7-11. Booking essential, for more information call **0115 981 6506**. **(W)**

Wednesday Health Walks



**29 April, 20 May, 17 June
and 15 July**
10.30am

**Bestwood Country Park - meet
at the Winding Engine House
car park**

FREE

Long proven to be one of the best forms of exercise to improve body and mind, this series of invigorating yet gentle 90 minute ranger-led walks are designed to do both. For further information call **0115 975 3782** or email sue.mcdonald@nottscc.gov.uk

Kings Mill Reservoir Open Day



Saturday 9 May
10am - 4pm

**Kings Mill Reservoir,
Sutton-in-Ashfield**

FREE

This beautiful nature reserve with fantastic wildlife is the backdrop for a wide range of community-based events and clubs. Find out about conservation projects and activity clubs or challenge yourself and have a go at sailing, canoeing, climbing and more! For further information call **01623 556 110**.

Treemendous Walk



Saturday 9 May
11am - 12.30pm

Sherwood Forest Country Park

**Adults £3 (£3 parking)
Children (under 12) £1.50**

May is the Tree Council's 'Walk in the Woods' month, so join us at Sherwood for a wander through the forest and learn more about this special place and its special trees. Call **01623 823 202** to book.

Please note a parking charge applies at Rufford and Sherwood Country Parks at certain times. Visit nottinghamshire.gov.uk/counyparks for more details.





Tony Kofi, photo by Bob Meyrick

Live Jazz in Libraries - Tony Kofi with the Andrew Wood Trio



Tuesday 12 May
7.30pm **Workshop Library**

Wednesday 13 May
7.30pm **Southwell Library**

Thursday 14 May
7.30pm **West Bridgford Library**

£12 / £10 concessions

Tony Kofi is the epitome of the 'local boy made good'. His career has seen him win awards and play with the biggest names in jazz. We're thrilled to have him play live in libraries. Call **0300 500 80 80** for information. **(W)**

Archives Tours



13 May, 28 May, 5 June,
25 June, 2.30pm

19 May, 9 June, 6pm

17 June, 3 July, 10.30am

Nottinghamshire Archives

£4 per person

See behind the scenes of the newly-refurbished Nottinghamshire Archives, with visits to our strong rooms, search room and conservation unit. Booking essential, call **0115 958 1634** or email archives@nottscc.gov.uk **(W)**



Andy Seed

Family History Scrapbooks



Tuesday 26 May
10am - 12noon

Nottinghamshire Archives

FREE

Children can make their own family history scrapbook, which may include family/baby photos (please bring these along) and local photos, maps and documents from the archives. Booking essential, call **0115 958 1634** or email archives@nottscc.gov.uk **(W)**

Silly Stuff with Author Andy Seed



Wednesday 27 May
11am - 12noon

Workshop Library

2pm - 3pm

Mansfield Central Library

FREE

Join the author of The Silly Book of Side-Splitting Stuff, for an entertaining mix of seriously silly facts, storytelling, poetry and jokes for ages 7 - 11. Booking advised, call **01909 535 353** (Workshop) and **01623 651 337** (Mansfield). **(W)**



Blunderbus

Blunderbus presents: My Pet Monster and Me



Saturday 30 May
11am and 2pm

Mansfield Central Library

£4 per person (Family Ticket £12)

Blunderbus Theatre Company return with their new monster of a show. Featuring an irresistible blend of music, puppetry and high energy storytelling, little monsters aged 3 - 7 (and their grown-ups!) will love this heart-warming tale. Booking essential, call **01623 651 337**. **(W)**

Meet a Monk



Sunday 31 May
12noon - 4pm

Rufford Abbey Country Park

FREE (£3 parking)

Meet Brother Oswald, Cistercian Lay Brother of Rufford Abbey. Learn about the Abbey buildings and the lives of the monks who lived here 800 years ago. Brother Oswald will be available from noon to answer questions before a tour of the Abbey at 2.30pm. Call **0300 500 80 80** for information.

All outdoor events are weather dependent. Please contact the venue before visiting if in doubt.





Caryl Hart



Caryl Hart's Story Workshops



Saturday 6 June

11am How to Grow a Dinosaur (ages 4 - 7)

1.30pm Foxy Tales (ages 7 - 10)

West Bridgford Library

£3 per child (accompanying adults free)

Join award-winning children's author Caryl Hart for fun-filled, interactive and creative workshops that bring her brilliant titles to life. Booking essential, call **0115 981 6506. (W)**

Mini Miners go Fishing



Saturday 6 June and Saturday 4 July
10am - 1pm

Bestwood Winding Engine House
FREE

Relax by the 'pond' (as many miners used to) after your hard shift and see if you can catch some fish – try to avoid the smelly old boot! Call **0115 976 2422** or email adele.williams@nottscc.gov.uk for further information. **(W)**

Get the latest with our what's on emails. Register at nottinghamshire.gov.uk/emailme



Brass Band Sundays



Harworth Brass
Sunday 7 June
2pm - 4pm

Kirkby Colliery Welfare Band
Sunday 5 July
2pm - 4pm

Rufford Abbey Country Park
FREE (£3 parking)

Relax and listen to a traditional brass band in the Coach House courtyard, against the impressive backdrop of the Jacobean wing of the Abbey. Bring a chair, make yourself comfortable and enjoy the music. Call **0300 500 80 80** for information. **(W)**

Roundheads, Cavaliers and Outlaws: Celebrating the Magna Carta and its Impact on Nottinghamshire



Saturday 13 June
10am - 3pm

Nottinghamshire Archives
FREE

A fun-filled open day at the newly-opened Nottinghamshire Archives with talks and readings, costumes and artefacts to handle, table-top war gaming, displays of archives and creative craft activities with our conservation team. Call **0115 958 1634** for information. **(W)**



Falconry Demonstration Day – Hawks of Steele



Sunday 14 June
10am - 4pm

Rufford Abbey Country Park
FREE (£3 parking)

Hawks of Steele will give an insight into the 'Sport of Kings' explaining why and how the birds of prey are trained. Flying displays will take place at approximately 12noon and 3pm but may be cancelled if high winds or rain. Call **0300 500 80 80** for information. **(W)**



Birklands Bike Ride



Sunday 14 June
10.30am - 1pm

Sherwood Forest Country Park
Adults £3 (£3 parking)
Children (under 12) £1.50

Join the ranger team on a 5.5 mile bike ride of discovery calling in at various points of interest along the way. This is a steady ride on paths and some cross-country terrain. All participants should be proficient cyclists and cycling helmets are essential. Places must be pre-booked on **01623 823 202**. Bring your own bike.

Special Events

This year's biggest events and festivals in Nottinghamshire

Grand Historical and Vintage Bazaar



**Saturday 25 -
Sunday 26 April**

**Rufford Abbey Country Park
FREE (£5 car parking)**

Swap or sell your historical items at our multi-period bring and buy sale. Enjoy re-enactors in period costume giving living history displays throughout the weekend. **(W)**



Local History Fair



**Sunday 10 May
Mansfield Central Library**

FREE

A fabulous day out for all the family with local history displays, children's activities, costumed characters, local history books for sale and more! **(W)**

Earth & Fire



**Friday 26 -
Sunday 28 June**

**Rufford Abbey Country Park
FREE (£5 car parking)**

Earth and Fire is one of the country's premiere ceramic events. Over 100 potters from across the UK and Europe come to sell direct to the public from outdoor market stalls. **(W)**



Southwell Library Poetry Festival



**Friday 3 - Sunday 5 July
Southwell Library**

The annual poetry festival returns with performances from poets including John Hegley and fascinating workshops on everything from Shakespeare to Dr Seuss.

Southwell Library

POETRY FESTIVAL
3-5 JULY 2015



Major Oak Woodland Festival



**Saturday 12 -
Sunday 13 September**

**Sherwood Forest Country Park
FREE (£3 car parking)**

Explore the forest and meet bodgers, windsor chair makers, charcoal producers, wood turners, archaeologists, conservation organisations and the Wild Man of the Woods.

On the Home Front - 1940s Living History Weekend



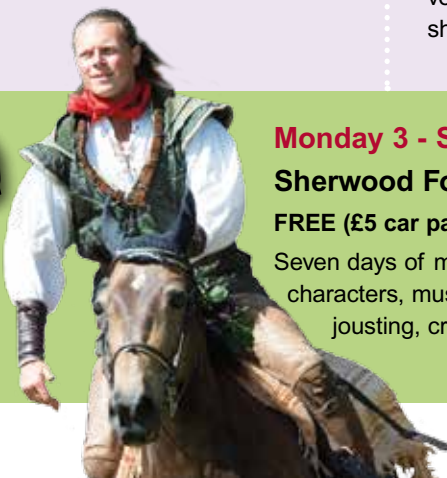
**Saturday 26 -
Sunday 27 September**

**Rufford Abbey Country Park
FREE (£5 car parking)**

Experience the sights and sounds of wartime Britain with flypasts, living history shows, military vehicles, battle displays, puppet shows and more. **(W)**

31ST

Robin Hood Festival



**Monday 3 - Sunday 9 August
Sherwood Forest Country Park
FREE (£5 car parking)**

Seven days of medieval fun! Including costumed characters, musicians, falconry displays, archery, jousting, crafts, stalls and more!

Faster **Broadband** making lives better

More than 39,000 homes and businesses can now access a faster, reliable, more resilient broadband service thanks to the Better Broadband for Nottinghamshire programme – bringing fibre-optic connectivity across the county.

Nottinghamshire County Council and BT are working together to extend the commercial roll out of fibre broadband to 95% of premises in Nottinghamshire by the end of March 2016, delivering fibre broadband to a total of 52,000 homes and businesses.

Keeping it in the neighbourhood

For businesses in rural areas, access to high speed broadband can be the difference between failure and success.

“Everyone expects things immediately,” says Steff Wright, who owns the Gusto Group in Collingham, Newark, where internet speeds were so slow that many local businesses considered relocating.

“It’s ten times faster than it was and it’s particularly great for us. Part of what we do is construction. We’re currently building 30 houses in Collingham and one of the first questions we get asked when we’re trying to sell a house is ‘how fast is the internet?’ The fact that Collingham now has superfast broadband...it’s a big deal.”

Keeping in touch with the family

Tony Jarrow, a retired physics teacher, lives in Cropwell Bishop and until very recently, even simple tasks like downloading a photo album were problematic, due to the area’s sluggish internet speeds.

With a brand new fibre optic cable providing Cropwell Bishop with much faster internet speeds, Tony and his wife upgraded to fibre connection and can now chat to their grandkids and catch up on all their favourite shows at the click of a button.

“It’s great. We can talk to the grandkids whenever we want and when they come round, we can watch iPlayer, Skype and Netflix. We can do so much more.”

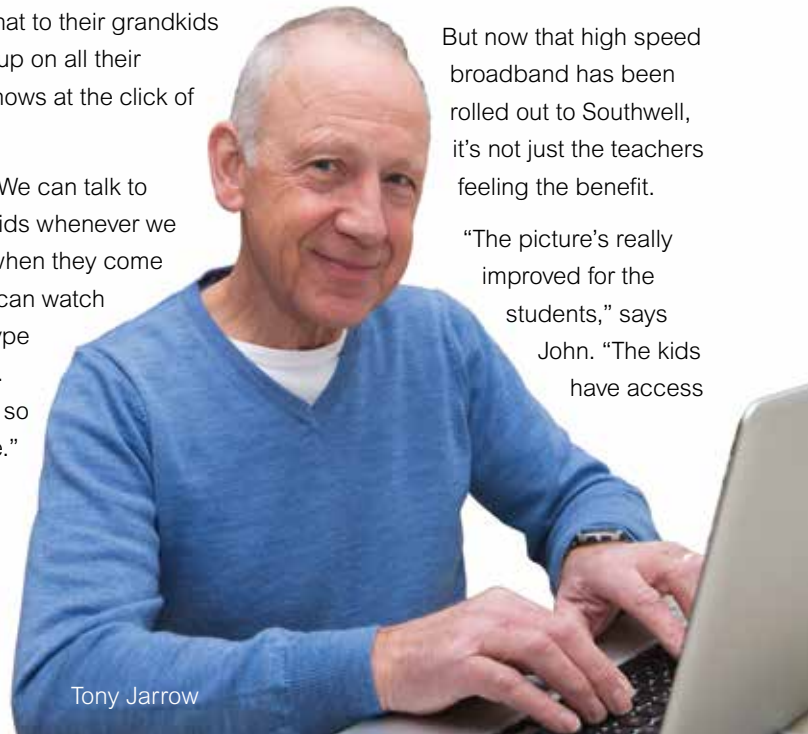
Schoolwork made easier and more accessible

“It’s made a massive difference,” says John Partridge, assistant head-teacher at the Minster School in Southwell.

Before, low bandwidth meant that classrooms would often lose their connection and websites would go down or take a while to load. “That can be really frustrating when you’ve planned a lesson.”

But now that high speed broadband has been rolled out to Southwell, it’s not just the teachers feeling the benefit.

“The picture’s really improved for the students,” says John. “The kids have access



Tony Jarrow

Talk to your Internet Service Provider about special offers on high speed fibre broadband



to more resources and the quality of their work has definitely improved.”

The good news doesn't stop there either. With an additional £5.26m of public funds in place, we hope to extend the reach of fibre further so that we cover 97% of the county. The detail of this is yet to be confirmed, but the best place to go to keep informed is our dedicated broadband web pages, where you can also check to see if your area has already gone live, visit nottinghamshire.gov.uk/broadband

Don't forget to check our Facebook page and share it with your friends at [facebook.com/nottinghamshirebroadband](https://www.facebook.com/nottinghamshirebroadband)

Healthier eating HOTs up in Notts

Ordering a takeaway may no longer have to be such a guilty pleasure with the launch of the Healthier Options Takeaway (HOT) scheme by the County, District and Borough councils.

Many people now try to maintain a healthy, balanced diet, but this isn't always easy to do when you're on the go and want a healthy but convenient meal or snack. However with the new HOT scheme businesses across the county are being encouraged to commit to offering healthier ways of preparing, cooking and serving food and drink to customers.

This doesn't have to be major changes but can be achieved through small alterations such as reducing salt and sugar levels in food, grilling instead of frying or changing fridge displays to make healthier drinks more prominent.

Any business in Nottinghamshire that offers takeaway food and has a food hygiene rating of three or above can apply free of charge for the scheme. The process is simple and qualifying outlets will be able to display HOT branding in their premises to let customers know that they are offering healthier choices on their menu.

Takeaways are scored on how they sell and promote healthier alternatives, and are being asked to make at least three new pledges to change their current menus or practices. It is a great opportunity for businesses to increase

choice and create greater customer satisfaction as well as potentially enhancing their reputation and increasing sales.

The HOT scheme is just one approach to help tackle the county's obesity problem, giving people more options and showing that there can be a healthier alternative without compromising on taste. The scheme isn't about stopping people from having a takeaway but promoting healthier options.

Are you a business and want to be HOT?

You can apply for the HOT merit scheme by visiting nottinghamshire.gov.uk/hot, complete and return the assessment form to your Local Authority Environmental Health Department or Health Development Officer for your area.



Foster caring helps to fill our **empty nest** again

Feeling like their home was empty after many years of children and grandchildren running around, Wendy and Greg made the first enquiry into fostering.

“It all moved rather quickly in the end.”

Wendy

After their initial enquiry a member of the fostering team at Nottinghamshire County Council phoned Wendy and Greg for a brief chat, and sent them an information pack. This spurred the couple on and they decided they wanted to take their application further. The next step was a visit to their home from a supervising social worker which included a more in-depth interview about Wendy and Greg's family life.

“It was very daunting at first” explained Wendy, “so much detail was required and I was worried that we may not be approved”. Wendy's mind was soon put at ease when she realised the information she provided was necessary to help the Council ensure children are cared for safely. The details would also be used to help match children to the couple's family



Wendy and Greg

and lifestyle. “You realise that it's all for the children, it's so important you go through this process so you're prepared for them” said Wendy.

The visits from the supervising social worker took place every week, allowing the Council to gain information about the couple's lives and giving them the chance to ask any questions.

Wendy said “During the assessment we took part in four training sessions which were incredibly helpful and

allowed us to meet others going through the same process.”

The couple then attended a panel interview as part of the decision making process, where they were supported by their own supervising social worker. Soon after the interview Wendy and Greg were thrilled to find out they had been approved as foster carers and were contacted shortly afterwards about a placement.

“It's wonderful to open our home up to children who need it”, Wendy

explained, “one of my nicest memories is of a little boy who was very reserved when he first arrived with us, sitting happily passing blocks to Greg who was building him a toy garage.”

The couple now care for children on a regular basis as support foster carers; this means they often have children for short, regular periods such as a few days in the week or short breaks in the holidays. They offer vital support for families when relationships become tense and they need time to recuperate.

“It’s wonderful seeing these children gain confidence in us, it makes us realise that they feel secure when with us, that makes it all worth it.

Wendy

The Council is currently in real need of people who could offer foster care to young people aged 11 years and over or sibling groups of all ages.

To find out more about fostering visit nottinghamshire.gov.uk/fostering or contact the fostering recruitment team on **0845 301 8899** or email fostering@nottscc.gov.uk

James’ wish comes true

All seven year old James wanted was his “own special foster family”. After being in residential care in Nottinghamshire for some time, James was moved to a residential home outside of the county that met his specific needs while he waited for a foster placement back in Nottinghamshire to be found.

Maggie and Graham, who are long term foster carers came across James’ profile on the secure Nottinghamshire County Council foster carers’ website and decided that they could offer him just what he had always wanted. The timing was perfect as Maggie and Graham were preparing for an older child who had been in their care for some time to leave their home and were now looking for their next step as foster carers.

James was classed as a ‘Child who Waits’ while he was placed in residential care, which provided stability and support, but not the special family which he longed for.

After initial introductions and many planned visits over several weekends with support from health, education and psychologists, it was agreed that James would go to live with them in October last year. Maggie explains that he settled in really well, immediately becoming part of the family which includes another 17 year old foster child and the family dog, who James quickly claimed as his own. Last year James enjoyed his first Christmas with the family including many things he had never experienced before.

“His face just lit up when he walked into the living room on Christmas morning.

Graham knows only too well what it feels like to be fostered as a child, and is glad he now has the opportunity to offer the same care and support to children who need it. Together Graham and Maggie have fostered many children during the six years since they were approved, both on a long term and support care basis. Maggie is keen to point out that fostering does come with challenges and would recommend anyone considering it, to make contact with the County Council to find out more about what is involved. “There is so much support; you feel you can deal with anything. We have our own excellent supervising social worker and other trained professionals are available including ‘out of hours’ support to help with any queries or specific challenges”. Maggie added “The County Council also offers a buddy system which is in place to help if you need it”.

For James, things couldn’t be better. He is now with his very own “special foster family” and is feeling happier and more secure than he has in a long time. He is also very excited about starting at the local school soon.

Mo leads the way to better access!

“ Thrillers, romance and children’s fiction, we have something for everyone here. ”

Mo

Mo Tyler is a retired schoolteacher and also a volunteer at the South Scarle Community Centre, where Nottinghamshire’s very first Library Access Point (LAP) opened back in January 2015. LAPs are small collections of books, supported by the library service and made accessible by organisers in the local community.

Together with a band of willing volunteers, Mo played an important role in the opening of the access point, working tirelessly to get everything done. She even canvassed door-to-door to ask what everyone wanted.

The idea for LAPs came out of a meeting of Nottinghamshire’s Cultural Committee last May and was later brought to the attention of David Clarke, South Scarle’s Parish Council Chairman.

With the help of the County Council’s library service, 300 books were loaned to them. Every four months up to half of the collection is refreshed and new books are delivered by the visiting mobile library. Between deliveries, volunteers can also exchange small numbers of books with their nearest local library at Collingham.

Florence Baldwin a resident of South Scarle said “It has become another opportunity to get together and the library has become very popular, new people are joining up every time it’s open”.

The access point is open twice a month but Mo said, “We will work out future opening times according to everyone’s needs. I want to give everyone the opportunity to be part of this”.



(L to R) Florence Baldwin, David Clarke, Jean Ashley, Elaine Leak, Mo Tyler

Book prescriptions

At some stage over our lives many of us will reach for a self-help book to improve our health and well-being such as giving up smoking or losing weight. Working with the local health authorities, Nottinghamshire County Council has taken this a step further and made it possible for GPs to prescribe the book that may help you.

County residents suffering from mental health conditions are able to borrow self-help books from local libraries, with a core list of 30 titles covering a range of issues including anxiety, depression and chronic pain. In January 2015 books covering dementia were also added. The initiative from Library Services, Public Health, the Society of Chief Librarians and The Reading Agency is free to use and books can be loaned for up to three weeks from county libraries.

Books are available from all 60 libraries across the county. Books can be recommended or ‘prescribed’ by your GP or another health and well-being professional. Some people may also use the self-help books independently as a first step in seeking help.



For more information visit nottinghamshire.gov.uk/libraries

Your Council Tax

What is Council Tax?

Local services provided by County and District Councils, plus the Police and Fire services are all paid for by Council Tax and Government grants, and in some cases through charges for services. The amount you pay for Council Tax is based on the value of your property.

What does Council Tax pay for?

Your final Council Tax bill is made up of different charges for the public services provided. Your bill is then made up of contributions to the County Council, your District Council and Police and Fire.

To find out more details about how your Council Tax is spent and the services delivered, visit the relevant website listed on this page.



Nottinghamshire County Council
nottinghamshire.gov.uk

These services include care services for older and vulnerable people, road maintenance, public transport, libraries, country parks, schools and other education services, community safety and development.



Ashfield District Council
ashfield-dc.gov.uk



Bassetlaw District Council
bassetlaw.gov.uk



Broxtowe Borough Council
broxtowe.gov.uk



Gedling Borough Council
gedling.gov.uk



Mansfield District Council
mansfield.gov.uk



Newark & Sherwood District Council
newark-sherwooddc.gov.uk



Rushcliffe Borough Council
rushcliffe.gov.uk

Services provided by the District and Borough Councils include collection of household waste, leisure, parks and sports centres, planning and development, car parks and housing needs.

The District or Borough Councils also collect the contribution from residents who have Parish Councils in their area. This charge, known as a precept, is used for providing Parish Council services.



Police and Crime Commissioner
nottinghamshire.pcc.police.uk

The Police and Crime Commissioner works to ensure that local policing meet the public's and victims' needs. The Commissioner also brings different community safety and criminal justice partners together to tackle crime and disorder.



NOTTINGHAMSHIRE
Fire & Rescue Service
Creating Safer Communities

Nottinghamshire Fire & Rescue Service
notts-fire.gov.uk

Notts Fire and Rescue Service prevents fires and other incidents by helping improve safety at people's homes and businesses around the county through support and education work – and, if the worst does happen, they respond to fires and other incidents when people need them most.

Delivering **value** **for money** services

An increase to your Council Tax

Nottinghamshire County Council have approved a 1.99% increase in the County Council element of the Council Tax for 2015/16 – an extra 39p per week on the average bill.

The increase will raise around £16.5m over the next three years for public services such as care for older people and people with disabilities, road maintenance, school crossing patrols and job creation.

The Council needs to reduce its spending by £77m by 2017/18 to balance its books.

In total, the County Council will spend more than £1 billion during 2015/16 providing services to people living in Nottinghamshire, raising £296m from local Council Tax payers.

The £16.5m raised from the increase in Council Tax will fund the equivalent of:

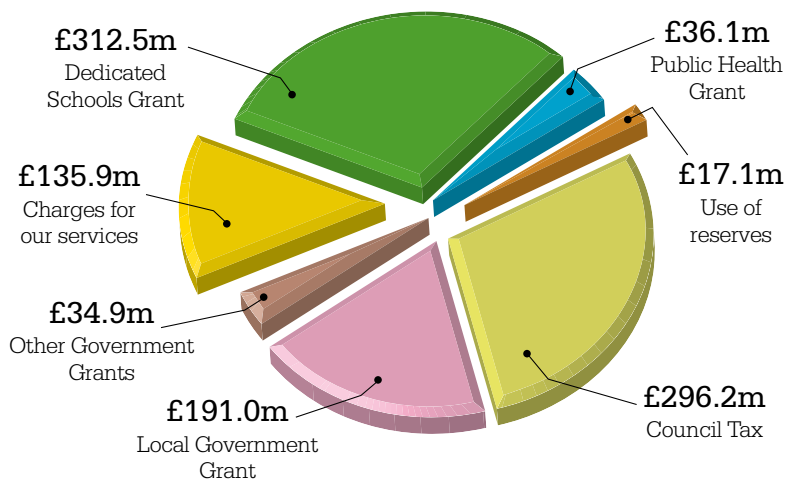
- keeping all the county's 95,000 streetlights and traffic signals switched on until 2018, or;
- providing care for nearly 20,000 vulnerable children, or;
- providing care and support for 36,500 adults with learning difficulties.

Your Council Tax payment 2015/16

Band A	£ 827.43	The actual amount you pay will depend on your individual circumstances (whether you receive single person discount, student or disability exemptions etc) and additional amounts for your District or Borough Council, Fire and Police services.
Band B	£ 965.33	
Band C	£1,103.24	
Band D	£1,241.14	
Band E	£1,516.95	
Band F	£1,792.76	
Band G	£2,068.57	
Band H	£2,482.28	

Where the Council's budget comes from

For 2015/16



Making the most of your money

The County Council receives dedicated grants from Government to fund public health and schools. All other income for the Council (including Council Tax) is used to deliver high quality services for you and your family, examples of these are illustrated on the next page.

Investing in Nottinghamshire

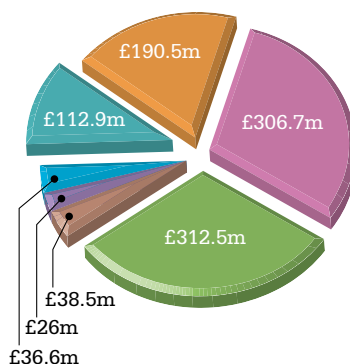
Major schemes for the Council's 2015/16 investment programme, which is worth £112m, include:

- Ongoing investment of £53m** up until 2016/17 to fund the School Places Programme to ensure that sufficient school places are provided across the county.
- Continuing investment of £35m** until 2017/18 to improve the condition of school buildings.
- £19m** to finance road maintenance and improvements and investment in cycling, walking and public transport schemes.
- £10m** to carry out the Hucknall Town Centre Improvement Scheme over the next three years.
- £7m** investment in the Better Broadband for Nottinghamshire Project which aims to provide access to high speed fibre network to 95% of premises.
- The final £5m** contribution towards the completion of the A453 widening project.
- £3m** over the next three years to support investment in energy efficient and heating and lighting schemes.
- £1m** investment to enable completion of Worksop Bus Station.

For further information visit nottinghamshire.gov.uk/counciltax or call **0300 500 80 80**.

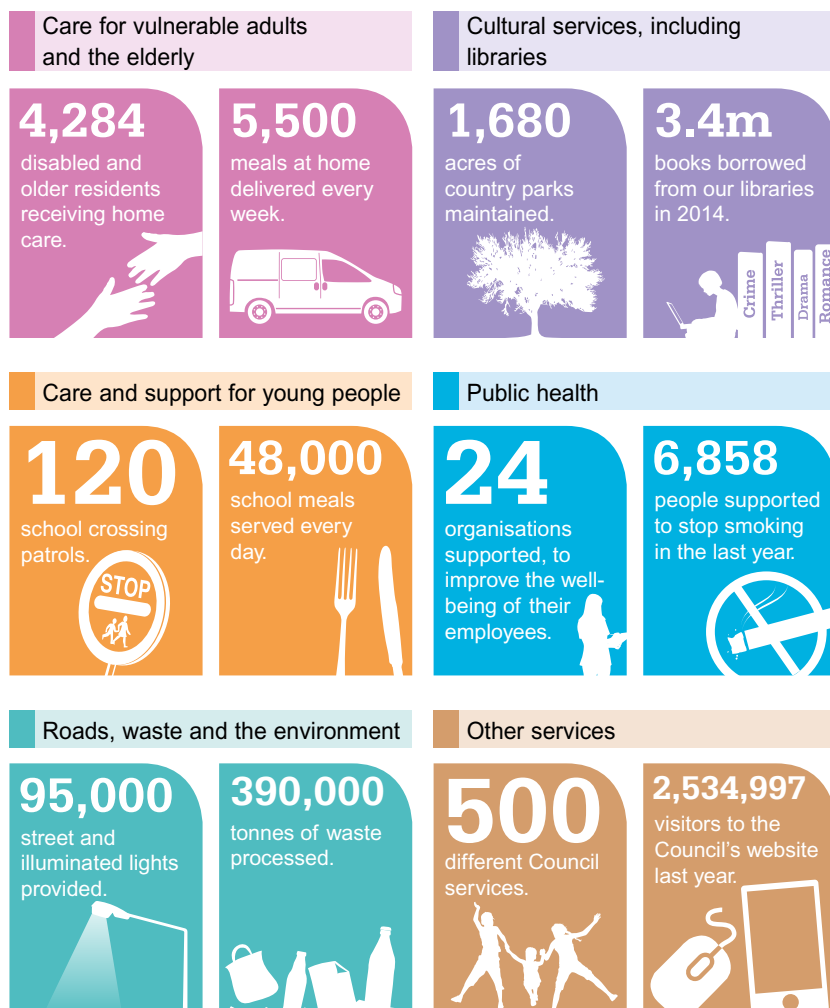
How the Council's budget is spent

For 2015/16



Care for vulnerable adults and the elderly	£306.7m
Care and support for young people	£190.5m
Roads, waste and the environment	£112.9m
Cultural services, inc libraries	£26.0m
Public Health	£36.6m
Other services	£38.5m
Schools	£312.5m

Just a few examples from over the last year



All information correct at the time of print, March 2015.

The Cost of Policing

Our budget from April will be £189.6m, of which £3m will be financed from reserves and which, in real terms, is a reduction of around £11m if you take into account inflation and a £6.8m reduction in funding.

Following consultation with local residents and with the approval of the Police and Crime Panel, the amount of council tax paid towards policing will increase by 1.98% - £3.42 extra a year for a Band D property - from April 2015.

This year we will use our resources to develop new ways of making our different communities safer, such as crime prevention work, a renewed focus on the needs of rural areas and support for partnership schemes.

WHAT THIS MEANS WHERE YOU LIVE:

TAX BAND	ANNUAL INCREASE	TOTAL AMOUNT
Band A	£2.28	£117.60
Band B	£2.66	£137.20
Band C	£3.04	£156.80
Band D	£3.42	£176.40
Band E	£4.18	£215.60
Band F	£4.94	£254.80
Band G	£5.70	£294.00
Band H	£6.84	£352.80

All properties in the County, apart from those in Rushcliffe, will have received an information leaflet within their council tax bills. Anyone wishing to download this leaflet can do so from our website.



Nottinghamshire

POLICE & CRIME COMMISSIONER

Nottinghamshire office of the Police and Crime Commissioner
 Arnot Hill House, Arnot Hill Park
 Arnold, Nottingham NG5 6LU

Tel: 0115 844 5998

Email: nopcc@nottinghamshire.pnn.police.uk

www.nottinghamshire.pcc.police.uk



Nottinghamshire Fire and Rescue Service keeping you safe

You are safer at home, work and on the roads than ever before thanks to Nottinghamshire Fire and Rescue Service (NFRS).

NFRS were called out fewer than 10,000 times in 2014 and that is in no small way as a result of the community safety and education work they do in your area.

Firefighters and community safety staff carried out more than 6,500 Home Safety Check visits that helped prevent fires in people's homes and life-saving smoke alarms were fitted in those homes just in case the worst does happen.

However, there is still more work to do to reduce incidents further meaning that, in different ways, NFRS is busier than ever before.

Chief Fire Officer John Buckley said: "Firefighters and staff provide an excellent service to the community by visiting people at home, at school and in many other places to provide support and education and that's led to a historic reduction in incidents this year – it was fewer than 10,000 for the first time in 2013 and we drove that down further in 2014."

"Yet the hardest job may still be to come as people continue to suffer fires, and become involved in collisions and other incidents, and we want to do as much as we can to prevent that."

"Below you can see what you pay for your fire and rescue service and we promise to use that money wisely to continue making you safer and being there if you need to dial 999."

For more information about how NFRS uses your money, please visit www.notts-fire.gov.uk/counciltax.asp

In 2014, NFRS:

- Delivered 6,586 Home Safety Check visits.
- Attended 9,468 incidents.
- Carried out 2,800 business safety visits.

In 2015, NFRS will cost you £72.44 for the entire year if you live in a Council Tax Band D property.

NFRS needs £41.8m this year to provide you with the services described above and this comes from:

- Council Tax - £21.5m
- Government grant - £10.3m
- Business rates - £10m

Nottinghamshire Fire and Rescue Service

You are safer at home, work and on the roads than ever before thanks to Nottinghamshire Fire and Rescue Service (NFRS) and here we show you how we use your money to achieve that.

For more information about NFRS and how we use your Council Tax to make you safer and protect you if you need us in an emergency, please go to www.notts-fire.gov.uk/counciltax.asp

Where the money comes from...

Council Tax £21.5m

Council Tax bands & amounts



Government Grant £10.3m

Business Rates £10m

Total Income

£41.8m

In 2014...

2,800 visits to businesses made thousands of employees safer from fire at work

6,586 people made safer through a Home Safety Check visit

9,468 emergency calls attended by firefighters



NOTTINGHAMSHIRE
Fire & Rescue Service
Creating Safer Communities

Your Councillors

ASHFIELD

Hucknall



Alice Grice (L)
07771 763573
cldr.alice.grice@nottscc.gov.uk



John Wilkinson (L)
07772 970540
cldr.john.wilkinson@nottscc.gov.uk



John Willmott (Ind)
07854 845449
cldr.john.wilmott@nottscc.gov.uk

Kirkby-in-Ashfield North



John Knight (L)
01623 470771
cldr.john.knight@nottscc.gov.uk

Kirkby-in-Ashfield South



Rachel Madden (LD)
01623 457046
cldr.rachel.madden@nottscc.gov.uk

Selston



Gail Turner (SAI)
01773 780926
cldr.gail.turner@nottscc.gov.uk

Sutton-in-Ashfield Central



David Kirkham (L)
07794 791875
cldr.david.kirkham@nottscc.gov.uk

Sutton-in-Ashfield East



Steve Carroll (L)
07946 267788
cldr.steven.carroll@nottscc.gov.uk

Sutton-in-Ashfield North



Jason Zadrozny (LD)
07980 408908
cldr.jason.zadrozny@nottscc.gov.uk

Sutton-in-Ashfield West



Tom Hollis (LD)
07854 720602
cldr.tom.hollis@nottscc.gov.uk

BASSETLAW

Blyth and Harworth



Sheila Place (L/Co-op)
01909 731900
cldr.sheila.place@nottscc.gov.uk

Misterton



Liz Yates (C)
01777 860219
cldr.liz.yates@nottscc.gov.uk

Retford East



Pam Skelding (L)
01777 704998
cldr.pamela.skelding@nottscc.gov.uk

Retford West



Ian Campbell (Ind)
07561 085096
cldr.ian.campbell@nottscc.gov.uk

Tuxford



John Ogle (C)
01777 248982
cldr.john.ogle@nottscc.gov.uk

Worksop East



Glynn Gilfoyle (L)
01909 477650
cldr.glynn.gilfoyle@nottscc.gov.uk

Worksop North



Sybil Fielding (L)
01909 501362
cldr.sybil.fielding@nottscc.gov.uk

Worksop North East and Carlton



Alan Rhodes (L)
0115 977 3256
cldr.alan.rhodes@nottscc.gov.uk

Worksop West



Kevin Greaves (L)
01909 484053
cldr.kevin.greaves@nottscc.gov.uk

BROXTOWE

Beauvale



John Handley (C)
01773 531466
cldr.john.handley@nottscc.gov.uk

Beeston North



Steve Carr (LD)
07946 411901
cldr.steve.carr@nottscc.gov.uk

Beeston South and Attenborough



Kate Foale (L)
07917 028645
cldr.kate.foale@nottscc.gov.uk

Bramcote and Stapleford



Stan Heptinstall MBE (LD)
0115 916 4588
cldr.stan.heptinstall@nottscc.gov.uk



Jacky Williams (LD)
0115 917 4693
cldr.jacky.williams@nottscc.gov.uk

Chilwell and Toton



Dr John Doddy (C)
0115 977 5644
cldr.john.doddy@nottscc.gov.uk



Richard Jackson (C)
0115 939 9051
cldr.richard.jackson@nottscc.gov.uk

Eastwood



Keith Longdon (LD)
07917 599855
cldr.keith.longdon@nottscc.gov.uk

Kimberley and Trowell



Ken Rigby (LD)
0115 930 7452
cldr.ken.rigby@nottscc.gov.uk

Nuthall



Philip Owen (C)
0115 938 9728
cldr.philip.owen@nottscc.gov.uk

GEDLING

Arnold North



Pauline Allan (L)
0115 967 6722
cldr.pauline.allan@nottscc.gov.uk



Michael Payne (L)
07814 716077
cldr.michael.payne@nottscc.gov.uk

For a full list of the latest contact details visit
nottinghamshire.gov.uk/councillorsdetails

Arnold South

Roy Allan (L)
0115 967 6722
cldr.roy.allan@nottscc.gov.uk



Muriel Weisz (L)
0115 920 9100
cldr.muriel.weisz@nottscc.gov.uk

Calverton

Boyd Elliott (C)
07944 227797
cldr.boyd.elliott@nottscc.gov.uk

Carlton East

Nicki Brooks (L)
07771 834098
cldr.nicki.brooks@nottscc.gov.uk



John Clarke (L)
0115 840 4003
cldr.john.clarke@nottscc.gov.uk

Carlton West

Jim Creamer (L)
07886 6269087
cldr.jim.creamer@nottscc.gov.uk



Darrell Pulk (L)
07967 690828
cldr.darrell.pulk@nottscc.gov.uk

Newstead

Chris Barnfather (C)
01623 436995
cldr.chris.barnfather@nottscc.gov.uk

MANSFIELD**Mansfield East**

Alan Bell (L)
07594 237741
cldr.alan.bell@nottscc.gov.uk



Colleen Harwood (L)
07539 497492
cldr.colleen.harwood@nottscc.gov.uk

Mansfield North

Joyce Bosnjak (L)
07740 845737
cldr.joyce.bosnjak@nottscc.gov.uk



Parry Tsimbiridis (L)
07816 187028
cldr.parry.tsimbiridis@nottscc.gov.uk

Mansfield South

Andy Sissons (MIF)
07784 988199
cldr.andy.sissons@nottscc.gov.uk



Stephen Garner (MIF)
01623 634243
cldr.stephen.garner@nottscc.gov.uk

Mansfield West

Darren Langton (L)
07917 751980
cldr.darren.langton@nottscc.gov.uk



Diana Meale (L)
07771 764866
cldr.diana.meale@nottscc.gov.uk

Warsop

John Allin (L)
01623 843391
cldr.john.allin@nottscc.gov.uk

NEWARK & SHERWOOD**Balderton**

Keith Walker (C)
01636 703069
cldr.keith.walker@nottscc.gov.uk

Blidworth

Yvonne Woodhead (L)
01623 796751
cldr.yvonne.woodhead@nottscc.gov.uk

Collingham

Maureen Dobson (Ind)
01636 892267
cldr.maureen.dobson@nottscc.gov.uk

Farndon and Muskham

Mrs Sue Saddington (C)
01636 704550
cldr.susan.saddington@nottscc.gov.uk

Farnsfield and Lowdham

Roger Jackson (C)
0115 966 3970
cldr.roger.jackson@nottscc.gov.uk

Newark East

Stuart Wallace (C)
01636 677145
cldr.stuart.wallace@nottscc.gov.uk

Newark West

Tony Roberts MBE (C)
01636 681222
cldr.tony.roberts@nottscc.gov.uk

Ollerton

Mike Pringle (L)
07710 652406
cldr.mike.pringle@nottscc.gov.uk

Rufford

John Peck JP (L)
07748 181719
cldr.john.peck@nottscc.gov.uk

Southwell and Caunton

Bruce Laughton (C)
01623 822536
cldr.bruce.laughton@nottscc.gov.uk

RUSHCLIFFE**Bingham**

Martin Suthers OBE (C)
01636 525554
cldr.martin.suthers@nottscc.gov.uk

Cotgrave

Richard Butler (C)
0115 989 2504
cldr.richard.butler@nottscc.gov.uk

Keyworth

John Cottee (C)
07968 587204
cldr.john.cottee@nottscc.gov.uk

Radcliffe-on-Trent

Mrs Kay Cutts MBE (C)
0115 937 2495
cldr.kathrine.cutts@nottscc.gov.uk

Ruddington

Reg Adair (C)
0115 984 7412
cldr.reg.adair@nottscc.gov.uk

Soar Valley

Andrew Brown (C)
01509 820478
cldr.andrew1.brown@nottscc.gov.uk

West Bridgford Central and South

Steve Calvert (L)
0115 981 7696
cldr.steve.calvert@nottscc.gov.uk



Liz Plant (L)
0115 914 2356
cldr.liz.plant@nottscc.gov.uk

West Bridgford West

Gordon Wheeler (C)
0115 945 5701
cldr.gordon.wheeler@nottscc.gov.uk

Professional Interpreters Required

Are you a professional interpreter with experience of working within the public sector?
Are you passionate about providing excellent customer care?

Do you speak Albanian, Czech, Tigrigna, Twi or Yoruba?

If you answered 'Yes' to any of the above, apply now to join our professional interpreters register.
The Language Shop provides high quality interpreting services to the NHS, local authorities and other public sector organisations.

Please send your C.V to: bookingsnls@newham.gov.uk

We welcome applications for all languages particularly from interpreters that hold a DPSI qualification.



The Language Shop in partnership with Nottinghamshire County Council
☎ 020 3373 4000 🌐 www.languageshop.org



Think you need to see the doctor?
Surgery closed?
Call 111
- open 24 hours a day

The Emergency Department at the hospital is for real emergencies only - other expert NHS services are available and may be quicker for you.



To search for your local NHS services go to www.nhs.uk
Keep up-to-date with NHS news from across the South Notts area at:
www.facebook.com/NHSSouthNotts



FREE childcare places for two year olds*



nottsc.gov.uk/childcare
0300 500 80 80

*Worth up to £2,900 a year (check website for details)

Reader Survey



If possible please fill in this survey online at nottinghamshire.gov.uk/countylife - it'll be simpler for you and saves the Council money. If you need to return the survey by post send your completed form to:

FREEPOST RLUR-UXJJ-ETZZ (County Life readers' survey), County Hall, Loughborough Road, West Bridgford, Nottingham NG2 7QP. All completed forms must be submitted by **Friday 1 May 2015**. No stamp required.

Did you find this issue of County Life:

- Interesting
- Parts of it were of interest
- Not interesting

Do you like the look and layout of the magazine?

Yes No Don't know

Which features do you like?

- What's On pages
Yes No Don't know
- Your Council Tax
Yes No Don't know
- News
Yes No Don't know
- Stories about real people
Yes No Don't know
- Competition / prize draw
Yes No Don't know

What else would you like to see?

What would you like to see less of?

In the future would you prefer to read County Life online?

Yes No

Did you know this publication was produced by Nottinghamshire County Council?

Yes No

Do you have any other comments on County Life?

The Council is committed to ensuring that our services are delivered fairly. To enable us to check that what we are providing is fair and effective, we would be grateful if you would answer the questions below.

What is your age?

Under 16 16-25 26-35
36-45 46-55 56-65 66+

Do you consider yourself to be disabled? Yes No

Are you Male Female

What is your ethnic origin?

White Black Asian
Chinese Mixed
Other (please specify) _____

What is your postcode?

Thank you for taking the time to complete this survey.



WIN tickets to



Newark Showground, Saturday 9 and Sunday 10 May 2015
Advance tickets £10, gate tickets £15, children go free. Free car parking. We have six pairs of tickets up for grabs!

A great, all weather family day out with something for everyone to enjoy. Visitors will be able to see spectacular displays on the ground and in the air; demonstrations of all kinds; lots of hands-on activities and the chance to see animals from huge bulls to tiny chicks. Foodies will love the Food Experience Marquee, headline attraction Broke FMX will thrill the crowds with their high adrenaline motocross stunts, whilst the remarkable falconry, gun dogs and birds of prey will be ready for action. Advance tickets available by contacting the Showground on 01636 705796 or online at nottinghamshirecountylife.com

Complete the survey above and your details below to be entered into the free prize draw to win tickets - you can enter online too.

Name
Address
Daytime phone
Email

Better Broadband for Nottinghamshire

Is your home one of the 39,000
that can now get fibre broadband?

Nottinghamshire County Council is working with BT to extend the fibre broadband network across the county. We're on track to reach 95% of homes and business across the county by the end of March 2016.

High speed

High speed fibre broadband can help you and your family do so much more online all at the same time.

• Surf • Talk • Share • Watch • Learn

Want it? Check it now!

Use our online postcode checker to see if your home or business is able to get fibre broadband at: nottinghamshire.gov.uk/betterbroadband

Talk to your Internet Service Provider

If you already have broadband, don't forget to talk to your existing Internet Service Provider to get a new, upgraded package. Special offers mean you may find you even save money with a better service!

For more information visit nottscc.gov.uk/betterbroadband or

 Like us on Facebook www.facebook.com/nottinghamshirebroadband

Talk to your
Internet Service Provider
about special offers on
high speed fibre broadband