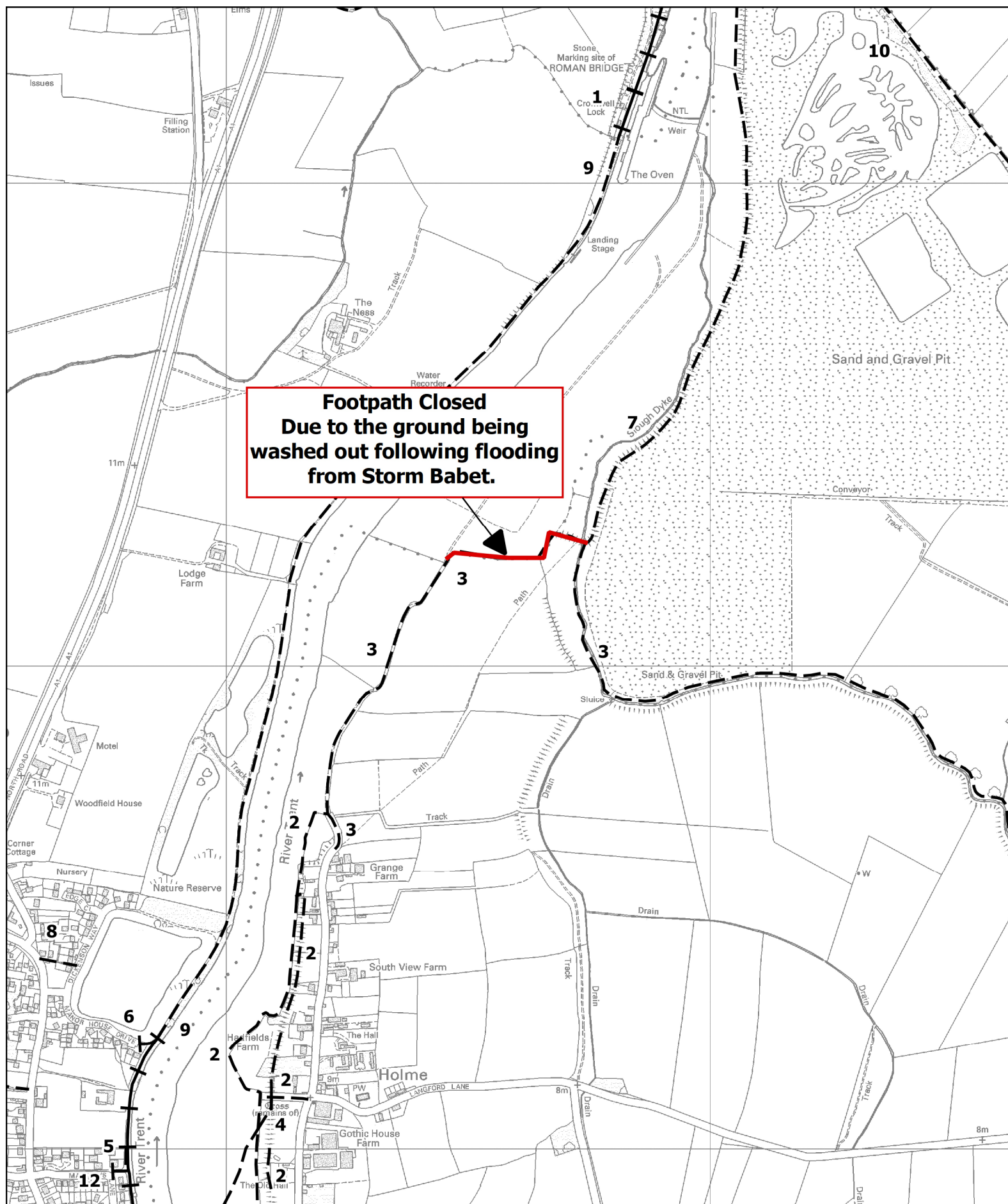


# EMERGENCY PATH CLOSURE



**Footpath Closed**  
**Due to the ground being**  
**washed out following flooding**  
**from Storm Babet.**



**Nottinghamshire**  
**County Council**

Compiled by:

Scale: 1:10000

Date: 02/11/2023

**Key**



PATH TO BE CLOSED 

ALTERNATIVE ROUTE 

This map is reproduced from Ordnance Survey materials with the permission of Ordnance Survey on behalf of the Controller of Her Majesty's Stationery Office. © Crown copyrights. Unauthorised reproduction infringes Crown Copyright and may lead to prosecution or civil proceedings. (Nottinghamshire County Council) (100019713), 2022