

East Nottinghamshire

- How do you think we should meet people's housing needs and where should new housing go?

Example: More new housing development could be provided in larger villages such as Tuxford or Collingham especially for local people who cannot afford housing on the open market rather than concentrating development in the market towns of Newark and Retford.

- Pros – More housing for local people especially the young.
May assist in helping to support local shops and services.
- Cons - More land needed for development within and around villages, possibly including open space or countryside
Could mean more journeys to work to nearby towns if people are not employed locally.

- Should more employment be provided in rural areas? What sort of jobs do you think should be provided and where?

Example: Employment sites could be provided within and adjoining certain villages

Pros – More locally based employment.

Cons – Sites will be needed within and adjacent to certain villages leading to the loss of open space and countryside.

Your Comments on the Issues

Your views are invited on these key issues together with an invitation to highlight issues not covered. You may also be interested in seeing the Issues Report itself - see overleaf.

Next Steps

The two Councils will consider all the views expressed during the consultation. A draft Plan will then be prepared during the autumn of this year and this will be published for further public comment early in 2003.

Looking further ahead, it is expected that a public inquiry (known as an Examination in Public) will be held in the autumn of 2003. Following any changes agreed after this public inquiry the two Councils will adopt the Plan in the autumn of 2004.



Further Information

- Exhibitions are planned at various locations. Look out for one in your local area.
- The Issues Report can also be viewed at local libraries.
- The Issues Report is on the County Council website at www.nottscc.gov.uk/structure_plan/index.htm and the City Council web site at www.plan4nottingham.com
- Copies of the Issues Document can be obtained from the County Council and the City Council by contacting the relevant address below:

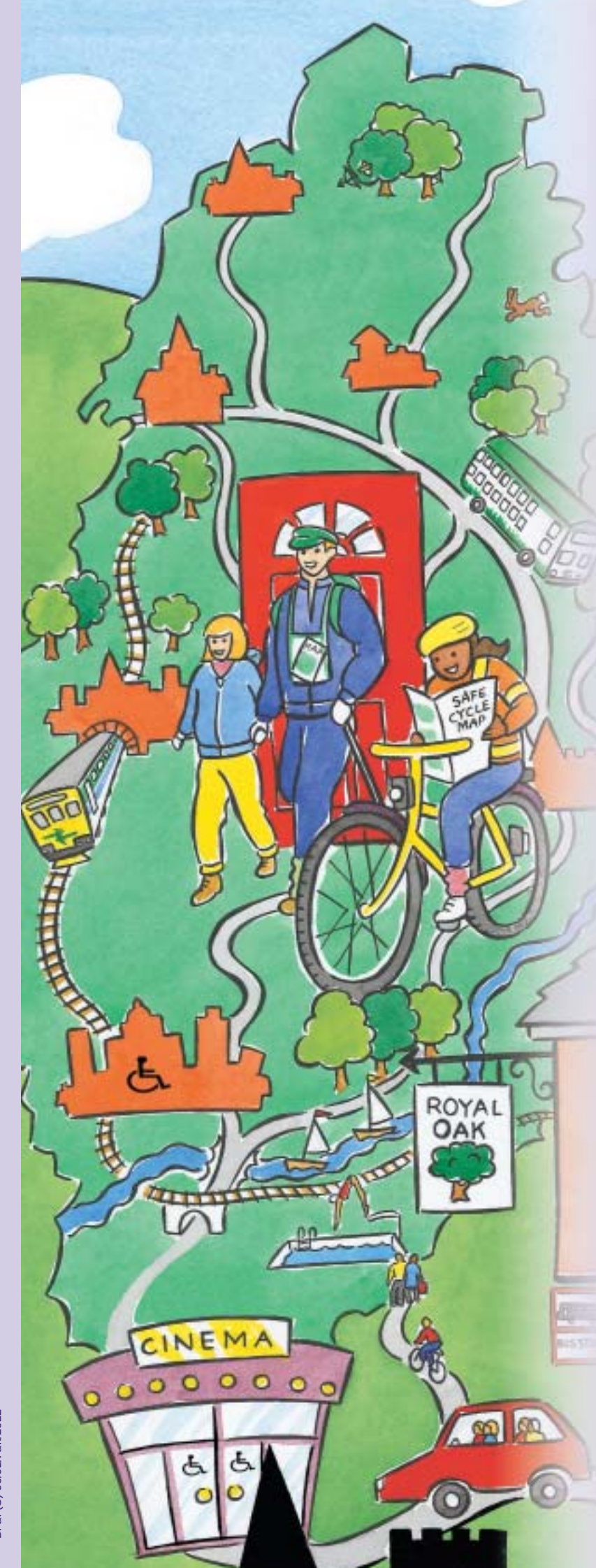
**Nottinghamshire County Council,
Regeneration Division,
Policy and Resources Department
County Hall
West Bridgford
Nottingham
NG2 7QP**

**Nottingham City Council
Development and Environmental Services
Nottingham City Council
Exchange Buildings North
Smithy Row
Nottingham
NG1 2BS**

Please let us have any comments you wish to make by **12th. August 2002** on the form provided.

You can talk to us at the County on (0115) 9774545 and ask to speak to anyone in the Planning Team or at the City on (0115) 9155208 to find out more information.

This document is available in alternative formats on request. Telephone either (0115) 9774545 or (0115) 9155208.



If you want to have your say in planning a sustainable future then you will be interested in this leaflet!

The Nottinghamshire and Nottingham Joint Structure Plan Issues Leaflet



Nottinghamshire County Council

Making Nottinghamshire and Nottingham an even better place to live, work and relax.

Introduction

In the year 2021....

It may seem a long time off but it is time to start planning for the changes that are likely to happen and will influence the way we live. These changes need to be planned for and managed so that Nottinghamshire and Nottingham are even better places to live, work and visit.

This leaflet summarises some of the key issues that will influence the future planning of the area. A more detailed Issues Report is also available. Please let us know what you think about the key issues affecting the future and whether you feel we might have missed anything important. If you would like to know more about the Issues Report there is further information on the back of this leaflet.

Your views will help shape a document called the Structure Plan.

What is a Structure Plan?

Structure Plans are an important way of achieving development (new housing, places of employment, shops etc.) that is sustainable, or put another way, development that ensures a better quality of life for everyone, now and for generations to come. Structure Plans cover County areas and look ahead over a long time period. They guide the broad amount and location of development ensuring that new development is co-ordinated with transport and other services. They provide the framework for more detailed local plans and so do not show actual sites.

It is time to replace the existing Structure Plan which was prepared in the early 1990s. It looks forward to 2011 and it is now time to roll it forward to cover the period up to 2021. We can then take into account new national and regional planning guidance. This new Plan is being prepared jointly by Nottinghamshire County Council and Nottingham City Council.

The current Structure Plan has tried to direct development to locations within and adjoining the main urban areas of Nottingham, Mansfield, Sutton-in-Ashfield, Kirkby-in-Ashfield, Newark, Worksop and Retford. The Plan has encouraged regeneration in the Coalfield area and within urban areas whilst generally restricting development in the countryside and the Nottingham Green Belt. It has protected important places like Sherwood Forest. It has also promoted the use of public transport and aimed to reduce the need to travel by car.

Change for the Better

The Structure Plan will therefore aim to meet local needs for housing, jobs and shopping while protecting and improving the environment. It might seem a tall order to achieve all of this, and inevitably there will be some tough choices ahead.

Some of the biggest issues to be faced will be in South Nottinghamshire, which has the biggest concentration of housing and jobs, with the City of Nottingham sometimes referred to as the "engine of growth for the County". How the Structure Plan harnesses the growth potential of the City for the benefit of everyone in the County will be fundamental.



Key facts and figures



- A further 9,000 houses need to be planned for by 2021.
- The Green Belt covers about 45,000 hectares which is about 21% of the Plan-Area.
- Population is likely to grow from 1,031,200 in 2000 to 1,067,000 in 2021.
- Unemployment is currently 3.9% compared to 3.3% nationally. In parts of Worksop and Mansfield unemployment is more than 7% and in parts of Nottingham over 10%.
- According to the 1991 census about one quarter of all journeys to work were made by train, bus, cycle or on foot in Greater Nottingham.
- More people work in services than any other type of employment (about 47%). About 18% are employed in manufacturing. In 1991 the figures were 37% and 22% respectively.
- Employment in manufacturing jobs is likely to fall further although this is likely to be more than offset by job growth in services. Much growth in service employment has taken place in and around Nottingham.
- Nottinghamshire now has 50% less ancient woodland and 90% less heathland than in the 1920s
- Nottingham City Centre has a catchment area of about 2 million people.
- There are 66 Sites of Special Scientific Interest covering over 3000 hectares.

Tough Choices

Plan Area

- Do you think that the South Nottinghamshire area can and should meet many of the job needs arising elsewhere in the Plan Area and can people living outside of the South Nottinghamshire area easily reach these jobs?

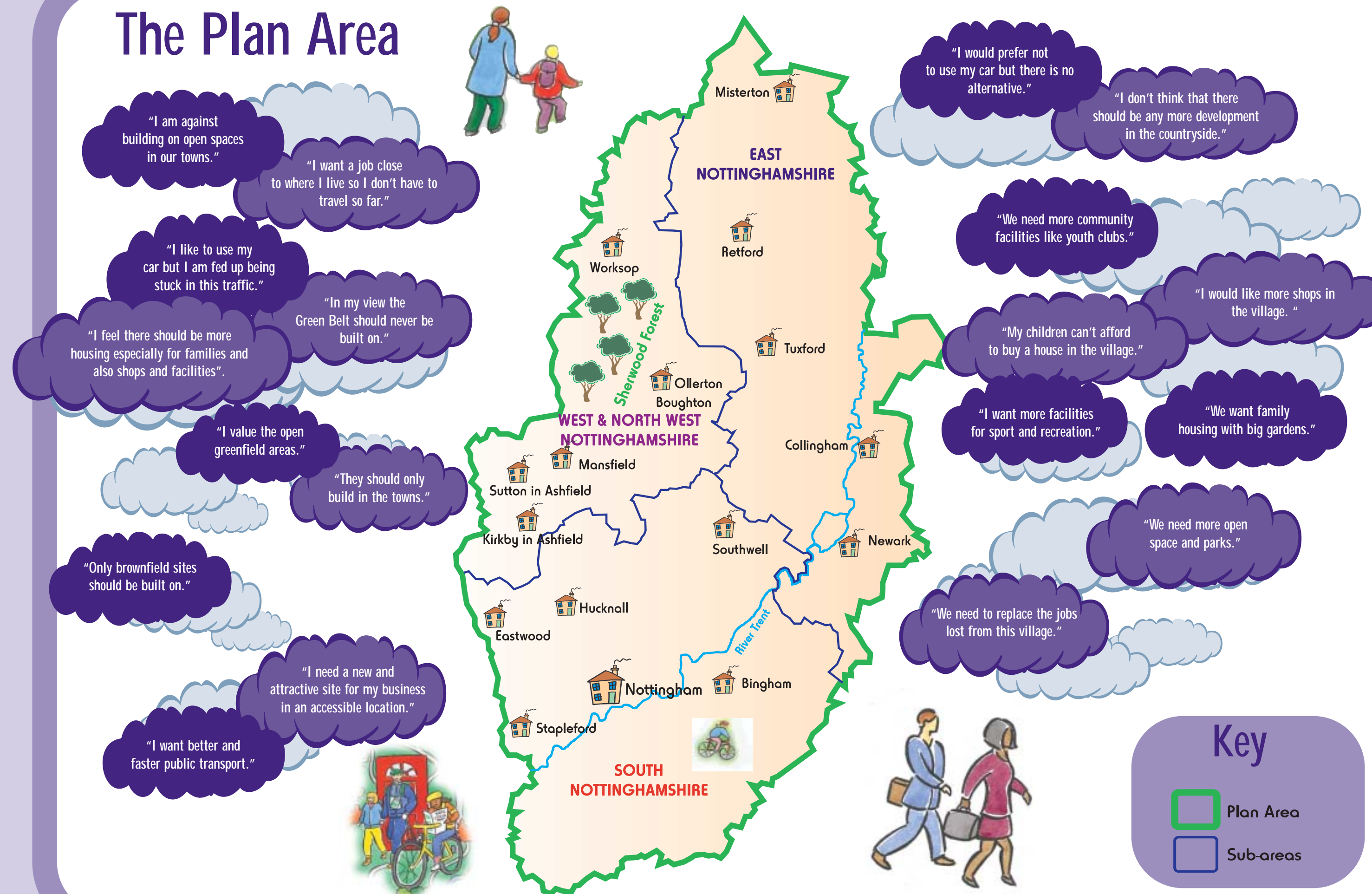
Example: Development could be distributed in such a way that would encourage most new jobs in South Nottinghamshire.

Pros - Encourage job growth.
Attractive to developers.
Build on the success of South Nottinghamshire.
Can be served by public transport.

Cons - More development land will be required including green field sites.
Housing pressures will increase.
May divert investment from sites elsewhere in the County.
People in the north of the County will have to travel further to work.
Will worsen traffic congestion unless public transport is improved.



The Plan Area



South Nottinghamshire

- Getting people in and out of Nottingham will be a major challenge. What do you think should be the priorities for transport to and from the City?

Example: Invest more in new public transport.

Pros - Cleaner, faster public transport will be better for the environment.
People without cars will benefit.
More people will be able to reach jobs, shops and services.

Cons - More restrictions on private car use.
More parking charges.



- How do you think the development needs arising from Nottingham and its suburbs should be met? Are there any circumstances where current Green belt land around Nottingham should be used for development?

Example: Some development could be located on the edge of Nottingham.

Pros - Less pressure to develop open space within the Nottingham urban area.
Can be well served by public transport.

Cons - Loss of Green Belt and countryside.
Could worsen traffic congestion if public transport is not improved.



West and North West Nottinghamshire

- What sort of new jobs do you want in this area and where should they go?
- To create new jobs some attractive greenfield sites may need to be used otherwise businesses may locate elsewhere or be lost to the area. Is this a price you think it is worth paying?
- Should there be more office type development in town centres such as Mansfield and Worksop?

Example: Making a wide range of sites available, including prime employment sites could be one approach.

Pros - More attractive to business leading to more and a greater variety of jobs.
May help counter people moving away for better jobs.

Cons - More greenfield land will be lost to development.
More use of cars and worse congestion.
Could discourage development from taking place in and around town centres.

