



Meeting	NOTTINGHAMSHIRE CHILDREN AND YOUNG PEOPLE'S PARTNERSHIP BOARD		
Date	9 March 2009	agenda item number	3

REPORT OF THE HEAD OF STRATEGIC PLANNING AND COMMISSIONING AND THE TEMPORARY LEAD OFFICER (CHILDREN AND YOUNG PEOPLE'S PLAN)

## **Nottinghamshire Children and Young People's Plan (2009-2011)**

### **Purpose of report**

1. This report provides information on the development of the new Children and Young People's Plan (CYPP) and seeks advice on the first draft of the plan.

### **Information and advice**

#### **Background**

2. The Children and Young People Plan (2009-2011) is being developed across the Nottinghamshire Children and Young People's Partnership, in line with statutory responsibilities from the Children Act 2004. There is a statutory requirement to publish a new CYPP within 6 weeks of the expiry of the previous plan. To meet this requirement, the new plan will be published by 16 May 2009.

#### Approach used to develop the new CYPP (2009-2011)

3. The new CYPP emphasises the importance of working to address inequalities, and the development of integrated working to support early intervention work. It is structured around 10 improvement priorities:
  - Protect the most vulnerable children and young people, including reducing bullying amongst children and young people
  - Raise standards and aspirations by focusing on improving educational attainment
  - Raise standards and aspirations by reducing the numbers of children and young people missing school

- Increase the numbers of young people in Education, Employment, and Training (EET), especially from vulnerable groups
  - Increase children and young people's participation in positive activities
  - Reduce crime and the fear of crime amongst children and young people
  - Reduce the negative impact of drugs, alcohol and smoking on children and young people
  - Improve emotional well-being amongst children and young people
  - Prevent and tackle rising levels of obesity amongst children and young people.
  - Improve sexual health amongst children and young people, including reducing teenage pregnancy.
4. The development of the CYPP has been overseen by a multi-agency planning group and taken forward by a development team. In deciding upon these improvement priorities, the CYPP planning group took note of what children, young people and families had told us as part of the review of the previous plan. We also used the outcomes of our Partnership practitioners' conference in October, along with performance data and information from national research and guidance.
5. For each of the improvement priorities, strategic and operational leads have been identified to develop action plans to address how, as a Partnership, we can work to improve outcomes for children, young people and families. (See Appendix 1 for a list of leads)
6. The plan will be constructed in layers. The first layer is an overview document. It will be made available as a print copy, intended for wide distribution to managers within the Partnership. It will also be published on the NCC web-site. It will be written in plain English, so that it is also accessible to parents and young people, or to members of the public. It is expected that this document will be 40 pages maximum. This layer will include:
- Explanation of why we have a plan,
  - Context – explanation of how the plan was developed,
  - Priorities for action, including 10 priorities that identify desired outcomes for children and young people and families, plus key work areas where we deliver services in partnership,
  - High-level summary of action planned to achieve priorities,
  - High-level summary of performance management and review arrangements for the plan.

The second layer will contain more detail and will be available on the website only. It will be aimed at practitioners and will contain:

- Detail on why priorities for action were chosen, including cross-references to the LAA and other Nottinghamshire strategies, performance data and joint needs analysis, and inspection reports, along with national requirements and guidance,

- Detail on action required to achieve priorities, including how they will be monitored and reviewed,
- Detailed performance management and review arrangements for the plan,
- Links to other strategies that relate to children, young people and families.

There will also be a 'quick read' version of the plan, available in print format (about 6 pages), and on the web-site. This will be the means of communicating the plan and our Partnership priorities to a wide audience.

### Consultation on the CYP Plan 2009-11

7. A consultation draft has been produced. This has been sent to partner organisations for formal consultation between 29 January and 31 March 2009, as detailed in legislation. This draft will eventually become the high-level overview document (or 'layer 1') of the plan.
8. During this consultation period, other key consultation activities are taking place:
  - 7 district workforce conferences,
  - Focus groups consulting with children, young people and families,
  - Public consultation: comments invited through Partnership website,
  - Consultation through partnership strategic groups.

Work is also taking place to take account of key national and local drivers and strategies. New national Children and Young People's Plan Guidance was published in January 2009, and the plan is being reviewed to ensure that it meets this new guidance.

9. This consultation process seeks the views of partners and stakeholders at a formative stage, enabling them to influence the final version of the plan. An updated final draft of the plan will be produced by mid-April, taking account of consultation feedback. This timescale allows for final collation and printing, ensuring that the CYP Plan is ready for publication by the required date of 16 May 2009.

See Appendix 2 for a summary of the consultation process.

A copy of the draft Children and Young People's Plan 2009-11 is attached.

### **Summary and questions for the board**

10. The views of the Board on the content of the first draft of the plan are sought. Feedback in response to the following key questions would be particularly valuable to the CYP Plan Team:
  - Does the draft document make clear the purpose of our Children and Young People's Plan?
  - Do you agree with the ten priorities we have set out for improving the life chances of the children and young people of

Nottinghamshire, and the way in which these priorities are described?

- Do you have any views on what we could do towards achieving these 10 priorities?

11. The Board is asked to comment on how it would like to contribute views on the content of the final draft of the CYYP, which will be produced by mid-April 2009. In view of the production timescale, it is suggested that Board members provide their views by correspondence during April. Following the publication of the plan on 16 May 2009, there will be work to further develop the processes for review and performance management of the CYPP; this work can be presented to a later meeting of the Board if requested.

## **RECOMMENDATIONS**

It is recommended that:

- (1) The Board provides advice on the content of the first draft of the Children and Young People Plan (2009-2011),
- (2) The Board confirms arrangements for contributing views on the final version of the Plan.

LES COWLING  
Head of Strategic Planning  
and Commissioning

MAGGIE PAPE  
Temporary Lead Officer,  
Children and Young People's Plan

Children & Young People's Services, Nottinghamshire County Council

## APPENDIX 1: list of priority improvement leads

### 10 Improvement Priorities and Leads

<b>PRIORITY</b>	<b>STRATEGIC LEAD</b>	<b>STRATEGIC GROUP</b>	<b>OPERATIONAL LEAD</b>	<b>CYPP GROUP MEMBER SUPPORT</b>
	Overall accountable lead. Required for final approval and sign off of specific templates.	Overall responsibility for achievement of the improvement priority. These groups will oversee and own activity included in the CYPP	Completes priority template, gets sign off from strategic group and lead. Facilitates (or delegates facilitation) at district level events	1 <sup>st</sup> point of contact for support to complete templates, back up support at district events
<b>Prevent and tackle the rising levels of obesity amongst children and young people.</b>	Barbara Brady	Tackling Obesity Strategic Group	Fiona Callaghan	Irene Kakoullis & Julie Meldrum
<b>Improve sexual health amongst young people including reducing teenage pregnancies</b>	Rob Skelton and Barbara Brady	Teenage Pregnancy Partnership Board and Sexual Health Strategic Group	Jackie Ward & Tracy Burton	Irene Kakoullis & Julie Meldrum
<b>Improving emotional well being amongst children and young people</b>	Helen Ryan and Chris Kenny	CAMHS Board NI50 Emotional Well Being Sub Group	Sally Handley	Irene Kakoullis & Julie Meldrum
<b>Reduce the negative impact of drugs, alcohol and smoking on children and young people.</b>	Kate Davis & Steve Edwards	Joint Commissioning Group for YP's substance use	Claire Baker	Irene Kakoullis & Jude Bowler

<b>Protect the most vulnerable children and young people</b>	Helen Ryan & Pam Rosseter	Nottinghamshire Safeguarding Children Board	Joe Foley & Pam Rosseter	Nick McMullen
<b>Raise standards and aspirations by focusing on improving educational attainment.</b>	John Slater		John Dryden & Anne Allsop	Anne Allsop
<b>Raise standards and aspirations by reducing the numbers of children and young people missing school.</b>	Rob Skelton	Behaviour and Attendance Strategy Group	Rob Lancaster and John Bradley	Rob Lancaster
<b>Increase children and young people's participation in positive activities.</b>	Rob Skelton & John Slater	Integrated Youth Support Development Board & ?	Derek Higton and John Thorn	Derek Higton and John Thorn
<b>Reduce crime and the fear of crime amongst children and young people.</b>	Rob Skelton		Lawrence Jones	Wes McDonald
<b>Increase the numbers of young people in Education, Training and Employment, especially from vulnerable groups</b>	John Endersby		Chris Jones & Denis McCarthy	Chris Jones

**Leads to for arrangements for working together:**

	<b>STRATEGIC LEAD</b>	<b>STRATEGIC GROUP</b>	<b>OPERATIONAL LEAD</b>	<b>CYPP GROUP MEMBER SUPPORT</b>
<b>PRIORITY</b>	Overall accountable lead. Required for final approval and sign off of specific information.	Overall responsibility for achievement of this work area	Works with CYPP lead to produce detail	1 <sup>st</sup> point of contact for support to complete templates, back up support at district events
<b>Early intervention and prevention</b>	Rob Skelton and John Slater		John Thorn, Gill Thackrey, Derek Higton	Maggie Pape Jo Mathieson
<b>Integrated Services</b>	Steve Edwards		Maggie Pape	Maggie Pape Jo Mathieson
<b>Parenting Support Strategy</b>	Steve Edwards		Nicola Turner	Maggie Pape Jo Mathieson
<b>Workforce Development</b>	Steve Edwards		Helen Richardson	Maggie Pape Jo Mathieson
<b>Planning, commissioning and resourcing services</b>	Steve Edwards		Les Cowling	Maggie Pape Jo Mathieson
<b>Working together to safeguard children</b>	Helen Ryan		Pam Rosseter and Joe Foley	Maggie Pape Jo Mathieson
<b>Services to children and young people with more complex needs and disabilities</b>	Rob Skelton		Chris Harrison	Maggie Pape Jo Mathieson
<b>Health Inequalities</b>			Irene Kakoullis	

## **APPENDIX 2: Consultation Process**

The *Children and Young People's Plan regulations (2005)* require local authorities to consult with the following organisations during the preparation of each plan:

### Relevant partners under Section 10 of the Children Act 2004

- (a) The district council in two tier authorities;
- (b) The police authority and the chief of police for any police area any part of which falls with the local area of the authority;
- (c) A local probation board for an area, any part of which falls within the local area of the authority;
- (d) Youth Offending Team;
- (e) Strategic Health Authority and Primary Care Trusts;
- (f) Agencies providing services under Section 114 of the Learning and Skills Act 2000 i.e. the local Connexions partnership;
- (g) The Learning and Skills Council.

### In addition, regulations require the local authority to consult with:

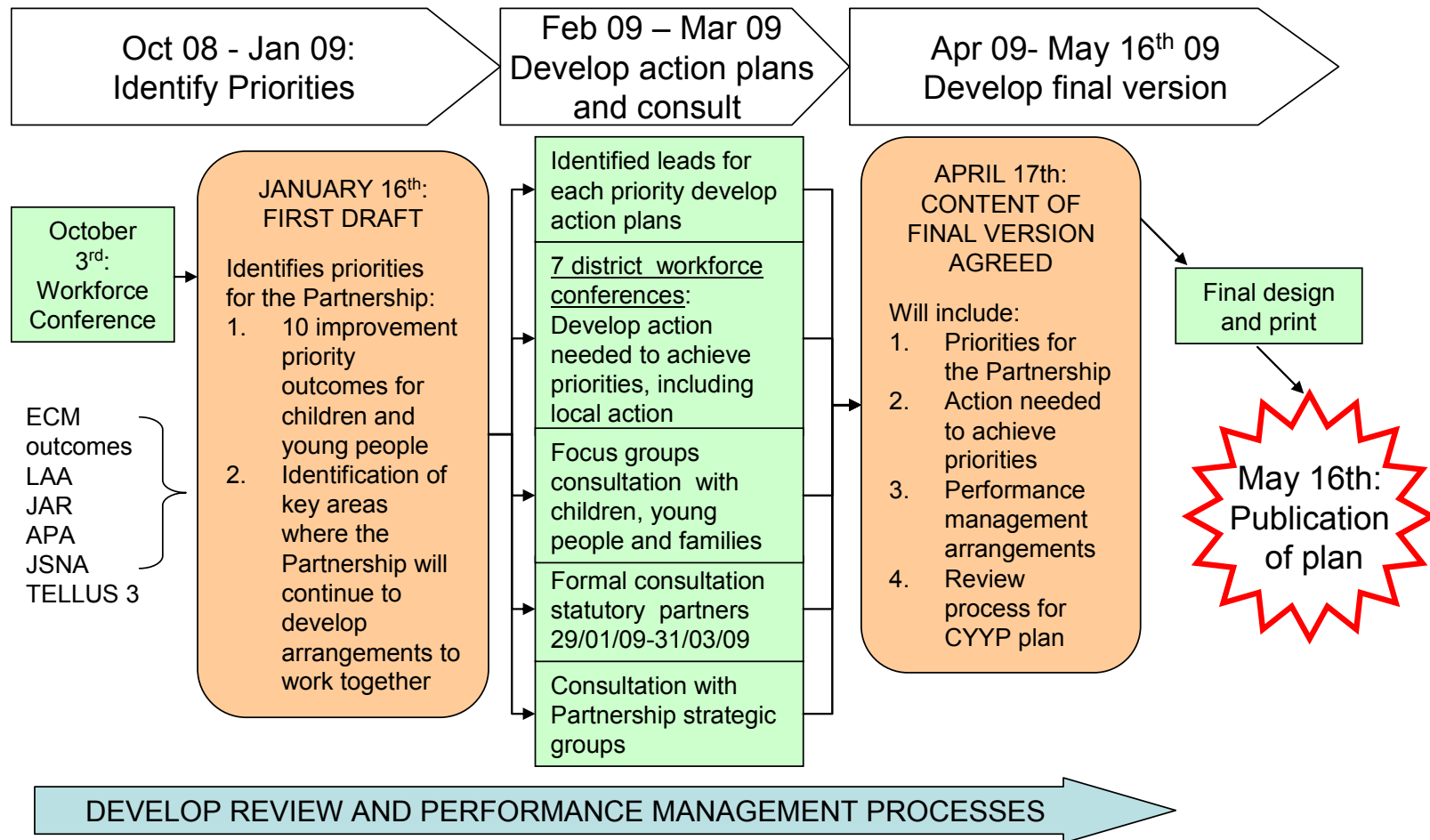
- (a) children, young people and families(including persons with parental responsibility or who have care of children) as the authority consider appropriate;
- (b) persons or bodies representing children, young people and families as the authority consider appropriate;
- (c) the appropriate diocesan authority for any foundation or voluntary school situated in the authorities area which is a Church of England or Roman Catholic Church school;
- (d) voluntary service providers;
- (e) representatives of local communities as the authority consider appropriate;
- (f) the Local Safeguarding Children Board; and
- (g) each of the authority's relevant partners as appropriate.

*The Children and Young People's Plan (Amendment) Regulations 2007* add

- (i) the proprietor of every school in the authority's area;
- (j) the schools forum for the authority's area; and
- (k) the admission forum for the authority's area.".

## APPENDIX 2: Consultation Process

### Timeline for Production of Children and Young People's Plan 2009-11



**OUR VISION:**

We will work together to provide integrated services for all children and young people in Nottinghamshire to improve their life chances and to help them maximise their potential

**Nottinghamshire  
Children and Young People's Partnership**

**DRAFT  
Children and Young People's Plan 2009-2011**

**CONTENTS**

**SECTION 1: INTRODUCTION**

- Working together for children and young people
- What is included in our Children and Young People's Plan?
- How does our Children and Young People's Plan relate to other strategies and plans in Nottinghamshire?
- How was our Children and Young People's Plan developed?
- How are children, young people and families involved in the development of our Children and Young People's Plan?

**SECTION 2: OUR IMPROVEMENT PRIORITIES**

- What are our improvement priorities for Nottinghamshire?
- What will we do to achieve our improvement priorities?

**SECTION 3: DELIVERING SERVICES IN PARTNERSHIP**

- Why do we need to deliver services in partnership?
- How we are developing our partnership working
  1. Early intervention and prevention work
  2. Integration of services
  3. Parenting Support
  4. Health Inequalities Strategy
- How we work together to keep children safe
- How we can further develop our services to allow us to work in partnership
  1. Develop our workforce so that staff have the skills and competences to deliver services in an integrated way
  2. Develop partnership approaches to planning, commissioning and resourcing services

**SECTION 4: OUR ACTION PLANS**

1. Improvement priority outcome action plans

2. Partnership working action plans
3. Action plan for workforce development
4. Description of our planning, commissioning and reviewing of service delivery including how we make resources available to deliver work in partnership

## **SECTION 5: HOW WE WILL MEASURE AND REVIEW OUR PROGRESS**

## **OUR VISION:**

**We will work together to provide integrated services for all children and young people in Nottinghamshire to improve their life chances and to help them maximise their potential**

## **SECTION 1: INTRODUCTION**

### **Working together for children and young people**

Our Children and Young People's Partnership\* is committed to improving the lives of children and young people by ensuring that Nottinghamshire is a place where they can all achieve their full potential. As a Partnership, we have a vision for how we want to work with children and young people. Our Children and Young People's Plan (2009-2011) describes what we will do to turn this vision into reality.

The Plan describes how we will plan our work around all five of the outcomes for young people set out in the Children Act (2004):

- Being healthy - physical and mental and emotional well-being,
- Staying safe - protection from harm and neglect,
- Enjoying and achieving - education, training and recreation,
- Making a positive contribution - the contribution made by them to society,
- Achieving economic well-being - social and economic well-being.

Our Children and Young People's Plan is the foundation of our shared planning to continue improving how we work together. We have developed it alongside the Nottinghamshire Sustainable Community Strategy 2009-2026. We know that children, young people and their families are more likely to do well if they are at the centre of our economic, environmental and social ambitions for Nottinghamshire. All our services need to think about children and young people, including services working with adults who may be parents.

We want all children and young people to achieve their full potential but we also want to narrow the gap between those who progress well and those who do not. To do this, we will focus on improving the lives of children and young people who are likely to face more difficulties. This includes:

- children and young people with disabilities,
- children from Black and Ethnic minority backgrounds,
- children and young people affected by loss, neglect or abuse,
- children and young people in families who are held back by poverty.

Our Plan is for all services working to improve the life chances of children and young people. In partnership, we have made significant progress over the lifetime of our previous Plan but we recognise that we have more to do. To make this happen, we have agreed ten key priorities for improvement for the next two years. Our Plan describes how we will work together to achieve these. We know that to improve the life chances of children and young people, we need to support whole families. Our Plan describes how we will work with parents and carers, and how we will offer support to children, young

\* Nottinghamshire Children and Young People's Partnership is made up of organisations that work with children, young people and families. It is the name that we use in Nottinghamshire to describe our Children's Trust.

people and families as soon as they experience difficulties in their lives. It also describes how we will develop the skills and knowledge of our workforce – the people who work with children or young people.

## What is included in our Children and Young People’s Plan?

Our Children and Young People’s Plan describes how the members of the Nottinghamshire Children and Young People’s Partnership will work together to improve the lives of children and young people in Nottinghamshire.

This Plan sets out our strategy for the next two years, from May 2009 to March 2011. By strategy, we mean:

- a description of our priorities - what we want to achieve,
- action plans describing what we will do to make this happen.

It also includes information about why we chose these priorities and describes how we will monitor our progress towards achieving them.

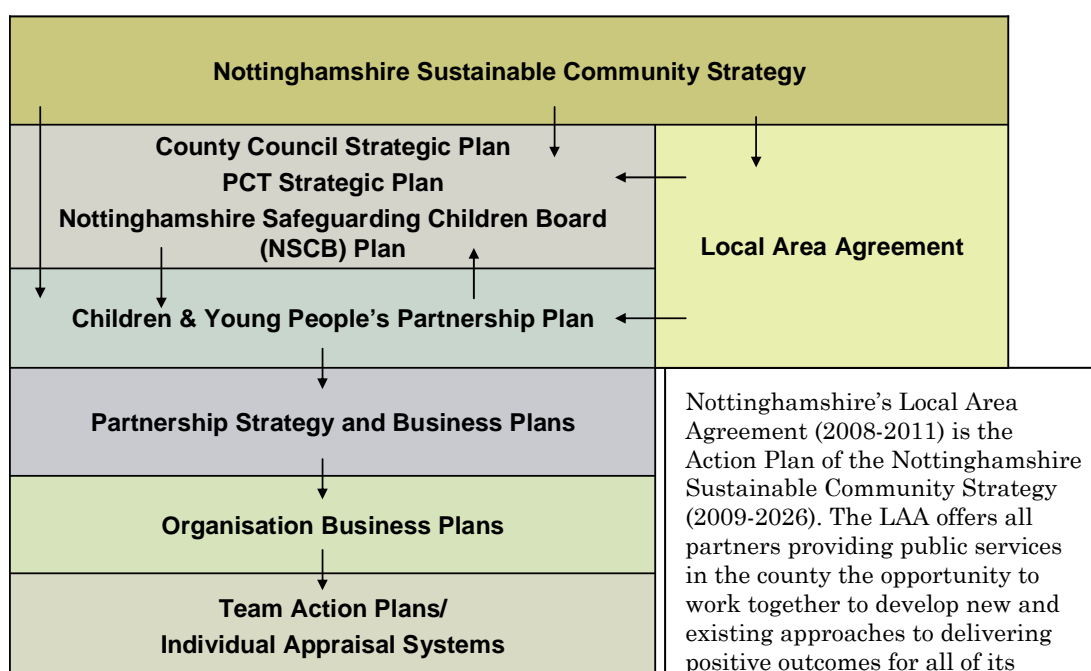
This plan covers the activities of a large number of organisations that provide services to children, young people and families. It is an overview of our improvement priorities and how we will work together to achieve them. As a result, a great deal of very important work that we do is not described in detail.

As well as this overview, we have more information available on our website. This includes:

- more explanation about why we chose our priorities for action
- detailed action plans for all our priorities,
- all our performance measures and review arrangements,
- links to other strategies and plans relating to children and young people.

## How does our Children and Young People’s Plan relate to other strategies and plans in Nottinghamshire?

The diagram shows our main strategies and plans, and how they are related.



There are a number of partnership strategies and plans for particular work areas that contribute to achieving our Children and Young People's Plan Priorities. These plans will be listed in later drafts of the plan.

### **How was our Children and Young People's Plan developed?**

We set up a working group with members from organisations within the Children and Young People's Partnership. This group coordinated the development of the plan, in three stages.

#### STAGE 1: Finding out more about what is happening now

We first needed to get a view of how we are doing as a Partnership, including the things that we do well and the things that we could do better. We used information about the lives of children and young people in Nottinghamshire and about how well our services support them. We also considered national Government requirements, including what we have to do by law.

<p><b>What information do we have about the lives of children and young people?</b></p>	<p>In April 2008, Nottinghamshire's <b>Joint Strategic Needs Assessment (JSNA)</b> was published by Nottinghamshire County Council and the two Primary Care Trusts that are responsible for health care in the county. This includes information about how well children and young people are doing in learning and about how healthy they are. It also includes information about how safe children are in Nottinghamshire, and information about those children and young people who get involved in criminal or anti-social behaviour.</p>
<p><b>How do we know what children, young people and families want?</b></p>	<p>The <b>TELLUS 3</b> survey was carried out nationally by OFSTED, using a sample of children in schools. It provides information about what children in Nottinghamshire think about their lives, and compares this to national averages.</p> <p>We have also carried out smaller, local surveys about the views of children, young people, parents and carers. We have consulted people about their views through focus groups and talking to individuals.</p>
<p><b>How do we know how well our services are doing?</b></p>	<p>In April 2008, OFSTED carried out a <b>Joint Area Review (JAR)</b>, which assessed our performance as a Children and Young People's Partnership.</p> <p>Every year, OFSTED carries out an <b>Annual Performance Assessment (APA)</b> of Nottinghamshire County Council's Children and Young People's Services. The most recent assessment was published in December 2008.</p> <p>In September 2008, our Children and Young People's Partnership carried out a <b>Review of our 2007-2009 Children and Young People's Plan</b> identified our progress and further action needed</p> <p>In October 2008, the Partnership produced a <b>JAR Improvement Plan</b>, identifying actions to be taken to improve our services.</p>

#### STAGE 2: Identifying our priorities – what we want to achieve

We used the information from stage 1 to help us decide our priorities. We also used the Local Area Agreement (LAA). This identifies priorities for the wider Nottinghamshire Partnership of all organisations working for the public. Seven of these priorities relate directly to children and young people and we used these to help us decide on priorities for this plan. We held a workforce conference in October 2008. Representatives from across our Partnership attended. Participants identified how we could work more closely together to deliver better services.

#### STAGE 3: Developing our action plans

The next stage was to decide on the action needed to achieve our priorities. We deliver services across seven districts in Nottinghamshire. We consulted with the workforce in each district to identify what we could do locally to achieve our priorities. We also talked to children, young people and families

about our priorities and our planned action. We used this information to produce action plans for what we need to do across the county, including local action in each district.

## **How are children, young people and families involved in the development of our Children and Young People's Plan?**

We are fully committed to the involvement of children, young people and families in the planning and delivery of our services. In developing our Plan, we have consulted with children, young people and families about what they want to see in it. We also asked them about how they want us to work with them in the future as we review our plan. We want to build on the work that we have done for this plan so that we can develop even better arrangements to allow children, young people and families to participate in the future development of the plan.

In deciding on our improvement priorities, we listened to what children, young people and families told us about what is important to them. We also needed to think about what performance data tells us about the lives of children and young people in Nottinghamshire, as well as national policies and guidance and information from research.

We have a participation work group, which is looking at ways to involve children, young people and families in this Plan. This group has organised a number of events for small groups of children, young people, parents and carers to take part in activities to provide us with their views. These groups have included children and young people of different ages, and in various life situations. We have worked with these groups to:

- get their views on our 10 improvement priorities for action,
- get ideas for action to achieve our priorities,
- find out how they want to be involved in the review of our plan.

This work is not meant to be a short-term activity. We intend to continue meeting with these groups as we put our Plan into action, and to work with them to review how effective it is.

We have put our draft version of the Plan on our Children and Young People's Partnership website. We asked for comments as part of our public consultation. We provided links to this consultation from websites aimed at children, young people, parents and carers, including Youth Zone and Parent Zone.

We will also be consulting with our Young People's Shadow Board about our Plan.

### **PLEASE NOTE:**

Some of the activities described in this section will take place in February/March 2009. This section will be amended for the final version of the plan. Full details of all consultation activities with children and young people will be included in the detailed supporting information that will be in the

Children and Young People's Plan area of the Children and Young People's Partnership website.

## SECTION 2: OUR IMPROVEMENT PRIORITIES

### What are our improvement priorities for Nottinghamshire?

Our plan is based around outcomes for children and young people. Outcomes are measurable improvements in their progress or life chances. We want all children and young people to achieve their full potential and progress as far as they can towards the Every Child Matters outcomes of:

- Being healthy,
- Staying safe,
- Enjoying and achieving,
- Making a positive contribution,
- Achieving economic well-being.

We have identified 10 priorities that we think we will help all children and young people to progress towards these outcomes. Our priorities are the changes that we believe would make the most difference to the life chances of the children and young people of Nottinghamshire. They are about helping all children and young people to achieve their full potential and also about narrowing the gap between those who progress well and those who do not.

<b>Our Improvement Priorities showing how they will help Nottinghamshire children and young people to achieve Every Child Matters outcomes</b>	<b>Be healthy</b>	<b>Stay safe</b>	<b>Enjoy &amp; achieve</b>	<b>Make a Positive</b>	<b>Achieve Economic</b>
Protect the most vulnerable children and young people	■	■	■	■	■
Raise standards and aspirations by focusing on improving educational attainment			■	■	■
Raise standards and aspirations by reducing the numbers of children and young people missing school		■	■	■	■
Increase the numbers of young people in Education, Employment, and Training (EET), especially from vulnerable groups			■	■	■
Increase children and young people's participation in positive activities		■	■	■	■
Reduce crime and the fear of crime amongst children and young people	■	■	■		
Reduce the negative impact of drugs, alcohol and smoking on children and young people	■	■	■		■
Improve emotional well-being amongst children and young people	■	■	■	■	■
Prevent and tackle rising levels of obesity amongst children and young people.	■	■	■		
Improve sexual health amongst children and young people, including reducing teenage pregnancy	■	■	■	■	■

## **What will we do to achieve our improvement priorities?**

We believe that to achieve these improvement priorities for all children and young people, we need to deliver high quality services to all children and to give extra support to those who face more difficulties in their lives. Information about Nottinghamshire shows that, in general, children and young people are progressing well, except that they do less well in GCSEs than children and young people in other areas of the country. However, this information also shows that there are large differences across Nottinghamshire. Children and young people in some areas do less well than in others, and some groups of children face particular difficulties. Children and young people in some areas of the county are much less likely to be healthy than in other areas. All of our priorities are about working to reduce inequalities. Some priorities focus on particular aspects of children's lives: for example, health inequalities or differences in how well children and young people are doing at school.

For each improvement priority, an action plan describes the improvements we want to make and what we will do to make them happen. This includes how we will work to improve the life chances of all children and young people and how we will help those children and young people who are less likely to do well. These are children and young people who:

- are in families on low incomes,
- are looked after by the local authority or who are affected by loss, neglect or abuse,
- have disabilities or learning difficulties,
- are from Black or Minority Ethnic backgrounds. \*

We know that when children and young people are not achieving their potential, it is often because they face difficulties in many areas of their lives. They may need support from several different organisations. To make sure that we achieve our improvement priorities, our organisations will need to work in partnership. We are already developing our partnership working in many ways. The next section describes these in more detail.

### **\* How do we know which children and young people are likely to need more support?**

Our Joint Strategic Needs Analysis (JSNA) shows that children and young people do less well, on average, in areas of socioeconomic deprivation. These are areas where there are a high proportion of families on low incomes and where family members are less likely to be employed. Children in these families are more likely to have health problems. On average, they do less well in learning and are less likely to go into employment, training or further education when they leave school. Areas where we know there is more deprivation include many areas in Ashfield, Mansfield and Bassetlaw, and some areas in all other districts. We also know that there are some children and young people in families with low incomes who are living in areas where most people are relatively well-off.

We also know that children who are looked after by the local authority may do less well, on average. We know that children and young people with disabilities or learning difficulties may face particular problems. There is evidence that Black and Minority Ethnic children may do less well than children from White British backgrounds. We know this from national research and from the information that we collect in Nottinghamshire.

## **SECTION 3: DELIVERING SERVICES IN PARTNERSHIP**

### **Why do we need to deliver services in partnership?**

We already have a number of key initiatives which are about working in partnership to deliver services in an integrated way. We know we need to do this because children, young people and families tell us that they want us to coordinate our services. National and local research shows that to keep children safe and to improve their well-being, we need to work together.

We will continue to develop these initiatives to deliver services in partnership. By doing this, we will be best placed to work together to achieve our 10 improvement priorities and to improve the life chances of all children in Nottinghamshire.

### **How we are developing our partnership working**

Our development work is made up of four key initiatives, which are described here. These initiatives are inter-related - we are only able to achieve each of them by working on all of them.

#### **1. Early intervention and prevention work**

This means working to help all children and young people to learn the skills they need to cope with life. It also means providing support to children, young people and families as soon as we realise they are experiencing difficulties, not waiting until situations get worse. It means working with families in communities, so they can get support when and where they need it. It includes three key work areas:

- Children's Centres Partnerships, supporting children and their families, in the early years of children's lives, pre-birth to age 5,
- Extended Services in and around schools. Schools are at the heart of their communities, so are ideally placed to provide access to a range of opportunities, activities and support,
- Youth Matters, including providing young people with: more things to do and places to go in their local area, more opportunities to volunteer and to make a contribution to their local community, better information, advice and guidance and better support when they need extra help to deal with problems.

#### **2. Integration of services**

This is about coordinating the services that we deliver to children, young people and families. This is especially important for families who need extra support and who may be getting help from a number of different organisations. In Nottinghamshire, we are coordinating our services using Joint Access Teams (JATs). JATs are based around clusters of schools, usually a secondary school and linked primary schools. JATs provide direct support to families, and provide advice to workers about how to support families. If a child or young person has several support workers, one may act as a lead professional to coordinate the support offered.

#### **3. Parenting Support**

Parents, carers and families are the most important influence on how well children and young people do. We need to provide coordinated support to

parents, from birth right through to the teenage years. We are developing a joined-up approach to the design and delivery of our parenting support services through the Nottinghamshire Parenting Support Strategy.

#### 4. Health Inequalities Strategy

We know that in Nottinghamshire, some children and young people have healthier lives than others. We know that in some areas of Nottinghamshire, there are higher numbers of people who are not in good health. Our Joint Strategic Needs Assessment (JSNA) tells us about those children and young people who may need more support to live healthier lives. The Joint Area Review (JAR) of our Partnership services said that we need to do more work on reducing health inequalities. We are developing a Health Inequalities Strategy that will describe how we will work in partnership to reduce health inequalities.

#### **How we work together to keep children safe**

The first of our 10 improvement priorities is to 'Protect the most Vulnerable Children and Young People'. The Joint Area Review (JAR) inspection of our services found that we have good arrangements in place to safeguard children and promote their welfare. Our improvement priority is about making sure that these continue and that we also focus our efforts towards those children we see as particularly vulnerable. At the time of writing we are awaiting the report from Lord Laming of his review of safeguarding arrangements in England and we will clearly need to respond to all relevant recommendation from this.

Nottinghamshire Safeguarding Children Board (NSCB) has the key role in this area .\* Our action plans section describes how our local organisations will work together through the NSCB and the wider partnership to safeguard children and young people.

#### **\* What is the Nottinghamshire Safeguarding Children Board (NSCB)?**

Nottinghamshire Safeguarding Children Board (NSCB) was established as statutory body by the Children Act 2004. The Board is the key statutory mechanism for agreeing how partners in Nottinghamshire will co-operate to safeguard and promote the welfare of children and ensure the effectiveness of what they do.

The NSCB brings together senior representatives from agencies, statutory and voluntary, responsible for delivering services to children and their families. This includes services to adults who may be parents. All of these agencies have a duty to safeguard and promote the welfare of children in the work they do. It is the responsibility of the NSCB to ensure that they meet this responsibility.

The NSCB works closely with other partnerships in Nottinghamshire and in particular with the Children's Trust. The Board will take a specific responsibility to ensure that the safeguarding needs of children and young people in Nottinghamshire are met through the effective implementation of the Children and Young People's Plan.

Further details of the work of the NSCB can be found at:  
[www.nottinghamshire.gov.uk/nscb](http://www.nottinghamshire.gov.uk/nscb)

## **How we can further develop our services to allow us to work in partnership**

### 1. Develop our workforce so that staff have the skills and competences to deliver services in an integrated way

The children and young people's workforce includes anyone who works with children and young people and who makes a difference to their lives. National Government have published the 2020 Workforce Strategy. This has a vision for the workforce. This vision is that everyone working with children and young people should be:

- **Ambitious** for every child and young person,
- **Excellent** in their practice,
- **Committed** to partnership and integrated working,
- **Respected** and valued as professionals.

In Nottinghamshire, we share this vision. We want our workforce to be enthusiastic about working with children, young people and families. We will make every effort to give the people in our workforce the skills and knowledge to do the best job they can. We have developed an action plan for our workforce development. This will be described in more detail in the next section of our plan.

### 2. Develop partnership approaches to planning, commissioning and resourcing services

We will develop the content of this section during February and March 2009. It will provide an overview of how we intend to work together to further develop our arrangements for planning and commissioning, including joint commissioning of services.

## **SECTION 4: OUR ACTION PLANS**

The content of this section will be developed during February and March 2009. An important part of this work is consultation with the children and young people's workforce and with children, young people and families. Development work will also consider how we monitor our performance and how we will review it.

During February and March 2009, we will produce a series of action plans, one for each of the 10 priority outcomes identified and one for each of our partnership working initiatives. These will be included in the final version of this Plan. Supporting information on our website will contain more detailed information.

The key action plan headings and outline content are included here.

### **1. Improvement priority outcome action plans**

*For each of our 10 improvement priorities, there will be an overview action plan. This will be based around these headings.*

- **Improvement Priority**
- Why this priority matters
- What the local data tells us about this priority
- What this priority means for the 5 Every Child Matters Outcomes
- What we need to do to achieve this priority
- How we will know we have made a difference
- What we'll do in 2009-10 to achieve our outcomes
- What we'll do over the next 3 years to achieve our outcomes
- What we'll need to consider in 5 years time and beyond
- What children and young people say about this
- What parents and carers say about this
- What people who work with local children, young people and their families say about this
- What this means for equalities and diversity (this considers how people are affected according to their gender, race, age, disability, sexual orientation, values and beliefs and the effect on socially excluded groups)
- What this means for our workforce (people who work with children, young people and their families).

## **2. Partnership working action plans**

There will be an action plan for each of our four initiatives:

- Early intervention and prevention work
- Integration of services
- Parenting Support
- Health Inequalities Strategy

Each action plan will identify how we will develop the work that we do together and how we expect this to result in better outcomes for children and young people. It will show how we will monitor how effective our work is. We will do this by using performance data and by asking children, young people and families if our services are making a difference to their lives. The action plan included in each document will be an overview. Each of these work areas has strategies and plans which provide further detail and these will be available on our website.

## **3. Action plan for workforce development**

This will identify how we intend to develop our workforce and how we expect this to result in better outcomes for children and young people.

## **4. Description of our planning, commissioning and reviewing of service delivery, including how we make resources available to deliver work in partnership**

This section will be developed in more detail in February and March 2009. It will include information about our partnership approach to planning, including joint planning and commissioning proposals.

## **SECTION 5: HOW WE WILL MEASURE AND REVIEW OUR PROGRESS**

The content of this section will be developed during February and March 2009. This section will include our review process for our Children and Young People's Plan. This will include:

- how we measure, monitor and report on progress. This will be based as far as possible around the National Indicators. These are indicators of performance that national government has set up and which we are expected to use to measure our performance,
- review arrangements, to include processes, timelines and key responsibilities,
- an indication of how this plan relates to the commissioning of services.