



Nottinghamshire  
County Council

# Benefits at 16

## For Young People with Disabilities



April 2007

When you reach the age of 16 you will be treated as an adult by the Department for Work and Pensions and, because you have a disability, you may be able to claim Social Security benefits in your own right.

## Disability Living Allowance (DLA)

This is a benefit for people with disabilities who have needed help for three months and will require help for at least a further six months. Any other money you or your parent(s) or carers have coming in does not reduce your DLA.

It is made up of two parts:

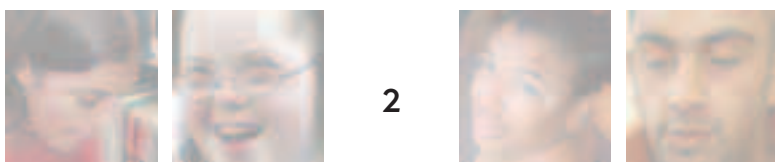
### Mobility Component

This is paid if you are unable to walk, or you have difficulty walking because of your disability. You can also get this benefit at a lower rate if you can walk but need someone with you to make sure you are safe or to help you find your way around unfamiliar places.

If you qualify for the high rate mobility component of the DLA you can have a drivers licence at 16 years old.

### Care Component

This is paid if you need help with personal care. Personal care includes, for example, washing, dressing, reading your



mail and using the toilet. If you require someone to be with you in order to prevent danger to yourself or to other people you will also qualify.

Even if you do not need help with personal care, a lower rate of Disability Living Allowance can be paid when you are aged 16 if you are not able to plan, prepare or cook a main meal for yourself.

**Remember:** If you already get Disability Living Allowance your award will automatically be looked at again by the Disability Benefits Unit before your 16th birthday.

To claim you need to contact the Benefits Enquiry Line for the **claim pack DLA1** – by telephoning free on **0800 882200**.

## Carers Allowance

This is a benefit paid to carers who are not in full-time education and earning less than £87 per week if they are working. They must be caring for someone who receives the Disability Living Allowance care component at the **higher or middle rate** and the care they give must be for 35 hours or more a week.

If your carer is claiming Income Support or Pension Credit the Carers Allowance will be taken into account as income for these benefits, but they will still be better off because they will get the 'carers premium' of £27.15 per week added to their Income Support or Pension Credit.

Carers Allowance is claimed on **form DS700**.

## Incapacity Benefit in Youth (IBY)

To qualify for IBY you must have been incapable of work for 28 continuous weeks. This period can begin before your 16th birthday while you are still at school.

Incapacity Benefit can be paid even if you are still in education provided you are studying part-time, or attending a special school or a mainstream school or college where the education is unsuitable for a person of the same age who does not have a disability.

If your parent(s) or carer are claiming Income Support, Pension Credit, income based Jobseeker's Allowance or Child Tax Credit, it is best to get advice before claiming as it could affect their benefits.

You will automatically be treated as incapable of work if you receive the highest care component of Disability Living Allowance, or have certain medical conditions. These include being registered blind, having a severe learning disability, being tetraplegic or paraplegic, or having a progressive muscular or neurological disease.

If none of these apply you will still be entitled if you satisfy the 'Personal Capability Assessment'. This involves having a medical examination to see if you are incapable of work.

Claim on **form IB(Y)1** with medical certificates from your doctor. The certificates should say that you have been unable to work for the 28 weeks before your claim and that you will remain incapable of work in the future.

It is possible to undertake some paid work whilst claiming IBY, but it is important to get advice first as the rules are complicated.

People claiming IBY may qualify for Income Support as well.

## Access to Work

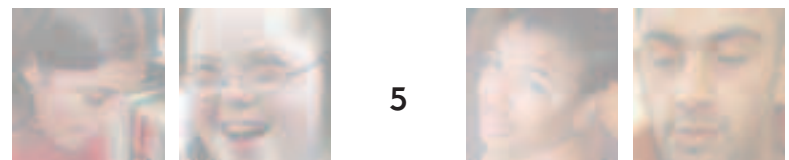
If you are starting work and need special equipment or adaptations in your workplace, ask your local JobcentrePlus office about the Access to Work scheme.

## Income Support

This is usually claimed from the age of 18 but you can claim at 16 if you are incapable of work because of your illness or disability. Income Support can be claimed on its own or as a 'top-up' to Incapacity Benefit in Youth, even if you stay on at school. Most income will be taken into account (except DLA) when being assessed for Income Support. You must also have less than £16,000 capital to qualify.

If your family are already getting Income Support, income-based Jobseeker's Allowance or Child Tax Credit, you need to get advice before claiming in your own right as this may adversely affect their benefits.

Claim on **form A1**, available from your local JobcentrePlus office. You will need to start your claim by telephone. The number to ring is **0845 600 4258**. If this is difficult for you because of your disability seek advice.



## Tax Credits

Working Tax Credit and Child Tax Credit are paid by the Revenue & Customs. You may be able to claim Working Tax Credit if you work for more than 16 hours a week and are, or have recently been, claiming a disability benefit. If you have a child you may be able to claim Child Tax Credit, regardless of whether you work or not.

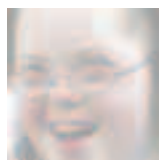
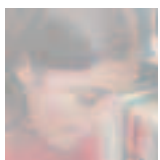
Both Tax Credits are claimed on **form TC600**. For a claim form, phone **0845 300 3900** (textphone - **0845 300 3909**) or visit the Revenue & Customs website [www.hmrc.gov.uk/taxcredits](http://www.hmrc.gov.uk/taxcredits)

## Leaving School

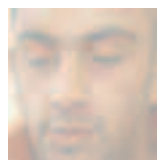
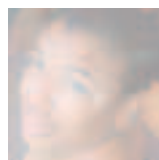
The benefits listed above may be affected when you leave school. How this happens will depend on what you do next – go to college, a day centre, youth training, a New Deal scheme, paid or voluntary work. It is important that you seek advice before you make a claim, to ensure you and your family claim all the benefits they are entitled to.

## Dealing with your money

If you are not able to handle your own financial affairs because of your disability, someone (usually the person who cares for you) will apply to the Department for Work and Pensions to become your official appointee.



6



## Other help available

### Free school meals

Claimed from your local Education office if you or your parent(s) are in receipt of Income Support, income-based Jobseeker's Allowance, or Child Tax Credit (but not Working Tax Credit) and have a gross income per year of less than £14,495. (Your Child Tax Credit Award letter will tell you your gross annual income).

Telephone **0845 330 4215** and ask for claim form **FSM1**.

### Education Maintenance Award (EMA)

Young people aged 16+ staying on in further education (sixth form and Further Education) and studying for a recognised qualification can apply for an EMA. Students have to sign a contract with the school or college and achieve attendance and progress targets. Students need to open a bank account (unless there are specific difficulties with this - e.g. if you have a learning disability).

EMAs are a term time weekly payment of £30, £20 or £10 depending on household income. There are also bonuses of £100 in January and July of the first year, and September and July of the second year, for attendance and progress.

Students whose household income is around £30,000 or below should qualify. Income is assessed in the same way as for Tax Credits. Tax Credit award notices should be accepted as proof of income.

7

EMAs will not be affected by your part time earnings and will not affect Child Benefit or any other benefits paid to your parents or carers.

From April 2006, the EMA is extended to young people on Learning and Skills Council funded E2E courses or taking a learning programme that leads to an apprenticeship.

For further information contact the EMA Capita Helpline number on **0808 101 6219**. You may also be able to get help with travel costs to school/college. Ask for more information from your local education office or email [travel.assistance@nottssc.gov.uk](mailto:travel.assistance@nottssc.gov.uk)

Application forms should be issued at school or colleges or you can download a form from the DfES website [www.dfes.gov.uk/ema](http://www.dfes.gov.uk/ema)

## Parking Badge

Also known as a "Blue Badge" this is a disabled parking permit issued by the County Councils Adult Social Care and Health Department. It can be claimed if:

- you receive the high rate mobility component of the DLA
- you are registered blind
- you have a permanent and substantial disability which results in you being unable to walk or have considerable difficulty in walking.

To apply telephone your local adult social care office:

Ashfield	0845 330 4256
Bassetlaw	(01777) 713800 - Retford (01909) 533713 - Worksop
Broxtowe	(0115) 917 5800
Gedling	(0115) 854 6000
Mansfield	0845 330 4256
Newark	(01636) 682700
Rushcliffe	(0115) 914 1500

## Special Access Scheme

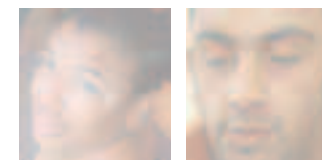
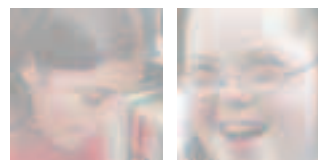
Allows you to park in restricted town centre parking zones. Permits are issued by the County Council.

Telephone **(01623) 443939** for an application form.

## Vehicle Excise Duty (Road Tax) exemption

To qualify you must receive the higher rate of the mobility component of the Disability Living Allowance.

Telephone **0845 712 3456** for details.



## Motability

A Government funded charity which helps people getting the higher rate of the mobility component of the Disability Living Allowance to purchase or lease a new or used car.

## Disabled Person's Railcard

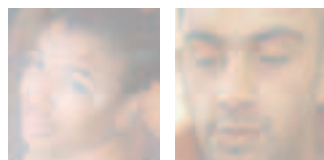
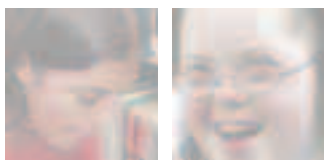
To qualify you must receive the middle or higher rate of the care component, or the mobility component of the Disability Living Allowance, or Incapacity Benefit in Youth, or be registered as visually impaired, or be deaf or have epilepsy. Contact your local mainline railway station for details.

## Health benefits

NHS dental treatment, prescriptions, fares to hospital, NHS sight tests and vouchers for spectacles are free until the age of 19 if you are in full-time education. People who have certain medical conditions can also get free prescriptions. They are also free if you are getting Income Support or a similarly low income.

Claim health benefits on **form HC1**.

Some people getting Child Tax Credit **or** both Child Tax Credit and Working Tax Credit can get free or reduced health charges. You will be sent an exemption certificate with your Tax Credit award letter if you qualify.



## Advice and information

This leaflet is only a brief guide to the benefits available for young people with disabilities. For further information contact:

Department for Work and Pensions enquiry line for people with disabilities

Telephone: **0800 882200**

Textphone: **0800 243355**

Nottinghamshire Welfare Rights Service (NWRS)

Telephone: **(0115) 977 4018**

Textphone: **(01623) 845017**

To find out where your local advice centre is located contact NWRS or visit our website: [www.nottinghamshire.gov.uk/benefitsadvice](http://www.nottinghamshire.gov.uk/benefitsadvice)

## Urdu

اگر آپ کو یہ اشاعت کسی دوسری صورت میں یا اس کا اردو میں  
ترجمہ چاہیے تو براہ مہربانی سروس انفورمیشن ٹیم سے رابطہ کیجئے۔

## Hindi

यदि आप इस प्रकाशन को किसी ओर रचना या हिन्दी  
भाषा में चाहते हैं तो कृपया सर्विस इन्फोरमेशन टीम  
को सम्पर्क करें

## Punjabi

ਜੇਕਰ ਤੁਸੀਂ ਇਸ ਪ੍ਰਕਾਸ਼ਨ ਨੂੰ ਕਿਸੀ ਹੋਰ ਰਚਨਾ ਜਾਂ ਪੰਜਾਬੀ ਭਾਸ਼ਾ  
ਵਿੱਚ ਚਾਹੁੰਦੇ ਹੋ ਤਾਂ ਕਿਰਪਾ ਕਰਕੇ ਸਰਵਿਸ ਇੰਫੋਰਮੇਸ਼ਨ ਟੀਮ ਨੂੰ  
ਸੰਪਰਕ ਕਰੋ।

Community  
Legal Service



Specialist Help  
Welfare Benefits

Contact us if you would like further copies of this  
publication, or you need the information in a  
different language or format:

Service Information Team, Adult Social Care and  
Health Department, County Hall, West Bridgford,  
Nottingham NG2 7QP

phone (0115) 977 4025

email [communications.ssd@nottsc.gov.uk](mailto:communications.ssd@nottsc.gov.uk)

website [www.nottinghamshire.gov.uk](http://www.nottinghamshire.gov.uk)

Published by Nottinghamshire County Council Adult Social Care and  
Health Department and Nottinghamshire Welfare Rights Service

Printed by Design, Publications & Print.

Design by Service Information Team

Photos from - [www.johnbirdsall.co.uk](http://www.johnbirdsall.co.uk) (posed by models)

- [www.photolibrary.nhs.uk](http://www.photolibrary.nhs.uk)

Ref: SSCU/019e/04.07



INVESTOR IN PEOPLE



2005-2006  
Sustainable Energy  
2006-2007  
Culture and Sport for  
Hard to Reach Groups