

**SUMMONS TO COUNCIL**

date Thursday, 26 November 2015 venue County Hall, West Bridgford,  
**commencing at 10:30** Nottingham

You are hereby requested to attend the above Meeting to be held at the time/place and on the date mentioned above for the purpose of transacting the business on the Agenda as under.



Chief Executive

- |           |  |         |
|-----------|--|---------|
| <b>1</b>  | Minutes of the last meeting held on 17 September 2015  | 5 - 16  |
| <br>      |  |         |
| <b>2</b>  | Apologies for Absence  |         |
| <br>      |  |         |
| <b>3</b>  | Declarations of Interests by Members and Officers:- (see note below)<br>(a) Disclosable Pecuniary Interests<br>(b) Private Interests (pecuniary and non-pecuniary) |         |
| <b>4</b>  | Chairman's Business<br>a) Presentation of Awards/Certificates (if any)   |         |
| <br>      |  |         |
| <b>5</b>  | Constituency Issues (see note 4)   |         |
| <br>      |  |         |
| <b>6a</b> | Presentation of Petitions (if any) (see note 5 below)  |         |
| <br>      |  |         |
| <b>6b</b> | Responses to Petitions Presented to the Chairman of the County Council   | 17 - 24 |
| <br>      |  |         |
| <b>7</b>  | Clarification of Committee Meeting Minutes published since the last meeting  | 25 - 26 |

<b>8</b>	Treasury Management Mid-Year Report 2015-16	27 - 34
<b>9</b>	County Boundary Review - Final Recommendations for New Electoral Arrangements	35 - 92
<b>10</b>	Recognition of Members and Officers of Groups	93 - 96
<b>11</b>	Membership of Committees	97 - 104
<b>12</b>	Questions	
	a) Questions to Nottinghamshire and City of Nottingham Fire Authority	
	b) Questions to Committee Chairmen	
<b>13</b>	ADJOURNMENT DEBATE (if any)	

Notes:-

**(A) For Councillors**

(1) Members will be informed of the date of their Group meeting for Council by their Group Researcher.

(2) The Chairman has agreed that the Council will adjourn for lunch at their discretion.

(3) (a) Persons making a declaration of interest should have regard to the Code of Conduct and the Procedure Rules for Meetings of the Full Council. Those declaring must indicate whether their interest is a disclosable pecuniary interest or a private interest and the reasons for the declaration.

(b) Any member or officer who declares a disclosable pecuniary interest in an item must withdraw from the meeting during discussion and voting upon it, unless a dispensation has been granted. Members or officers requiring clarification on whether to make a declaration of interest are invited to contact the Monitoring Officer or Democratic Services prior to the meeting.

(c) Declarations of interest will be recorded and included in the minutes of this meeting and it is therefore important that clear details are given by members and others in turn, to enable Democratic Services to record accurate information.

(4) At any Full Council meeting except the annual meeting, a special meeting and the budget meeting, Members are given an opportunity to speak for up to three minutes on any issues which specifically relates to their division and is relevant to the services provided by the County Council. These speeches must relate specifically to the area the Member represents and should not be of a general nature. They are constituency speeches and therefore must relate to constituency issues only. This is an opportunity simply to air these issues in a Council meeting. It will not give rise to a debate on the issues or a question or answer session. There is a maximum time limit of 30 minutes for this item.

(5) Members are reminded that petitions can be presented from their seat with a 1 minute time limit set on introducing the petition.





# Nottinghamshire County Council

Meeting COUNTY COUNCIL

Date Thursday, 17<sup>th</sup> September 2015 (10.30 am – 2.53 pm)

## Membership

Persons absent are marked with 'A'

## COUNCILLORS

Sybil Fielding (Chairman)  
Yvonne Woodhead (Vice-Chairman)

	Reg Adair	John Knight
	Pauline Allan	Darren Langton
	Roy Allan	Bruce Laughton
	John Allin	Keith Longdon
	Chris Barnfather	Rachel Madden
	Alan Bell	Diana Meale
	Joyce Bosnjak	John Ogle
	Nicki Brooks	Philip Owen
	Andrew Brown	Michael Payne
	Richard Butler	John Peck JP
	Steve Calvert	Sheila Place
A	Ian Campbell	Liz Plant
	Steve Carr	Mike Pringle
	Steve Carroll	Darrell Pulk
	John Clarke	Alan Rhodes
	John Cottee	Ken Rigby
	Jim Creamer	Tony Roberts MBE
	Mrs Kay Cutts MBE	Mrs Sue Saddington
	Maureen Dobson	Andy Sissons
A	Dr John Doddy	Pam Skelding
	Boyd Elliott	Martin Suthers OBE
	Kate Foale	Parry Tsimbiridis
	Stephen Garner	Gail Turner
	Glynn Gilfoyle	Keith Walker
	Kevin Greaves	Stuart Wallace
	Alice Grice	Muriel Weisz
	John Handley	Gordon Wheeler
	Colleen Harwood	John Wilkinson
	Stan Heptinstall MBE	Jacky Williams
	Tom Hollis	John Wilmott
	Richard Jackson	Liz Yates
	Roger Jackson	Jason Zadrozny
	David Kirkham	

## **OFFICERS IN ATTENDANCE**

Anthony May	(Chief Executive)
Jayne Francis–Ward	(Policy, Planning and Corporate Services)
David Pearson	(Adult Social Care, Health & Public Protection)
Derek Higton	(Children, Families and Cultural Services)
Neil Stevenson	(Environment and Resources)
Carl Bilbey	(Policy, Planning and Corporate Services)
Martin Done	(Policy, Planning and Corporate Services)
Keith Ford	(Policy, Planning and Corporate Services)
Catherine Munro	(Policy, Planning and Corporate Services)
Anna O'Daly-Kardasinska	(Policy, Planning and Corporate Services)
Michelle Welsh	(Policy, Planning and Corporate Services)

## **OPENING PRAYER**

Upon the Council convening, prayers were led by the Chairman's Chaplain.

## **MINUTE SILENCE**

A minute silence was held in memory of former County Councillors John Moore, Florence Price OBE and Gordon Young.

## **1. MINUTES**

### **RESOLVED: 2015/039**

That the Minutes of the last meeting of the County Council held on 9<sup>th</sup> July 2015 be agreed as a true record and signed by the Chairman with an amendment to the attendance list and apologies for absence as Councillor John Handley had submitted his apologies (other reasons) for the meeting.

## **2. APOLOGIES FOR ABSENCE**

An apology for absence was received from:-

Councillor John Doddy (other reasons)

## **3. DECLARATIONS OF INTEREST**

There were no declarations of interest

## **4. CHAIRMAN'S BUSINESS**

**Former County Councillors John Moore, Florence Price OBE and Gordon Young**

The Chairman, Councillor David Kirkham, Councillor Parry Tsimbiridis and Councillor Joyce Bosnjak all spoke in memory of former County Councillors Florence Price OBE, John Moore and Gordon Young.

## **5. CONSTITUENCY ISSUES**

The follow Members spoke for up to three minutes on issues which specifically related to their division and was relevant to the services provided by the County Council.

Councillor Philip Owen – IT services in his division

Councillor John Wilmott – lack of public toilets in Hucknall and tourism in the town. Proposal to have a “super surgery” including social care to provide services for the growing population

Councillor Bruce Laughton – the effects of housing development in Southwell

Councillor Gail Turner – the LEADER Funding Programme and the potential benefits for her division

Councillor Stephen Garner – HGVs on roads in his division, and the future need of additional secondary school places in light of the current increased demand on primary places in his division.

## **6. PRESENTATION OF PETITIONS**

The following petitions were presented to the Chairman as indicated below:-

- (1) Councillor John Ogle regarding a new school hall for East Markham Primary
- (2) Councillor Sue Saddington requesting a reduction in speed on B6325 at South Muskham
- (3) Councillor Mrs Kay Cutts MBE regarding street lighting
- (4) Councillor Tony Roberts MBE from residents of Riverside Road, Newark calling for the grass verges on the side of the road to be tarmacked
- (5) Councillor Reg Adair requesting road resurfacing from Costock residents
- (6) Councillor Andy Sissons regarding a one-way system near the entrance to King Edward Primary school
- (7) Councillor Liz Plant regarding request for parking restrictions on Tudor Road

- (8) Councillor Colleen Harwood regarding double yellow lines on Bellamy Road, Mansfield East

**RESOLVED: 2015/040**

That the petitions be referred to the appropriate Committees for consideration in accordance with the Procedure Rules, with a report being brought back to Council in due course

Councillor Laughton left the meeting during consideration of this item as he was feeling unwell and he did not return.

**7. CLARIFICATION OF MINUTES**

The report provided Members with the opportunity to raise any matters of clarification in the Minutes of Committee meetings published since the last meeting.

**8. STATEMENT OF ACCOUNTS 2014/15**

Councillor David Kirkham introduced the report and moved a motion in terms of resolution 2015/041 below.

The motion was seconded by Councillor Darren Langton.

**RESOLVED: 2015/041**

- 1) That the contents of the Annual Governance Report be noted
- 2) That the letter of representation be approved
- 3) That the Statement of Accounts 2015/15 be approved

**9. OFSTED INSPECTION OF CHILDREN'S SERVICES**

Councillor John Peck introduced the report and moved a motion in terms of resolution 2015/42 below.

The motion was seconded by Councillor Kate Foale.

**RESOLVED: 2015/042**

That the outcome of the inspection of children's services that took place in May/June 2015 be noted.

**10. ARMED FORCES COMMUNITY COVENANT**

Councillor Alan Rhodes Carroll introduced the report and moved a motion in terms of resolution 2015/43 below.



The motion was seconded by Councillor Joyce Bosnjak.

**RESOLVED: 2015/043**

- 1) That the Royal British Legion campaign for further support for the Armed Forces Community Covenant be noted.
- 2) That the appointment of Councillor Ian Campbell as the Member Champion for Armed Forces be agreed
- 3) That it be agreed that the member and officer champion for the Armed Forces Community covenant undertake further work in relation to the possibilities for implementation of the policy changes as requested by the Royal British Legion and for a further report to be brought to the relevant committee on recommendations arising from this work
- 4) That the work to date on the covenant and in particular the event on 12<sup>th</sup> November "Civilian Life" be noted

**11. QUESTIONS**

**(a) QUESTIONS TO NOTTINGHAMSHIRE AND CITY OF NOTTINGHAM FIRE AUTHORITY**

No questions were received

**(b) QUESTIONS TO COMMITTEE CHAIRMEN**

Five questions had been received as follows:-

- 1) from Councillor Liz Yates about Smoke Free Policy (Councillor Sheila Place replied)
- 2) from Councillor Tony Roberts MBE regarding cycling on pavements and footpaths (Councillor Kevin Greaves replied)
- 3) from Councillor John Wilkinson concerning the role of the Council during the continuing refugee humanitarian crisis (Councillor Alan Rhodes replied)
- 4) from Councillor Mrs Kay Cutts MBE about S106 monies from the further redevelopment of the former Cotgrave Colliery site (Councillor David Kirkham replied)

The full responses to these questions are set out in Appendix A to these Minutes.

As Councillor Laughton had left the meeting due to feeling unwell, he was not present to ask his question below. Following a request, the Chairman agreed that due to the sudden nature of Councillor Laughton's illness which meant he had to unexpectedly leave the meeting a written response would be provided to him following the meeting which would be included within the papers for the next Full Council meeting.

- 5) From Councillor Bruce Laughton about increasing permanent classroom spaces at Lowe Wong School (Councillor John Peck JP to reply)

Council adjourned for lunch from 12.30pm to 1.30pm after question 2. Councillor Garner did not return to the meeting after lunch.

## **12. NOTICE OF MOTION**

A motion as set out below was moved by Councillor Philip Owen and seconded by Councillor Richard Butler:-

"This Council:-

- a) Shares the concern of residents in Hucknall that Gedling Borough Council's plans for 1,000 new homes at Top Wighay Farm and 300 new homes North of Papplewick Lane will place great strain on public infrastructure in their town;
- b) Recognises that demand on Nottinghamshire County Council services such as highways, education and public health will inevitably increase as a result of this development;
- c) Reminds the charging authority, Gedling Borough Council, that sufficient developer contributions must be provided to Nottinghamshire County Council in good time to fund the expansion of these services so they are in place for the occupiers of the new dwellings;
- d) Asserts that these essential services, which cross local government boundaries and tiers, must take priority over any other plans to use developer contributions to fund facilities in Gedling Borough."

Following a debate the motion put to the meeting and after a show of hands the Chairman declared it was lost.

The requisite number of Members requested a recorded vote and it was ascertained that the following 30 Members voted '**For**' the motion:-

Reg Adair  
Chris Barnfather  
Andrew Brown  
Richard Butler  
Steve Carr  
John Cottee

Mrs Kay Cutts MBE  
Boyd Elliott  
John Handley  
Stan Heptinstall MBE  
Tom Hollis  
Richard Jackson

Roger Jackson  
Keith Longdon  
Rachel Madden  
John Ogle  
Philip Owen  
Ken Rigby  
Tony Roberts MBE  
Mrs Sue Saddington  
Andy Sissons

Martin Suthers OBE  
Gail Turner  
Keith Walker  
Stuart Wallace  
Gordon Wheeler  
Jacky Williams  
John Wilmott  
Liz Yates  
Jason Zadrozny

The following 32 Members voted '**Against**' the motion:-

Pauline Allan  
Roy Allan  
John Allin  
Alan Bell  
Joyce Bosnjak  
Nicki Brooks  
Steve Calvert  
Steve Carroll  
John Clarke  
Jim Creamer  
Sybil Fielding  
Kate Foale  
Glynn Gilfoyle  
Kevin Greaves  
Alice Grice  
Colleen Harwood

David Kirkham  
John Knight  
Darren Langton  
Diana Meale  
Michael Payne  
John Peck JP  
Sheila Place  
Liz Plant  
Mike Pringle  
Darrell Pulk  
Alan Rhodes  
Pamela Skelding  
Parry Tsimbirdis  
Muriel Weisz  
John Wilkinson  
Yvonne Woodhead

Councillor Maureen Dobson **Abstained**.

The Chairman declared that the motion was lost.

#### **14. ADJOURNMENT DEBATE**

None

The Chairman declared the meeting closed at 2.53 pm.

**CHAIRMAN**



## **APPENDIX A**

### **COUNTY COUNCIL MEETING HELD ON 17<sup>TH</sup> SEPTEMBER 2015 QUESTIONS TO COMMITTEE CHAIRMEN**

#### **Question to the Chairman of the Personnel Committee, from Councillor Liz Yates**

Early in September I learned through the media and the Nottinghamshire County Council Intranet that this authority is consulting Trade Unions and others about an update to the Council's "Smokefree Policy", which would affect our employees.

When I asked an officer why I had received no prior notification of this consultation as the Main Opposition Spokesman for Personnel, I received an apology and was told that the proposal had "originated from Public Health".

Would the Chairman of the Personnel Committee agree that this is clearly a cross-cutting matter which should have been brought before her Committee even if it was also being considered elsewhere, and can she confirm whether and where this consultation was discussed and approved by Members?

Would she agree with me that when Full Council agreed last November to sign the 'Local Government Declaration on Tobacco Control' and endorse the 'Nottinghamshire County and Nottingham City Declaration on Tobacco Control', this did not commit the authority to the kind of restrictions now being proposed?

#### **Response from Councillor Sheila Place, Chairman of the Personnel Committee**

"The County Council did sign the Local Government Declaration on Tobacco Control on 20<sup>th</sup> November last year. The Declaration committed the Council to an action plan, an action of which is to review the current smoke free policy and take all possible steps to protect the health and safety of all employees during work time.

With regard to Councillor Yates' question around discussion and approval by Members on the consultation, we recognise that this wasn't appropriately handled. There have already been discussions between the Leader and the Chief Executive about this, and we have received assurances that it won't happen again.

I would like to reassure Councillor Yates that once the final proposals have taken shape on the back of the consultation, they will be taken to Personnel Committee for Members to consider."

#### **Question to the Chairman of the Transport and Highways Committee, from Councillor Tony Roberts MBE**

Does the chairman of the Transport & Highways Committee share the concern raised with me by several residents in Newark West, about the increasing incidence of cyclists riding on public highway pavements and footpaths rather than keeping to the road or designated cycle tracks?

To the best of his knowledge, are these unsafe cycling practices being reported more often across the Nottinghamshire area?

**Response from Councillor Kevin Greaves, Chairman of the Transport and Highways Committee**

"In the last twelve months there were eight cycling issues concerning riders on pavements which were reported to the County Council through the Customer Services Centre. Three of these eight issues were in Newark. In the previous twelve months to that there was one issue reported in the whole of Nottinghamshire.

Newark has one of the highest cycling rates in the County, and cycle facilities such as cycle lanes, and advanced stop lines at traffic signals have all been introduced to cater for this demand.

Cycling on the pavement is illegal but is also very difficult to enforce because it needs a Police Officer or PCSO present to issue a Fixed Penalty Notice which is an on the spot fine of £30. We will continue to work with Nottinghamshire Police regarding any reported incidents."

**Question to the Leader of the Council, from Councillor John Wilkinson**

In the light of the continuing humanitarian crisis facing hundreds of thousands of refugees fleeing warfare, tyranny and death, and the woefully inadequate response of central government, does the Leader of the Council see any valuable role for Nottinghamshire County Council in alleviating such widespread misery?

**Response from Councillor Alan Rhodes, Leader of the Council**

"The full horror of the human tragedy which is unfolding across Europe was realised as the image of the lifeless body of a young boy who drowned attempting to reach the Greek island of Kos was released to the world. The image encapsulated the great risks refugees are taking in order to escape the perils of their own country.

It was perhaps at this moment that not only our own county or even Europe but the Western World actually realised the true tragedies and the great loss of life which was becoming part of everyday life for those people desperately trying to seek safety from the atrocities, fear and often persecution in their own country. No-one can fail to have been touched by the plight of the people fleeing war-torn Syria and my heart goes out to all those people affected.

Nottinghamshire County Council is a compassionate council and has a long and proud history of providing help and support to refugees across a wide range of different services.

These are exceptional circumstances that require a response at both international and national levels, and as a compassionate council I believe we should be providing as much support to as many of these unfortunate people as we possibly can at a local level.

Many communities in Nottinghamshire have been showing compassion as we have seen collections of food, clothing, blankets and sleeping bags for the refugees who find themselves with either very little or no possessions. I would like it to go on record how very proud I am of these communities and the compassion that the people of Nottinghamshire are demonstrating.

As a County Council we have always played our part with the refugees which settle here in Nottinghamshire some of which are very vulnerable children and young people. There is provision in place to ensure they are housed and supported in transition to education and supported with language needs. We also offer support to families in order to understand our education system in this country.

We are already working in collaboration with our District Council Partners and the East Midlands councils as well as other associated agencies such as the NHS to ensure we play our full part in the Syrian Vulnerable Persons Scheme. I have requested that the Chief Executive provide a single point of contact within the Council to act as a coordinating focal point for all enquiries from our partner Councils and Agencies and to ensure that appropriate access is given to County Council services. These arrangements are currently being formalised and will become operational by the end of the week. We are awaiting full details from Government about the role local councils can play in meeting the national commitment in the resettlement of those affected. I envisage there will be a role for both District Councils and other social housing providers in terms of accommodation, as well as our services including social care, transport and education.

I believe Nottinghamshire should play its part in welcoming a proportionate share of the displaced families. I also believe we require a national and international response to the crisis and it is a crisis. We are seeing suffering as the lives of men, women and children are tragically ending as they desperately try to flee warfare and tyranny. You have my assurance we will do all we that we possibly can."

**Question to the Chairman of Finance and Property Committee, from Councillor Mrs Kay Cutts MBE**

On 15<sup>th</sup> July 2013, the Finance and Property Committee received a report on the future redevelopment of the former Cotgrave Colliery site, and approved a land exchange between the County Council and the Homes & Communities Agency.

Would the Chairman of the Finance & Property Committee confirm whether the County Council has received, or will soon receive, all of the Section 106 monies identified in that report as necessary to:-

- a) ensure the sustainable future management of the County Council-owned Cotgrave County Park (£105,000) and Cycle Track (£57,000) ; and
- b) make provision for the continued protection of the ecological habitats and enhance the green areas of the development to reduce any visual impact on the Country Park?

**Response from Councillor David Kirkham, Chairman of the Finance and Property Committee**

"I am pleased to confirm that the developers of the former Cotgrave Colliery have paid Rushcliffe Borough Council £66,890.41 towards cycle paths. Nottinghamshire County Council officers are in the process of claiming this from the Borough Council. Monies towards ecology and the Country Park are expected in the spring of 2016 when the appropriate triggers in terms of number of houses built are reached. I would like to reassure Councillor Cutts that we have the same aspirations to ensure that any developer contributions due to the Council are received and that the development at Cotgrave Colliery does not adversely impact on Cotgrave Country Park which is enjoyed by local residents."



**REPORT OF THE CHAIRMAN OF THE TRANSPORT AND HIGHWAYS  
COMMITTEE****RESPONSES TO PETITIONS PRESENTED TO THE CHAIRMAN OF THE  
COUNTY COUNCIL****Purpose of the Report**

1. The purpose of this report is to inform Council of decisions made by the Transport and Highways Committee concerning issues raised in petitions presented to the County Council on 14<sup>th</sup> May, 9<sup>th</sup> July and 17<sup>th</sup> September 2015.
- A. **Petition Regarding Parking Problems at Orchard Close, Sutton Bonington (Ref 2015/0117)**
2. Councillor Andrew Brown presented a petition of 16 signatures to County Council on 14<sup>th</sup> May 2015 from residents of Orchard Close, Sutton Bonington who requested that the Doctors Surgery be relocated. This following an extension of the surgeries opening hours, increasing the volume of patients and staff, which is causing parking problems on the road. Parked vehicles were stated to be blocking accesses and making it difficult for residents to park on the road. Vehicles are also reported to be parking on pavements, causing a hazard to pedestrian who are forced into the road.
3. Rushcliffe Borough Council, the Planning Authority, reports that the Doctors Surgery has operated from 45 Orchard Close with Planning Permission since 1977. There were no restrictions put on the opening hours of the surgery and the extended opening hours do not require further planning permission. The County Council has no powers to relocate the surgery and since the current Planning Permission is valid, Rushcliffe Borough Council cannot take any further action regarding this.
4. The County Council has no powers to control parking on the pavements as this is within the remit of the Police. In terms of a safety hazard, there have been no accidents resulting in injury reported within the lengths of Orchard Close in the three years leading up to 31<sup>st</sup> January 2015. Generally traffic flows are low and travel at low speed.
5. The County Council has powers to restrict parking, but this small residential estate would not be a high priority for a residents' parking scheme and the surgery would be entitled to a number of parking permits as it is within the area. It may also be the case that visitors to the surgery would be less able to walk from further away and the Council has to consider

impacts on the mobility impaired due to the Equality Act. Additionally, parking for the surgery would be likely to transfer onto surrounding roads. Double or single yellow lines would restrict parking for all parties and be likely to inconvenience residents as much as the surgery's visitors.

6. The Council offers the installation of white 'H-Bar' road markings to residents who wish to purchase them to deter obstructive parking across their accesses at a cost of £178 each. Application letters will be sent out to any residents who request them.

**B. Petition Regarding the Warsop to Worksop Bus Service (Ref 2014/0118)**

7. A petition signed by 432 residents regarding the Edwinstowe to Warsop bus service was presented to the County Council on 9<sup>th</sup> July 2015 by Councillor John Allin.
8. The Worksop – Warsop – Edwinstowe service 209 was introduced in August 2014 following a countywide review of local bus services as part of the budget efficiencies programme. This involved a reduction in the frequency of poorly used services in the area. Passenger figures for the 209 service are being assessed and further discussions will be held with Councillor John Allin to assess how the needs of the local community can be met. Any increase in the services will be dependent on usage and the availability of funding from the Local Bus Service budget. Any recommendations regarding the future funding of local bus services in the area will be brought to the Transport and Highways Committee later this year.

**C. Request for a Bus Shelter on Ilkeston Road (Hicklins Lane), Stapleford (Ref 2014/0119)**

9. A petition signed by 34 residents was presented to the County Council on 9<sup>th</sup> July 2015 by Councillor Jacky Williams.
10. The request for a shelter at Ilkeston Road, Stapleford was received in June 2015 followed shortly after by the petition. A site visit has been undertaken together with an assessment of the passenger numbers using the stop and a safety audit of the site. The location meets the criteria for a bus shelter which can be provided and funded from the bus shelter programme. Residents living near the bus stop site will be contacted about the proposed shelter and upon completion of this consultation, the bus shelter will be ordered. It is expected that a two panel polycarbonate bus shelter with half end panels will be installed by spring 2016.

**D. Petition Regarding Bus Services in Beeston North (Ref 2014/0120)**

11. A 323 signature petition was presented to the County Council on 9<sup>th</sup> July 2015 by Councillor Steve Carr. The petition asked the County Council to ensure that North Beeston continues to get a frequent bus service.
12. The new Beeston Tram and Bus Interchange opened on 12<sup>th</sup> July 2015 with a number of changes being made to commercially provided bus services. Yourbus have introduced a new X36 and S1 service which operates along Bramcote Avenue, Park Street and Wollaton Road every 30 minutes. The peak time X36 journeys extends to Nottingham and the off peak S1 service connects at the new Interchange with a number of high frequency bus services and the tram to Nottingham and Chilwell. All previous stops in Beeston are covered by the new routes.

**E. Petition Regarding Inappropriate Short Cuts by Vehicles in the Beeston North Area (Ref 2015/121)**

13. A 26 signature petition was presented to the 9<sup>th</sup> July 2015 meeting of the County Council by Councillor Steve Carr. The petitioners were concerned about vehicles using inappropriate short cuts to avoid congestion on the A52.
14. There are no access restrictions or traffic calming in the area, however construction works for the tram are close to completion and it is accepted that with any major works on the highway there is a tendency for traffic movements around the area to alter and those movements should change on completion of these works. Contact has been made with the manager of the local depot of UPS (a nationwide parcels delivery firm) requesting that their vans use more appropriate routes although it is possible that the company will have legitimate reason for accessing the area to deliver parcels to residents and shops.
15. The accident history for the area does not justify any improvements. However, the carriageway markings in the area need refreshing and this work will be added to the future programme.

**F. Petition Requesting Improvements to the Carriageway Condition on Carlingford Road, Hucknall (Ref 2015/122)**

16. An 85 signature petition was presented to the 9<sup>th</sup> July 2015 meeting of the County Council by Councillor John Wilmott. The petitioners requested improvements be undertaken to the carriageway on Carlingford Road, Hucknall.
17. The carriageway has been inspected recently and it has numerous areas of surface course fretting and old utility reinstatements. The issues are compounded by double parking along the road, thus all traffic takes the same centre line. Notwithstanding this, no actionable defects were found during the inspection.
18. In the meantime, the condition of the carriageway will be monitored via the routine annual inspections and any defects repaired which jeopardise the safety of road users. Although not included in the original 2015/16 resurfacing programme the road is being assessed for inclusion in the programme should the opportunity arise.

**G. Petition Requesting the Resurfacing of a Grassed Area on Knoll Avenue, Hucknall (Ref: 2014/0123)**

19. A 29 signature petition was presented to the 9<sup>th</sup> July 2015 meeting of the County Council by Councillor John Wilmott. The petitioners requested the large grassed area of adopted highway in front of properties 9 to 27 on Knoll Avenue, Hucknall be turned into a car park for local residents.
20. Soft landscape areas within the highway enhance the local environment and the grass is well maintained with two well established trees and utility services in the area. The creation of a car parking area would necessitate the removal of these features. It is accepted that on occasion residents may not be able to park directly outside their properties but are able to park within a reasonable distance. It is not considered that the creation of a parking area is warranted.
21. It should be noted that the recent tragic fatality in this vicinity was not related to the issues contained within the petition.

**H. Petition Requesting Reduction in Speed Limit on B6325 (Ref 2015/0124)**

22. A 118 signature petition was presented to County Council on 17<sup>th</sup> September 2015 by Councillor Sue Saddington on behalf of residents of South Muskham. The petition requested a reduction in the speed limit from 40mph to 30mph on the B6325 through the village in the interest of road safety and noise reduction. In addition, the petition requested consideration of traffic slowing measures on all approaches.
23. The requested speed limit reduction on the B6325 will be incorporated into the proposed speed limit reduction on the A616 Ollerton Road (Debdale Hill to South Muskham island) that was included in the draft 2016/17 integrated transport capital programme approved by Transport and Highways Committee on 8<sup>th</sup> October 2015. The speed limit alterations are subject to statutory process. It is not considered appropriate to introduce traffic calming features along this route.

**I. Petition Requesting Return of All Night Operation Lighting in Radcliffe-on-Trent (Ref 2015/0125)**

24. A 25 signature petition from the residents of Orford Avenue, Water Lane, Hogg Lane and Hall Close, Radcliffe-on-Trent was presented by Councillor Mrs Kay Cutts to the County Council on the 17<sup>th</sup> September 2015.
25. Residents have concerns about the part night lighting on these roads and are requesting that the lighting is returned to full night operation.
26. There are plans to address the lighting in the whole of the Rushcliffe area in 2016. Works will involve a bulk clean and change to existing newer equipment and replacement of older lanterns with LED's alternatives. The LED's will dim at night rather than switch off and are more efficient than the old part night lit lanterns.
27. In response to the petition, Radcliffe-on-Trent will be programmed first to address the concerns raised by residents. Works are hoped to start in January 2016.

**J. Petition Opposing the Proposed Parking Restrictions at St Peter's School Bellamy Road, Mansfield (Ref 2015/0126)**

28. A 29 signature petition was presented to County Council on 17<sup>th</sup> September 2015 by Councillor Colleen Harwood. The petition is a result of consultation undertaken proposing the introduction of parking restrictions in the vicinity of St Peter's School at Bellamy Road Mansfield. The parking restrictions are being proposed to enhance pedestrian safety outside the School. The proposed improvements include double yellow lines along sections of Bellamy Road and double yellow lines to protect the junctions of Bellamy Road/Thorpe Road and Bellamy Road/School Car Park. It is also proposed to make the existing Bus Stop marking a Bus Stop Clearway.
29. The petition opposes the proposed parking restrictions. The petition raises concern that the reduction in on-street parking will cause displacement of parents' vehicles into Thorney Court which provides parking for Thorney Court residents only.
30. The consultation on the changes to the Traffic Regulation Orders ended on Wednesday 6th May 2015 and the petition will be considered as an objection to the scheme. The outcome of the consultation, including the objections contained in the petition (and any

other comments/objections received), were considered and reported to Transport and Highways Committee at its meeting on 12<sup>th</sup> November 2015 and it was agreed that the restriction be implemented as advertised.

**K. Petition Requesting Residents' Parking on Tudor Road, West Bridgford (Ref 2015/0127)**

31. A 44 signature petition was presented to County Council on 17<sup>th</sup> September 2015 by Councillor Liz Plant on behalf of residents of Tudor Road, West Bridgford and three residents of other nearby roads. The petition requested that a residents' parking scheme be introduced on this road.
32. The road is a residential street located near to the town centre. The adjacent junior school has a pedestrian access from Tudor Road. Residents complain that commuter parking and parents waiting at dropping off and collection time make it difficult to park near their properties.
33. Several properties within the area already have the benefit of an existing residents' parking scheme and properties on the remainder of the road have off-street parking either in the form of garages to the rear served by shared driveways or a row of garages with forecourts along the western side of the road.
34. Given that most properties that would benefit from a residents' parking scheme have off-street parking, it is not considered that a residents' parking scheme on Tudor Road would be considered a priority and so no further action is intended at this time.

**L. Petition Requesting One Way System at King Edward School, St Andrew's Street, Mansfield (Ref 2015/0128)**

35. Councillor Andy Sissons presented a 30 signature petition to County Council on 17<sup>th</sup> September 2015 asking that a one way system be introduced around St Andrew Street and St Catherine Street in Mansfield to combat obstruction and safety issues due to high levels of parking for King Edward School.
36. This pattern of parking is commonplace outside all schools in the County and although it causes congestion, it also significantly slows vehicle speeds. The Police have stated that school parking acts as natural traffic calming in effect. One way systems have been shown to increase average vehicle speeds due to their being no opposing flow of traffic, so this would not improve safety. Accident records show that there have been no recorded accidents resulting in personal injury in the last three years on either road.
37. In recent years the County Council has introduced two ongoing Countywide Programmes to improve safety outside schools. The School Keep Clear Enforcement Programme will make all school entrance zig zag markings in the County legally enforceable by the end of March 2016 and this improvement has been completed at this location. From early 2016 the Council will be operating an enforcement vehicle which will target school zig zags in particular. In addition, the 20mph School Zones Programme will introduce 20mph speed limits around all schools and the specific scheme outside King Edward School was completed on 21<sup>st</sup> September 2015. This 20mph zone covers a wide area around the school including parts of the two adjacent main roads, Littleworth and Baums Lane. These measures outline the Council's strategy to improve safety outside schools by reducing vehicle speeds and keeping the critical points where child pedestrians emerge onto the highway clear, whilst not attempting to displace parking unnecessarily which would lose

the natural traffic calming effect and spread child pedestrian movements over a wider area.

**M. Petition Requesting Resurfacing of Chapel Lane and Church Street, Costock (Ref 2015/0129)**

38. On 17<sup>th</sup> September 2015 Councillor Reg Adair presented a petition of 89 signatures to Full Council asking that Chapel Lane and Church Lane in Costock be resurfaced as both are in poor condition and one resident had received injuries in a fall.
39. Church Lane and Chapel Lane are very narrow residential roads with no footways for the most part. Both are inspected annually as part of the Council's standard maintenance regime, but Chapel Lane has also had two ad hoc inspections in the last 12 months following pothole reports from residents which were repaired. It is accepted that the condition of both roads is generally poor and both have been considered for previous annual maintenance Programmes accordingly. However, neither road has yet been prioritised.

**N. Petition Requesting Surfacing of Grass Areas on Riverside Road, Newark (Ref 2015/0130)**

40. At the County Council meeting on 17<sup>th</sup> September 2015 a petition of 35 signatures was presented by Councillor Tony Roberts. The petition predominantly from residents, requests that Nottinghamshire County Council "tarmac grass verges on Riverside Road" in order to create parking areas.
41. Most of the properties in this area have off-street parking and it is not considered that the area suffers from intrusive parking by non-residents. Soft landscaping areas enhance the local environment. It is accepted that on occasion residents are not able to park directly outside their properties but can park within a reasonable distance. It is not considered that the creation of parking areas is warranted.

### **Other Options Considered**

42. Each petition response sets out any other options that may be considered.

### **Statutory and Policy Implications**

43. This report has been compiled after consideration of implications in respect of crime and disorder, finance, human resources, human rights, the NHS Constitution (Public Health only), the public sector equality duty, safeguarding of children and vulnerable adults, service users, sustainability and the environment and ways of working and where such implications are material they are described below. Appropriate consultation has been undertaken and advice sought on these issues as required.

### **Recommendation**

It is RECOMMENDED that the contents of the report, and the actions approved, be noted.

**Report of Councillor Kevin Greaves  
Chairman of the Transport & Highways Committee**



**For any enquiries about this report please contact:**

Jas Hundal  
Service Director – Transport, Property and Environment  
Tel 0115 977 4257

Neil Hodgson  
Service Director – Highways  
Tel 0115 977 4681

**Background Papers and Published Documents**

Minutes of County Council meetings on 14<sup>th</sup> May, 9<sup>th</sup> July and 17<sup>th</sup> September 2015.

**Electoral Division(s) Affected**

Soar Valley, Warsop, Bramcote and Stapleford, Beeston North, Hucknall, Farndon & Muskham, Radcliffe-on-Trent, Mansfield East, West Bridgford Central & South, Mansfield South, Ruddington, Newark West.





## **REPORT OF THE CHIEF EXECUTIVE**

### **Clarification of Minutes of Committee Meetings published since the last meeting on 17<sup>th</sup> September 2015**

#### **Purpose of the Report**

1. To provide Members the opportunity to raise any matters of clarification on the minutes of Committee meetings published since the last meeting of Full Council on 17<sup>th</sup> September 2015.

#### **Information and Advice**

2. The following minutes of Committees have been published since the last meeting of Full Council on 17<sup>th</sup> September 2015 and are accessible via the Council website:-  
<http://www.nottinghamshire.gov.uk/dms/Meetings.aspx>

<b>Committee meeting</b>	<b>Minutes of meeting</b>
Adult Social Care and Health Committee	7 <sup>th</sup> September, 5 <sup>th</sup> October
Appeals Sub-Committee	21 <sup>st</sup> July
Audit Committee	2 September*
Children & Young People's Committee	13 <sup>th</sup> July, 21 <sup>st</sup> September, 19 <sup>th</sup> October
Community Safety Committee	14 <sup>th</sup> July, 29 <sup>th</sup> September
Corporate Parenting Sub-Committee	None
Culture Committee	21 <sup>st</sup> July, 22 <sup>nd</sup> September
Economic Development Committee	8 <sup>th</sup> September, 3 <sup>rd</sup> November*
Environment and Sustainability Committee	3 <sup>rd</sup> September, 8 <sup>th</sup> October
Finance and Property Committee	14 <sup>th</sup> September, 12 <sup>th</sup> October
Grant Aid Sub-Committee	19 <sup>th</sup> May
Health Scrutiny Committee	20 <sup>th</sup> July, 21 September
Health & Well Being Board	2 <sup>nd</sup> September, 7 <sup>th</sup> October*
Joint City/County Health Scrutiny Committee	15 <sup>th</sup> September, 13 <sup>th</sup> October
Joint Committee on Strategic Planning and Transport	12 <sup>th</sup> June
Nottinghamshire Pensions Fund Committee	None
Pensions Investment Sub-Committee	3 <sup>rd</sup> September*
Pensions Sub-Committee	16 <sup>th</sup> July
Pension Fund Annual Meeting	7 <sup>th</sup> October 2014
Personnel Committee	1 <sup>st</sup> July, 23 <sup>rd</sup> September

<b>Committee meeting</b>	<b>Minutes of meeting</b>
Planning & Licensing Committee	21 <sup>st</sup> July, 22 <sup>nd</sup> September, 20 <sup>th</sup> October
Police & Crime Panel	7 <sup>th</sup> September
Policy Committee	9 <sup>th</sup> September, 7 <sup>th</sup> October
Public Health Committee	10 <sup>th</sup> September, 30 <sup>th</sup> September
Transport and Highways Committee	10 <sup>th</sup> September, 8 <sup>th</sup> October

\* Minutes expected to be published before 26<sup>th</sup> November 2015, but not yet approved by the relevant Committee.

**Anthony May**  
**Chief Executive**

**REPORT OF CHAIRMAN OF FINANCE AND PROPERTY COMMITTEE****TREASURY MANAGEMENT MID-YEAR REPORT 2015/16****Purpose of the Report**

1. To provide a mid-year review of the Council's treasury management activities in 2015/16 for the 6 months to 30 September 2015.

**Information and Advice**

2. Treasury management is defined as "the management of the council's investments and cashflows; its banking, money market and capital market transactions; the effective control of the risks associated with those activities; and the pursuit of optimum performance consistent with those risks".
3. County Council approves the Treasury Management Policy and Strategy and also receives mid-year and full year outturn reports. The Council delegates responsibility for the implementation, scrutiny and monitoring of its treasury management policies and practices to the Treasury Management Group, comprising the Service Director (Finance, Procurement & Performance), the Group Manager (Financial Management), the Senior Accountant (Pensions & Treasury Management) and the Senior Accountant (Financial Strategy & Compliance).
4. In the first half of 2015/16, borrowing and investment activities have been in accordance with the approved limits as set out in the Council's Treasury Management Policy and Strategy. Appendix A provides a detailed report on the treasury management activities and Appendix B provides a breakdown of the transactions during the period. The main points to note are:
  - All treasury management activities were undertaken by authorised officers within the limits agreed by the Council.
  - All investments were made to counterparties on the Council's approved lending list.
  - No new borrowing has been raised since the start of the financial year, but £7.6m has been redeemed on maturity.
  - The Council earned 0.67% on its short-term lending, performing better than the average 7 day London Inter-Bank Bid (LIBID) rate of 0.36%.

**Reason for recommendation**

5. It is considered good practice for Members to consider treasury management planned and actual performance at least three times per financial year, firstly in the Strategy Report

before the start of the year, then in this Mid-Year Report, and also in the Outturn Report, after the close of the financial year.

### **Statutory and Policy Implications**

6. This report has been compiled after consideration of implications in respect of finance, the public sector equality duty, human resources, crime and disorder, human rights, the safeguarding of children, sustainability and the environment and those using the service and where such implications are material they are described below. Appropriate consultation has been undertaken and advice sought on these issues as required.

### **Financial Implications**

7. There are no direct financial implications arising from this report.

## **RECOMMENDATION/S**

- 1) That the Council's treasury management activities for the first half of 2015/16 are noted.

**Councillor David Kirkham**  
**Chairman of Finance and Property Committee**

**For any enquiries about this report please contact:**  
**Simon Cunnington – Senior Accountant (Pensions & Treasury Management)**

### **Constitutional Comments**

8. Because this report is for noting only, no Constitutional Comments are required.

### **Financial Comments (SRC 05/11/15)**

9. There are no direct financial implications arising from this report.

## TREASURY MANAGEMENT MID-YEAR REPORT 2015/16

## 1. Treasury Management Activities

- 1.1 The Council's treasury management strategy and associated policies and practices for 2015/16 were approved in February 2015 by Full Council. The Council manages its investments in-house and invests with institutions on its approved lending list, aiming to achieve the optimum return on investments commensurate with appropriate levels of security and liquidity. The Council's treasury portfolio position at 30/09/2015 is shown in Table 1 below.

Table 1

Treasury Position as at 30 September 2015		£m	£m	Average Interest Rate
<b>EXTERNAL BORROWING</b>				
Fixed Rate	PWLB	295.5		5.11%
	Market Loan	100.0		3.85%
	Other	5.0	400.5	2.08%
Variable Rate	PWLB	0.0		
	Market Loan	0.0	0.0	
Temporary			0.0	
<b>Total</b>			<b>400.5</b>	4.75%
<b>Other Long-Term Liabilities</b>			<b>125.7</b>	
<b>Total Gross Debt</b>			<b>526.2</b>	
Less: Investments			(79.8)	0.62%
<b>Total Net Debt</b>			<b>446.4</b>	

Note 1: PWLB = Public Works Loans Board

Note 2: Market Loans = Lenders' Option, Borrowers' Option (LOBO) loans

- 1.2 Over the first 6 months of 2015/16 the Council's cash balances were maintained at an average of £94.4m without taking on any new debt and redeeming on maturity some £7.5m on PWLB debt. Surplus cash was invested through the wholesale money markets. The gross temporary lending position above shows outstanding balances of £79.8m, compared to the opening position of £70.2m. The average level of funds available for investment purposes over the period (£94.4m) was slightly lower than last year's figure of £99.7m. This was mainly a result of changes to the timing of precept payments, receipt of grants, progress on the capital programme and net movement on creditors and debtors.

- 1.3** The Council's borrowing and lending activity over the period is set out in Table 2 below. For the purposes of this analysis, other long-term liabilities (debt mainly relating to assets secured under PFI contracts) have been excluded.

<b>Table 2: Borrowing and Lending</b>	<b>Borrowing £m</b>	<b>Lending £m</b>	<b>Net Position £m</b>
Outstanding 1st April 2015	408.1	(95.8)	312.3
Raised/ (lent) during period	0.0	(385.3)	(385.3)
Repayments during period	(7.6)	401.3	393.7
Outstanding 30 Sep 2015	400.5	(79.8)	320.7

- 1.4** The Council's investment return (total interest receivable divided by the average outstanding principal) for the first half of the financial year was 0.67%. Over the same period the average 7 day LIBID was 0.36%.
- 1.5** This outperformance is partly due to the long-term fixed interest investments it has made as part of the Local Lend a Hand Scheme (operated by Lloyds Bank) whereby the investment also underwrites the mortgage deposit of local first-time buyers. On average the return on these is 2.59%.
- 1.6** For the majority of its investments the Council makes use of call accounts and money market funds to optimize security and liquidity. Over the period to 30 September the average return on call accounts was 0.40% and on money market funds it was 0.46%.
- 1.7** A snapshot of the Council's investments outstanding as at 30 September is shown in the table below.

<b>Table 3: Returns on Investments</b>	<b>Balance</b>	<b>Investment Return</b>
	<b>£m</b>	<b>%</b>
Fixed Term Investments	39.5	0.90
Bank Call Accounts	20.0	0.20
Money Market Funds	20.3	0.49
<b>Total</b>	<b>79.8</b>	<b>0.62</b>

- 1.8** There were no major changes made to the Council's lending criteria during the first half of the year, and the lending list itself remained stable. However, a modification was made at the July Council to take account of the Bank of England's change of policy regarding bank bailout: the Council amended its lending criteria in light of there being reduced government support in future for any UK financial institution that requires bailing out.

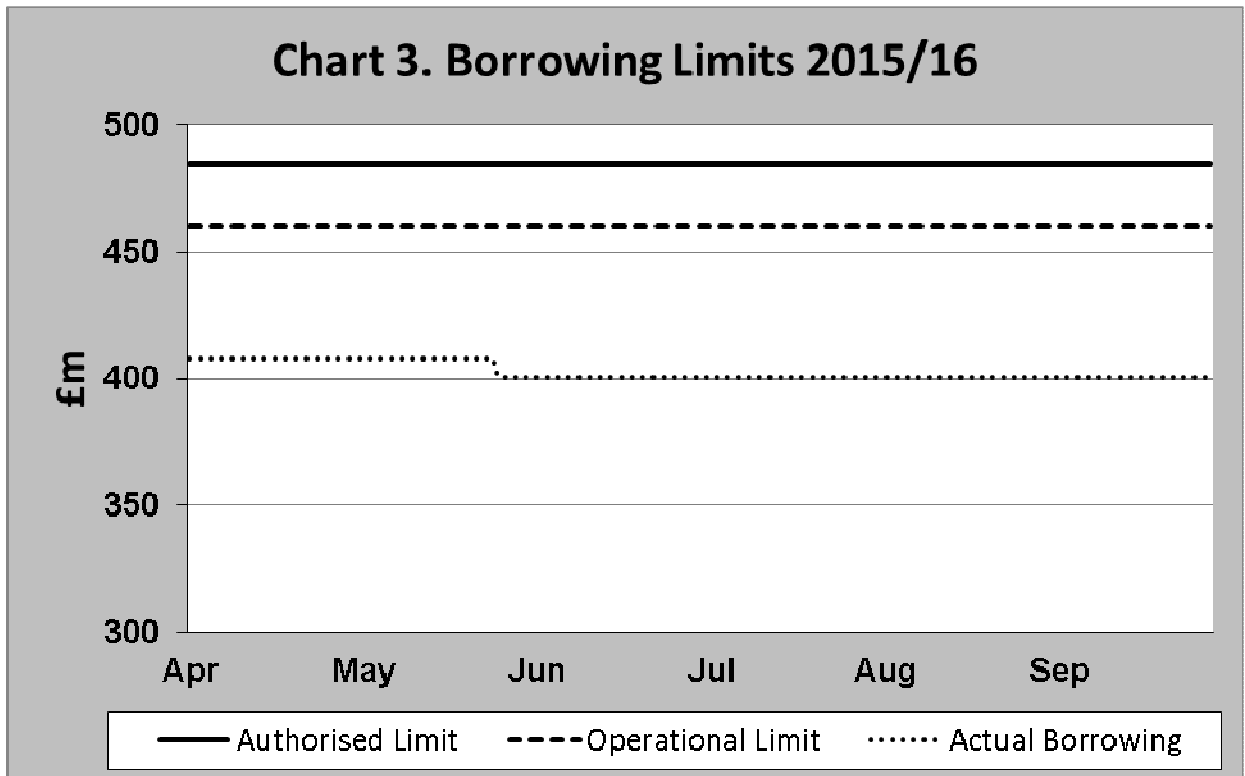
## **2. Long Term Borrowing**

- 2.1** Over the past several years the Council has partly financed the capital programme by using its cash balances (referred to as 'internal borrowing'). This utilises earmarked reserves, general fund reserves and net movement on current assets until the cash is required for their specific purposes.

- 2.2** This strategy has the effect of postponing external borrowing, thereby making short-term savings for the Council and also reducing credit risk (by having lower balances available for investments). However, this cashable benefit has to be weighed against the risk of not borrowing and taking advantage of lower interest rates which may increase in future. Delaying borrowing could therefore potentially lead to increased long-term costs. Maintaining absolute minimal cash balances is therefore not advisable, making some borrowing necessary despite relatively high existing cash balances.
- 2.3** The Council's Treasury Management Strategy for 2015/16 indicated borrowing of up to £78m would be required to finance the capital programme and maintain liquidity. However, during the first half of 2015/16 the Council undertook no additional borrowing, and may not need to borrow before the end of the financial year. This is partly due to PWLB interest rates remaining stable over the first half of the year (giving the Council little opportunity to benefit from temporary dips in the rates), and partly due to the Council's reserves forecast for 2015/16 not being as low as previously estimated. This should permit increased 'internal borrowing'. Of course, some borrowing within what is ultimately required for the capital programme may still be undertaken if PWLB rates appear favourable.
- 2.4** An update to the Council's borrowing requirement for 2015/16 is provided in Table 4 below:

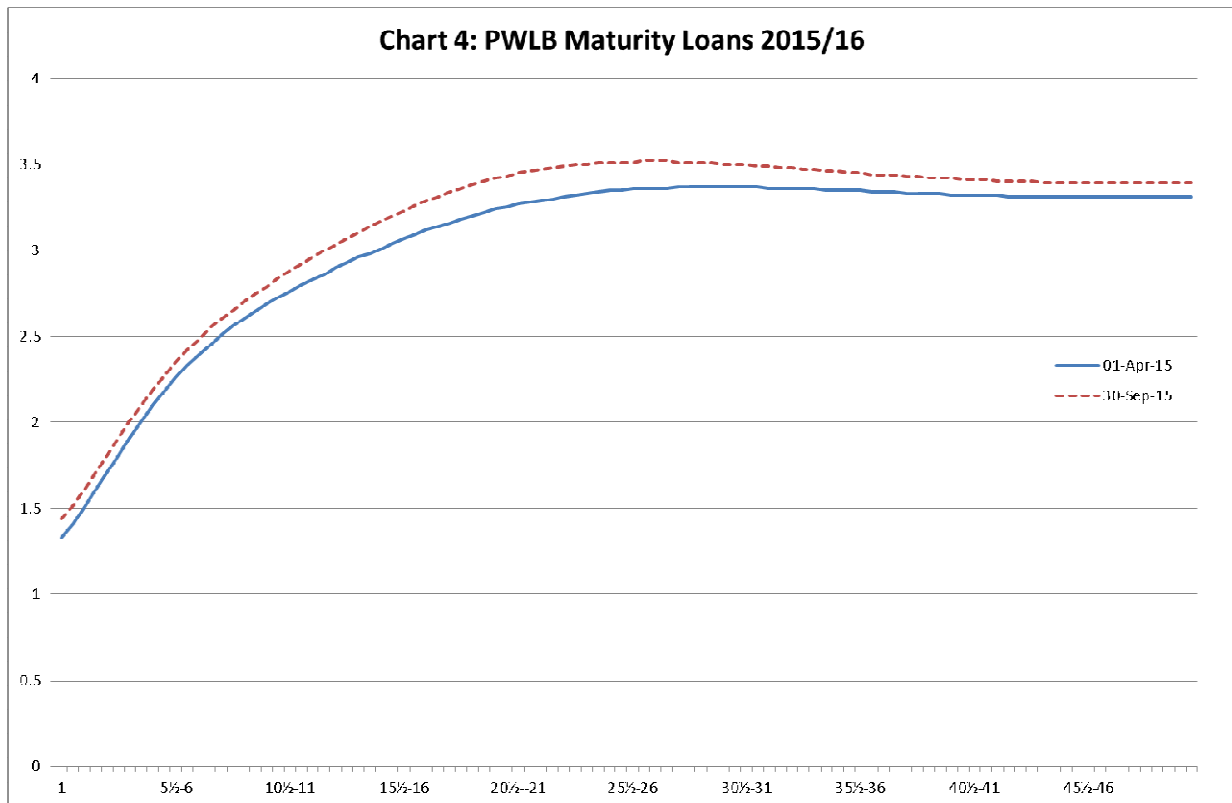
<b>Table 4</b>	<b>2015/16 Strategy</b>	<b>2015/16 Midyear</b>
	<b>£m</b>	<b>£m</b>
<b>Borrowing requirement</b>		
Capital Financing Requirement	754.0	738.5
Less:		
- Long-term liabilities	(127.0)	(125.7)
- Existing borrowing	(387.0)	(397.1)
- Cap Ex to be financed by borrowing (1)	(29.0)	(49.6)
- Replenishment/Replacement borrowing (2)	(49.0)	48.7
<b>Internal borrowing (A)</b>	<b>162.0</b>	<b>214.8</b>
Cash and cash equivalents	5.0	5.0
Fixed investments	5.0	4.5
<b>Y/E investment balances (B)</b>	<b>10.0</b>	<b>9.5</b>
<b>Cash deployed (A+B)</b>	<b>172.0</b>	<b>224.3</b>
comprising:		
- Forecast earmarked reserves	120.0	170.0
- Forecast working capital	52.0	54.3
<b>Borrowing summary:</b>		
<b>2015/16 borrowing requirement (1+2)</b>	<b>78.0</b>	<b>(0.9)</b>

- 2.5** Chart 3 shows how current borrowing compares with the prudential indicators and shows that borrowing has been managed within these limits. The authorised limit was set at £485m and the operational boundary at £460m.



- 2.6** Standard borrowing rates from the PWLB in Chart 4 below have slightly increased over the first half of the year. Since the start of the financial year, rates are higher overall, with 25–50 year rates up by approximately 15 basis points. This firming up of rates has discouraged the Council from borrowing, especially as there has been no immediate demand for the cash from a liquidity perspective. Treasury officers therefore continue to monitor these rates, with a view to borrowing when rates dip.





- 2.7** Although the Council always has the option of rescheduling (ie. redeeming old debt and replacing it with new debt) its existing long-term PWLB debt, it remains unlikely that this will occur in the near future, given the PWLB's current redemption policy which generally means that local authorities pay a large premium to reschedule. In practice, the Council's policy is to let all debt mature naturally.



**REPORT OF THE CHIEF EXECUTIVE****COUNTY BOUNDARY REVIEW – FINAL RECOMMENDATIONS FOR NEW  
ELECTORAL ARRANGEMENTS****Purpose of the Report**

1. To inform Council of the final recommendations of the Local Government Boundary Commission for England (“the Commission”) on new electoral arrangements for the County Council.

**Information and Advice**

2. Both Full Council and Policy Committee have considered and commented on the Boundary Review process since its commencement in March 2014. This includes consideration of the draft recommendations made by the Boundary Commission in July 2015.
3. The Commission has now published its final recommendations and these were formally issued to the Council on 17 November. The Commission’s report detailing their recommendations and a summary document are attached as **Appendix A & B** respectively – these are also available via the following link to the Commission’s website:-

[www.lgbce.org.uk/current-reviews/east-midlands/nottinghamshire/nottinghamshire-county-council](http://www.lgbce.org.uk/current-reviews/east-midlands/nottinghamshire/nottinghamshire-county-council)

4. The Commission’s draft recommendations have been amended in response to various issues raised within the consultation process. Such amendments are detailed within the final recommendations report and are specifically highlighted within the Commission’s press release (see **Appendix C**).
5. The Council currently has 67 Councillors representing 44 single member divisions, 10 two member divisions and 1 three member division. The Commission’s draft recommendations proposed that the Council should have 66 Councillors representing 48 single member divisions and 9 two member Divisions. The final recommendations propose that the Council should have 66 Councillors representing 46 single member divisions and 10 two member divisions.
6. There is no further consultation on these final recommendations and the changes proposed will now require implementation by order subject to Parliamentary scrutiny. A draft Order (the legal document which brings into force the recommendations) will be laid in Parliament and will provide for the new electoral arrangements to be implemented at the County Council elections in 2017.

7. Maps are being produced to show the current electoral divisions and the finalised divisions recommended by the Commission. Copies of these will be produced and made available for each Group and for non-aligned Members and will be published on the Council's website.

### **Other Options Considered**

8. None – these are the final recommendations of the Commission.

### **Reasons for Recommendation**

9. To update Council on this final stage in the boundary review process.

### **Statutory and Policy Implications**

10. This report has been compiled after consideration of implications in respect of crime and disorder, finance, human resources, human rights, the NHS Constitution (public health services), the public sector equality duty, safeguarding of children and adults at risk, service users, sustainability and the environment and ways of working and where such implications are material they are described below. Appropriate consultation has been undertaken and advice sought on these issues as required.

### **Financial Implications**

11. The Commission's proposals will result in modest savings in the Members' Allowances and the Councillors' Divisional Fund budgets.

### **RECOMMENDATION**

- 1) That the Commission's final recommendations on new electoral arrangements for the County be noted.

**Anthony May**  
**Chief Executive**

**For any enquiries about this report please contact: Keith Ford, Team Manager, Democratic Services 0115 9772590/ [keith.ford@nottsc.gov.uk](mailto:keith.ford@nottsc.gov.uk)**

### **Constitutional Comments (SLB – 17/11/15)**

13. Council is the appropriate body to consider the content of this report.

### **Financial Comments (SES – 17/11/15 )**

14. The financial implications are set out in the report.

## **Background Papers and Published Documents**

Except for previously published documents, which will be available elsewhere, the documents listed here will be available for inspection in accordance with Section 100D of the Local Government Act 1972.

- Report to Full Council – 18 September 2014 (previously published)  
[Boundary Review - Report to Full Council - 18 September 2014](#)
- Report to Policy Committee – 11 February 2015 (previously published)  
[Boundary Review - Report to Policy Committee - 11 February 2015](#)
- Report to Full Council – 9 July 2015 (previously published)  
[Boundary Review - Report to Full Council - 9 July 2015](#)

## **Electoral Divisions and Members Affected**

- All



# Final recommendations on the new electoral arrangements for Nottinghamshire County Council

Electoral review

November 2015

## **Translations and other formats**

For information on obtaining this publication in another language or in a large-print or Braille version please contact the Local Government Boundary Commission for England:

Tel: 0330 500 1525

Email: [reviews@lgbce.org.uk](mailto:reviews@lgbce.org.uk)

The mapping in this report is reproduced from OS mapping by the Local Government Boundary Commission for England with the permission of the Controller of Her Majesty's Stationery Office, © Crown Copyright. Unauthorised reproduction infringes Crown Copyright and may lead to prosecution or civil proceedings.



# Contents

Summary	1
1 Introduction	3
2 Analysis and final recommendations	5
Submissions received	5
Electorate figures	6
Council size	6
Division patterns	7
Draft recommendations	7
Final recommendations	7
Detailed divisions	8
Ashfield District	9
Bassetlaw District	11
Broxtowe Borough	14
Gedling Borough	19
Mansfield District	20
Newark & Sherwood District	21
Rushcliffe Borough	27
Conclusions	33
Parish electoral arrangements	33
3 What happens next?	35

## Appendices

A Table A1: Final recommendations for Nottinghamshire County Council	36
B Submissions received	41
C Glossary and abbreviations	44



# Summary

## Who we are

The Local Government Boundary Commission for England (LGBCE) is an independent body set up by Parliament. We are not part of government or any political party. We are accountable to Parliament through a committee of MPs chaired by the Speaker of the House of Commons.

Our main role is to carry out electoral reviews of local authorities throughout England.

## Electoral review

An electoral review examines and proposes new electoral arrangements for a local authority. A local authority's electoral arrangements decide:

- How many councillors are needed
- How many wards or electoral divisions should there be, where are their boundaries and what should they be called
- How many councillors should represent each ward or division

## Why Nottinghamshire?

We are conducting an electoral review of Nottinghamshire County Council as the Council currently has high levels of electoral inequality where some councillors represent many more or many fewer voters than others. This means that the value of each vote in county council elections varies depending on where you live in Nottinghamshire. Overall, 33% of divisions currently have a variance of more than 10% from the average for the county. Kirkby in Ashfield South division currently has 26% more electors than the average for Nottinghamshire.

## Our proposals for Nottinghamshire

Nottinghamshire County Council currently has 67 councillors. Based on the evidence we received during previous phases of the review, we considered the retention of a council size of 67 members. However, in drawing up division arrangements we identified that a council size of 66 provided a better allocation of councillors between the districts in the county. We consider that a reduction in council size by one to 66 members will enable the Council to continue to discharge its roles and responsibilities effectively.

## Electoral arrangements

Our final recommendations propose that Nottinghamshire County Council's 66 councillors should represent 46 single-member divisions and 10 two-member divisions. Three of our proposed 56 divisions would have an electoral variance of greater than 10% from the average for the county by 2020.

**We have now finalised our recommendations for electoral arrangements for Nottinghamshire.**

# 1 Introduction

1 This electoral review is being conducted following our decision to review Nottinghamshire County Council's ('the Council's') electoral arrangements to ensure that the number of voters represented by each councillor is approximately the same across the county.

## What is an electoral review?

2 Our three main considerations in conducting an electoral review are set out in legislation<sup>1</sup> and are to:

- Improve electoral equality by equalising the number of electors each councillor represents
- Reflect community identity
- Provide for effective and convenient local government

3 Our task is to strike the best balance between them when making our recommendations. Our powers, as well as the guidance we have provided for electoral reviews and further information on the review process, can be found on our website at [www.lgbce.org.uk](http://www.lgbce.org.uk)

## Consultation

4 We wrote to the Council, as well as other interested parties, inviting the submission of proposals on council size. We then held two periods of consultation: first on division patterns for the county and secondly on our draft recommendations. The submissions received during our consultations have informed our final recommendations.

This review was conducted as follows:

Stage starts	Description
21 October 2014	Council size decision
28 October 2014	Invitation to submit proposals for division arrangements to LGBCE
10 February 2015	LGBCE's analysis and formulation of draft recommendations
9 June 2015	Publication of draft recommendations and consultation
11 August 2015	Analysis of submissions received and formulation of final recommendations
17 November 2015	Publication of final recommendations

<sup>1</sup> Schedule 2 to the Local Democracy, Economic Development and Construction Act 2009.

## How will the recommendations affect you?

5 The recommendations will determine how many councillors will serve on the Council. They will also decide which division you vote in, which other communities are in that division and, in some instances, which parish council wards you vote in. Your division name may also change, as may the names of parish or town council wards in the area. The names or boundaries of parishes will not change as a result of our recommendations.

## What is the Local Government Boundary Commission for England?

6 The Local Government Boundary Commission for England is an independent body set up by Parliament under the Local Democracy, Economic Development and Construction Act 2009.

Members of the Commission are:

Max Caller CBE (Chair)  
Professor Colin Mellors (Deputy Chair)  
Dr Peter Knight CBE DL  
Alison Lowton  
Sir Tony Redmond  
Professor Paul Wiles CB

Chief Executive: Jolyon Jackson CBE

## 2 Analysis and final recommendations

7 Legislation states that our recommendations are not intended to be based solely on the existing number of electors<sup>2</sup> in an area, but also on estimated changes in the number and distribution of electors likely to take place over a five-year period from the date of our final recommendations. We must also try to recommend strong, clearly identifiable boundaries for the divisions we put forward at the end of the review.

8 In reality, the achievement of absolute electoral fairness is unlikely to be attainable and there must be a degree of flexibility. However, our approach is to keep variances in the number of electors each councillor represents to a minimum.

9 In seeking to achieve electoral fairness, we work out the average number of electors per councillor by dividing the electorate by the number of councillors as shown on the table, below.

	<b>2014</b>	<b>2020</b>
Electorate of Nottinghamshire	600,474	638,195
Number of councillors	66	66
Average number of electors per councillor	9,098	9,670

10 Under our final recommendations, three of our proposed divisions will have an electoral variance greater than 10% from the average for the county by 2020. The outliers are Newstead and Blidworth which would each have 11% fewer electors than the county average by 2020 and Southwell which would have 11% more. We are therefore satisfied that we have achieved good levels of electoral fairness for Nottinghamshire.

11 Additionally, in circumstances where we propose to divide a parish between borough wards or county divisions, we are required to divide it into parish wards so that each parish ward is wholly contained within a single borough ward or county division. We cannot make amendments to the external boundaries of parishes as part of an electoral review.

12 These recommendations cannot affect the external boundaries of Nottinghamshire County Council or result in changes to postcodes. Nor is there any evidence that the recommendations will have an adverse effect on local taxes, house prices, or car and house insurance premiums. The proposals do not take account of parliamentary constituency boundaries, and we are not, therefore, able to take into account any representations which are based on these issues.

### Submissions received

13 See Appendix B for details of submissions received. All submissions may be inspected at our offices (by appointment). All submissions received can also be viewed on our website at [www.lgbce.org.uk](http://www.lgbce.org.uk)

---

<sup>2</sup> Electors refer to the number of people registered to vote, not the whole adult population.

## Electorate figures

14 As prescribed in the 2009 Act, the Council submitted electorate forecasts for 2020, a period five years on from the scheduled publication of our final recommendations in November 2015. These forecasts were broken down to polling districts and projected an increase in the electorate of approximately 6% to 2020.

15 During the initial stages of the review, the Council provided a number of revisions to its forecast figures to reflect more up-to-date information that became available as the district councils drew up new polling district information in districts that had been subject to recent electoral reviews. The Council's electoral forecasts indicated significant growth in Ashfield, Broxtowe, Mansfield, Newark & Sherwood and Rushcliffe and less growth in Bassetlaw and Gedling.

16 Having considered the information provided by the Council, we are satisfied that the projected figures are the best available at the present time and these figures form the basis of our final recommendations.

## Council size

17 Prior to consultation on division boundaries, Nottinghamshire County Council submitted a proposal that the existing council size of 67 members be retained. We also received a joint proposal from the Opposition Groups on the Council (which includes the Conservative Group, Liberal Democrat Group and Independent Group) for an increase in council size of four, from 67 to 71.

18 On balance, we considered that the Council's submission for 67 members provided more persuasive evidence than that of the Opposition Groups. Having considered the evidence we invited proposals for division arrangements based on a council size of 67.

19 We explained to all interested parties from the outset that this council size figure provided a context for local stakeholders to submit their views on the wider electoral arrangements. Furthermore, we made clear that this council size figure could be slightly adjusted in order to provide for division patterns that provide a better balance between the statutory criteria.

20 In the development of our draft recommendations we investigated whether a council size of 67 provided the best allocation of councillors to the seven districts in Nottinghamshire. Our investigations indicated that under a council size of 67, Gedling should be allocated 9.49 councillors, but in the county-wide proposal it had been given 10 councillors. Therefore, this meant that all the divisions in Gedling were likely to be over-represented. Our investigations indicated that 66 councillors would provide a better allocation of councillors between the districts in the county. Under a council size of 66, Gedling would be allocated 9.35 councillors. We have therefore based our draft recommendations on a council size of 66.

21 In response to the draft recommendations we received no significant comments on council size and have therefore decided to confirm a council size of 66 for Nottinghamshire County Council as final.



## Division patterns

22 During consultation on division patterns, we received 62 submissions, including one county-wide proposal. The Conservative Group on the Council put forward specific proposals for Bassetlaw and Ashfield districts and provided comments for the remainder of the county. The remainder of the submissions provided localised comments for division arrangements for particular districts or specific areas of districts.

23 Having carefully considered the proposals received, we based our draft recommendations broadly on the Council's proposals, but subject to amendments in all districts. These amendments sought to reflect other comments received, strengthen boundaries and/or further improve levels of electoral equality.

24 Our draft recommendations were for 48 single-member divisions and nine two-member divisions. We considered that our draft recommendations provided for good electoral equality while reflecting community identities and interests where we received such evidence during consultation.

## Draft recommendations

25 We received 209 submissions during consultation on our draft recommendations. These provided a mixture of support and objections across the county. These are detailed in Appendix B.

## Final recommendations

### **Ashfield**

26 We received support and objections for our draft recommendation for three single-member divisions for Hucknall. The support for single-member divisions argued that they used clear boundaries and ensured that individual councillors were more accountable to the electorate. The objections argued in support of the existing three-member division, stating that it enables councillors to cover each other and reflects the fact that Hucknall is a cohesive community. On balance, we are not persuaded that the existing three-member division better reflects the area and are therefore confirming the three single-member wards as part of the final recommendations.

### **Bassetlaw**

27 We received significant objections to our draft recommendation to place Beckingham and Saundby parishes in Tuxford division, with respondents citing links, including the use of community facilities in the Misterton division. Although transferring these parishes would worsen electoral equality it would improve coterminosity and better reflect communities. We are therefore adopting this amendment as part of our final recommendations.

### **Broxtowe**

28 We received objections to our draft recommendations throughout Broxtowe. We received alternative proposals in the south around the areas of Stapleford and Bramcote, and in the north around Brinsley, Eastwood and Greasley. We have

decided not to modify our draft recommendations in the south of the districts as the alternative proposals included a division that had no clear community links. We are proposing revisions to our three divisions in the north area to better reflect community identities.

### **Gedling**

29 In Gedling we received objections to the draft recommendations, particularly in the Gedling area. We also received a district-wide scheme that proposed changes to all divisions except Newstead, and in part sought to resolve the objections to the Gedling area. This proposal had a number of relatively poor variances and also created a division that contained areas with no internal road links. We have therefore decided not to modify our draft recommendations and are confirming them as final.

### **Newark & Sherwood**

30 We received objections to our draft recommendations in a number of areas in Newark & Sherwood. A large number of respondents objected to the proposal to include Oxtun parish in the Blidworth division. We also received an objection to the inclusion of Coddington parish in the Newark East division, with a request to transfer it to the Collingham division. As a result of the evidence received we are proposing changes to the Blidworth, Collingham, Newark East and Southwell divisions.

### **Rushcliffe**

31 In Rushcliffe we received significant objections to the Bingham West and Ruddington divisions. We propose amendments to the Bingham West division to better reflect communities. In the Ruddington and Soar Valley areas we have explored options to address the concerns raised and concluded that there is no viable single-member option that addresses the concerns of the parishes that wish to be included in the Soar Valley. We are therefore proposing a two-member Leake & Ruddington division, comprising the draft recommendations Ruddington and Soar Valley divisions.

## **Detailed divisions**

32 The tables on pages 9 - 32 detail our final recommendations for each area of Nottinghamshire. Where we have moved away from our draft recommendations, we have outlined how the proposed division arrangements reflect the three statutory criteria of:

- Equality of representation
- Reflecting community interests and identities
- Providing for convenient and effective local government

## Ashfield District

Division name	Number of Cllrs	Variance 2020	Description	Detail
Ashfields	1	-6 %	This division comprises Ashfields, Larwood and Leamington district wards.	We received no significant comments in response to the draft recommendations and are therefore confirming the Ashfields division as final.
Hucknall North	1	-6%	This division comprises Hucknall North ward and part of Hucknall South ward.	<p>In response to the draft recommendations we received objections and support to our draft recommendations for the Hucknall area. A number of responses expressed a preference for the existing three-member Hucknall division, arguing that having three members would provide cover for each councillor and reflect the cohesive nature of the Hucknall area. They argued that it was the existing division and had worked well.</p> <p>We also received support for our proposed single-member divisions, with respondents arguing that they used strong boundaries and also provided better accountability.</p> <p>We noted that a number of arguments in support and opposition to our draft recommendations were based on principles in favour of either single- or multi-member divisions. As detailed in our guidance, we do not base decisions on the principle of either a single- or multi-member division. We have therefore considered the evidence received in the context of the statutory criteria.</p> <p>We recognise that arguments were made that dividing Hucknall between divisions would not reflect community identities. Whilst we note that people have a local affinity with Hucknall we were also mindful that Hucknall had recently been divided into four wards as part of our recent electoral review of Ashfield District</p>
Hucknall South	1	-9%	This division comprises Hucknall Central ward and part of Hucknall South ward.	
Hucknall West	1	-8%	This division comprises Hucknall West ward and part of Hucknall South ward.	

				<p>Council. We therefore considered that as Hucknall is divided at district ward level it could also be divided at county division level.</p> <p>We do consider that our three single-member divisions for Hucknall do provide a good balance between the criteria, particularly that they have clear boundaries (as was supported in representations made during the consultation) and provide for reasonable levels of electoral equality. We are therefore confirming the three single-member wards for Hucknall as final.</p>
Kirkby North	1	1%	This division comprises Abbey Hill and Summit wards, and part of Kingsway ward.	We received no significant comments in response to the draft recommendations and are therefore confirming the Kirkby North division as final.
Kirkby South	1	5%	This division comprises Annesley & Kirkby Woodhouse and Kirkby Cross & Portland ward, and part of Kingsway ward.	We received no significant comments in response to the draft recommendations and are therefore confirming the Kirkby South division as final.
Selston	1	9%	This division comprises Jacksdale, Selston and Underwood wards.	We received no significant comments in response to the draft recommendations and are therefore confirming the Selston division as final.
Sutton Central & East	1	-4%	This division comprises Central & New Cross and Sutton Junction & Harlow Wood wards, and part of St Mary's ward.	We received no significant comments in response to the draft recommendations and are therefore confirming the Sutton Central & East division as final.
Sutton North	1	2%	This division comprises The Dales, Skegby and Stanton Hill & Teversal wards.	We received no significant comments in response to the draft recommendations and are therefore confirming the Sutton North division as final.

Sutton West	1	4%	This division comprises Carsic and Huthwaite & Brierley wards, and part of St Mary's ward.	We received no significant comments in response to the draft recommendations and are therefore confirming the Sutton West division as final.
-------------	---	----	--	--

### **Bassetlaw District**

<b>Division name</b>	<b>Number of Cllrs</b>	<b>Variance 2020</b>	<b>Description</b>	<b>Detail</b>
Blyth & Harworth	1	5%	This division comprises Harworth and Langold wards, and Blyth and Styrrup with Oldcotes parishes of Blyth ward.	We received no significant comments in response to our draft recommendations and are therefore confirming our Blyth & Harworth division as final.
Misterton	1	10%	This division comprises Beckingham, Clayworth, Everton, Misterton and Ranskill wards, and Scrooby parish of Blyth ward and Lound and Sutton parishes of Sutton ward.	<p>We received a number of responses objecting to our proposals to included Beckingham and Saundby parishes in our Tuxford division. Respondents highlighted the 'long-established' links between Beckingham and the Misterton area, including schools, churches and other community facilities, such as the swimming pool at Misterton Primary School.</p> <p>Transferring these parishes would worsen electoral equality in Misterton and Tuxford divisions from 1% fewer and 3% more electors than the county average in 2020 to 10% more and 9% fewer, respectively. However, on balance in light of persuasive evidence of local community links we propose making this amendment as part of our final recommendations.</p>
Retford East	1	-1%	This division comprises East Retford East and East Retford South wards.	We received no significant comments in response to the draft recommendations and are therefore confirming the Retford East division as final.

Retford West	1	1%	This division comprises East Retford North and East Retford West ward, and Babworth and Barnby Moor parishes of Sutton ward.	We received no significant comments in response to the draft recommendations and are therefore confirming the Retford West division as final.
Tuxford	1	-9%	This division comprises East Markham, Rampton, Sturton and Tuxford & Trent wards.	As discussed in the Misterton section (above), we are including Beckingham and Saundby parishes in our Misterton division. We did not receive any other significant comments in relation to the Tuxford division and are therefore confirming the modified Tuxford division as final.
Worksop East	1	4%	This division comprises Worksop East ward, part of Worksop North ward, part of Worksop North West ward, and part of Worksop South East ward.	<p>We received a proposal to modify this division, suggesting that the division boundary should be tied to the boundaries of wards of Bassetlaw District Council. It was argued that the proposed Worksop East division divided the Manton area which has strong boundaries and also distinct community issues.</p> <p>We note the evidence for not dividing the Manton area, but the proposal to base the division on Worksop East and Worksop South East wards would create a division with 12% more electors than the county average. Although the evidence provided was good, the alternate proposal would require a significant redrawing of the boundaries throughout Worksop and when combined with the poor electoral equality that the proposed Worksop East division would have, we do not consider there to be persuasive evidence to include this proposal and the consequential modifications as part of our final recommendations.</p> <p>We did not receive any other significant comments on this area so we are therefore confirming our Worksop East division as final.</p>

Worksop North	1	5%	This division comprises Carlton and Worksop North East wards, and part of Worksop North ward.	We received no significant comments in response to the draft recommendations and are therefore confirming the Worksop North division as final.
Worksop South	1	5%	This division comprises Welbeck and Worksop South wards, and part of Worksop South East ward.	We received no significant comments in response to the draft recommendations and are therefore confirming the Worksop South division as final.
Worksop West	1	7%	This division comprises part of Worksop North ward and part of Worksop North West ward.	We received no significant comments in response to the draft recommendations and are therefore confirming the Worksop West division as final.

### Broxtowe Borough

Division name	Number of Cllrs	Variance 2020	Description	Detail
Beeston Central & Rylands	1	-3%	This division comprises Beeston Central and Beeston Rylands wards, and part of Beeston West ward.	We received a number of objections to our proposals in the Stapleford and Bramcote area, including a proposal for alternate boundaries to the Beeston Central & Rylands division. However, as described in the Stapleford & Broxtowe Central section (below), we have not included this alternative proposal as part of our final recommendations. In light of no other significant comments we are confirming our Beeston Central & Rylands division as final.
Bramcote & Beeston North	1	6%	This division comprises Beeston North ward, part of Beeston West ward, and part of Bramcote ward.	We received a number of objections to our proposal to split the Bramcote area, with part remaining in a division with Stapleford while the rest is in a division with Beeston. We note the arguments that the area of Bramcote to the west of the roundabout is considered part of Bramcote and that the roundabout does not provide a significant barrier. In addition,

				<p>respondents argued that Bramcote and Stapleford have links and share a number of services.</p> <p>We received requests to retain Stapleford and Bramcote in a single division, as at present. We considered this option as part of our draft recommendations and noted that while it would be possible to create a two-member division covering this area it is not possible to accommodate this while securing good levels of electoral equality elsewhere, particularly to the north. Although we have received evidence for the links between the two areas, we remain unable to propose a division combining them as we have, and have not received suggestions for alternative proposals for the surrounding area.</p> <p>We did receive a proposal that would retain the whole of Bramcote in a single division; however, we are not including this proposals in our final recommendations as it was dependent on the creation of a division combining part of Stapleford with an area of Toton, but without any direct road links. Although it was argued that the area of Stapleford and Toton would share similar issues with the advent of High Speed Two, we considered the lack of direct links did not make this viable.</p> <p>On balance, we are confirming the draft recommendations for Bramcote &amp; Beeston North as final.</p>
Eastwood	1	4%	This division comprises Eastwood Hall, Eastwood Hilltop and Eastwood St Mary's wards.	<p>We received objections to the proposed Eastwood &amp; Brinsley division and also the proposed division in the surrounding area. The objections centred on the proposal to split Eastwood parish and the Eastwood Hilltop ward of Broxtowe Borough Council between three divisions. Respondents argued that the proposal divided the Eastwood area and that splitting the area</p>



				<p>between three divisions would create confusion locally. They also objected to a division linking parts of Eastwood with Kimberley.</p> <p>We received a number of objections to the inclusion of Brinsley parish in a division with Eastwood. Respondents argued that Brinsley has a number facilities itself and that they go beyond Eastwood for larger services. They cited links to Greasley. We also received a response that suggested that Brinsley residents do in fact use services in Eastwood, although this was refuted by another respondent.</p> <p>We received a number of alternative proposals that sought to address the issues here and in the surrounding area including Greasley, Kimberley and Nuthall. Two options retained the link between Eastwood and Brinsley but excluded the Coach Drive and Brunel Avenue areas of Greasley parish that were recently transferred to the Eastwood Hall ward as part of the Broxtowe Borough Council electoral review. Our draft recommendations sought to retain these areas in an Eastwood division, so we are not proposing these alternatives.</p> <p>A third alternative included Brinsley in a division with the Greasley parish (excluding the Coach Drive and Brunel Avenue areas), while retaining the whole of Eastwood parish and the three Eastwood borough wards in a single division. We discounted such an option during our deliberations on the draft recommendations because Brinsley does not have direct road links to Greasley. In addition, it has a knock-on effect of creating a Nuthall &amp; Kimberley division elsewhere with 10% more electors than the county average. However, we note that Brinsley does have good road links to Greasley running just</p>
--	--	--	--	--

				<p>outside the borough in neighbouring Ashfield and that the proposal secures good electoral equality. We are of the view that this alternative proposal reflects the evidence received and would better reflect the statutory criteria.</p> <p>We are therefore proposing an Eastwood division comprising Eastwood Hall, Eastwood Hilltop and Eastwood St Mary's wards. This division would have 4% more electors than the county average by 2020.</p>
Greasley & Brinsley	1	4%	This division comprises Brinsley and Greasley wards and Greasley Watnall parish ward of Watnall & Nuthall West ward.	<p>As stated in the Eastwood section (above), we received a number of objections to the inclusion of Brinsley in a division with Eastwood. We also received objections to the division of Greasley parish between divisions.</p> <p>As stated in the Eastwood section we received a number of alternative proposals that sought to address these issues for this area, but rejected some as they did not reflect the inclusion of parts of Greasley parish to the Eastwood Hall ward as part of the recent Broxtowe Borough Council electoral review. We are adopting the proposal to include Brinsley and Greasley in a division. Although we excluded this option during our deliberations on the draft recommendations as these parishes do not have direct road links within the borough, in light of the evidence received we have been persuaded that they should be in the same division, utilising the road links a short way through Ashfield Borough.</p> <p>The Greasley &amp; Brinsley division would have 4% more electors than the county average by 2020.</p>
Nuthall & Kimberley	1	10%	This division comprises Kimberley ward and the Nuthall parish areas of	<p>As stated in the Eastwood section (above), we received a number of objections to our draft recommendation to include part of Eastwood in a division with Kimberley. In response to</p>

			Nuthall East & Strelley and Watnall & Nuthall West wards.	<p>proposed modifications to Eastwood, Greasley and Brinsley, proposals were put forward for a Nuthall &amp; Kimberley division. This would comprise Kimberley ward and the Nuthall parish areas of Nuthall East &amp; Strelley and Watnall &amp; Nuthall West wards.</p> <p>We note that this division would have 10% more electors than the county average by 2020; however, it avoids the transfer of parts of Eastwood to a division with Kimberley and creates a more compact Nuthall &amp; Kimberley division. We are therefore adopting this a part of the final recommendations.</p>
Stapleford & Broxtowe Central	2	-6%	This division comprises Awsworth, Cossall & Trowell, Stapleford North, Stapleford South East and Stapleford South West wards, part of Bramcote ward, and part of Nuthall & Strelley ward.	<p>As stated in the Bramcote &amp; Beeston North section (above), we received a number of requests to retain Stapleford and Bramcote in a single division, as at present, but have not proposed this. While it would be possible to create a two-member division covering this area it is not possible to accommodate this while securing good levels of electoral equality elsewhere, particularly to the north.</p> <p>In addition, we also received a proposal that divided Stapleford into two divisions with one division covered by Stapleford North and Awsworth, Cossall &amp; Trowell wards and Strelley parish of Nuthall East &amp; Strelley ward and a second comprising Stapleford South East and Stapleford South West wards and part of Toton. As stated above, we have not included this proposal in our final recommendations as we do not consider that the division comprising Stapleford South East and Stapleford South West wards with Toton reflects communities. We note the argument that these areas will be affected by High Speed Two, but do not consider this sufficient to justify a division with no internal road links. Therefore, we are not adopting this proposal.</p>

				<p>Finally, we note that a number of respondents objected to the proposed name for Stapleford &amp; Broxtowe Central. There were no consistent suggestions, although some respondents suggested the name should reflect the other villages within the division. While we note this concern, we consider that a name for example reflecting Stapleford, Awsworth, Cossall, Trowell and Strelley is unwieldy and long. We are therefore retaining the name Stapleford &amp; Broxtowe Central in our final recommendations.</p>
Toton, Chilwell & Attenborough	2	3%	<p>This division comprises Attenborough &amp; Chilwell East, Chilwell West and Toton &amp; Chilwell Meadows wards, and part of Beeston West ward.</p>	<p>As stated in the Bramcote &amp; Beeston North section (above), we did receive a proposal to modify the division pattern in this area, but we rejected this because of the creation of a division comprising part of Toton with Stapleford which we do not consider would reflect community identities.</p> <p>We also received comments objecting to the fact that the division contains part of Beeston, but that this is not reflected in the division name. As stated in the Stapleford &amp; Broxtowe Central section (above), while we acknowledge the concerns about reflecting the names of areas within a proposed division, we have to balance this against creating unwieldy and long names. We are therefore retaining the name Toton, Chilwell &amp; Attenborough in our final recommendations.</p> <p>We received no other significant comments on this area and are confirming the Toton, Chilwell &amp; Attenborough division.</p>

## Gedling Borough

Division name	Number of Cllrs	Variance 2020	Description	Detail
Arnold North	2	4%	This division comprises Coppice and Plains wards, part of Bestwood St Albans ward, part of Ernehale ward, and part of Redhill district ward.	<p>In Gedling Borough we received a number of objections to the proposed Calverton division, particularly the proposal to transfer part of Gedling to this division. Objections focused on the lack of community links between the area to the north of Arnold Road with the rural Calverton area and also that the boundary divided All Hallows CoE Church from All Hallows CoE Primary School.</p> <p>We also received proposals for a totally revised set of division boundaries for the borough, with the exception of Newstead division. These proposals focused in part on the concerns about the split of the Gedling area, but also concerns that the draft recommendations split part of the Carlton area with part of the area including in and Arnold division.. There were also concerns that the draft recommendations split the Netherfield area. Finally, the proposal acknowledged that it would transfer an area of Burton Joyce parish to the Calverton division that has no direct road links within the borough.</p> <p>We also received a number of objections to the proposal to transfer part of Burton Joyce to a division with Calverton, with respondents highlighting the lack of direct links within the borough to the Calverton area.</p> <p>We have given careful consideration to the evidence received. We note the objections to the draft proposal to include part of the Gedling area in a division with Calverton. However, we do not consider that the alternative to include part of Burton Joyce</p>
Arnold South	2	7%	This division comprises Daybrook, Porchester and Woodthorpe wards, part of Ernehale ward, and part of Phoenix wards.	
Calverton	1	6%	This division comprises Dumbles ward, part of Calverton ward, and part of Gedling ward.	
Carlton East	1	4%	This division comprises Colwick and Trent Valley wards, part of Gedling ward, and part of Netherfield ward.	
Carlton West	2	6%	This division comprises Carlton, Carlton Hill and Cavendish wards, part of Gedling ward, part of Netherfield ward, and part of Phoenix district ward.	
Newstead	1	-11%	This division comprises Newstead Abbey ward, part of Bestwood St Albans ward,	

			<p>part of Calverton ward, and part of Redhill ward.</p>	<p>parish provides any stronger division pattern, particularly given the lack of internal road links within the borough. Although occasionally we will propose divisions with no internal road links, such as in Greasley &amp; Brinsley (above) and under the draft recommendations for Soar Valley (below). In the case of Brinsley, this is because there was local support for it, and in the Soar Valley a lack of alternative options. In this case, while we acknowledge the limitations of the alternative, we consider that the draft recommendation better reflect the statutory criteria.</p> <p>In addition, these alternative proposals would require a very substantial redrawing of the draft recommendations and we do not consider that persuasive evidence has been provided to justify this. Although we note the concerns about splitting areas, particularly Netherfield and part of Carlton, this is unavoidable if trying to secure good electoral equality while reflecting other comments received.</p> <p>We are therefore confirming the draft recommendations for Gedling as final.</p>
--	--	--	--	---

## Mansfield District

Division name	Number of Cllrs	Variance 2020	Description	Detail
Mansfield East	2	-1%	This division comprises Holly, Kingsway, Lindhurst, Ling Forest, Maun Valley, Newlands, Oak Tree and Ransom Wood wards.	We received no significant comments on the draft recommendations for Mansfield and are therefore confirming them as final.

Mansfield North	2	-6%	This division comprises Hornby, Manor, Park Hall, Peafields, Sherwood, Woodhouse, Woodlands and Yeoman Hill wards.	
Mansfield South	2	2%	This division comprises Berry Hill, Carr Bank, Eakring, Kings Walk, Newgate, Oakham, Racecourse and Sandhurst wards, and part of Portland ward.	
Mansfield West	2	-5%	This division comprises Abbott, Brick Kiln, Broomhill, Bull Farm & Pleasley Hill, Grange Farm, Ladybrook and Penniment wards, and part of Portland ward.	
Warsop	1	0%	This division comprises Market Warsop, Meden, Netherfield and Warsop Carrs wards.	

#### Newark & Sherwood District

Division name	Number of Cllrs	Variance 2020	Description	Detail
Balderton	1	3%	This division comprises Balderton South ward, part of Balderton North & Coddington ward, and Alverton, Cotham, Fernwood, Kilvington and Staunton	We received objections to our draft recommendations, particularly to the creation of additional parish wards in Balderton parish and the division of the parish between three divisions. It was argued that the parish is entitled to a single councillor.

			parishes of Farndon & Fernwood ward.	<p>We have given consideration to the evidence and while we note that the parish would be entitled to a single councillor it is not possible to propose such a division while securing good electoral arrangements, with good electoral equality and strong boundaries in the surrounding area. Therefore, we do not propose creating a division based solely on Balderton parish.</p> <p>Finally, we note the concerns about the creation of further parish wards, but consider these necessary to secure good electoral equality, particularly in the Newark West division. We are therefore confirming the Balderton division as final.</p>
Blidworth	1	-11%	This division comprises Rainworth South & Blidworth ward and Rainworth parish of Rainworth North & Rufford ward.	<p>We received significant objections to the inclusion of Oxtun parish in the Blidworth division. Respondents argued that Oxtun parish has strong community links to other parishes in the Dover Beck ward and also uses facilities in Southwell. They stated that they had no community links to Blidworth and that the road links are limited.</p> <p>We note these objections and consider that there is evidence of Oxtun's links to the Dover Beck area of the Southwell division. However, we also note that transferring Oxtun parish would worsen electoral equality in Blidworth to 11% fewer electors than the county average by 2020 and worsen it in Southwell from 3% more to 7% more. On balance, we consider that this relatively poor level of electoral equality can be justified by the community links indicated between these areas. We are therefore including Oxtun parish in our Southwell division. The modified Blidworth division would have 11% fewer electors than county average by 2020.</p>
Collingham	1	1%	This division comprises Bridge and Collingham wards and Barnby in the Willows	We received significant evidence for the inclusion of Coddington parish in the Collingham division, with a small area of the Newark town area transferred to Newark East division in



			and Coddington parishes of Balderton North & Coddington ward.	<p>order to maintain reasonable levels of electoral equality. The evidence received indicated that Coddington parish and the parishes in the Collingham division have shared concerns over highways, gravel extraction and local policing.</p> <p>We consider that persuasive evidence has been provided for the inclusion of Coddington in the Collingham division and that the transfer of a small area of Newark Town from Collingham to the Newark East division would still provide strong boundaries while securing good electoral equality. Transferring these areas would improve electoral equality in Collingham division from 4% fewer to 1% more electors than the county average by 2020, while slightly worsening it in Newark East division from 1% fewer to 3% fewer.</p> <p>Having considered the evidence we are broadly happy with this modification, although we have a concern that it would leave Barnby in the Willows parish isolated. We are therefore including this parish in the Collingham division, along with Coddington parish. This would slightly improve electoral equality in Coddington division to 1% more electors than the county average in 2020, while worsening it to 5% fewer in Newark East division.</p>
Farndon & Trent	1	-9%	This division comprises Castle ward, East Stoke, Elston, Farndon, Hawton, Syerston and Thorpe parishes of Farndon & Fernwood ward and Averham, Bleasby, Fiskerton cum Morton, Kelham,	<p>We received a number of objections to the creation of a division bisected by the river Trent, particularly the inclusion of a part of Newark town to provide a crossing point within the division. It was also argued that Upton parish is better situated in the Southwell division, reflecting local community links.</p> <p>We note these objections and particularly the evidence for the inclusion of Upton parish the Southwell division. However, we have to balance this against our proposal to include Oxtun</p>

			Rolleston and Staythorpe parishes of Trent ward.	<p>parish in the Southwell division. This proposal worsens Southwell from 3% more electors than the county average in 2020 to 7% more and transferring Upton would worsen it further to 11% more, while worsening it in Farndon &amp; Trent to 9% fewer. We also note that it would reduce coterminosity since Upton parish sits in the Trent ward, which is wholly in the Farndon &amp; Trent division.</p> <p>On balance, in light of the community identity evidence we are proposing to include Upton parish in the Southwell division. The revised Farndon &amp; Trent division would have 9% fewer electors than the county average by 2020.</p>
Muskham & Farnsfield	1	8%	This division comprises Bilsthorpe, Farnsfield and Muskham wards; Mickledale parish ward of Rufford parish; Edingley, Halam, Hockerton, Kirklington and Winkburn parishes of Southwell ward; and Carlton-on-Trent, Grassthorpe, Kersall, Kneesall, Maplebeck, Ompton, Ossington, Sutton-on-Trent and Weston parishes of Sutton-on-Trent ward.	<p>We received a mixture of support and objections for this division. It was suggested that the Mickledale parish ward of Rufford parish should be in the Muskham &amp; Farnsfield division, rather than the Sherwood division, reflecting the fact it is in the Bilsthorpe ward. It was also suggested that Egmonton parish would be better situated in the Muskham &amp; Farnsfield division, reflecting its more rural nature and lack of links to Ollerton.</p> <p>We note the suggestion that the Mickledale parish ward of Rufford parish should be in the Muskham &amp; Farnsfield division. Including this area would slightly worsen electoral equality in Muskham &amp; Farnsfield division from 7% more electors than the county average by 2020 to 8% more. It would also worsen electoral equality in Sherwood Forest from 4% fewer to 5% fewer electors.</p> <p>We also note the argument that Egmonton parish should be included in the Muskham &amp; Farnsfield division. While we acknowledge these concerns they must also be balanced against the worsening of electoral equality that would result. If</p>

				<p>we adopted this amendment along with the transfer of Mickledale parish ward, electoral equality in Muskham &amp; Farnsfield would worsen to 11% more electors than the county average by 2020.</p> <p>On balance, we do not consider that there is persuasive evidence to justify this level of electoral equality so we cannot adopt both amendments. Our tour of the area confirmed that the Mickledale parish ward is essentially part of Bilsthorpe and that it should be in this division along with the remainder of Bilsthorpe ward so we are including this amendment as part of the final recommendations.</p>
Newark East	1	-5%	This division comprises part of Balderton North & Coddington ward, and part of Beacon ward.	<p>We received a number of objections to our proposals to create additional parish wards in the Newark town area.</p> <p>We note the concerns about the creation of additional parish wards in the Newark town area, but unfortunately using the existing district and parish wards does not secure good levels of electoral equality and it has been necessary to further divide areas.</p> <p>In addition, as discussed in the Collingham section (above), we received persuasive argument for including Coddington parish in the Collingham division and transferring part of Newark town in the Collingham division to Newark East. We have been persuaded to transfer Coddington parish to Collingham division, in exchange for an area of Newark town. We additionally propose to include Barnby in the Willows parish in our Collingham division to avoid leaving this rural parish isolated. These amendments would worsen electoral equality from 1% fewer electors than the county average by 2020 to 5% fewer.</p>

Newark West	1	-7%	This division comprises Devon ward and part of Beacon ward.	<p>As stated in the Newark East section (above), we received a number of objections to the creation of new parish wards in Newark town as part of our draft recommendations. As explained, using the existing district and parish wards does not secure good levels of electoral equality and it has been necessary to further divide areas.</p> <p>In light of the lack of viable alternative proposals, we are confirming the draft recommendations for Newark West as final.</p>
Ollerton	1	4%	This division comprises Boughton and Ollerton wards and Egmanton and Laxton & Moorhouse parishes of Sutton-on-Trent ward.	<p>As stated in the Muskham &amp; Farnsfield section (above), we received comments arguing that Egmanton parish would be better included in the Muskham &amp; Farnsfield division. However, in light of other modifications to the Muskham &amp; Farnsfield division, we have not included this proposal in our final recommendations.</p> <p>We received no other significant comments on the Ollerton division and are confirming it as final.</p>
Sherwood Forest	1	-5%	This division comprises Edwinstowe & Clipstone ward; and Eakring and Wellow parishes of Rainworth North & Rufford ward and Forest parish ward of Rufford parish.	<p>As stated in the Muskham &amp; Farnsfield section (above), we received comments arguing that Mickledale parish ward of Rufford parish would be better included in the Muskham &amp; Farnsfield division. We are including this amendment as our tour of the area confirmed that it is essentially part of Bilsthorpe and would be better served in a division with the rest of Bilsthorpe. Transferring this area worsens electoral equality in Sherwood Forest from 4% fewer electors than the county average by 2020 to 5% fewer.</p> <p>We received no other significant comments on the Sherwood Forest division and are confirming it as final subject to the modification above.</p>

Southwell	1	11%	This division comprises Dover Beck and Lowdham wards, Upton parish of Trent ward and Halloughton and Southwell parishes of Southwell ward.	<p>We received a mixture of support and objections for this division. As described in the Blidworth section (above), there were significant objections to the inclusion of Oxtun parish in the Blidworth division. Respondents argued that it has stronger links to the Dover Beck area of Southwell. In addition, as discussed in the Farndon &amp; Trent section (above), there was a request to transfer Upton parish to the Southwell division, outlining the area's links to Southwell.</p> <p>Adopting both amendments would worsen electoral equality in Southwell division from 3% more electors than the county average to 11% more. In addition, it worsened electoral equality in Blidworth and Farndon &amp; Trent from 6% fewer and 5% fewer electors than the county average by 2020 to 11% fewer and 9% fewer, respectively.</p> <p>As stated above, we consider persuasive community identity evidence has been provided to include both Oxtun and Upton parishes in the Southwell division. Although electoral equality worsens, we consider the balance with the community identity evidence outweighs this.</p> <p>We are therefore including Oxtun and Upton parishes in the Southwell division and subject to this modification are confirming it as final.</p>
-----------	---	-----	--	--

### Rushcliffe Borough

Division name	Number of Cllrs	Variance 2020	Description	Detail
Bingham East	1	-4%	This division comprises Bingham East, Cranmer and	We received limited comments on our proposals for this division, although one respondent did suggest an amendment.

			<p>Thoroton wards; Wiverton Hall parish of Cropwell district ward; and East Bridgford and Kneeton parishes of East Bridgford ward.</p>	<p>However, this would have significant knock-on effects to the surrounding divisions and we consider that there was insufficient evidence to support this.</p> <p>We are therefore confirming the Bingham East division as final.</p>
Bingham West	1	-8%	<p>This division comprises Bingham West ward; Cropwell Bishop, Cropwell Butler and Tithby parishes of Cropwell ward; Newton parish of East Bridgford ward; and Colston Bassett parish and part of Langer cum Barnstone parish in Nevile &amp; Langer ward.</p>	<p>We received a large number of objections to the inclusion of Shelford parish in the Bingham West division. Respondents cited a lack of direct links to Bingham, instead highlighting a range of community links with the Radcliffe on Trent area. Some respondents suggested that the neighbouring Newton parish was best served in the Bingham West division.</p> <p>We note the evidence and acknowledge that Shelford parish has good links to Radcliffe on Trent. Transferring the parish would worsen electoral equality in Bingham West from 6% fewer electors than the county average by 2020 to 8% fewer. It would also worsen electoral equality in Radcliffe on Trent from 1% more electors than the county average by 2020 to 3% more. However, on balance, we consider that the evidence received is persuasive and supports these levels of electoral equality. We have therefore decided to include Shelford parish in our Radcliffe on Trent division.</p>
Cotgrave	1	-8%	<p>This division comprises Cotgrave ward, Kinoulton and Owthorpe parishes of Nevile &amp; Langer ward, and Clipston, Normanton on the Wolds and Tollerton parishes of Tollerton ward.</p>	<p>We received some support for this division, although a number of respondents argued that it should be renamed Cotgrave to reflect the largest town in the division. In addition, as described in the Keyworth section (below), there was a suggestion for transferring Kinoulton parish out of the division.</p> <p>As stated in the Keyworth section, we have not included the proposal to transfer Kinoulton parish to Keyworth division. We are therefore confirming the boundaries of the Tollerton division</p>

				as final. However, we do propose renaming it Cotgrave to reflect that this is the largest town in the area.
Keyworth	1	-9%	This division comprises Keyworth & Wolds ward, and Costock, Rempstone, Thorpe in the Glebe and Wysall parishes of Bunny ward, Hickling and Upper Broughton parishes of Nevile & Langer ward, and Plumtree parish of Tollerton ward.	<p>We received submissions arguing for the inclusion of Kinoulton parish in the Keyworth division. Respondents argued that it formed part of the Nevile &amp; Langer district ward, which reflected its links to Hickling and Upper Broughton parishes. They cited a range of community links and questioned whether it had any links to Tollerton or Cotgrave.</p> <p>While transferring Kinoulton parish to the Keyworth division would improve electoral equality in the division, it would significantly worsen it in Tollerton division from 8% fewer electors than the county average to 16% fewer. We do not consider there to be persuasive evidence to justify such a poor level of electoral equality. In addition, any attempt to address this electoral imbalance would require a significant redrawing of the boundaries in the surrounding divisions and, again, we do not consider there to be sufficient evidence for this.</p> <p>We are therefore confirming the Keyworth division as final.</p>
Leake & Ruddington	2	-7%	This division comprises Leake, Gotham, Ruddington and Sutton Bonington wards and Bunny and Bradmore parishes of Bunny ward.	<p>We received significant objections to the proposed Ruddington division with respondents objecting the inclusion of parishes normally associated with the Soar Valley in a division with Ruddington. They cited the lack of community links to Ruddington and the fact that the only road links were via Nottingham. In addition, they expressed concerns that the rural issues faced by these parishes would not be reflected in a division dominated by Ruddington. Finally, they cited links to the other parishes in the Soar Valley area.</p> <p>We received limited alternative proposals, although there was a suggestion that the area Clifton Pastures development in</p>

				<p>Barton in Fabis parish could be transferred to the Ruddington division. This proposal would result in the warding of Barton in Fabis parish, which would keep the village area in a division with other Soar Valley communities.</p> <p>We note the objections to the draft recommendations and acknowledge the concerns of the parishes in this area. We have examined the suggestion of splitting Barton in Fabis parish, transferring just the Clifton Pastures area to Ruddington division. However, while transferring Thrumpton and Ratcliffe on Soar and part of Barton in Fabis parishes to the Soar Valley division would actually improve electoral equality to 1% fewer electors than the county average by 2020, it would worsen it in the Ruddington division from 9% fewer to 14% fewer. We do not consider there to be sufficient evidence to justify this level of electoral equality.</p> <p>During the deliberations on the draft recommendations we considered a number of options for this area, including a two-member division covering the area of our proposed Ruddington and Soar Valley divisions. However, we determined that it would be better to consult on a pattern of single-member divisions. In light of the evidence received in response to the draft recommendations and in the light of no viable single-member alternatives, we have revisited the option of a two-member division and note that it would enable these parishes to retain their links with the remainder of the Soar Valley, while also creating a division with good electoral equality. We are therefore including this division as part of the final recommendations. The proposed division would be called Leake &amp; Ruddington and would have 7% fewer electors than the county average by 2020.</p>
--	--	--	--	--



Radcliffe on Trent	1	3%	This division comprises Gamston North and Radcliffe on Trent wards, and Shelford parish of East Bridgford ward.	<p>As stated in the Bingham West section (above), we received a number of responses arguing for the inclusion of Shelford parish in the Radcliffe on Trent division. In light of the evidence we have decided to include this amendment as part of our final recommendations.</p> <p>We also received objections to the inclusion of Gamston and Holme Pierrepont parishes in the Radcliffe on Tent division, with respondents arguing that Gamston area is part of Bridgford, citing links there.</p> <p>We acknowledge the concerns about the inclusion of the Gamston and Holme Pierrepont parishes in the Radcliffe on Trent division. However, as with the deliberations on the draft recommendations we have been unable to identify any alternatives that better reflect local communities, while also securing good levels of electoral equality. We also note that no other respondents have put forward viable alternative proposals.</p> <p>Therefore, subject to the transfer of Shelford parish to Radcliffe on Trent division we are confirming this division as final.</p>
West Bridgford North	1	3%	This division comprises Lady Bay and Trent Bridge wards, and part of Abbey ward.	<p>As stated in the Radcliffe on Trent section (above), we received objections to the inclusion of Gamston and Holme Pierrepont parishes in the Radcliffe on Trent parish. The respondents suggested that these areas should be in a division with West Bridgford. However, as discussed in more detail above, we have been unable to identify a division pattern that secures good electoral equality while doing this.</p> <p>We received no other significant comments on our proposals for these divisions and are therefore confirming them as final.</p>
West Bridgford South	1	3%	This division comprises Edwalton and Gamston South ward, part of Abbey ward, and Musters ward.	
West Bridgford West	1	-2%	This division comprises Compton Acres and Lutterell	

			wards, and part of Musters ward.	
--	--	--	----------------------------------	--

## Conclusions

33 Table 1 shows the impact of our final recommendations on electoral equality, based on 2014 and 2020 electorate figures.

**Table 1: Summary of electoral arrangements**

	Final recommendations	
	2014	2020
Number of councillors	66	66
Number of electoral divisions	56	56
Average number of electors per councillor	9,098	9,670
Number of divisions with a variance more than 10% from the average	17	3
Number of divisions with a variance more than 20% from the average	1	0

### **Final recommendation**

Nottinghamshire County Council should comprise 66 councillors serving 56 divisions representing 46 single-member divisions and 10 two-member divisions. The details and names are shown in Table A1 and illustrated on the large map accompanying this report.

### **Mapping**

**Sheet 1, Map 1** illustrates in outline form the proposed divisions for Nottinghamshire. You can also view our final recommendations for Nottinghamshire on our interactive maps at <http://consultation.lgbce.org.uk>

## Parish electoral arrangements

34 Under the 2009 Act we only have the power to make changes to parish electoral arrangements where these are as a direct consequence of our recommendations for principal authority electoral arrangements. However, the district and borough councils in Nottinghamshire have powers under the Local Government and Public Involvement in Health Act 2007 to conduct community governance reviews to effect changes to parish electoral arrangements.

35 As a result of our proposed division boundaries and having regard to the statutory criteria set out in schedule 2 to the 2009 Act, we are providing revised parish electoral arrangements for Balderton and Newark parishes.

36 As result of our proposed division boundaries and having regard to the statutory criteria set out in schedule 2 to the 2009 Act, we are providing revised parish electoral arrangements for Balderton parish.

**Final recommendation**

Balderton Parish Council should return 15 parish councillors, as at present, representing four wards: Balderton Milton (returning one member); Balderton North (returning four members); Balderton Rowan (returning three members); and Balderton South (returning seven members). The proposed parish ward boundaries are illustrated and named on Map 1.

37 As result of our proposed division boundaries and having regard to the statutory criteria set out in schedule 2 to the 2009 Act, we are providing revised parish electoral arrangements for Newark parish.

**Final recommendation**

Newark Town Council should return 18 town councillors, as at present, representing eight wards: Beacon (returning four members); Bridge (returning three members); Castle (returning two members); Devon (returning five members); Newark East (returning one member); Newark South (returning one member); Magnus (returning one member); and Sleaford (returning one member). The proposed parish ward boundaries are illustrated and named on Map 1.

### 3 What happens next?

38 We have now completed our review of Nottinghamshire County Council. The recommendations must now be approved by Parliament. A draft Order – the legal document which brings into force our recommendations – will be laid in Parliament. Subject to parliamentary scrutiny, the new electoral arrangements will come into force at the local elections in 2017.

#### Equalities

39 This report has been screened for impact on equalities; with due regard being given to the general equalities duties as set out in section 149 of the Equality Act 2010. As no potential negative impacts were identified, a full equality impact analysis is not required.

# Appendix A

**Table A1: Final recommendations for Nottinghamshire County Council**

Division name		Number of councillors	Electorate (2014)	Number of electors per councillor	Variance from average %	Electorate (2020)	Number of electors per councillor	Variance from average %
<b>Ashfield District</b>								
1	Ashfields	1	8,047	8,047	-12%	9,129	9,129	-6%
2	Hucknall North	1	7,594	7,594	-17%	9,130	9,130	-6%
3	Hucknall South	1	8,522	8,522	6%	8,816	8,816	-9%
4	Hucknall West	1	8,154	8,154	-11%	8,860	8,860	-8%
5	Kirkby North	1	9,231	9,231	1%	9,775	9,775	1%
6	Kirkby South	1	9,233	9,233	1%	10,127	10,127	5%
7	Selston	1	10,186	10,186	12%	10,522	10,522	9%
8	Sutton Central & East	1	8,962	8,962	-1%	9,320	9,320	-4%
9	Sutton North	1	9,982	9,982	10%	9,909	9,909	2%
10	Sutton West	1	9,918	9,918	9%	10,071	10,071	4%
<b>Bassetlaw District</b>								
11	Blyth & Harworth	1	9,359	9,359	3%	10,197	10,197	5%

**Table A1 (cont): Final recommendations for Nottinghamshire County Council**

	Division name	Number of councillors	Electorate (2014)	Number of electors per councillor	Variance from average %	Electorate (2020)	Number of electors per councillor	Variance from average %
12	Misterton	1	10,489	10,489	15%	10,653	10,653	10%
13	Retford East	1	8,928	8,928	-2%	9,569	9,569	-1%
14	Retford West	1	9,283	9,283	2%	9,745	9,745	1%
15	Tuxford	1	8,729	8,729	-4%	8,846	8,846	-9%
16	Worksop East	1	9,965	9,965	10%	10,078	10,078	4%
17	Worksop North	1	10,126	10,126	11%	10,131	10,131	5%
18	Worksop South	1	9,842	9,842	8%	10,139	10,139	5%
19	Worksop West	1	10,100	10,100	11%	10,379	10,379	7%
<b>Broxtowe Borough</b>								
20	Beeston Central & Rylands	1	8,823	8,823	-3%	9,366	9,366	-3%
21	Bramcote & Beeston North	1	9,655	9,655	6%	10,251	10,251	6%
22	Eastwood	1	9,440	9,440	4%	10,022	10,022	4%
23	Greasley & Brinsley	1	9,457	9,457	4%	10,040	10,040	4%

**Table A1 (cont): Final recommendations for Nottinghamshire County Council**

	Division name	Number of councillors	Electorate (2014)	Number of electors per councillor	Variance from average %	Electorate (2020)	Number of electors per councillor	Variance from average %
24	Nuthall & Kimberley	1	10,040	10,040	10%	10,658	10,658	10%
25	Stapleford & Broxtowe Central	2	17,127	8,564	-6%	18,182	9,091	-6%
26	Toton, Chilwell & Attenborough	2	18,880	9,440	4%	19,952	9,976	3%
<b>Gedling Borough</b>								
27	Arnold North	2	19,414	9,707	7%	20,135	10,068	4%
28	Arnold South	2	20,385	10,193	12%	20,789	10,395	7%
29	Calverton	1	9,952	9,952	9%	10,286	10,286	6%
30	Carlton East	1	9,667	9,667	6%	10,074	10,074	4%
31	Carlton West	2	19,961	9,981	10%	20,533	10,267	6%
32	Newstead	1	8,194	8,194	-10%	8,594	8,594	-11%
<b>Mansfield District</b>								
33	Mansfield East	2	17,897	8,949	-2%	19,225	9,613	-1%
34	Mansfield North	2	17,868	8,934	-2%	18,274	9,137	-6%
35	Mansfield South	2	17,966	8,983	-1%	19,646	9,823	2%



**Table A1 (cont): Final recommendations for Nottinghamshire County Council**

	Division name	Number of councillors	Electorate (2014)	Number of electors per councillor	Variance from average %	Electorate (2020)	Number of electors per councillor	Variance from average %
36	Mansfield West	2	16,738	8,369	-8%	18,375	9,188	-5%
37	Warsop	1	9,293	9,293	2%	9,665	9,665	0%
<b>Newark &amp; Sherwood District</b>								
38	Balderton	1	7,560	7,560	-17%	9,953	9,953	3%
39	Blidworth	1	8,055	8,055	-11%	8,647	8,647	-11%
40	Collingham	1	9,405	9,405	3%	9,734	9,734	1%
41	Farndon & Trent	1	7,443	7,443	-18%	8,806	8,806	-9%
42	Muskham & Farnsfield	1	10,088	10,088	11%	10,440	10,440	8%
43	Newark East	1	7,381	7,381	-19%	9,183	9,183	-5%
44	Newark West	1	8,777	8,777	-4%	9,000	9,000	-7%
45	Ollerton	1	9,586	9,586	5%	10,013	10,013	4%
46	Sherwood Forest	1	8,901	8,901	-2%	9,161	9,161	-5%
47	Southwell	1	10,626	10,626	17%	10,710	10,710	11%

**Table A1 (cont): Final recommendations for Nottinghamshire County Council**

Division name	Number of councillors	Electorate (2014)	Number of electors per councillor	Variance from average %	Electorate (2020)	Number of electors per councillor	Variance from average %
<b>Rushcliffe Borough</b>							
48 Bingham East	1	9,289	9,289	2%	9,297	9,297	-4%
49 Bingham West	1	6,753	6,753	-26%	8,891	8,891	-8%
50 Cotgrave	1	8,095	8,095	-11%	8,888	8,888	-8%
51 Keyworth	1	8,642	8,642	-5%	8,754	8,754	-9%
52 Leake & Ruddington	2	15,372	7,686	-16%	17,891	8,946	-7%
53 Radcliffe on Trent	1	8,670	8,670	-5%	9,970	9,970	3%
54 West Bridgford North	1	9,939	9,939	9%	9,939	9,939	3%
55 West Bridgford South	1	8,804	8,804	-3%	9,974	9,974	3%
56 West Bridgford West	1	9,681	9,681	6%	9,481	9,481	-2%
<b>Totals</b>	<b>66</b>	<b>600,474</b>	<b>–</b>	<b>–</b>	<b>638,195</b>	<b>–</b>	<b>–</b>
<b>Averages</b>	<b>–</b>	<b>–</b>	<b>9,098</b>	<b>–</b>	<b>–</b>	<b>9,670</b>	<b>–</b>

Source: Electorate figures are based on information provided by Nottinghamshire County Council.

Note: The 'variance from average' column shows by how far, in percentage terms, the number of electors per councillor in each electoral division varies from the average for the county. The minus symbol (-) denotes a lower than average number of electors. Figures have been rounded to the nearest whole number.

# Appendix B

## Submissions received

All submissions received can also be viewed on our website at <http://www.lgbce.org.uk/current-reviews/east-midlands/nottinghamshire/nottinghamshire-county-council>

### Local authorities

- Nottinghamshire County Council
- Broxtowe Borough Council
- Gedling Borough Council
- Newark and Sherwood District Council

### Political groups

- Ashfield District Council Conservatives
- Hucknall Conservatives
- Newark Conservatives
- Nottinghamshire County Council Liberal Democrats
- Sherwood Conservative Association
- Southwell Liberal Democrats

### Members of Parliament

- Rt Hon Kenneth Clarke MP
- Vernon Coaker MP
- Robert Jenrick MP
- Gloria De Piero MP
- Rt Hon Anna Soubry MP
- Mark Spencer MP

### Members of European Parliament

- Andrew Lewer MBE MEP

### Nottinghamshire County Councillors

- Cllr Brooks
- Cllr Butler
- Cllr Gilfoyle
- Cllr Handley
- Cllr Laughton
- Cllr Owen
- Cllr Wilkinson
- Cllr Yates

## **Borough and District Councillors**

- Cllr Bradley (Ashfield District Council)
- Cllr Brand (Bassetlaw District Council)
- Cllr Burton (Bassetlaw District Council)
- Cllr Handley (Broxtowe Borough Council)
- Cllr Mitchell (Ashfield District Council)
- Cllr Murphy (Ashfield District Council)
- Cllr Morrison (Ashfield District Council) – Hucknall Area Committee
- Cllr K Rostance (Ashfield District Council)
- Cllr P Rostance (Ashfield District Council)
- Cllr Rowland (Broxtowe Borough Council)
- Cllr Sanger (Bassetlaw District Council)
- Cllr Smith (Rushcliffe Borough Council)

## **Parish councillors**

- Councillor Fisher (Shelford Parish Council)
- Councillor Foxwell (Oxton Parish Council)
- Councillor Miller (Shelford Parish Council)
- Councillor Greenwood (Cropwell Bishop Parish Council)

## **Parish and Town Councils**

- Balderton Parish Council
- Barton in Fabis Parish Council
- Beckingham cum Saundby Parish Council
- Bestwood St Albans Parish Council
- Brinsley Parish Council
- Burton Joyce Parish Council
- Carlton on Trent Parish Council
- Cauntton Parish Council
- Coddington Parish Council
- Cotgrave Town Council
- Cromwell Parish Meeting
- Cropwell Bishop Parish Council
- East Leake Parish Council
- Egmantton Parish Council
- Gotham Parish Council
- Greasley Parish Council
- Holme Pierrepont & Gamston Parish Council
- Kinoulton Parish Council
- Mattersey Parish Council
- Newark Town Council
- Newton Parish Council
- Nuthall Parish Council
- Oxton Parish Council
- Radcliffe on Trent Parish Council

- Ranskill Parish Council
- Ratcliffe on Soar Parish Meeting
- Shelford Parish Council
- Stapleford Town Council
- Styrrup with Oldcotes Parish Council
- Thrumpton Parish Meeting
- Tuxford Town Council
- Upton Parish Council
- Walkeringham Parish Council
- West Stockwith Parish Council
- Weston Parish Council

### **Local organisations**

- All Hallows Church
- Beauvale Residents' Association
- Friends of All Hallows
- Friends of Gedling Country Park
- North East Bassetlaw Forum
- Reach Out Residents' Group
- SABRHE
- Village Vision

### **Residents**

- 125 local residents

### **Petitions**

- Keep Hucknall Unique
- Keep Gedling in Gedling

## Appendix C

### Glossary and abbreviations

Council size	The number of councillors elected to serve on a council
Electoral Change Order (or Order)	A legal document which implements changes to the electoral arrangements of a local authority
Division	A specific area of a county, defined for electoral, administrative and representational purposes. Eligible electors can vote in whichever division they are registered for the candidate or candidates they wish to represent them on the county council
Electoral fairness	When one elector's vote is worth the same as another's
Electoral inequality	Where there is a difference between the number of electors represented by a councillor and the average for the local authority
Electorate	People in the authority who are registered to vote in elections. For the purposes of this report, we refer specifically to the electorate for local government elections
Number of electors per councillor	The total number of electors in a local authority divided by the number of councillors
Over-represented	Where there are fewer electors per councillor in a ward or division than the average

Parish	A specific and defined area of land within a single local authority enclosed within a parish boundary. There are over 10,000 parishes in England, which provide the first tier of representation to their local residents
Parish council	A body elected by electors in the parish which serves and represents the area defined by the parish boundaries. See also 'Town council'
Parish (or Town) council electoral arrangements	The total number of councillors on any one parish or town council; the number, names and boundaries of parish wards; and the number of councillors for each ward
Parish ward	A particular area of a parish, defined for electoral, administrative and representational purposes. Eligible electors vote in whichever parish ward they live for candidate or candidates they wish to represent them on the parish council
Town council	A parish council which has been given ceremonial 'town' status. More information on achieving such status can be found at <a href="http://www.nalc.gov.uk">www.nalc.gov.uk</a>
Under-represented	Where there are more electors per councillor in a ward or division than the average
Variance (or electoral variance)	How far the number of electors per councillor in a ward or division varies in percentage terms from the average

Ward	A specific area of a district or borough, defined for electoral, administrative and representational purposes. Eligible electors can vote in whichever ward they are registered for the candidate or candidates they wish to represent them on the district or borough council
------	--



The table lists all the divisions we are proposing as part of our final recommendations along with the number of voters per county councillor. The table also shows the electoral variances for each of the proposed divisions which tells you how we have delivered electoral equality.

Division name					Division name				
		No. of cilrs	Number of electors per councillor (2020)	Variance from average %			No. of cilrs	Number of electors per councillor (2020)	Variance from average %
<b>Ashfield District</b>					<b>Mansfield District</b>				
1	Ashfields	1	9,129	-6%	33	Mansfield East	2	9,613	-1%
2	Hucknall North	1	9,130	-6%	34	Mansfield North	2	9,137	-6%
3	Hucknall South	1	8,816	-9%	35	Mansfield South	2	9,823	2%
4	Hucknall West	1	8,860	-8%	36	Mansfield West	2	9,188	-5%
5	Kirkby North	1	9,775	1%	37	Warsop	1	9,665	0%
6	Kirkby South	1	10,127	5%	<b>Newark &amp; Sherwood District</b>				
7	Selston	1	10,522	9%					
8	Sutton Central &East	1	9,320	-4%					
9	Sutton North	1	9,909	2%	38	Balderton	1	9,953	3%
10	Sutton West	1	10,071	4%	39	Blidworth	1	8,647	-11%
<b>Bassetlaw District</b>					40	Collingham	1	9,734	1%
11	Blyth & Harworth	1	10,197	5%	41	Farndon & Trent	1	8,806	-9%
12	Misterton	1	10,653	10%	42	Muskham & Farnsfield	1	10,440	8%
13	Retford East	1	9,569	-1%	43	Newark East	1	9,183	-5%
14	Retford West	1	9,745	1%	44	Newark West	1	9,000	-7%
15	Tuxford	1	8,846	-9%	45	Ollerton	1	10,013	4%
16	Worksop East	1	10,078	4%	46	Sherwood Forest	1	9,161	-5%
17	Worksop North	1	10,131	5%	47	Southwell	1	10,710	11%
18	Worksop South	1	10,139	5%	<b>Rushcliffe Borough</b>				
19	Worksop West	1	10,379	7%	48	Bingham East	1	9,297	-4%
<b>Broxtowe Borough</b>					49	Bingham West	1	8,891	-8%
20	Beeston Central & Rylands	1	9,366	-3%	50	Cotgrave	1	8,888	-8%
21	Bramcote & Beeston North	1	10,251	6%	51	Keyworth	1	8,754	-9%
22	Eastwood	1	10,022	4%	52	Leake & Ruddington	2	8,946	-7%
23	Greasley & Brinsley	1	10,040	4%	53	Radcliffe on Trent	1	9,970	3%
24	Nuthall & Kimberley	1	10,658	10%	54	West Bridgford North	1	9,939	3%
25	Stapleford & Broxtowe Central	2	9,091	-6%	55	West Bridgford South	1	9,974	3%
26	Toton, Chilwell & Attenborough	2	9,976	3%	56	West Bridgford West	1	9,481	-2%
<b>Gedling Borough</b>					<b>Totals Average</b>		<b>66</b>	<b>9,670</b>	
27	Arnold North	2	10,068	4%					
28	Arnold South	2	10,395	7%					
29	Calverton	1	10,286	6%					
30	Carlton East	1	10,074	4%					
31	Carlton West	2	10,267	6%					
32	Newstead	1	8,594	-11%					

What happens next?

We have now completed our review of Nottinghamshire County Council.

The recommendations must now be approved by Parliament. A draft order - the legal document which brings into force our recommendations - will be laid in Parliament. Subject to parliamentary scrutiny, the new electoral arrangements will come into force at the county elections in 2017.



Final recommendations on the new electoral arrangements for Nottinghamshire County Council

Summary report

Read the full report and view detailed maps at: [www.consultation.lgbce.org.uk](http://www.consultation.lgbce.org.uk)  
Find out more at: [www.lgbce.org.uk](http://www.lgbce.org.uk)  
Follow us on Twitter at: @LGBCE

Who we are

The Local Government Boundary Commission for England is an independent body set up by Parliament. We are not part of government or any political party. We are accountable to Parliament through a committee of MPs chaired by the Speaker of the House of Commons.

Our main role is to carry out electoral reviews of local authorities throughout England.

Electoral review

An electoral review examines and proposes new electoral arrangements for a local authority. A local authority's electoral arrangements are:

- The total number of councillors representing the council's voters ('council size').
- The names, number and boundaries of wards or electoral divisions.
- The number of councillors representing each ward or division.

Why Nottinghamshire?

We are conducting an electoral review of Nottinghamshire County Council to deliver improved levels of electoral equality for local voters.

Nottinghamshire currently has high levels of electoral inequality where some councillors represent many more - or many fewer - voters than others. This means that the value of your vote - in county council elections - varies depending on where you live in Nottinghamshire.

Our proposals

Nottinghamshire County Council currently has 67 county councillors. Based on the evidence we received during previous phases of the review, the Commission recommends that 66 county councillors should serve Nottinghamshire in future.

Electoral arrangements

Our final recommendations propose that Nottinghamshire's 66 county councillors should represent 46 single-member electoral divisions and 10 two-member electoral divisions across the county.

The Commission believes the final recommendations meet our statutory criteria to:

- Deliver electoral equality for voters.
- Reflect local community interests and identities.
- Promote effective and convenient local government.

Stage of review	Description
28 Oct 2014 - 9 Feb 2015	Public consultation on new division pattern
9 Jun - 10 Aug 2015	Public consultation on draft recommendations
17 Nov 2015	Publication of final recommendations
May 2017	Subject to parliamentary approval - implementation of new arrangements at county elections



### Summary of our recommendations

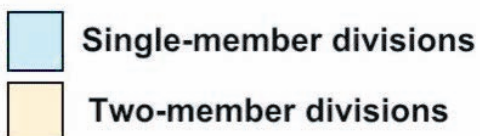
Our final recommendations propose that Nottinghamshire county councillors should represent 46 single-member electoral divisions and 10 two-member electoral divisions across the county.

Before drawing up the final recommendations the Commission carried out two stages of public consultation, initially inviting proposals for a new pattern of divisions for Nottinghamshire, from which we produced our draft recommendations. These were subject to public consultation. We have considered all the submissions received during both phases of consultation.

The Commission believes that the final recommendations meet the obligations –which are set out in law –to:

- Deliver electoral equality for voters
- Reflect local community interests and identities
- Promote effective and convenient local government.

You can read the full report on our website at [www.lgbce.org.uk](http://www.lgbce.org.uk).



### Find out more:

[www.consultation.lgbce.org.uk](http://www.consultation.lgbce.org.uk)

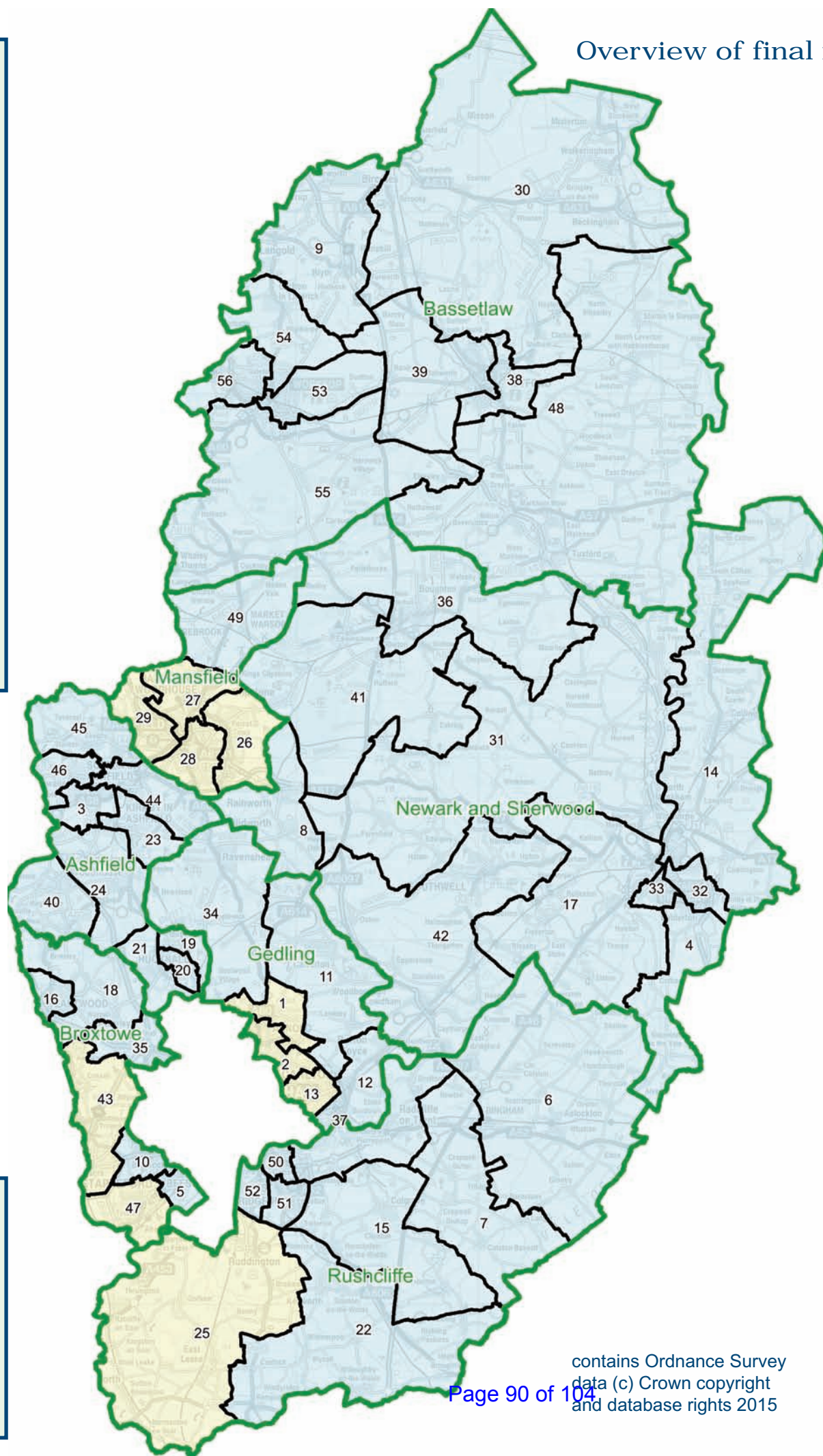
- view the map of our recommendations down to street level.
- zoom into the areas that interest you most.
- read the full report of our recommendations.
- compare the final recommendations with the draft proposals and existing arrangements.
- find out more about the electoral review process

## Overview of final recommendations for Nottinghamshire County Council

View this map online and explore it in more detail at:  
[www.consultation.lgbce.org.uk](http://www.consultation.lgbce.org.uk)

Follow the Commission on Twitter: @LGBCE

If you are viewing this page online, click on the map to go straight to our interactive mapping area



### Map key:

1	Arnold North	26	Mansfield East
2	Arnold South	27	Mansfield North
3	Ashfields	28	Mansfield South
4	Balderton	29	Mansfield West
5	Beeston Central & Rylands	30	Misterton
6	Bingham East	31	Muskham & Farnsfield
7	Bingham West	32	Newark East
8	Blidworth	33	Newark West
9	Blyth & Harworth	34	Newstead
10	Bramcote & Beeston North	35	Nuthall & Kimberley
11	Calverton	36	Ollerton
12	Carlton East	37	Radcliffe on Trent
13	Carlton West	38	Retford East
14	Collingham	39	Retford West
15	Cotgrave	40	Selston
16	Eastwood	41	Sherwood Forest
17	Farndon & Trent	42	Southwell
18	Greasley & Brinsley	43	Stapleford & Broxtowe Central
19	Hucknall North	44	Sutton Central & East
20	Hucknall South	45	Sutton North
21	Hucknall West	46	Sutton West
22	Keyworth	47	Toton, Chilwell & Attenborough
23	Kirkby North	48	Tuxford
24	Kirkby South	49	Warsop
25	Leake & Ruddington	50	West Bridgford North
		51	West Bridgford South
		52	West Bridgford West
		53	Worksop East
		54	Worksop North
		55	Worksop South
		56	Worksop West

contains Ordnance Survey  
data (c) Crown copyright  
and database rights 2015

## News Release

### **Local electoral arrangements finalised for Nottinghamshire County Council**

[Embargoed until 00:01 on 17 November 2015](#)

The independent Local Government Boundary Commission for England has published its final recommendations for new electoral arrangements for Nottinghamshire County Council.

Today's publication follows a nine-week public consultation on its draft proposals and draws new boundaries for each county electoral division across Nottinghamshire.

The Commission's final recommendations propose that Nottinghamshire should be represented by 66 county councillors in the future: one fewer than the current arrangement. The recommendations also propose that those councillors should represent 46 single-member electoral divisions and ten two-member electoral divisions across the county.

Max Caller, Chair of the Commission, said, "We are extremely grateful to people across Nottinghamshire who took the time and effort to send us their views. The Commission considered every piece of evidence it received before finalising these recommendations.

"Across the county, we have sought to balance the views expressed to us by local people with the criteria we must apply when we are deciding on new electoral arrangements. As such, we believe these recommendations deliver electoral equality for voters as well as reflecting the identities of communities in Nottinghamshire."

In response to representations made to it on the draft recommendations, the Commission has made changes to the draft proposals it originally put forward for consultation in June. For example, in Bassetlaw district, the Commission has altered its recommendations in light of local submissions that argued for Beckingham and Saundby parishes to be part of the Misterton division rather than the Tuxford division as previously proposed. As part of the Commission's final recommendations, both parishes have therefore been included in the Misterton electoral division.

In Broxtowe, the Commission's draft recommendations had proposed to divide the parish of Eastwood between county electoral divisions. However, in response to local representations, the Commission now proposes that the whole parish should be included in its own Eastwood division. Brinsley, which had been included in the Eastwood division will now form part of a Greasley & Brinsley division.

In Newark and Sherwood district, the Commission has also made changes to its recommendations as a result of evidence presented by local people and groups. The Commission heard evidence of strong community links between Upton parish and Oxtun parish with the Southwell area. The Commission has therefore included both parishes in the Southwell division.



The Commission has also responded positively to representations made that Coddington parish should be part of the Collingham division. The Commission had previously included the parish in the Newark East division but, in light of the evidence received, believes its inclusion with the Collingham division represents a better reflection of local community ties.

In Rushcliffe borough, the Commission responded positively to representations that argued that Shelford parish has stronger community links with Radcliffe on Trent than Bingham as previously proposed. The Commission has therefore altered the boundaries of its Bingham West division and Radcliffe on Trent division to incorporate the change.

The Commission also received objections to its draft recommendations for the configuration of its Ruddington division and its Soar Valley division. Respondents argued that the Ruddington division included parishes which traditionally share ties with other parishes in the Soar Valley area. To avoid dividing areas that share a community identity, the Commission therefore proposes a two-member Leake & Ruddington division to avoid creating an arbitrary split between the parishes.

Elsewhere in the county, the Commission has made minor changes to its draft recommendations in response to local feedback as well as confirming the remainder of its draft recommendations as final.

Full details of the final recommendations are available on the Commission's website at [www.lgbce.org.uk](http://www.lgbce.org.uk).

The proposed new arrangements must now be implemented by Parliament. A draft order – the legal document which brings into force the recommendations – will be laid in Parliament in the coming months. The draft Order provides for the new electoral arrangements to come into force at the county council elections in 2017.

## **Ends**

For further information contact the Commission's press office on: 0330 500 1250 / 1525 or email: [press@lgbce.org.uk](mailto:press@lgbce.org.uk)

## **Notes to editors:**

1. The Local Government Boundary Commission for England is responsible for reviewing local authority electoral arrangements, e.g. defining boundaries for local elections and the number of councillors to be elected and – separately - for conducting reviews of local government external boundaries and structure.
2. Full details of the Commission's final recommendations (including maps) can be viewed at: [www.lgbce.org.uk/current-reviews/east-midlands/nottinghamshire/nottinghamshire-county-council](http://www.lgbce.org.uk/current-reviews/east-midlands/nottinghamshire/nottinghamshire-county-council)  
Or: <https://consultation.lgbce.org.uk/node/4142>.

**REPORT OF THE CHIEF EXECUTIVE****RECOGNITION OF MEMBERS AND OFFICERS OF GROUPS****Purpose of the Report**

1. To report details of the revised membership of the political Groups of the Council, together with the names of officers appointed within the Groups

**Information and Advice**

2. It is a requirement for Members to note the composition of the political Groups of the Council in accordance with the Committees and Political Groups Regulations made under the Local Government and Housing Act 1989.
3. Following formal notification received on 18 November 2015 there are now currently five political Groups on the Council, which are:-
  - the Nottinghamshire County Council Labour Group
  - the Nottinghamshire County Council Conservative Group
  - the Liberal Democrats Group
  - the Ashfield Independents Group
  - the Independent Group
4. The memberships of the Groups are shown in the Appendix to this report.
5. In addition to the five Groups detailed within this report, there are three non-aligned County Councillors who are not part of any political Group of the Council. These are Councillor Maureen Dobson, Councillor Ian Campbell and Councillor John Wilmott (Hucknall First Community Forum).
6. Following the recent resignation of Councillor Gail; Turner, there is currently one vacancy which will be filled following the Selston Division by-election on 26 November 2015. The results of this by-election will be formally reported to the next meeting of Full Council.
7. Regulations made under the Local Government and Housing Act 1989 require that seats on Committees and Sub-Committees are allocated to the political groups in a way which reflects the overall balance of the Council. Details of these are dealt with elsewhere in the agenda.

**Other Options Considered**

8. None, it is necessary for Council to note any changes to political groups to Full Council

## **Reason for Recommendations**

9. It is necessary for Council to note the political Groups on the Council and their Officers.

## **Statutory and Policy Implications**

10. This report has been compiled after consideration of implications in respect of crime and disorder, finance, human resources, human rights, the NHS Constitution (Public Health only), the public sector equality duty, safeguarding of children and vulnerable adults, service users, sustainability and the environment and ways of working and where such implications are material they are described below. Appropriate consultation has been undertaken and advice sought on these issues as required.

## **RECOMMENDATIONS**

- 1) That the membership of the political groups be noted
- 2) That, in accordance with the Procedure Rules, the Officers of the Groups be noted.

**Anthony May**  
**Chief Executive**

**For any enquiries about this report please contact:** Sara Allmond  
Tel: 0115 9773794 Email: [sara.allmond@nottsc.gov.uk](mailto:sara.allmond@nottsc.gov.uk)

### **Constitutional Comments (SLB 17/11/15)**

11. The proposals in this report are within the remit of the Council

### **Financial Comments (SES 17/11/15)**

12. There are no specific financial implications arising directly from this report

### **Background Papers and Published Documents**

Except for previously published documents, which will be available elsewhere, the documents listed here will be available for inspection in accordance with Section 100D of the Local Government Act 1972.

- None

### **Electoral Division(s) and Member(s) Affected**

All

**MEMBERS AND OFFICERS OF GROUPS**

**(A) Nottinghamshire County Council Labour Group**

**32 Members**

Pauline Allan	David Kirkham
Roy Allan	John Knight
John Allin	Darren Langton
Alan Bell	Diana Meale
Joyce Bosnjak	Michael Payne
Nicki Brooks	John Peck JP
Steve Calvert	Sheila Place
Steve Carroll	Liz Plant
John Clarke	Mike Pringle
Jim Creamer	Darrell Pulk
Sybil Fielding	Alan Rhodes
Kate Foale	Pamela Skelding
Glynn Gilfoyle	Parry Tsimbiridis
Kevin Greaves	Muriel Weisz
Alice Grice	John Wilkinson
Colleen Harwood	Yvonne Woodhead

**Officers**

<b>Leader:</b>	Councillor Alan Rhodes
<b>Deputy Leader:</b>	Councillor Joyce Bosnjak
<b>Business Manager:</b>	Councillor Steve Carroll

**(B) Nottinghamshire County Council Conservative Group**

**21 Members**

Reg Adair	Bruce Laughton
Chris Barnfather	John Ogle
Andrew Brown	Philip Owen
Richard Butler	Tony Roberts MBE
John Cottee	Mrs Sue Saddington
Mrs Kay Cutts MBE	Martin Suthers OBE
Dr John Doddy	Keith Walker
Boyd Elliott	Stuart Wallace
John Handley	Gordon Wheeler
Richard Jackson	Liz Yates
Roger Jackson	

### **Officers**

<b>Leader:</b>	Councillor Mrs Kay Cutts MBE
<b>Deputy Leader:</b>	Councillor Martin Suthers OBE
<b>Business Manager:</b>	Councillor Chris Barnfather

### **(C) Liberal Democrats Group**

#### **5 Members**

Steve Carr  
Stan Heptinstall MBE  
Keith Longdon  
Ken Rigby  
Jacky Williams

### **Officers**

<b>Leader:</b>	Councillor Ken Rigby
----------------	----------------------

### **(D) Ashfield Independents Group**

#### **3 Members**

Tom Hollis  
Rachel Madden  
Jason Zadrozny

### **Officers**

<b>Leader:</b>	Councillor Jason Zadrozny
----------------	---------------------------

### **(E) Independent Group**

#### **2 Members**

Stephen Garner (Mansfield Independent Forum)  
Andy Sissons (Mansfield Independent Forum)

### **Officers**

<b>Leader:</b>	Councillor Stephen Garner
----------------	---------------------------

### **(F) Non-aligned Members**

Councillor Ian Campbell  
Councillor Maureen Dobson  
Councillor John Wilmott (Hucknall First Community Forum)



**REPORT OF THE CHIEF EXECUTIVE****MEMBERSHIP OF COMMITTEES****Purpose of the Report**

1. To agree the revised allocation of committee seats to ensure political proportionality, following the recent notification of the formation of the Ashfield Independents Group.

**Information and Advice**

2. The County Council is under a duty to review the allocation of seats to political groups where there is a change to the membership of political groups. As reported earlier, Councillors Tom Hollis, Rachel Madden and Jason Zadrozny have formed a new group, the Ashfield Independents Group.
3. In light of the timing of the notification of the new group, the appendix which will detail the allocation of seats on each committee, is currently being finalised subject to further discussions with relevant Members. This will be circulated as soon as possible, ahead of the meeting.
4. The membership of the County Council is therefore now as follows: -

Labour Group	32
Conservative Group	21
Liberal Democrat Group	5
Ashfield Independents Group	3
Independent Group	2
Non Aligned Members	3
Vacancy	1
Total	67

5. In determining the membership of committees, account must be taken of the requirements of the Local Government and Housing Act 1989 and the Local Government (Committees and Political Groups) Regulations 1990. The legislation requires that seats on committees and sub-committees are allocated in a way which reflects the overall balance on the Council.
6. There are four principles which apply to ensure political balance: -
  - a. All seats on one single committee cannot be allocated to the same political group

- b. If a group has an overall majority on Council they must have an overall majority on every committee
- c. Subject to a and b, the number of seats allocated to each political group on all the committees taken together must be proportionate to their strength on Council. There are 241 seats on all of the ordinary committees of Council and the proportions for each group will be detailed within the finalised appendix.
- d. Subject to a, b and c, each political party must be allocated that number of seats on each committee taken individually as is proportionate to their strength on Council

### **Other Options Considered**

- 7. None - seats must be allocated in line with the above political balance principles.

### **Reason for Recommendation**

- 8. To meet the Council's duty to review the allocation of seats to political groups on a change in political group membership, in order to ensure seat allocation is made in accordance with the principles of proportionality prescribed by law.

### **Statutory and Policy Implications**

- 9. This report has been compiled after consideration of implications in respect of crime and disorder, finance, human resources, human rights, the NHS Constitution (Public Health only), the public sector equality duty, safeguarding of children and vulnerable adults, service users, sustainability and the environment and ways of working and where such implications are material they are described below. Appropriate consultation has been undertaken and advice sought on these issues as required.

### **RECOMMENDATION**

- 1) To approve the allocation of committee seats, as set out in the appendix, in order to fulfil the statutory requirement for political balance on committees.

**Anthony May**  
**Chief Executive**

**For any enquiries about this report please contact:**

Jayne Francis-Ward  
[Jayne.Francis-Ward@nottsgov.uk](mailto:Jayne.Francis-Ward@nottsgov.uk)  
 0115 9773478

### **Constitutional Comments (SLB 17/11/15)**

- 10. Council is the only body authorised to determine the allocation of seats on Committees of Council.

### **Financial Comments (SES – 17/11/2015)**

11. There are no specific financial implications arising from this report.

### **Background Papers and Published Documents**

Except for previously published documents, which will be available elsewhere, the documents listed here will be available for inspection in accordance with Section 100D of the Local Government Act 1972.

- None

### **Electoral Division(s) and Member(s) Affected**

- All





## **COUNTY COUNCIL**

**Thursday, 26<sup>th</sup> November 2015 commencing at 10.30 am**

### **ADDENDUM TO ITEM 11**

#### **REPORT OF THE CHIEF EXECUTIVE**

#### **MEMBERSHIP OF COMMITTEES**

The detailed allocation of seats in committees referred to in paragraph 3 of the report is shown in the attached table.

**Anthony May**  
**Chief Executive**



## APPENDIX - Allocation of Committee Seats

Meeting	Number of County Cllrs	Labour	Cons	Lib Dems	Ashfield Independ	Independ Group	Cllr Dobson	Cllr Campbell	Cllr John Wilmott	Other
Adult Social Care and Health Committee	11	6	3	1	1					
Appeals Sub-Committee (pool)	11	5	3	1	1	1				
Audit Committee	9	3	3	1	1				1	
Children and Young People's Committee	11	5	3	1		1			1	4 non-voting co-optees
Community Safety Committee	9	4	3		1		1			
Conduct Committee	5	2	2							<b>Vacancy</b>
Corporate Parenting Sub-Committee	9	3	3	1		1	1			
Culture Committee	11	6	3		1		1			
Economic Development Committee	9	4	3	1					1	2 non-voting co-optees
Environment and Sustainability Committee	9	5	3	1						
Finance and Property Committee	11	6	3	1		1				
Grant Aid Sub-Committee	7	3	2	1						<b>Vacancy</b>
Greater Nott'm Light Rapid Transit Advisory Cttee	5	2	2						1	5 City Council Members
Health and Wellbeing Board	5	2	2	1						19 - see rec c
Health Scrutiny Committee	6	3	2	1						4 Dist. Council Members – see rec b
Joint City/County Health Scrutiny Committee	8	4	3							8 City Council Members <b>Vacancy</b>
Joint Cttee on Strategic Planning & Transport	4	2	1		1					4 City Council Members
Local Joint Resolutions Committee	6	3	2		1					
Nottinghamshire Pension Fund Committee	9	4	3	1				1		
Pensions Investment Sub-Committee	9	4	3	1				1		8 -see rec. c
Pensions Sub-Committee	9	4	3	1				1		8 plus 2 pensioner reps – see rec c
Personnel Committee	9	4	3		1		1			
Planning & Licensing Committee	11	5	3	1	1	1				
Policy Committee	19	10	6	1	1	1				
Public Health Committee	9	5	3		1					
Senior Staffing Sub-Committee	9	5	3	1						
Transport and Highways Committee	11	6	3	1		1				

## **Combined Fire Authority**

It is also necessary to change the allocation of seats on the Combined Fire Authority to reflect the changes in Group membership and ensure legal compliance.

The allocation of seats is now as follows:

Labour	6
Conservative	4
Liberal Democrat	1
Ashfield Independents	1