



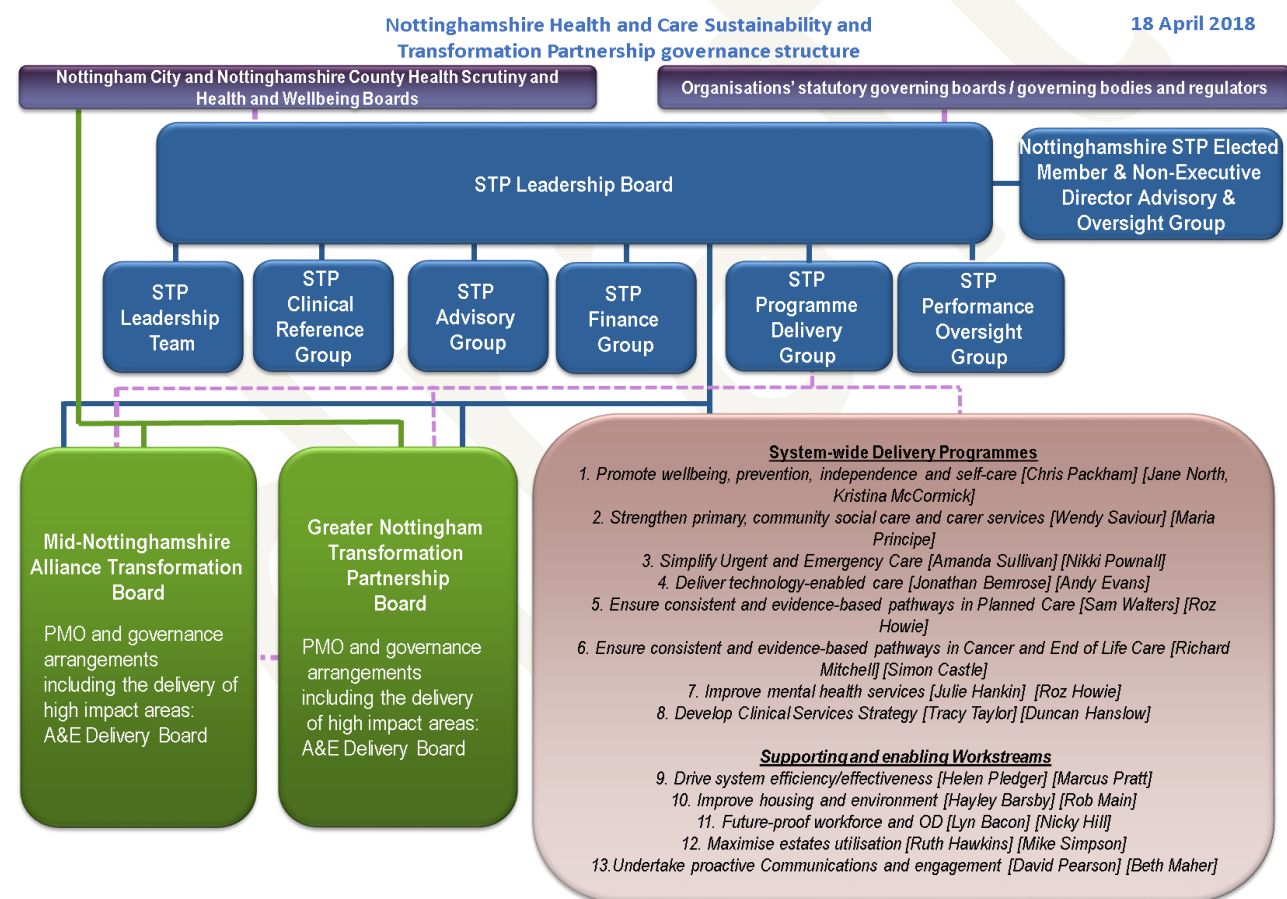
Circle Nottingham NHS Treatment Centre & Integrated Care Systems

Background

Commissioners and providers from health & social care across Nottingham and Nottinghamshire came together in 2016 to develop a Sustainable Transformation Plan (STP) in accordance with national guidance. The STP outlines the locally relevant implementation of the Five Year Forward View (FYFV) by addressing the Nottinghamshire health and wellbeing, care and quality and finance and efficiency gaps. It confirmed the role of two place based delivery units within the footprint: Greater Nottingham and Mid Nottinghamshire.

Following the publication of the planning guidance: **Refreshing NHS Plans for 2018/19** on 5th February 2018 there have been some changes in terminology. In the future the STP will become an Integrated Care System (ICS) and will adopt the strategic commissioning role covering the whole of Nottinghamshire. The local delivery units will be known as the Integrated Delivery Partnership (ICP).

Circle Nottingham current fit in the system governance structure



Above is the current infrastructure of the system and Circle have representation at the following groups

- STP Advisory Group
- Greater Nottingham Transformation Partnership Board
- System - wide delivery group – Planned Care

We have been advised as a non-statutory organisation that Circle would not be able to be part of the STP leadership board unless like Nottingham CityCare we were a work stream lead for one of the system delivery groups. We are currently working to ensure that there is Clinical representation from Circle on the STP Clinical Reference Group.

Circle Involvement with STP Elective Care Transformation

- Circle has been supportive working to standardise elective care pathways to achieve better value by reducing unwarranted clinical variation. An example of this is where Circle has proactively implemented to align with the CCG restricted and not funded policy to seek prior approval for treatments
- Faecal Immunochemical Testing (FIT) - Circle is working to implement FIT testing which is an efficient pathway of reducing interventions part of a new Rapid Colorectal Diagnostic pathway. FIT's value is in being able to stratify the risk of colorectal cancer in patients, allowing those with a high risk of colorectal cancer to have their investigations prioritised. Patients with no risk will avoid having an outpatient appointment or invasive colonoscopy.
- Nottingham Digestive Diseases Interface – (NDDI) is a new pathway which allows referrals to be worked up and be reviewed in the community by gastroenterology or Hepatology consultant before being automatically booked for hospital which is a better for the patients as it allows faster access for a specialist clinical review. It also gives easier and more efficient access to diagnostic testing.
- Transforming Outpatients - We are committed to working to ensure that pathways are delivered which are the best for patients and redesigning services to ensure that they are delivered in the community where appropriate. An example of this is we have transitioned pain services into a community model which reduces the requirements for outpatient appointments as care is delivered closer to home and we are currently helping to develop principals of a community gynecology model.
- Rushcliffe MSK – we are current working to deliver an expanded MSK service to include advanced triage with the aspiration to make greater commissioner savings and test new methodologies of working.