

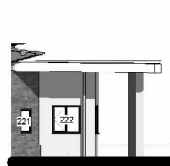
View 6
1 : 100

Render 25-80-76/170B
System: 25-80-79/110



View 7
1 : 100

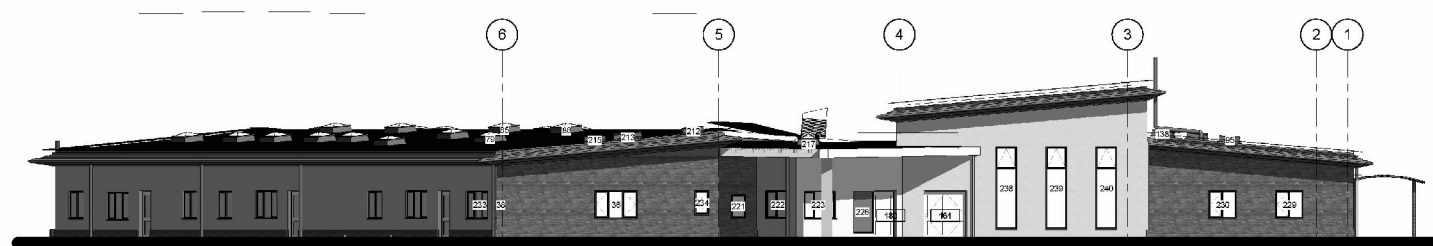
All external walls sub frame 15-65-75/145
Brick plinth 25-10-55/110



View 9
1 : 100



View 10
1 : 100
Brick to front entrance
25-10-55/110



Render 25-80-76/170B
System: 25-80-79/110

Brick to front entrance
25-10-55/110

Hall Trespa 25-80-76/170



Trent Bridge House, Fox Road
Nottinghamshire West Bridgford, Nottingham, NG2 6BJ
County Council Tel: 0115 982 3823

Erection of 420 place primary school (in two phases) and 26 (full time)
place Foundation 1 (nursery) unit, with grassed, hard court and informal play areas,
servicing, car parking and associated landscape works including 2.4m high security fencing.
Land off Kenbrook Road, Hucknall, Nottinghamshire.
Planning Application No. 4/v/2013/0360

This map is reproduced from Ordnance Survey material with the permission of Ordnance Survey on behalf of the
Controller of Her Majesty's Stationery Office © Crown copyright.
Unauthorised reproduction infringes Crown copyright and may lead to prosecution or civil proceedings. (1000019713) (2013)



Not to Scale
Produced by: JW
Date: SEPT 2013

PLAN 6