

Corporate Parenting Sub-Committee

Monday, 24 June 2013 at 14:00

County Hall, County Hall, West Bridgford, Nottingham NG2 7QP

1	Appointment of Chairman and Vice-Chairman Details	1-2
2	To note the Membership of the Committee Details	1-2
3	Minutes of the last meeting held on 11 March 13 Details	3 - 4
4	Apologies for Absence Details	1-2
5	Declarations of Interests by Members and Officers:- (see note below) (a) Disclosable Pecuniary Interests (b) Private Interests (pecuniary and non-pecuniary)	1-2
6	6_ terms of reference Details	5 - 6
7	7_Introduction to the role of the Corporate Parenting Su... Details	7 - 10
8	8_Summer term for virtual school Details	11 - 20
9	9_fostering support care policy Details	21 - 22
10	10_Service provision and development CAMHS Details	23 - 30
11	11_leaving care service Details	31 - 34
12	12_Work Programme Details	35 - 38

minutes



Meeting CORPORATE PARENTING SUB-COMMITTEE

Date Monday, 11 March 2013 (commencing at 2.00 pm)

Membership

Persons absent are marked with 'A'

COUNCILLORS

Allen Clarke (Chair)

	John Allin		Mel Shepherd
	Ged Clarke	A	Stella Smedley MBE JP
A	Bob Cross	A	Lynn Sykes
	Philip Owen	A	Brian Wombwell

Officers in attendance

Rachel Coombs	-	Group Manager, Children, Families and Cultural Services Department
Christine Marson	-	Assistant Democratic Services Officer, Policy, Planning & Corporate Services Department

MINUTES

RESOLVED 2013/007

That the minutes of the last meeting held on 14 January 2013 having been circulated were confirmed and signed by the Chair.

APOLOGIES FOR ABSENCE

Apologies for absence were received from Councillors Bob Cross (medical), Lynn Sykes (other) and Stella Smedley (medical).

DECLARATIONS OF INTEREST BY MEMBERS AND OFFICERS

None.

SPRING TERM REPORT FOR THE VIRTUAL SCHOOL FOR LOOKED AFTER CHILDREN

Rachel Coombs introduced the Spring term report for the Virtual School in the absence of Sue Denholm, the co-ordinator of the Virtual School. She explained that the Achievement event scheduled to take place in July was to celebrate

achievements gained by Looked After Children. She reported that between 110-120 young people and their carers had attended the previous year and it was a great success.

Rachel Coombs was asked about the Pupil Premium. She stated that 60 Looked After Children received the Pupil Premium whilst living outside the Nottinghamshire area, mostly in surrounding Local Authorities.

RESOLVED 2013/008

- (1) That the Sub-Committee noted the update on the virtual school for the Spring term 2013.
- (2) That the Co-ordinator of the Virtual School was asked to bring a report to a future meeting giving examples of benefits and outcomes of how the Pupil Premium is used.

PROGRESS ON THE LOOKED AFTER CHILDREN STRATEGY

Rachel Coombs was reported that there was significant progress on the action plan for the Looked After Children Strategy with all actions achieved on time or early.

RESOLVED 2013/009

That the Sub-Committee noted the update on the action plan for the Looked After Children Strategy.

FOSTER CARERS ITEMS

There were no foster carers present. Rachel Coombs reported that CAMHS would be attending a future meeting to update the Sub-Committee on any items which had been raised by the foster carers at the last meeting.

It was felt that it would be appropriate to have nominated substitutes for foster carers so that one could be present at each meeting as their input is invaluable in informing the Sub-Committee of any problems. It was suggested that when the foster carers have raised issues at the Sub-Committee, then a written report should be submitted to a future meeting to update on the issues.

The meeting closed at 2.17 pm

CHAIR

24th June 2013**Agenda Item: 6****REPORT OF THE CHIEF EXECUTIVE****TERMS OF REFERENCE****Purpose of the Report**

1. To note the Committee's terms of reference.

Information and Advice

This is a sub-committee of the Children and Young People's Committee

The Sub-Committee is responsible for the following:

Table
Responsibility for overseeing the County Council's responsibilities as the corporate parent of children and young people in care
Responsibility for championing the interests of children and young people in care

Other Options Considered

2. None.

Reason/s for Recommendation/s

3. To inform the committee of its terms of reference.

Statutory and Policy Implications

4. This report has been compiled after consideration of implications in respect of finance, equal opportunities, human resources, crime and disorder, human rights, the safeguarding of children, sustainability and the environment and those using the service and where such implications are material they are described below. Appropriate consultation has been undertaken and advice sought on these issues as required.

RECOMMENDATION/S

That the report be noted.

Mick Burrows
Chief Executive

For any enquiries about this report please contact: Christine Marson, Governance Support Officer, Democratic Services. Tel No. 977 3887

Constitutional Comments

5. As the report is for noting only, no constitutional comments are required.

Financial Comments

6. There are no financial implications arising directly from this report.

Background Papers

Except for previously published documents, which will be available elsewhere, the documents listed here will be available for inspection in accordance with Section 100D of the Local Government Act 1972.

- a) Report to Full Council – 29 March 2012 (published).
- b) Report to Full Council – 16 May 2013 (published).

Electoral Division(s) and Member(s) Affected

All

24 June 2013**Agenda Item: 7****REPORT OF THE SERVICE DIRECTOR, CHILDREN'S SOCIAL CARE****INTRODUCTION TO THE ROLE OF THE CORPORATE PARENTING SUB-COMMITTEE****Purpose of the Report**

1. To provide members with an introduction to the role of the Corporate Parenting Sub-Committee.

Information and Advice

2. In 1998 the then Secretary of State for Health wrote to all local authorities to emphasise the importance of the role of councillors in being 'corporate parents' for children and young people looked after by local authorities. This role has been endorsed by all relevant ministers since this time. The latest letter is from Edward Timpson MP, Parliamentary Under Secretary of State for Children and Families, which was sent on 5 June 2013 and is attached to this report as **Appendix 1**.
3. The role of 'corporate parents' recognises that if children who are looked after by the local authority are to thrive then all members, officers and partners must play their part. Currently Nottinghamshire is corporate parent to around 900 children and young people.
4. Being a good corporate means we should:
 - accept responsibility for children in the council's care
 - make their needs a priority
 - seek for them the same outcomes any good parent would want for their own children.
5. The Corporate Parenting Sub-Committee is presented with information about services to and outcomes of services to looked after children to note and to challenge. There are two foster carers who have been co-opted onto the Sub-Committee whose contributions are greatly valued. The Corporate Parenting Sub-Committee has strong links with the Children in Care Council.
6. A 'Looked After Children Strategy 2012-2015' has been developed. This is a partnership document which is based on 'The Pledge' which articulates our promises to children and young people in care. The Looked After Children Strategy, through its action plan, addresses the outcomes for children and young people on the following themes:

- participation and joining in
- education
- health
- safe and stable placements
- relationships
- identity
- moving to adulthood
- emotional wellbeing.

7. There will be regular reports to the Corporate Parenting Sub-Committee on the progress of the action plan and on all aspects of the service to children and young people in Nottinghamshire's care.

Other Options Considered

8. As this is a report for noting, it is not necessary to consider other options.

Reason/s for Recommendation/s

9. The report is for noting only.

Statutory and Policy Implications

10. This report has been compiled after consideration of implications in respect of finance, the public sector equality duty, human resources, crime and disorder, human rights, the safeguarding of children, sustainability and the environment and those using the service and where such implications are material they are described below. Appropriate consultation has been undertaken and advice sought on these issues as required.

Equalities Implications

11. Due regard has been given to the Public Sector Equality Duty.

RECOMMENDATION/S

- 1) That the introduction to the role of the Corporate Parenting Sub-Committee be noted.

Steve Edwards
Service Director, Children's Social Care

For any enquiries about this report please contact:

Rachel Coombs
 Group Manager, Access to Resources
 T: 0115 9774153
 E: rachel.coombs@nottsc.gov.uk

Constitutional Comments

12. As this report is for noting only, no Constitutional Comments are required.

Financial Comments (KLA 11/06/13)

13. There are no financial implications arising directly from this report.

Background Papers and Published Documents

Looked After Children Strategy 2012-2015

Except for previously published documents, which will be available elsewhere, the documents listed here will be available for inspection in accordance with Section 100D of the Local Government Act 1972.

Electoral Division(s) and Member(s) Affected

All.

C0244

24 June 2013**Agenda Item: 8****REPORT OF THE SERVICE DIRECTOR, EDUCATION STANDARDS AND
INCLUSION****SUMMER TERM REPORT FOR THE VIRTUAL SCHOOL FOR LOOKED
AFTER CHILDREN****Purpose of the Report**

1. To update the Corporate Parenting Sub-Committee on the virtual school for the Summer term 2013.

Information and Advice**Virtual School Senior Leadership Team and Virtual School Improvement Plan**

2. The senior leadership team (SLT) met on 26 March 2013 and reviewed progress on the 2012/13 virtual school improvement plan and self evaluation form (SEF). An updated data evaluation on key stage outcomes was shared at the meeting and it was agreed that achievement of looked after children in 2012 was good overall.
3. A further meeting has been arranged for 3 July 2013.

Virtual School Staff

4. The two Looked After Children Achievement Officers continue to support schools, social workers, carers and the wider network for looked after children. Caseloads are currently running at 390 for both workers covering the County.
5. Both officers continue to undertake training on the needs of looked after children. Both officers will be attending training in June 2013 with Kate Cairns on trauma and attachment needs of looked after children in educational settings.

Termly Designated Teacher Network Meetings

6. These meetings will be continuing in the Autumn term 2013. The Summer term meetings are not being held due to a County-wide conference taking place for all designated teachers.

Designated Teacher Memos

7. These continue to be sent out regularly, minimally half termly. The virtual school coordinator uses this method to communicate information, news and events to designated teachers across the County. Feedback from designated teachers and head teachers has been positive and encourages contact from all schools with the virtual school. Fronter continues to be a reference point for school staff and all resources are placed on this web site.

School Links

8. Requests continue to be received for training from the virtual school on the needs of looked after children cross phase.
9. All schools have once again been given access to the online training modules on attachment, trauma and behaviour. All schools will also be offered the opportunity to take part in workshops County-wide following the conference in June 2013.

East Midlands Network

10. The East Midlands Network meeting of virtual schools was held on 4 March 2013 in Northamptonshire. This was a positive meeting with a number of colleagues sharing Ofsted experiences which all virtual schools will use to inform development plans and SEFs.
11. A number of colleagues also attended a national conference for virtual heads. This was a useful conference with keynote speakers from Ofsted and the Children's Commissioner. It was shared at this event that the post of virtual head (or equivalent) will be made a statutory role for local authorities.

Social Care Links

12. The virtual school co-ordinator has met with the through care team and will also further meet with the looked after children team in June 2013.
13. The LAC Achievement Officers will also use the looked after social work team building as a base to work from in order to provide regular ongoing support to social workers.

Fronter

14. The Fronter room for the virtual school is now accessible to all schools. This will be continually updated with information available for schools on important aspects of education for looked after children.
15. The virtual school co-ordinator also works alongside the adoption service to support a Fronter room for adopters and there is also a Fronter room which supports foster carers.

Floor Target Schools

16. The virtual school continues to monitor looked after children in below floor target schools.
17. Reports received from improvement advisors to date indicate that young people in these schools are making progress in line with expectations. Spring term monitoring sheets have been sent out.

Data

18. Further developments on the virtual school's data management system have been made. SIMS has been sourced as an appropriate system. Training of staff in the use of SIMS was delivered in May 2013. Installation of the software has now been completed.
19. Work on collating a full data set from schools is underway. Schools that have not returned data for looked after children on request are being followed up by the data management team.

LAC Strategy Performance Measures

20. The updated evaluation of attainment and progress for looked after children at the end of key stages 1, 2 and 4 is attached as **Appendix 1**. The achievement and progress of Nottinghamshire looked after children is good overall at key stage 1 in reading, writing and mathematics, and compares favourably with national outcomes for looked after children. It is also good at the end of key stage 2 in English and mathematics at level 4 and above and once again compares favourably with national outcomes. The achievement of Nottinghamshire looked after children at the end of key stage 4 is good in terms of the proportion achieving five or more GCSEs at grades A* - C. However the attainment of Nottinghamshire looked after children at five A* – C grades including English and mathematics is an area for improvement. Although the targets set in the LAC Strategy were not met, improvements were seen on all indicators in comparison with 2011.

Achievement Event

21. Planning has begun for the 2013 Achievement Event to be held at Rufford Park once again following positive feedback concerning the venue. The date has been fixed for 6 July 2013.

Pupil Premium

22. This has now been distributed to all schools in and out of the local authority. The virtual school co-ordinator will write out to all schools in six months time to establish the impact of the payments on looked after children's educational attainment.

Projects

23. The 2012/13 multi-modality project is underway and going very well. Over 20 children and young people are taking part. The celebration event at the end of the project is booked at Rufford Park in June 2013.

24. The virtual school is supporting a music based project with colleagues from the local authority's music and arts service that will offer a chance of accreditation in an arts award and an opportunity to experience many styles of music. This project will be aimed at young people who may be vulnerable to exclusions, particularly in the run up to holidays.

Personal Education Plan

25. The new paperwork is now with the new looked after children social work team and any completed Personal Education Plans (PEPs) will be forwarded to the virtual school co-ordinator for quality assurance purposes. The aim is to have the updated and improved PEP documentation in circulation for all looked after children of school age by January 2014. The Children in Care Council has been consulted on the child/young person input section and this will be in a booklet format. The co-ordinator is to attend the Council again for further discussions on the layout.

Good News

26. Book tokens have been sent out once again to children and young people for a variety of successes, including attendance, participation and achievement.
27. A young person has won first prize in a national poetry competition and has been acknowledged for his achievement.
28. One secondary school has also continued to have a group of looked after children meet together regularly for support and social time. This group has been visiting primary schools to assist in transition to secondary school. This has been very positively evaluated and book tokens have been sent to all children who participated.

Other Options Considered

29. This report is for information only.

Statutory and Policy Implications

30. This report has been compiled after consideration of implications in respect of finance, public sector equality duty, human resources, crime and disorder, human rights, the safeguarding of children, sustainability and the environment and those using the service and where such implications are material they are described below. Appropriate consultation has been undertaken and advice sought on these issues as required.

Equalities Implications

31. Due regard has been given to the Public Sector Equality Duty.

RECOMMENDATION/S

- 1) That the Corporate Parenting Sub-Committee notes the update on the virtual school for the Summer term 2013.

John Slater

Service Director, Education Standards and Inclusion

For any enquiries about this report please contact:

Sue Denholm

Co-ordinator of the Virtual School

T: 01623 434149

E: sue.denholm@nottsccl.gov.uk

Constitutional Comments

32. As this report is for noting only, no Constitutional Comments are required.

Financial Comments (KLA 31/05/13)

33. There are no financial implications arising directly from this report.

Background Papers

Looked After Children Strategy – report to Policy Committee on 18 July 2012

Looked After Children Strategy update – report to Policy Committee on 16 January 2013

Except for previously published documents, which will be available elsewhere, the documents listed here will be available for inspection in accordance with Section 100D of the Local Government Act 1972.

Electoral Division(s) and Member(s) Affected

All.

C0233

**Progress report for the Virtual School
Evaluation of end of key stage outcomes 2012 update**

The LAC outcomes are based on the national statistical first release (SFR) published in December 2012. This includes all our LAC pupils regardless of in/out of County school placement. The previous year's figures have been updated based on the SFR.

The KS 1 outcomes are based on County data as this is not included in the SFR

Year 2 end of KS1

The proportion of Nottinghamshire LAC achieving at least level 2 in reading

- The proportion of LAC in Nottinghamshire achieving at least level 2 in reading is 79% and is above both LAC across the East Midlands (68%) and nationally (67%)
- The proportion of all children in Nottinghamshire and nationally achieving at least level 2 in reading is 87%
- The gap between all children and LAC in Nottinghamshire is 8% on this measure, compared with a national gap of 20%.

Achievement and progress of Nottinghamshire LAC on this measure is good.

The proportion of Nottinghamshire LAC achieving at least level 2 in writing

- The proportion of LAC in Nottinghamshire achieving at least level 2 in writing is 67% and is above both LAC across the East Midlands (57%) and nationally (57%)
- The proportion of all children in Nottinghamshire achieving at least level 2 in writing is 84%, which is 1% above the national average for all children (83%)
- The gap between all children and LAC in Nottinghamshire is 17% on this measure, compared with a national gap of 26%.

Achievement and progress of Nottinghamshire LAC on this measure is good.

The difference in the proportions of children achieving this level in writing compared with reading is lower for writing in Nottinghamshire, across the East Midlands and nationally.

The proportion of Nottinghamshire LAC achieving at least level 2 in mathematics

- The proportion of LAC in Nottinghamshire achieving at least level 2 in mathematics is 79% and is above both LAC across the East Midlands (68%) and nationally (71%)

- The proportion of all children in Nottinghamshire and nationally achieving at least level 2 in mathematics is 91%
- The gap between all children and LAC in Nottinghamshire is 12% on this measure, compared with a national gap of 20%.

Achievement and progress of Nottinghamshire LAC on this measure is good.

Year 6 end of KS2

The proportion of Nottinghamshire LAC achieving at least level 4 in English

- The proportion of LAC in Nottinghamshire achieving at least level 4 in English is 61%, which is an improvement of 6% in comparison with 2011 and continues a rising trend since 2009 in line with the East Midlands and national trend of improvement
- The performance of Nottinghamshire LAC is above both LAC across the East Midlands (59%) and nationally (60%)
- The proportion of all children in Nottinghamshire achieving at least level 4 in English is 87%, which is 1% above the national average for all children (86%)
- The gap between all children and LAC in Nottinghamshire is 26% on this measure in line with a national gap of 26%.

The proportion of Nottinghamshire LAC making 2 levels progress in English

- The proportion of LAC in Nottinghamshire schools making 2 levels progress from Key Stage 1 to 2 in English remains in line with the proportion making expected progress nationally (79%/75% national/Notts).

Achievement and progress of Nottinghamshire LAC is good

The proportion of Nottinghamshire LAC achieving at least level 4 in mathematics

- The proportion of LAC in Nottinghamshire achieving at least level 4 in mathematics is 56% and is above both LAC across the East Midlands (55%) and in line with national (56%)
- The proportion of all children in Nottinghamshire achieving at least level 4 in mathematics is 86%, which is 2% above the national average for all children (84%)
- The gap between all children and LAC in Nottinghamshire is 30% on this measure, compared with a national gap of 28%
- This is broadly in line with the national gap and the difference is due to the better performance of all children in Nottinghamshire compared with all children nationally, rather than any underperformance of LAC.

The proportion of Nottinghamshire LAC making 2 levels progress in mathematics

- The proportion of LAC in Nottinghamshire schools making 2 levels progress from Key Stage 1 to 2 in mathematics remains in line with the proportion making expected progress nationally (73%/73% national/Notts).

Achievement and progress of Nottinghamshire LAC is good.

The proportion of Nottinghamshire LAC achieving at least level 4 in both English and mathematics

- The proportion of LAC in Nottinghamshire achieving at least level 4 in both English and mathematics is 50% and is above LAC across the East Midlands (49%) and in line with national (50%)
- The proportion of all children in Nottinghamshire achieving at least level 4 in both English and mathematics is 82% and is above both East Midlands and national (79%)
- The gap between all children and LAC in Nottinghamshire is 32% on this measure, compared with a national gap of 29%
- This is broadly in line with the national gap and the difference is due to the better performance of all children in Nottinghamshire compared with all children nationally, rather than any underperformance of LAC.

Achievement and progress of Nottinghamshire LAC is good.

Year 11 end of KS 4

The proportion of Nottinghamshire LAC achieving at least 5 or more GCSEs at grades A*-C

- The proportion of LAC in Nottinghamshire achieving at least 5 or more A*-C grades is 44%, which is an improvement of 11.2% in comparison with 2011 and continues a rising trend since 2009
- The rate of improvement for Nottinghamshire LAC on this measure is faster than the national trend of improvement and in line with the rate of improvement across the East Midlands
- The performance of Nottinghamshire LAC is above both LAC across the East Midlands (35%) and nationally (37%)
- The proportion of all children in Nottinghamshire achieving at least 5 or more A*-C grades is 87%, which is 6% above the national average for all children (81%)
- The gap between all children and LAC in Nottinghamshire is 43% on this measure, compared with a national gap of 44%.

Achievement of Nottinghamshire LAC on this measure is good

The proportion of LAC in Nottinghamshire schools achieving at least 5 or more GCSEs at grades A*-C including English and mathematics

- The proportion of LAC in Nottinghamshire schools achieving at least 5 or more A*-C grades including English and mathematics is 9.8%, which is a dip on 2011 (4.8%) and equates to 2.5 children
- The outcome in 2012 is the same as it was in 2010
- The proportion of all children in Nottinghamshire achieving at least 5 or more A*-C grades including English and mathematics is 61%, which is 2% above the national average for all children (59%)
- The gap between all children and LAC in Nottinghamshire is 51.2% on this measure, compared with a national gap of 44%
- The gap in Nottinghamshire is greater than the national gap

The proportion of LAC making three levels of progress in English and in mathematics:

- The proportion of LAC in Nottinghamshire schools making 3 levels progress from Key Stage 2 to 4 in English is in line with the proportion making expected progress nationally
- The proportion of LAC in Nottinghamshire schools making 3 levels progress from Key Stage 2 to 4 in mathematics is in line with the proportion making expected progress nationally (28.2%/34% national/Notts).

Overall

The achievement of LAC at all key stages is either above or in line with national data on all measures except for 5 or more GCSE grades at A*-C including English and mathematics. The gap widens as children move from early years to primary and from primary to secondary, as is the case nationally. Progress is good in all key stages. However, improving attainment and progress at KS4 in order to narrow the achievement gap and further improve progress remains a priority for the virtual school.

C0333a

24 June 2013**Agenda Item: 9**

REPORT OF THE SERVICE DIRECTOR, CHILDREN'S SOCIAL CARE FOSTERING SUPPORT CARE POLICY

Purpose of the Report

1. To inform Corporate Parenting Sub-Committee of the newly developed Fostering Support Care Policy, attached as **Appendix 1** to this report.

Information and Advice

2. In 2011 a Serious Case Review was initiated in relation to a foster carer who was found guilty of sexually abusing a number of children in his care as well as other young people. One of the actions arising from the review was the need to put a new fostering support care policy in place which clearly identified the legal routes for any such placement, the payments for these and, most importantly, ensured that it made arrangements for children to voice their experiences of these placements. The action from the Serious Case Review stipulated that this report should be shared with members of the Corporate Parenting Sub-Committee.

Other Options Considered

3. No other options have been considered.

Reason/s for Recommendation/s

4. It is important for members to be aware of this policy, which has been followed since February 2013, given the concerns expressed in the report of the Serious Case Review (DN11).

Statutory and Policy Implications

5. This report has been compiled after consideration of implications in respect of finance, the public sector equality duty, human resources, crime and disorder, human rights, the safeguarding of children, sustainability and the environment and those using the service and where such implications are material they are described below. Appropriate consultation has been undertaken and advice sought on these issues as required.

Equalities Implications

6. Due regard has been given to the Public Sector Equality Duty.

RECOMMENDATION/S

- 1) That the newly developed Fostering Support Care Policy be noted.

Steve Edwards
Service Director, Children's Social Care

For any enquiries about this report please contact:

Rachel Coombs
Group Manager, Access to Resources
T: 0115 9774153
E: rachel.coombs@nottsccl.gov.uk

Constitutional Comments

7. As this report is for noting only, no Constitutional Comments are required.

Financial Comments (KLA 11/06/13)

8. There are no financial implications arising directly from this report.

Background Papers and Published Documents

None.

Electoral Division(s) and Member(s) Affected

All.

C0242

24 June 2013**Agenda Item: 10****REPORT OF THE SERVICE DIRECTOR, CHILDREN'S SOCIAL CARE****SERVICE PROVISION AND DEVELOPMENTS WITHIN THE COUNTY CAMHS
CHILDREN LOOKED AFTER AND ADOPTION TEAM 2012/13****Purpose of the Report**

1. To provide an update on the work and service developments of the County CAMHS (Child and Adolescent Mental Health Service) Children Looked After and Adoption Team.

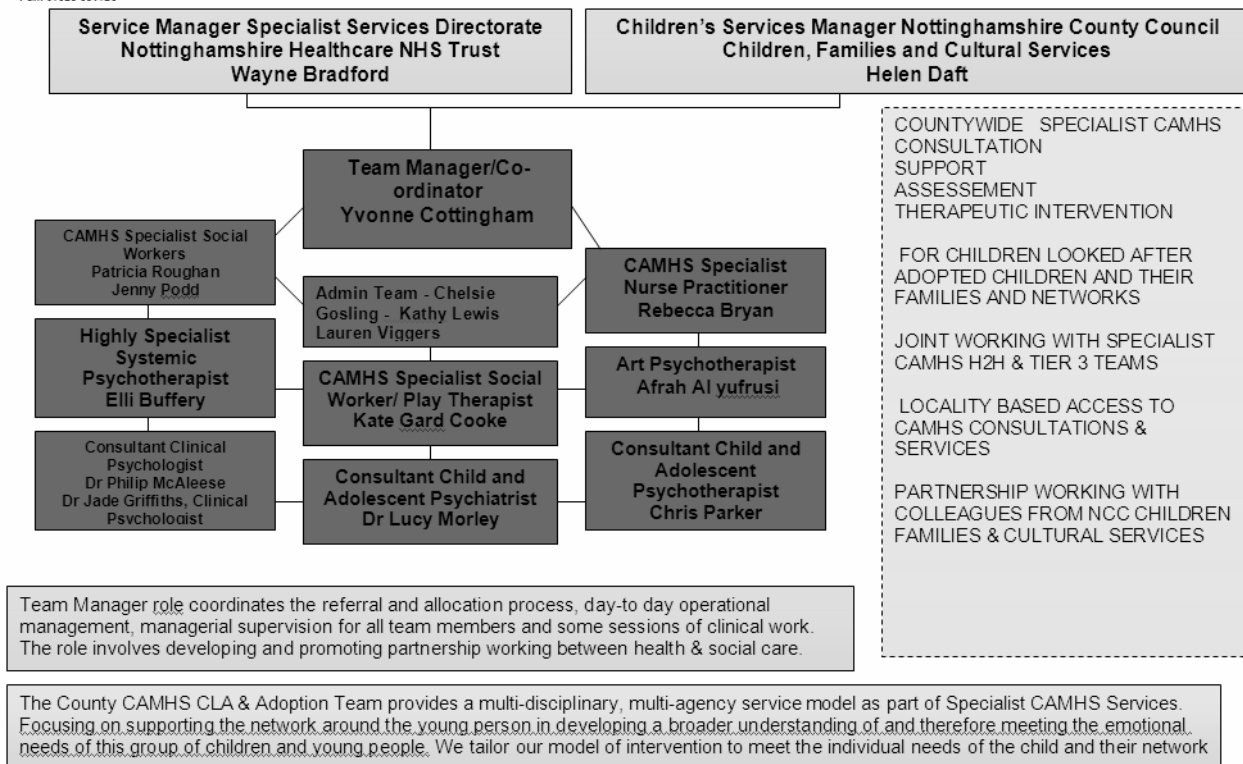
Information and Advice

2. The County CAMHS Children Looked After (CLA) and Adoption Team was established in 2001. The team was restructured in 2007 and has developed into the service currently offered. The Child and Adolescent Mental Health Service (CAMHS) provide a service for children 0 -18 years of age, where there are concerns about their emotional well-being or mental health.
3. The County Children Looked After Team and Adoption Team is jointly commissioned by Nottinghamshire County Council and Nottinghamshire NHS Trust. The team is based within the Specialist CAMHS Service, Specialist Service Directorate, Nottinghamshire Healthcare NHS Trust.

Team Structure

4. As illustrated in the team model overleaf, the team is multi-agency, made up of professionals, some of whom are employed by Nottinghamshire NHS Trust and others by Nottinghamshire County Council. The team is multi-disciplinary, made up of professionals who have undertaken different types of training, including: Clinical Psychology, Specialist Social Worker, Specialist Nurse Practitioner, Psychiatry, Child & Adolescent Psychotherapy, Systemic Family Therapy, Play Therapy, and Art Psychotherapy. The team is supported by an administration team and lead by a Team Manager/Coordinator.

County CAMHS Children Looked After and Adopted Team model



Aims of the Service

5. The team is commissioned to specifically work with children and young people who are looked after and living away from their birth parents, in the care of Nottinghamshire Children's Social Care Services. These children and young people may be living with foster carers or living in residential care. The team also offers specialist consultation and support to children/young people who have been adopted, and their families.
6. The team is a multi-disciplinary, multi agency team whose purpose is to assess the mental health needs and promote the psychological well-being of:
 - young people within Nottinghamshire who are living with foster carers or living in residential care
 - young people who have been adopted, and their families, or for whom adoption is being explored / planned
 - young people who are looked after or adopted and placed in Nottinghamshire by other local authorities/health trusts.

Referral Pathway to access a service from CAMHS CLA & Adoption Team

7. An initial CAMHS consultation with the young person's social worker is the referral pathway to accessing a service from the CAMHS CLA & Adoption Team. The child/young person's Social Worker is asked to complete a consultation request form and book an initial consultation appointment, where the social worker will usually meet with two members of the team. Following the consultation, the CAMHS clinicians will provide a written record of the consultation detailing the ongoing CAMHS plan. This information is also shared with the child/young person's GP and the Designated Nurse for Children in Care.

Access

8. To ensure ease of access to the service a total of 25 monthly initial CAMHS consultations are offered for social workers at the following Countywide venues:
 - Through Care Team
Fortnightly consultations (6 per month)
Venue - Bevercotes/Welbeck House, Ollerton
 - Adoption Service & Permanency Team
Fortnightly consultations (8 per month)
Venue - Chadburn House, Mansfield
 - Nottinghamshire County Council Children's Residential Homes
Monthly consultations at the 3 mainstream Residential Homes within the County (Lyndene, Westview and Oakhurst). The sessions are with the young person's key worker at the residential home. The young person's social worker is also invited to attend.
 - Other Initial CAMHS Consultations
Weekly consultations (8 per month)
Venue - St John's Street, Mansfield or Thorneywood, Nottingham
9. Examples of the referrals for these initial consultations are:
 - GP or Community Paediatric referrals for adoptive families not currently receiving social worker support. To access a service from the team these families receive a standard letter and consultation request form to complete and are asked to contact the administration team to arrange an appointment
 - Referrals for children young people who are looked after or adopted and placed in Nottinghamshire by other local authorities and health trusts. The social worker for the child/young person will receive a standard letter and consultation request forms advising them of how to access a service. In line with Responsible Commissioner Guidelines there is a charge for a CAMHS service from this team
 - For looked after and adopted children/young people from Nottinghamshire who are placed outside of Nottinghamshire, their social worker will need to make a referral to the local CAMHS team in the area where the child young person is

placed. If required the CAMHS Children Looked After & Adoption Team can support the social worker with this

- Urgent Referrals - to access support for a child young person following an episode of self harm, the young person will need to attend their local hospital Accident & Emergency Department to be assessed by the on call team. A follow up appointment will be offered based on the assessment of the on call team.

Follow up and on-going consultations

10. Following the initial consultation with the social worker, further consultations are arranged and would usually include the foster carers for the children/young people, education staff and/or other relevant people from the child/young person's network.
11. Dependent on where the child/young person is in the adoption process, the child/young person's network can vary for adoptive families.
12. The consultation model offers the network around the child a space to reflect on the complex issues they are dealing with and it provides the opportunity for a shared understanding of the powerful emotions and experiences of the young person. It provides the opportunity for containing anxieties in the network generated around the child. It offers an alternative to therapy for a child who may not be in a secure long term placement, but where some form of intervention is needed to help the child reach this goal and improve their long term prospects.
13. Consultation can function to encourage all members of the network to remain fully engaged in improving the quality of life of the young person, rather than handing over responsibility for providing a 'cure' to 'experts'. The consultation model of working with Looked after Children continues to be a NICE/SCIE (National Institute for Health and Care Excellence/Social Care Institute for Excellence) quality standard¹ recommendation as follows:

"a consultancy service could be designed and delivered by in-house experts, external advisers or child and adolescent mental health services. This can contribute to children's needs being met and placements being more effectively supported. The approach should be based on the concept of reflective practice and how to manage conflicting views in the team."

On-going work

14. The model of intervention is tailored to meet the individual needs of the child and their network, based on the evidence base, NICE guidelines, the views and skills of the client and their family/foster carers, and practice based evidence.
15. Beginning with the initial assessment and plan of intervention formulated at the Initial CAMHS consultation, there is an ongoing process of individualised psychological formulation and intervention, reviewed with the network via the consultation process.

¹ QS 31 Health and wellbeing of looked after children and young people – issued April 2013, NICE

This process may identify and agree the need for additional interventions with the young person and their network.

16. Alongside ongoing consultation the following additional integrative interventions may be introduced: fostering attachments; therapeutic parenting or attachment focused family based interventions such as Theraplay; Dyadic Developmental Psychotherapy or Systemic Psychotherapy.
17. The team can also provide specific diagnostic assessment, as well as the prescribing and reviewing of medication. Individual play therapy, art therapy and psychotherapy are also offered when assessed as appropriate to meet the formulated need.

Theraplay

18. All members of the team have completed Theraplay training and two members of the team are currently working towards accreditation in Theraplay. They are working closely with social work colleagues within Children's Social Care Services, the Adoption Service, and colleagues in Targeted Support Services. This involves a process of joint working and monthly peer consultation and supervision.

Dyadic Developmental Psychotherapy (DDP)

19. All members of the team have completed Level 1 training in DDP and some are working towards therapist accreditation. The team has developed a Nottinghamshire Special Interest Group for DDP, which links with the National DDP Special Interest Groups facilitated by the DDP UK based Accredited Consultants. DDP is an 'attachment' focused 'family' based intervention.
20. At a DDP Conference in Manchester in 2012, Nottinghamshire Healthcare NHS Trust and Nottinghamshire County Council were recognised for their commitment to DDP. Alongside this the CAMHS CLA and Adoption Team and colleagues in the Nottinghamshire County Council Fostering Futures Team are in discussion with a researcher from Glasgow University in relation to being involved in a national feasibility study and subsequent randomised control trial of DDP, thereby developing the evidence base of DDP in the UK within a Nottinghamshire base. This would support the further development of NICE/SCIE guidance for children who have experienced maltreatment in early life.

Fostering Attachments Group

21. Over the past year the CAMHS CLA and Adoption Team has developed and provided an 18 week therapeutic group for foster carers. The aim of the group is to support foster carers to increase their understanding of how to meet the unmet emotional needs of the young people they are caring for. The two groups completed so far have received positive evaluation from the participants, as illustrated in **Appendix 1**. A third group is currently running and the plan is for this to become an ongoing intervention. The team has now extended the fostering attachments group to colleagues working within Residential Care. A group for workers from

Nottinghamshire County Council Children's Residential Homes Lyndene, Oakhurst and West View is currently being piloted.

Foster Carers Induction Training

22. Alongside colleagues in the fostering service, education, health and youth services foster carers attend the foster carers induction programme, which runs twice a year. This enables new foster carers to gain an understanding of the range of services available for children who are looked after within Nottinghamshire.

Community of Interest for Children in Care

23. In partnership with colleagues in the CAMHS City CLA team and colleagues in the Children in Care Health team, a Community of Interest for Children in Care has been successfully established with the aim of establishing a network of people with shared vision for improving the physical and mental health needs of Children in Care.

Strength & Difficulty Questionnaire (SDQs)

24. The CAMHS Children Looked After and Adoption Team has incorporated this questionnaire into their referral process and have been liaising with social care colleagues to determine routine collection of the SDQ data which enables joint monitoring processes to regularly 'score' the emotional health of each child in care. This data highlights those children and young people who would benefit from CAMHS involvement and allows inter-agency checks to identify existing service provision or indeed gaps in service.

Other options considered

25. As this is a report for noting, it is not necessary to consider other options.

Reason/s for Recommendation/s

26. To update the Corporate Parenting Sub-Committee on the work and service developments of the County CAMHS Children Looked After and Adoption Team.

Statutory and Policy Implications

27. This report has been compiled after consideration of implications in respect of finance, the public sector equality duty, human resources, crime and disorder, human rights, the safeguarding of children, sustainability and the environment and those using the service and where such implications are material they are described below. Appropriate consultation has been undertaken and advice sought on these issues as required.

Equalities Implications

28. Due regard has been given to the Public Sector Equality Duty.

RECOMMENDATION/S

- 1) That the update on the work and service developments of the County CAMHS (Child and Adolescent Mental Health Service) Children Looked After and Adoption Team be noted.

Steve Edwards
Service Director, Children's Social Care

For any enquiries about this report please contact:

Helen Daft
Children's Service Manager
T: 0115 97 74447
E: helen.daft@nottsccl.gov.uk

or

Yvonne Cottingham
Team Manager, CAMHS
T: 0115 9560843
E: yvonne.cottingham@nottsccl.gov.uk

Constitutional Comments

29. As this report is for noting only, no Constitutional Comments are required.

Financial Comments (KLA 11/06/12)

30. There are no financial implications arising directly from this report.

Background Papers and Published Documents

None.

Electoral Division(s) and Member(s) Affected

All.

C0243

Qualitative Feedback from the Fostering Attachments Group

Positive aspects of the group:

Group Dynamics - carers found talking and listening to other carers useful as it reminded them that they are not alone in struggling with the children they care for. Carers also reported that listening to (successful and unsuccessful) ideas and strategies of other carers gave them ideas as to how they might approach their children. It also helped some carers to appreciate that they have quite a lot of knowledge around attachment and are good carers.

Develop reflective skills - carers reported that the group helped them to develop reflective skills when thinking about their children and their needs. This has meant that carers have been able to identify when behaviours are not directed personally at them, but are strategies used to feel safe or process the past that are not always within the child's conscious awareness.

High level of detail - carer's valued the detail the group went into when thinking about attachment and children's behaviour. Carers felt that it was far more in-depth than any of their agency training had been and gave them some useful strategies for managing behaviour whilst meeting the children's needs.

Particularly useful topics - carers reported finding the sessions on PACE, re-attunement, shame & guilt, time holes and age related/brain development particularly useful.

Suggestions for future groups:

To be offered to new carers - carers that had been caring for children for years commented that they would have liked to have attended the course much earlier in their fostering career as they could see how some of the knowledge and skills they were developing would have been beneficial to children they have looked after in the past.

Role-play - carers also felt that doing role-play was not particularly helpful and would have preferred to have done less of it. It seems as though at times they felt exposed whilst role-playing and their anxieties about being observed by other carers and the group facilitators inhibited their ability to do this as well as they'd have liked or felt they could do.

Large commitment - some foster carers felt that whilst they appreciated the in-depth nature of the course, 2½ hours weekly for 18 weeks was a large commitment to make.

Summary

Overall foster carers particularly valued the in-depth content and reflective nature of the group and reported a reduction in levels of stress. Feedback would suggest that as carers gained a greater understanding of the impact of their children's early experiences on their attachment behaviours, their perception of their children's presentation and difficulties altered. Foster carers seemed more aware of and able to meet their child's 'hidden needs' and subsequently noticed a reduction in their children's difficulties, particularly their emotional difficulties.

24 June 2013**Agenda Item: 11****REPORT OF THE SERVICE DIRECTOR, CHILDREN'S SOCIAL CARE****LEAVING CARE SERVICE UPDATE****Purpose of the Report**

1. To provide an update on the Leaving Care Service, with particular reference to the review of the service.

Information and Advice

2. The provision of an advice and assistance service to young people aged 16 to 25 who are leaving the care of the Local Authority is enshrined in legislation. The Local Authority has a duty to ensure that eligible young people have a named personal adviser who is responsible for co-ordinating a Pathway Plan which sets out the young person's goals and the services needed to help them achieve these as they prepare for adulthood and begin independent lives.
3. The focus of this support is to help care leavers maximise their employability through access to appropriate education and training, to find and sustain safe and stable, affordable accommodation and to ensure that care leavers have a named adult who they can turn to for advice and guidance when needed.
4. The support offered through our Leaving Care Service includes a named personal adviser, financial help with further and higher education (fees, travel and accommodation, resources such as equipment), help with benefits and meeting Job Centre Plus requirements, finding and sustaining appropriate training and education, access to health care, finding appropriate accommodation whether social housing or private tenancies and financial support to set up a first home, a Staying Put Scheme that allows young people to stay with foster carers post 18 years, and help with independent living skills.
5. The team currently comprises 13.1 fte Personal Advisers (unqualified staff), 8.4 fte Qualified Social Workers, 2.4 fte Team Managers and a 0.5 fte Children's Services Manager. In addition there are 3 fte Education, Employment and Training Advisers and a 0.6 fte Accommodation Officer. The service is currently split into three teams based across the County on locality boundaries.
6. There are currently 350 young people aged 16 to 25 years who are eligible for this service, with approximately 100 looked after children (LAC) aged 16 and 17 years and 250 over 18 years.

Service Review

7. As part of the Children's Social Care Transformation agenda, the service was reviewed between January and March 2013 to ensure that it continued to meet the needs of the newly created Through Care Service for looked after children. The review also considered the challenge of continued budget pressures by focusing on the efficient use of resources. As the service currently includes qualified and unqualified staff the review looked at whether these staff groups could be used more effectively.
8. The review was carried out by the Children's Social Care Transformation Team and included:
 - care leaver consultation, including the Children in Care Council and groups of care leavers
 - shadowing of Leaving Care staff in order to understand the role
 - consultation with education advisers, a supported accommodation officer and team managers.

Headline Findings

9. The headline findings of the review were as follows:
 - the number of care leavers is increasing year on year in line with the County's growing population of looked after children
 - there will be a net increase of 82 cases for the service over the next 12 months
 - the average caseload for personal advisers is 16. Benchmarking against national provision revealed the national average is 22
 - 114 young people have an allocated qualified social worker from the Looked After Children (LAC) Service and a personal adviser from the Leaving Care Team.
 - the performance of LAC social workers in completing Pathway Plans for 16 and 17 year olds in care is unsatisfactory in terms of timescales, standard, and inclusion of young people's views
 - our education, employment and training rates are above the national average
 - young people were confused by the roles of workers but felt that personal advisers treated them like adults whereas social workers 'nagged' them
 - young people wanted fewer changes of social worker
 - for young people money and accommodation was more important than education
 - the Department for Education confirmed that the statutory role of personal adviser could be undertaken by the social worker responsible for the looked after child's case. Prior to this long awaited clarity, case law had dictated that the roles were separate

and that 16 and 17 year old looked after children had to have both a social worker and a personal adviser.

Summary of Changes

10. The Leaving Care Service will move to become a non qualified 18+ service. It will comprise 13.1 fte Personal Advisers, 1.6 fte Team Managers and a 0.5 fte Children's Services Manager. There will be no decrease in personal adviser numbers for this service as caseloads are expected to rise over the next few years. The dis-establishment of the Supported Accommodation officer is in the process of being considered.
11. 8.4 fte Qualified Social Workers and a 0.8 fte Leaving Care Team Manager will transfer to the Looked after Children Service. This group of staff will continue to work primarily with the older looked after young people and will take a lead role in Pathway Planning for this age group although not exclusively. It is expected that leaving care social workers, with their expertise with this age group, will improve the quality of planning for children as they make plans to exit care at 18 years.
12. Cases will stay with the LAC Service until the young person reaches 18 years old or until they are no longer looked after. If the young person is entitled to a personal adviser then the LAC social worker will fulfil this role in addition to managing the young person's care and pathway planning. At 18 years old the case will transfer to the Leaving Care Service for ongoing advice and assistance.
13. Given the importance of education and training for a young person's economic future and employability, it has been agreed that the Education and Training Officers will remain. Two workers will work in the Leaving Care Service and one in the LAC Service. These roles will focus on improving education and training planning for 16 to 18 year old looked after children and maximising education and employment opportunities for care leavers. Job descriptions are being revised to maximise their input and expertise within the new structure.
14. Nottinghamshire Futures has confirmed that it will continue to second a worker to work with this age group within the service.

Other Options Considered

15. The report is for noting only.

Reason/s for Recommendation/s

16. To update the Committee on the Leaving Care Service.

Statutory and Policy Implications

17. This report has been compiled after consideration of implications in respect of finance, the public sector equality duty, human resources, crime and disorder, human rights, the safeguarding of children, sustainability and the environment and those using the service and where such implications are material they are described below. Appropriate consultation has been undertaken and advice sought on these issues as required.

Equalities Implications

18. Due regard has been given to the Public Sector Equality Duty

RECOMMENDATION/S

1) That the update on the Leaving Care Service be noted.

Steve Edwards
Service Director, Children's Social Care

For any enquiries about this report please contact:

Michelle Lee
Children's Services Manager, Leaving Care
T: 01623 520520 /520708
E: michelle.lee@nottsccl.gov.uk

Constitutional Comments

19. As this report is for noting only, no Constitutional Comments are required.

Financial Comments (initials 12/06/13)

20. There are no financial implications arising directly from this report.

Background Papers and Published Documents

None.

Electoral Division(s) and Member(s) Affected

All.

C0236

24 June 2013

Agenda Item: 12

**REPORT OF CORPORATE DIRECTOR, POLICY, PLANNING AND
CORPORATE SERVICES**

WORK PROGRAMME

Purpose of the Report

1. To consider the Committee's work programme for 2013/14.

Information and Advice

2. The County Council requires each committee to maintain a work programme. The work programme will assist the management of the committee's agenda, the scheduling of the committee's business and forward planning. The work programme will be updated and reviewed at each pre-agenda meeting and committee meeting. Any member of the committee is able to suggest items for possible inclusion.
3. The attached work programme has been drafted in consultation with the Chairman and includes items which can be anticipated at the present time. Other items will be added to the programme as they are identified.

Other Options Considered

4. None.

Reason/s for Recommendation/s

5. To assist the committee in preparing its work programme.

Statutory and Policy Implications

6. This report has been compiled after consideration of implications in respect of finance, equal opportunities, human resources, crime and disorder, human rights, the safeguarding of children, sustainability and the environment and those using the service and where such implications are material they are described below. Appropriate consultation has been undertaken and advice sought on these issues as required.

RECOMMENDATION/S

- 1) That the committee's work programme be noted, and consideration be given to any changes which the committee wishes to make.

Jayne Francis-Ward
Corporate Director, Policy, Planning and Corporate Services

For any enquiries about this report please contact: Assistant Democratic Services Officer -

Christine Marson
Tel: 0115 977 3887

Constitutional Comments (SLB)

7. The Committee has authority to consider the matters set out in this report by virtue of its terms of reference.

Financial Comments (PS)

8. There are no financial implications arising directly from this report.

Background Papers

Except for previously published documents, which will be available elsewhere, the documents listed here will be available for inspection in accordance with Section 100D of the Local Government Act 1972.

Electoral Division(s) and Member(s) Affected

All

CORPORATE PARENTING SUB-COMMITTEE - WORK PROGRAMME 2013-14

<u>Report Title</u>	<u>Brief summary of agenda item</u>	<u>Lead Officer</u>	<u>Report Author</u>
16 September 2013			
Progress on the LAC Strategy	Six monthly report	Steve Edwards	Rachel Coombs
Progress on Adoption/Permanency Team		Steve Edwards	Rachel Coombs
End of year report for the Independent Reviewing Officer service		Steve Edwards	Rachel Coombs
Officer groups report	Annual report on: Adoption Panels; Fostering Panels; Joint Solutions Forum; Looked After Reviews; Child Protection Conferences; MAPPA; MARAC	Steve Edwards	Steve Edwards
Work Programme			
9 December 2013			
Autumn Term report for the Virtual School for Looked After Children		Steve Edwards	Sue Denholm
Work Programme			
17 March 2014			
Spring Term report for the Virtual School for Looked After Children		Steve Edwards	Sue Denholm
End of year report for the Independent Reviewing Officer service 2012-13	Annual report	Steve Edwards	Pam Rosseter
Progress on the LAC Strategy	Six monthly report	Steve Edwards	Rachel Coombs
Work Programme			
16 June 2014			
Officer groups report	Annual report on: Adoption Panels; Fostering Panels; Joint Solutions Forum; Looked After Reviews; Child Protection Conferences; MAPPA; MARAC	Steve Edwards	Steve Edwards
Work Programme			
To be placed			

