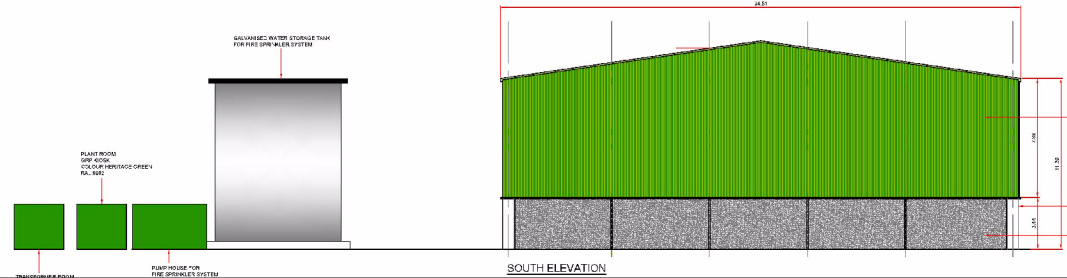
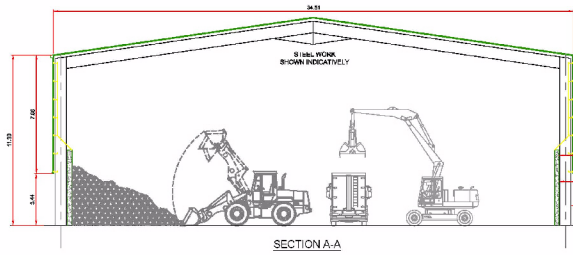
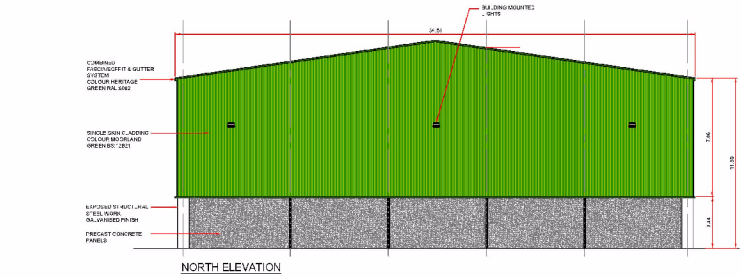
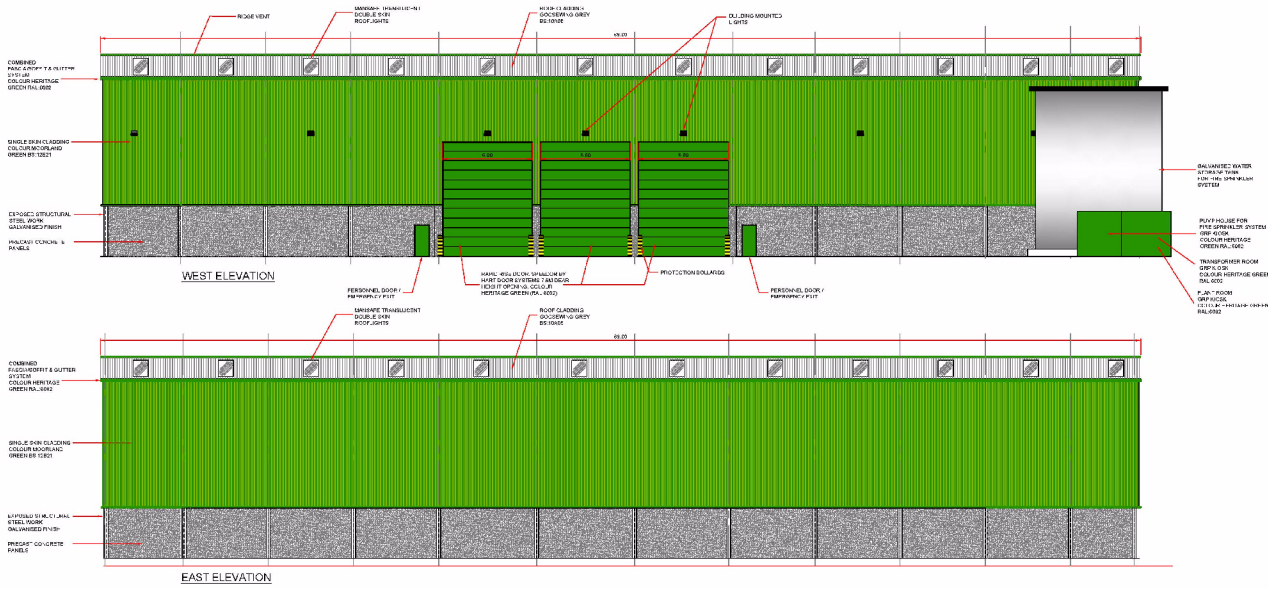


Drawn No. VES_TD_WCROFT_300_005



P3	GENERAL AMENDS	IR	LH	JB	01.10.15
P2	BUILDING AMENDED	IR	LH	-	29.09.15
P1	PLANNING ISSUE	RP	MM	-	07.08.15
P	INFORMATION	RC	SM	-	03.06.15

Rev	Description of revision	Drawn	Check	App	Date
1	GENERAL AMENDS	IR	LH	JB	01.10.15
2	BUILDING AMENDED	IR	LH	-	29.09.15
3	PLANNING ISSUE	RP	MM	-	07.08.15
4	INFORMATION	RC	SM	-	03.06.15

VEOLIA
ENVIRONMENTAL SERVICES
Technical Director,
8th Floor, 210 Pentonville Road, London, N1 9JY
Tel: 0207 812 5189

WELSHCROFT CLOSE WTS

PROPOSED WTS BUILDING ELEVATIONS

Drawn	Check	Date	Scale	Sheet size
RC	SM	03.06.15	1:150@A1, 1:300@A3	A1

Job No: WCROFT



Proposed construction and operation of a Recycates Bulking Waste Transfer Station.
Land off Welshcroft Close, Portland Industrial Estate, Kirkby-in-Ashfield, Nottinghamshire.
Planning Application No. 4/v/2015/0711

This map is reproduced from Ordnance Survey material with the permission of Ordnance Survey on behalf of the
Controller of Her Majesty's Stationery Office © Crown copyright.
Unauthorised reproduction infringes Crown copyright and may lead to prosecution or civil proceedings. (1000019713) (2016)



Not to Scale
Produced by: JW
Date: APRIL 2016

PLAN 3