

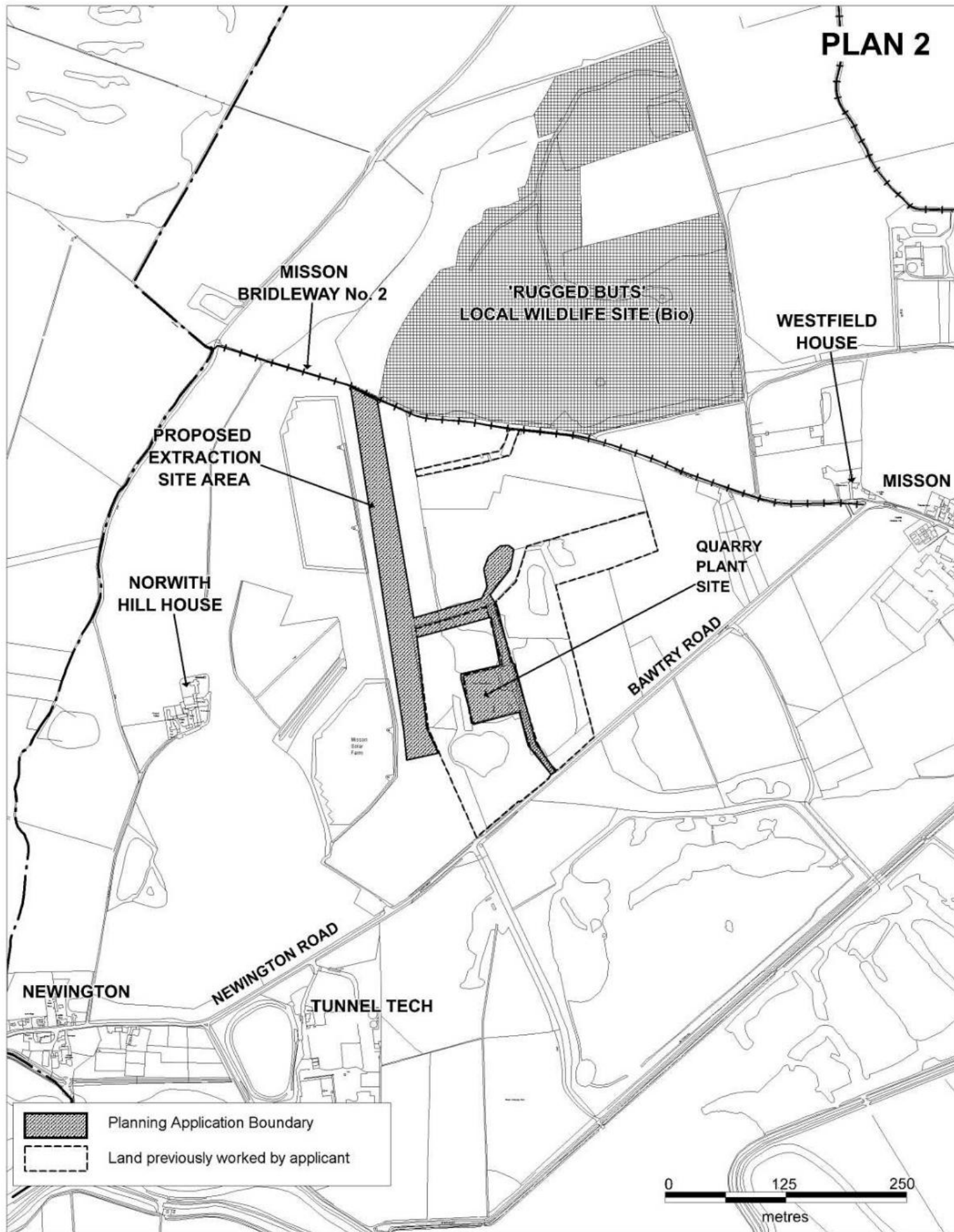
**Nottinghamshire
County Council**

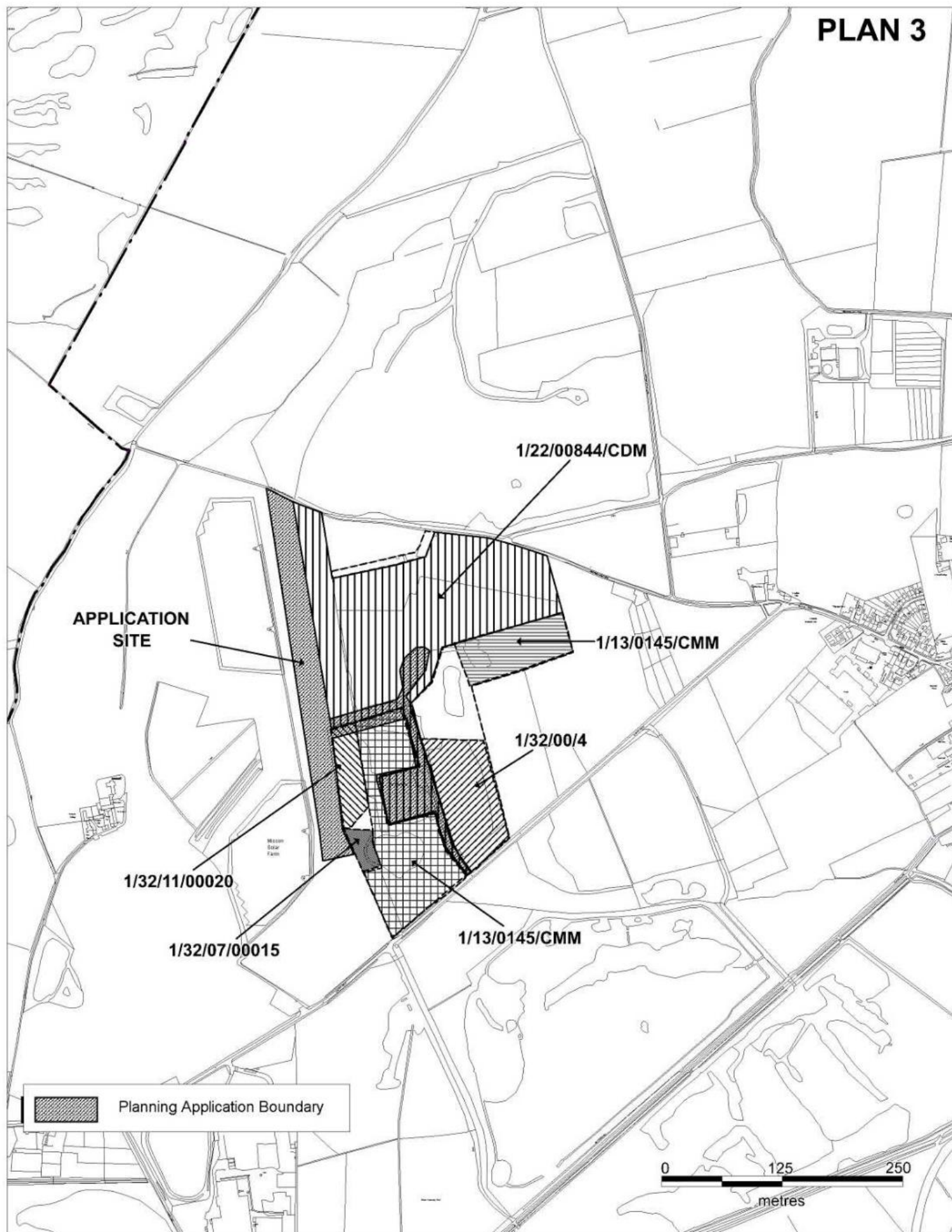
Proposed western extension to existing Misson Grey Sand Quarry
incorporating modifications to previously approved restoration schemes
Misson Sand and Gravel, Bawtry Road, Misson, Nottinghamshire.
Application No.'s 1/15/01574/CDM and 1/32/11/00020

This map is reproduced from Ordnance Survey material with the permission of Ordnance Survey on behalf of the
Controller of Her Majesty's Stationery Office © Crown copyright.
Unauthorised reproduction infringes Crown copyright and may lead to prosecution or civil proceedings. (1000019713) (2023)



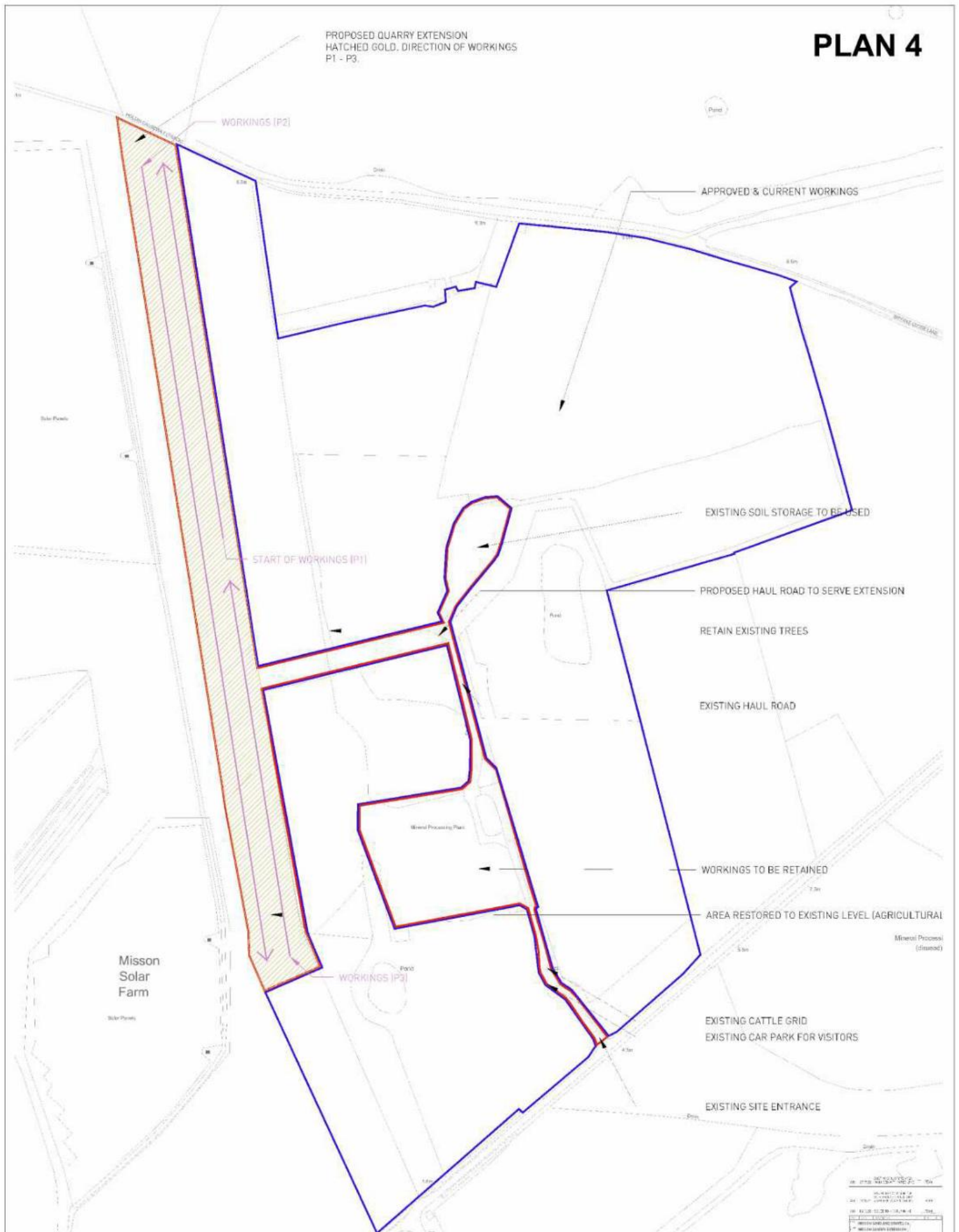
Scale 1:15,000
Produced by: JW
Date: APRIL 2023





PROPOSED QUARRY EXTENSION
HATCHED GOLD. DIRECTION OF WORKINGS
P1 - P3.

PLAN 4



○

