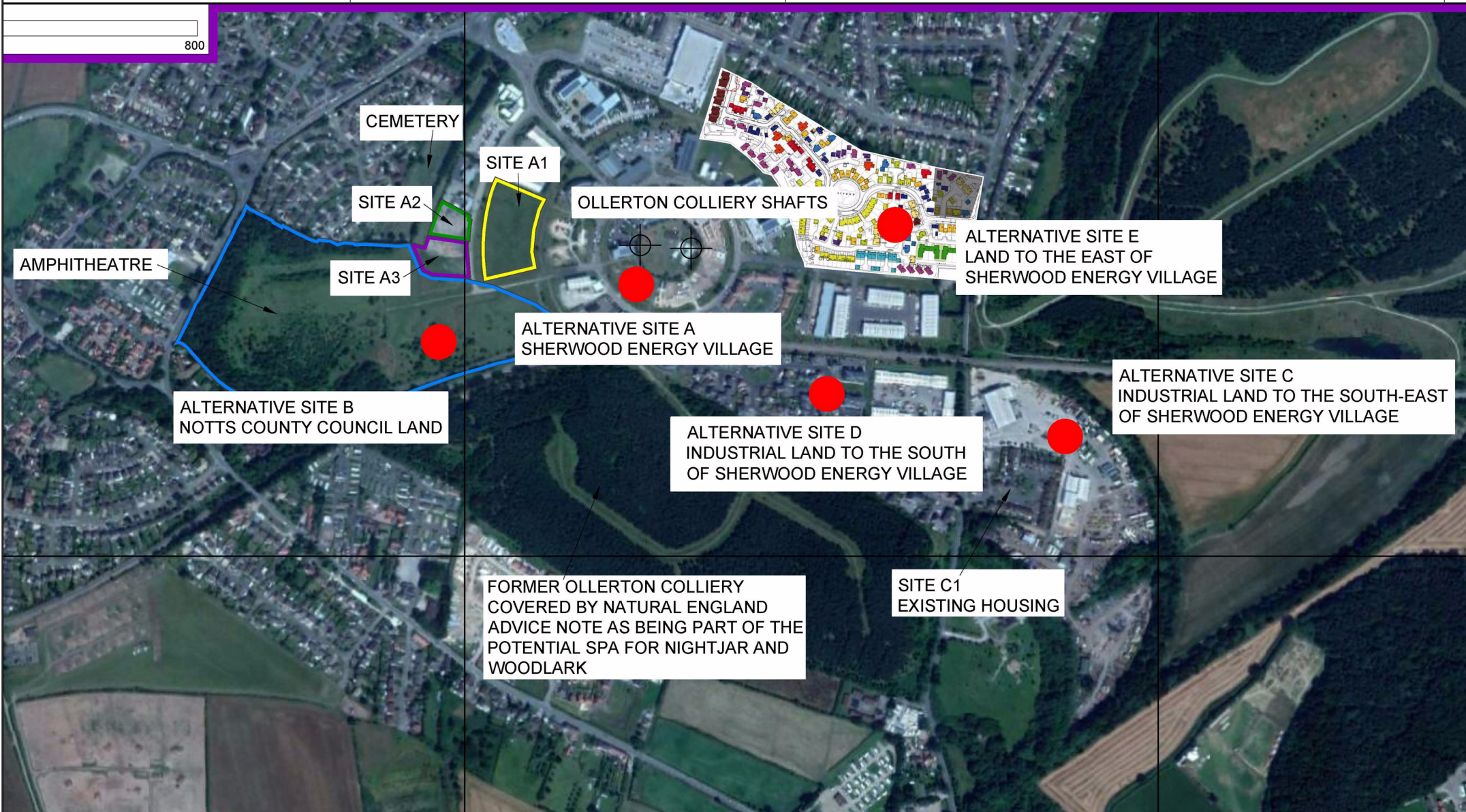


800



# POTENTIAL ALTERNATIVE SITES



**Nottinghamshire  
County Council**

Drill and test a borehole including flaring, erect containerised units and associated plant and equipment,  
new access track, extract mine gas, generate electricity and ancillary operations  
Land at Rufford Hills Farm, Off Rufford Lane, Rufford  
Planning Application No 3/18/00756/CMA

This map is reproduced from Ordnance Survey material with the permission of Ordnance Survey on behalf of the  
Controller of Her Majesty's Stationery Office © Crown copyright.  
Unauthorised reproduction infringes Crown copyright and may lead to prosecution or civil proceedings. (1000019713) (2019)

Not to Scale  
Produced by: JW  
Date: APRIL 2019



**PLAN 7**