

**11 January 2016****Agenda Item: 8****REPORT OF THE SERVICE DIRECTOR, STRATEGIC COMMISSIONING,  
ACCESS AND SAFEGUARDING****TRANSFORMING CARE UPDATE****Purpose of the Report**

1. To inform Committee members of the progress of the Nottingham and Nottinghamshire Fast Track Programme. The programme aims to reduce the reliance on in-patient facilities for people with a learning disability or autism with behaviour that challenges and to provide alternative services within the community. It is an extension of the Transforming Care programme initiated by the Winterbourne case which concentrated on moving existing people out of long stay hospitals.

**Information and Advice****Background**

2. Following the publication of the Department of Health's report '*Transforming Care: A national response to Winterbourne View Hospital*' in December 2012, and subsequent reports including the *Bubb Report* in November 2014, and '*Transforming Care for People with Learning Disabilities – Next Steps*' in January 2015, a significant amount of work has been undertaken to make improvements in the care and services available for people with learning disabilities and/or autism spectrum disorders. However, nationally there is a view that more needs to be done. Simon Stevens, Chief Executive of NHS England, said on 3 June 2015: "We have not finished the job. We need a closure programme for long stay institutions, with more power in the hands of families."
3. NHS England, the Local Government Association and Association of Directors of Adult Social Services announced on 12 June 2015 that five 'fast track' areas were being established that would be the forerunners of transformation of services for people with a learning disability and/or autism and challenging behaviours, or a mental health condition. The fast track areas were asked to submit a transformation plan by 7 September 2015 which described how they would strengthen community services, reduce reliance on in-patient beds (non-secure, low and medium secure) and close some in-patient facilities.
4. The areas were chosen based on the numbers of in-patient beds and it was felt that they had the potential to bring together a large number of local authority and Clinical Commissioning Group (CCG) commissioners and specialised commissioning, each with

different challenges, to test different approaches and effect the biggest change. The areas chosen were as follows:

- Arden, Herefordshire and Worcestershire
  - Cumbria and the North East
  - Greater Manchester and Lancashire
  - Hertfordshire
  - Nottinghamshire.
5. As part of transformation plans, fast track areas were invited to bid for a share of a £10 million transformation fund to help accelerate service redesign and shape the new national approach to transforming learning disability services and services for those with autism spectrum disorders more widely across England to embed more sustainable change. Obtaining a share of the national monies was conditional on CCGs match funding the contribution.
6. A national service model for those with learning disabilities and/or autism spectrum disorders was published at the end of October 2015 which includes national planning assumptions for re-designing services. Following this all areas of the country will be expected to undertake transformation within learning disability services in line with the new service model. It is understood that this will be reflected in the planning guidance for 2016 / 2017.

### **Process and Arrangements for the Nottinghamshire Fast Track Site Plan Submission**

7. Upon notification in mid-June 2015 that Nottinghamshire had been identified as a fast track site, Sally Seeley (NHS Nottingham City CCG) was nominated and agreed as the Senior Responsible Office (SRO) for the project with Caroline Baria (Nottinghamshire County Council) as the Deputy SRO. A Transforming Care Board and a Working Group were established to enable organisations to work together and create a plan to transform services for people with a learning disability and/or autism who also have, or are at risk of developing, a mental health condition or behaviours described as challenging who reside in Nottinghamshire. This includes people of all ages and those with autism (including Asperger's syndrome) who do not also have a learning disability, as well as those people with a learning disability and/or autism whose behaviour can lead to contact with the criminal justice system.
8. The Nottinghamshire plan was submitted on 7 September, detailing the ambitions of the two local authorities and the seven CCGs and how the partners intend to work with the local population, key stakeholders and the proposed governance arrangements and bidding for £1.68 million from the national monies.
9. On 5 October, NHS England provided feedback to the Nottinghamshire partners on the plan and at the same time it was confirmed that £1.21 million had been allocated from the available transformation fund.

### **Nottinghamshire Transformation Plan**

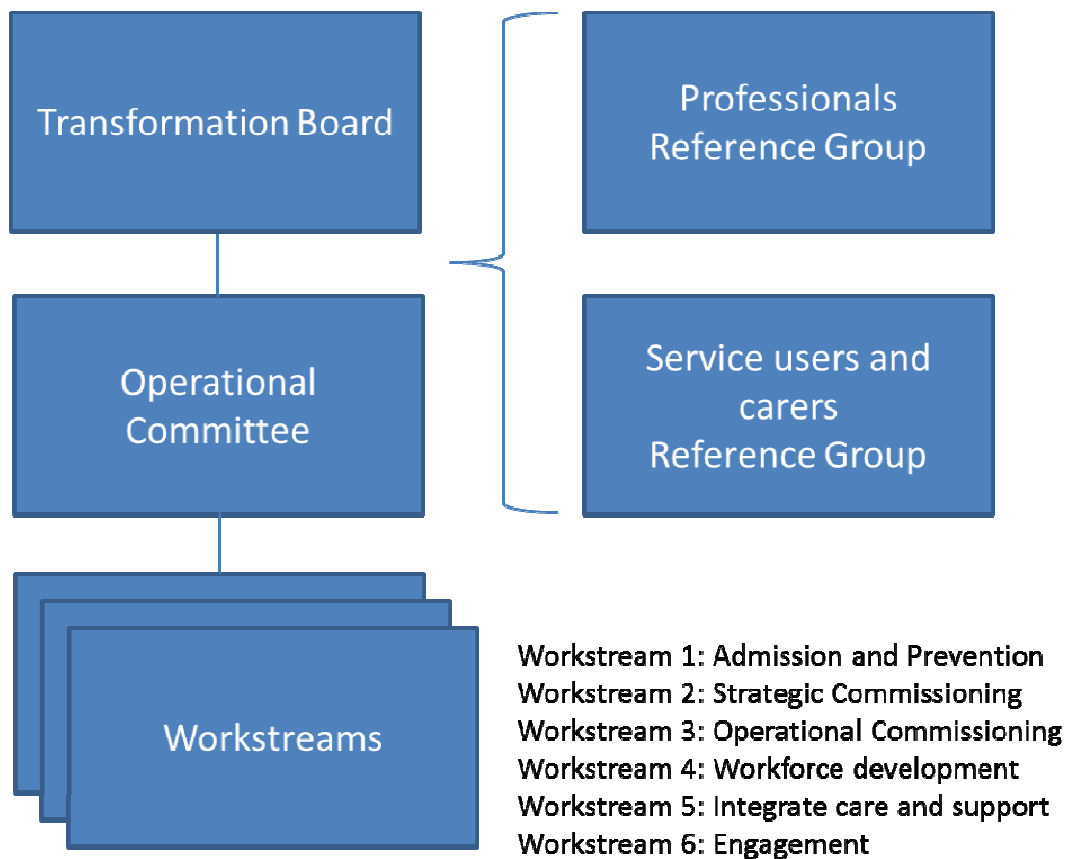
10. The plan aims to transform care and support for individuals with a learning disability and/or autism who also have, or are at risk of developing, a mental health condition or behaviours described as challenging so that their care is focused on keeping them

healthy, well and supported in the community. Achieving this will minimise the need for inpatient care with the objective of reducing the number of beds in Nottinghamshire over a period of time as the redesign of services and implementation of more community based provision takes effect, for example, better provision around addressing crises as they occur including accommodation options.

11. The plan provides detail on the following:
  - the Nottinghamshire area
  - the services currently commissioned and provided across our area
  - our vision for how future services will be commissioned and provided
  - what we need to change to achieve our vision and how we intend to do this.
12. The plan recognises that to successfully deliver it, significant changes in the way that services are currently commissioned and provided will be required and that this will need the full support of adults with a learning disability and/or autism spectrum disorder, their families, friends and carers as well as from providers of services and the health and social care workforce. The partners have committed to working together to make these changes happen through the design and provision of effective social and health care services. The published version of the plan is available as a background paper.
13. The local authorities and the CCGs will also work through recommendations from Future in Mind, the national plan for improving the mental health and wellbeing of children and young people. The partners have developed local Future in Mind transformation plans for Nottingham and Nottinghamshire and will ensure alignment with this plan.

### **Process and Arrangements for the Nottinghamshire Fast Track Site Plan Consultation and Implementation**

14. Now that feedback has been received and NHS England has provided notification of the financial allocation, the partners are moving into the implementation phase of the project. One of the first things that will be undertaken will be a formal public consultation about the proposed new service model as due to the timescales required nationally it was not possible for this to be completed prior to the plan being submitted in September. Further details of this will be circulated in the near future. This paper is also being submitted to all CCG Governing Bodies, relevant local authority Committees and will be presented to the Joint Overview and Scrutiny Committee.
15. The Transformation Board is continuing to meet and a robust governance structure has been established which will oversee process and delivery of the plan which is shown overleaf:



## Workstreams

16. Details of each of the workstreams are as follows:

- Admission and prevention - design, develop and implement the pathways of care and support to deliver joined up and integrated care and support around the Person-centred Plan and a supporting single overview plan across health and social care.
- Strategic Commissioning - use the case for change to decide what joint commissioning arrangements need to be in place to deliver the good quality of care and support that is required to be delivered from the new model of care for those with a learning disability and/or autism.
- Operational Commissioning - oversee all the actions required at various stages of the commissioning cycle to adapt and deliver the services required for the model of care, and in line with the joint commissioning strategy developed by the Strategic Commissioning work stream.
- Workforce development - implement a workforce development programme to ensure that all relevant staff within health, social care and provider organisations as well as families and carers, have the skills and knowledge to work effectively with this client group to deliver the model of care.
- Integrate Care and Support systems – ensure mechanisms to develop pooled and aligned budgets with specific reference to the integration of personal health budgets and social care personal budgets.
- Engagement - will deliver the extensive engagement with individuals, families and carers as well as the wider public and providers of care and support, both NHS and independent, and also clinical engagement. This engagement will be based on an engagement strategy, and plans will be developed for public, provider and clinical engagement based on this strategy.

## **Other Options Considered**

17. This is a national programme and all health and social care systems are required to develop local plans to reduce the numbers of people admitted into long stay hospital provision and to develop appropriate services in the community.

## **Reason/s for Recommendation/s**

18. The report seeks to ensure that Members are informed of the work currently being undertaken to develop and implement a plan to transform services for people with a learning disability and/or autism who also have, or are at risk of developing, a mental health condition or behaviours described as challenging who reside in Nottinghamshire.

## **Statutory and Policy Implications**

19. This report has been compiled after consideration of implications in respect of crime and disorder, finance, human resources, human rights, the public sector equality duty, safeguarding of children and vulnerable adults, service users, sustainability and the environment and ways of working and where such implications are material they are described below. Appropriate consultation has been undertaken and advice sought on these issues as required.

## **Financial implications**

20. The CCGs are required to make match funding against the amount awarded by the Department of Health. The Nottinghamshire plan also assumes that current funding invested in hospital care for this user group will be recycled into community support, including money currently invested by local CCGs and also specialised commissioning, a section of NHS England who commission secure hospital placements.
21. "Building the Right Support" recently published by LGA, ADASS and NHS England, reinforces the idea of pooled or aligned budgets around this service user group and introduces the concept of "dowries" which will be paid to local authorities for anyone who has been in hospital for more than five years.
22. Any Adult Social Care and Health (ASCH) spend to date for people leaving hospital and going into the community and the additional specific staff resource has come from a CCG funded 'Winterbourne pot'. This was £2.7million and this funding has now run out. Therefore the cost is being incurred during this year which will be £1.2m for 2014/15. Discussions are being held with the CCGs around continuation of the funding in the short term whilst savings are released from the closure of long stay hospital provision. The development of a pooled budget for this provision is also being explored.

## **RECOMMENDATION/S**

- 1) That Committee notes the progress of the Nottingham and Nottinghamshire Fast Track Programme and the plan for transformation of services for individuals with a learning disability and/or autism spectrum disorder.

**Caroline Baria**

**Service Director, Strategic Commissioning, Access and Safeguarding**

**For any enquiries about this report please contact:**

Cath Cameron-Jones  
Commissioning Manager, ASCH&PP  
T: 0115 9773135  
E: cath.cameron-jones@nottsc.gov.uk

**Constitutional Comments (SMG 19/11/15)**

23. The proposals in this report fall within the remit of this Committee.

**Financial Comments (KAS 19/11/15)**

24. The financial implications are contained within paragraphs 19-21 of the report.

**Background Papers and Published Documents**

Except for previously published documents, which will be available elsewhere, the documents listed here will be available for inspection in accordance with Section 100D of the Local Government Act 1972.

Transforming Care for People with Learning Disabilities in Nottinghamshire – September 2015

**Electoral Division(s) and Member(s) Affected**

All.

ASCH357