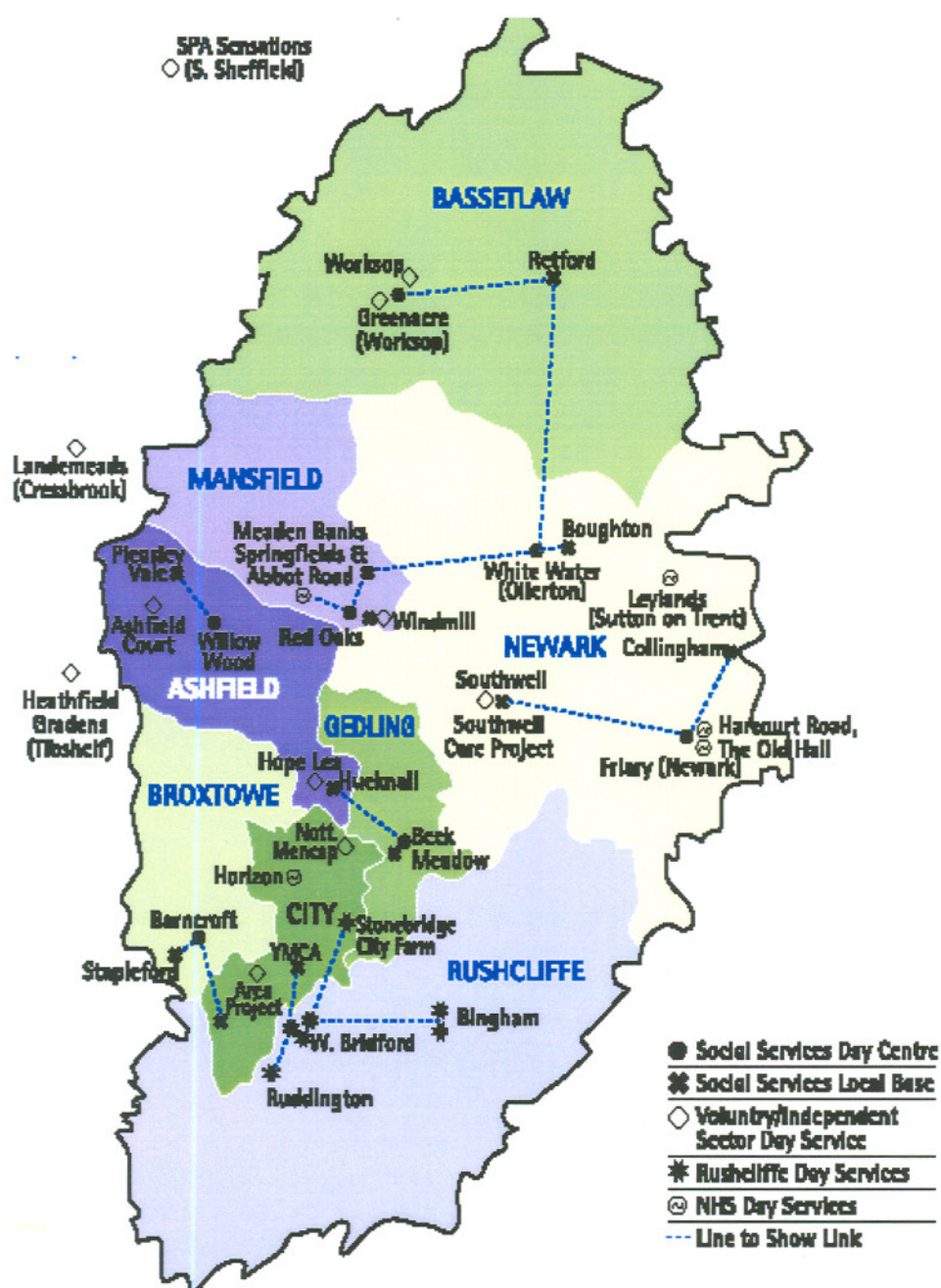


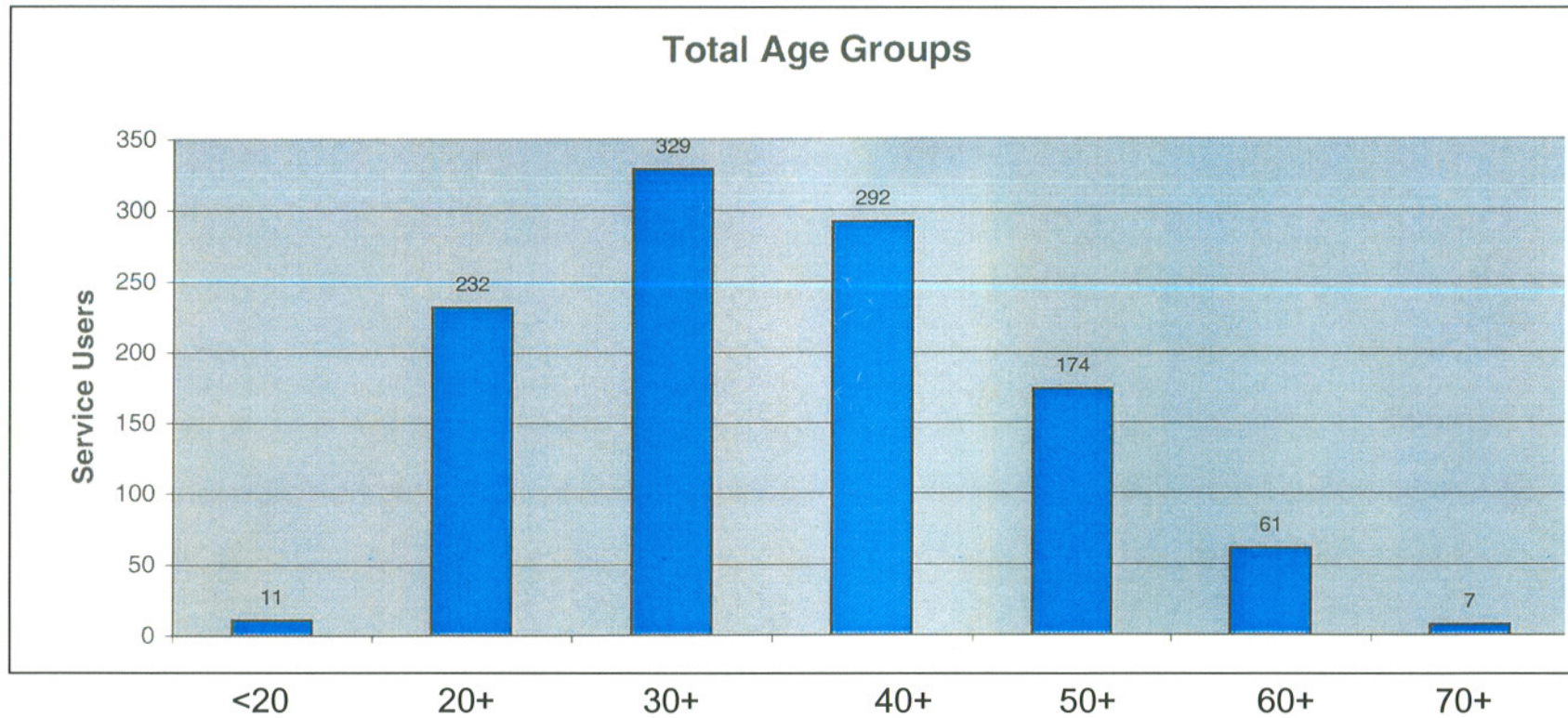
Map of Day Services in Nottinghamshire County Council

(and other services used by people with learning disabilities)0



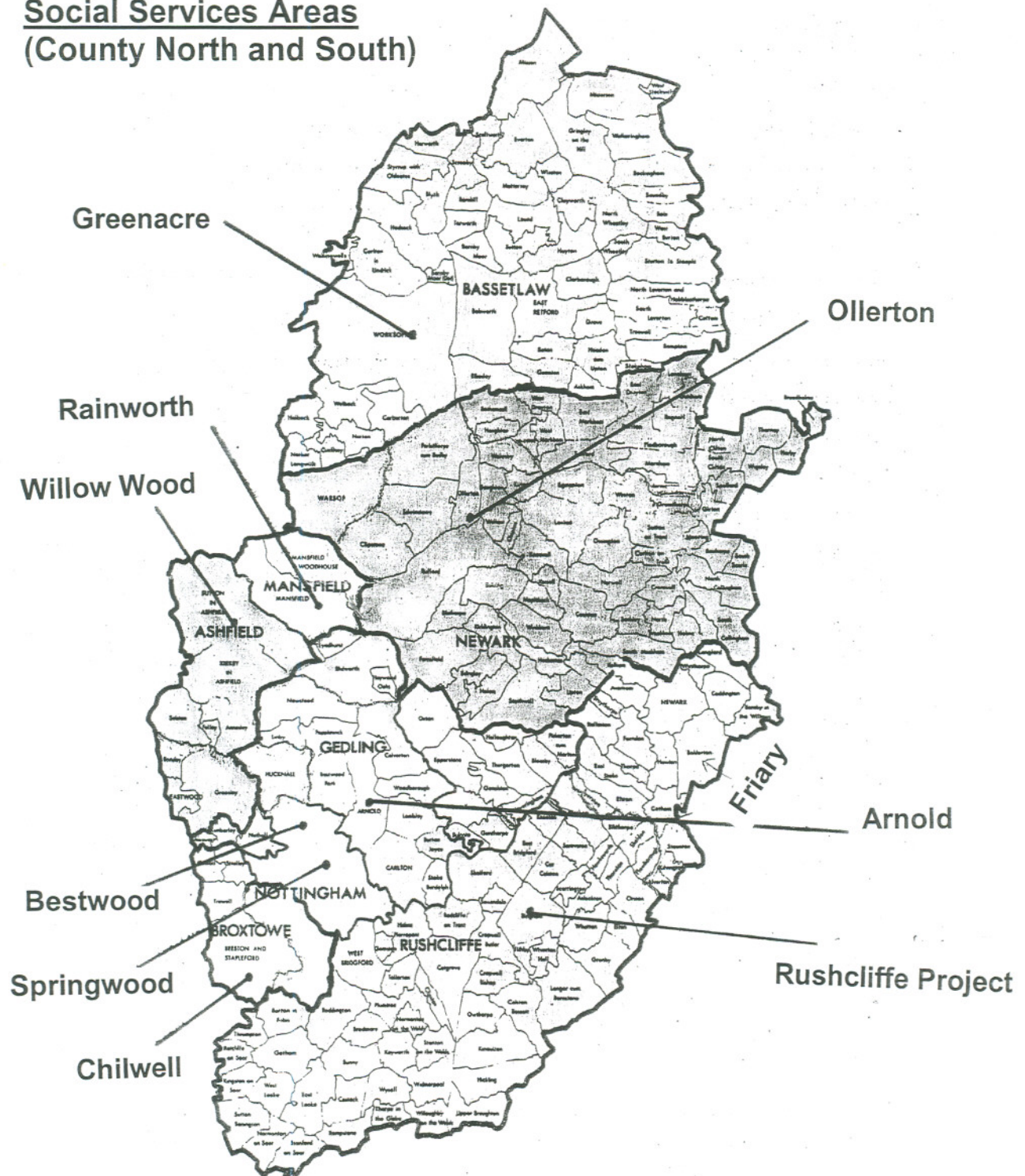
This map does not include the Flexible Day Services across Nottingham City and South Nottinghamshire (Broxtowe, Gedling, Rushcliffe and Hucknall)

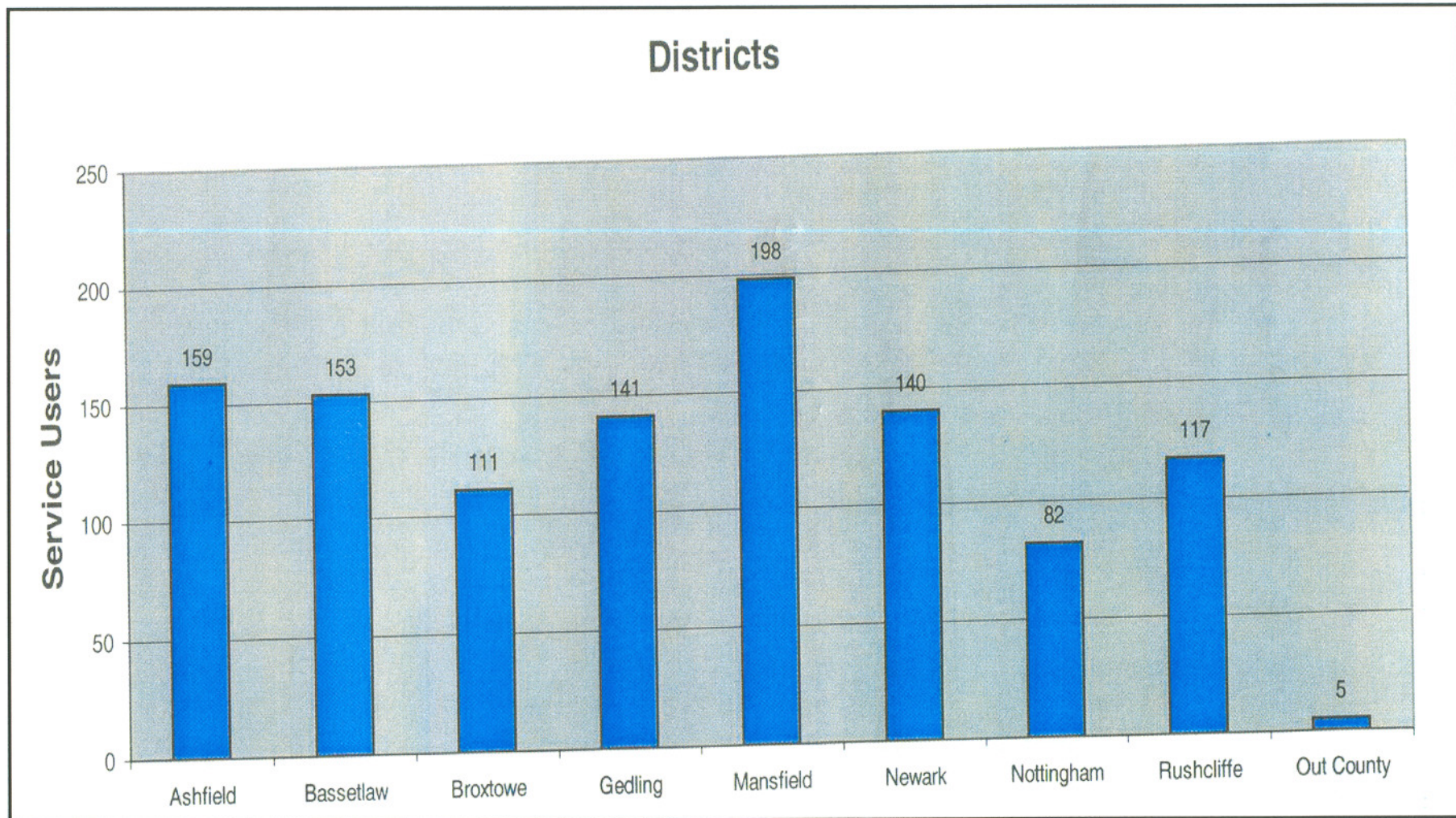
Paper 2b



<20	11
20 +	232
30 +	329
40 +	292
50 +	174
60 +	61
70 +	7

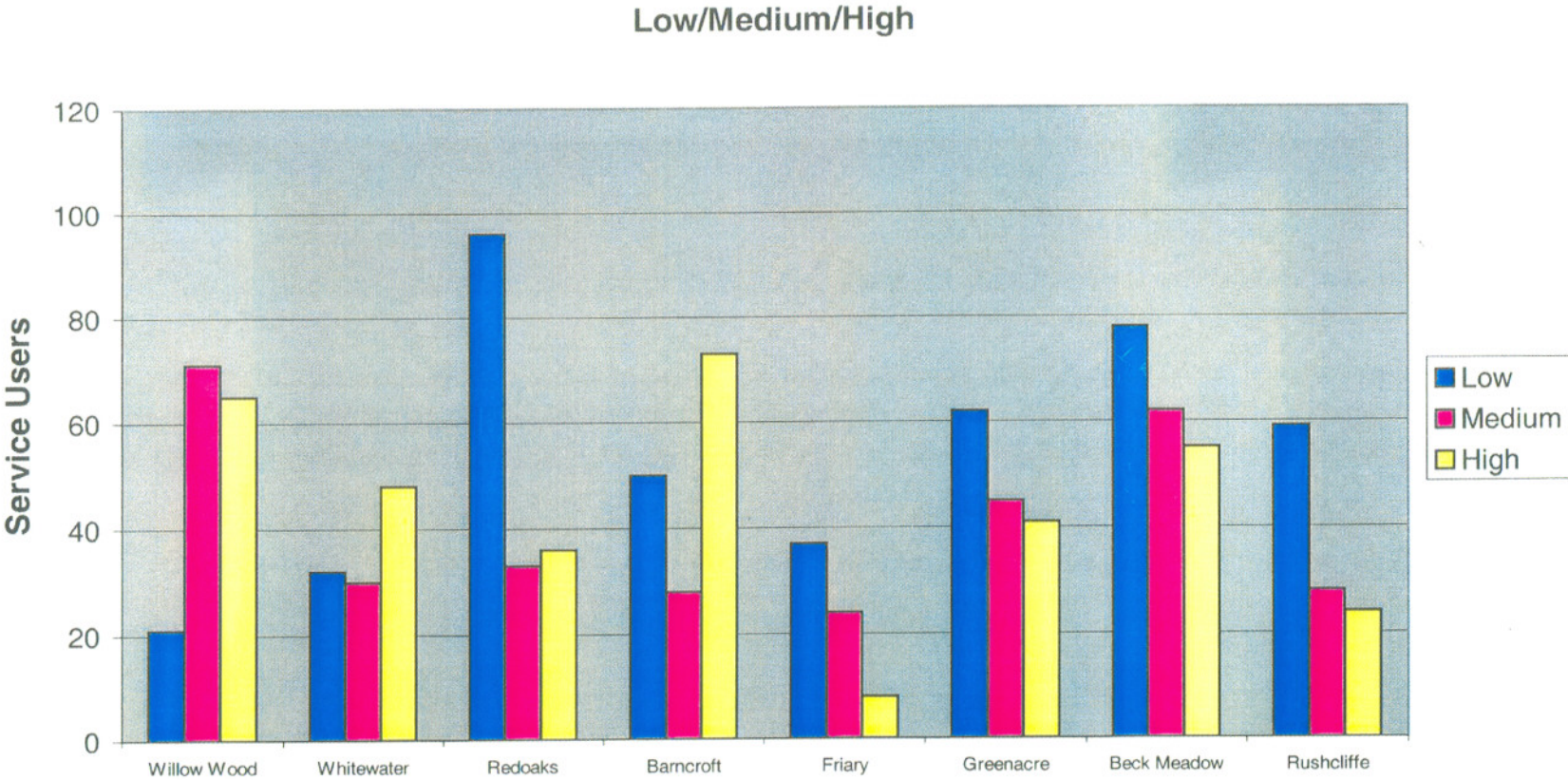
Social Services Areas
(County North and South)





Paper 5 a

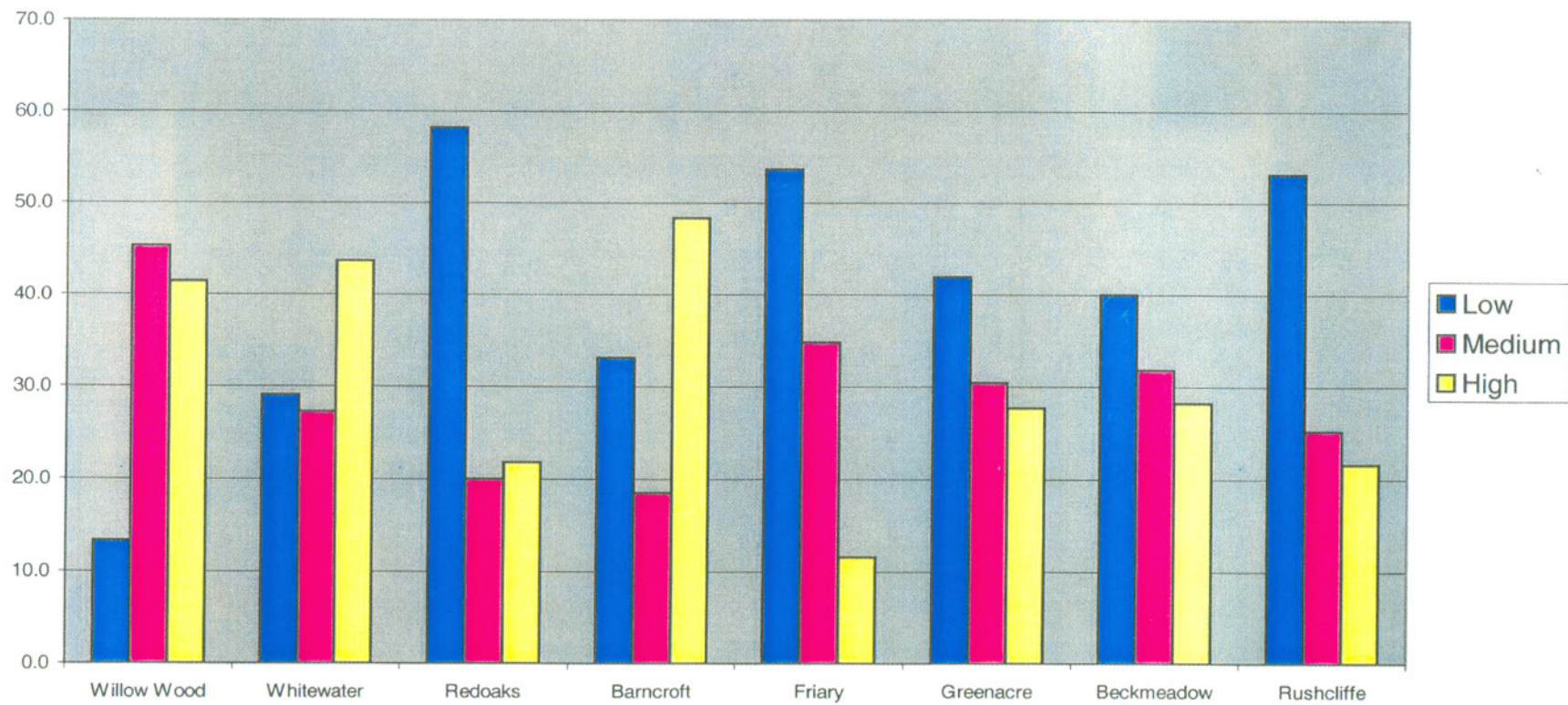
	Willow Wood	Whitewater	Redoaks	Barncroft	Friary	Greenacre	Beck Meadow	Rushcliffe		
Low	21	32	96	50	37	62	78	59	Low	435
Medium	71	30	33	28	24	45	62	28	Medium	321
High	65	48	36	73	8	41	55	24	High	350



Paper 5b

	Willow Wood	Whitewater	Redoaks	Barncroft	Friary	Greenacre	Beckmeadow	Rushcliffe
Low	13.4	29.1	58.2	33.1	53.6	41.9	40.0	53.2
Medium	45.2	27.3	20.0	18.5	34.8	30.4	31.8	25.2
High	41.4	43.6	21.8	48.3	11.6	27.7	28.2	21.6

As a Percentage



Cost of Transport into Day Centre
for people with a learning disability (actual) 2002/03

Centre	Hire of Transport	In house transport	Mini buses	totals
Willow Wood	89828	64733	11377	165938
Greenacre	105921	64733	11377	182031
Red Oaks	81830	32367	5688	119885
Friary(Whitfield St)	76	32367	11377	43820
Whitewater	86695	64733	5688	157316
Barncroft	59165	84733	5688	129588
Beckmeadow	86729	64733	5688	157150
Rushcliffe Project	158466	0	0	158466
Total	668910	366390	56883	1114192

The above costings represent the overall cost of transport into Day Care and operation of mini buses at each centre. Only the hire of transport costs would be easy to re-cycle as these contracts can be terminated with 2 months notice. In-house transport and mini-buses is some what different as vehicles are leased for a set period and Driver Attendants are employed on permanent contracts.

(comm.-select) scss149-app6

Traffic Light Model - Flowchart

