

Grant Aid Sub-Committee

Tuesday, 27 January 2015 at 14:00

County Hall, County Hall, West Bridgford, Nottingham, NG2 7QP

AGENDA

- | | | |
|---|--|---------|
| 1 | Minutes of the last meeting held on 8 September 2014 | 3 - 6 |
| 2 | Apologies for Absence | |
| 3 | Declarations of Interests by Members and Officers:- (see note below)
(a) Disclosable Pecuniary Interests
(b) Private Interests (pecuniary and non-pecuniary) | |
| 4 | Provision of Online funding portal for Community Groups in Nottinghamshire | 7 - 16 |
| 5 | Arts Grant Aid 2014-15 | 17 - 26 |
| 6 | Nottingham Credit Union | 27 - 32 |
| 7 | Grant Aid Annual Review 2013-14 | 33 - 54 |
| 8 | Work Programme Report | 55 - 58 |

Notes

- (1) Councillors are advised to contact their Research Officer for details of any Group Meetings which are planned for this meeting.
- (2) Members of the public wishing to inspect "Background Papers" referred to in

the reports on the agenda or Schedule 12A of the Local Government Act should contact:-

Customer Services Centre 0300 500 80 80

- (3) Persons making a declaration of interest should have regard to the Code of Conduct and the Council's Procedure Rules. Those declaring must indicate the nature of their interest and the reasons for the declaration.

Councillors or Officers requiring clarification on whether to make a declaration of interest are invited to contact Dawn Lawrence (Tel. 0115 977 3201) or a colleague in Democratic Services prior to the meeting.

- (4) Councillors are reminded that Committee and Sub-Committee papers, with the exception of those which contain Exempt or Confidential Information, may be recycled.
- (5) This agenda and its associated reports are available to view online via an online calendar - <http://www.nottinghamshire.gov.uk/dms/Meetings.aspx>

Meeting	GRANT AID SUB-COMMITTEE
Date	Monday 8 September 2014 (commencing at 2.00 pm)

Membership

Persons absent are marked with an 'A'

COUNCILLORS

Joyce Bosnjak (Chairman)
Martin Suthers (Vice-Chairman)

John Allin
John Cottee

David Kirkham
Michael Payne

OFFICERS IN ATTENDANCE

Sally Gill	Group Manager Planning
Cathy Harvey	Team Manager, Community and Voluntary Sector
Dawn Lawrence	Assistant Democratic Service Officer
Paul Roberts	Community & Voluntary Sector Liaison Officer
Chris Rolle	Sports Development Manger
Kevin Tennant	Strategic Arts Officer Targeted Participation & Volunteering

MINUTES OF THE LAST MEETING HELD ON 21 JULY 2014**RESOLVED 2014/019**

That the minutes of the last meeting held on 21 July 2014 been circulated were confirmed and signed by the Chairman.

APOLOGIES FOR ABSENCE

An apology for absence was received by Councillor Keith Longdon, he was on other County Council business.

DECLARATIONS OF INTEREST

There were no declarations of interest.

UPDATE ON THE MERGER OF GEDLING, NEWARK & SHERWOOD & RUSHCLIFFE CVS'S

Caroline Perry from Rushcliffe CVS and Andrew Wilson and Una Key from Newark and Sherwood CVS'S gave an oral presentation on the merger of Gedling, Newark and Sherwood and Rushcliffe Community Voluntary Services. Members were updated on the progress of the merger.

RESOLVED 2014/20

Members thanked them for their presentation and update.

SPORTS GRANT AID 2014/15

Chris Rolle presented a report to advise members of the back ground and process for the allocation of grant aid to sports and recommended awards for 2014/15.

RESOLVED 2014/21

Members noted the report and approved the following:-

- 1) The list of CSF projects highlighted in Appendix 1 to the report.
- 2) The list of Rising Stars applications highlighted for funding in Appendix 2 of the report.

ARTS GRANT AID 2014/15

Kevin Tennant gave a report advising members of the applications to the Nottinghamshire Arts Fund (NAF) seeking approval from members of funding for a portfolio of grant awards. Members were asked to approve the opening of a second round of applications in line with the current process.

RESOVLED 2014/22

- 1) Members approved the portfolio of grants to applicants included in the report.
- 2) Members approved the second round of funding be opened later in the financial year allocating any remaining funds.

PRIORITIES FOR THE 2015-18 NOTTINGHAMSHIRE COUNTY COUNCIL GRANT AID PROGRAMME

Sally Gill presented a report seeking members agreement of the main priorities for the 2015-18 Nottinghamshire County Council Grant Aid Programme.

RESOLVED 2014/23

Members approved the following:-

- 1) That the Grant Priorities detailed in Appendix 1 of the report be approved.
- 2) The approval of three launch events across the County to promote the programme and give the Community & Voluntary Sector the opportunity to ask questions.
- 3) That 5% of the agreed budget be ring fenced for an innovation fund application round in each of the three years from 2015 to 2018.
- 4) That group/consortium applications be encouraged to improve efficiency on administration and transactions.

WORK PROGRAMME

Members considered the Committees work programme for 2014/15

RESOLVED 2014/18

That the 2nd round of Arts Funding be added to the next committee meeting.

The meeting closed at 2.50 pm

CHAIRMAN

27 January 2015
Agenda Item: 4

REPORT OF THE CORPORATE DIRECTOR POLICY, PLANNING AND CORPORATE PERFORMANCE

Provision of an on-line funding portal for Nottinghamshire County Council

Purpose of the Report

1. To consider the provision of a customised funding portal for Nottinghamshire Voluntary and Community Organisations.

Information and Advice

2. The recent application round for Nottinghamshire County Council Grant Aid generated a significant amount of interest, presentations were delivered to over 300 organisations, applications were received from 179 and requests for over £4million. Demand for funding clearly outstrips the Councils ability to support all requests.
3. The Community & Voluntary Sector Team, Economic Development Team and Arts and Sports Team at the Council all have access to a externally hosted product called Grantfinder which is owned and managed by a company called **Idox**.
4. Grantfinder allows registered users to access a database of over 8000 funding opportunities updated in real time and searches can be carried out on behalf of the VCS by our officers. However, resources to perform this kind of support are limited and an option to allow Communities access the same searches and a range of other funding support tools is available through another product delivered by Idox called **“Open 4 Community”**

Background

5. **Open 4 Community** is a portal that provides comprehensive coverage of all available funding opportunities, including European Union, national Government programmes, regional schemes and local initiatives, and is kept fully up to date.

6. Information is continually updated and checked for accuracy by a team of specialist researchers. In excess of 20 full time staff are working on the funding content at all times. The portal can be customised with County Council branding and is accessed by a link from our website.
7. It also includes a number of proactive features that offer users additional value. Automatic email alerts can be set up so they are first to know when relevant new or updated funds are added, as well as signing up to weekly newsletters packed with the latest funding announcements.
8. Users access the Open 4 Funding portals via an email-based registration process, giving the council really useful intelligence on who is using the service. Monthly statistical breakdowns are also provided to help evaluate the portal's impact and help demonstrate its value for money. All content is subject to a strict editorial process that ensures the information provided is consistent, accurate and relevant.
9. Research is conducted at two levels:-
 - a. **Reactive** – research teams keep in touch with all relevant breaking news feeds, funders' websites, press releases and latest policy documents. On a weekly basis over 2,000 information sources are tracked. In addition, they have developed an in-house tool, which enables them to track changes to thousands of source websites on a nightly basis.
 - b. **Proactive** – using various update cycles to ensure their data is up to date, they keep regular contact with a whole host of funding administrators and policy managers, councils, charitable trust funds. Excellent contacts ensure inside knowledge on new funding opportunities, can be immediately added to the system and disseminated users.
10. The portal provides:-
 - Complete and concise fund details, including criteria, who to contact and links to application forms.
 - Automatic e-mail alerts
 - Weekly e-newsletters
 - Bespoke reports for funding search results and ability for the user to save searches
 - Full search or browse options depending of user preference
 - Information updated in real time ensuring the latest information is available
 - An enhanced support service for community groups without having to commit additional staff resources.
 - 24/7 access to funding information

11. Open 4 Community is hosted by 50+ Local Authorities throughout the UK. Testimonials from some service users are detailed at appendix 1.

12. The following links and appendix 2 show how the portal and opening web-page can be customised to show branding of the local authority.

- Hull City Council - [Hull 4 Funding | Open 4 Community](#)
- Kent County Council - [Kent 4 Community | Open 4 Community](#)

Financial Implications

13. Should members wish further development of this provision the likely costs would be:

- | | | |
|-------------------------------------|--------|---------|
| • Initial one-off portal build cost | | £2000 |
| • Subscription costs | 1 year | £4,850 |
| | 2 year | £9,215 |
| | 3 year | £13,095 |

Any costs incurred would be met from the Grant Aid Budget

Other Options Considered

14. This service if developed would be an investment to support the Voluntary and Community Sector of Nottinghamshire. It would be a new development by the Council and a return on investment is anticipated – a survey following the first six months of use in Hull City saw an additional £225,000 in funding being secured by the voluntary sector.

Reason/s for Recommendation/s

15. To help the Voluntary & Community Sector maximise funding for the benefits of the people of the County.

Statutory and Policy Implications

16. This report has been compiled after consideration of implications in respect of finance, equal opportunities, human resources, crime and disorder, human rights, the safeguarding of children, sustainability and the environment and those using the service and where such implications are material they are described below. Appropriate consultation has been undertaken and advice sought on these issues as required.

RECOMMENDATIONS

17. Following a live demonstration, members are asked to:

a). Consider and assess the potential value of developing a bespoke service for the Voluntary & Community Sector of Nottinghamshire.

Providing members are satisfied that such a product would help the Council & VCS;

b). To commission officers from the Community & Voluntary Sector Team & the Digital Inclusion Team from Corporate Communications to undertake further work to ensure any product is designed and implemented in line with the Council's Digital First approach.

Jayne Francis-Ward

CORPORATE DIRECTOR POLICY, PLANNING AND CORPORATE SERVICES

For any enquiries about this report please contact:

Cathy Harvey

Team Manager, Community and Voluntary Sector Team

0115 97 73415

Constitutional Comments (LM 6/1/15)

The recommendations within the report fall within the terms of reference of the Grant Aid Sub Committee.

Financial Comments (SEM 15/01/15)

The financial implications are set out in the report.

Background Papers and Published Documents

Except for previously published documents, which will be available elsewhere, the documents listed here will be available for inspection in accordance with Section 100D of the Local Government Act 1972.

Electoral Division(s) and Member(s) Affected

ALL

Appendix 1.

"In 2011 we purchased Open 4 Community to enable residents and organisations to do their own funding searches and allow us to focus our time on more in-depth support and bid writing. This is a popular service amongst the local voluntary sector as responses to our 2012 VCS Survey demonstrate – over 30% of groups say they make use of the website. We have found this and the GRANTfinder service to be effective and easy to use and would recommend them to other local authorities."

Stephen Frost, Principal Community Investment Officer, LB of Hounslow

"Open 4 Community is an invaluable resource for us here at Southwark Council. We have been using it since 2008 to advertise all our funding opportunities, both grants and contracts.

Details of funding opportunities both nationally and locally are held all in one place and can be easily searched. Our funded groups know it as the place to go to for all council funding opportunities and beyond."

Katherine Pitt, Commissioning Officer, Southwark Council

"Open 4 Community enables us to extend our offer of support to the local voluntary and community sector in Leicester and Leicestershire. It enables community groups to access comprehensive funding information via our own website at a time and location to suit them. It is also a valuable tool in identifying support and advice available to develop their services."

Simon Jenner, Group Support Manager, Voluntary Action Leicestershire

"Open 4 Community has enabled BVSC to offer comprehensive and easily accessible funding advice and opportunities to the sizeable and diverse voluntary and community sector in Birmingham. At a time of economic uncertainty this has been an incredibly valuable tool.

Over the past 12 months we have seen a significant increase in the number of organisations exploring funding opportunities through Open 4 Community.

The monthly data reports have proved incredibly useful and have been utilised to support our reporting against various contracts."

Ian Angus, Business and Enterprise Programmes Manager, BVSC

Appendix 2.

Screen shots from Hull City Council & Kent County Council

Hull 4 Funding - The community funding support website for the Kingston upon Hull area

Help and advice

Hull City Council


Funding search

Home Search for funding Browse funding Local support News ▾ Events


Hull 4 Funding

Looking for funding? You've come to the right place.


Please click on the buttons below to view more information about each category.




Search for funding



Browse funding



View local support



View local success stories

Funding Success?
Click here to let us know

National community news

23/12/2014
Irish Youth Foundation UK Open to Applications

23/12/2014
New Pilot Project Launched by European Commission to Identify Sports Betting Risks

23/12/2014
WREN Launches New Community Fund for England and Wales

[View more national news](#)

Kent 4 Community - The community funding support website for the Kent area

Help and advice

Kent County Council

Funding search


Funding support portals: [BUSINESS](#) [COMMUNITY](#)

Home Search for funding Browse funding Local support News ▾ Events


Kent 4 Community

Looking for funding? You've come to the right place.


Please click on the buttons below to view more information about each category.




Search for funding



Browse funding



View local support



View local success stories

Funding Success?
Click here to let us know

National community news

23/12/2014
Irish Youth Foundation UK Open to Applications

23/12/2014
New Pilot Project Launched by European Commission to Identify Sports Betting Risks

23/12/2014
WREN Launches New Community Fund for England and Wales

[View more national news](#)

REPORT OF THE SERVICE DIRECTOR, YOUTH, FAMILIES AND CULTURAL SERVICES**ARTS GRANT AID 2014-15****Purpose of the Report**

1. The purpose of this report is to advise Members of the applications received to the Nottinghamshire Arts Fund (NAF) and seek approval from Members of funding for a portfolio of grant awards.

Information and Advice

2. The Corporate Grant Aid Strategy 2011-2015 agreed the continuation of the NAF to fund arts projects, and is open to applications from individuals and groups for awards of between £500 and £2,500.
3. Funds are made available through the NAF to supports arts projects that help to deliver against the Council's current priority of 'Supporting Safe and Thriving Communities'.
4. Unlike other NCC grant streams, arts grant aid does not represent revenue funding. Grants made under NAF are for projects with specific outcomes, such as engaging more people in the arts, with defined beginning and end dates. In this way, NCC grant-in-aid invests in groups to act as a catalyst for new and appealing activities, but it does not make groups reliant on this funding. The result is a sustainable arts sector more able to adapt and respond to opportunities.
5. As grants awarded are for specific projects with beginning and end dates, NAF grants do not follow three year agreements and run to a different funding timetable to other corporate grant aid streams.
6. Having an open access scheme also has the benefit of identifying for NCC's Arts Service new partners and initiatives that we can work with to support and develop, even where applicants have been unsuccessful in their initial applications.
7. Applications are received via on online application portal and are assessed by the NCC Arts Development Team against published criteria and guidance. The current round of applications was open from Monday 22 September 2014 and closed on Monday 27 October 2014. The available funds totalled £15,986.

8. A total of 14 applications were received and assessed. Details of all applications and assessment scores are attached as **Appendix 1**.
9. The recommended portfolio of grant awards is presented in Table 1 below.

Table 1

Applicant	Project Name	Area	Amount recommended £
Handmade Theatre Company	Older people's project	Various including Rufford Country Park (N&S)	2,400
Architects of Air	Little Dome project	Various including Rufford Country Park (N&S)	2,500
Lady Bay Children's' Book Festival	Telling Tales: Nottingham Kids' Festival of Imagination	Lady Bay	1,371
Lace City Chorus	Lace City Community Chorus	Various (Gedling, N&S, Mansfield)	2,450
Creative Paths CIC	The Creative Cuppa	Various (Broxtowe, Rushcliffe)	2,480
McBrien, Hannah	Engine Dance: Moving Maps	Gedling	2,250
Movement for All	Interdance	Brinsley (Broxtowe)	1,500
Southwell Music Festival	Come and Sing Mozart	Southwell (N&S)	1,035
		Total	15,986

Other Options Considered

10. Allocation of funding to projects is based on an assessment process that generates a score. Projects with high assessment scores are recommended for funding, up to a point where all available funding is allocated. This process recognises the strongest, most viable projects that contribute most to the published aims of this grant aid programme.
11. Allocation of funds on different criteria or to lower scoring applications was not considered because this would undermine the transparency and fairness of the published process.

12. Other options, for instance a change in priorities for this grant aid programme, would require discussion and agreement by elected Members, as part of the overall grant aid strategy.

Reason/s for Recommendation/s

13. The recommended portfolio of grant awards consists of applications that have scored the highest in the assessment process. These applications meet best the published aims and objectives of the Nottinghamshire Arts Fund, the Grant Aid Strategy and NCC Strategic Plan 2014-18. Some applications were unsuccessful because they did not provide enough information in their applications, so despite some having a good idea for a targeted project there was no convincing evidence of how these projects would be planned and delivered.
14. A recommendation for funding is made for all projects scoring above a lower threshold score of under 27. Applications that score below the threshold score will receive feedback and additional advice as appropriate.

Statutory and Policy Implications

15. This report has been compiled after consideration of implications in respect of crime and disorder, finance, human resources, human rights, the NHS Constitution (Public Health only), the public sector equality duty, safeguarding of children and vulnerable adults, service users, sustainability and the environment and ways of working and where such implications are material they are described below. Appropriate consultation has been undertaken and advice sought on these issues as required.

Financial Implications

16. The recommended portfolio, along with grants recommended in the previous round of funding, represents 100% of the funds (£42,000) allocated to the Nottinghamshire Arts Fund for 2014-15 in line with the current grant aid strategy.

RECOMMENDATION/S

- 1) That the portfolio of grant awards listed in Table 1, based on the information provided, be approved.

Derek Higton
Service Director, Youth, Families and Culture

For any enquiries about this report please contact:

Kevin Tennant
Strategic Arts Development Officer
T: 0115 9774435
E: kevin.tennant@nottscc.gov.uk

Constitutional Comments (SLB 23/12/14)

17. Grant Aid Sub-Committee is the appropriate body to consider the content of this report; it is responsible for grant aid as defined in the Council's Grant Aid Strategy.

Financial Comments (CS 23/12/14)

18. There are no direct financial implications arising from this report as the grant awards are within allocated budgets.

Background Papers and Published Documents

Except for previously published documents, which will be available elsewhere, the documents listed here will be available for inspection in accordance with Section 100D of the Local Government Act 1972.

Grant Aid Strategy 2011-15

Electoral Division(s) and Member(s) Affected

All.

C0555

Appendix 1

Applicant Name	Project Name	Amount requested £	Project Details	Location	Assessment Score	Recommendation
Architects of Air	Little Dome Project	2,500	Architects of Air make inflatable temporary art installations called 'luminaria' open to the public. To research and develop ways the 'Little Dome Luminarium' can be made more accessible to older and disabled people	None specific	29	Yes
Buzzybeatz	Beautiful Bassetlaw Festival of Community Arts	2,500	To deliver a district wide programme of community arts festivals including professional and amateur artists	Retford, Tuxford, Worksop, Harworth (Bassetlaw)	26	No
Creative Paths CIC	The Creative Cuppa	2,480	To deliver arts workshops for adults with dementia and work towards an exhibition to mark a national dementia awareness campaign	Various (Broxtowe, Rushcliffe)	35	Yes

Applicant Name	Project Name	Amount requested £	Project Details	Location	Assessment Score	Recommendation
Deerstock	Pixiestock	2,500	To develop a music festival experience for disabled and learning disabled adults & children	Newton (Rushcliffe)	7	No
Handmade Theatre Company	Older people's project	2,400	To deliver an intergenerational theatre project with an older people's home and primary school to explore themes around nature	Rufford Country Park (N&S)	27	Yes
Lace City Chorus	Lace City Community Chorus	2,450	A programme of singing and performance for women from across the County	Various (Gedling, N&S, Mansfield)	34	Yes
Lady Bay Children's Book Festival	Telling Tales: Nottingham Kids' Festival of Imagination	2,500	To programme and deliver an arts festival (primarily literature) for children and young people	Lady Bay (Rushcliffe)	33	Yes
McBrien, Hannah	Engine Dance: Moving Maps	2,250	To develop a family friendly dance piece based on a theme of 'treasure hunt'	Gedling	35	Yes
Movement for All	Interdance	1,500	To deliver a programme of weekly dance sessions for the over 60s to improve mobility, fitness and creativity	Brinsley (Broxtowe)	39	Yes

Applicant Name	Project Name	Amount requested £	Project Details	Location	Assessment Score	Recommendation
Oasis	Oasis –Carnival Creations	2,500	To create sculptural installations & mural for Oasis grounds with local community	Kilton (Bassetlaw)	16	No
Perks, Jack	Nottinghamshire's Nature	2,000	To print a book of photographs of Nottinghamshire wildlife	Nottinghamshire	5	No
Southwell Music Festival	Come and Sing Mozart	1,035	To encourage younger participants in a community singing project breaking down barriers to classical music	Southwell (N&S)	45	Yes
St George's Day Celebration Group	Ollerton Willow Dragon 2015	2,300	To work with an artist and community to construct a sculptural centrepiece to St George's Day celebrations	Ollerton (N&S)	24	No
Wells, Colin (interaction films)	Rufford Abbey Ghosts	2,500	To make a film with young people about the ghost stories of Rufford Abbey Country Park	Rufford Abbey Country Park(N&S)	24	No



**REPORT OF THE CORPORATE DIRECTOR POLICY, PLANNING AND
CORPORATE PERFORMANCE**

NOTTINGHAM CREDIT UNION

Purpose of the Report

1. The purpose of this report is to seek approval to award up to £20,000 in grant aid funding to Nottingham Credit Union [NCU] for 2014/15

2. Information and Advice

3. Credit Unions have operated in Nottinghamshire since the early 1990s established first in the City, eg Fair Goose in Forest Fields / Hyson Green and Red Lion in Bulwell. In the wider county, credit unions have developed more slowly with the first credit union, Worksop and District, established in 2000.
4. In recent years the city based credit unions merged to form NCU, a larger single credit union being more sustainable. In 2010 NCU extended its common bond (the area in which it is allowed to operate) to cover the county of Nottinghamshire and has since merged with:
 - Cashfields (covering Ashfield)
 - Oakleaf (the County Council's credit union)
 - Sherwood Forest (formerly Maun Valley covering the Mansfield area)
5. These mergers were encouraged and supported (financially) by Nottinghamshire County Council. £40,000 was awarded to NCU in 2010 through the economic development budget to enable the merger to take place. The 2 Shires Credit Union (incorporating Worksop and District) continues to serve the Bassetlaw area.

Membership and Coverage

6. NCU have been operating in Mansfield for 4 years with the support of the District and County Councils. The operation is not currently viable in its own right and it needs to grow from their current 400 members to about 1,600 for it to be viable. A grant of up to £20,000 will help NCU to develop and maintain the operation and to invest more in it so that it can grow to sustainability over the time. NCU have applied for funding from the Lloyds Credit Union Development Fund, which would, in conjunction with the County Council funding, enable the group to move their own premises.

7. Membership of NCU in the county is growing and NCU are currently looking for their own premises as the move to the current shared location has resulted in a fall in members. Recent research from Experian shows that districts such as Mansfield and Ashfield have a high proportion of potential clients in economic groups that fit their target members and the grant will help them develop services for this client group.
8. NCU services operate across the county, the grant aid requested will specifically target Mansfield and Ashfield and aims to increase the number of vulnerable people who lack financial awareness / capability who are able to self-help. This will be through reducing outgoings by consolidating expensive credit and increasing savings and so preventing the need for debt advice and build resilience. NCU services help people help themselves and this has an impact on many local services from healthcare to advice provision. A mixture of financial education and access to low cost finances help will help local people improve our community.

The current NCU membership is:

District	Membership as at 30 11 12	% of total	Membership as at 30th Nov 2014	% of total
Ashfield	155	3%	187	3%
Bassetlaw	11	0%	21	0%
Broxtowe	335	6%	330	5%
Gedling	339	6%	493	8%
Mansfield	401	7%	345	5%
Newark and Sherwood	85	1%	173	3%
Rushcliffe	181	3%	294	5%
County	1507	25%	1843	29%
City of Nottingham	4288	72%	4,288	67%
Others*	192	3%	169	3%
Total	5987	100%	6388	99%
* Membership of NCU is restricted to those who live or work in the City of Nottingham or Nottinghamshire, or people who are tenants of certain Housing Associations, plus their family members living at the same address.				

Nottingham Credit Union Services

9. NCU offers a number of savings accounts and affordable loans, the benefits may be summarised as follows:
10. Saving regularly with a credit union is particularly beneficial for people on low incomes by offering them access to affordable loans. NCU offers low cost, unsecured personal loans. Larger loans are available for people who have previously borrowed and

have a good repayment record. Loans include life insurance, there are no set up fees, no repayment penalties or hidden charges. Some members, particularly young parents, develop a sound financial understanding and no longer require loans.

11. Using Nottingham Credit Union for a loan makes sound financial sense. The table below shows the closest comparisons for a loan of £400.

Lender	Loan Amount	Period of Loan	Interest charged
Provident (door step)	£400	32 weeks	£240
Wonga	£400	30 days	£96
Nottingham Credit Union	£400	32 weeks	£48

12. NCU is committed to continuing its services, but without additional revenue funding it will have to reduce services and operating overheads. This will put the credit union back a number of years in terms of growth and sustainability. NCU need to plan now to keep the service going until they become self-sustaining hence the funding request to the County Council.

13. Grant Aid will help NCU to involve and work with local communities to:

- Increase money to spend in local community – by reducing the interest paid on a loan, NCU will help to increase the money left over in the pockets of our poorest communities. This money is likely to be spent locally.
- Increasing money to be lent out locally – more savings mean more money available for local lending.
- Reduce demand on advice services – by reducing the number of people able to borrow irresponsibly (borrow too much compared to incomings) this will reduce the number of people seeking debt advice. By encouraging savings people will be better able to cope with crisis.
- Reducing stress levels and demand on health services. Money worries are a major cause of stress. Research by Dr Gathergood from Nottingham University in 2012 show people struggling to pay loans off are three times more likely to have mental health problems.

Financial position

14. Increasing the number and amount of loans is vital to the credit union becoming financially sustainable. NCU have made good progress with this showing an increase in earned income and the challenge for NCU is to continue growing their loan income to replace that lost from grants.

15. One measure taken in 2013/14 was to increase the maximum interest rate NCU charge from 26.8% APR to 42.6% APR. They have done this on smaller loans in order to cover costs; this has meant a minimal difference to loans but collectively means they are closer to self-sufficiency than ever.

Other Options Considered

16. If NCC did not approve grant aid funding, Nottingham Credit Union would continue to operate without financial support from the County Council. However the impact of reduced budgets would be significant in that it would:
- increase the likelihood of bad debts. Experience has shown that if no local collection point is available this leads to an increase in members defaulting;
 - reduce access for residents to affordable loans. As demonstrated above responsible borrowing through a credit union could save families hundreds of pounds;
 - restrict the opportunity to develop further services. NCU are exploring “jam jar” accounts where money is deposited in a Credit Union account and key bills are paid first. Residents in receipt of universal credit will be able to use these accounts and avoid defaulting on rent and council tax etc;
 - undermine the steps taken in the last two years to grow by merging Nottinghamshire credit unions and increasing earned income.

Financial Implications

17. The proposed grant of £20,000 can be met from the grant aid budget.

Reason(s) for Recommendation(s)

18. To support the development and sustainability of NCU and ensure that Nottinghamshire residents continue to benefit from its services.

Statutory and Policy Implications

19. This report has been compiled after consideration of implications in respect of finance, equal opportunities, human resources, crime and disorder, human rights, the safeguarding of children, sustainability and the environment and those using the service and where such implications are material they are described below. Appropriate consultation has been undertaken and advice sought on these issues as required.

RECOMMENDATION(S)

20. That Members approve a contribution of £20,000 from the Grant Aid budget. This will be subject to a negotiated grant aid agreement which will include an increase in the County.

Jayne Francis-Ward

CORPORATE DIRECTOR POLICY, PLANNING AND CORPORATE SERVICES

For any enquiries about this report please contact:

Cathy Harvey
Team Manager, Community and Voluntary Sector Team
0115 97 73415

Constitutional Comments (LM 6/1/15)

The recommendations within the report fall within the terms of reference of the Grant Aid Sub Committee'

Financial Comments (SEM 15/1/15)

The financial implications are set out in the report.

Background Papers

Except for previously published documents, which will be available elsewhere, the documents listed here will be available for inspection in accordance with Section 100D of the Local Government Act 1972.

Electoral Division(s) and Member(s) Affected

ALL

27 January 2015**Agenda Item: 7****REPORT OF THE CORPORATE DIRECTOR POLICY, PLANNING AND
CORPORATE SERVICES****GRANT AID ANNUAL REVIEW 2013/14****Purpose of the Report**

1. To provide an overview of the 2013/14 Grant Aid Programme to Members of the Grant Aid Sub-Committee.

Information and Advice

2. At the November 2011 County Council Meeting members agreed a Grant Aid Strategy for the County Council, the key elements of this Strategy included:-
 - § Centralising the funds and streamlining processes
 - § A Member led approach
 - § Longer term agreements – 3 Years where possible
 - § Proportionate payment and monitoring arrangements
3. In January 2012 members approved grant aid to 130 Voluntary & Community Sector (VCS) organisations, with the majority of grants being awarded for a 3-year period from 1 July 2013 to 30 June 2015 (note that each year of the Grant Aid programme runs from 1 July to 30 June).
4. In addition to the 130 VCS organisations that were awarded 3-year Grant Aid Agreements, members also approved over 200 sports and arts – and 18 play scheme grants in 2013/14.
5. Members also approved a small number of additional grants for 2013/14 with a total value of £91,100.
6. An annual review of the Grant Aid Programme for 2012/13 was presented at the September 2013 Grant Aid Sub-Committee. There are some slight differences to how the 2013/14 information is reported due to improvements in the monitoring arrangements and information management.
7. Appendix 1 provides a summary of information about the 2013/14 grant aid programme.

Other Options Considered

8. No other options are necessary as this report is for noting only, and to provide an overview to members of decisions already approved.

Reason/s for Recommendation/

9. This is an overview of the Grant Aid programme and for noting, there is no recommendation

Statutory and Policy Implications

10. This report has been compiled after consideration of implications in respect of finance, the public sector equality duty, human resources, crime and disorder, human rights, the safeguarding of children, sustainability and the environment and those using the service and where such implications are material they are described below. Appropriate consultation has been undertaken and advice sought on these issues as required.

Financial Implications

11. There are no new financial implications as a result of this report.

RECOMMENDATION

That Members note the report.

Jayne Francis-Ward

Corporate Director, Policy, Planning and Corporate Services

For any enquiries about this report please contact:

Cathy Harvey

Team Manager, Community and Voluntary Sector Team

0115 97 73415

Constitutional Comments (LM 6/1/15)

The report falls within the terms of reference of the Grant Aid Sub Committee.

Financial Comments (SEM 15/01/15)

There are no new financial commitments contained in this report

Background Papers and Published Documents

Except for previously published documents, which will be available elsewhere, the documents listed here will be available for inspection in accordance with Section 100D of the Local Government Act 1972.

Electoral Division(s) and Member(s) Affected

All

Appendix 1: Overview of the Grant Aid Programme – 2013/14

The adoption of the Grant Aid Strategy in November 2011 sought to bring about a number of significant changes in the way that Nottinghamshire County Council (NCC) worked with the Voluntary and Community Sector. The grant aid application process (which was significantly over subscribed), led to the Authority awarding three year grants to the value of £2.2 million in each of the first two years - and just under £2m for the third year..

Over 130 Voluntary & Community Sector (VCS) organisations were successful and we also received a number of successful joint bids, for example, from the Citizens Advice Bureaux, the MIND Network and Infrastructure Organisations. In addition to this over 100 organisations and individuals were awarded grants under the sports, arts, & summer play schemes during 2013/14

The VCS continue to make a significant contribution to the wellbeing of Nottinghamshire residents – with over 350,000 people directly benefiting from a vast range of grant aided activities.

More than 28,000 people make an invaluable contribution by freely giving their time and skills to ensure that others benefit from the activities supported by NCC.

The sector is continuing to report challenges in meeting service user needs and sustainability at a time when financial sources are reducing. In December 2014, Third Sector magazine reported that: *“...the voluntary sector continues to live under clouds of uncertainty and negativity, and faces a number of challenges this year....”* – this further illustrates the importance of grant aid in making a crucial contribution to improving the lives of the Nottinghamshire people. Sadly, despite the support via grant aid, since the start of this grant aid round, 7 groups have closed – and a key infrastructure group has announced that they will be closing on 31 March 2015.

Some of the changes introduced with this round of grant aid included:

- § The centralisation of the grant aid process – all previous grant funds bought under the stewardship of a corporate team
- § Members initially through a Reference Group and more recently through the Grant Aid Committee being at the centre of decision making
- § Three-year grant aid agreements for most groups – to enable longer term planning
- § Proportionate monitoring and payment arrangements – reducing transactions by over 60%
- § Improved effectiveness and efficiency of monitoring arrangements and information management (e.g. by revising the monitoring questions, using online tools and introducing monitoring visits to over 50% of groups).

The following pages provide an overview of the volume of activity, outcomes and service user beneficiaries that the grant aid helps to support. The data provided, is just a snapshot – as there are many benefits to individual lives which cannot be quantified or measured.

We would like to thank Cathy Harvey and the Community & Voluntary Sector Team for their diligence in developing and managing the grant aid process under challenging circumstances – as well as the VCS groups and volunteers – for making a real difference to the lives of so many people across the County.

Cllr Joyce Bosnjak
Deputy Leader and Chair of Grant Aid Sub Committee

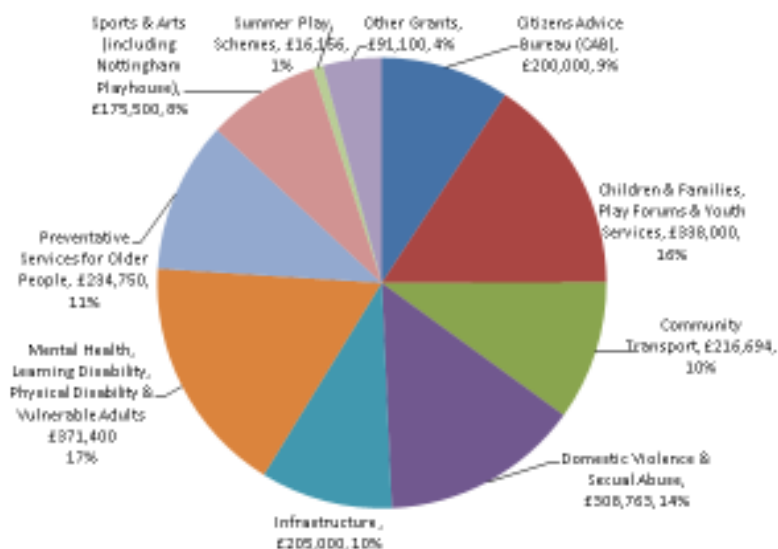
Cllr Martin Suthers OBE
Vice Chair of Grant Aid Sub Committee

January 2015

<u>Contents</u>	<u>Page</u>
Introduction	3
Grant Aid Expenditure By Theme	5
Grant Aid Expenditure By Geographical Area	6
Service Users & Volunteers	7
Citizens Advice Bureau	8
Children, Families & Youth	9
Community Transport	10
Domestic Violence	10
Infrastructure Support	11-12
Mental Health, Learning & Physical Disability	13
Preventative Services for Older People	14
Sports & Arts	15
Summer Play Schemes	16
Additional grants in 13/14	17
Group Closures 12/13 & 13/14	18
Narrative from Monitoring	19-20

Grant Aid – Expenditure Schedule 2013/14 – By Theme

	2013-14
Citizens Advice Bureau (CAB)	£ 200,000
Children & Families, Play Forums & Youth Services	£ 338,000
Community Transport	£ 216,694
Domestic Violence & Sexual Abuse	£ 308,763
Infrastructure	£ 205,000
Mental Health, Learning Disability, Physical Disability & Vulnerable Adults	£ 371,400
Preventative Services for Older People	£ 234,750
*Sports & Arts (including Nottingham Playhouse**)	£ 175,500
*Summer Play Schemes	£ 16,156
*** Other Grants	£ 91,100
	£2,157,363



Notes

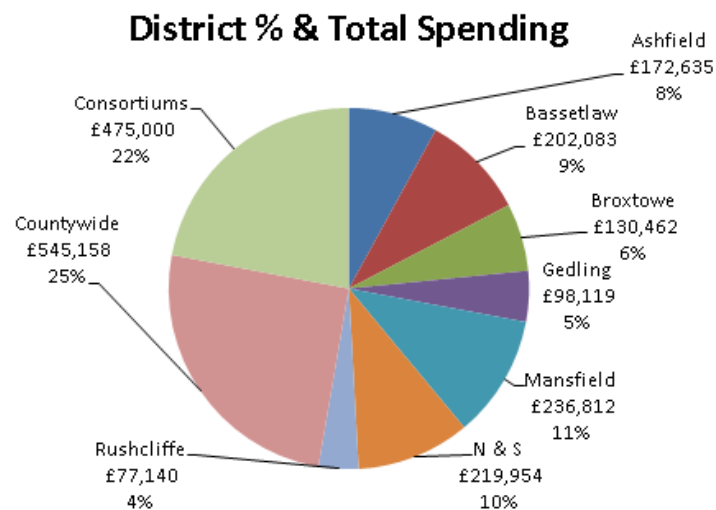
*These themes historically operate on an annual basis (as opposed to a 3-year programme).

**The Nottingham Playhouse agreement ceased on 30 June 2014.

*** Other grants cover in year additional grants.

Grant Aid – Expenditure 2013/14 – By Geographical Area

District	Number of grants awarded	£
Ashfield	28	172,635
Bassetlaw	31	202,083
Broxtowe	22	130,462
Gedling	30	98,119
Mansfield	31	236,812
Newark and Sherwood	37	219,954
Rushcliffe	40	77,140
Countywide	40	545,158
Consortiums	3	475,000
	262	2,157,363



Note:

* Countywide - this figure is so large because it includes a wide range of awards, which include Infrastructure, CAB Services, Domestic Violence, Sports, Arts and a proportion of several other award categories

** Number of grants includes Sports, Arts, Play Schemes and a small number of "in-year" awards outside the 3 year agreement arrangements.

Grant Aid – Number of Service Users, Volunteers and Volunteer Hours/Week 2013/14

Category	Number of service users*	Number of volunteers*	Number of volunteer hours/week*
Citizens Advice Bureau (CAB)	31,712	21,565	1,730
Children & Families, Play Forums & Youth Services	24,935	3,871	8,164
Community Transport	57,703	292	
Domestic Violence & Sexual Abuse	1,194	-	-
Infrastructure	126,779	1,876	-
Physical Disability, Learning Disability, Mental Health & Vulnerable Adults	9,340	561	1,498
Preventative Services for Older People	36,391	686	2,272
Sports & Arts	64,884	320	-
Summer Play Schemes	2,598	283	3,118
<i>Other Grants**</i>	-	-	-
Total	355,536	29,454	16,782

*Data provided by groups in their Interim Monitoring Report 2013/14 or in their 2013/14 Annual Report. Some categories may not have provided data due to historic differences in reporting requirements.

** Other grants cover one-off grants.

Citizens Advice Bureaux (CAB)

A consortium which includes all the Nottinghamshire CABs: Ashfield, Bassetlaw, Broxtowe, Mansfield, Nottingham and District and Ollerton and District

£200,000

31,712 clients helped with almost 86,000 problems

21,500 volunteers; (with over **200** new volunteers recruited & trained - and **over 50%** have gone on to paid work)

90,000 Volunteer hours per year (value of volunteer time: £1.6m)

6000 clients helped with **£64 million** of debt

£10.7 million of benefit gains for clients

Debt & Benefit account for **73%** of all enquiries

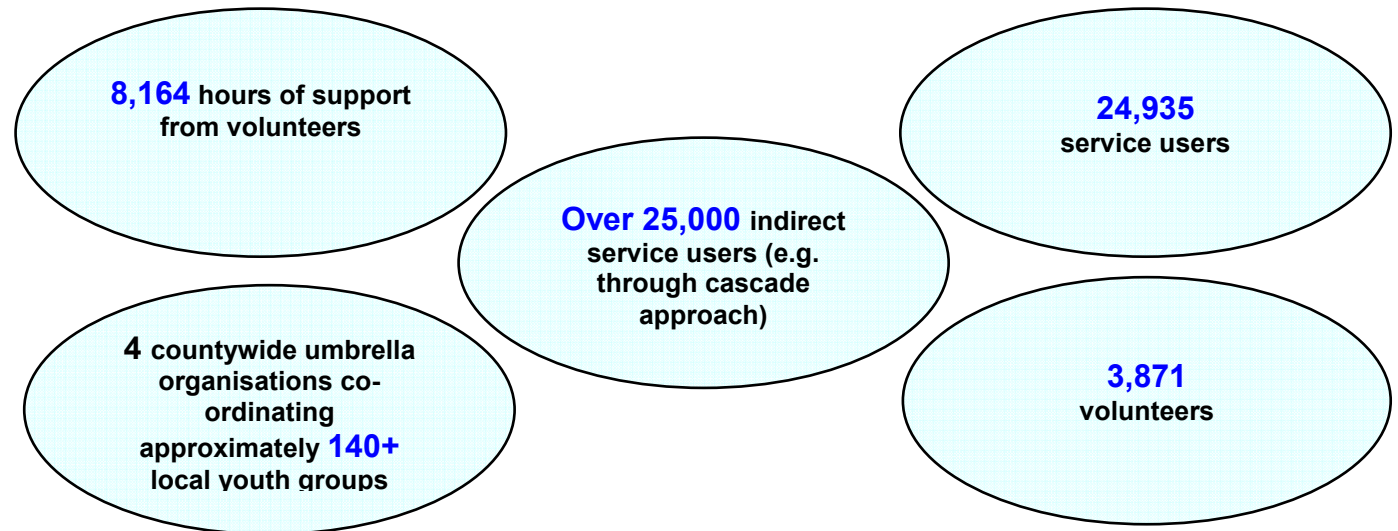
The grant aid agreement with the CAB is based on providing the following services:

Subject	Self-Help Information	Assisted Information	Generalist Advice	Casework
Welfare benefits				
Money advice				
Discrimination				
Employment				
Consumer				
Immigration				
Family				
Housing				
Taxes				
Health				
Education				

Source: Citizens Advice Bureau, Annual Report 2013/14 and briefing 2013/14

CAB client survey as at June 2014

Description	% satisfied
Overall Service	100%
Would use service again	100%
Understood by advisor	99%
Expectations met	99%
Consultation time	99%
Location	99%
Advice understandable	98%
Easy to find	98%
Advice useful	98%
Would recommend to others	98%
Waiting times	95%
Know next move	95%
Opening times	94%



Case study: "...staff have been brilliant - they gave me the support I needed...I have just started a youth work apprenticeship which is my dream job..."

Jane (name change) was 16 when her mum met a new partner and moved to London - telling Emma that she had one month to find somewhere else to live. Emma was offered a place in a local hostel where she met workers from the project.

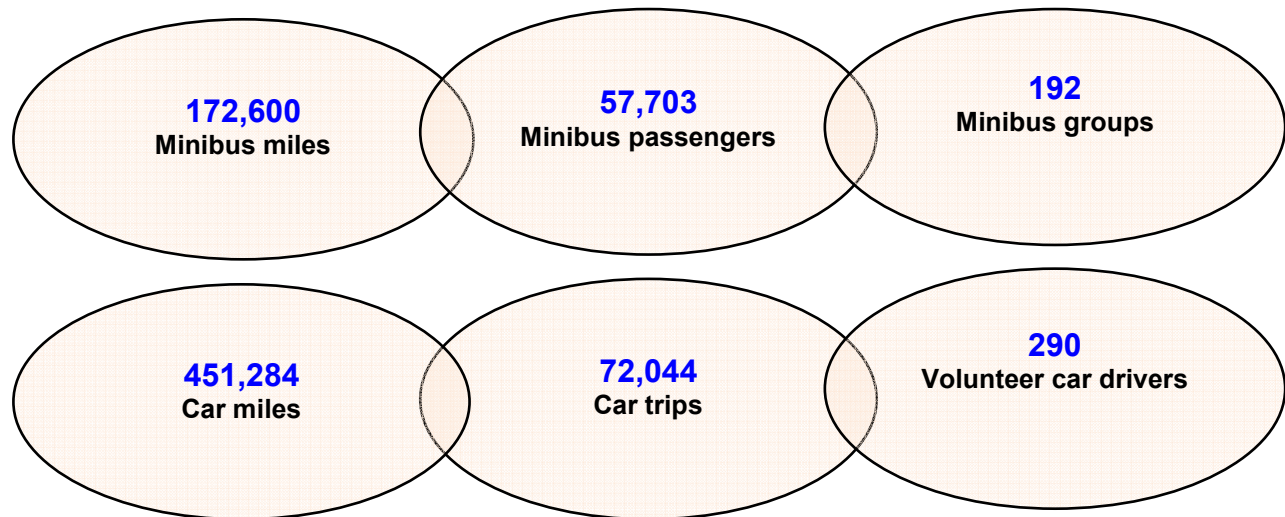
"Since becoming a peer educator I have gained a lot of confidence... I can now see what happened as a learning curve and not a disaster. From day one the BYH staff have been brilliant - they gave me the support I needed. If I hadn't become a peer educator I can definitely say that I would not be the person that I am today. I have just started a youth work apprenticeship which is my dream job, and I can still go into schools as a peer educator. I haven't been this happy in a very long while."

Case study: "He is now looking to complete the course and gain a job in IT."

Tim (name changed) was shy and introverted and didn't mix well when he first came to us. He has since learned wonderful interpersonal and social skills and is now able to relate well to others. This has helped him take up a college course and thrive in that environment. He is now looking to complete the course and gain a job in IT.

Community Transport

£216,694



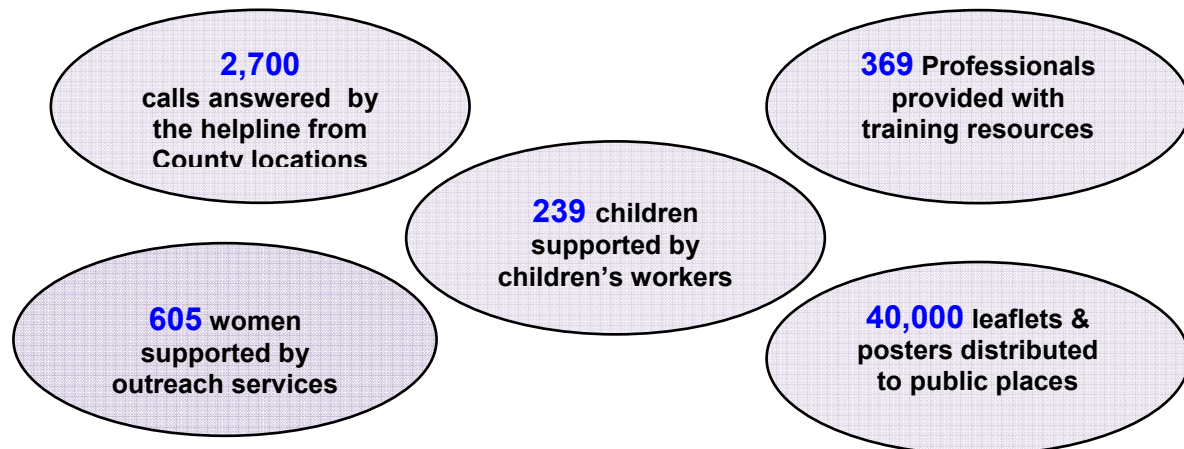
Note: Re: car miles – in the 2012/13 overview, 264,331 miles were reported; however, the actual figure was 425,401 miles in 12/13 and 451,284 miles in 13/14. This represents a 6% increase in car scheme mileage, partly attributable to the introduction in 13/14 of Car Scheme Plus wheelchair accessible services in the east of the county and the introduction of Ring & Ride services for individual bookings in Mansfield/Ashfield.

Minibus (group travel) activity shows a modest decrease which could be due to seasonal issues i.e. weather and also as a result of the introduction of the Ring & Ride style services for individual bookings.

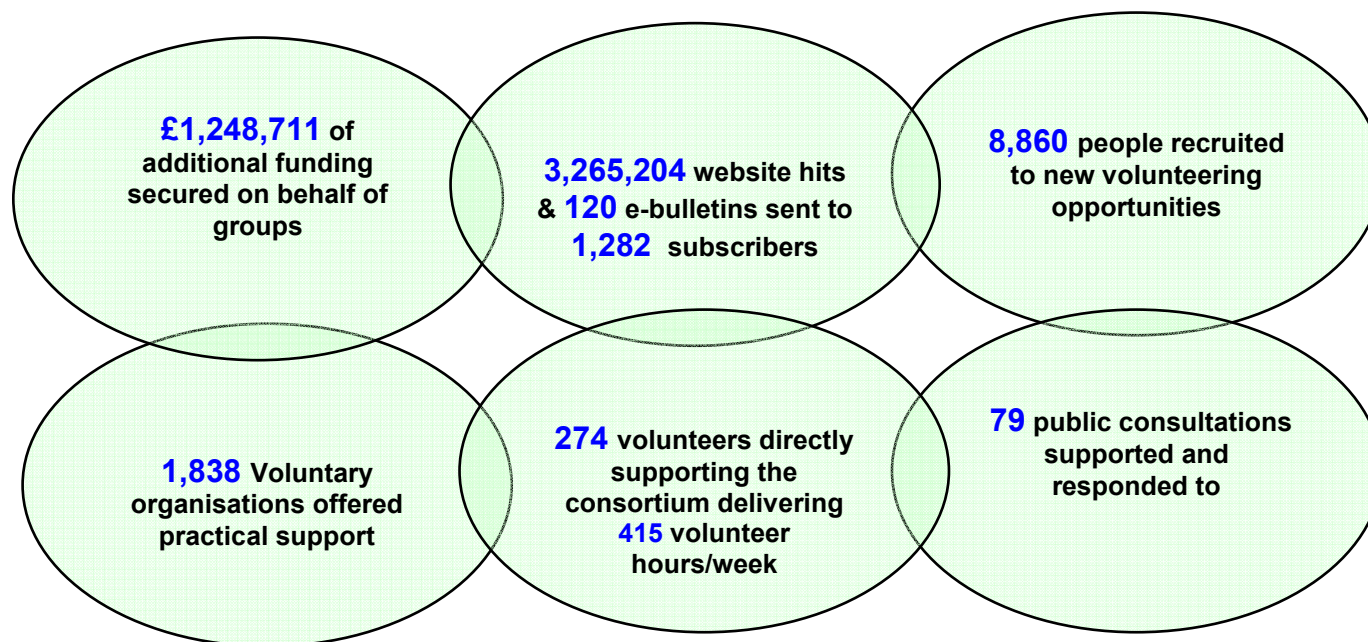
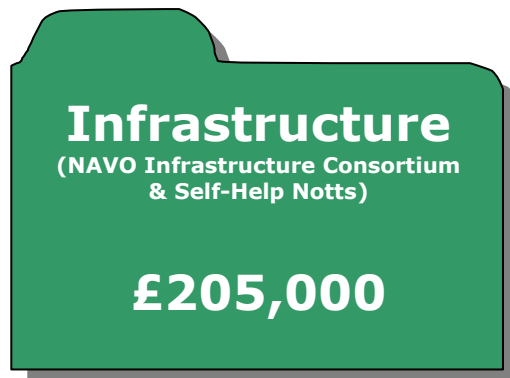
Domestic Violence & Sexual Abuse

(previously known as 'Domestic Violence')

£308,763



Note: Seven specialist domestic violence organisations were supported and grant aid provided a contribution towards the costs of the 24 Hour domestic violence helpline, outreach and support for women and children as well as training and resources for professionals. On 01 July 2014, the domestic violence groups transferred to Public Health (and therefore, are no longer part of the grant aid programme). The sexual abuse groups will also transfer to Public Health on 01 July 2015.



NAVO is a county wide registered charity that promotes, connects and represents the community sector throughout Nottinghamshire. NAVO is the lead body for the Infrastructure consortium which includes the following partners: the Northern Infrastructure Partnership (Ashfield Voluntary Action, Bassetlaw CVS, Voluntary Action Broxtowe & Mansfield CVS), the Southern Alliance Infrastructure Partnership (Gedling CVS, Newark & Sherwood CVS & Rushcliffe CVS), Rural Community Action Nottinghamshire (RCAN) and Community Accounting Plus. The Infrastructure consortium supports services to the Nottinghamshire VCS achievements during the 2012/13 Grant Aid year include:

Delivery and/contribution to at least 33 Forums, Networks, Task Groups, Boards and Funding Fairs across the County – including representation (by NAVO) on the Nottinghamshire Safeguarding Children Board, the Nottinghamshire Children's Trust Board and the Nottinghamshire Safeguarding Adults Board.

Volunteer Markets, Volunteer Awards Ceremony & Altogether Healthier Conference in Mansfield

Volunteers Week event, Bassetlaw Big Breakfast, Bassetlaw Big Day Out, Young People's Market Place & Princes Trust event, Launch of 'Men in Sheds' in Bassetlaw

Volunteers Week, Charity Market, and Make A difference Day in Ashfield

The launch of the Rushcliffe Voluntary Sector Forum has led to the development of new initiatives, including a project by the Friends of Rushcliffe Country Park, and joint working between Rushcliffe CVS and Rushcliffe 50+ Forum to organise and deliver events in rural communities

The launch of Rushcliffe Befriends funded by Lloyds TSB and Lottery, secured £101k from the Lottery.

The Rushcliffe Together – Community Cohesion Network increased its membership to 157 individuals from 90 organisations and networks and organised its 6th Annual Event, 'Five Ways to Rural Health & Well Being'.

RCAN reported that:

- IT Community Champions secured funding from the Lottery for £120,000 for the next three years to deliver training to 1250 learners across the county.
- Build, Grow, Cook and Eat : created new community garden built by beneficiaries at Hope Beeston. Produce grown will be used to help teach cooking skills to families. Another piece of land has been donated to this project which will be used to extend the scale of activities
- The oil members saved a total of £15,952.56 over the year between them.

Note that:

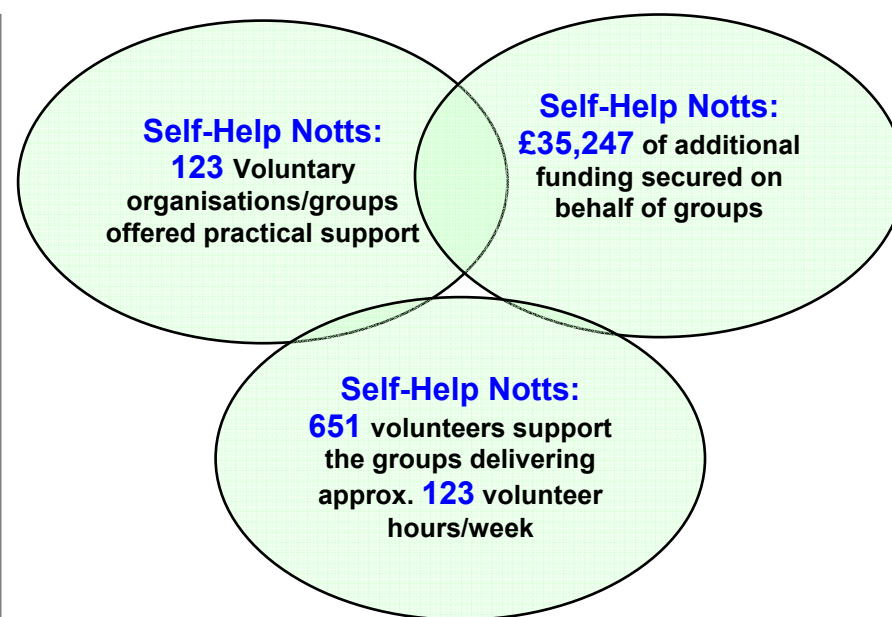
- *The boards of Gedling, Newark & Sherwood and Rushcliffe CVS unanimously agreed to merge into one organization on 1st April 2015, subject to due diligence and the approval of members.*
- *In October 2014, NAVO's Executive Board announced that NAVO would formally close on 31st March 2015. The announcement letter and further information about NAVO can be found at: <http://www.navo.org.uk/>*

Self Help Nottingham and Nottinghamshire is a unique organisation which helps to create, support and promote self-help groups – and bridges the gap between self-help groups and health and social care professionals.

Self Help Nottingham and Nottinghamshire has a number of partnerships with local public and private sector organisations as well as colleagues in the voluntary and community sector. Self Help Nottingham and Nottinghamshire is also involved with the self-help European experts forum, which meets every two years. Source: <http://www.selfhelp.org.uk/nottinghamshire>

Examples of development, support and dissemination of good practice in service provision include:

Delivery of 22 events and 15 training sessions (which created valuable networking opportunities)
Development of all training materials, briefing sheets and a new work book style starter pack (for new self-help groups)
Development of service to deliver support to groups to start up online (alongside training and one to one support using social media).



**Mental Health
Learning Disability
Physical Disability
Vulnerable adults**

£371,400

9,340 service users benefit from
a wide range of services including:

home assessments for equipment and adaptations,
benefits advice for disabled clients, one-to-one
support for people with mental health issues, skills-
based training, arts & crafts, personal development
and social activities.

561
volunteers

77,896 volunteer
hours per year;
(**1,498** volunteer
hours per week)

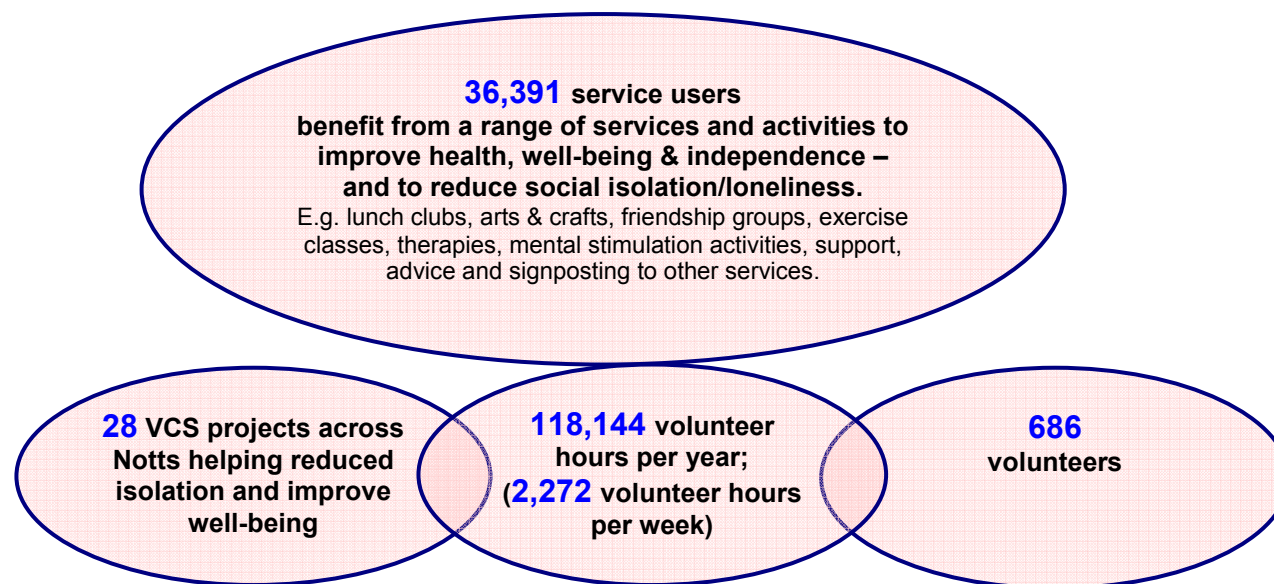
21 VCS projects
across Notts helping
reduced isolation and
improve well-being

Case study: “His self-esteem has increased enormously and his mental health has improved significantly...”

Richard (name changed), is 22 and has Asperger's. Having left college he had moved into his own flat accessing housing benefit. When he came to us, it transpired that Richard had no meaningful or productive activity apart from three hours each week in a local pub where he supported a Karaoke disco. Richard had no food and no money (Richard was not receiving his benefits which were being diverted to a parent in another county who was experiencing their own personal issues). We also found out that Richard's flat had no carpets, no cooker, was poorly decorated and dirty.

We worked with Richard to have his benefits correctly directed to his own bank account. Whilst waiting for his benefits to come through, we ensured that he had adequate food and acquired a small amount of emergency funding. We introduced him to a wide range of activities that we organise which provided him with a variety of things to do and a new social circle. He now volunteers each week to support less able service users. His self-esteem has increased enormously and his mental health has improved significantly. We have also supported him to secure some work for a few hours each week within the town.

Preventative Services for Older People £234,750



Case study: “She is like the daughter I never had....she’s my lifeline, a treasure to me.”

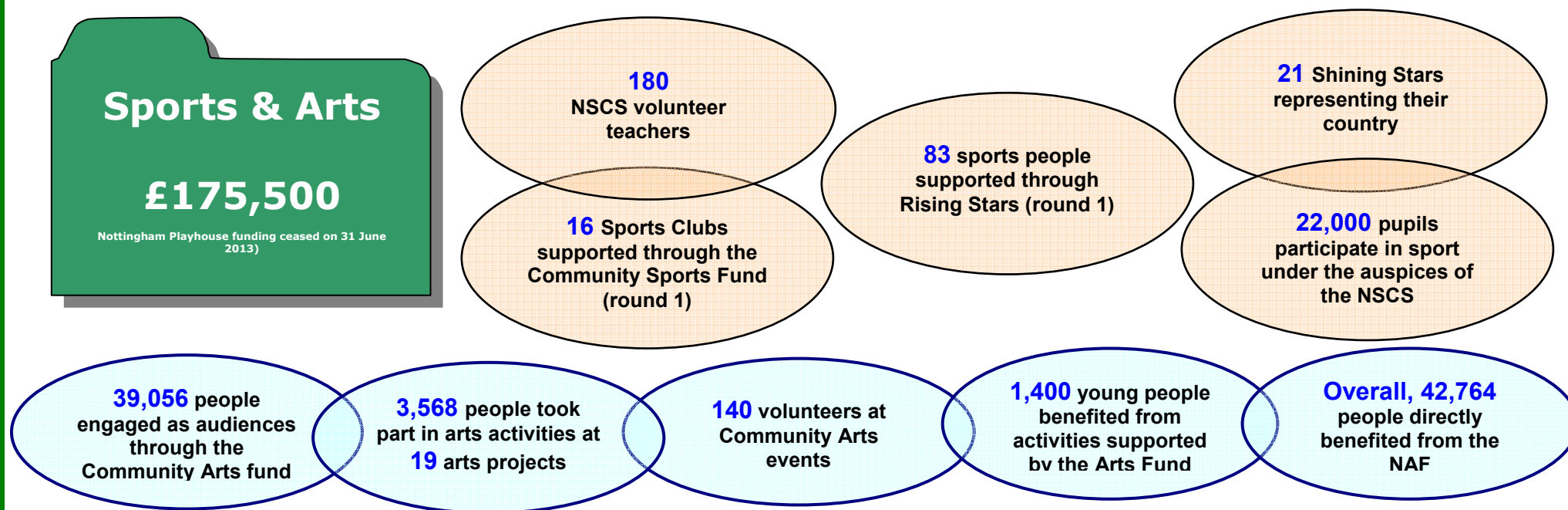
Mrs H is 86 years old and lives alone. Mrs H has poor vision and after a fall, she had low confidence and became a little forgetful. Mary (name change) is a volunteer who had taken early retirement but wanted to ‘keep busy’. Mary and Mrs H were matched up and quickly connected. They found some common interests and mutual topics of conversation. After a couple of months Mary asked if she could increase the number of visits she was making to Mrs H as they were getting on so well and consequently, Mary now makes two visits each week.

Mrs H’s eye sight has deteriorated event more, leaving her mostly housebound. Therefore, Mary now includes a short walk each week as part of her support, takes Mrs H shopping and occasionally they go for lunch. Mrs H says of her volunteer visitor: “*She like the daughter I never had....she’s my lifeline, a treasure to me*”.

Case study: “The effect of his healthier regime was sufficient that his diabetes has improved to the point where he no longer has to inject.”

A 73 year old man has been attending sessions since the start of the project. His GP had concerns about his lifestyle and had seen publicity about our healthy living activities and referred him to our group. The impact wasn’t instantaneous but having seen the benefits that others were experiencing, and with the group’s encouragement, he embarked on a more nutritious eating regime and increased the level of exercise that he undertook. The effect of his healthier regime was sufficient that his diabetes has improved to the point where he no longer has to inject.

Grant Aid themes that run on a different funding cycle to the corporate Grant Aid programme:



Note:

Grants made under the **Community Sports Fund** are for projects with specific outcomes, such as engaging more people in sport, with defined beginning and end dates. In this way, Grant Aid invests in groups to act as a catalyst for new and appealing activities, but it does not make groups reliant on this funding. The result is a sustainable sports sector more able to adapt and respond to opportunities.

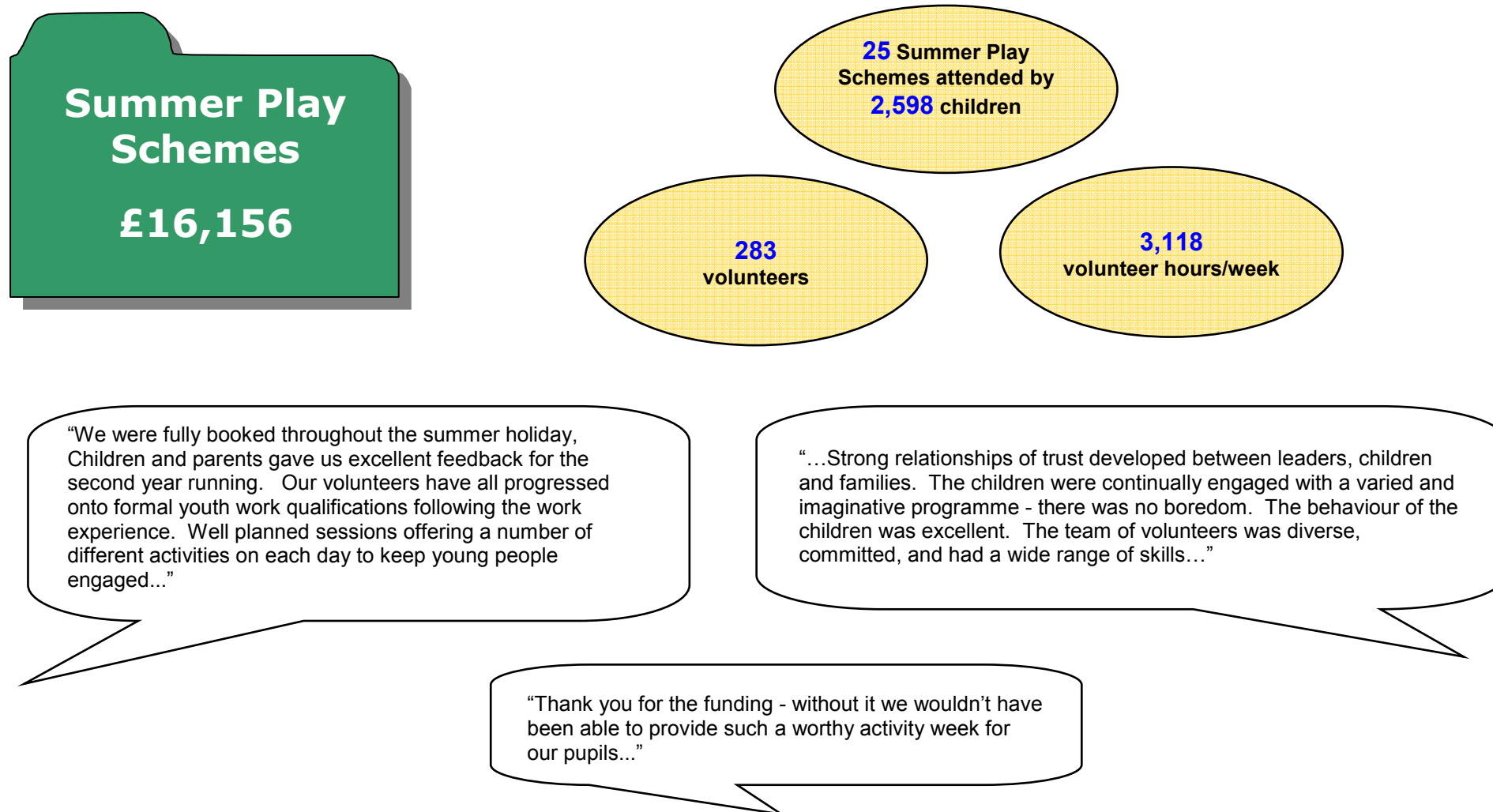
Evaluation and monitoring undertaken from the 13 projects which concluded in January 2013 have evidenced that sports participation levels and volunteering had increased. In total over 700 participants benefited from the Community Sports Fund with approximately 100 new people engaging in sport as a direct result of the funding. The projects also included up-skilling over 50 of the volunteering workforce through various leadership programmes.

The aim of **'Rising Stars'** is to support talented young athletes at a National level who are resident in Nottinghamshire and in full-time education, with costs such as travel, training and accommodation. There is a maximum award of £400.

The aim of **'Shining Stars'** is to support talented athletes who are currently performing at an international level within their sports. The maximum award is £1,500 for tier one athletes, with a reduced amount being made to second tier athletes. Shining Stars has one round which opens for applications in the autumn each year. This grant scheme was initially conceived in the run up to London 2012 Olympic and Paralympic games. This will be the last award and the grant scheme is to be closed.

The **Nottinghamshire Arts Fund** provides grants for between £500 and £2,500 to support arts activities that are led locally, deliver a range of outcomes and secure additional external partnership funding. The projects must be specific and time limited, ensuring that they do not become seen as revenue grants. It is anticipated that the arts projects will secure an additional £35,616 of external match funding Nottinghamshire arts.

Grant Aid themes that run on a different funding cycle to the corporate Grant Aid programme (continued):



Note:

- There is one Summer Play Scheme round per year – schemes must be delivered during the school summer holidays
- Most Summer Play Schemes reported a deficit but were able to fill this via voluntary donations and other grants
- All groups were visited whilst their schemes were running.

Grant Aid themes that run on a different funding cycle to the corporate Grant Aid programme (continued): One-Off Grants

Members also approved a small number of additional grants for 2013/14 with a total value of £91,100

Organisation	Theme	District	Amount Awarded 2013/14
Mansfield Woodhouse Community Development Group	One Off Grant	Mansfield	£5,000
Nottingham Credit Union	One Off Grant	Countywide	£22,000
The Manton Centre for Sport & Learning	One Off Grant	Bassetlaw	£10,000
The Tin Hat Centre	One Off Grant	Ashfield	£10,000
The Roosevelt Scholarship	Two Year Agreement	Countywide	£5,000
The Nottinghamshire Council for School Sports	One Year Agreement	Countywide	£39,100
			£91,100

Group closures

Four groups closed in 2012/13 and three closed in 2013/14. The reasons for closure were lack of funding or loss of a key worker leading to unsustainability of the project / service. Groups were asked to repay the due proportion of unspent grant after the closure.

GA Year of Closure	Organisation	Theme	District	Date of Closure	Grant Aid	Notes
2012-13	Community CentrePoint Ltd	Community Transport	Ashfield	28 Jan 2013	£ 3,899.00	Closed due to unsustainable finances
2012-13	Roshni NAWA Ltd	Domestic Violence and Sexual Abuse	Nottingham City	31 Jan 2013	£ 10,000.00	Closed due to unsustainable finances
2012-13	Christ Church PCC	Youth Services	Bassetlaw	01 Jun 2013	£ 2,500.00	The member of staff running the project left and no replacement could be found.
2012-13	Nuthall Temple Luncheon and Friendship Club	Older People	Broxtowe	03 Jun 2013	£ 560.00	The group did not provide a reason for closure
2013-14	Tap Youth Ltd	Youth Services	Ashfield	05 Feb 2014	£ 1,000.00	The group experienced difficulties retaining staff and closed as a result
2013-14	Gedling CVS (Befriending Scheme)	Older People	Gedling	20 Mar 2014	£ 2,500.00	Be-friending coordinator suffered ill health and a suitable replacement could not be found.
2012-13	Home Start Dukeries	Children and Families	Mansfield	30 Jun 2013	£ 17,640.00	Closed due to unsustainable finances

Interim Monitoring Report 2014:

- An overwhelming majority of groups reported that they **achieved what they set out to achieve** during the first two years of their Grant Aid Agreement.
- For the small number of groups who did not achieve what they set out to do, they provided legitimate reasons as to why – for example, one group's premises was damaged by fire – therefore, they were restricted in the activities that they could deliver for a period of time.
- Almost 80 groups reported that they had **received recognition** at a local, regional or national level for their work. For example:

"...we helped to promote awareness of issues faced by disabled people in the local media...We have also helped Nottinghamshire CC develop pilot projects (brokerage and support planning), advised statutory organisations on improving access to buildings/facilities and nationally fed into DWP (Dept of Work & Pensions) consultations on changes to welfare benefits..."

"Mind is at the forefront of campaigning for and designing mental health services at District and County level as well as feeding into National Mind strategies and developments across the East Midlands Region - including the development of an assessment toolkit for people with dementia and associated mental health issues and reporting on the introduction of personalised services..."

"....volunteers are encouraged to put forward ideas at a National Level. The County is going forward with an iMOVEit project which encourages Young People to take up senior volunteering roles both at a County Level and National Level..."

"As a result of the unique work that we carry out, we have worked closely with professionals that influence local, regional and national policy. Macmillan recently funded us to provide support to children whose parents were affected by cancer as this was not a service directly offered by them. Although this funding has now come to an end and was deemed successful we continue to work with Macmillan and challenge existing policies based on information that we continuously gather. We provide data to the Childhood Bereavement Network to enable them to gather the information they need to improve national policy and practice for bereaved families nationally."

Other key achievements:

Over 70 groups reported that they had experienced **other key achievements** since the start of their Grant Aid Agreement. Examples of these achievements include:

"... as a result of our Butterfly Campaign we gained 1080 volunteering hours from a number of local businesses who became involved in our work..."

"We developed a pilot telephone befriending service to reduce waiting lists and remove geographical boundaries, working with volunteers from Experian."

"In October 2012 following an assessment we were awarded the Approved Provider Standard from the Mentoring and Befriending Foundation which is held until October 2015."

"...we have recently produced a video promoting Nottingham Nightstop to aid with recruitment. This has been a joint project alongside film and cultural students from Nottingham Trent University..."

"Our in-house City & Guilds accredited training centre has been awarded 'Direct Claims' status....This recognises the thorough process that is followed...(and) also supports applications for additional funding for this programme..."

"We moved premises in Nov 2013 to reduce overheads and increase our sustainability, developed a drop-in advice service in Mansfield and created a new website which is more interactive and comprehensive."

General comments

As part of our **continuous review and development**, we invited groups to provide feedback on the service provided by the C&VS team. Here are some examples of the comments shared:

"We have found the Community & Voluntary Sector team very helpful and supportive."

"I have always had any queries answered promptly and found staff to be very helpful."

"I think that the visit to the projects recently undertaken by delegated officers is an excellent idea. It gives us a chance to show off our project whilst also ensuring compliance with grant terms and conditions."

"There was good communication between the CVS team and ourselves around the changes to the Monitoring Report."

"Thank you for the kind attentions of the officers in helping to resolve any issues that have arisen...they have been of great assistance."

"Payments are always received in a timely fashion which is much appreciated. It was nice to meet the officer who came on a monitoring visit in February 2014. He immediately put us at our ease as he could see we were anxious about his visit. The advice and information received by him was valuable."

"Payments were always made on time and reminders sent through regarding accounts and reports which are always really helpful."

"Very satisfied with the review and payment process."

27 January 2015**Agenda Item: 8****REPORT OF CORPORATE DIRECTOR, POLICY, PLANNING AND
CORPORATE SERVICES****WORK PROGRAMME****Purpose of the Report**

1. To consider the Committee's work programme for 2015.

Information and Advice

2. The County Council requires each committee to maintain a work programme. The work programme will assist the management of the committee's agenda, the scheduling of the committee's business and forward planning. The work programme will be updated and reviewed at each pre-agenda meeting and committee meeting. Any member of the committee is able to suggest items for possible inclusion.
3. The attached work programme has been drafted in consultation with the Chairman and Vice-Chairman, and includes items which can be anticipated at the present time. Other items will be added to the programme as they are identified.
4. As part of the transparency introduced by the new committee arrangements, committees are expected to review day to day operational decisions made by officers using their delegated powers. It is anticipated that the committee will wish to commission periodic reports on such decisions. The committee is therefore requested to identify activities on which it would like to receive reports for inclusion in the work programme. It may be that the presentations about activities in the committee's remit will help to inform this.

Other Options Considered

5. None.

Reason/s for Recommendation/s

6. To assist the committee in preparing its work programme.

Statutory and Policy Implications

7. This report has been compiled after consideration of implications in respect of finance, equal opportunities, human resources, crime and disorder, human rights, the safeguarding of

children, sustainability and the environment and those using the service and where such implications are material they are described below. Appropriate consultation has been undertaken and advice sought on these issues as required.

RECOMMENDATION/S

- 1) That the committee's work programme be noted, and consideration be given to any changes which the committee wishes to make.

Jayne Francis-Ward

Corporate Director, Policy, Planning and Corporate Services

For any enquiries about this report please contact: Democratic Services Officer -

Dawn Lawrence

Tel: 0115 977 3201

Constitutional Comments (SLB)

8. The Committee has authority to consider the matters set out in this report by virtue of its terms of reference.

Financial Comments (NS)

9. There are no financial implications arising directly from this report.

Background Papers

Except for previously published documents, which will be available elsewhere, the documents listed here will be available for inspection in accordance with Section 100D of the Local Government Act 1972.

Electoral Division(s) and Member(s) Affected

All

GRANT AID SUB-COMMITTEE

WORK PROGRAMME

<u>Report Title</u>	<u>Brief summary of agenda item</u>	<u>For Decision or Information?</u>	<u>Lead Officer</u>	<u>Report Author</u>
Jan 15				
Annual Review of Grant Aid	To share outcomes of Grant aid in 13/14	Information	Cathy Harvey	Joanne Fletcher-Nesbeth
Update on 2015/18 application process	To provide an update on the application process for 2015/18.	Information	Cathy Harvey	
Notts Arts Fund 2014/15 - 2 nd Round	To consider recommendations for the award of Arts grants	Information	Sue Cullen	Kevin Tennant
Nottingham Credit Union	To consider the award of a grant to Nottingham Credit Union	Decision	Sally Gill	Cathy Harvey
Online Funding Portal	Demonstration of a online funding portal for the Community & Voluntary Sector	Information/Decision	Cathy Harvey	Paul Roberts
Mar 15				
Recommendations for Grant Aid 2015/18	Members to decide which organisations will be awarded Grant Aid for the three years from 2015 to 2018.	Decision	Sally Gill	Cathy Harvey
May 15				
Great War Commemorative Fund	An update on the Community Commemoration fund	Information	Cathy Harvey	Neil Bettison
Innovation Fund	Consider the parameters to apply to the 5% of the Grant Aid Budget set aside for new proposals	Decision	Sally Gill	Cathy Harvey
Grant Aid Update	Update on the implementation of the three year agreements approved in March 15	Information	Cathy Harvey	Paul Roberts

