

DRAFT

2024

Nottinghamshire County Council

Net-Zero Framework



Nottinghamshire County Council's **Net-Zero Framework**

This framework has been developed for:

Local Authorities and Key Partners

Businesses and Charities

Residents and Communities

iStockTM
Credit: Khanchit

Contents

Foreword	4
Introduction	5
Building on our Progress	7
What is Net-Zero?	9
Context in Nottinghamshire	12
Climate change in Nottinghamshire	14
Working with others	16
What is Nottinghamshire doing to achieve net-zero?	17
- Communities and wellbeing	18
- Conservation and nature	19
- Economy & industry	20
- Infrastructure & energy	21
- Transport networks and mobility	22



Foreword

Our Net Zero Framework focuses on addressing the climate emergency, attracting growth opportunities within the county, and delivering upon our vision for a healthy, green, and prosperous Nottinghamshire for all.



Cllr Neil Clarke MBE

Climate Change is with us. It has and will continue to impact the lives of residents in many ways. Nottinghamshire County Council's net zero framework acknowledges this reality and sets out the ambition for achieving a net zero future for our county. We recognise our role in mitigating global emissions that drive climate change and through this process, we will play our part in keeping global temperatures within the Paris Agreement 1.5C target and support the nation in achieving the legislative target of net zero by 2050, detailed within the Climate Change Act 2008. Our statutory obligations and responsibility to residents and businesses underpin this framework, giving impetus to our ambition.

The 2023/2024 Storms Ciaran, Babet and Jocelyn are examples of weather incidents expected to become more frequent due to climate change. These storms have caused unprecedented disruption, damage and distress to Nottinghamshire's residents and businesses. The impacts remain and are likely to reoccur in future weather incidents. Adapting to the effects and implications of climate change is just as essential to our net zero ambition. We can mitigate the impact on residents' health and well-being and reduce operational business disturbances through adaptation measures. Adaptation will permit us all to continue our lives in a less disruptive and more sustainable manner. Nottinghamshire needs to be a resilient County, which can bounce back quickly to the realities of a changing climate. Through this resilience, we will demonstrate why Nottinghamshire is a place people love to live, work, and visit.

Our net zero framework recognises the importance of collaborative work to deliver this ambition for Nottinghamshire. It draws the attention of our critical partners towards a common goal, with co-benefits for all who collectively pursue it. The framework builds upon the success of the County Council's partnerships within and around Nottinghamshire, whilst laying the foundation for more collaborative work. Our collective journey to net zero will attract sustainable growth opportunities that will boost our local economy, generate jobs, and provide specialist skill development. Nottinghamshire can look to thrive under challenging circumstances while safeguarding the future of our younger generations.

It is essential to note that the net zero framework is not the Council's starting position. We are already taking steps towards net zero and will demonstrate our progress and commitment to addressing the climate emergency.



Introduction

Why Nottinghamshire needs a net-zero framework?

A Visionary Framework

This framework will consider our internal commitments, national and international law, and the views of our residents, businesses, partners, and other stakeholders to present a foundational approach to achieve a net zero Nottinghamshire.

It works in conjunction with our:

- **Internal ambition** to become a carbon neutral Council in all our activities by 2030, in line with our Carbon Reduction Plan.
- **Local commitment and responsibility** to deliver the Nottinghamshire Plan¹ and the Economic Transition Plan², which were informed by the responses of residents, businesses, and partners to the Big Notts Survey.
- **Duties and statutory obligations as a local authority**, particularly regarding our highways, our waste disposal, planning, flood management, social care, and public health.

It will also consider our:

- **Regional responsibility** to work with partners, such as the East Midlands County Combined Authority (EMCCA) and the councils across Nottinghamshire and Derbyshire, to deliver on our ambitions and acquire the co-benefits of climate action³. We are also working with the Midlands Engine to deliver upon the focus areas detailed within their Ten Point Plan for Green Growth⁴
- **National responsibility** to align our strategic vision to the UK Government's net zero 2050 strategy, and the legal targets detailed in the Climate Change Act.

- **Our global responsibility** to play our part in tackling a truly international emergency by aligning our ambitions with the United Nation's Sustainable Development Goals⁵ and the 1.5-degree target outlined in the Paris Agreement 2015.

This framework will recognise Nottinghamshire County Council's significant role in driving the positive changes needed within our communities, while acknowledging that reaching net zero is a challenge that relies on collaboration and partnership working.

Our objectives are to:

Present a positive net-zero vision for the Nottinghamshire region. One that matches our ambition to:



1 Protect and enhance our shared environment.



2 Harness the co-benefits of a low-carbon, green economy.



3 Keep our people safe and healthy.

¹Nottinghamshire Plan: <https://plan.nottinghamshire.gov.uk/media/wxvn35ce/thenottinghamshireplan2021.pdf>

²Economic Transition Plan: <https://home.nottscg.gov.uk/media/5062544/economic-transition-plan-22-25.pdf>

³For more context on the EMCCA, see: <https://www.eastmidlandsdevolution.co.uk/net-zero/>

⁴Midlands Engine Ten Point Plan for Green Growth: https://midlandsengine.org/wp-content/uploads/2021/11/Ten-Point-Plan-for-Green-Growth-in-the-Midlands-Engine_V1.pdf

⁵Growth-in-the-Midlands-Engine_V1.pdf

⁶UN Sustainable Development Goals: <https://sdgs.un.org/goals>

Complimenting the Nottinghamshire Plan

In 2021, the Nottinghamshire Plan was published, setting out the vision of a “healthy, prosperous and greener future” for the people of Nottinghamshire. This framework will outline the vision of a net-zero Nottinghamshire and demonstrate how reaching net-zero will positively impact at least these four Ambitions:

- “Protecting the environment and reducing our carbon footprint”
- “Attracting investment in infrastructure, the economy and green growth”
- “Helping our people live healthier and more independent lives”
- “Making Nottinghamshire somewhere people love to live, work and visit”.

Complimenting the Economic Transition Plan

The Economic Transition Plan demonstrates how the region can build back better from recent economic headwinds. Its people-first approach aims to respond to community and business needs by maximising funding and investment opportunities, particularly in green growth and infrastructure.

The plan is built on six themes of people, business, the visitor economy, infrastructure, digital connectivity, and place, which will connectively enable Nottinghamshire to thrive.

The commissioning of this net-zero framework directly responds to many of the aims of the Economic Transition Plan, by:

- Maximising the social and environmental value of our assets.
- Supporting businesses to grow and thrive sustainably in the context of changing markets.
- Aiding our economic transition to green and digital industries by investing in the skills and talent needed to facilitate new, high-skilled green jobs.
- Attracting investment into decarbonising technologies and infrastructure.
- Ensuring communities take-up sustainable travel behaviours and have inclusive access to greener, more efficient homes.



Building on our Progress

We declared a climate emergency in 2021 and pledged to become carbon neutral in all our activities by 2030. How we intend to do this is captured through our Carbon Reduction Plan⁶.

Key actions of this plan include:

- Improving the energy efficiency of our operational buildings.
- Reducing emissions from energy use in highways assets.
- Reducing emissions from travel in council fleet vehicles
- Reducing emissions from staff business travel in private cars.
- Address the impacts of our wider emissions through our procurement activities.
- Working with our delivery partners to set carbon reduction goals and ambitions for their services that complement the Council's commitments.

Since 2019 we have reduced our operation greenhouse gas emissions by 39%.

Across the Council, we have also delivered the following in line with our wider Corporate Environment Strategy:

- Planted over 108,000 of the 250,000 trees committed to through our Trees for Climate Programme.
- Developed and are implementing a Sustainable Procurement Strategy.
- Created the Nottinghamshire Food Charter with partners to support a local sustainable food system.
- Hosted a regional event that coincided with the Conference of the Parties 26th annual meeting (COP26) in Glasgow, raising the profile of the climate emergency we are facing and sharing regional based solutions.
- Developing and implementing a programme of support for community groups and schools on action and funding opportunities to support their net zero journey.

**OVER
50%**

More than half of the emissions cuts needed rely on people and businesses taking up low-carbon solutions.



**1
3**

Local Authorities have powers or influence over roughly a third of emissions in their local area.



Our sphere of influence

We are proud of the progress made so far, but there is much more to do. Council assets and activities make up just 2 to 5 per cent of Nottinghamshire's overall greenhouse gas emissions⁷, this net zero framework represents the first step towards an outward facing, county-wide approach. Only by working in cooperation with our partners, residents, businesses, and other key stakeholders, will we succeed in significantly reducing our area emissions.

We will need to go further and support our residents, businesses, and key stakeholders through our influencing powers as a local authority.

Our **sphere of influence** demonstrates the County Council's potential reach, which includes:

- Managing our buildings, consumption, and other assets under our direct control.
- Being a positive agent of climate impact through our procurement and commissioning.
- Using our regulatory powers to steer development and facilitate sustainable place-shaping.
- Promoting best practices and learning through innovation, demonstration, and replication.
- Providing collaborative leadership by co-ordinating with and supporting other organisations.
- Involving, engaging, and communicating with stakeholders on key climate policy aims.

Involving Engaging & Communicating:

Translating global & National climate change targets for local relevance with stakeholders to raise awareness, involving people & ideas for local solutions

Partnerships: leading, bringing people & organisations together, co-ordinating & supporting others, joining other partnership

Direct control:

Building operations, travel

Procurement and commission & commercialisation

Place Shaping: using powers to control development

Showcasing: Innovating, piloting demonstrating and sharing good practice, scaling and replicating

⁶Carbon Reduction Plan: <https://www.nottinghamshire.gov.uk/media/5080777/carbonreductionplan20222032.pdf>

⁷Local Government Association – Councillor Workbook, The local path to Net-Zero: <https://www.local.gov.uk/publications/councillor-workbook-local-path-net-zero>

What is Net-Zero?

Net-Zero as a solution.

The term, net-zero, effectively refers to an equal balance between the amount of greenhouse gas that is produced and the amount that is removed from the atmosphere. Therefore, to become 'net-zero', the UK and its constituent nations and regions must reduce their emissions by as much as possible, with any remaining emissions re-absorbed from the atmosphere, either by using nature-based solutions or new technology.

As Nottinghamshire is already experiencing the consequences of climate change, such as frequent storms and extreme flooding⁸, we must also include adaptation measures within our net-zero ambitions. These would boost community resilience and mitigate the risks to residents, businesses and our shared natural and built environment.

Net-Zero as an opportunity.

The sooner we move towards net zero, the sooner we can grasp the co-benefits of net-zero for our people, places, and environment.

It is estimated that the net zero economy is already worth over £70 billion to the UK economy and that greener jobs are much better paid⁹. With the transition to net zero potentially creating up to 1.7 million 'green collar' jobs¹⁰, who knows how many can be based here in Nottinghamshire if we act quickly?

Likewise, net zero can make our buildings, assets, and places cleaner and greener, adding aesthetic value while simultaneously protecting our landscapes and regional wildlife.

The opportunities for improving the health and wellbeing of our residents are equally as plentiful. From thermally efficient and cost-effective homes to cleaner air and increased local access to green and community spaces, we can make our shared lived environment safer and healthier. We could adapt our spaces to add greater emphasis to our wellbeing. For example, by transforming under-utilised land to places that promote both sport and refuge, and establish new areas to grow locally sourced, healthy food.

As the health and economic security of our residents is so integral to boosting local resilience to the impacts of climate change, we must ensure that net zero interventions do not exacerbate existing inequalities. Instead, they should empower all of our residents and businesses to equally access the opportunities net zero may provide.



The science tells us



The climate is rapidly changing:

We are experiencing changes to weather patterns and more frequent weather extremes. This is already resulting in some ecosystems collapsing, multiple new health hazards, and significant impacts to our society and economy.



Human activity is driving this:

Activity stemming from industrialisation in the 18th century has already led to 1.2°C of global warming from pre-industrial levels⁸. Our reliance on fossil fuels is actively contributing to the greenhouse gas emissions. These emissions continue to take our planet to unprecedented and highly dangerous levels of warming.



Urgent and decisive action is needed:

Without changes in our behaviour and consumption, and enhanced strategies of resilience and adaptation, our economy, environment, people, and places will continue to suffer. Flooding, air pollution, and heat-related illnesses will only worsen without this intervention.



Urgent and decisive action can positively transform Nottinghamshire:

Although an enormous task, acting urgently and decisively presents exciting opportunities to enhance the environment we share, grow the economy we rely on, and make our communities safer and healthier.



⁸<https://www.metoffice.gov.uk/about-us/press-office/news/weather-and-climate/2021/chance-of-temporarily-reaching-1.5-c-in-next-five-years-is-increasing>

⁹Energy & Climate Intelligence Unit – Mapping the net zero economy: <https://eci.net/analysis/reports/2023/mapping-the-uk-net-zero-economy>

¹⁰Onward Greening the Giants: https://www.ukonward.com/wp-content/uploads/2021/09/Greening-the-Giants_-_Getting-to-Zero.pdf

IPCC 2023 Report – Headline statements <https://www.ipcc.ch/report/ar6/syr/resources/spm-headline-statements/> and UN press release <https://news.un.org/en/story/2022/04/1115452>

The Potential Cobenefits of a net-zero Nottinghamshire

Achieving net zero emissions offers a wide range of co-benefits that extend beyond climate mitigation, contributing to a more sustainable, resilient, and equitable future.

A Healthier Nottinghamshire



- ✓ Cleaner air and water
- ✓ Warmer and safer homes
- ✓ Enhanced food security and nutrition
- ✓ Healthier lifestyles through active travel
- ✓ Reduced noise pollution and stress
- ✓ Enhanced mental health and wellbeing
- ✓ Reduction in other climate-related health illnesses and deaths
- ✓ Reduction in health inequalities.

A More Prosperous Nottinghamshire



- ✓ Increased inward investment
- ✓ New technologies, industries, skills and jobs
- ✓ Growth in GDP and productivity
- ✓ Enhanced Competitiveness, expanding export opportunities and establishing new markets
- ✓ Efficient practices that lower bills for households and businesses
- ✓ A self-sufficient circular economy that encourages localism
- ✓ Reduction in inequalities.

A Greener Nottinghamshire



- ✓ Reduced air and water pollution
- ✓ Preservation of natural landscapes
- ✓ Enhanced green spaces and parks
- ✓ Enhanced green spaces and parks
- ✓ Protection of wildlife
- ✓ Restoration & enhancement of healthy biodiversity levels
- ✓ Improved community engagement and environmental awareness
- ✓ contribution to aesthetic place-making.

Context in Nottinghamshire

This section details the latest trends in greenhouse gas emissions and the scale of regional inequalities in Nottinghamshire. This data underpins our ambitions for achieving net-zero and acquiring the co-benefits of climate action.

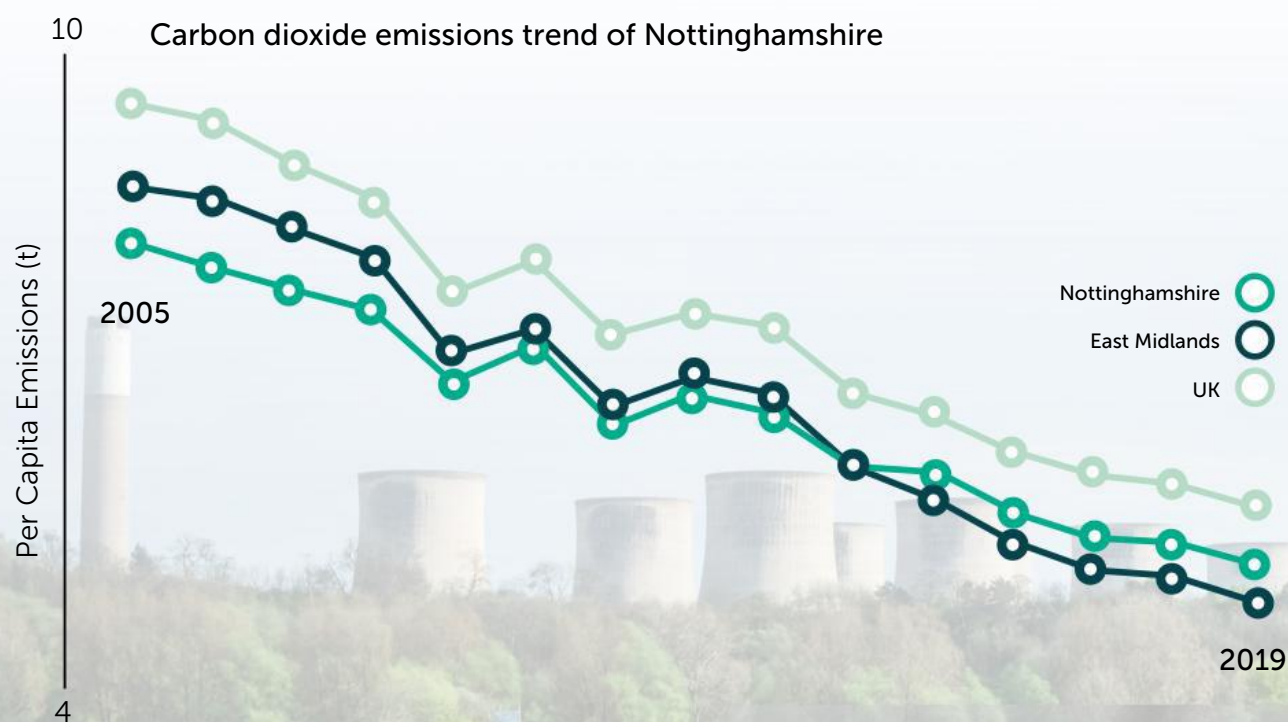
The data tells us that¹¹

Emissions are falling: CO2 emissions per capita have improved in Nottinghamshire by 35% from 2005 to 2019 compared to the UK-wide performance of 42%. This is on average a reduction of 2.5% per year.

We can do more: The devolved powers and funding granted to the East Midlands Combined County Authority will provide further opportunities to secure more funding for local net-zero projects and initiatives.

The Carbon Budget

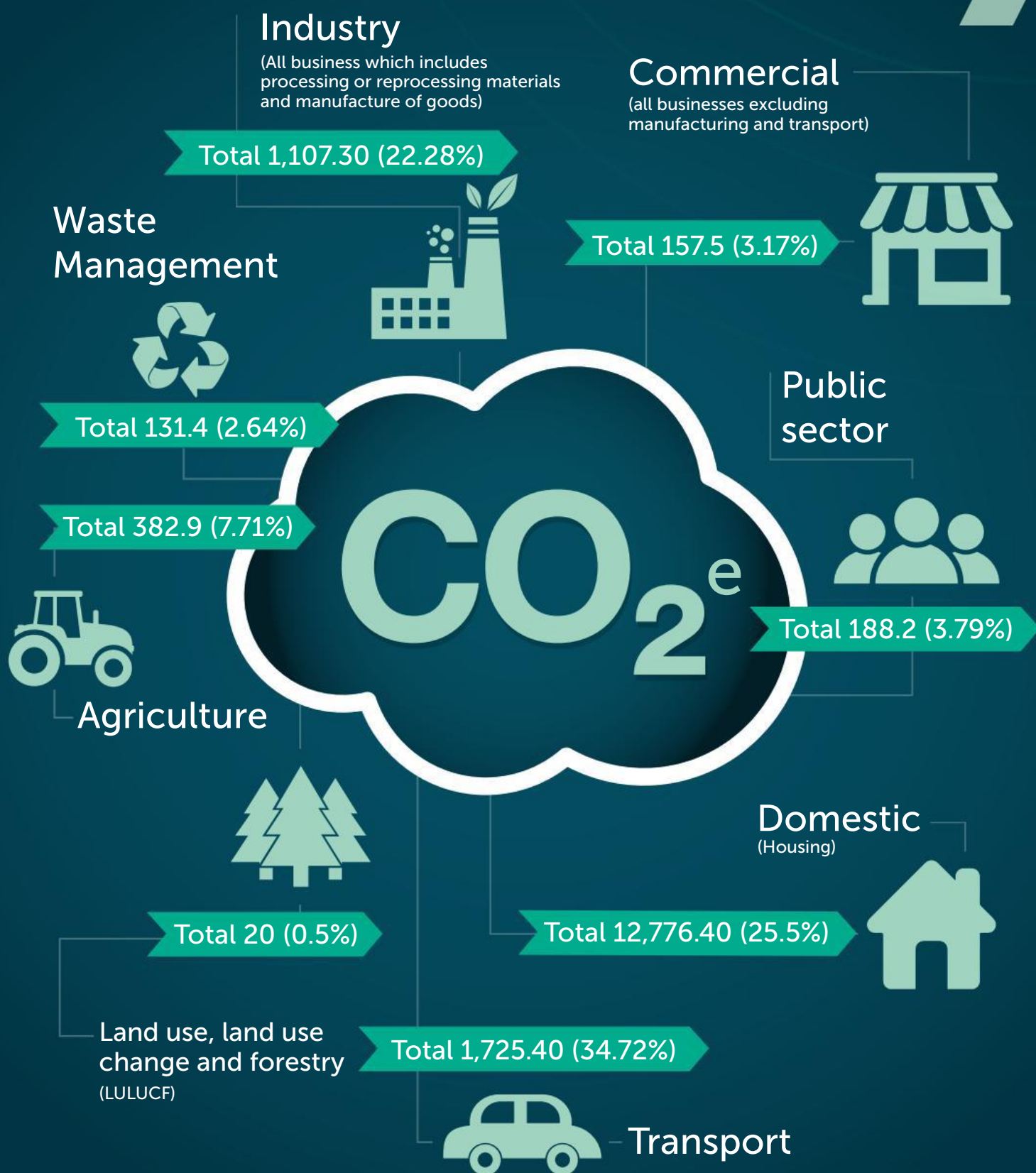
The carbon budget is used within climate change policy to help set emission reductions, ensuring fairness and effectiveness. To make our fair contribution towards pursuing the 1.5 global target with the Paris Agreement, Nottinghamshire needs to reduce its GG emissions by 13.8% per year. Quick and significant annual reductions in emissions require national and local action. Nottinghamshire are now higher than the national average, as are the East Midlands¹².



¹¹Department for Business, Energy and Industrial strategy. UK local authority and regional carbon dioxide emissions national statistics: 2005-2019 (Date of Publication 24 June 2021)

¹³adaptive-investment-report.pdf (nottinghamshire.gov.uk)

2021 data from the Department for Energy Security & net zero informs the focus of the County Council by highlighting the priorities for reducing greenhouse gas emissions across Nottinghamshire.^{13/14}



¹³Link to spreadsheet: <https://view.officeapps.live.com/op/view.aspx?src=https%3A%2F%2Fassets.publishing.service.gov.uk%2Fmedia%2F64a67b3a4dd8b3000f7fa546%2F2005-21-uk-local-authority-ghg-emissions-update-060723.xlsx&wdOrigin=BROWSELINK>

¹⁴Department for Energy Security & Net-zero. UK local authority and regional greenhouse gas emissions national statistics: 2005-2021. (Date of publication 29 June 2023).

Climate change in Nottinghamshire

Climate change is already resulting in warmer and wetter winters, hotter and drier summers, and more frequent and intense weather extremes. From the flooding caused by Storm Babet and Storm Henk in 2023, to the record-breaking heatwave and wildfires in 2022. These weather events have resulted in widespread disruption and risk to residents and businesses.

Equally, our reliance on fossil fuels continues to exacerbate numerous public health issues that net zero measures directly alleviate. When these fossil fuels are sourced beyond Britain's shorelines, we expand our collective carbon footprint through their transportation.



Environment impacts¹⁵

- **Widespread flooding:** Resulting in disruption and degradation to our natural landscapes and built environment. For example, through damage to our infrastructure and places, to the pollution of our land and rivers
- **Heatwaves, wildfires, and drought:** These can add to existing strains on our wildlife and people through soil and crop damage to subsequent food and water shortages
- **Reduced resilience:** All of this harms the potential for our ecosystems to recover by affecting the natural regulatory systems that would otherwise provide protection against extreme weather conditions and support biodiversity.



iStock™



Socioeconomic impacts¹⁶

- **Reduced growth prospects:** Economic detriment to our homes, businesses, assets, and places, alongside disruption to travel and supply chains. This can result in a loss of income and a drop in productivity levels. All of this could have a negative impact on Nottinghamshire's ability to attract investment and grow its economy
- **Worsening personal economic security:** Our over-dependency on fossil fuels and the international market has exacerbated recent inflationary pressures on the cost of fuel, food, and energy. These pressures affect our residents and businesses by making the cost-of-living crisis deeper and more difficult to recover from. Likewise, disruption and damage to our economy and places may affect the labour market through unemployment and displacement.
- **Pressure on the state:** Economic pressures add to the significant burden already facing our public services, including health, care, and Government in general. The less prepared we are to mitigate and adapt to climate change, the higher the financial burden will be on our communities and local businesses.



Health and Wellbeing impacts¹⁷

- **The physical and mental health of residents:** Through injuries, trauma, cold- and heat-related deaths, to health hazards caused by a reliance on fossil fuels – such as asthma and cardiovascular disease. Infants and children are particularly vulnerable to the health impacts of poor air quality related to fossil fuel vehicle use. Previous estimates indicate that around 450 deaths per year in Nottinghamshire are attributable to human-made air pollution¹⁸.
- **Services and supplies:** From reduced pollination levels affecting food availability and food inflation, to the livelihood loss and supply chain disruption caused by damaged crop yields. Climate change can add to new pressures facing our health and care services, including exacerbating poverty and inequality levels.
- **Poverty and inequality:** Climate change is set to exacerbate existing poverty and inequality levels, with those belonging to more vulnerable groups in our society being less able to adapt to changing circumstances or remain resilient under financial strain. Such groups often have lower carbon footprints themselves but are worst affected by the carbon emissions of others. Climate change on a global scale may lead to conflict and forced

¹⁵See for more environmental impacts: <https://www.nottinghamshire.gov.uk/media/zatauwcmm/adaptive-investment-report.pdf>

¹⁶See for more socioeconomic impacts: <https://www.lse.ac.uk/granthaminstitute/publication/what-will-climate-change-cost-the-uk/> and <https://www.bankofengland.co.uk/quarterly-bulletin/2022/2022-q4/climate-change-possible-macroeconomic-implications>

¹⁷See for more health and wellbeing impacts: <https://assets.publishing.service.gov.uk/media/659ff6a93308d200131f8e78/HECC-report-2023-overview.pdf>

¹⁸Nottingham and Nottinghamshire Air Quality Strategy: <https://committee.nottinghamcity.gov.uk/documents/s107973/Notts%20AQ%20Strategy%202020%20FINALv1.0.pdf>

Working with others

This Net-Zero Framework provides a joint-up, top-level approach detailing the County Council's significant role in spearheading the transition to a net-zero Nottinghamshire.

The County Council cannot accomplish this in isolation. Tackling the effects and impacts of climate change requires collaboration with our key partners within and surrounding Nottinghamshire. Only through collaboration can we maximise the co-benefits of climate action.

This document is the product of the joint effort of our climate change, public health, and economic development teams, alongside the continued engagement with the County Council's key partners and stakeholders. Our collaborative approach underpins this framework.

This framework has been created for:

Local Authorities and Key Partners

This framework aims to foster collaboration and alignment among local authorities and their key partners, allowing for the sharing of best practices, resources, and expertise in achieving our collective net-zero ambition.

Looking ahead, the establishment of the East Midlands County Combined Authority provides an opportunity for all local authorities across Nottinghamshire and Derbyshire to advance our cooperation towards achieving our net-zero ambition. EMCCA is set to bring in around £4 billion of funding for the region, alongside new devolved powers for transport, skills and adult education, housing, the environment, and economic development¹⁸.

Businesses and Charities

The transition to a net-zero economy requires public-private cooperation to encourage innovation and attract inward investment. Our region's pioneering private sector contributes so much to our collective prosperity. We must continue to work in partnership with our businesses to reap the economic opportunities

of advancements and investments in green technologies and sustainability-focused industries. Nottinghamshire's community and voluntary sector plays a fundamental role in advocating for and advancing positive social and environmental change.

They provide the ground level knowledge that informs and shapes County Council policy.

Third sector organisations are also vital towards strengthening the social fabric in our local communities. This is key to supporting those most detached from the evolving labour market, and the health of those requiring the most support.

Residents and communities

The framework demonstrates our recognition of the climate emergency and its impacts on Nottinghamshire's communities and residents. It also reflects our commitment to mitigating emissions and adapting to climate effects. It communicates the co-benefits of climate action to our communities and aspires to create a sense of empowerment among residents to become a part of our shared journey and vision.

See EMCCA press release: <https://www.eastmidlandsdevolution.co.uk/news/councils-give-green-light-to-4-billion-east-midlands-devolution-deal/>

What is Nottinghamshire doing to achieve Net-Zero?

The framework is our step forward to achieving net zero across Nottinghamshire. Although it lays the foundational stone upon which the County Council's approach and plans will be built, it is essential to recognise the progress and success already contributing to achieving our net zero ambition and the vision for a healthy, prosperous, and green Nottinghamshire.

What are the key themes?

The five themes the County Council will lead with are:

- Communities and wellbeing
- Conservation and nature
- Economy and industry
- Infrastructure and energy
- Transport networks and mobility

These themes encompass the overarching reach of net zero and encapsulate the ambitions articulated within The Nottinghamshire Plan. They demonstrate our clear focus for net zero to critical partners, residents, and businesses. By incorporating these themes, we hope our stakeholders can see they are represented and identify how they can benefit or contribute.





Theme 1

Communities and wellbeing

Nottinghamshire's strength lies in its communities. We work with communities to protect and improve health and wellbeing, by addressing health inequalities and the impacts of the climate crisis. Strong and healthy communities mean residents can continue to live, work, and grow.

Clean air is essential for good health, environment, and climate. We will work to make positive changes which can also have beneficial effects on travel, being active, reducing traffic and noise, and enabling people to enjoy green spaces. This will be delivered through the Air Quality Strategy for Nottingham and Nottinghamshire 2020-2030¹⁹ and the Making Our Move Strategy¹⁹.

Developing a new Joint Strategic Needs Assessment (JSNA) will increase understanding of what the main health protection risks are that climate change poses to health in Nottinghamshire and their likely impact on vulnerable populations and health inequalities.

The County Council is part of the 'Sustainable Food Places' national programme and drives innovation for sustainable and healthy food practices. The Nottinghamshire Food Charter focuses on sustainable food to tackle climate change.

We work with a range of our services, such as school catering and energy management, to help reduce emissions from schools. We are also actively involved in working with local NHS organisations to develop and deliver their net zero plans.

The County Council-backed Local Authorities Energy Partnership²⁰ is engaging with homeowners whose properties are hard to heat and hard to reach, to provide surveys identifying energy-efficiency improvements and support with finding trusted traders to deliver the work. We are also working with Nottinghamshire's District and Borough councils and the Midlands Net Zero Hub, in the delivery of government schemes to address fuel poverty through retrofitting housing.

¹⁹ Making Our Move Strategy:
<https://makingourmove.org.uk/about/making-our-move/>
²⁰ Nottingham Energy Partnership:
<https://www.nottenergy.com/>



iStock™
Credit: Pheelings Media



Theme 2

Conservation and nature

Preserving and enhancing Nottinghamshire's natural environment and historical landmarks is crucial.

Our natural and historical treasures are a source of pride and provide spaces to relax, explore, learn and allow nature and people to thrive. Our country parks and historical buildings are a priority for improving the local environment and increasing biodiversity.

Through the Home Energy Advice Team events, we are promoting traditional, low-carbon technologies and providing training for owners, building managers and students in biobased-retrofit installations and carbon-neutral lime technologies at live-site heritage projects.

Nottinghamshire's Local Nature Recovery Strategy will form the basis for delivering the governments legally binding commitments to improve nature across England. We are

identifying sites for tree planting to tackle climate change, increase biodiversity, and expand woodland. The Trees for Climate programme, and schemes such as Miner2Major Landscape Partnership²¹ and Countryside Stewardship, will create semi-woodland landscapes and improve habitats for wildlife. Our provision of Historic Environment Record Information and advice supports the implementation of such environmental projects.

We are delivering natural flood management projects to reduce the risk of flooding across Nottinghamshire through natural processes. As an example, The Burton Joyce project has installed leaky barriers and appropriate planting to create a stream wood introduction. These barriers will reduce high flows while increasing biodiversity through new and advance habitat for wildlife.

²¹ Miner2Major Partnership: <https://miner2major.nottinghamshire.gov.uk/>

Theme 3



Economy and industry

We are focused on Green Growth to achieve the prosperity and sustainability needs of Nottinghamshire. Investment into place, digital access, infrastructure, visitor economy, business growth, skills and talent are all key drivers for this within Nottinghamshire. Working with private, public and third sector to regenerate our local areas, grow our existing businesses and visitor economy, attract capital for sustainable development, digital innovations, and infrastructure, and to attract and retain local talent are all key to achieving economic growth.

Our working partnerships are committed to fostering collaboration and knowledge sharing to drive green industries and economic growth, facilitate sustainable developments, and encourage synergy between the private, public and charity third sectors.

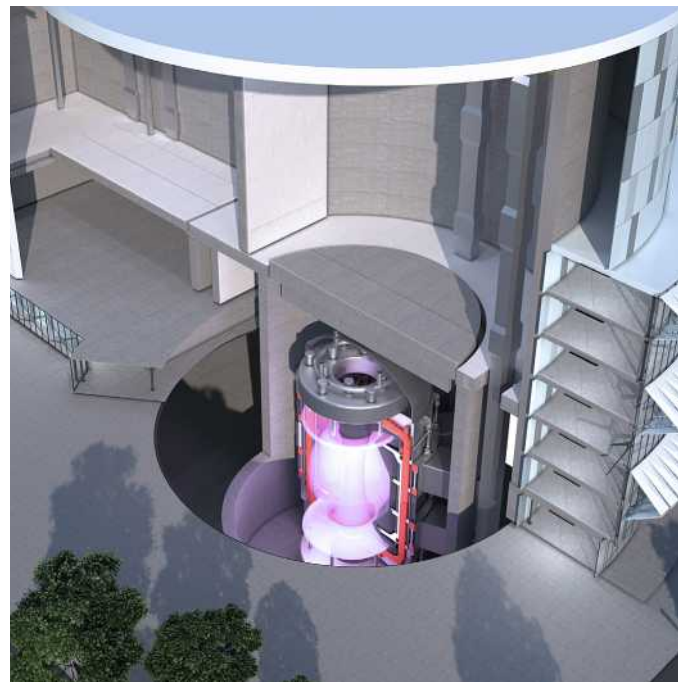
We provide comprehensive support through one-to-one business growth advice and tailored services, offering guidance in business planning, strategy, and marketing, ensuring businesses are well-positioned for sustainable innovation and economic growth.

We assist with funding options to facilitate the implementation of green technologies and eco-friendly practices, while signposting and supporting businesses to navigate regulations and compliance. Furthermore, improvements to our procurement service, have included environmental and climate measures when acquiring goods and services from the market.

Through the national Project Gigabit rollout, Nottinghamshire will deliver high-speed and reliable connectivity to rural communities and businesses that will meet their connectivity needs for decades to come reducing carbon emissions through enabling differing industries to benefit from technology innovations and associated flexible working options.

Furthermore, the economic partnership prioritises skills development in conjunction with education, aiming to enhance the overall workforce and provide employment opportunities for a green economy and place.

Finally, the County Council in its statutory role as the minerals and waste planning authority will seek to ensure that minerals and waste developments minimise their impacts on climate change by considering location, design and operation to help reduce greenhouse gas emissions and move towards a low-carbon economy.



²² Inward Investment for Nottinghamshire | Nottinghamshire County Council



Theme 4

Infrastructure and energy

Nottinghamshire requires sufficient resilience for a changing climate, which requires aligned investments into varied infrastructures to enable our places to address our energy security, transport decarbonisation, biodiversity, green homes, and flood resilience challenges. Adapting our places to the effects of climate change and reducing the impact to residents and businesses, while mitigating emissions, remains critical to deliver better outcomes for our environment, economy, and people.

Climate change and the built environment are a key focus. Updating the Nottinghamshire spatial planning and health framework will ensure planning and health practitioners are critical in considerations for climate change in-built environment assessments and decisions. The framework includes a rapid health impact assessment matrix which includes indicators such as minimising the use of resources, and sustainable designs.

As a regional partner to the local area energy planning, we will evaluate and utilise a data-driven, whole system approach on how to decarbonise the entire energy system at least cost, across electricity, gas, heat and transport,

down the supply chains from energy generation to distribution and consumption in homes and businesses, and across systems.

As a lead local flood authority, we are taking action to manage local flood risks and improve the resilience of the county in response to the increasing frequency and devastating impacts of flooding on communities. This includes developing and delivering flood risk schemes, collaborating with stakeholders, fostering community resilience, and adapting action plans to future climate changes.

We are also focused on identifying greener, less flood-susceptible alternatives to current energy and biodiversity infrastructure and to promote more sustainable and low-carbon building skills.

We are committed to reducing household waste and increasing recycling. The 'simpler recycling' proposals contained within England's resources and waste strategy aim to make recycling easier for residents and businesses, resulting in more recycling and reuse and less waste disposal²³ Separate food disposal collections for all households will support energy and fuel generation through waste while reducing greenhouse gas emissions.

²³ See the full response from the UK Government to consultation outcomes here: <https://www.gov.uk/government/consultations/consistency-in-household-and-business-recycling-in-england/outcome/government-response>



Theme 5

Transport networks and mobility

Strong transport networks that offer logistical choice to residents and businesses are crucial for inclusive and low carbon mobility. Like the rest of the UK, the transport industry remains a significant contributor to emissions in Nottinghamshire.


We are prioritising sustainable and healthy travel options to reduce emissions. Through expanding and improving public transport, walking and cycling, we hope to improve local transport connections, to make journeys easier while reducing emissions and congestion.

Major schemes to improve roads such as the A614 and A46 will contribute to the reduction of emissions and improve air quality by reducing congestion.

In partnership with the EMCCA, we and the other constituent transport authorities, are developing a local transport plan for the EMCCA region. The plan aims to improve and integrate transport options across Nottinghamshire, Derbyshire, Derby City and Nottingham City, whilst encouraging low-emission and active transport solutions to support local net-zero ambitions.

Nottinghamshire is also committed to delivery of public electric vehicle infrastructure. The development of public on-street electric vehicle (EV) charging infrastructure will help accelerate/facilitate the take-up of EVs. We are working with several authorities across the East Midlands to secure funding for the provision and delivery of a joined-up local and regional comprehensive EV charging network.





We will utilise our **sphere of influence** and partnership-working to deliver five key ambitions built upon the County Council's key themes:

- **Invest in healthy and strong communities.**
- **Invest in nature and heritage**
- **Invest in green economies.**
- **Invest in sustainable energy and infrastructure.**
- **Invest in clean transportation**

Our themes underpin each key area and align with several United Nations' Sustainable Development Goals.



Invest in healthy and strong communities

We will invest in the building blocks of health, allowing our communities to live longer and happier lives. We will empower our communities with the tools and knowledge to harness the benefits of sustainable practices, ensuring equity of approach so that the most vulnerable and in-need groups within our communities are supported to benefit from Net Zero and adapt to climate change impacts.

3 GOOD HEALTH AND WELL-BEING



Supporting initiatives which encourage healthy, active, and low-carbon lifestyles.

- Restore and protect Nottinghamshire's active greenspaces, such as parks and sporting facilities; ensuring access to these are inclusive and environmentally positive spaces.
- Continue to create safe and accessible communities for all.
- Make it easier for residents and our commercial businesses to reduce, reuse and recycle.

10 REDUCED INEQUALITIES



Improve the energy-efficiency and year-round thermal comfort of our communities.

- Continue our energy security home retrofitting and fuel poverty programme.
- Engage with the communities to take up energy efficient practices.
- Support the self-delivery of community energy generation

Improve access to local, sustainable, and healthy food options.

- Continue to support the delivery of the Nottinghamshire Food Charter.
- Support the work with farmers and landowners to encourage low-carbon practices that produce local, homegrown, farm-to-fork produce.



Invest in nature and heritage

We place environmental protection at the forefront of our ambition to address climate change. We will harness the potential of nature to develop solutions that will help and adapt to climate impacts. This will aim to protect our ecosystems and restore biodiversity levels, and enhance and sustain Nottinghamshire's beautiful green spaces, heritage and landscapes for future generations to enjoy.



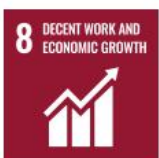
Restore landscapes, ecosystems, biodiversity, heritage assets and plan and implement nature recovery networks.

- Prioritise biodiversity net-gain in future developments.
- Prioritise the delivery of Nottinghamshire's Local Nature Recovery Strategy.
- Continue to protect our wildlife habitats, green spaces, and natural landscapes.
- Conserve and enhance Nottinghamshire's historic environment.
- Increase local people's skills towards nature and conservation and provide more opportunities for engagement with nature and heritage assets.



Invest in green economies

We plan to continue to invest in economic development while preserving natural assets and services that support our well-being and people, industries, nature, climate, and places to thrive. We will continue supporting Nottinghamshire businesses to develop and grow the skills they need for a greener future. Working with our partners, we will transform our digital industries and visitor economy to help new and more inclusive ways of accessing the best of Nottinghamshire. The place will be at the heart of everything we do, and in partnership with private, public and third sectors, our collective assets and infrastructure investments will have a tangible impact on our economy, environment, people, and places.



Modernise our economy to be resilient to the impact of climate.

- Endorse jobs and skills with a stronger positive impact on our environment.
- Prioritise business development focussed on climate positive industries, modern method construction, digital innovations, and circular economy principles.
- Ensure fair and equal access for all to Nottinghamshire, including high streets and major visitor attractions, on sustainable transport.



Explore new and evolving technologies and approaches.

- Champion Nottinghamshire as a leader of digital technologies research, and innovation.
- Enable positive climate impacts and effective use of the newest technologies.
- Procure services and goods for climate and social value benefits.
- Explore investment into green finance and related social impact opportunities.





Invest in sustainable energy and infrastructure

We must continue to prioritise low-carbon and climate-resilient infrastructure for the future, keeping abreast of new and emerging technologies, exploring their adoptability and potential to reduce our regional greenhouse gas emissions and pollution levels. We will improve our energy security and move away from reliance on non-renewable, high carbon emitting fuel sources.



Embed a holistic approach that prioritises sustainable infrastructure.

- Ensure that our planning and infrastructure of all types prioritises climate considerations.
- Adopt a holistic and needs based approach to investment in the full range of infrastructure opportunities.
- Increase the scale and impact of nature-based solutions to address local flooding.
- Support Local Planning Authorities, landowners, and developers to implement new housing development standards at pace and scale.



Assist in the access to affordable, green, and clean energy for all.

- Continue to improve the energy efficiency and sustainability of Nottinghamshire assets.
- Prioritise the local area energy planning for Nottinghamshire.
- Support the generation and provision of appropriate renewable energy across the county.



Invest in clean transportation

We will continue to promote low-carbon methods of transportation for public and private use, while improving connectivity and access to those with the greatest need. We will endorse alternative fuels and advanced technologies to create a more efficient and inclusive transport system.



Improve the impact of our local travel and transport.

- Encouraging our local people to adopt active travel.
- Continue to promote the use and availability of public transport.
- Continue to deliver the local electric vehicle Infrastructure strategy across the County.
- Continue to deliver the local bus improvement strategy across the County.
- Continue to develop the Local Transport Plan with Nottingham City, Derbyshire, and Derby City
- Support projects and initiatives that increase independence and reduce reliance on fossil fuel travel modes.
- Ensure our transport is well-integrated to all so that public transport is the overall first choice for our residents and businesses.
- Continue to improve our low carbon transport networks within rural communities.





Healthy *Prosperous* *Green*



**Nottinghamshire
County Council**

W nottinghamshire.gov.uk
T 0300 500 80 80

 facebook.com/nottinghamshire

 [@NottsCC](https://twitter.com/NottsCC)