

Service Director
South Nottinghamshire
Caroline Baria

Subject to Member Approval

Programme Manager
Social Care & Health
Integration
Nicola Peace
(Temporary)

Group Manager
Older Adults
Broxtowe, Gedling & Rushcliffe
Mark McCall

Team Manager
Rushcliffe
2 fte

Team Manager
Broxtowe
2 fte

Team Manager
Managed Homecare Services
0.5fte

Team Manager
QMC
1.5 fte

Team Manager
Reviewing Team South
1fte
(Temporary)

Group Manager
Younger Adults
Broxtowe, Gedling & Rushcliffe
Wendy Adcock

Team Manager
Physical Disability Broxtowe &
Rushcliffe
1 fte

Team Manager
Physical Disability Gedling
0.5 fte

Team Manager
CLDT Broxtowe
1 fte

Team Manager
CLDT Gedling
1fte

Team Manager
CLDT Rushcliffe
1fte

Team Manager
Mental Health Broxtowe &
Rushcliffe
1 fte

Team Manager
Mental Health Gedling
0.5 fte

Group Manager
Older Adults
Broxtowe, Gedling & Rushcliffe
Phil Teall

Team Manager
Gedling
1.8 fte

Team Manager
City Hospital
1fte

Team Manager
Lings Bar
0.5 fte

Team Manager
Intermediate Care
1fte

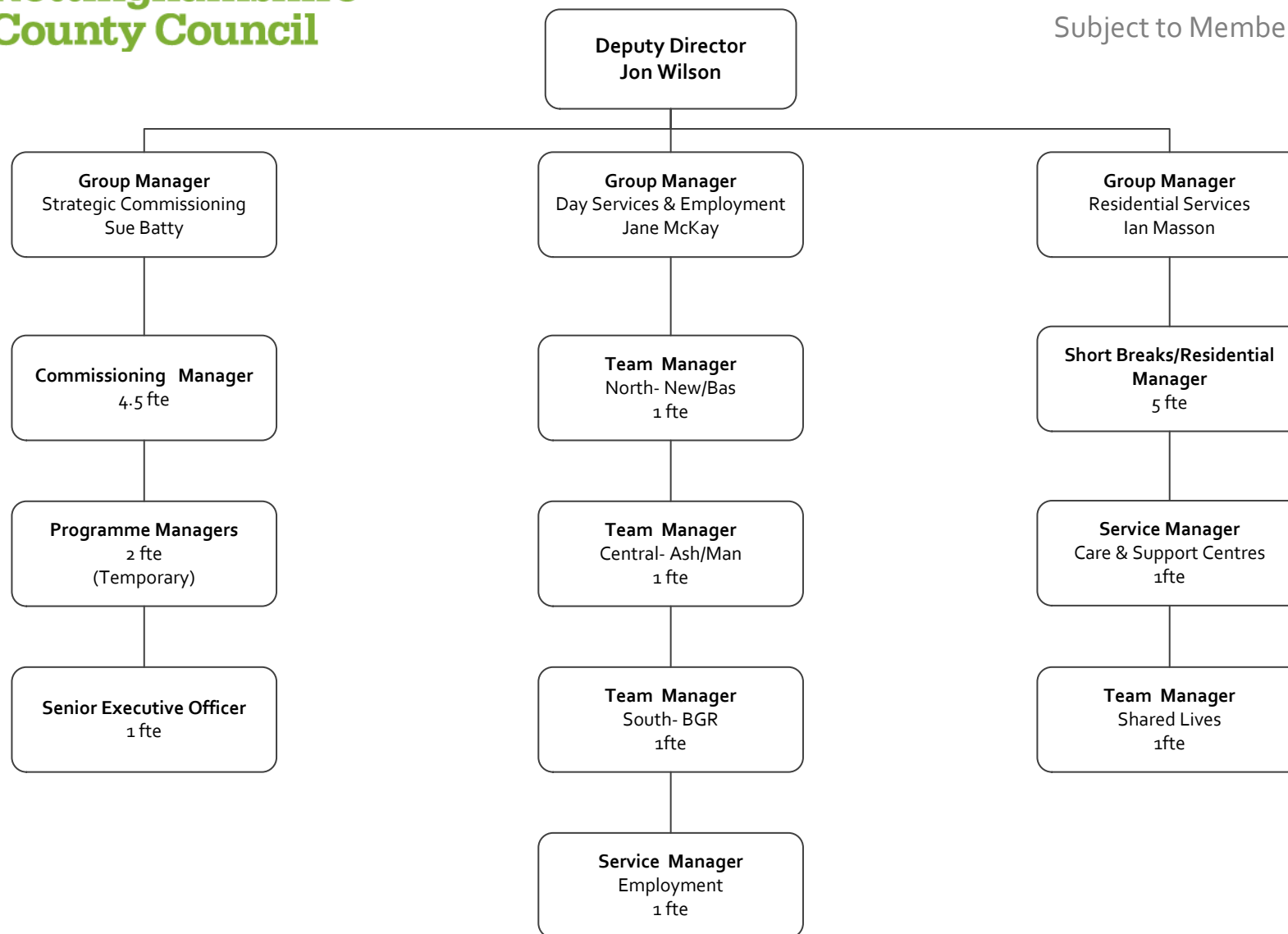
Team Manager
START
2 fte

Team Manager
Countywide ADVIS
1fte

Programme Manager
Care Bill
Jane North
(Temporary)

Programme Team
TBC

ASCH&PP
Management
Structure



Subject to Member Approval