

Sexual Health

Jonathan Gribbin and Sally Handley
26 November 2014



**Nottinghamshire
County Council**

Session outline

1. What is good sexual health?
2. Public health significance of sexual health
3. Health & Wellbeing Board priority
4. Who has responsibility for commissioning which sexual health services?
5. Council contracts & key gaps
6. Potential impact of disinvestment
7. Top line messages from the paper

What is Sexual Health and why is it important?

WHO definition of Sexual Health

A state of physical, mental and social well-being in relation to sexuality.

It requires **a positive and respectful approach** to sexuality and sexual relationships, as well as the possibility of having pleasurable and safe sexual experiences, free of coercion, discrimination and violence.

Good Sexual Health is

- About well-being, not merely the absence of disease
- Involves respect, safety and freedom from discrimination and violence
- Dependent on the fulfillment of certain human rights
- Relevant throughout the individual's lifespan, not only to those in the reproductive years, but also to the young and the elderly
- Expressed through diverse sexualities and forms of sexual expression
- Critically influenced by gender norms, roles, expectations and power dynamics

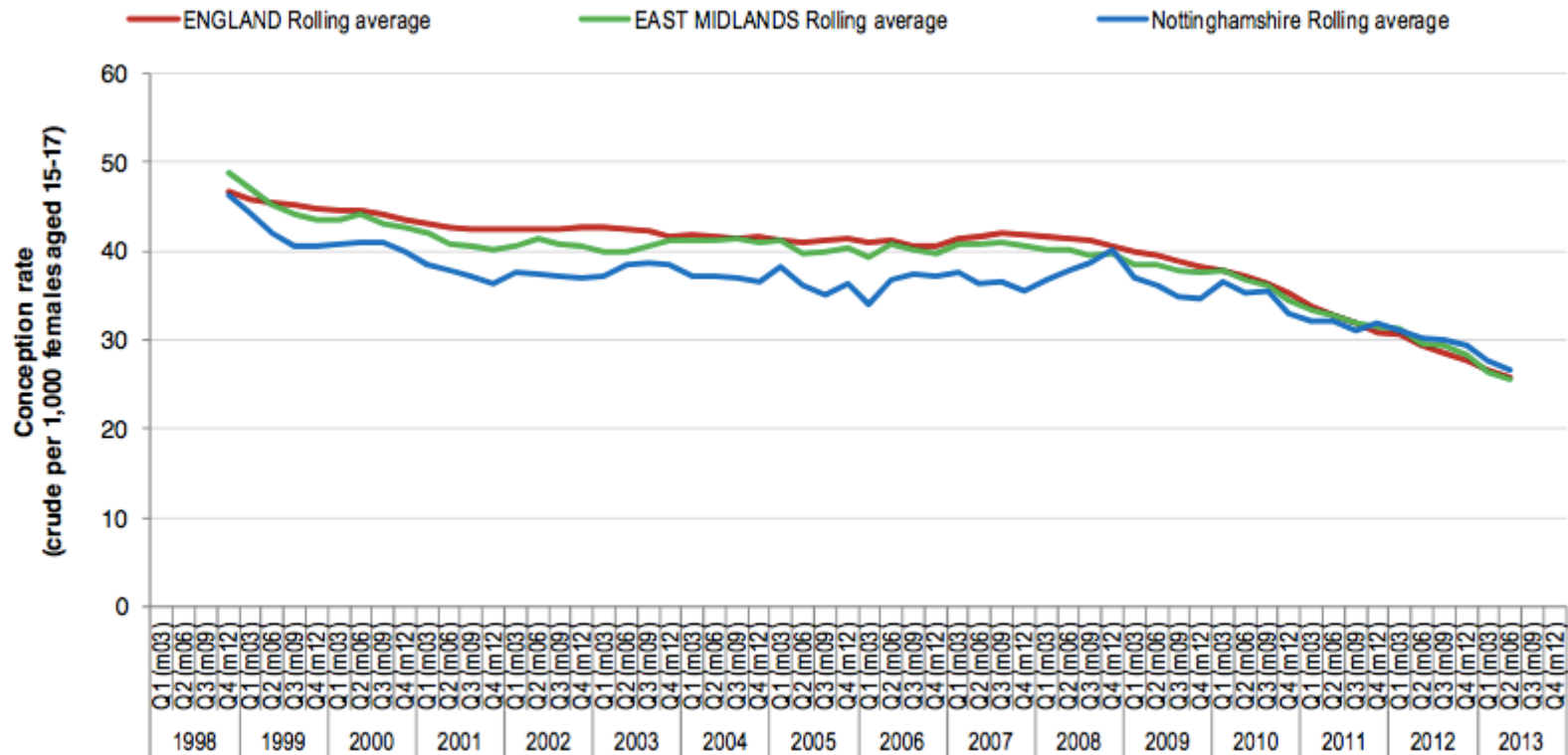
The relationship between sexual ill health, poverty and social exclusion

In Nottinghamshire the highest burden of sexually related ill-health is borne by groups who often experience other inequalities in health, including

- gay men
- teenagers
- young adults
- black and minority ethnic groups
- and people living in more deprived communities

Good Sexual Health can be measured through continued progress to further reduce **teenage conceptions** ...

Quarterly teenage conception rates with Regional and National comparators (four quarter rolling average) 1998 Q1 (m03) to 2013 Q2 (m06)



Source: ONS 2014

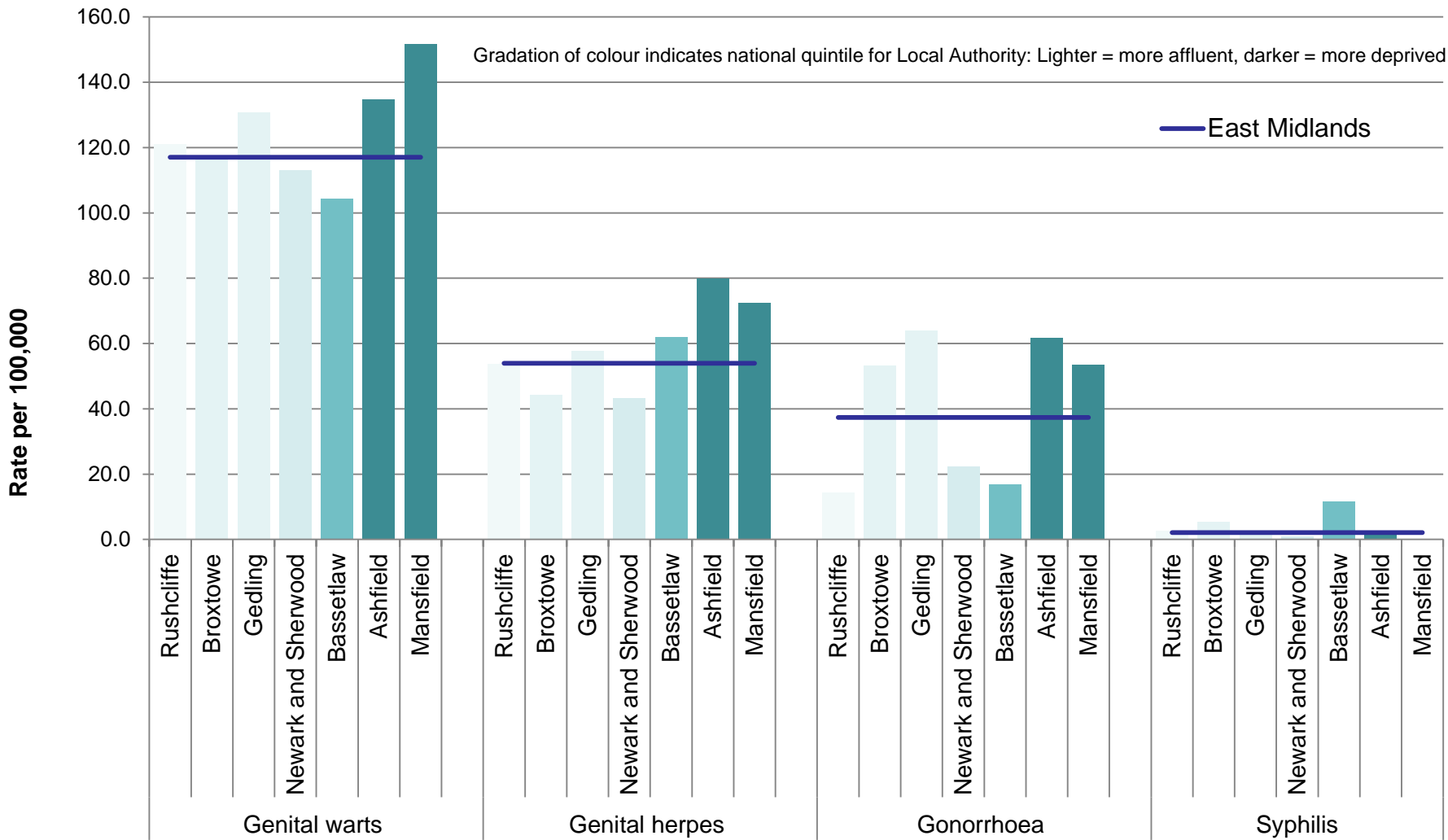
Teenage conceptions rates

Nottinghamshire 2012 29.4 per 1,000 (females aged 15-17)

East Midlands 2012 28.3 per 1,000 (females aged 15-17)

England average 2012 27.7 per 1,000 (females aged 15-17)

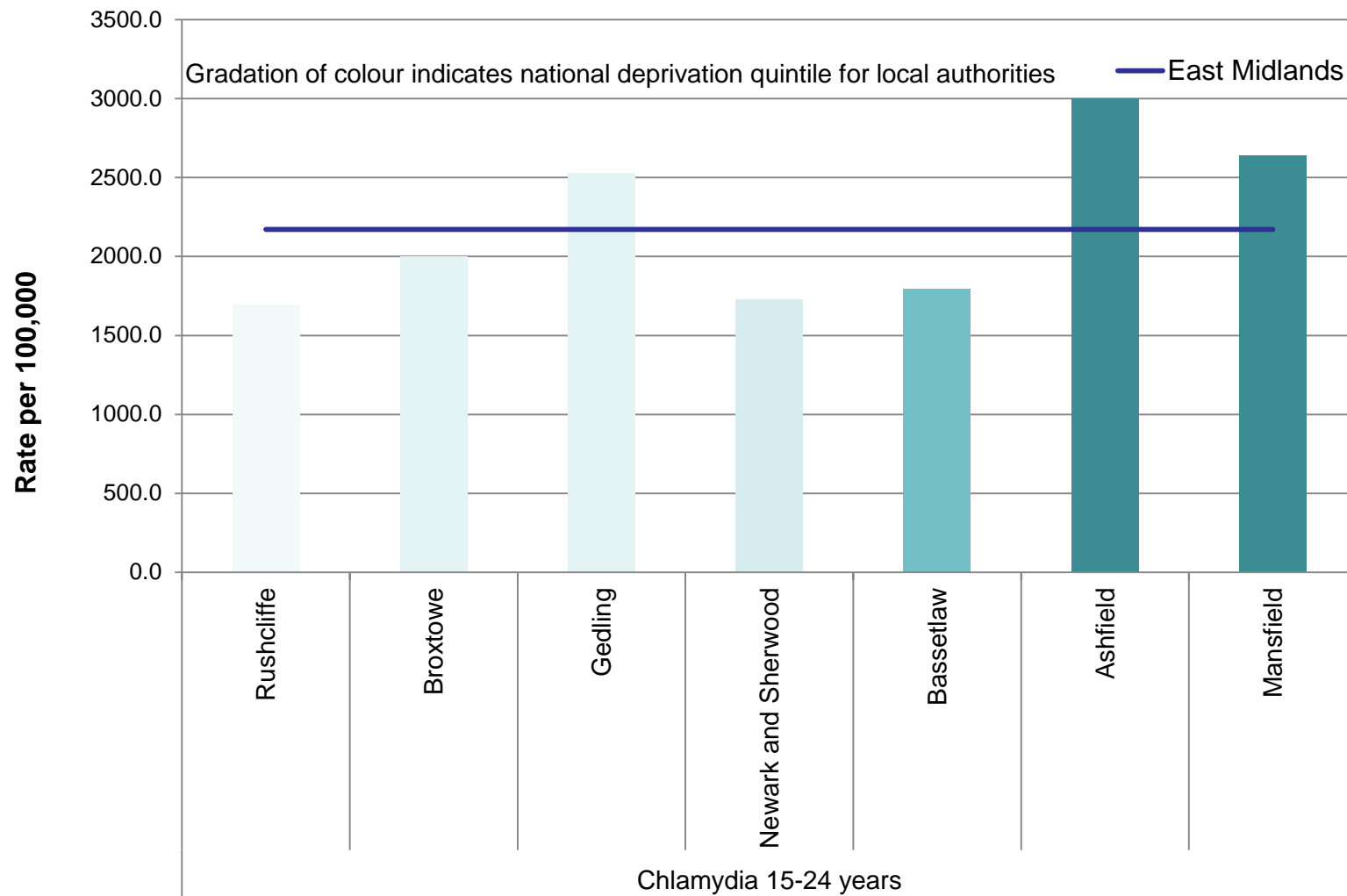
Good Sexual Health can also be measured through rates of STIs ...**with rates in Nottinghamshire higher than the East Midlands and national average...**



STI rates – Nottinghamshire Districts



**Nottinghamshire
County Council**



STI rates – Nottinghamshire Districts

The devastating impact of late HIV diagnosis in Nottinghamshire

- Those diagnosed with HIV late have a ten-fold increased risk of death **in the first year** of diagnosis compared to those diagnosed early,
- and over the last decade 81% of the 2000 AIDS-related deaths in England and Wales were attributable to late diagnosis
- Half of all diagnoses of HIV in Nottinghamshire are late diagnoses (**50.8%, n= 31, 2011 to 2013**)

Investment in Sexual Health services saves money

- For every £1 spent on contraception £11 is saved in health and social care costs
- On a national basis, improved access to contraceptive services would save the NHS and public sector between £3.7 - £5 billion over 8 years
- The provision of contraception saved the NHS £5.7 billion in healthcare costs that would have had to be paid if no contraception at all was provided
- Early testing and diagnosis of HIV (compared to late) reduces treatment costs by 50%. Associated social care costs are also averted

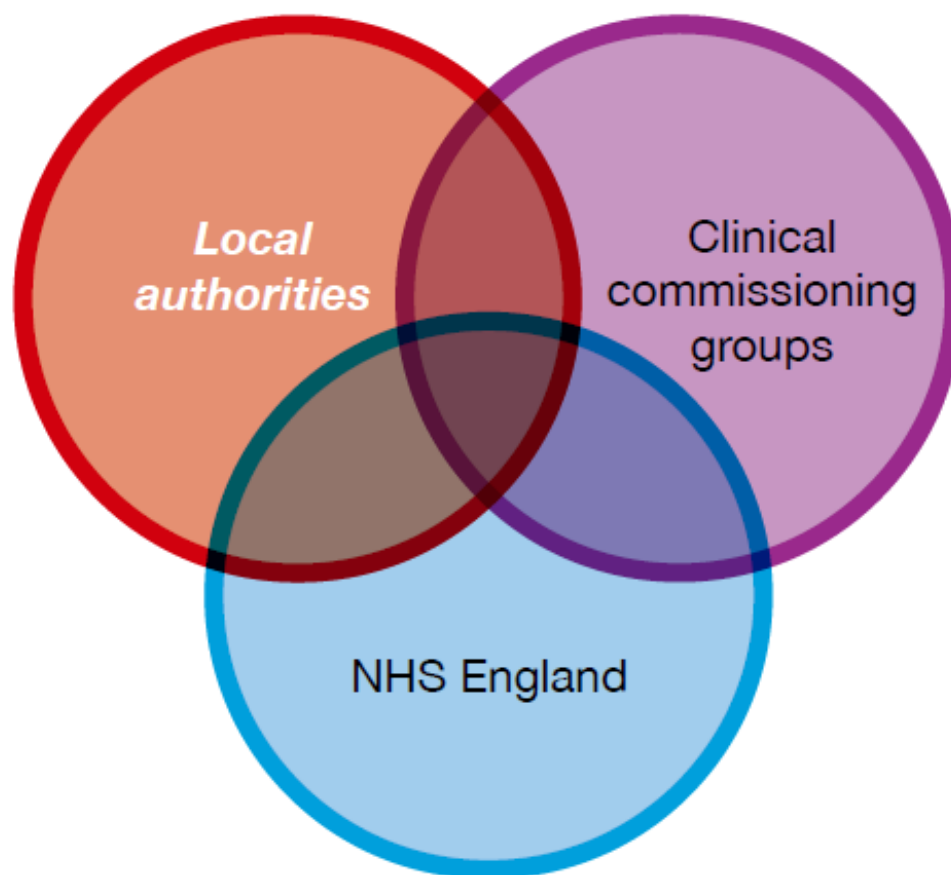
HWB priority for good Sexual Health in Nottinghamshire

The reduction of sexually transmitted disease and unplanned pregnancy



Nottinghamshire
County Council

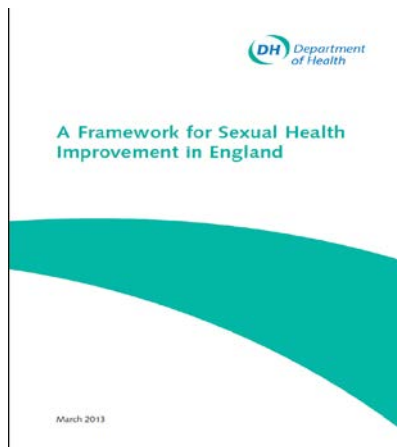
The responsibility for commissioning SH is shared



Local Authorities have commissioning responsibility for



Confidential, open access to sexual health services for STIs and contraception, as well as access to all methods of contraception



<http://www.legislation.gov.uk/ukdsi/2012/9780111531679/contents>

Nottinghamshire summary of Local Authority Commissioned Services –Sexual Health

Type of Service	Provider
CaSH Service	
South County Community CaSH Clinics	Nottingham University Hospitals
Central Nottinghamshire Community CaSH	Sherwood Forest Hospitals Foundation Trust
Bassetlaw CaSH Clinics	Doncaster and Bassetlaw Hospital
GU Med	
City Hospital	Nottingham University Hospitals
KMH and Newark Hospital	Sherwood Forest Hospitals Foundation Trust
Retford Primary care Centre and Reyton Street	Doncaster and Bassetlaw Hospital
CaSH in the city!	
Health Shop Sexual Health Service Accessed by county SUs positive engagement with people higher sexual health risks	Nottinghamshire Healthcare Trust (NHT)
LARC Long Acting Reversible Contraception	
Intra Uterine Contraceptive Devices	LCPHS – GPs and in CaSH
Contraceptive Implants	
Emergency Contraception	
Emergency Hormonal Contraception	Community Pharmacies and in CaSH
HIV Prevention and Testing	
Outreach advice and Point of Care Testing (POCT)	Terence Higgins Trust
Health Promotiona and Advice Young People	
SEXions – *only commissioned in Central Nottinghamshire	Sherwood Forest Hospitals Foundation Trust
C Card Scheme	
Available at various locations across the county	
Key:: CaSH – Contraceptive and Sexual health Service GU Med – Genito-urinary Medicine (sometimes referred GUM) GPs – General Practitioners	



Working with a range of providers to
ensure Sexual Health Services are
accessible

What we know about current service gaps ...

- **Move to Commissioning Integrated Sexual Health Services** in Central and North Nottinghamshire
- Review coverage for **Chlamydia Screening**
- **Lack of Sexual Health promotion** in the south of the county
- **Targeting of Sexual Health Promotion to the most vulnerable**

Potential impact disinvestment

Human costs

- Increase in STIs, HIV and unintended pregnancies
- Personal costs of unwittingly transmitting HIV
- People suffer avoidable infections, illness, long term and life threatening conditions
- Premature mortality from late diagnosis of HIV

Societal cost

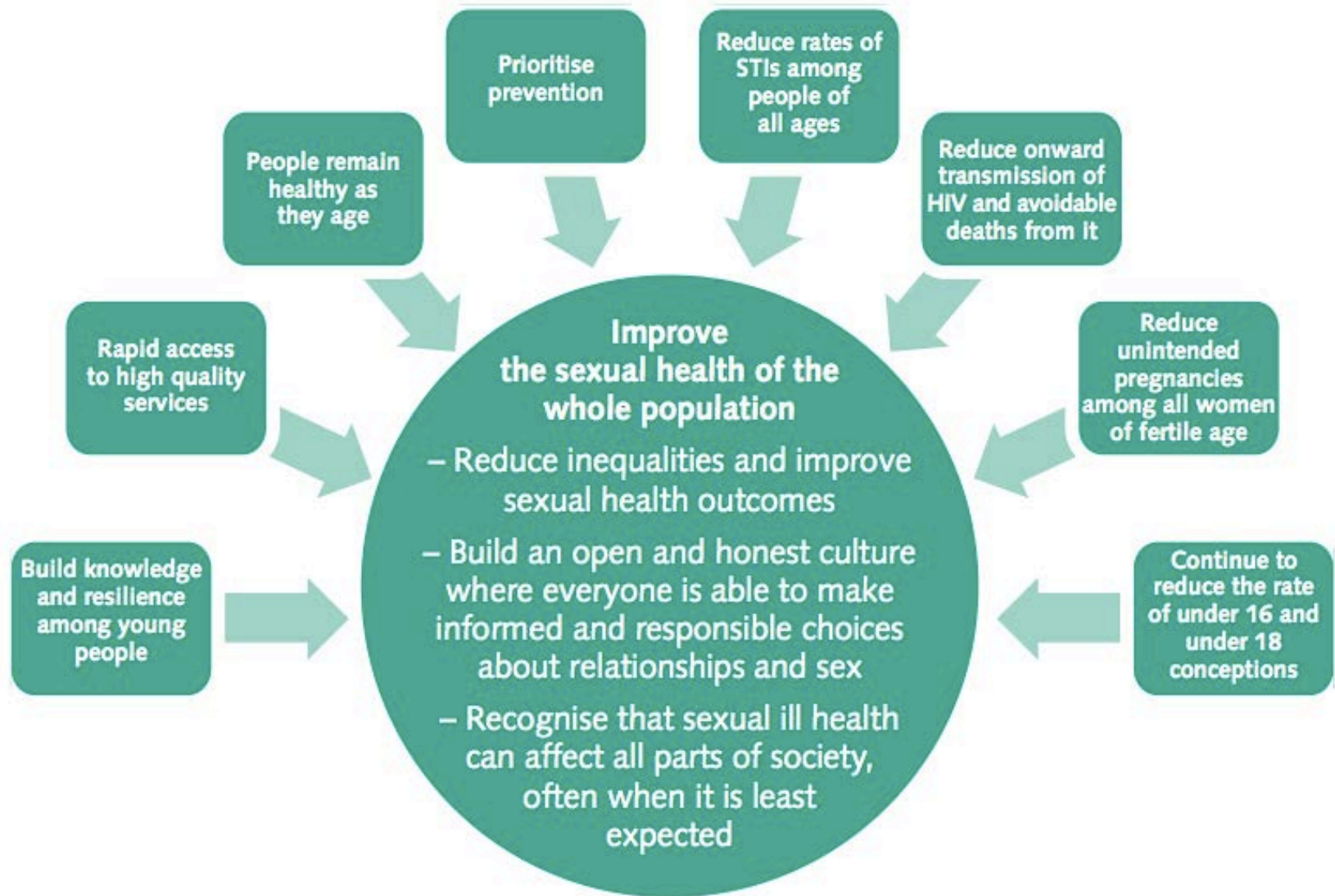
- Poor sexual health particularly in communities experiencing health inequality
- Reduction in people's ability to contribute to society as a whole
- Reduced life chances as a result of teenage pregnancy
- Increased transmission of HIV
- Negative impact on economic stability

Other public services

- Increased demand for health and social care services to address increases in
- unplanned pregnancy
 - complications arising from untreated STIs and HIV
 - increased transmission of STIs
 - Reduced independence and life chances

Top line messages from the paper for the PH Committee

- Public health value & positive return on investment
- Statutory responsibility
- Clear guidance about what works
- Links to other local authority agendas
- HWB commitment to reducing rates of STIs and unplanned pregnancy
- Some complexity (pathway & provision)
- Co-dependence (other commissioners/contracts)
- Existing cost pressures
- Consequential impact of a budget reduction on residents and public services costs, including NHS partners



Working together to improve sexual health

**Web links that you may wish to
review at a later date...**

Find out where you can go to access confidential contraception that's right for you

Watch the video from the Family Planning Association (FPA) on the link below

<http://www.nhs.uk/conditions/contraception-guide/pages/where-can-i-get-contraception.aspx>

Sexual Health Nottingham City and Nottinghamshire
A local sexual health web site

<http://www.nottinghamshiresexualhealth.co.uk>

A local video about attending the GU Medicine Clinic at Kings Mill Hospital...a Video Story

<http://www.youtube.com/watch?v=RDQRPGnrMLQ>

Living with HIV

21ST CENTURY HIV
PERSONAL ACCOUNTS OF LIVING
WITH HIV IN MODERN BRITAIN

[HTTP://WWW.THT.ORG.UK/GET-
INVOLVED/CAMPAIGN/21ST-CENTURY-HIV](http://www.tht.org.uk/get-involved/campaign/21st-century-hiv)