

Youth, Families and Culture Division

Introduction to Services

Derek Higton
Service Director



**Nottinghamshire
County Council**

Divisional Overview

- We are direct delivery focused, with 7 constituent Services:
 - **Early Years and Early Intervention Service (£17m)**
 - **Targeted Support and Youth Justice Service (£10m)**
 - **Young People's Service (£6.5m)**
 - Culture and **Enrichment** Service (£8m)
 - **Planning, Performance and Quality Assurance (£3m)**
 - Libraries, Archives and Information Service (£9m)
 - Country Parks and Green Estate Service (£4.5m)

Early Years and Early Intervention Service: Overview

- **58 Children's Centres**
 - 0-12 yrs offer; universal and targeted services
 - Nottinghamshire Children and Families Partnership (County Health Partnerships, North Notts College, Family Action)
 - Ofsted children's centres inspections commenced 2010;
 - 24 inspections to date in Notts; 80% found to be 'Good' or 'Outstanding'
- **Early intervention structures and processes**
 - Pathway to Provision
 - Joint Access Teams
 - Common Assessment Framework
- **Early Years Provision**
 - Daycare/nursery sector support

Young People's Service: Overview

- **The Service's main focus is:**
 - The provision of high quality, safe and enjoyable activities for children and young people outside of the school day
 - Supporting children and young people to voice their opinions and to shape the services provided for them
- **The Service operates from over 100 points of delivery:**
 - 29 local authority youth centres
 - 10 mobile youth vehicles
 - Staffing and support for over 10 voluntary sector youth clubs
 - 4Uth summer festivals and programmes of holiday activities
 - Play Days, street and park play events in each district.
 - Youth centres used during the day by other services to work directly with young people
- **The Service coordinates the publicising of open access activities through its formal partnerships with both the Youth and Play voluntary sectors**

Young People's Service: Countywide activities

- Children and Young People's Participation Team
- Looked After Children Youth Work Team
- Play for Disabled Children Team
- Disability Support Team
- Skills for Employment Team (funded by Education Funding Agency)
- Duke of Edinburgh Award Scheme
- Nottinghamshire Learning Centre Support Team
- C Card Team
- Assessment of Youth and Play grant aid.

Young People's Service: Current Performance

- Over 26,000 Individual children and young people reached
- Over 260,000 attendances
- 8,000 young people participated in the C Card Scheme
- 2000+ Duke of Edinburgh's Award participants
- A Successful 2012 Ofsted Survey visit of open access provision for disabled children and young people
- Successful capital programme

Targeted Support and Youth Justice Service: Overview

- **Services for vulnerable children and adolescents not requiring child protection:**
 - Young Offenders and related ASB
 - Education attendance
 - Homeless young people and missing children
 - Targeted Information, Advice and Guidance
 - Substance misuse
 - Young carers
 - Teenage parents

Targeted Support and Youth Justice Service: Overview

- Multi-Agency service partners
 - Police, Probation, Health
 - Remedi, Catch 22, Family Action
 - TAAS, Futures
 - Troubled Families Programme
- Delivery through community based facilities
- Mixed economy of commissioned and directly delivered services

Current Service Performance

- Youth Offending – “Purple” grading by the Youth Justice Board
 - – First Time Entrants
 - – Re-offending
 - – Custody
- Very positive Core Case Inspection result
 - July 2012

Culture and Enrichment Service: Overview

- Outdoor and Environmental Education
- Arts and Sports

Outdoor and Environmental Education

Key work strands

- Provide access to guidance (+ training), advice and approval procedures for off site/educational visits for schools and NCC groups
- Offer opportunities for residential and day visits to all schools and young people in Nottinghamshire
 - Hagg Farm, Snake Pass
 - St Michael's, Hathersage
 - Brackenhurst nr Southwell
 - Perlethorpe nr Ollerton

Outcomes 2012:

- Occupancy at Residential Centres 80%, Mill Adventure Base 51%, Day Centres 77%
- Levels of satisfaction – 97% across all bases

Arts and Sports for Children and Young People

- **County Youth Arts**
 - Old Library, Mansfield
- **Instrumental Music Teaching**
- **Notts Performing Arts**
 - 11th session
 - Performance Groups
- **Schools' Swimming**
 - Cost neutral
- **Lead organisation for the Nottinghamshire Music Education Hub**

Planning, Performance & QA Service

- **Capital Projects Team**

- plans the Department's capital programme activity (schools and non-schools)
- supports schools to convert to academy status
- manages the schools PFI projects at Bassetlaw and East Leake
- manages a number of other transitional improvement projects, e.g. departmental implementation of the Ways of Working Programme.

- **Planning and QA Team**

- supports the business of the department by providing policy, research and executive support to the day to day work of the Corporate Director and other senior officers
- project manages major department-wide projects and initiatives, e.g. Early Help
- coordinates business / commissioning plans and performance reporting across the department and the Children's Trust

- **Data & Performance Team**

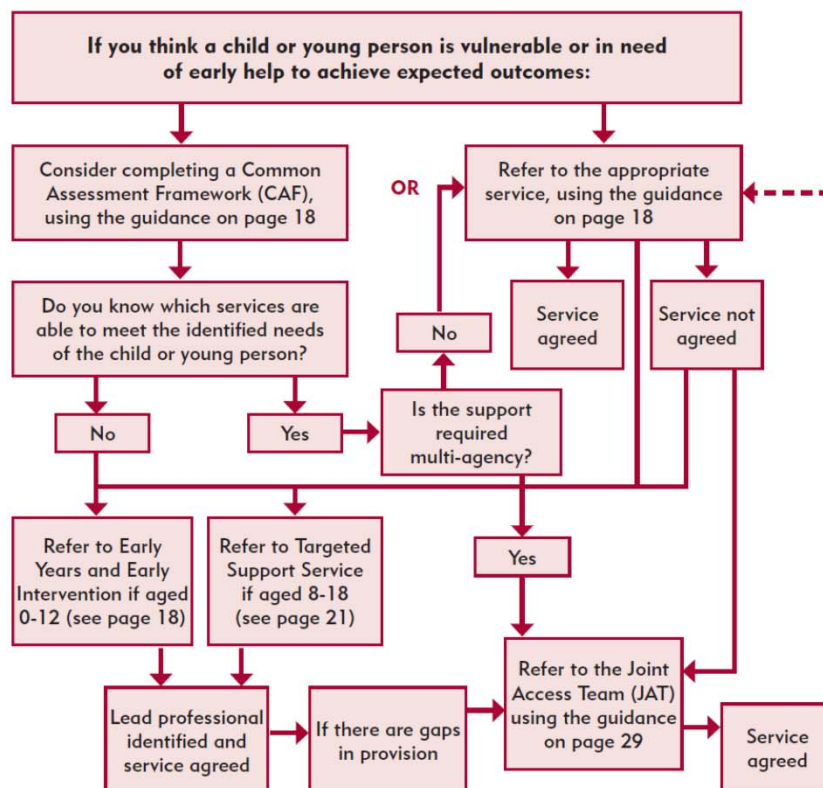
- analyses and manages data relating to children, young people and families
- manages statutory data collections and returns to government and collates a range of performance information to support front line services
- manages the Capita One data system that supports school admissions and early years provision
- provides advice across the Department on a range of data security and information governance issues



Outline of the Pathway to Provision

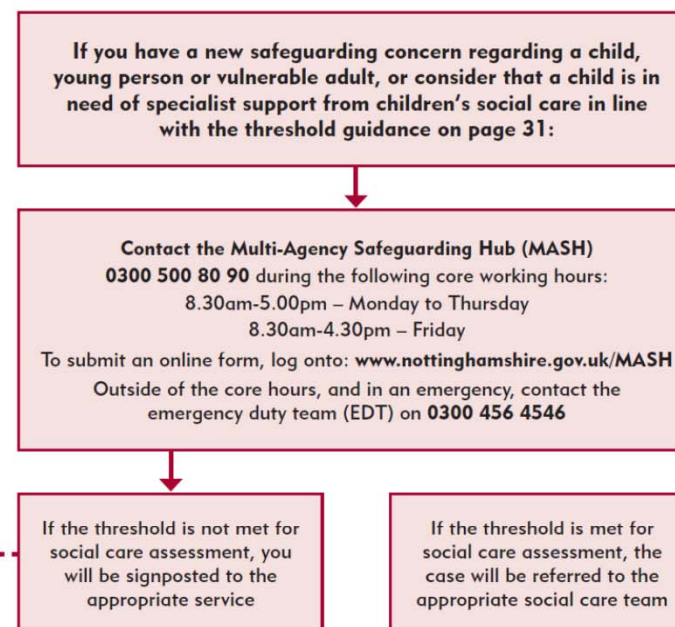
This poster is taken from the Pathway to Provision (version 3, December 2012), which is available to download from www.nottinghamshire.gov.uk/pathwaytoprovision. The pathway outlines the action a practitioner should take when working with a child, young person or family in need of early intervention, targeted or specialist support, and when there are safeguarding concerns about a child or young person.

Early Help Pathway

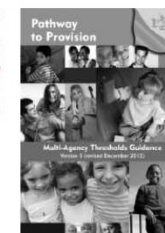


If at any point on the pathway child protection concerns arise, then these must be discussed with Children's Social Care without delay.

Safeguarding (Children's Social Care) Pathway



Service request forms and guidance can be found at www.nottinghamshire.gov.uk/pathwaytoprovision



**Nottinghamshire
County Council**